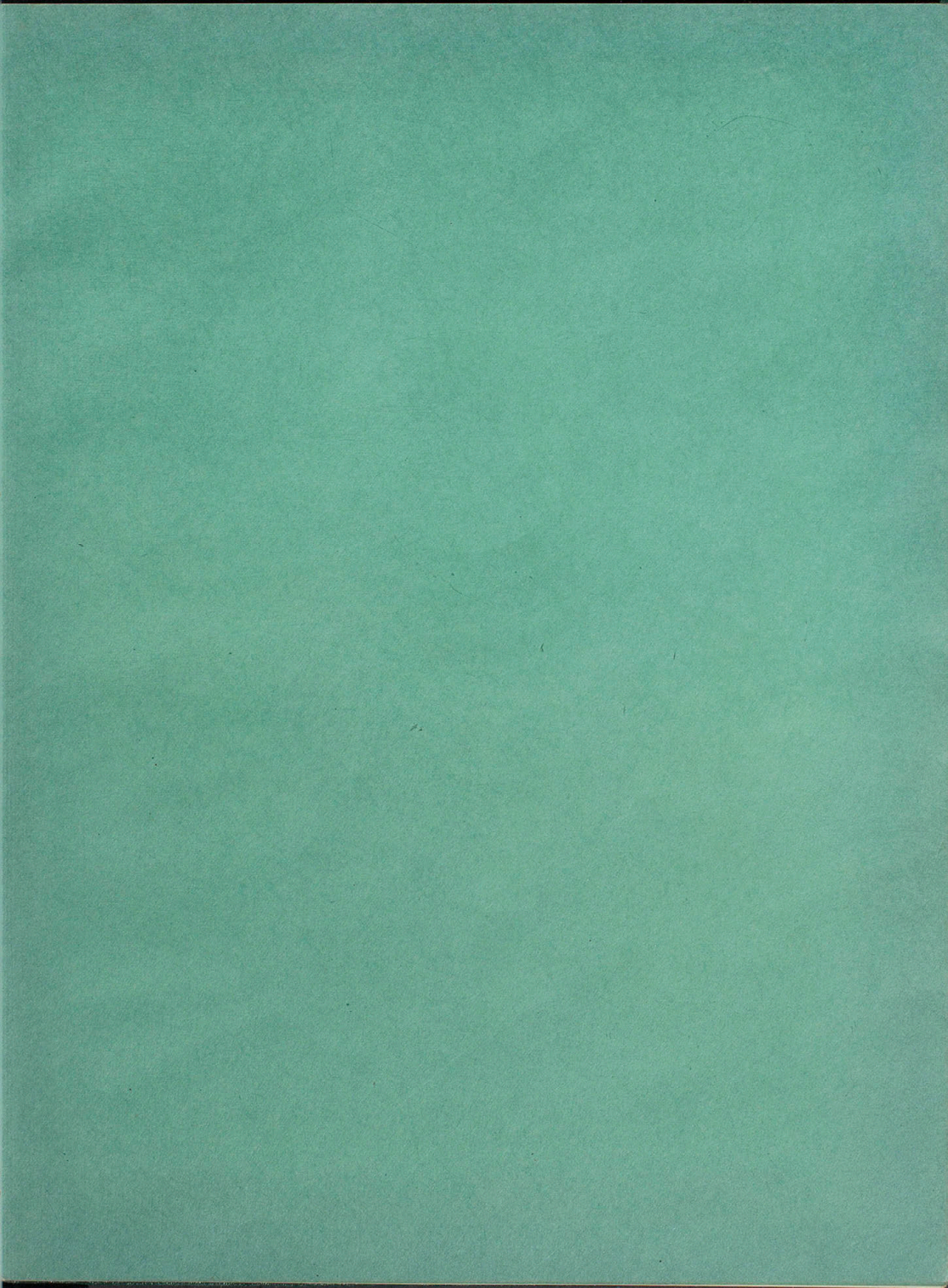




NORTHEAST MISSOURI STATE TEACHERS COLLEGE

NINETEEN THIRTY EIGHT





The



Echo



NORTHEAST MISSOURI
STATE TEACHERS COLLEGE



EDITOR · ART TOMPKINS

BUSINESS MANAGER ·

PARVIN JENKINS

NORTHEAST MISSOURI
STATE TEACHERS COLLEGE

1938

PRESENTED BY THE STUDENTS

OF NORTHEAST MISSOURI

STATE TEACHERS COLLEGE

KIRKSVILLE, MISSOURI

Introd

THE MIND knows no sweeter path to follow than that of

Reminiscence.

The seemingly long and tiresome, but necessary years that we spend in college will become a passing moment in our lives of years hence. Lest we forget, may we have a reminder at hand to freshen our memories of



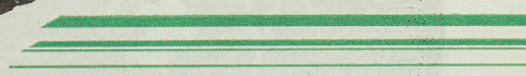
ction



the pleasures we enjoyed here, the friends whose companionship benefited us, and college life as we knew it.

In order that an accurate impression of our memories of these things may be preserved and pondered pleasantly over in years to come, may we share the 1938 Echo.

Let it renew your joys.



Dedicated



THIS may be his first year on the campus or it may be his last. If some picture, word or cartoon calls to his mind a golden moment, then our purpose shall have been achieved. To him we dedicate this book.

TO HIM . . .

TO HER...

Deed



SHE HAS brought
friendliness, beauty
and understanding to
our school. Her every
thought, word and deed
has made of K.S.T.C. a
more glorious institu-
tion. To her we dedi-
cate this book. . . .




Contents

BOOK I Autumn

BOOK II Winter

BOOK III Spring



Autumn



IN MEMORIAM



DR. JOHN R. KIRK

President Emeritus of
Northeast Missouri State
Teachers College . . .

BORN JANUARY 23, 1851

DIED NOVEMBER 7, 1937

IN MEMORIAM



DR. EUGENE FAIR

President of Northeast
Missouri State Teachers
College

BORN OCTOBER 19, 1877 *error*

DIED AUGUST 13, 1937

BOOK I

Contents

ADMINISTRATION

BOARD OF REGENTS
STUDENT COUNCIL
PRESIDENT'S MESSAGE
FACULTY

CLASSES

SENIORS
JUNIORS
SOPHOMORES
FRESHMEN

FOOTBALL

SQUAD
CAPTAINS
LETTERMEN

Administration



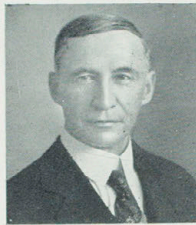
BOARD OF REGENTS

REGENT EX-OFFICIO

LLOYD W. KING
State Superintendent of Schools
 Jefferson City

OFFICERS OF THE BOARD

J. A. COOLEYPresident
 W. A. CABLEVice-President
 ROLAND A. ZEIGELSecretary
 H. G. WELLMANTreasurer



J. A. COOLEY



LLOYD W. KING



W. A. CABLE



ROLAND ZEIGEL



LIONEL DAVIS



ETHEL CONNER



J. C. HOUCK

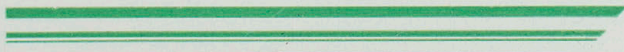
STANDING COMMITTEES

HOUCK, CONNER, ZEIGEL.....Executive
 CABLE, DAVIS, KING.....Teachers



STUDENT COUNCIL

Faculty Sponsor J. W. HEYD
 President NOAH RICHARDSON
 Vice-President TEX FOWLER
 Secretary MELBA WOOLF
 Treasurer EDWIN HARTFORD
 Councilman-at-large PHILLIP KELEY
 Councilwoman-at-large HELEN KENNETT
 Councilmember-at-large—
 LOUISE EDRLINGTON
 Senior Councilwoman MILDRED BRENNER
 Senior Councilman JOE BAILEY
 Junior Councilwoman ROSE BARNES
 Junior Councilman BILLY TURNER
 Sophomore Councilwoman—
 MARY ANN DUNHAM
 Sophomore Councilman—GEORGE LAUGHLIN
 Freshman Councilwoman—
 MARGUERITE RANSOM
 Freshman Councilman BILL O'BRIANT



THE PRESIDENT'S MESSAGE



The never ending procession of years brings us another yearbook. Insignificant perhaps in the chronicle of our nation's history, but vital to those of us concerned. It contains the records of our friends whom we have come to know and cherish, remembrances of activities and remnants of all those things which make up our school life. Some of those whose pictures are on these pages will leave this institution, perhaps to return no more. Others will come again and again until it is their time to face the conflict of life, armed with weapons which they themselves have fashioned in the workshops of their instructors. Thus the courageous battle for enlightenment will be waged on many fronts and carried into the fortified camps of the enemies of education. So, too, will humanity and that which is called civilization move forward in direct proportion to the effort put forth by groups of young people such as are represented here. It is a pleasure and delight to be associated with young people whose alertness and keen interest in all things gives one added confidence that democracy shall survive.

Walter H. Ryle

FACULTY



HENRY L. ENOCHS
Business Administrator
B. S.



LOUIS A. EUBANK
*Dean of the Faculty and head of the
Division of Education*
B. S., A. M., Ph.D.



NORVAL C. ALLEN
Instructor of Agriculture
B. S., A. M.



TOM ANGUS
*Head of the division of Extension Service,
Director of Bureau of Placements, and
Assistant Professor of Social Science*



EDWARD S. AVISON
Instructor of Language
B. S., M. A.



BERNICE B. BEGGS
*Assistant Professor of Education and
Supervisor of English*
B. S., A. M.



JOHN L. BIGGERSTAFF
*Professor of Music and Head of the
Division of Arts*
B. M., Certificate in Composition from
the Julliard School of Music



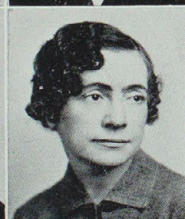
WILLIS J. BRAY
*Professor of Chemistry and Head of the
Division of Science*
A. B., B. S., A. M., Ph.D.



FREDA BRUNS
Assistant Professor of Business Education
B. S., A. M.



GLENN V. BURROUGHS
Professor of History
B. S., A. M., Ph.D.



SYLVIA BROWNE
Librarian
B. S., B. S. (Library Science)



CLARA H. CLEVENGER
Professor of Economics and Sociology
Ph.B., A. M., Ph.D.



LEWIS C. CLEVENGER
Professor of Biology and Poultry Science
B. S., A. M., Ph.D.



SHEROD J. COLLINS
Instructor of English and Speech
B. S., A. M.



BRACY V. CORNETT
*Associate Professor of Fine and Applied
Arts*
A. B., B. S.

- CLIFTON CORNWELL
Assistant Professor of Speech
B. S., A. M.
- JANE CROW
Assistant Principal of Junior High School
B. S., A. M.
- RUTH CURTIS
Instructor of Speech
B. S., M. S.
- EDITH DABNEY
Associate Professor of Fine and Applied Arts
B. S., A. M.
- MRS. G. N. DAILEY
Instructor of Music
- THELMA DODSON
Instructor of Physical Education
B. S.
- FRED W. FAUROT
Instructor of Physical Education
B. S., Graduate Work at Missouri U.
- VERA FAWCETT
Assistant Professor of English
B. S., A. M.
- FRANCES FULLER
Instructor of Physical Education
B. S., A. M.
- JOHN C. GOETZE
Instructor in Music
- C. R. GREEN
Professor of Public Health and Head of the Division of Health and Physical Education
A. B., A. M., D. O.
- THOBURN HAWK
Instructor in Geography
A. B., B. S.
- STANLEY HAYDEN
Director of Educational Service
B. S., A. M.
- JACOB W. HEYD
Professor of Modern Language and Head of the Division of Language and Literature
A. B., Ph.M.
- ETHEL HOOK
Associate Professor of Books and Director of Libraries
B. S., A. M.



FACULTY



V. DON HUDSON
Instructor of Political Science
B. S., A. M., Ph.D.

GEORGE H. JAMISON
*Professor of Mathematics and Head of the
Division of Mathematics*
B. S., A. M.

MRS. SAM KATZ
Instructor in Music
B. S.



MINNIE M. KENNEDY
Associate Professor of Household Science
B. S., A. M.

BEN W. LEIB
Professor of Industrial Arts
B. S., A. M.

LLORA MAGEE
Assistant Professor of Home Economics
Ph.B., M. A., Ph.D.



VIOLA MAGEE
Instructor of Latin
B. S., A. M.

C. W. MARTIN
Professor of Educational Administration
B. S., A. M., Ph.D.

CHARLES NOBLE
Superintendent of Buildings and Grounds
B. S.



MARGARET O'BRIANT
Secretary to Business Administrator
B. S.

SALLIE PATTINSON
*Instructor of Education and Rural
Supervisor*
B. S., A. M.

W. S. PEMBERTON
*Professor of Mathematics and Head of the
Division of Extension Service*
B. S., A. M.



N. W. RICKHOFF
*Head of Division of Personnel Service and
Associate Professor of Education*
B. S., A. M.

WRAY M. RIEGER
Professor of Chemistry
A. B., M. S., Ph.D.

RUTH L. ROBERTS
Instructor of Business Education
B. A., A. M.

FELIX ROTHSCHILD

*Director of Demonstration Schools and
Professor of Education*

A. B., A. M.

PAUL O. SELBY

*Professor of Business Education and Head
of the Division of Business Education*

LUCY SIMMONS

*Professor of History and Acting Head of
the Division of Social Science*

A. B., B. S., A. M.

AGNES SLEMONS

Instructor of Journalism and English

B. S., A. M.

GERALDINE SPAULDING

Instructor of French and English

A. B., A. M.

JAMES S. STOKES

Professor of Physics and Astronomy

B. S., B., Pd. M. S., A. M.

BARRETT STOUT

Associate Professor of Music

B. S., A. M., Ph.D., D. R.

FRANK H. TRIMBLE

Assistant Professor of Physics

A. B., A. M.

KARL E. WEBB

Instructor of Music

B. S., A. M.

GEORGE WELLS

Instructor of Physical Education

WILLIE WHITSON

*Instructor and Supervisor of Primary
Education*

B. S., A. M.

CLARA E. YADON

Cataloguer

B. S., B. S.

ALMA K. ZOLLER

Instructor of Health and College Nurse

B. S., R. N.

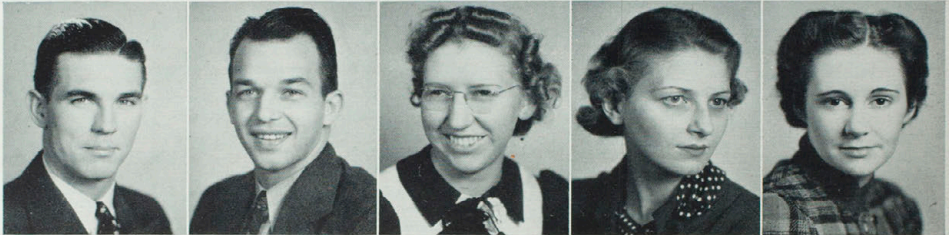


Seniors

CLASS OFFICERS

DAVID BRUNBERGPresident
MARY LOUISE ROBINSONVice-President
LOIS CARMICHAELSecretary
LOIS SHANERTreasurer
MILDRED BRENNERCouncilwoman
JOE BAILEYCouncilman





SENIOR CLASS

ADAIR, MILDRED *Jacksonville, Fla.*

ADAMS, ARMON *La Plata, Mo.*

AKERS, LOIS *New Hampton, Mo.*

ALBRIGHT, DONALD W. *Macon, Mo.*

ANDERSON, WM. WYATT—
Kansas City, Mo.

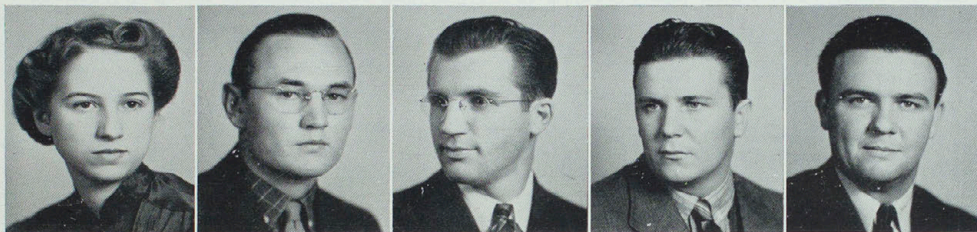
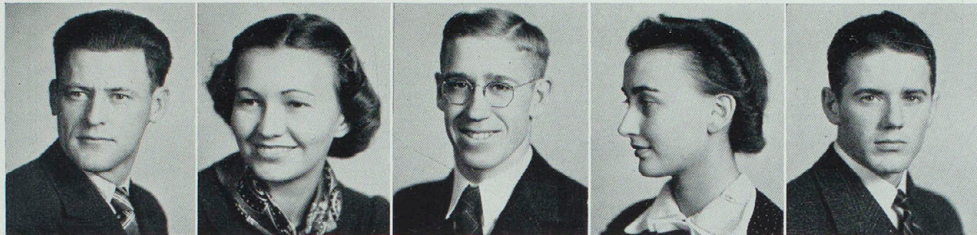
BAILEY, JOE *Shelbina, Mo.*

BAKER, LEE E. *Palmyra, Mo.*

BELL, NAOMI *Ethel, Mo.*

BLANKENHORN, JEAN *Kirksville, Mo.*

BLUE, EVALEE MARIE *Kirksville, Mo.*



SENIOR CLASS

BOTTS, LEE.....*Novelty, Mo.*

BRENNER, MILDRED L.*Laclede, Mo.*

BRUNBERG, DAVID*Waukegan, Ill.*

BURNETT, ESTHER*Laclede, Mo.*

BURNETT, MAURICE*Lockwood, Mo.*

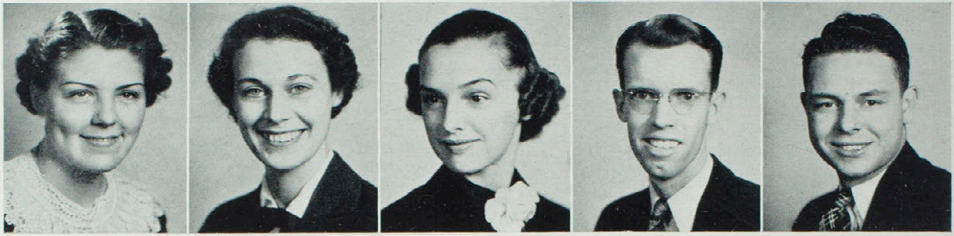
CARMICHAEL, LOIS*E. St. Louis, Ill.*

CASE, JOHN FRANCIS*Wright City, Mo.*

CORNWELL, H. CHARLES*Kirksville, Mo.*

CROOKSHANK, ROBERT ...*Brookfield, Mo.*

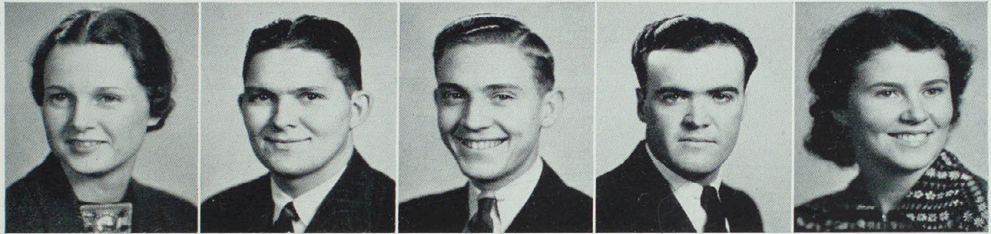
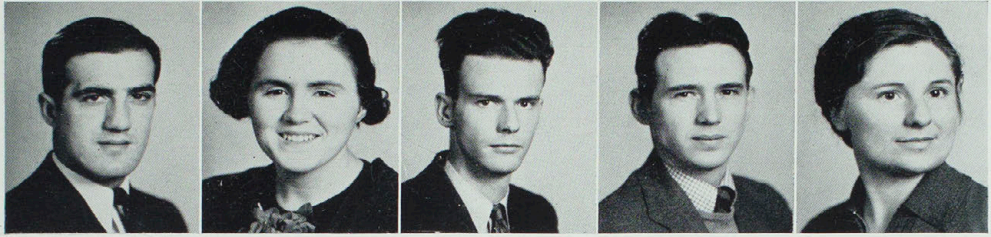
DAVIS, HILLIARD*West Plains, Mo.*



SENIOR CLASS

DEW, CHLORESSA*Kirksville, Mo.*
 EDRINGTON, LOUISE*Kirksville, Mo.*
 ENGLISH, RACHEL*Kirksville, Mo.*
 EPPERSON, HAROLD*Edina, Mo.*
 FINCHUM, FREDERIC*Bloomington, Ill.*

FLOWERS, FORREST E.*Atlanta, Mo.*
 FREEMAN, KENNETH H.*Armstrong, Mo.*
 GILLESPIE, MILDRED E.*Kirksville, Mo.*
 GLADDEN, J. MACK*Turley, Mo.*
 GRIGGS, MARY ELLEN*Kirksville, Mo.*



SENIOR CLASS

GRILLI, MARIO J. *Chicago, Ill.*
 HAMILTON, MARJORIE *Kirksville, Mo.*
 HART, WILFRED *Jonesburg, Mo.*
 HARTFORD, EDWIN *Worthington, Mo.*
 HOLCROFT, WANDA *Yarrow, Mo.*

HOUCK, VIRGINIA *Shelbina, Mo.*
 JEFFRIES, LEO *Kirksville, Mo.*
 JACOBS, KENNETH *Kirksville, Mo.*
 JENKINS, PARVIN *Wyaconda, Mo.*
 JOHNSON, BETHENA *La Plata, Mo.*



SENIOR CLASS

JOHNSTON, R. L. *Kirksville, Mo.*

JOHNSON, GEORGE W. *Kirksville, Mo.*

JOHNSTON, JULIA ANN *Kirksville, Mo.*

JONES, MARGARET RUTH—
New Cambria, Mo.

KELLER, ELEANOR *Kirksville, Mo.*

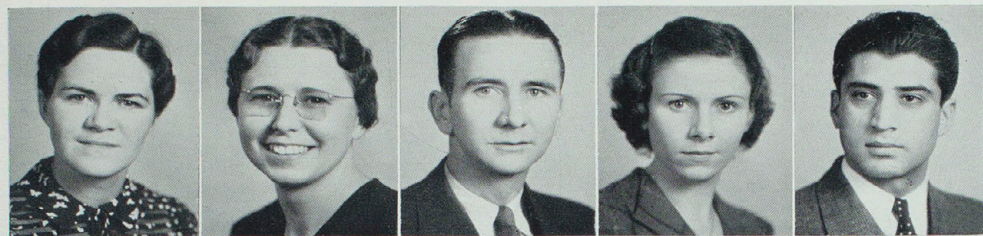
KENNETT, HELEN *Granger, Mo.*

KIZER, MARION *Palmyra, Mo.*

KUHNS, IRENE *Des Moines, Ia.*

LOUGHEAD, CRYSTAL *Atlanta, Mo.*

LOVE, PENELOPE *Milan, Mo.*



SENIOR CLASS

MILLS, LENA *Livonia, Mo.*

MOLLOY, THELMA *Purdin, Mo.*

MOTLEY, THOMAS *Bowling Green, Mo.*

NORTHCRAFT, GERTRUDE... *Kirksville, Mo.*

PHIALAS, PETE *Famagusta, Cyprus*

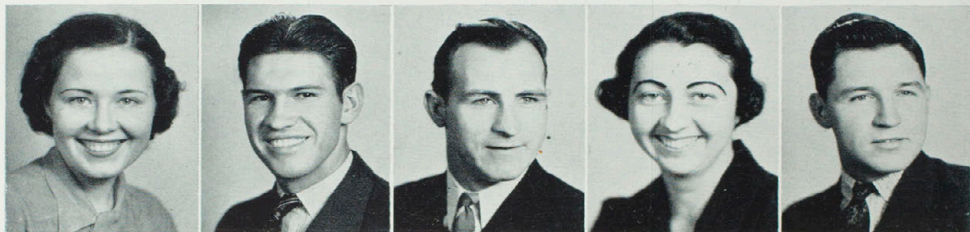
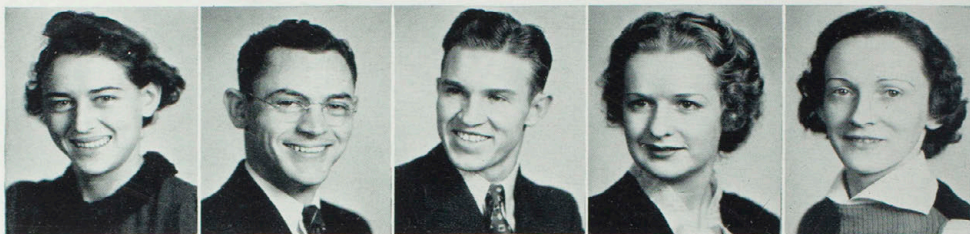
PHILLIPS, WILLIAM *Maywood, Mo.*

POWELL, MARY *Perry, Mo.*

RAY, HAZELDENE *Shelbina, Mo.*

REEVES, BILLIE *Kirksville, Mo.*

RICHARDSON, NOAH ... *Worthington, Mo.*



SENIOR CLASS

ROBINSON, MARY LOUISE.....*Hannibal, Mo.*

SAILOR, HENRY*Montgomery City, Mo.*

SCHWADA, PAUL*Clarence, Mo.*

SEAMAN, CARABEL*Kirksville, Mo.*

SHAHAN, HELEN*Kirksville, Mo.*

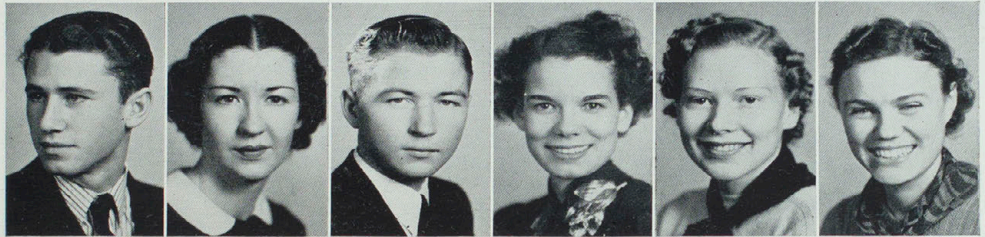
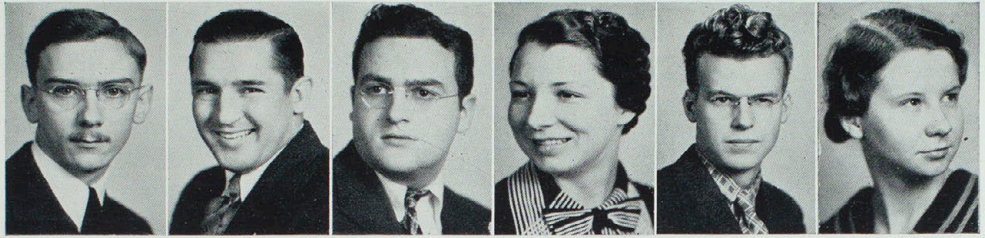
SHANER, LOIS*Queen City, Mo.*

SHANIGHT, HARRY*La Plata, Mo.*

SHEEHY, TOM*E. St. Louis, Ill.*

SHOOP, LUCILLE*Jefferson City, Mo.*

SHOUSH, BOB*Macon, Mo.*



SENIOR CLASS

SIMPSON, ROY *Hickory, Pa.*

SIRAKAS, JOHN *E. St. Louis, Ill.*

SEIBOLD, RALPH *Newport, R. I.*

SMITH, MARJORIE *Unionville, Mo.*

TERRY, KYLE *Kirksville, Mo.*

THORPE, MARJORIE *Milan, Mo.*

TURNER, JAMES ALLEN *Kirksville, Mo.*

VANDIVER, CHARLOTTE *Atlanta, Mo.*

VANSICKEL, RALPH *Kirksville, Mo.*

WALKER, HELEN *Kirksville, Mo.*

WAYLAND, VIRGINIA *Moberly, Mo.*

WOOLF, MELBA *Linneus, Mo.*

Juniors



CLASS OFFICERS

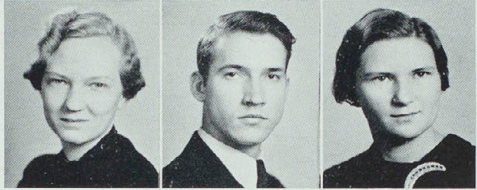
ALEXANDER YASKIW	President
JEANNE MCGLASHON	Vice-President
MARGARET RUTH JONES	Secretary
LAURA LOU COURTNEY	Treasurer
ROSE BARNES	Councilwoman
BILLY TURNER	Councilman

1938 JUNIORS

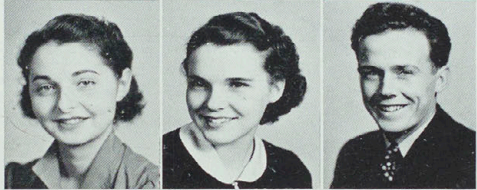
ALBRIGHT, GAIL*La Plata, Mo.*
 ATOR, NORINE*La Plata, Mo.*
 BARNES, ROSE*Kirksville, Mo.*



BEGOLE, ANITA*Centralia, Mo.*
 BERRY, RICHARD D.*Shelbina, Mo.*
 BLACK, KATHLEEN*Mendota, Mo.*



BOLLING, VIRGINIA*Browning, Mo.*
 BRAY, VIRGINIA*Kirksville, Mo.*
 BROWN, GERALD*Stahl, Mo.*



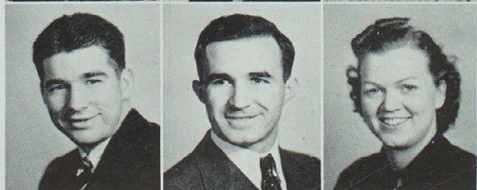
BURDETTE, CHARLOTTE*Kirksville, Mo.*
 BURNS, VIRGINIA*Brookfield, Mo.*
 BUSICK, JAMES L.*Green City, Mo.*



BYBEE, VERA FRANCES*Kirksville, Mo.*
 CABLE, LAVERNE*Winigan, Mo.*
 CALDWELL, HELEN*Milan, Mo.*



CARR, LEWIS*La Grange, Mo.*
 CASEY, CHARLES L.*Stahl, Mo.*
 CHIPMAN, LUCILLE*Nelsville, Mo.*



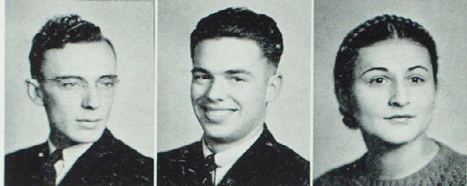
1938 JUNIORS



CISCO, ELEANOR*Trenton, Mo.*

CLARK, MILLARD*Madison, Mo.*

COCHRAN, KENNETH*Milan, Mo.*



COLE, DUANE*Kirksville, Mo.*

CREAMER, KENNETH*Kirksville, Mo.*

CRIGLER, MARTHA*Glasgow, Mo.*



DANIELS, GENEVA E.*Kirksville, Mo.*

DANNER, LODEMA*Ethel, Mo.*

DEVERMAN, HELEN*Ladonia, Mo.*



DIEHL, JOHN*Kirksville, Mo.*

DIEKROEGER, MILDRED L.—
Wright City, Mo.

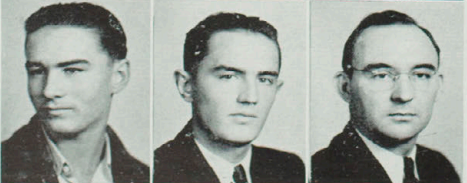
DRAPER, DALLAS*Alexandria, Mo.*



EGER, ESTHER*Maywood, Mo.*

EPPENSTEIN, HERSCHEL*Unionville, Mo.*

ERICKSON, EUGENE*Waukegan, Ill.*



ERWIN, RICHARD A.....*Willmathsville, Mo.*

ERWIN, CLARENCE C.—
Willmathsville, Mo.

FISHER, HAROLD*Huntsville, Mo.*

1938 JUNIORS

FOUNTAIN, HENRY*Kirksville, Mo.*
 FOX, CHARLES E.*Oakwood, Mo.*
 FRIESZ, WILLIAM L.*E. St. Louis, Ill.*

GARTH, JOHN P.*Kirksville, Mo.*
 GARBY, RUBIJOHN*Lentner, Mo.*
 GREEN, EMIL*Kirksville, Mo.*

GREGORY, JEAN*Kirksville, Mo.*
 HAGANS, DORIS*Kirksville, Mo.*
 HALEY, LILLY*Macon, Mo.*

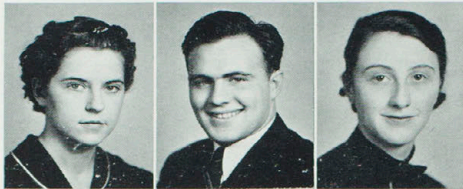
HALL, HAZEL LOUISE*Lancaster, Mo.*
 HARDIN, MARJORIE*Marceline, Mo.*
 HARDY, EDITH LANIER*Kirksville, Mo.*

HARRIS, DOROTHY*Hannibal, Mo.*
 HEATHER, GEORGE*Macon, Mo.*
 HEDRICK, FRANCIS*Brookfield, Mo.*

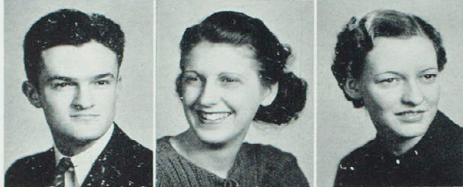
HICKMAN, FANNIE LEE*Unionville, Mo.*
 HINKSON, ERMA*Knox City, Mo.*
 HULL, ROBERT*Kirksville, Mo.*



1938 JUNIORS



HULETT, FLORENCE*Bynumville, Mo.*
 HUSTON, HARRY*E. St. Louis, Ill.*
 JAMISON, MARY FRANCES.....*Kirksville, Mo.*



JONES, RICHARD*Vandalia, Mo.*
 JONES, RUTH MARGARET.....*Kirksville, Mo.*
 KASISKE, BESSIE M.*Arbela, Mo.*



KELLEY, PHILLIP*Unionville, Mo.*
 LAMBERT, ANNA LEE*Kirksville, Mo.*
 LAWSON, BASIL*Queen City, Mo.*



LESLIE, PAULINE*Williamstown, Mo.*
 LEWIS, ROY*Fulton, Mo.*
 LYNCH, EDNA*Kirksville, Mo.*



McCLELLAND, VIOLET*Kirksville, Mo.*
 MCGLASHON, JEANNE*Kirkwood, Mo.*
 MCLEOD, HARRY*Kirksville, Mo.*



MCNEAL, EARL*Marceline, Mo.*
 MILLS, JACK*Kirksville, Mo.*
 MINOR, LEON*Newark, Mo.*

1938 JUNIORS

MONROE, MARY BESS*Memphis, Mo.*

MOODY, HILDRETH*Palmyra, Mo.*

MORSE, NORMAN*Revere, Mo.*

NORTHCRAFT, VIVIAN*Kirksville, Mo.*

NOBLE, ALICE*Brookfield, Mo.*

NORRIS, EMILY*Drakesville, Ia.*

MYERS, VIRGINIA*Kirksville, Mo.*

PARCELL, JAMES*Edina, Mo.*

PARIS, FRANCES*Chillicothe, Mo.*

PHELPS, ROBERTA*E. St. Louis, Ill.*

PHILLIPS, ELIZABETH*Green City, Mo.*

PRICE, PORTER*Humphreys, Mo.*

PRINDLE, MARY ALICE*Kirksville, Mo.*

ROBERTS, HENRY*Kirksville, Mo.*

ROLLINS, JOAN*Kirksville, Mo.*

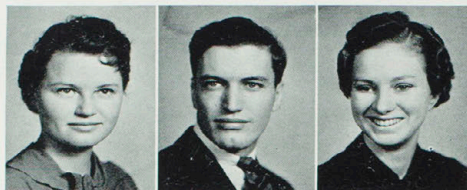
RUDASILL, DORIS*Kirksville, Mo.*

SCHWEHN, CARL*Hannibal, Mo.*

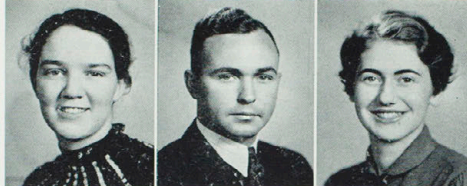
SCHWENGELS, FORREST*Kirksville, Mo.*



1938 JUNIORS



SCHWADA, MARY*Clarence, Mo.*
 SEITZ, KERLIN*Milan, Mo.*
 SHOOP, MARYLAND*Green City, Mo.*



SHOUSH, MARY MARGARET*Macon, Mo.*
 SKINNER, OTIS*Atlanta, Mo.*
 SMITH, MARY MARGARET*Edina, Mo.*



SNYDER, DON*Kirksville, Mo.*
 SPATH, MARTHA*Kirksville, Mo.*
 ST. CLAIR, HENRY*Ashton, Mo.*



SUBLETTE, HOWARD*Palmyra, Mo.*
 SUMMERS, LAURA HENSLEY—
 Montgomery City, Mo.
 SYKES, KENNETH*Kirksville, Mo.*



THAYER, FRANCIS PAUL...*La Grange, Mo.*
 THIELE, CARL*Bucklin, Mo.*
 THOROUGHMAN, GEORGE ...*Newark, Mo.*



TOMPKINS, ART*Kirksville, Mo.*
 TOWNE, RUTH*Kirksville, Mo.*
 TRIPLETT, RUTH*Harris, Mo.*

1938 JUNIORS

TURNER, BILLY*Kirksville, Mo.*
 WADSWORTH, FRANCIS.....*Monroe City, Mo.*
 WELLS, MARY*Powersville, Mo.*



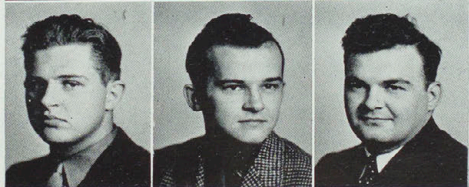
WELLS, NANCY*Powersville, Mo.*
 WELSZ, FLORENCE*Palmyra, Mo.*
 WILLIAMS, DOROTHY*Brookfield, Mo.*



WILLIAMS, KENNETH*Madison, Ill.*
 WILLIS, ROBERT*Kirksville, Mo.*
 WORTHINGTON, E.*Kirksville, Mo.*



WINN, JOHN HENRY*Kirksville, Mo.*
 WORKMAN, BURKE*Maplewood, Mo.*
 YASKIW, ALEXANDER*Passiac, N. J.*



Sophomores



CLASS OFFICERS

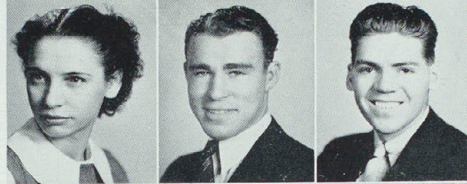
BILLY BONDURANT	President
BETTY CAROTHERS	Vice-President
EDNA ROUNER	Secretary
BETTY MANNING	Treasurer
MARY ANN DUNHAM	Councilwoman
GEORGE LAUGHLIN	Councilman

1938 SOPHOMORES

ALLEN, WALKER W.*Downing, Mo.*
 ANDERSON, MILLICENT*Kirksville, Mo.*
 AMES, RICHARD C.*Waukegan, Ill.*



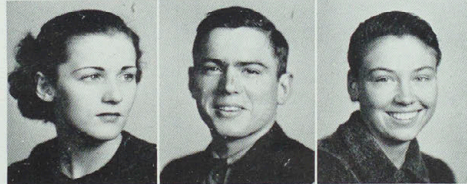
BELT, AVERAL*Hannibal, Mo.*
 BITTIKER, VIRGIL*Brashear, Mo.*
 BOHON, NORTON*Kirksville, Mo.*



BONDURANT, BILL*Kirksville, Mo.*
 BONDURANT, DALE*Kirksville, Mo.*
 BORTON, MARION*Kahoka, Mo.*



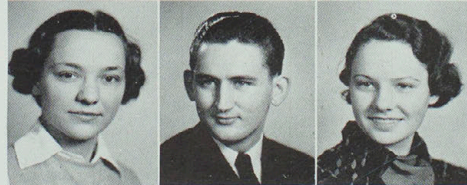
BOYLAND, RUTH*Kirksville, Mo.*
 BRANSTETTER, ROBERT DEANE—
 Vandalia, Mo.
 BREES, IRIS*Edina, Mo.*



BROCKMAN, JAMES*Kirksville, Mo.*
 BURCH, ROLLAND*Kirksville, Mo.*
 BURDMAN, LOUIE*Kirksville, Mo.*



CAROTHERS, BETTY*Kirksville, Mo.*
 CASTER, RICHARD*Ravona, Mo.*
 CLAPP, CLARABEL*La Belle, Mo.*



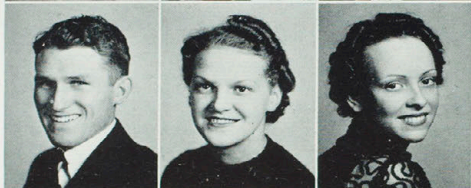
1938 SOPHOMORES



COLLINS, LAFAYETTE *Clarence, Mo.*
 COX, CLEO BELLE *Excello, Mo.*
 CRAWFORD, FRANK *Kirksville, Mo.*



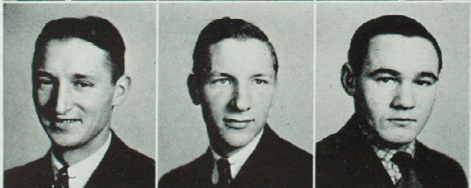
DAILEY, JANE ANN *Kirksville, Mo.*
 DAWKINS, RUTH *Kirksville, Mo.*
 DEVORE, GERALD *Plano, Ia.*



DOWELL, LA VERN *Brookfield, Mo.*
 DUNCAN, JEAN *Brookfield, Mo.*
 DUNHAM, MARY ANN *Callao, Mo.*



EARLY, MARTHA *Baring, Mo.*
 ELLEDGE, SHIRLEY *Centerville, Ia.*
 ELSON, RICHARD *Unionville, Mo.*



ESTES, CARL *Kirksville, Mo.*
 ESTES, GLEN *Kirksville, Mo.*
 EVANS, WILLARD *La Plata, Mo.*



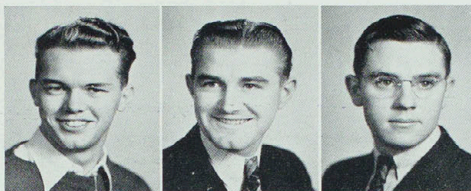
FARNSWORTH, RALPH *Kirksville, Mo.*
 FARRINGTON, ELNORA LEE. *Kirksville, Mo.*
 FOX, RICHARD *Stahl, Mo.*

1938 SOPHOMORES

FREEMAN, DAVID*Kirksville, Mo.*

FRIEDMEYER, GEORGE*Wentzville, Mo.*

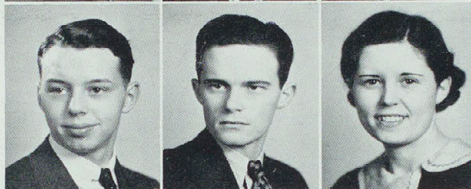
GARRISON, LLOYD L.*Shelbyville, Mo.*



GRAHAM, EUGENE*Waukegan, Ill.*

GREEN, CHARLES*Kirksville, Mo.*

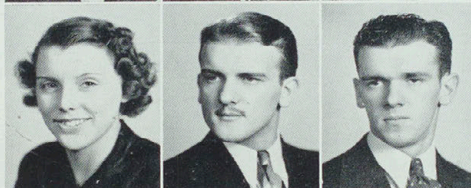
GREEN, HELEN*Kirksville, Mo.*



GREEN, MAXINE*Kirksville, Mo.*

GREENE, FRANKLIN*Kirksville, Mo.*

GREENE, MYRON*Kirksville, Mo.*



GREENE, PAUL*Kirksville, Mo.*

GREENLEY, HORTENSE*Novelty, Mo.*

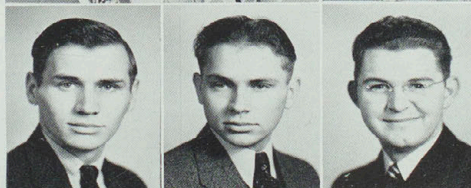
GUDKA, WENDELL*Memphis, Mo.*



GUY, DORSEY*Gorin, Mo.*

GUY, HOMER*Gorin, Mo.*

HANDLEY, LOUIS*Kirksville, Mo.*



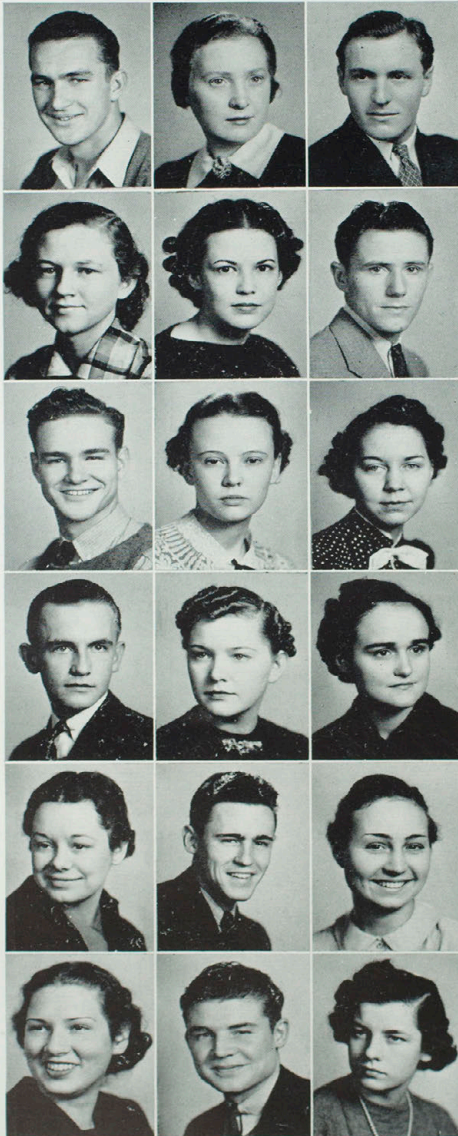
HARTLEY, BEULAH*Kirksville, Mo.*

HEABERLIN, EVA MAE*Kirksville, Mo.*

HUFFMAN, MARY*Atlanta, Mo.*



1938 SOPHOMORES



HUTCHERSON, OLIN*Maywood, Mo.*
 JENKINS, LOIS MAE*Wyaconda, Mo.*
 JENKINS, RICHARD*Wyaconda, Mo.*

JOHNSON, HELEN*Kirksville, Mo.*
 KNIGHT, ERMA*Kirksville, Mo.*
 KNOP, RAYMOND*Olathe, Kan.*

KOEPPE, KENNETH*New Cambria, Mo.*
 LATHROP, MARGARITE*Unionville, Mo.*
 LESLIE, MARY*Memphis, Mo.*

MALONE, GENE*Brookfield, Mo.*
 MALLINCKRODT, GERTRUDE.....*Augusta, Mo.*
 MANNING, BETTY*Kirksville, Mo.*

MCDONALD, ELSIE*Unionville, Mo.*
 MARTIN, JOHN*Unionville, Mo.*
 MCCLELLAND, BETTY*Kirksville, Mo.*

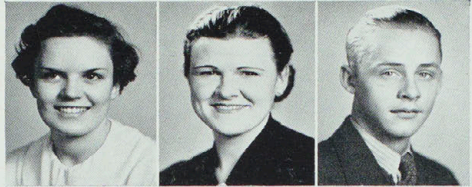
MANES, MYRA JUNE*Quincy, Ill.*
 MCNEELY, EMIL*Kirksville, Mo.*
 MEYER, CORINNE*St. Charles, Mo.*

1938 SOPHOMORES

MILLS, EMMA LOU*Kirksville, Mo.*

MOORE, MAURINE*Chillicothe, Mo.*

MOUKER, BRYAN*Queen City, Mo.*



MULDROW, LUCILE*Perry, Mo.*

MULLANIX, LA VERNE*Memphis, Mo.*

MURDOCK, ALICE*Milan, Mo.*



MYERS, HELEN*Kirksville, Mo.*

NEWCOMER, HAZEL*Kirksville, Mo.*

OBERG, MARTHA*Trenton, Mo.*



PAGE, JOYCE*Kirksville, Mo.*

PAGE, MILDRED*Milan, Mo.*

PALMER, RALPH*Centralia, Mo.*



PARSONS, VIRGINIA*Green Castle, Mo.*

PAYNE, GEORGENE*Green City, Mo.*

POLSON, ROBERT*Cairo, Mo.*



PRATER, ARNOLD*Versailles, Mo.*

PRICKETT, LUCILLE*Wyconda, Mo.*

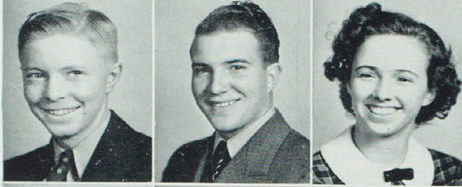
PUNDMAN, ELMER*St. Charles, Mo.*



1938 SOPHOMORES



RADOSEVICH, ELMA*Kirksville, Mo.*
 RECE, LUCY MAE*Kansas City, Mo.*
 REESE, WILBUR*St. Louis, Mo.*



ROBERTS, RAY*Kirksville, Mo.*
 ROBINSON, VIRGIL*Winchester, Va.*
 ROUSER, EDNA*Knox City, Mo.*



SCHNEIDER, LOUISE*Novinger, Mo.*
 SCHWADA, MIRIAM*Clarence, Mo.*
 SEES, RALPH*Kirksville, Mo.*



SHAIN, RALPH*Kirksville, Mo.*
 SHEPARD, DOROTHY*Slater, Mo.*
 SHORES, ELVA*Leonard, Mo.*



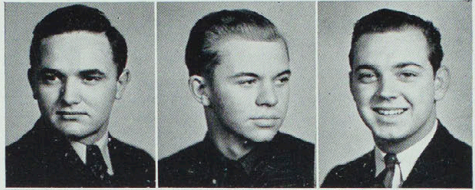
SKINNER, WILLIAM*Macon, Mo.*
 SLOOP, HILDA*Queen City, Mo.*
 SLOOP, HOWARD*Queen City, Mo.*



SMITH, WESLEY*Kirksville, Mo.*
 SNYDER, ALLEN*Iowa City, Ia.*
 SPINDLER, CHARLES*Kirksville, Mo.*

1938 SOPHOMORES

STERLING, DALE*Milan, Mo.*
 STILL, HERMAN*Vernon, Tex.*
 STUCKEY, JUNIOR*Unionville, Mo.*



TAYLOR, BARBARA*Kirksville, Mo.*
 THIELE, EDNA*Bucklin, Mo.*
 TATE, VIRGINIA*Elsberry, Mo.*



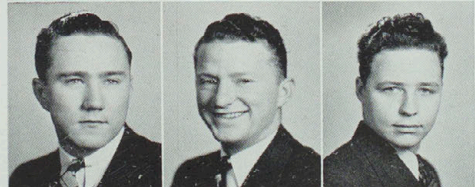
THOMAS, MARY ELIZABETH.....*Macon, Mo.*
 THOMPSON, BETTY SUE*Milan, Mo.*
 THUDIUM, FRIEDA*Brookfield, Mo.*



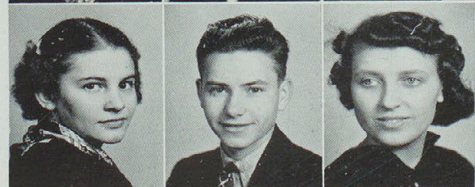
TUCKER, MILDRED*Kirksville, Mo.*
 TROUTMAN, ERNEST*Carroll, Mo.*
 WALLER, GRANVILLE*Kirksville, Mo.*



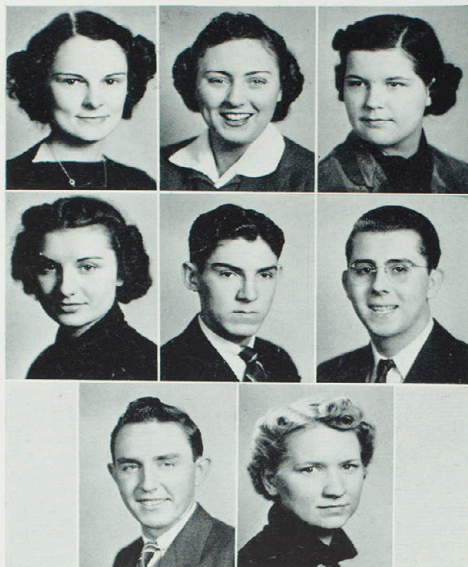
WEBBER, ADELBERT*Stoutsville, Mo.*
 WASHAM, WILLIAM*Salisbury, Mo.*
 WARREN, RAYMOND*Kirksville, Mo.*



WERNER, LOUISE*Edina, Mo.*
 WELLS, CHESTER*Kahoka, Mo.*
 WELCH, WILMA*Salisbury, Mo.*



1938 SOPHOMORES



WILLIAMS, RUTH*Kirksville, Mo.*

WILLIS, ALETA*Mason City, Ia.*

WIMBER, MARGARET*Kirksville, Mo.*

WISMAN, JOYCE*Centralia, Mo.*

WOODS, BOB*Shelbyville, Mo.*

WRIGHT, HARRY*Kirksville, Mo.*

YAEGER, BERNARD*Glasgow, Mo.*

ZURCHER, FRANCES*Marceline, Mo.*

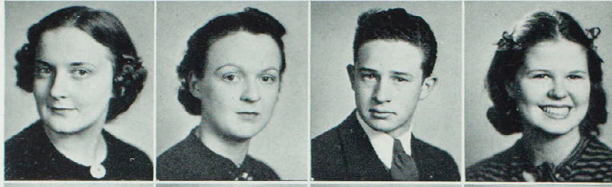
Freshmen

CLASS OFFICERS

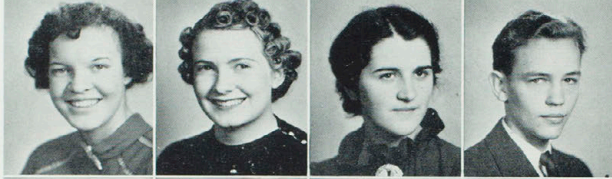
HAROLD SPARKSPresident
CLIFTON CORNWELLVice-President
NELL RUSSELLSecretary
EDWARD MCFARLANDTreasurer
MARGUERITE RANSOMCouncilwoman
BILL O'BRIANTCouncilman



1938 FRESHMEN



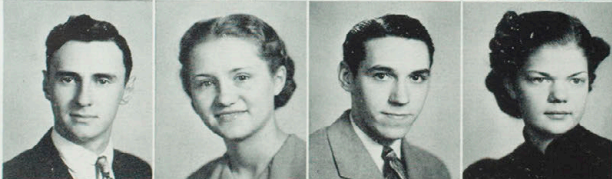
ADAMS, THELMA HELEN.....*Queen City, Mo.*
 ADAMS, VELMA LOUISE*Memphis, Mo.*
 ADAMS, WILLIAM HENRY*Arbela, Mo.*
 ANDERSON, ELLEN*Kirksville, Mo.*



ANTRY, EMMA LEE*Atlanta, Mo.*
 ATTERBURY, ELGELINA*Holliday, Mo.*
 AYRES, MARTHA FRANCES*Atlanta, Mo.*
 BAKER, BILLY*New Cambria, Mo.*



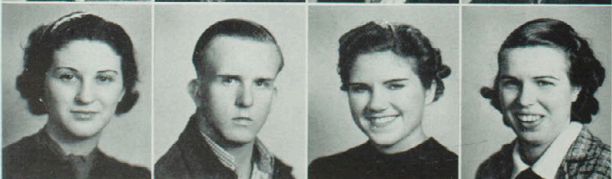
BAIOTTO, JOSEPHINE*Youngstown, Mo.*
 BALL, WM. THOMAS*New Boston, Mo.*
 BOHON, RUSSELL*Kirksville, Mo.*
 BARB, MARJORIE D.....*Downing, Mo.*



BASS, CLYDIE*Ulman, Mo.*
 BAUGHER, GERALDINE*Bucklin, Mo.*
 BEALMER, BILL*Kirksville, Mo.*
 BECKNER, BETTY CAROL.....*Kirksville, Mo.*



BENTON, THOMAS RAGAN.....*Olathe, Kans.*
 BIBEE, EARNEST A.....*Stahl, Mo.*
 BIGSBY, BILL*Kirksville, Mo.*
 BLACK, CLEO*Kirksville, Mo.*



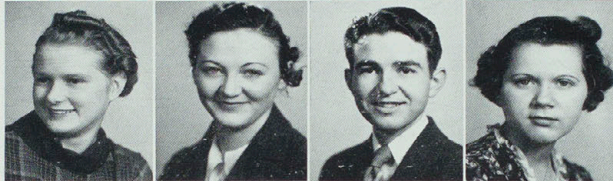
BLACK, DOROTHY ROSE.....*Rutledge, Mo.*
 BLANCHARD, J. LYLE.....*Glenwood, Mo.*
 BORRON, LOUISE*Milan, Mo.*
 BRANSTETTER, MARJORY.....*Curryville, Mo.*

1938 FRESHMEN

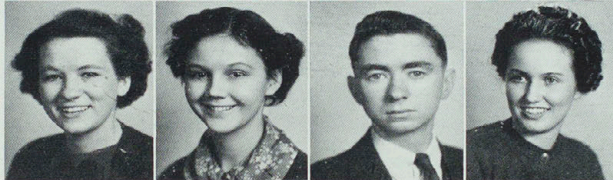
BREES, DOROTHY LEE.....*Edina, Mo.*
 BRENZER, RALPH ALVA.....*Kirksville, Mo.*
 BRIGGS, BEN JIE*Memphis, Mo.*
 BROCK, ELLIS*Jacksonville, Mo.*



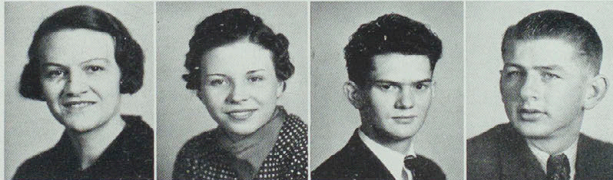
BRYAN, MARY LOU.....*Hallsville, Mo.*
 BURGHIER, DELORES*Moulton, Iowa*
 BURKHART, EDWIN*Kirksville, Mo.*
 BURNS, ELIZABETH*Brookfield, Mo.*



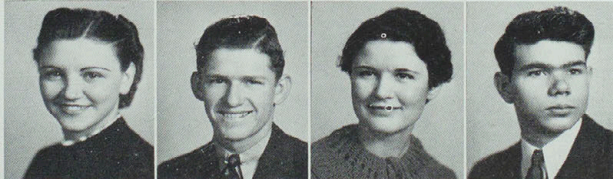
CARPENTER, BEULAH*Kirksville, Mo.*
 CHADWICK, NORMA LEE.....*Kirksville, Mo.*
 CHAMBERS, WILLARD*LaBelle, Mo.*
 CLARE, NINA CATHERINE.....*Silex, Mo.*



CLARK, HELEN*Kirksville, Mo.*
 CLARK, LUCILE*Kirksville, Mo.*
 CLARK, RICHARD KEITH.....*Centerville, Mo.*
 CLEETON, RUSSEL*Seymore, Iowa*



CLIFTON, LAVETA*Wyconda, Mo.*
 COCHRAN, VICTOR*Milan, Mo.*
 COOK, UMATILLA*Kirksville, Mo.*
 COOLEY, KENNETH*Kirksville, Mo.*



COREY, FLORA M.....*Bynumville, Mo.*
 CORNWELL, CLIFTON*Kirksville, Mo.*
 COX, MARY ELIZABETH.....*Foley, Mo.*
 COY, NEVA LEE.....*La Plata, Mo.*



1938 FRESHMEN



CRAGG, IRENE*Greentop, Mo.*

CRISMAN, ALICE ROSEMARY—
Brunswick, Mo.

CRIST, VELMA*Green City, Mo.*

CURRY, JOHN*Kirksville, Mo.*

DAVIS, MAYME LOUISE.....*Macon, Mo.*

DAVIS, ROBERT*Kirksville, Mo.*

DECK, MARGARET*Williamstown, Mo.*

DELANEY, DOROTHY ANN—
Hurdland, Mo.

DENNIS, ILA MAY.....*Clifton Hill, Mo.*

DEVERGER, BENNIE*Maywood, Mo.*

DIGGS, MARJORIE*Jonesburg, Mo.*

DIMMITT, MELVIN*Green Castle, Mo.*

DODD, GLADYS*Boomer, Mo.*

DRAPER, RUBY GENE.....*Brashear, Mo.*

DUNN, VELMA*Baring, Mo.*

EGER, MAURICE*Maywood, Mo.*

ELLIS, ROBERT W.....*Kirksville, Mo.*

ELLISON, MURIEL ANN.....*Canton, Mo.*

ELMORE, JOHN W.....*Liege, Mo.*

EMBREE, VIRGINIA*Marceline, Mo.*

EPPERSON, DOROTHY D.....*Hurdland, Mo.*

EPPERSON, JAMES M.....*Hurdland, Mo.*

EPPERSON, PAUL*Atlanta, Mo.*

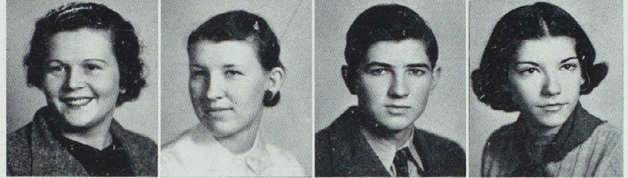
EPPERSON, MARY*Atlanta, Mo.*

1938 FRESHMEN

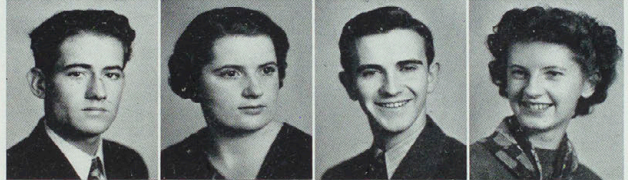
EVANS, MAYBELLE *Kirksville, Mo.*
 EVANS, MERLIN *Kirksville, Mo.*
 FIFE, VERA D. *Kirksville, Mo.*
 FISK, F. RETA *Bevier, Mo.*



FLEAK, RUTH E. *Novelty, Mo.*
 FLESHMAN, JULIA *Lucerne, Mo.*
 FREELAND, MAX *Browning, Mo.*
 GAHAN, NEDRA *Kirksville, Mo.*



GAITHER, SYDNEY *Bethany, Mo.*
 GARVIN, NEVA ELIZABETH—
 Brunswick, Mo.



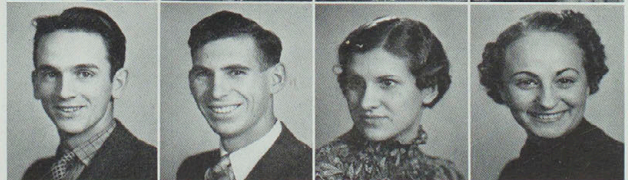
GENOLA, JOHN *Remick, Mo.*
 GIVENS, JANE *Kirksville, Mo.*



GLASS, HOUSTON *Kirksville, Mo.*
 GLEASON, BERTLE *Kirksville, Mo.*
 GLEASON, VINSON W. *Kirksville, Mo.*
 GORDON, HELEN *Rothville, Mo.*



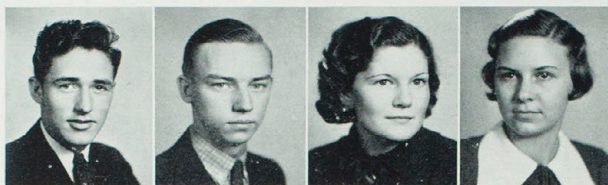
GORDON, JOYCE *Kirksville, Mo.*
 GRAMSCH, BOYD *Green City, Mo.*
 GREEN, LEE M. *Kirksville, Mo.*
 GREEN, MARJORIE *Kirksville, Mo.*



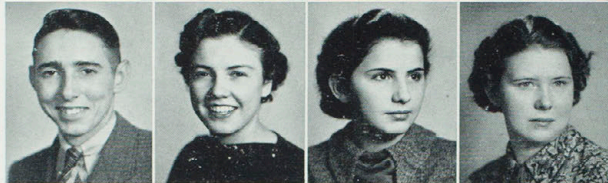
GREENSTREET, CLEO ... *Youngstown, Mo.*
 GRIFFITH, WILLIS *Leonard, Mo.*
 GRIFFITH, VIRGINIA *Leonard, Mo.*
 GUILFORD, HELEN *Keytesville, Mo.*



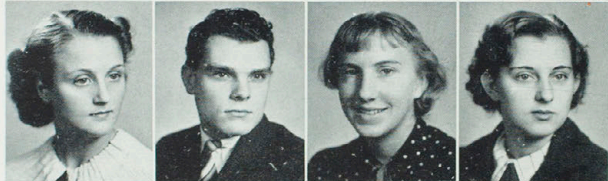
1938 FRESHMEN



GULLETT, DICK *Harrisburg, Mo.*
 GUTHRIE, JOHN *Kirksville, Mo.*
 HALL, DOROTHY *Luary, Mo.*
 HARRINGTON, HELEN *Atlanta, Mo.*



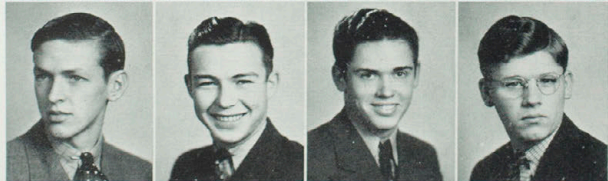
HARRISON, GLENN *Green Castle, Mo.*
 HART, HELEN *Corydon, Mo.*
 HARTELL, RUTH *Wyaconda, Mo.*
 HARVEY, VIVIAN *Arbela, Mo.*



HAWKINS, MARY RUTH *Kirksville, Mo.*
 HAYDEN, RICHARD *Wyaconda, Mo.*
 HAYES, EUNICE *Memphis, Mo.*
 HAYES, MILDRED *Bucklin, Mo.*



HEABERLIN, PAUL *Kirksville, Mo.*
 HEIMER, FRED *Brunswick, Mo.*
 HENDREN, SUE *Leonard, Mo.*
 HENRY, GEORGIA *La Belle, Mo.*



HENRY, MARVIN *Whiteside, Mo.*
 HENSLEY, ROBERT *Kirksville, Mo.*
 HIRSCHMAN, GEORGE *Cherokee, Ia.*
 HODGES, WAYNE *Kahoka, Mo.*



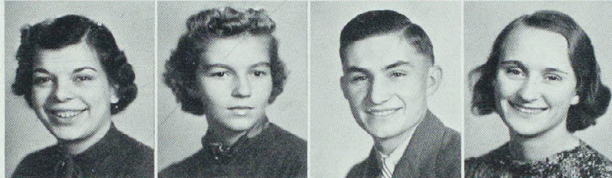
HOLST, DOLCY *Glasgow, Mo.*
 HOWELL, BOB *Kirksville, Mo.*
 HUFF, ARTHUR *Memphis, Mo.*
 HULEN, CHARLES *Centralia, Mo.*

1938 FRESHMEN

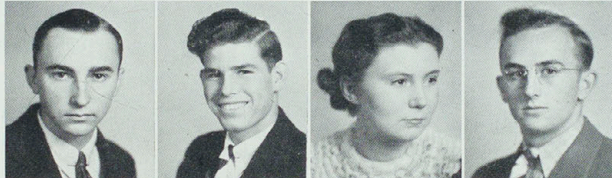
HULL, HELEN*Kirksville, Mo.*
 HUNSAKER, CAROLINE*Novelty, Mo.*
 HUNT, DOROTHY*Rakeport, Mo.*
 HUNT, HELEN*Brashear, Mo.*



INGRAHAM, JOELLA*Oskaloosa, Ia.*
 JAYNE, RUTH*Kirksville, Mo.*
 JONES, QUENTIN MYERS*Arbela, Mo.*
 KETCHAM, JEAN*Atlanta, Mo.*



KING, HUBERT*Revere, Mo.*
 KINKADE, PAUL*Kahoka, Mo.*
 KREMBS, CAROLINE*Shelbina, Mo.*
 KUMM, KARL WILLIAM*Kirksville, Mo.*



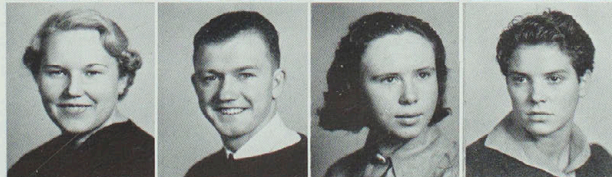
LABONTA, EDITH*Brunswick, Mo.*
 LANE, MILDRED*Rutledge, Mo.*
 LASSWELL, HELEN*Williamstown, Mo.*
 LAUGHLIN, GEORGE*Kirksville, Mo.*



LAW, DOROTHY*Pollock, Mo.*
 LESLIE, JANET*La Belle, Mo.*
 LEWIS, CAROLYN*Fulton, Mo.*
 LEWIS, CLARAMAE*Powersville, Mo.*



LITTLEHALE, MARGARET*Madrid, Ia.*
 LONGWORTH, WAYLAND.....*Ft. Madison, Ia.*
 LOAFBOURROW, WANITA.....*Green City, Mo.*
 LOUGHRIDGE, POLLY*Unionville, Mo.*



1938 FRESHMEN



LUDWIG, FRIEDA*Kirksville, Mo.*
 MAGEE, GEORGE*Oakwood, Mo.*
 MALLINKRODT, ANNA*Augusta, Mo.*
 MARCH, TRESSIE*Higbee, Mo.*

MARKS, GERALDINE*Monticello, Mo.*
 MARSHALL, BETTY*Glenwood, Mo.*
 MARSOT, EDWARD*Williamstown, Mo.*
 MARTIN, JOSEPHINE*Salisbury, Mo.*

MARTIN, THOMAS*Granger, Mo.*
 MAY, EUNICE LOUISE*Curryville, Mo.*
 MCCOLLUM, VIRGINIA*Kirksville, Mo.*
 MCCONNEL, MARIE*Kirksville, Mo.*

McFARLAND, EDWIN*Paris, Mo.*
 MCKASSON, ELEANOR*Kirksville, Mo.*
 MCKAY, ADA MAE*Knox City, Mo.*
 MCKINNEY, ROBERT LEE*La Plata, Mo.*

McKINNEY, RUTH*Kirksville, Mo.*
 McNABB, VIRGINIA*Queen City, Mo.*
 McNEELY, LORRAINE*Atlanta, Mo.*
 MEEKS, BILLY*Ethel, Mo.*

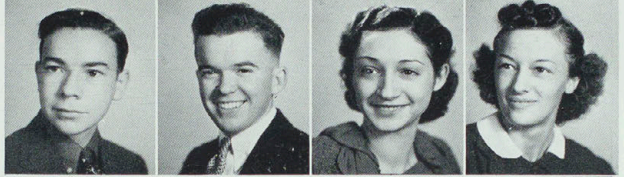
MEILICKE, WILLIAM*Brashear, Mo.*
 MEYER, GERALDINE*Thompson, Mo.*
 MILLEMON, RUTH*Mercer, Mo.*
 MILLER, ALVIN*Iowa City, Ia.*

1938 FRESHMEN

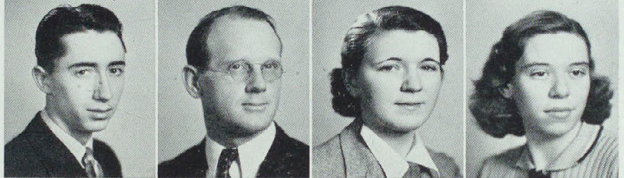
MILLER, CHARLINE*Greentop, Mo.*
 MILLER, DOROTHY*Kirksville, Mo.*
 MILLER, MADELINE*Baring, Mo.*
 MILLER, THELMA*Milan, Mo.*



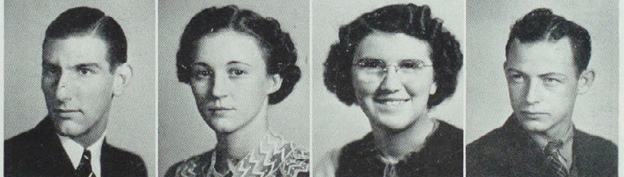
MILLS, JOHN*Perry, Mo.*
 MILLSAP, MAX*Powersville, Mo.*
 MOFFETT, GEORGEANNA*Roger, Mo.*
 MORELOCK, LOUISE*Kirksville, Mo.*



MORGAN, RAYMOND*Ethel, Mo.*
 MORRISON, BYRON*Brashear, Mo.*
 MORRISON, HELEN*Kirksville, Mo.*
 MYERS, EILEEN*Kirksville, Mo.*



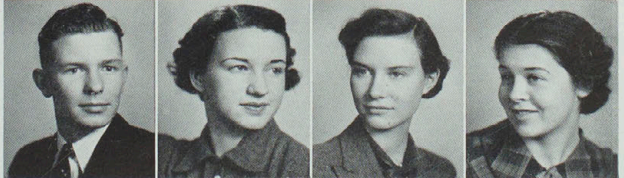
MUDD, JAMES*Edina, Mo.*
 MUELLER, AGNES*St. Charles, Mo.*
 MUIR, CECIL*Green Castle, Mo.*
 MURDOCK, CHAMP CLARK*Milan, Mo.*



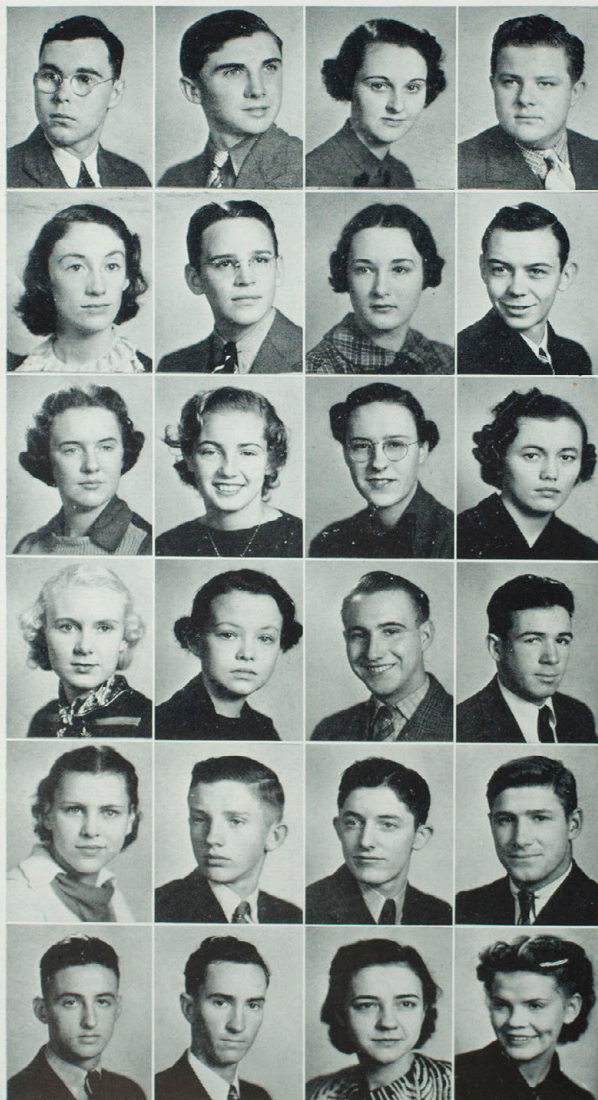
MURDY, VERA*Udell, Ia.*
 MURFIN, ROSALIND*Kirksville, Mo.*
 NASH, ROBERTA*Kirksville, Mo.*
 NICHOLS, BEATRICE*Kirksville, Mo.*



O'BRIANT, WILLIAM*Lancaster, Mo.*
 OLINGER, VERLA*Pollock, Mo.*
 OPAL, WILMA*Kirksville, Mo.*
 OVERSTREET, VERLA*New Boston, Mo.*



1938 FRESHMEN



OWEN, JOHN *Monroe City, Mo.*
 PARSONS, EUGENE *Pollock, Mo.*
 PARVIN, NADINE *Plattsburg, Mo.*
 PHILLIPS, LEON *Macon, Mo.*

PIPES, JANNICE *Milan, Mo.*
 POLLOCK, J. O. *Powersville, Mo.*
 PORTER, MARIAN *West Alton, Mo.*
 POWELL, DELBERT *Browning, Mo.*

PRIMM, SHIRLEY *Brashear, Mo.*
 RANSOM, MARGUERITE *Kirksville, Mo.*
 RAYMOND, BETTY RUTH *Sidney, Ill.*
 REED, FRANCES *Milan, Mo.*

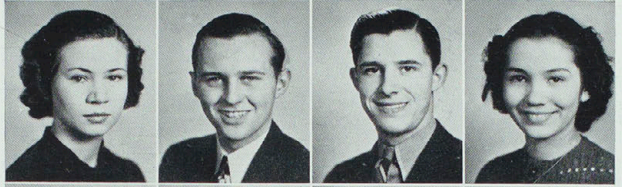
REEVES, CAROL *Memphis, Mo.*
 REID, MARY ELIZABETH *Peculiar, Mo.*
 REYNOLDS, WENDEL *Kahoka, Mo.*
 RICE, WILLIAM *Kirksville, Mo.*

RICHARDSON, HELEN *Harrisburg, Mo.*
 RICHEY, MAURICE *Novinger, Mo.*
 RILEY, CLAUDE *Kirksville, Mo.*
 ROBERTS, WILLIAM *Clark, Mo.*

ROSEBURY, DEAN *Stahl, Mo.*
 RUGH, ORVILLE *Granger, Mo.*
 RUSH, VERLEE JUNE *Memphis, Mo.*
 RUSSELL, NELL *Kirksville, Mo.*

1938 FRESHMEN

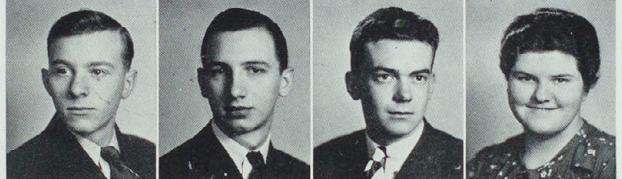
SALLADAY, GENEVIEVE*Kirksville, Mo.*
 SCHMID, DICK*Lancaster, Mo.*
 SCHMITT, ALLEN*Edina, Mo.*
 SELSOR, GWENDOLYN*Kirksville, Mo.*



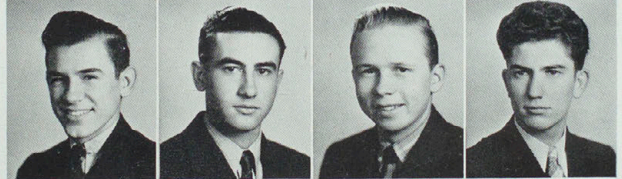
SEVITS, WALLACE*Kirksville, Mo.*
 SHEPHERD, DORIS*Slater, Mo.*
 SHEPPERSON, WILBUR*Arbela, Mo.*
 SHINN, NEVA JEAN*Kirksville, Mo.*



SIDWELL, RICHARD*Queen City, Mo.*
 SIMMONS, R. W.*Memphis, Mo.*
 SINGLEY, LYNN*Kirksville, Mo.*
 SLAUGHTER, MADGE*Queen City, Mo.*



SLEYSER, FRED*Perry, Mo.*
 SMITHSON, ROBERT*La Plata, Mo.*
 SPARKS, PRESTON*Kirksville, Mo.*
 SPEES, BEECHER*Newark, Mo.*



STANLEY, VERNON*Kirksville, Mo.*
 STANFIELD, L.*Shelbyville, Mo.*
 STARBUCK, HELEN*Kirksville, Mo.*
 STEWART, PAULINE*Osborn, Mo.*



STILLWELL, MARY*Lacerne, Mo.*
 STRAIGHT, CLARA*Yarrow, Mo.*
 STRAIGHT, RUTH*Yarrow, Mo.*
 STUTLER, HELEN*Boynnton, Mo.*



1938 FRESHMEN



SULLIVAN, MARY*Glasgow, Mo.*
 TAYLOR, JERRY*Kirksville, Mo.*
 THORPE, VENUS*Green City, Mo.*
 THOMAS, MARY LOU*La Grange, Mo.*

THURMAN, LATHELLA*La Plata, Mo.*
 TIPTON, FRANCES*Madison, Mo.*
 VAN METER, PAUL*Queen City, Mo.*
 VAN FOSSEN, MARIAN*Humphreys, Mo.*

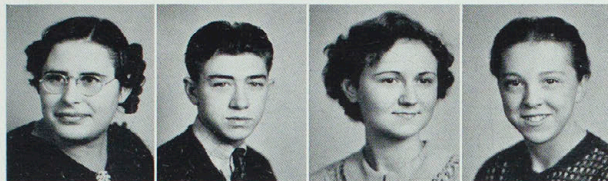
VAN SICKEL, COLENE*Kirksville, Mo.*
 WAGNER, ELAINE*Kirksville, Mo.*
 WAGNER, WILLARD*Kirksville, Mo.*
 WAINSCOTT, ROY U.*Centralia, Mo.*

WALKER, MARGARET*Kirksville, Mo.*
 WALKER, MAXINE*Williamstown, Mo.*
 WARDEN, R. M.*Kirksville, Mo.*
 WARMOTH, ELIZABETH*Macon, Mo.*

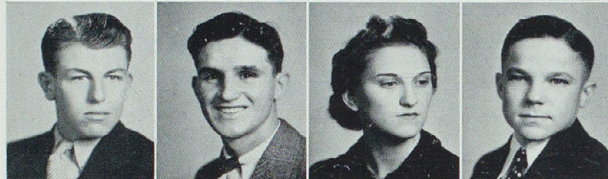
WATKINS, JANE*Coatsville, Mo.*
 WEAR, SIDNEY*Shelbina, Mo.*
 WEBB, HESTER*Hannibal, Mo.*
 WEBBER, HENRY*Stoutsville, Mo.*

WHITE, CHELLIS*Kirksville, Mo.*
 WILGUS, GERALD*La Plata, Mo.*
 WILLS, ELBERT*Kansas City, Mo.*
 WILSON, ROBERT*Kahoka, Mo.*

1938 FRESHMEN



WOLFE, JESSIE*Brookfield, Mo.*
 WOLFE, TED*Kirksville, Mo.*
 WORLAND, MARVYDA*Leonard, Mo.*
 WRIGHT, ELIZABETH*Kirksville, Mo.*



WRIGHT, LOREN*Kirksville, Mo.*
 YAGEL, MILO*Brookfield, Mo.*
 YATES, THELMA*Queen City, Mo.*
 YOCUM, DALE*Bynumville, Mo.*



YOCUM, DOROTHY*Bynumville, Mo.*
 YOUNG, BETTY*Kirksville, Mo.*
 YOUNG, HARVEY*Kirksville, Mo.*



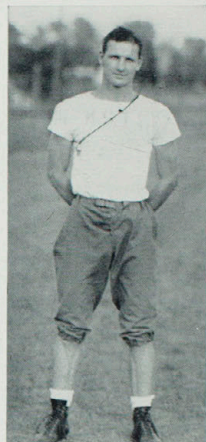
YOUNG, ISABELLE*Green Castle, Mo.*
 GOTSCHALL, GERRY*Kirksville, Mo.*

FOOTBALL

• ELEVEN lettermen returned to the team to form a nucleus for the sixty men of the 1937 football squad, as Coach "Fritz" Faurot directed the team for his third year.

Dropping from conference tops, after a long reign as kingpins, the Bulldogs took only one conference game. The team displayed good mid-field playing but lacked the necessary punch to score.

One consolation for Bulldog fans is that every team in the conference was gunning for Kirksville.



Head Coach
FRED FAUROT



1937 FOOTBALL SQUAD



1937 CO-CAPTAINS

MILLER AND SCHWENGELS

SEASON'S RECORD

MISSOURI "B"	32	KIRKSVILLE	0
MARYVILLE	0	KIRKSVILLE	0
TEXAS TEACHERS	41	KIRKSVILLE	12
ROLLA	6	KIRKSVILLE	6
CAPE GIRARDEAU	14	KIRKSVILLE	0
SPRINGFIELD	6	KIRKSVILLE	20
WARRENSBURG	13	KIRKSVILLE	6

1938 CO-CAPTAINS

ROARK AND YASKIW



BAILEY
E

BATTAGLER
T

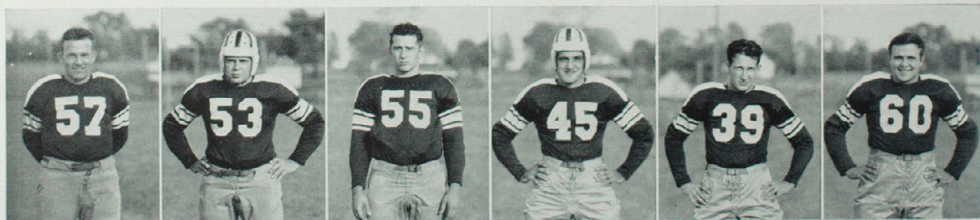
DAVIS
T

DEHART
B

FOUNTAIN
B

FOWLER
C

LETTERMEN



FRIESZ
B

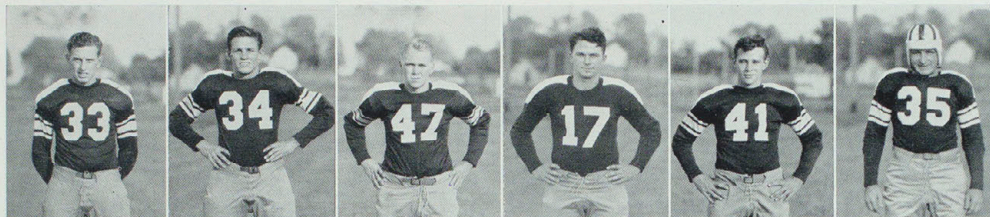
GORDON
G

GREGORY
F

GRILLI
G

MOODY
H

HUSTON
T



L. KING
H

R. KING
H

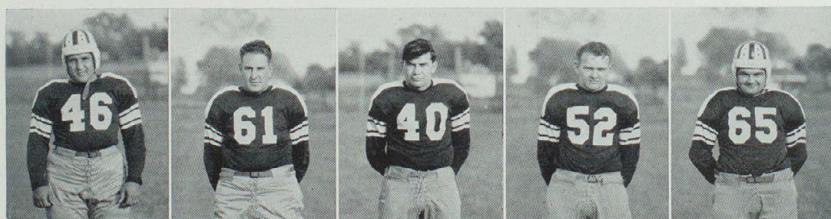
MILLS
C

PHILLIPS
H

ROARK
H

SHEEHY
E

O F 1 9 3 7



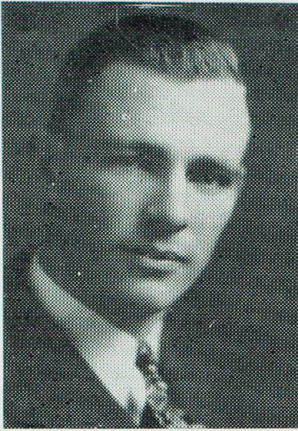
SIRAKAS
G

WALDEN
F

WARD
C

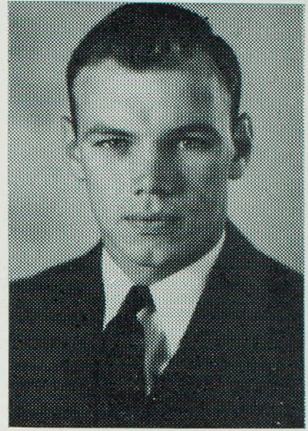
WILLS
B

YASKIW
G



MALCOLM EIKEN

THE NEW COACHES



EARL SVENDSEN

Earl Svendsen and Malcolm Eiken, stars of football and basketball, were appointed coaches of these two major sports as well as the minor sports in March to succeed Coaches Fred Faurot and George Wells, whose resignations took effect March 1.

Malcolm Eiken, who will be head basketball coach and assistant football coach, played on the University of Minnesota basketball team three years as a forward, lettering in 1935 and 1936. He was a football halfback three years, lettering in 1936, and played in the outfield on the university baseball team two years.

Eiken, after receiving his B. S. degree in physical education, coached Fairmont, Minnesota, High School football and basketball and track in 1936-37 and taught physical education. He came here from Fairbault, Minnesota, High School where his football team won 8 games and lost 1 while his basketball team lost only one game.

Earl Svendsen, who will be head football coach and assistant basketball coach, was on the grid squad of the University of Minnesota for three years, making letters at center in 1935 and 1936. He played guard on the basketball team in 1935 and 1936. Svendsen received his B. S. degree in physical education in 1937.

He played on the East team in the East-West New Year's Day game in San Francisco in 1937 and was a member of the college all-star team that played the Green Bay Packers, professional football champions, in Chicago that summer. Last fall Svendsen became a member of the Packers in the national pro league. He is also an expert golfer.

Winter



BOOK II

Contents

ORGANIZATIONS

BASKETBALL

Organizations





Sponsor Miss ALMA K. ZOLLER
Advisor Miss ETHEL HOOK
President CHARLOTTE BURDETTE



ALPHA SIGMA ALPHA

OTHER OFFICERS

Vice-President HELEN DEVERMAN
Secretary VIRGINIA BURNS
Treasurer MILDRED BRENNER
Registrar MARY MARGARET SHOUSH
Chaplain EDNA ROUNER
Editor VIRGINIA WAYLAND

MEMBERS



First Row: Deverman, Burns, Brenner, Shoush, Rouer, Wayland, Burnett.
Second Row: Monroe, Sloop, Smith, Triplett, Burns, Briggs, Crigler.
Third Row: Diekroeger, Givens, Haley, La Bonta, Porter, Russell, Thomas.
Fourth Row: Thompson, Webb, Young.

PLEDGES

Fourth Row continued: Cisco, Krembs, A. Mallincrodt, G. Mallincrodt.

Alpha Sigma Alpha was founded November 15, 1901 at the State Normal School, Farmville, Va., and is now a National Educational Sorority with twenty-five active chapters.

Alpha Beta Chapter was installed in Kirksville in 1914, having been formerly organized as Kappa Theta Psi.



President LOIS CARMICHAEL
Sponsor MISS LUCY SIMMONS



DELTA SIGMA EPSILON

OTHER OFFICERS

<i>Vice-President</i>	FLORENCE HULETT
<i>Treasurer</i>	PAULINE LESLIE
<i>Secretary</i>	FRANCES ZURCHER
<i>Corresponding Secretary</i>	LUCY MAE RECE
<i>Historian</i>	MARY ANN DUNHAM
<i>Sergeant-at-Arms</i>	JANE ANN DAILEY
<i>Chaplain</i>	MARY ELLEN GRIGGS

MEMBERS



First Row: Hulett, Leslie, Zurcher, Rece, Dunham, Dailey.

Second Row: Griggs, Houck, Johnston, Lathrop, McGlashon, Northcraft.

Third Row: Raye, Wisman, Ingraham, McNeely, Newcomer, Payne.

Fourth Row: Van Sickle, Gotschal, Kasiske.

PLEDGES

Fourth Row Continued: Black, Bryan, Dodd.

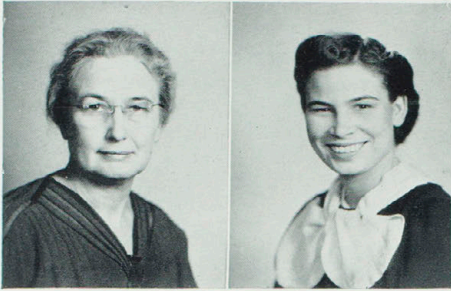
Fifth Row: Fisk, Hickman, Lewis, McKinney, Nichols, Northcraft.

Alpha Chapter of Delta Sigma Epsilon was founded at Miami University, Oxford, Ohio, September 23, 1914. There are now thirty active chapters. It is a National Educational Sorority belonging to the Association of Educational Sororities. Iota Chapter of Delta Sigma Epsilon was installed in Kirksville on January 28, 1921.

PATRONESSES

MRS. EDNA CAMPBELL

MRS. C. C. THOMPSON



SponsorMISS BRACY CORNETT
PresidentFLORENCE WELSZ



PI KAPPA SIGMA

OTHER OFFICERS

Vice-PresidentROSE BARNES
Recording SecretaryANNA LEE LAMBERT
Corresponding SecretaryAVERAL BELT
TreasurerEVALEE BLUE
Sergeant-at-armsERMA HINKSON
EditorJOAN ROLLINS



First Row: Barnes, Lambert, Belt, Blue, Hinkson, Rollins, Adair.

Second Row: Carothers, Dew, Moore, Shanana, Shaner.

PLEDGES

Second Row continued: Atterberry, Biotto.

Third Row: Fife, Hartley, McClelland, McConnell, McCollum, Parvin, Reid.

Fourth Row: Sallady, Selsor, Shinn, Thomas, Tipton, Wagner, Woolf.

PATRONESSES

MRS. CLARA CLEVINGER

MRS. C. J. BAXTER

Pi Kappa Sigma was founded at Michigan State Teachers College, Ypsilanti, Michigan, on November 17, 1894. It is a National Sorority belonging to the Association of Educational Sororities.

There are now twenty-nine active chapters. Pi chapter was installed in the Northeast Missouri State Teachers College July 25, 1924.



SponsorMISS VIOLA MAGEE
PresidentROBERTA PHELPS BIGSBY



SIGMA SIGMA SIGMA

OTHER OFFICERS

Vice-PresidentCHARLOTTE VANDIVER
Recording SecretaryMARY LOUISE ROBINSON
Corresponding SecretaryNORINE ATOR
TreasurerLOUISE HALL
Keeper of GradesHELEN WALKER
SentinelJOYCE PAGE
Triangle CorrespondentBETTY McCLELLAND



First Row: Vandiver, Robinson, Ator, Hall, Walker, Page.

Second Row: McClelland, Bray, English, Farrington, Hardy, Jones, Manning.

Third Row: Mills, Myers, Seeman, Williams, Taylor, Werner, Beckner.

Fourth Row: Duncan, Gahan, Hart.

PLEDGES

Fourth Row continued: Hawkins, Jayne, Loughridge, McKasson.

Fifth Row: Miller, Morelocke, Murdock, Murfin, Ransom, Reeves.

PATRONESSES

MRS. C. E. STILL

MRS. GEORGE STILL

MRS. CECIL CLARK

MRS. SETH THOMAS

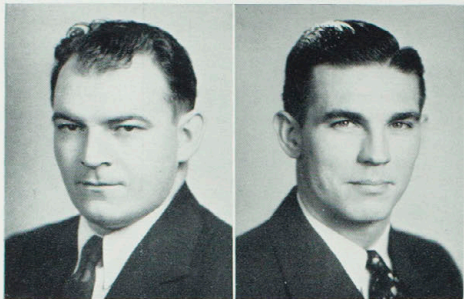
MRS. F. L. BIGSBY

MRS. J. C. MILLS, JR.

MRS. FRANK MILLER

MRS. JIM REED

Sigma Sigma Sigma was founded at Virginia State Normal School, Farmville, Virginia, April 20, 1898. It is now exclusively an Education Sorority belonging to the Association of Education Sororities. There are thirty-two active chapters. Mu Chapter was installed November 20, 1915, at Kirksville. The group previously existed on the campus as Sigma Delta Chi.



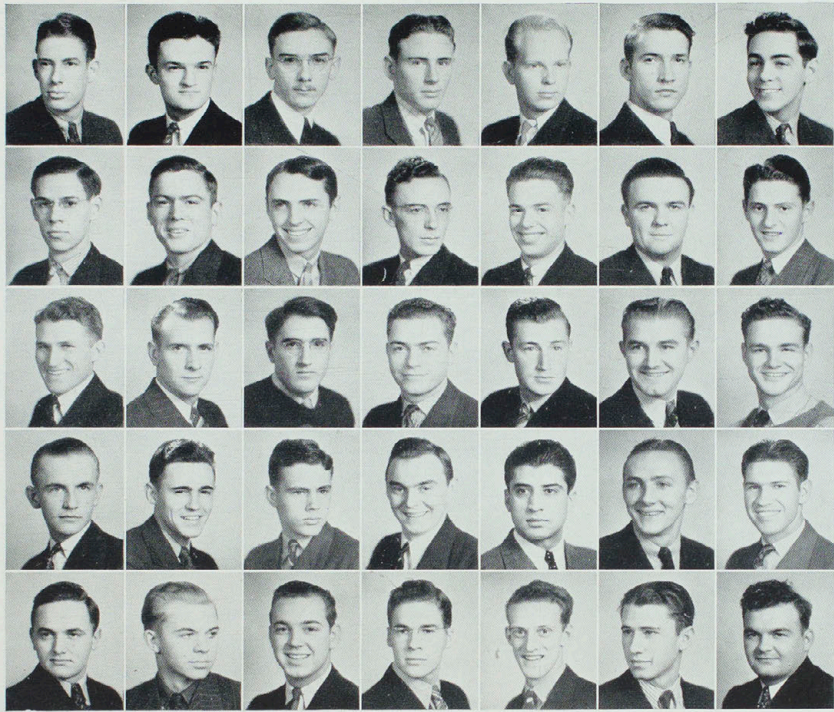
SponsorDR. WRAY RIEGER
PresidentJOE BAILEY



PHI SIGMA EPSILON

OTHER OFFICERS

Vice-PresidentPHILLIP KELLY
Secretary-TreasurerDICK JONES
CorrespondentROY SIMPSON
ConductorWENDELL GUDKA



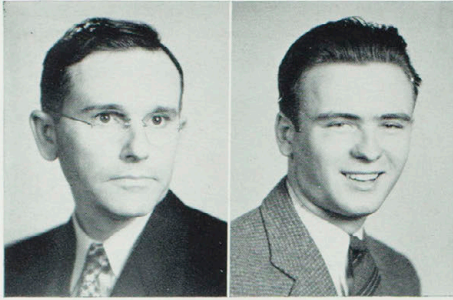
First Row: Kelly, Jones, Simpson, Gudka, Albright, Berry, B. Bondurant.
Second Row: D. Bondurant, Branstetter, Crawford, Cole, Creamer, Davis, Diehl.
Third Row: Dowell, Elson, Eppenstein, Fountain, Fox, Freidmeyer, Koeppe.
Fourth Row: Malone, Martin, Morse, Mullanix, Phialas, Schwengels,
 Shanight.
Fifth Row: Sterling, Still, Stuckey, Thoroughman, Troutman, Turner,
 Yaskiw.

PLEDGES

Karl Adkins, Ralph Brenizer, Charles Chapman, Robert Crookshank, John Curry, Paul Epperson, Glenn Estes, Max Freeland, Lloyd Garrison, John Genola, Paul Heaberlin, James Mudd, Roscoe Pearce, Douglas Peck, Max Powell, Arnold Prater, Ralph Shain, Fred Sleyster, Francis Wadsworth, Willard Wagner, Elbert Wills, Milo Yagel.

Phi Sigma Epsilon, a national teachers college Social Fraternity, was organized at Kansas City, Missouri, December 1927.

This chapter was first organized in the summer of 1925 as a local fraternity under the name of Sigma Delta Tau, and in 1927 it became affiliated with Phi Sigma Epsilon as Gamma Chapter which is now one of the twelve active chapters.



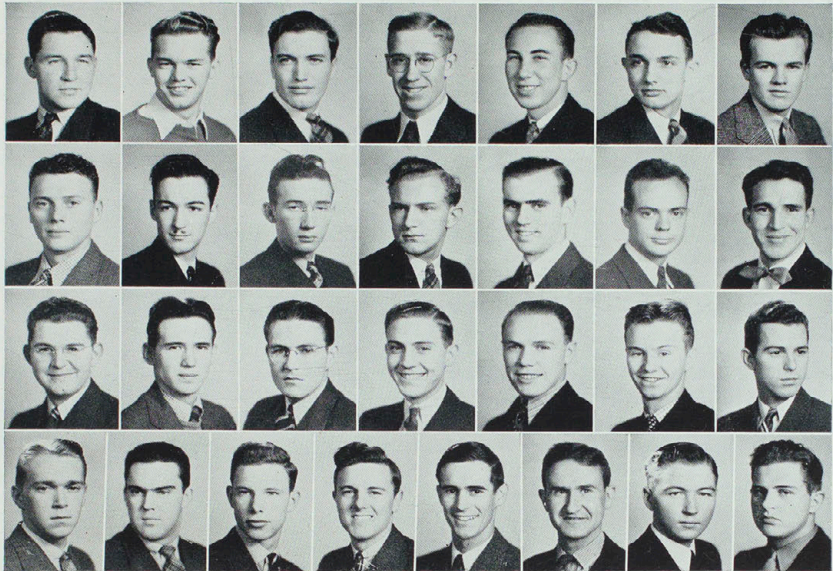
SponsorDR. BARRETT STOUT
PresidentBILLY LEE TURNER



SIGMA TAU GAMMA

OTHER OFFICERS

Vice-PresidentROBERT SHOUSH
SecretaryDAVID FREEMAN
TreasurerKERLIN SEITZ
Correspondence SecretaryDAVID BRUNBERG



First Row: Shoush, Freeman, Seitz, Brunberg, Adams, Albright, Ames.
Second Row: Borton, Busick, Draper, Erickson, Farnsworth, Garth, Green.
Third Row: Handley, Hartford, Heather, Jeffries, Johnson, Laughlin, McLeod.
Fourth Row: Mills, Parcell, Reeves, Sees, Sloop, Sykes, Van Sickel, Winn.

PLEDGES

Billy Baker, Billy Bigsby, Wesley Hardin, Leonard King, Ralph King, Lee Klesner, Hildreth Moody, Elmer Pundman, Dick Schmid, Harold Sparks.

Sigma Tau Gamma, the oldest and largest social teachers college fraternity in existence, was founded at the Central Missouri State Teachers College at Warrensburg, Missouri, in July, 1921. Beta Chapter was the second to be established of the now seventeen active chapters in existence, all in four-year teachers colleges. Beta Chapter existed until 1921 as the Phi Lambda Epsilon Fraternity.



PI KAPPA DELTA

Front Row: Mr. Collins, Penelope Love, Lois Shaner, Mr. Avison.
Middle Row: Mr. Cornwell, Nancy Wells, Irene Kuhns, Frederic Finchum.
Back Row: Francis Hedrick, Dale Bondurant, Noah Richardson, Paul Schwada, Charles Cornwell.

Pi Kappa Delta, honorary speech fraternity, was founded by Prof. E. R. Nichols in 1913. Today Pi Kappa Delta covers work in debate, oratory, and extemporaneous speaking.

Theta Chapter was established at the Northeast Missouri State Teachers College in 1930 with fifteen charter members. Clifton Cornwell, sponsor of the organization now, was one of the original members. Requirements for entry into the speech fraternity are to take part in three non-decision or two decision intercollegiate debates, or to compete in one oratory or extempore contest.

READERS ROUND TABLE



Back Row: Brown, Hedrick, Mr. Avison, Schwada, Jenkins.
Center Row: Epperson, Cornwell, P. Greene, F. Greene, Keller, Holcroft.
Front Row: Mr. Collins, Guilford, Ellett, Love, Kuhns, Mills, Mr. Cornwell.

COLLEGE PLAYERS

College Players is an organization in which no special requirements must be met to become a member. An interest in dramatics combined with the desire to learn and participate will gain admittance.

During the school year over one hundred students work together to study and perform the best of dramatic literature, their program consisting of two one-act plays presented fortnightly throughout the year and three or four major productions.

Social activities also find a place in College Players' program with the organization sponsoring several social affairs for its members.





First Row: Welsz, Burdette, Phelps, Carmichael, Blue.

Second Row: Belt, Burns, Leslie, Griggs, Hall, Farrington.

PAN-HELLENIC COUNCIL

President FLORENCE WELSZ, Pi Kappa Sigma
Recording Secretary CHARLOTTE BURDETTE, Alpha Sigma Alpha
Corresponding Secretary ROBERTA PHELPS BIGSBY, Sigma Sigma Sigma
Treasurer LOIS CARMICHAEL, Delta Sigma Epsilon

MEMBERS

PI KAPPA SIGMA

Florence Welsz
 Evalee Blue
 Averal Belt

ALPHA SIGMA ALPHA

Charlotte Burdette
 Laura Lou Courtney
 Virginia Burns

DELTA SIGMA EPSILON

Lois Carmichael
 Pauline Leslie
 Mary Ellen Griggs

SIGMA SIGMA SIGMA

Robertta Phelps Bigsby
 Louise Hall
 Elnora Lee Farrington



First Row: Miss MaGee, Barnes, Vandiver, Paris, Hamilton, Carmichael, Brenner.
Second Row: Griggs, Hinkson, Jamison, Jones, Mallinchrodt, McKay, Norris.
Third Row: Olinger, Reid, Robinson, M. Smith, M. M. Smith, Thorpe, Werner.

ELLEN H. RICHARDS CLUB

OFFICERS

<i>Sponsor</i>	MISS LORA MAGEE
<i>President</i>	ROSE BARNES
<i>Vice-President</i>	CHARLOTTE VANDIVER
<i>Secretary</i>	FRANCES PARIS
<i>Treasurer</i>	MARJORIE HAMILTON
<i>Reporter</i>	LOIS CARMICHAEL

The Ellen H. Richards Club was named for an outstanding leader in Home Economics. The club has had a continuous existence for 18 years.

Any girl interested in the home economics group is eligible for membership.

The two main activities of the club are to raise money to send girls to professional meetings, and to help the home economics group to become better acquainted with each other. The club's main campus activity is preparing lunch for the annual high school Senior Day.

One social and one program meeting each month constitute the organization's social activities. However, each year the Ellen Richards Club has an elaborate Christmas Party. This has become sort of a tradition, the function having been given annually for the last 15 years.



First Row: Richardson, Schwada, Towne, Seitz, Dr. Burroughs, Mrs. Clevenger,
 Dr. Hudson, Mr. Hawk.
Second Row: Miss Simmons, Albright, Bailey, Brown, Busick, Caster, Cornwell,
 Casey.
Third Row: Dunham, Evans, Fisher, Friesz, Garby, Grilli, Gross, Hagans.
Fourth Row: Hedrick, Johnson, Keller, Minor, Malloy, Myers, Price,
 Prindle.
Fifth Row: Siebold, Sheehey, Thorpe, Wayland, Williams, Worthington,
 Yaeger.

HISTORICAL SOCIETY

OFFICERS

PresidentNOAH RICHARDSON
Vice-PresidentPAUL SCHWADA
Secretary-TreasurerRUTH TOWNE
ReporterKERLIN SEITZ

This organization was founded in 1905 by the following men: Dr. Eugene Fair, Professor J. T. Vaughn, Representative E. O. Jones, Superintendent Charles Banks, and J. H. McKinney. Every two weeks meetings were held at ten o'clock on Saturday. The meetings were two hours in length, the programs consisting of a worthwhile discussion by one of the members, were planned many months in advance. Each member of the society was expected to give some thought to the subject in the round table discussion. With the exception of a very few years, the society has ben active, and has maintained a high standard in its programs. At the present time the society meets every two weeks or the first and third Wednesdays of each month.



McGlashon
Welsz
Loughridge
Spath
Hulett
Farrington
Miss Fuller
Miss Dodson

Alair
Ator
Atterberry
Beckner
Batto
Borron
Branstetter
Brees

Furdette
Claire
Cox
Crisman
Daley
Daniels
Depew
Diggs

Early
Edrington
Embree
Epperson
Evans
Galban
Gotschall
Green

Green
Harris
Hartell
Jayne
Jones
Kasiske
Leslie
Leslie

McNabb
Morrison
Muldroff
Nash
Newcomer
Nichols
Radosevich
Ransom

Raye
Reeves
Robinson
Rollins
Russell
Sallady
Schneider
Shepard

Shepard
Shoush
Stewart
Thomas
Thorpe
Thudium
Tipton
Vandiver
Young

WOMEN'S ATHLETIC ASSOCIATION

OFFICERS

JEANNE MCGLASHON *President*
 FLORENCE WELSZ *Vice-President*
 POLLY LOUGHRIDGE *Secretary*
 MARTHA SPATH *Recording Secretary*
 FLORENCE HULETT *Treasurer*
 ELNORA LEE FARRINGTON *Historian*

The Women's Athletic Association was organized in the fall of 1924. The purpose of the organization is to further women's athletics and develop a spirit of sportsmanship.

The organization is a member of the American physical Education Association and each year sends delegates to the National Convention of the American Physical Education Association.



First Row: Miss Edith Dabney, Clark, Edrington, Haley, Price, Miss Bracy Cornett.

Second Row: R. Straight, C. Straight, Parvin, Rollins, Lambert, Page.

Third Row: Taylor, Bigsby, Bealmer, Gahan, Hagans.

THE HONORARY ART CLUB

The Honorary Art Club, reorganized in December 1924, is composed of students whose major interest lies in the field of fine and applied arts. Its purpose is to develop a wider knowledge and appreciation of art. An example of its work are the exhibits held two or three times a year.

The Art Club always decorates for the Christmas dance which is held each year.



First Row: Sirakas, Friesz, Huston, Dr. Wells, Mr. Faurot, Bailey, Brockman.
Second Row: Burnett, Crookshank, Davis, Fountain, Grilli, Jacobs.
Third Row: Kelley, Martin, Mills, Moody, Morse, Phialas.
Fourth Row: Reese, Schwengels, Seitz, Sheehy, Shoush, Wills, Yaskiw.

K CLUB

OFFICERS

<i>President</i>	JOHN SIRAKAS
<i>Vice-President</i>	LOUIS MILLER
<i>Secretary-Treasurer</i>	WILLIAM FRIESZ
<i>Sergeant-at-arms</i>	HARRY HUSTON
<i>Sponsors</i>	{ COACH GEORGE WELLS
	{ COACH FRED FAUROT

To be eligible for membership in the K club a man must have won his letter in one of the major sports. The requirements for winning a letter are fixed by the athletic committee.

The annual K Club dance is a feature social activity on the campus. At this time letters and other awards are presented.



First Row: Schwehn, Werner, Jeffries, McLeod, Gross, Mr. Heyd, Knight.
Second Row: Lawson, DeVore, Estes, Martin, Stuckey.

GERMAN CLUB

OFFICERS

<i>President</i>	JOHN MARTIN
<i>Vice-President</i>	CARL SCHWEHN
<i>Secretary-Treasurer</i>	ERMA KNIGHT
<i>Sponsor</i>	PROF. J. W. HEYD

The German Club is composed of students having had one quarter of German here or in high school. The club was organized October 19, 1933, and has been meeting fairly regularly every week or every other week without public announcement. The organization has been stimulated solely by the student members.

The club is interested in German life and civilization exemplified by the songs and writings of outstanding Germans.



First Row: Roberts, Myers, Miss Spaulding, Sleyster, Kumm, Wainscott.
Second Row: Phillips, Wells, Manning, Knight, Sees.
Third Row: Huffman, Shores, Waller, Handley, Eger.

FRENCH CLUB

OFFICERS

<i>President</i>	WILLIAM PHILLIPS
<i>Vice-President</i>	ERMA KNIGHT
<i>Secretary-Treasurer</i>	RAY ROBERTS

The French Club was organized in 1932 under the direction of Miss Nan E. Wade, now on leave of absence.

The purpose of the organization is to provide for its members an intellectual interest in the cultural knowledge of the French nation and its peoples. This is accomplished through a series of programs given both by the club's members and by guest speakers. The business meeting of the club is conducted in French. The club is open to French students and all others interested in France and French life.



Left to Right: Radosevich, Miss Fuller, Jones, Adair, Miss Dodson, Rollins.

EUCHARIS

OFFICERS

President MARGARET RUTH JONES
Recorder ELMA RADOSEVICH

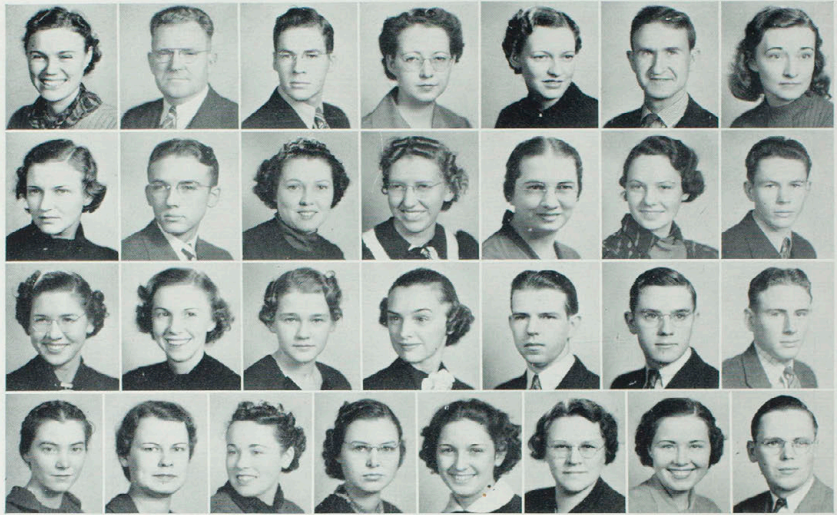
OTHER MEMBERS

Mary Margaret Shoush Mary Louise Robinson Martha Spath

FACULTY MEMBERS

Miss Frances Fuller Miss Thelma Dodson

Eucharis was organized in January 1935, by girls having won the highest award given by the Women's Athletic Association, and evidencing a continued interest in the field. Its purposes are to provide opportunity for advanced leadership in dance and sports, to present latest materials of interest to those members who entertain a special desire for knowledge in these fields, and to offer opportunity for training of the members who shall endeavor to promote higher ideals and a high professional spirit in physical education activities.



First Row: Woolf, P. O. Selby, Thoroughman, Hardin, Kasiske, Sykes, Evans.

Second Row: Akers, Allen, Ator, Bell, Miss Bruns, Cox, Collins.

Third Row: Daniels, Diekroeger, Deverman, English, Mr. Enochs, Garrison, Gudka.

Fourth Row: Heaberlin, Miss O'Briant, Monroe, Newcomer, Bigsby, Miss Roberts, Shaner, Thayer.

PI OMEGA PI

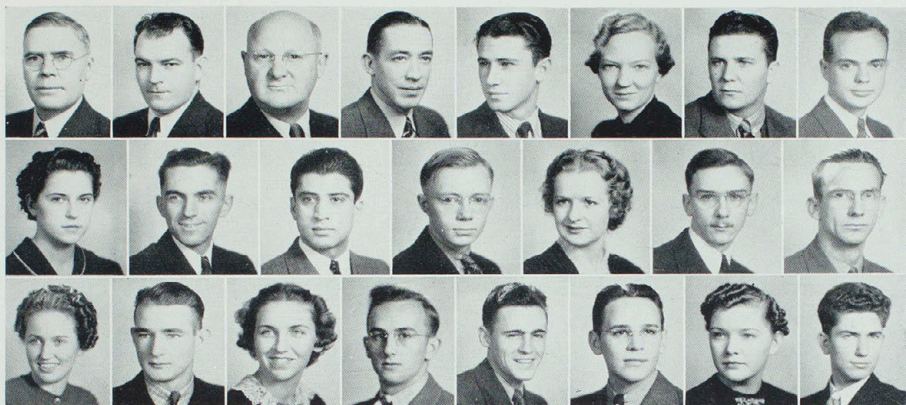
OFFICERS

<i>President</i>	MELBA WOOLF
<i>Vice-President</i>	GEORGE THOROUGHMAN
<i>Secretary</i>	MARJORIE HARDIN
<i>Treasurer</i>	BESSIE KASISKE
<i>Reporter</i>	KENNETH SYKES
<i>Historian</i>	MAYBELLE EVANS

The Alpha Chapter of Pi Omega Pi was instituted at Kirksville June 13, 1923, and initiated its two hundredth member during the winter quarter this year. The organization has spread to California and to New Jersey and has twenty-nine chapters. The national membership is more than three thousand.

Pi Omega Pi selects as members those students who have fifteen hours of business education or ten hours of business and five hours of education. Grades in the business subjects must be Superior and in all other college classes Medium or better. There are usually about twenty members.

The organization meets twice a month and its programs are of a varied nature. During the past year they have included a picnic, several parties, initiations, and many serious discussions.



First Row: Dr. Bray, Dr. Rieger, Dr. Clevenger, Dr. Trimble, Turner, Begole, Crookshank, Garth.

Second Row: Hulett, Lewis, Phialas, Roberts, Seaman, Simpson, Wadsworth.

Third Row: Claire, Eger, Farrington, Kumm, Martin, Pollock, Mallinkrodt, Spees.

SIGMA ZETA

OFFICERS

<i>Master Scientist</i>	ALLEN TURNER
<i>Vice-Master Scientist</i>	ROBERT CROOKSHANK
<i>Recorder-Treasurer</i>	CARABEL SEAMAN

Sponsors:

Dr. Bray
Dr. Rieger
Dr. Clevenger
Dr. Trimble

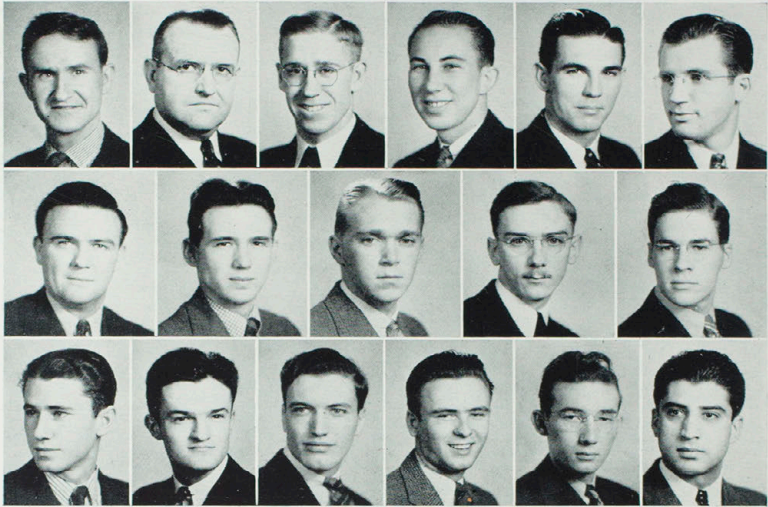
Actives:

Anita Begole
Bob Crookshank
J. P. Garth
Florence Hulett
Roy Lewis
Henry Roberts
Carabel Seaman
Roy Simpson
Francis Wadsworth

Associates:

Nina Claire
Maurice Eger
Elnora Lee Farrington
Karl Kumm
John Martin
I. O. Pollock
Gertrude Mallinkrodt
Beecher Spees

Sigma Zeta is a national honor society devoted to the interests of the fields of science and mathematics. Students may be admitted to this organization who have superior scholarship in these fields, and who have as much as a minor in one of the fields. There are two classes of membership. Underclassmen may be admitted as associate members, while active membership is limited to juniors and seniors. Delta Chapter was organized in this college in 1927.



First Row: Sykes, Dean L. A. Eubank, Brunberg, Adams, Bailey, Cornwell.
Second Row: Davis, Hartford, Mills, Simpson, Thoroughman.
Third Row: A. Turner, Jones, Seitz, B. Turner, Draper, Phialas.

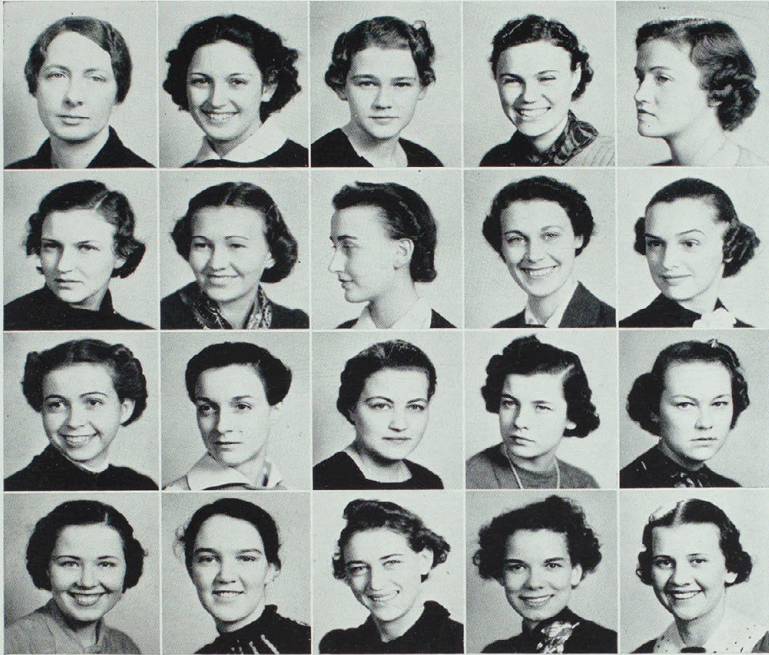
BLUE KEY

OFFICERS

<i>President</i>	KENNETH SYKES
<i>Vice-President</i>	JOHN R. RODERICK
<i>Secretary-Treasurer</i>	DAVID BRUNBERG
<i>Sponsor</i>	DEAN L. A. EUBANK

The Blue Key National Fraternity is an organization designed primarily for service to the school where the chapter is located. Its purposes are much the same as civic Rotary Clubs in any community. This fraternity was first established at the University of Florida in 1924. The first decision for enlargement into a national organization was in February, 1925. On April 5, 1926 the Northeast Missouri State Teachers College Chapter of Blue Key was installed. The local chapter is one of seventy-five chapters in colleges and universities all over the United States.

Members of Blue Key are selected on the following qualifications: 1. Scholarship (based on sixty hours of college credit); 2. Interest and affiliation with school activities; 3. Personality; 4. Moral standing.



First Row: Miss Agnes Slemmons, Bigsby, Deverman, Woolf, Kennett.
Second Row: Akers, Brenner, Burnette, Edrington, English.
Third Row: Hardy, M. R. Jones, Kuhns, Meyer, McGlashon.
Fourth Row: Shaner, Shoush, Robinson, Walker, Williams.

CARDINAL KEY

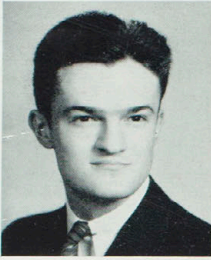
OFFICERS

<i>President</i>	CRYSTAL LOUGHEAD
<i>Vice-President</i>	ROBERTA PHELPS BIGSBY
<i>Secretary</i>	HELEN DEVERMAN
<i>Treasurer</i>	MELBA WOOLF
<i>Sergeant</i>	HELEN KENNETT
<i>Sponsor</i>	MISS AGNES SLEMONS

Cardinal Key was definitely organized as a national honor society for women in 1932, and is the sister organization to the Blue Key Fraternity. It is an organization in which women students get together to discuss ways of cooperating with the school to promote the welfare of the student body and the best interests of the institution.

The Northeast Missouri State Teachers College chapter of Cardinal Key was organized in the spring of 1934. During the past four years the sorority has awarded five scholarships, contributed money to the Student Loan Fund, sponsored "Open House" numerous times, given money to Christmas charity, and functioned in many services to the school.

The requirements for membership are Leadership, Scholarship, Participation in school activities, and Character.



RICHARD JONES



MR. HAYDEN

ALPHA PHI SIGMA

OFFICERS

<i>President</i>	RICHARD JONES
<i>Vice-President</i>	MARY MARGARET SHOUSH
<i>Secretary-Treasurer</i>	HELEN MYERS
<i>Sponsor</i>	STANLEY HAYDEN

Alpha Phi Sigma is an honorary scholarship fraternity for which one is eligible after having been a valedictorian or salutatorian in high school or after having reached certain high scholarship requirements on the college campus. Alpha Chapter was established on this campus in 1930. At the present time there are twelve active chapters.

The first national conclave was held in St. Louis in August, 1937. Thirty representatives of the various chapters throughout the United States were present.

At this conclave Richard Jones, president of Alpha chapter, was elected National Treasurer of the organization.



First Row: Allen, Atterbury, Ayers, Branstetter, Brees, Casey, Chambers.
Second Row: Clapp, Collins, Clare, DieKroeger, Diggs, Dodd, Elmore.
Third Row: Epperson, Evans, Freeland, Garrison, Gross, Gudka, Haley.
Fourth Row: Hardin, Heaberlin, Hinkson, Holcroft, Huffman, Johnston, King.
Fifth Row: Law, J. Leslie, M. Leslie, Marks, Martin, Miller, Monroe.
Sixth Row: Morrison, Myers, Opel, Payne, Price, Richardson, Shoop.
Seventh Row: Shoush, Simpson, C. Straight, R. Straight, Thorp, Thoroughman, Tipton.
Eighth Row: Towne, Wadsworth, Werner.

Also Jane Ann Dailey and Paul Schwada



First Row: Walker, Miss Cornett, Woolf, Eger, Holcroft, Prindle, Crookshank.
Second Row: Brunberg, Cornwell, Hardy, Johnston, Jones, Richardson.
Third Row: Schwada, Shaner, Smith, Summers, Turner, Wells, Wadsworth.

KAPPA DELTA PI

OFFICERS

<i>President</i>	HELEN WALKER
<i>Vice-President</i>	MELBA WOOLF
<i>Secretary</i>	ESTHER EGER
<i>Treasurer</i>	WANDA HOLCRAFT
<i>Historian Reporter</i>	MARY ALICE PRINDLE
<i>Sponsor</i>	MISS BRACY CORNETT

Kappa Delta Pi is an international honor society in education which was established March 18, 1911 and which invites to membership such persons as exhibit worthy educational ideals, sound scholarship, and adequate personal qualifications. The society now has 98 chapters in the United States.

The purpose of Kappa Delta Pi is to encourage its members to a higher degree of devotion to social service by fostering high intellectual and personal standards during the period of preparation for teaching and by recognizing outstanding service in the field of education.



First Row: Early, Zurcher, Miss Willie Whitson, Smith, Wisman.
Second Row: Northcraft, Johnston, Adair.
Third Row: Parsons, Schwada, Mills, Black, Welch, Eger.

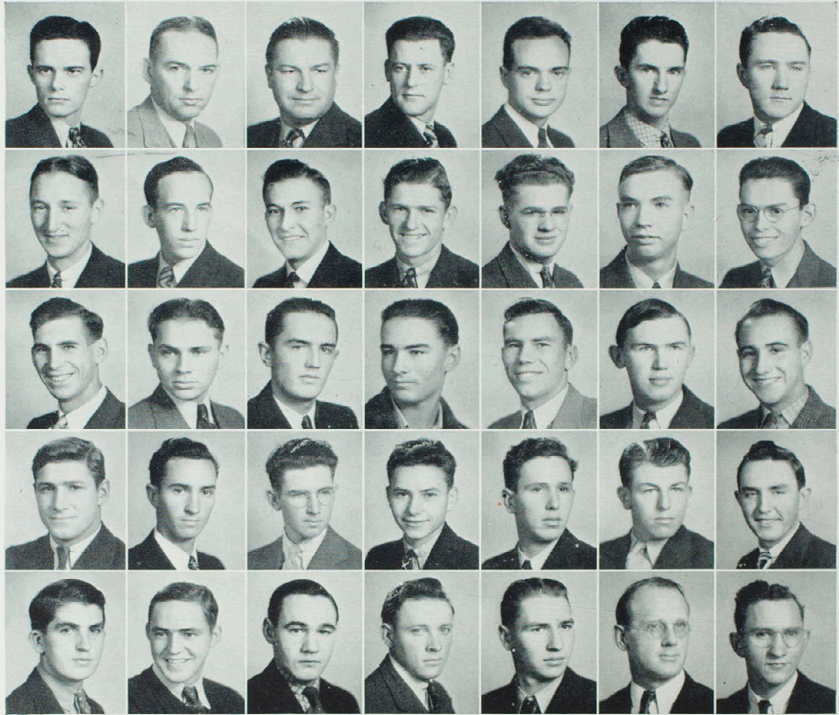
ASSOCIATION FOR CHILDHOOD EDUCATION

OFFICERS

<i>President</i>	FRANCES ZURCHER
<i>Vice-President</i>	ESTHER EGER
<i>Secretary</i>	JULIA ANNE JOHNSTON
<i>Treasurer</i>	MARJORIE SMITH
<i>Reporter</i>	JOYCE WISMAN
<i>Sponsor</i>	MISS WILLIE WHITSON

The Association for Childhood Education is an organization which has for its purposes to gather and disseminate knowledge of the movement for the education of young children, to bring into active cooperation all childhood interests including parent education, to promote the progressive type of education in nursery school, kindergarten and primary grades, and to raise the standard of the professional training for teachers and leaders in this field.

The local branch of A. C. E., which was organized in 1933, is closely affiliated with the National Association for Childhood Education which has headquarters in Washington, D. C. The local branch is organized in harmony with the general purposes of the national association, with the purpose of fostering the development of professional interest among its members through the study of the local significance of the problems undertaken by the national association and with the purpose of extending active membership in the group.



First Row: Green, Mr. Allen, Mr. Noble, Botts, Garth, Cochran, Webber.
Second Row: Estes, Bibee, Clark, V. Cochran, Dimmitt, Epperson, L. Green.
Third Row: Griffith, Guy, C. Erwin, R. Erwin, Meeks, Polson, Reynolds.
Fourth Row: Roberts, Rugh, Thiele, Wells, Willis, Wright, Yaeger.
Fifth Row: Wear, Boezner, DeVore, Evans, Holst, Meilicke, Morrison,
 M. Webber.

THE "AG" CLUB

OFFICERS

<i>President</i>	CHARLES GREEN
<i>Vice-President</i>	LEE BOTTS
<i>Secretary</i>	J. P. GARTH
<i>Treasurer</i>	KENNETH COCHRAN
<i>Sergeant-at-arms</i>	DELBERT WEBBER
<i>Sergeant-at-arms</i>	CARL ESTES
<i>Sponsors</i>	MR. NORVAL ALLEN
	MR. CHARLES NOBLE



First Row: Coughlin, Brunberg, Miss Slemons, Taylor, Phillips, Miller.
Second Row: Sloop, Yaskiw, Creamer, Green, Williams, Gaume.
Third Row: Tompkins, Eppenstein, Anderson, McNeely.

THE TEACHERS COLLEGE INDEX

During the twenty-nine year old history of the College paper, it was called the Index until 1931, then the Northeast Missourian, and this year was again named The Index. The paper, written and made up by members of a class in newswriting, this year won first place in a contest at Columbia University for Teachers College publications. The paper has participated in national and state competition since 1931, consistently receiving high awards.

The members of the staff for the fall, winter, and spring quarters of 1937-38 are: William Anderson, David Brunberg, Betty Carothers, Kenneth Creamer, Doyle Hilton, Herschel Eppenstein, Robert Gaume, Robert Graham, Emil Green, Barbara Taylor, Arthur Tompkins, William Phillips, Jack Coughlin, Virgil Bittiker, Orville Gregory, Emil McNeely, Louis Miller, Howard Sloop, Kenneth Sykes, Lucille Chipman, Richard Elson, Rubijohn Gorby, Louis Handley, Eleanor Keller, George Laughlin, Justine Monroe, Alice Murdock, Robert Roark, Forrest Schwengels, Betty Ruth Simpson, John Sirakas, John X. Waters, Roy Phillips, Mary Wells, Willard Wagner, Fred Sleyster, John Guthrie, Dale Bondurant, Raymond Knop, Ralph Farnsworth, Bryan Mourer.

Miss Agnes Slemons is the advisor.



Front Row: Bass, Morse, Miller, Captain Brockman, Nelmark, Snyder, Woods.
Second Row: Sees, Bohon, Reese, Knop, Wills, Coach Wells.
Back Row: Esteppe, Finchum, Sublette and Schwehn.

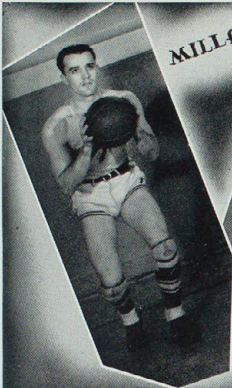
1937-38 BASKETBALL SQUAD

For the first time in four long, long years the 1937-38 edition of the Bulldog basketball team was able to look downward in the M. I. A. A. conference and see a team below them, as the Bulldogs finished out of the cellar for the first time in that length of time.

Coached by Dr. George Wells, the Bulldogs again took the inter-city championship by downing the Osteopaths in two straight games, both affairs being on the rough to rougher side.

Playing an off-and-on season the Bulldogs showed flashes of brilliance in conference play when faced with league winners, and then lost their form when faced with weaker opponents.

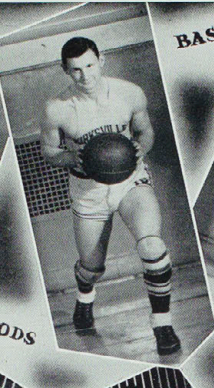
The "B" squad, coached by Elmer Osborn, went through the season with a win for every start.



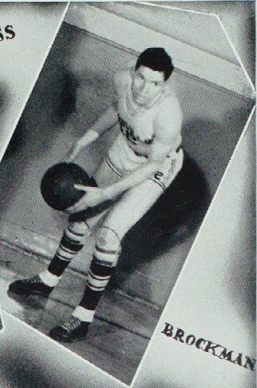
MILLER



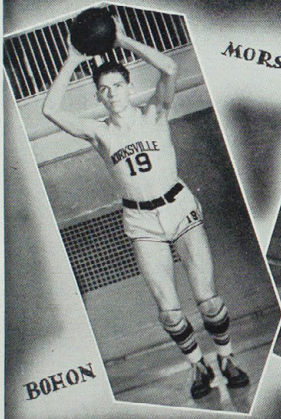
WOODS



BASS



BROCKMAN



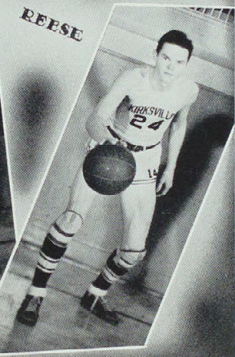
BOHON



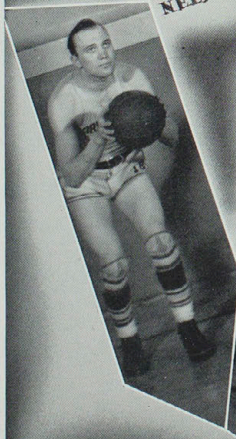
MORSE



SNYDER



REESE



NELMARK



KNOP

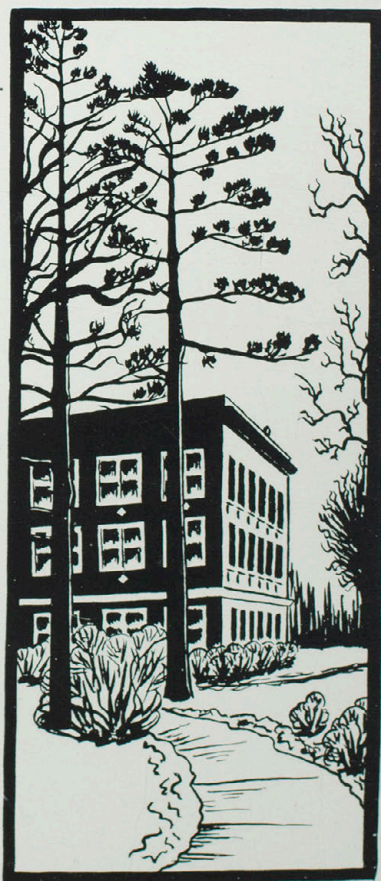


ISTEPPE



SCHWEEN

Spring



BOOK III

Contents

FEATURES

CHOIR

BAND

ECHO QUEENS

SNAP SHOTS



A CAPPELLA CHOIR

First Row: Lucille Muldrow, Irene Kuhns, Myra June Manes, Corrine Meyer, Dr. Barrett Stout, director; Georgene Payne, Gertrude Northcraft, Elizabeth Phillips, Wilma Peebles.

Second Row: Mary Margaret Smith, Clara Mae Lewis, Benjie Briggs, Lois Jenkins, Jean Blankenhorn, Virginia Bray, Edith La Bonta, Bernice Robine, Vera Katz.

Third Row: Parvin Jenkins, Eleanor Cisco, Ruth Williams, Dorothy Williams, Rolland Burch, Dale Sterling, Louise Werner, Wilma Welch, Mildred Diekroeger, Helen Kennett, Ralph Palmer.

Fourth Row: Paul Heaberlin, Dale Bondurant, Bob Crookshank, Billy Turner, David Freeman, Franklin Greene, Paul Greene, John Case, Merlin Evans, Gail Albright.

Fifth Row: David Brunberg, Gene Malone, Billy Reeves, Myron Greene, Harold Epperson, Kyle Terry, Laverne Cable, George Friedmeyer, Dallas Draper.

Other Members: Eugene Erickson, Eugene Graham, Lilly V. Haley, John Henry Winn, Armon Adams, Louis Burdman, John Roderick, Martha Oberg, Esther Burnett, Vera Fife.



THE TEACHERS COLLEGE BAND

KARL E. WEBB, *Director*

MEMBERS

Armon Adams
 Richard Ames
 David Brunberg
 Rolland Burch
 James Busick
 Helen Caldwell
 John Case
 Eleanor Cisco
 Kenneth Creamer
 Bob Crookshank
 John Curry
 Lodema Danner
 Dallas Draper
 Richard Elson
 Eugene Erickson
 Merlin Evans
 David Freeman

George Friedmeyer
 Eugene Graham
 Wendell Gudka
 John Guthrie
 Paul Heaberlin
 Fred Heimer
 Effie Mae Huffman
 Velva Rogers
 Maryland Shoop
 Charles Hulen
 Ursula Huls
 Leo Jeffries
 Parvin Jenkins
 Hubert King
 Edith La Bonta
 Ada McKay
 Lucille Muldrow

Ralph Palmer
 Elizabeth Phillips
 Elmer Pundman
 Billie Reeves
 John Roderick
 R. W. Simmons
 Lynn Singley
 Paul Strub
 Dale Sterling
 William Thrumen
 Roy V. Wainscott
 Robert Whisler
 John Henry Winn
 Burke Workman
 Olin Hutcherson
 Georgene Payne
 Francis Zurcher

This organization affords to students of this College a splendid opportunity to study some of the best music written for Concert Bands. Membership in this Bands is not restricted to major and minor music students; rather it is open for all who are interested in music and make it an avocation for their own enjoyment.

ECHO
QUEEN



Roberta Phelps Bigsby

THE COURT



EDITH LA BONTA
MARY ELLEN GRIGGS
VIRGINIA WAYLAND

BARBARA TAYLOR
JEANNE MCGLASHON
HELEN WALKER
JANE ANN DAILEY

MARJORIE GREEN
EDNA ROUNER
RUTH MCKINNEY



VOLLEY BALL

INDEPENDENT I

Front:

MAXINE GREEN
HELEN HUNT
IRIS BRES—*Captain*
RUTH HARTELL
MARTHA SPATH

Back:

JERRY TAYLOR
ELMA RADOSEVICH
HORTENSE GREENLEY
SHIRLEY PRIMM

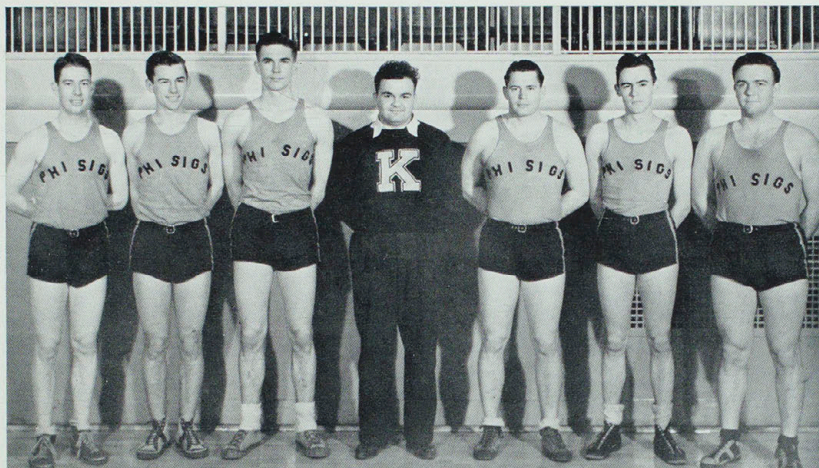


BASKETBALL

INDEPENDENT I

MAXINE GREEN
NELL RUSSELL
HORTENSE GREENLEY
MARTHA SPATH, *Captain*
ELMA RADOSEVICH
IRIS BRES
MARGUERITE RANSOM

BOYS' INTRAMURAL BASKETBALL WINNERS



Left to Right: Kelley, Sleyster, Bailey, Yaskiw (Coach), Gordon, Martin, and Davis.

"PHI SIGS A"

PLAYERS FROM ST. LOUIS AREA

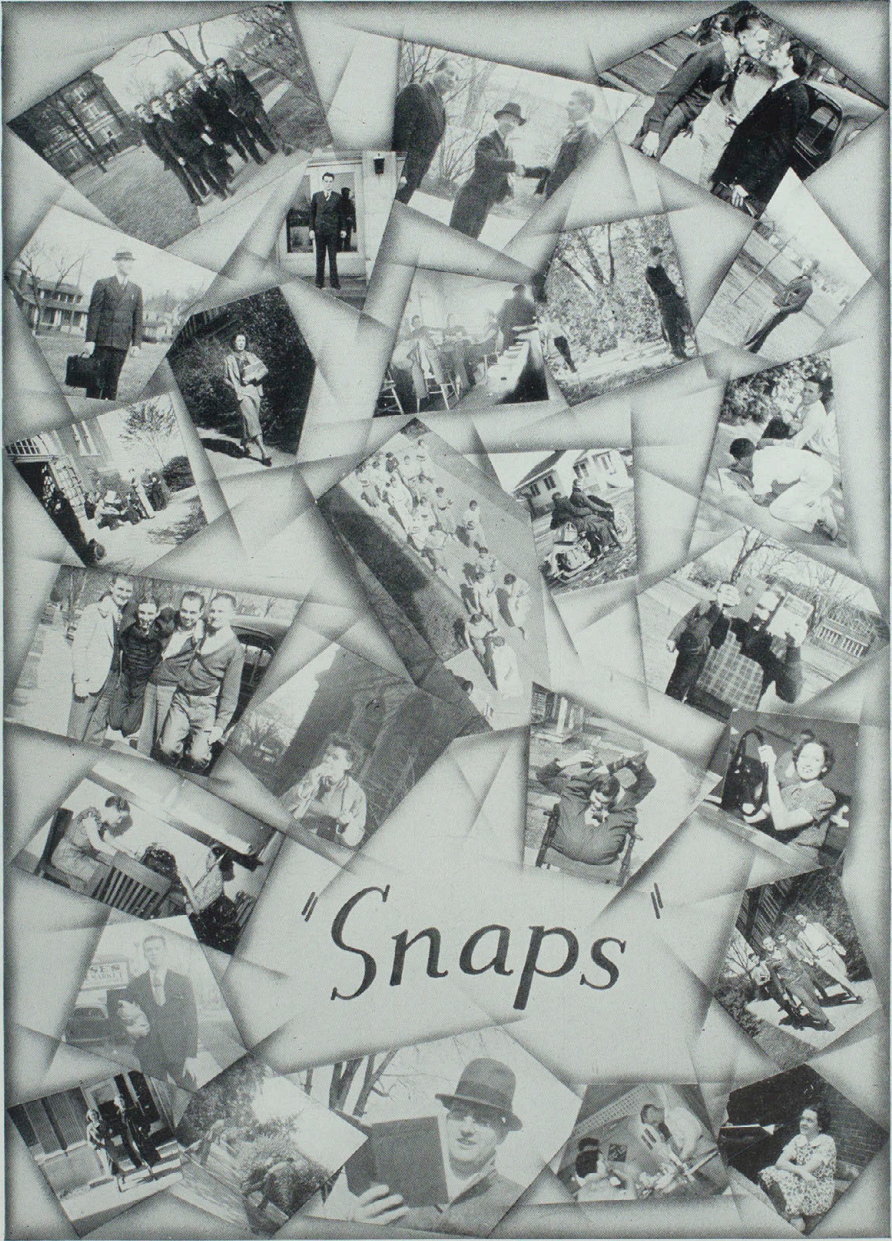


Left to Right: Assistant Coach Gladden, W. Friesz, J. Sirakas, T. Sheehey, W. Emerich, H. Huston, Assistant Coach Cavanah, A. Wunderli, L. DeHart, P. Ward, I. Hassler, Coach F. Faurot.

EVOLUTION OF THE INDEX




1. *The assignment*
2. *The interview*
3. *Writing the story*
4. *Setting the type*
5. *Composing the page*
6. *Reading proof*
7. *Final check*
8. *Printing*
9. *Reading the paper*
10. *Mailing out*
11. *The photographer*



"Snaps"





SUMMER OPERA
"ROBIN HOOD"

FALL PLAY
"DULCY"

NEW BUILDINGS
IN THE MAKING



MAINTENANCE FORCE

JOHN MOUNTAIN
HOWARD VICKROY
ROY LEWIS
JOHN MARTS



ERNEST HAWKINS
ERNEST SCOFIELD
JOHN JACK, retired
IRVIN MILEY
ORVILLE LAIR

Autographs

"JAHN AND OLLIER AGAIN"



Repeated acceptance by discriminating Year Book Boards has inspired and sustained the Jahn & Ollier slogan that gathers increasing significance with each succeeding year.

Modern wood-cut style illustration of Michigan Avenue looking north from Chicago Art Institute.

JAHN & OLLIER ENGRAVING CO.
817 West Washington Blvd., Chicago, Ill. - Telephone MONroe 7080
Commercial Artists, Photographers and Makers of Fine Printing Plates for Black and Colors

OUR CONGRATULATIONS

to Arthur Tompkins and Parvin Jenkins
and their associates on the successful
completion of the 1938 Echo.

We extend our appreciation to the
entire student body and faculty of
Northeast Missouri State Teachers
College.



ARTCRAFT PRESS



THE STUDENT HEADQUARTERS

We Carry a Complete Line
of Campus Needs

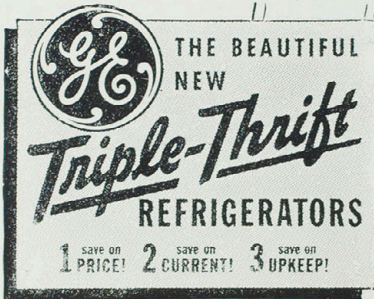
Carefully Selected
EDUCATIONAL
LITERATURE

THE BOOK STORE

Kirk Auditorium -:- Edna Millay Campbell

BAMBURG'S

BETTER CLOTHES



THE BEAUTIFUL
NEW
Triple-Thrift
REFRIGERATORS

1 save on PRICE! 2 save on CURRENT! 3 save on UPKEEP!

Bert Still

PLUMBING & HEATING CO.

Visit Our Showroom

And See A Complete Line of

GENERAL ELECTRIC
APPLIANCES

Warm Air Furnaces

Stokers

Crane Enamelware

Hot Water Boilers & Radiation : Plumbing Specialties

REPAIR WORK OUR SPECIALTY

110 SOUTH MAIN

PHONES 357-1849

R. J. Hurley Lumber Co.

<|||>
BUILDING
MATERIAL
MERCHANTS
<|||>

115 E. McPherson

Phone 39

STOUT'S MUSIC HOUSE

"EVERYTHING IN MUSIC"



RAY P. GARDNER
Jeweler

Phone 442

South Side Square



HOSPITAL AND CLINIC, 412 EAST PATTERSON

THE STAFF

EZRA C. GRIM, M.D.

General Surgery and Diseases of Women

E. SANBORN SMITH, M.D.

General Medicine and Diseases of Children

A. B. CRAMB, M.D.

X-ray, Fractures and Gastro-Intestinal Diseases

J. J. WIMP, M.D.

Obstetrics and Diseases of Women

SPENCER L. FREEMAN, M.D.

Diseases of the Eye, Ear, Nose and Throat

GEO. E. GRIM, M.D.

General Surgery and Medicine

SPECIAL ATTENTION GIVEN LABORATORY DIAGNOSIS AND
TREATMENT OF DIABETES

Complete Facilities for the Care of Obstetrical Cases

GRIM-SMITH HOSPITAL AND CLINIC

Kirksville, Mo.

• Phone 32

RICHELIEU PURE FOODS



MANNING'S



KARMEKORN SHOP

SWIFT'S ICE CREAM

Special Attention Given Party Orders

PHONE 430

213 SO. FRANKLIN

AUTO SALES CO.

AUTHORIZED

Chevrolet & Oldsmobile

SALES & SERVICE



Visit Our New Modern Showrooms



WASHINGTON AT MAIN



McPHERSON AT MAIN

PHONE 70

PHONE 88

HARRY S. JONAS, Manager

Compare
Our
Prices



Why Pay
More
Elsewhere

John Giovannini
Representative

121 N. Elson St.

Phone 115

Hours: 9 a.m.-5 p.m. Telephones: Office 730; Residence 766

ROSS C. ALLEN

DOCTOR OF

DENTAL SURGERY

Suite 205-6 Odd Fellow Building North-
west Corner of the Square

Over Bank of Kirksville

KIRKSVILLE, MISSOURI

COOK & BEATY

200 N. Franklin

Plumbing and Heating

—●—
STEAM, HOT WATER
AND WARM AIR
FURNACES

Telephone 157

Night Tel. 1944

"Say it with Flowers"



C. C. THOMPSON

FLORIST

Bank of Kirksville

KIRKSVILLE, MISSOURI

BANK OF FRIENDLY SERVICE

—●—
*Deposits Up To \$5,000.00 Insured by
Federal Deposit Insurance Corporation*

—●—
WE APPRECIATE YOUR BUSINESS

**TRUITT BROTHERS
MOTOR CO.**

● ● ●
BUICK — PLYMOUTH
DESOTO
SALES — SERVICE

● ● ●
401 N. Franklin — Phone 221

The Only Drug Store Giving

EAGLE STAMPS

—●—
FREE DELIVERY PHONE 422

—●—
SALISBURY'S
Northeast Corner of Square

The
Kirksville College of Osteopathy
and Surgery

IS THE LARGEST COLLEGE
TRAINING PHYSICIANS



THE NEW CLINIC BUILDING
and other improvements make the
plant more efficient than ever



*The 1937-38 Enrollment was the
Largest in History*



Visit the institution and learn what it
has to offer, both in the way of profes-
sional training and therapeutic service.

Kirksville College of Osteopathy
and Surgery

Kirksville, Missouri

ADAIR LUMBER CO.

FOR THE BEST IN BUILDING MATERIAL

PHONE 79

John A. Waddill, Mgr.

McLellan Stores Co.

—●—
5c TO \$1.00 STORE

—●—
West Side ☐

SHOES that have

FIT ● STYLE ● VALUE



Leading National Advertised Brands



HAYWARD BROS.

We Maintain a Modern Shoe Rebuilding
Department

Cook's Jewelry Store



"THE GUARANTEE STORE"



115 S. Franklin

Phone 1011

"Prices Always Lower"

Propst Cleaners



WE CALL FOR AND DELIVER



309 S. FRANKLIN

Phone 873

Herboth
KIRKSVILLE, MISSOURI
THE CLOTHIERS
GET TO KNOW US

SHINED • DYED
 HAVE YOUR
SHOES
 PROPERLY REBUILT
 "FACTORY METHOD"
PARSONS
 Franklin at Jefferson • Phone 191

Compliments of
"JOE"
 — • —
NATIONAL
 CUT-RATE DRUGS
 East Side Square — Phone 200

The TRAVELERS HOTEL



• KIRKSVILLE'S FIREPROOF HOTEL •

COFFEE SHOP
 CONNECTED

TAP ROOM IN
 BASEMENT

B. L. BONFOEY, Manager

F. W. Woolworth Co.
 5 AND 10 CENT STORE



SPECIAL COURTESY
 TO STUDENTS



West Side of □ Telephone 462

SMITH'S
 Nation-Wide Store



QUALITY GROCERIES

• Fresh Fruits and Vegetables •



First Door East of Family Theatre

Phones 886 — 887

The
CITIZEN'S NATIONAL
BANK

OF
KIRKSVILLE, MISSOURI



MEMBER FEDERAL RESERVE SYSTEM



Deposits up to \$5,000.00 insured by Federal Deposit
Insurance Corporation under Government Plan.

CAPITAL	\$100,000.00
SURPLUS AND PROFITS	100,000.00



LARGEST BANK IN NORTHEAST MISSOURI

*We solicit your business, and offer every service
consistent with sound and conservative banking.*

Robert Clark & Sons

— ● —
HARDWARE AND SPORTING GOODS

NORTH SIDE □

PHONE 12

National Utilities Co. OF MISSOURI

See Our Complete Line of
MAGIC CHEF RANGES
AND
AUTOMATIC WATER HEATERS
At Our Show Rooms

G. H. FELLERS



WALL PAPER, PAINTS, VARNISHES
WINDOW SHADES, CURTAIN
RODS AND GLASS



120 E. Washington St. Telephone 731



After the Dance
— VISIT —
JANE'S CAFE



LAIN DRUG COMPANY

THE REXALL STORE

— ● —
FOUNTAIN SERVICE
KODAKS
SHAEFFER PENS

Make This Your Headquarters
105 W. Washington Phone 7

COMPLIMENTS OF

“TOM”

OLYMPIA DELUXE

Ask For Pangburn's, Johnson's and Norris Chocolates

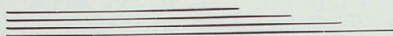
East Side Square

“Where Friends Meet”

Phone 154

**BETTER
LIGHT**

**BETTER
SIGHT**



Keener enjoyment in the things you see . . .
Hours of worthwhile enjoyment in reading.
Rich appreciation of all that's beautiful . . .
—All these can be carelessly discarded, if
you let EYE-STRAIN steal one of your
most precious possessions — YOUR EYE
SIGHT !

Make your home — your room or your
office — cheerful and attractive. Guard
the eye sight of others as well as yourself.
Use I.E.S. Better Light, Better Sight re-
flector type Lamps.

You are welcome to try one or more Better
Light - Better Sight Lamps free, at any
time — Just telephone 234.

MISSOURI POWER & LIGHT CO.

ELECTRICITY IS CHEAP IN KIRKSVILLE — ENJOY BETTER LIGHT

... FOR THE BEST IN ...
... COLLEGE
FOOTWEAR ...

The Florsheim Shoe

MYERS BROS.

J. D. BONDURANT'S SONS

Palace Bakery

<||||>

BREAD — MILK — POP

ICE CREAM

Sold by Most Dealers

<||||>

113-115 E. McPherson Phones 1700-1701

THE NATIONAL BANK OF KIRKSVILLE

NORTHWEST CORNER OF SQUARE

MEMBER OF FEDERAL RESERVE SYSTEM

Warner Mills, President

Roy Omer, Cashier

We Cordially Invite You to Avail Yourselves of Our Services

**SNEED ELECTRICAL
COMPANY**

<□>

Phone 660 206 N. Franklin St.
Kirksville, Missouri

<□>

**ELECTRICAL SALES
AND SERVICE**

J. C. PENNEY CO.

FOR
QUALITY AND STYLE
AT LOWEST PRICES

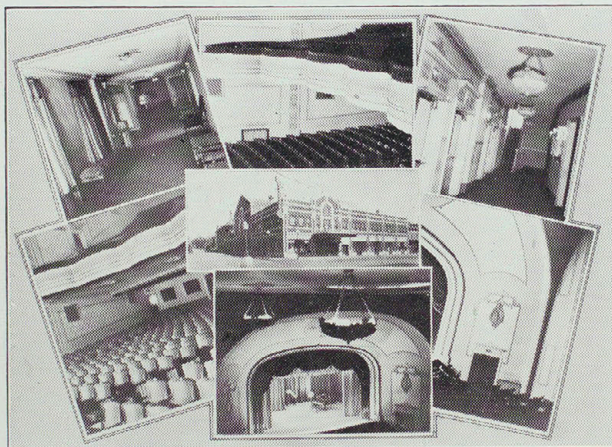
<□>

Northeast Corner of Square

SO LONG SENIORS . . .

Don't Forget All the Good Times That You
Have Had at the

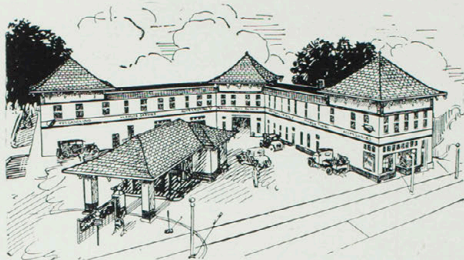
**FOX KENNEDY
THEATRE**



And You Under-Grads Don't Forget That There Are
Many Good Times Ahead For You at the

FOX KENNEDY THEATRE

Where You See All the Big Pictures First



BLUE CROSS
SERVICE STATION

GEO. GARDNER, Manager



SKELLY OIL PRODUCTS



WASHING AND GREASING
OUR SPECIALTY

**If you want a thorough, guaranteed grease
job — try our Grease Master Service**



CORNER FRANKLIN AND JEFFERSON
PHONE 300

• KIRKSVILLE BUYS ITS FOOD AT •
Mackie & Williams • **Factory Grocery**

215 W. HARRISON

801 W. MICHIGAN

— STOP AND SHOP —

NORMAL AND FRANKLIN

A visit to any of these modern food markets will
convince you that we sell good food for less

OWL DRUG STORE

D. I. — STEPHENSON & BEATY — Bob

- Visit our

LUNCHEONETTE

For the Best of

FOOD

- AT LOWEST PRICES

Experienced

Waitresses and Fountaineers
To Serve You

WALGREEN SYSTEM
DRUGS

∴

Elizabeth Arden Products

∴

WHITMAN'S CHOCOLATES
AND CANDIES

MAGAZINES —●— CIGARS
SUNDRIES

— "MEET ME AT THE OWL" —

PATRONIZE THE
FAMILY THEATRE

• • •

ALWAYS GOOD SHOWS

• • •

Reasonable Rates

THE
GRAPHIC PRINTING CO.

"The College Printers"



School and Fraternity Printing



Phone 555

•

114 So. Main

WE'RE
CELEBRATING
THE
**TEN
MILLIONTH
PHILCO**

**Extra Values |
Extra Easy Terms |
Extra Trade-in
Allowances!**

Here's an event never before approached in the history of radio . . . and it's the buying opportunity of all time! Now you can enjoy radio at its best — with a new 1938 Double-X Philco, with Automatic Tuning on an *Inclined Control Panel*. Here's complete tuning ease and grace, whether you're standing or sitting. A glance . . . a flick of your fingers . . . and there's your station . . . tuned instantly, automatically, *perfectly!*

Come in . . . see our complete line of 1938 Double-X Philcos . . . and take advantage of our Double-X extra easy terms!



**NO SQUAT
NO STOOP
NO SQUINT**



PHILCO 116XX

Just arrived . . . an exact replica of the Ten Millionth Philco! *Inclined Control Panel*, Automatic Tuning, Magnetic Tuning, High-Fidelity Audio System, Acoustic Clarifiers, Inclined Sounding Board, Philco Foreign Tuning System. Radio's finest for as little as . . .

\$10 down

And About \$1 A Week

AUREL R. BEETS

AUTHORIZED

PHILCO SALES & SERVICE

208 N. FRANKLIN

PHONE 260

