

NORTHEAST

Today

Northeast Missouri State University

Vol. 9 No. 5

September 25, 1989

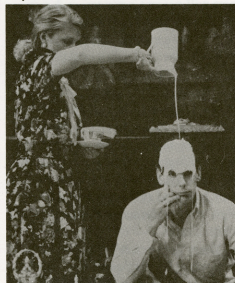
Lyceum To Present Absent Friends

The Lyceum Series will present the foot-in-mouth comedy "Absent Friends" featuring the Missouri Repertory Theatre at 8 p.m., Sept. 26, in Baldwin Auditorium. Free tickets for students, faculty and staff (one ticket per University ID) are available in the Student Activities Board Office, SUB. Financial assistance for this performance has been provided by the Missouri Arts Council, a state agency. The use of cameras during the performance will be prohibited.

"Absent Friends" is one of 35 full-length plays written by British playwright Alan Ayckbourn. Many American critics compare Ayckbourn to Neil Simon. Five of his plays have run in London's Westend theaters at the same time. Besides "Absent Friends," American audiences have taken a special liking to "How the Other Half Loves," "The Norman Conquests," "Bedroom Farce," "Absurd Person Singular" and "Woman in Mind."

"Absent Friends" is about two married couples, a woman whose husband is always sick and absent, and Colin, the man whose fiancée has drowned. To

help Colin over his presumed grief, the whole crowd gathers for the first time in years.



By the time Colin arrives it is clear the five others are an odd mix of quirks and neuroses with little in common to bond their friendships or their marriages. They fail at cheerfulness, where Colin succeeds. The paradox creates hilariously awkward situations.

Ayckbourn began his theatrical career as an actor and for the last 20 years has managed a small theater in Scarborough, England. His comedies are about English suburbia: marriage, marital problems, divorce and relationships between the formerly married. They are slightly sad tales which evoke humor through their visions of human foibles.

Ayckbourn told *Time* magazine that suburban marriage is "... a rich source of comedy. Everything that is most horrifying and wonderful happens in marriage."

The phrase "absent friends" is a standard British drinking toast. Literally, it could refer to the unfortunate deceased fiancée, or to the unfortunate ill and absent husband. However, even the friends that are seen in the play could be described as absent in some way.

"Absent Friends" exemplifies the Ayckbourn theory. Despite Colin's lost love, he remains the happiest of the friends, because of his fond memories of his fiancée. The others are locked into dull and distrusting marriages, and their lives are a misery.

Sororities Sweep National Awards

All four Panhellenic sororities at Northeast received national awards during the 1988-89 academic year.

Alpha Sigma Alpha member Trish Cope was recognized as the outstanding woman in the nation out of the organization's 60 chapters. She received the Elizabeth Bird Small Award. Cope, a 1989 NMSU alumna, is currently a freshman at the University of Wisconsin-Madison. In addition to being a member and past president of Alpha Sigma Alpha, Cope was a member of the women's varsity tennis team, the Pre-Law

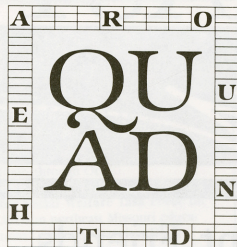
Club, the Order of Omega, Pi Sigma Alpha, Alpha Phi Sigma and Who's Who Among Students in American Universities and Colleges.

Sigma Sigma Sigma member Jeanne White was also recognized as the outstanding woman in the nation by her sorority. She was presented the Mabel Lee Walton Leadership Award. There are 78 Sigma Sigma Sigma chapters nationwide. White is a senior business administration major. She is currently serving as assistant Panhellenic adviser and as special events coordinator for the Stu-

dent Activities Board. She is past president of both SAB and Sigma Sigma Sigma.

Delta Zeta sorority was awarded the Council Award, which designates the top chapter of the 166 chapters in the nation. Delta Zeta also received the Crest Award for ranking in the top 10 percent of Delta Zeta chapters nationally.

Nigma Kappa received the National Council trophy for most improved chapter (on a campus of one to six sororities). There are 110 Sigma Kappa chapters nationwide.



Graduate and Professional School Day

Representatives from the following schools will be on campus Oct. 10 for Graduate and Professional School Day. The representatives will be available to meet with students from 10 a.m.-3:30 p.m., in the Student Union Building. For more information, contact the Graduate Office, A/H 203, at 785-4109.

Avila College
 College of Podiatric Medicine & Surgery
 Creighton University
 Drake University
 Drake University Law School
 Emporia State University
 Illinois State University (College of Arts & Sciences)
 Kansas State University (business & graduate school)
 Kirksville College of Osteopathic Medicine
 Loyola University
 Northeast Missouri State University
 Oklahoma State University
 Sangamon State University
 Southern Illinois University-Carbondale
 Southern Illinois University-Edwardsville
 University of Iowa (MBA program)
 University of Iowa (clinical laboratory science program)
 University of Missouri-Columbia
 University of Missouri-Kansas City School of Law
 University of Missouri-St. Louis School of Optometry
 University of Texas (medical branch)

Herald Trumpets to Present Concert



The United States Army Herald Trumpets will present a concert at 3 p.m., Oct. 8, in Baldwin Auditorium. The concert is free and open to the public.

Under the leadership of Capt. Thomas H. Palmatier, an NMSU alumnus, the Herald Trumpets are known as the most spectacular unit of the U.S. Army Band. Formed in 1959, their first official performance was welcoming Queen Elizabeth to the opening of the St. Lawrence Seaway. Since that day, they have had an illustrious array of high level performances throughout the United States.

There are currently 14 band members who play various sizes of herald trumpets. Palmatier is an associate director of the U.S. Army Band stationed at Fort Meyer, Va. He received his master's degree from NMSU in 1977 after serving as a graduate assistant in the Division of Fine Arts for two years.

The ensemble was featured on the White House Christmas television program last December. In January, they participated in President Bush's inauguration ceremonies. They perform weekly White House ceremonial duties.

Outside of Washington, D.C., the Herald Trumpets traveled with the president to Los Angeles to honor the Apollo 11 astronauts; to San Francisco for the arrival of the Emperor of Japan; and to Honolulu to greet the Prime Minister of Japan. They appeared at the opening ceremonies of the Winter Olympic Games at Lake Placid and the Summer Olympic Games in Los Angeles. In July 1986, the band participated in the relighting of the Statue of Liberty in New York, where they were viewed and heard worldwide. More recently, they appeared with Bob Hope in a charity concert for former Pres. Gerald Ford in Vail, Colo.

Delta Sigma Pi Named Outstanding Chapter in Nation

The Iota Nu chapter of Delta Sigma Pi national business fraternity received the Outstanding Chapter in the Nation award at a ceremony during the Grand Chapter Congress in St. Louis, Aug. 15. More than 169 chapters competed for the award nationwide.

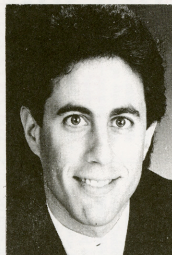
Fifty-two members of Iota Nu attended the weeklong chapter congress. The chapter also received the National Outstanding Community Service award for overall community service.

Sara Beth Fouch, business academic adviser, received the Chapter Adviser of the Year Award for the Midwestern Region of Delta Sigma Pi. Fouch has been adviser of Iota Nu for the past two years.

In addition, Karen Barkey, district director of Delta Sigma Pi in St. Louis and an NMSU alumna, received the national award for District Director of the Year.

Delta Sigma Pi currently has 75 members on campus.

Jerry Seinfeld Highlights 50th Anniversary Homecoming



Comedian Jerry Seinfeld, whom David Letterman says is "one of the best stand-up comedians working today," will perform at 8 p.m., Oct. 20, in Baldwin Auditorium.

One of the few comedians to appear frequently on "The Tonight Show" and "Late Night With David Letterman," Seinfeld is a performer in great demand. He has also appeared on numerous variety shows, HBO and Showtime comedy specials and has made two prime-time appearances on "Tonight Show" anniversary specials.

Seinfeld's popularity may also be due to the fact that his material is acceptable to all audiences.

Tickets for Seinfeld's performance will be available soon in the SAB Office, SUB, and the Alumni Office, A/H 101.

Grants Available for Humanities Research

The National Endowment for the Humanities provides an opportunity for students to conduct non-credit independent research and writing projects during the summer through the Younger Scholars Grant Program. The competitive program is open to high school students and non-senior undergraduate students.

The college grants involve nine weeks of full-time work by the student on a specific humanities project culminating in a research paper and final nar-

ative report. Projects require a project adviser with knowledge and qualifications in the appropriate discipline who will work closely with the student.

College students may apply for \$2,200 with \$400 allotted to the adviser. The deadline for applications is Nov. 1.

For more information and application materials, contact Peter Saltztein, academic planning services counselor, A/H 102, or call 785-4136.

Business Placement Center

25 Monday

Interview sign-up begins for **Target Stores**, Business Placement Center, Violette Hall 112
6:30 p.m.—**FDIC** preview session, Violette Hall 171 (north)

26 Tuesday

FDIC interviews, Business Placement Center, Violette Hall 112
Interview sign-up begins for **Moore Business Forms & Systems and Davis Moore Inc.**, Business Placement Center, Violette Hall 112
8 p.m.—**Peat, Marwick, Main & Co.** preview session, Days Inn

27 Wednesday

Peat, Marwick, Main & Co. interviews, Business Placement Center, Violette Hall 112
Interview sign-up begins for **Kmart Apparel Corp.**, Business Placement Center, Violette Hall 112

28 Thursday

Kmart Footwear interviews, Business Placement Center, Violette Hall 112
Deloitte & Touche preview session (for time and location, contact the Business Placement Center)
Interview sign-up begins for **Electronic Boutique** and **McGladrey & Pullin**, Business Placement Center, Violette Hall 112

29 Friday

Deloitte & Touche interviews, Business Placement Center, Violette Hall 112
Interview sign-up begins for **Hallmark Cards Inc.** and **Hibbard Brown & Company Inc.**, Business Placement Center, Violette Hall 112
Resumes will be accepted for screening for **Electronic Data Systems**, Business Placement Center, Violette Hall 112

Up With People Comes To Northeast

Up With People, a contemporary musical show featuring song and dance performances by young men and women from around the world, will appear in Baldwin Auditorium at 7:30 p.m., Oct. 2. The show focuses on building cultural understanding among people of all nations.

The Up With People cast includes more than 135 college age students from an average of 20 countries presenting popular and traditional songs, dances and costumes from various parts of the world.

Tickets are available at the Up With People Office in McKinney Center, the Student Activities Office, Edna Campbell Book Store and Rider Drug, Co. Tickets cost \$2 for students, \$3 for faculty and \$4 for community members.

The Up With People program will also hold interviews at Northeast for upcoming world tours. Interested young people between ages 17 and 25 may interview from 2-4 p.m., Oct. 2 at Career Planning, McKinney Center. All American and international students are welcome. For more information, contact Cecilia Luyau at the Up With People Office, McKinney Center, or call 785-4183.

Up With People is sponsored by the Student Activities Board, KTVO-TV and KTUF Radio.

Science Division Clears the Air

The faculty of the Division of Science recently adopted a resolution that prohibits smoking in Science Hall, the science portion of Barnett Hall and in and within 100 feet of buildings at the NMSU Agricultural Education and Research Center. Exceptions to the resolution are private staff offices and residences with the doors closed.

The resolution cited health hazards of second hand smoke as well as the danger of smoking in and near laboratories where flammable materials are used as two of the reasons for its adoption.

The Division plans to purchase and post "No Smoking" signs. Safety and Security will assist the Division in enforcing the policy.

O C T O B E R

1 SUNDAY

- 3:30 p.m.—**Worship in The Black Tradition** church service, United Methodist Church

2 MONDAY

- **Ernst & Young preview session;** contact the Business Placement Center, Violette Hall 112, for time and location.
- 7 p.m.—**CROP walk** coordinating and informational meeting, Community Federal Bank meeting room
- 7:30 p.m.—**Up With People**, Baldwin Auditorium.
- 8 p.m.—**"The Boys Next Door,"** a University Players production, Baldwin Hall Little Theatre; through Oct. 6.

3 TUESDAY

- **Bulldog volleyball** vs. Quincy College, Pershing Arena
- **Ernst & Young interviews**, Business Placement Center, Violette Hall 112
- 8:30 a.m.-4 p.m.—**Student registration** begins for 20th annual CROP Walk, A/H Lobby
- 7 p.m.—**Summer 1990 trip** to France informational meeting, A/H 302
- **Fencing Club** organizational meeting, Dobson Hall main lounge

4 WEDNESDAY

- **Interview sign-up** begins for Union Pacific Railroad, Business Placement Center, Violette Hall 112. Tours will be held each week at this time.
- 4 p.m.—**Business Placement Center** tour, Violette Hall 112. Tours will be held each week at this time.
- 4:30 p.m.—**The University Forum** presents "Did Freshman Week (finally) Work?", Missouri South second floor quiet lounge
- 6-7 p.m.—**"The Research Paper: Summarizing, Paraphrasing, and Quoting: Do You Know The Difference?"** workshop, Writing Center, A/H 303; also 6-7 p.m., Oct. 11.
- 6:30-7:30 p.m.—**"ESL Workshop: A Article? An Article? The Article,"** Writing Center, A/H 303; also 3:30-

- ness Placement Center, Violette Hall 112
- 8:30-4:30 p.m.—**World Peace Group** buttons and shirt sale, A/H lobby
- 3:30 p.m.—**Womens soccer** vs. University of Missouri-Rolla, soccer field
- 3:30-4:30 p.m.—**"ESL Workshop: Getting Tense About Verbs,"** Writing Center, A/H 303; also 3:30-4:30 p.m., Oct. 25.
- 6:30 p.m.—**"Financing Study Abroad . . . I want to go, but how can I pay for it?,"** a presentation by Sue Neely, assistant to the director of financial aids, and Judy Mullins, controller, Kirk Building 304.
- 6:30-7:30 p.m.—**"Introductions: How to Do Howdy Dos!"** workshop, Writing Center, A/H 303; also 3:30-4:30 p.m., Oct. 18.
- 7:30 p.m.—**World Peace Group** business meeting, Violette Hall 228
- **CROP Walk** informational meeting for organization leaders, Lutheran Student House
- 8 p.m.—**Performance** by Leigh Howard Stevens, classical marimbist, Baldwin Auditorium

11 WEDNESDAY

- **Interview sign-up** begins for McDonnell-Douglas; resumes for Coopers & Lybrand due for pre-screening; Kmart Apparel Corp. interviews, Business Placement Center, Violette Hall 112
- 3-4 p.m.—**"Building the Best Resumes,"** a Career Planning and Teacher Placements workshop for education majors, SUB 6
- 4 p.m.—**Mens soccer** vs. Missouri Valley, soccer field
- 4:30 p.m.—**The University Forum** presents "Is our present Greek system compatible with our new mission?", Missouri South second floor quiet lounge
- 8 p.m.—**"The Old Order Amish"** a presentation by Marlow Ediger, professor of education, Violette Hall 290

12 THURSDAY

- **Electronic Boutique** interviews and McGladrey & Pullen interviews, Business Placement Center, Violette Hall 112

- **Society** open meeting, Science Hall 116
- 8 p.m.—**Faculty piano recital** by David McKamie, Baldwin Auditorium

17 TUESDAY

- **Accounting interview sign-up** begins for Rolscreen and for Wallace Computer Services, Business Placement Center, Violette Hall 112
- 8:30 a.m. and 1:30 p.m.—**College Level Exam Program (CLEP), A/H 103**
- **Noon-1 p.m.—50th Anniversary Homecoming Fashion Show**, sponsored by Gamma Phi Delta social sorority, Georgian Room. The show will feature clothing styles from 1939 through 1989. Admission is free.
- 3:30-4:30 p.m.—**"Conclusions: Time to Quit While You're Ahead!"** workshop, Writing Center, A/H 303; also 6-7 p.m., Oct. 25.

18 WEDNESDAY

- **Interview sign-up** begins for Rolscreen, Business Placement Center, Violette Hall 112
- **Union Pacific Railroad** preview session; contact the Business Placement Center for time and location.
- **Alumni Art Show**, University Gallery, Baldwin Hall 218; through Nov. 9
- 8:30 a.m. and 1:30 p.m.—**College Level Exam Program (CLEP), A/H 103**
- 4:30 p.m.—**The University Forum** presents "What would happen if no students were required to live on campus?", Missouri South second floor quiet lounge
- 6-7 p.m.—**"ESL Workshop: Don't Be Behind the Second Ball; Hit the Pot Jack and Score With Idioms!,"** Writing Center, A/H 303; also 6-7 p.m., Oct. 24.
- 7 p.m.—**"Is it neurotic to pursue happiness?,"** a liberal arts and sciences lecture by Robert Cowan, professor of psychology, SUB Alumni Room

19 THURSDAY

- **Coopers & Lybrand** interviews; Interview sign-up begins for Missouri Probation & Parole and Mutual of Omaha, Business Placement Center, Violette Hall

- Insurance; Resumes will be accepted for Edward D. Jones & Co. for pre-screening, Business Placement Center, Violette Hall 112

- 7-7:45 p.m.—**Readers' Round Table performance hour**, Violette Hall 290
- 8 p.m.—**Amabile Piano Quartet**, presented by the Lyceum Series, Baldwin Auditorium

24 TUESDAY

- **Stepan Company interviews;** Interview sign-up begins for Walmart, Business Placement Center, Violette Hall 112
- 7:30 p.m.—**World Peace Group** educational meeting on South Africa and Apartheid, Violette Hall 228

25 WEDNESDAY

- **McDonnell-Douglas interviews;** interview sign-up begins for Moorman Manufacturing Co., Business Placement Center, Violette Hall 112
- 2:30 p.m.—**Womens soccer** vs. Southern Illinois University-Edwardsville, soccer field
- 3-4 p.m.—**"The Job Search: More Than Just The Want Ads,"** a Career Planning and Teacher Placements workshop for education majors, SUB 6
- 4:30 p.m.—**The University Forum** presents "What is the value of racial diversity in university life?", Missouri South second floor quiet lounge

26 THURSDAY

- 7-10 p.m.—**Lindbergh's Haunted House**, Dobson Hall third floor (north); also 9 p.m.-midnight, Oct. 27. Cost is 50 cents.

27 FRIDAY

- **Archer Daniels Midland Co.** interviews, IBP Inc. interviews and Internal Revenue Service interviews; interview sign-up begins for State Farm Insurance, Business Placement Center, Violette Hall 112
- 7 p.m.—**SAB movie "Psycho,"** Baldwin Auditorium. Admission is \$1.50 or free with an SAB sticker.

4:30 p.m.—Oct. 11.

• **8 p.m.—Solo piano recital** by William Blaine, Alvin M. Owsley artist-in-residence, Baldwin Auditorium

5 THURSDAY

- **Resumes** will be accepted for Coopers & Lybrand; resumes for Electronic Data Systems are due for pre-screening; Pars Service interviews, Business Placement Center, Violette Hall 112
- **5 p.m.—Spanish Club** meeting, Ophelia Parrish 118. The Spanish Club meets every other Thursday at this time.

6 FRIDAY

• **Vacation Day** (classes dismissed)

7 SATURDAY

- **9:30 a.m.-1 p.m.—Agriculture Day**, Agricultural Science Research and Education Center (formerly the University Farm), Boundary and La Harpe streets.
- **3:30 p.m.—Womens soccer** vs. St. Joseph's College, soccer field
- **7 p.m.—Bulldog football** vs. Central State University, Stokes Stadium

8 SUNDAY

- **9 a.m.—Kirksville Invitational Bicycle Autumn Classic** check-in, Grim-Smith Hospital parking lot. Departure time is 10 a.m.
- **3 p.m.—U.S. Army Herald Trumpets** concert and demonstration, Baldwin Auditorium
- **5:30 p.m.—FOCUS** campus political party open meeting, SUB 6. FOCUS meets every other Sunday at this time.

9 MONDAY

- **Alcohol Awareness Week**
- **Last day** to drop full-semester courses without code
- **Target Stores interviews**, Business Placement Center, Violette Hall 112
- **2 p.m.—Major Field Achievement Tests:** Science and Fine Arts (MFAT), SUB
- **8 p.m.—"La Boheme,"** by the Lyric Opera of Kansas City, a Lyceum Series presentation, Baldwin Auditorium

10 TUESDAY

- **Interview sign-up** for Stepan Company; Davis Moore interviews; and Moore Business Forms & Systems interviews, Busi-

ness Placement Center. Students interested in actual science will meet to get acquainted and discuss spring registration, Ryle Hall private dining room

13 FRIDAY

- **Interview sign-up** begins for Archer Daniels Midland Co., Internal Revenue Service and IBP Inc.; Hallmark Cards interviews and Hibbard Brown & Co. interviews, Business Placement Center, Violette Hall 112
- **7 and 9:15 p.m.—SAB movie** "Rainman," Baldwin Auditorium. Admission is \$1.50 or free with an SAB sticker.

14 SATURDAY

- **8 a.m.—Graduate Record Exam (GRE),** SUB
- **10 a.m.-6 p.m.—SAB Mud Volleyball**, south of Stokes Stadium at the tug-of-war pits; also Oct. 15 from 2-6 p.m.
- **2 p.m.—Mens soccer** vs. Southeast Missouri State University, soccer field
- **6 p.m.—Hayride**, meet at the Baptist Student Union. Cost is \$2.
- **7 p.m.—SAB movie** "The Graduate," Baldwin Auditorium. Admission is \$1.50 or free with an SAB sticker.
- **9:15 p.m.—SAB movie** "Tootsie," Baldwin Auditorium. Admission is \$1.50 or free with an SAB sticker.

15 SUNDAY

- **Electronic Data Systems** preview session; contact the Business Placement Center, Violette Hall 112, for time and location.
- **2 p.m.—Womens soccer** vs. Benedictine College, soccer field
- **4:30 p.m.—"Perspectives on Nicaragua,"** by David Belt of the Marvin Park United Methodist Church, St. Louis, SUB Activities Room. A "poverty meal" will be served. Cost is \$1. Advance registration is required by Oct. 11 at the Wesley House, the Lutheran Student House or the Newman Center.

16 MONDAY

- **Electronic Data Systems** interviews, Business Placement Center, Violette Hall 112
- **10 a.m. and 1:30 p.m.—Miller Analogies Test (MAT),** A/H 103
- **7 p.m.—Chariton Valley Audubon**

112
• **Union Pacific Railroad testing:** contact the Business Placement Center for time and location.

- **7 p.m.—SAB movie** "Gone with the Wind," Baldwin Auditorium. Admission is \$1.50 or free with an SAB sticker.

20 FRIDAY

- **Midterm**
- **Last day** of first-half block courses
- **8 a.m.—General Education Development Test (GED),** A/H 103
- **5 p.m.—Homecoming Pep Rally** and Coronation, Baldwin Auditorium
- **8 p.m.—The Jerry Seinfeld Show** with the Franklin Street Singers, Baldwin Auditorium

21 SATURDAY

- **8 a.m.—Real Estate Licensing Examination (RELE),** A/H 103
- **8:30 a.m.—The fourth annual Bulldog 5K Run,** Stokes Stadium
—**Graduate Management Admissions Test (GMAT),** location to be announced
- **9 a.m.—Coffee and Donuts,** SUB Georgian Room
—**Homecoming Parade,** Franklin Street
- **11 a.m.—Honored Class Brunches** 1939, 1949, 1959, 1969, 1979
- **11 a.m.-1:30 p.m.—Chillfest,** Red Barn Park. All-you-can-eat chili and bratwurst will be served. Cost is \$4.
- **1 p.m.—Pre-game Activities,** Stokes Stadium
- **2 p.m.—Bulldog Homecoming football** vs. Southeast Missouri State University, Stokes Stadium
- **4-6 p.m.—Open house** for alumni, Wesley House
- **5 p.m.—Alumni Reception,** Days Inn
- **8 p.m.—The Franklin Street Singers** Concert, Baldwin Auditorium
—**Homecoming Dance,** Rieger Armory

22 SUNDAY

- **9 a.m.—The second annual Bulldog Classic Golf Tournament,** Kirksville Country Club

23 MONDAY

- **First day** of second-half block courses
- **MIAA Cross Country Championship Meet**
- **Interview sign-up** begins for State Farm

7:15 p.m.—**SAB movie** "Psycho," Baldwin Auditorium. Admission is \$1.50 or free with an SAB sticker.

28 SATURDAY

- **7-8 a.m.—20th Annual CROP Walk** for Hunger registration, Faith Lutheran Church. The walk begins at 8 a.m.
- **8:15 a.m.—ACT Assessment,** contact Testing Services, A/H 103, for location information.
- **11:30 a.m.—Womens soccer** vs. the University of Wisconsin-Milwaukee, soccer field
- **2 p.m.—Mens soccer** vs. Missouri Southern State College, soccer field
- **8 p.m.—"Pelle the Conqueror,"** an SAB Films/Four Series film, Baldwin Auditorium

29 SUNDAY

- **4:30 p.m.—United Campus Ministry Progressive Dinner,** Wesley House. Cost is \$1.50.

30 MONDAY

- **1:30 p.m.—Sophomore Test Week:** CAAP, SUB
- **7:30 p.m.—Rolscreen** preview session, Violette Hall 171 (north)

31 TUESDAY

- **Rolscreen accounting** interviews and Wallace Computer Service interviews; Resumes due for pre-screening for Edward D. Jones & Co., Business Placement Center, Violette Hall 112
- **8 p.m.—United States Navy Band Commodores,** presented by the Lyceum Series, Baldwin Auditorium
- **8 p.m.—midnight-United Campus Ministry Halloween dance** and costume party, Mary Immaculate Catholic School Gym

Northeast Notables

Jim Barnes, professor of comparative literature, has been awarded a Rockefeller Foundation Fellowship that will allow him to spend a month in residence at the Rockefeller Study Center in Bellagio, Italy, next spring. While in Italy, Barnes will be completing a new book of poetry titled *The Saudust War*, and beginning a translation of a book by West German poet Dagmar Nick. In November, Barnes will attend the first French-American Conference on Poetry in Grenoble, France. Barnes has a poem titled "Mali Chito" appearing in the current issue of *Poetry Wales*, published in Wales, U.K., and three poems "For the Suicide," "Crossing the Kiamichis Again" and "The War Over Holson Valley," appearing in the summer issue of *The Laurel Review*.

Jane Bartling, instructor of health and exercise science, had an essay titled "Forty Years in the Gym" published in the August issue of *Quest*, a journal of the National Association for Physical Education in Higher Education. The essay was written as a tribute to the successful teaching career of Kay Patterson, a 1948 NMSU alumna, of Hannibal High School.

David Cicotello, assistant professor of English, has had articles reprinted in *Explorations in the Teaching of English* by Stephen Tchudi (Harper & Row, 1988) and in *Contemporary Literary Criticism*, Vol. 53 (Gale Research Company, 1989).

Keith Doubt, assistant professor of sociology, recently attended the American Sociological Association meeting in San Francisco and presented a paper on Hans-Georg Gadamer's hermeneutics titled "The Place of Tact in Theoretical Discourse."

Charles Frost, associate professor of justice systems, taught a course in strategic intelligence analysis for the Royal

Canadian Mounted Police in Ottawa this summer. It was the first such course ever offered to government personnel in Canada.

Sara Beth Fouch, business academic adviser, has received the Chapter Adviser of the Year award for the mid-western region of Delta Sigma Pi business fraternity. Fouch has served as adviser to Northeast's Iota Nu chapter for the past two years.

James Guffey, assistant professor of mathematics, has co-authored a paper with F. T. Wright of the University of Missouri-Columbia titled "Testing for a trend in exponential means: a two-moment approximation to the null distribution of the likelihood ratio statistic." The paper was published in *The Canadian Journal of Statistics*, No. 1, 1989.

David Lesczynski, associate professor of agricultural science, presented a paper titled "Positioning Agricultural Curricula for the 21st Century" at a curriculum symposium at the University of Guelph, Ontario, July 21.

Miles Lovelace, professor of education, presented a paper titled "Opening the American Mind: Internationalism and Diversity in an Experimental Residential College" at a national conference on Opening the American Mind in Philadelphia, Sept 20-22. Lovelace will also serve on a panel addressing the theme "Promoting Campus Multiculturalism: A View of Reform at Selected Institutions of Higher Education." The conference is sponsored by Rutgers University.

Lovelace, along with **Todd Flanders**, assistant to the college professor, Missouri South; **Elsie Gaber**, academic planning services counselor, Missouri South; and **Mike Sanders**, Missouri South peer adviser, will give a presentation on "Residential College Faculty Associates: Increasing Faculty Contacts

with Students" at the Missouri College Personnel Association annual conference in Columbia, Mo.

Betty McLane-Iles, associate professor of French, recently published an article titled "Les Visions de Simone Machard (de Bertolt Brecht) et Simone Weil" in *Cahiers Simone Weil* in the second edition of the book *Uprootal and Integration in the Writings of Simone Weil* is forthcoming.

David Partenheimer, assistant professor of English, presented his paper, "Teaching for Thought and Action" at the National Language Arts Educators Conference in Kansas City, Sept. 16.

Maren Partenheimer, assistant professor of German, presented a paper titled "Beyond Drills and Small Talk: Critical Thinking and Cultural Criticism in Elementary German Instruction" at the Ninth International German Teachers Conference in Vienna, Austria in August.

Julie Samson, junior nursing major, was selected "Up-Close" reporter for *Imprint* magazine. Samson will be writing a column about prominent nursing students across the country.

Roy Tanner, associate professor of Spanish, presented a paper titled "The marginal annotations of Ricardo Palma in the books of the National Library in Lima, Peru" at the conference of the International Association of Hispanists in Barcelona, Spain, Aug. 25.

Northeast's chapter of the **Society of Professional Journalists** was recently awarded the Region VII Chapter of the Year award for the second consecutive year. Other chapters in Region VII include the University of Missouri-Columbia and the University of Iowa.

Notes

The Missouri Association for Social Welfare Task Force on AIDS in Northeast Missouri is holding a public hearing Sept. 25 at the Travelers Hotel Ballroom. The purpose of the hearing is to gather information from people whose lives have been affected by AIDS. The proceedings will be used in the task force's year-end report. The report will contain recommendations for changes in law, policy, practice and resources. Students, faculty and staff are encouraged to testify either in person or in writing. For more information, contact Jeff Morasco at Grim Smith Hospital, 665-7241.

Individual yearbook pictures will be taken from 8 a.m.-5 p.m., Sept. 25-29 on the SUB third floor. No appointment is necessary.

Students to Assist Recruitment (STAR) applications are available in the Admissions Office, A/H 205. The school seeks to personalize the admissions process by putting current Northeast students in communication with prospective students. For more information, contact Karen Klingemann, admissions counselor, at 785-4114.

Positions are still open for one junior representative and one graduate representative to Student Senate. Pick up applications at the information counter, SUB main floor. The deadline for applications is Sept. 29.

Reserved seating tickets for next week's production of "The Boys Next Door" will be available at the SAB Office, SUB, Sept. 28 through Oct. 5. The University Players production will run from Oct. 2-6.

The Writing Center is sponsoring an Open Forum for Creative Writers every Wednesday from 7-8 p.m. Susan Hill, senior English major, will moderate the forum. No registration is necessary; all interested writers are welcome.

Student representative to the Board of Governors applications will be avail-

able Oct. 9 in the Student Activities Office, SUB. The term begins Jan. 1, 1990. Requirements include a 2.5 GPA, U.S. citizenship, Missouri residency and an outstanding record of academics and extracurricular activities. Applications are due at 5 p.m., Nov. 1.

Student subjects are being sought for hypnosis research to study the effects of hypnosis on stress levels and grade point average improvement. Serious upperclassmen willing to spend one hour per week should contact Sal Costa at 785-4646, Paul at 785-5231 or Rob at 785-5584.

Who's Who qualifying forms are available now in the Dean of the Colleges Office, A/H 204. Requirements include leadership qualities displayed through participation in academic and co-curricular activities, a minimum 2.75 GPA and graduation by August 1990. The deadline is Oct. 11.

Seniors interested in the MAE Graduate program must apply by Oct. 15, 1989. Application forms may be picked up in the Graduate Office, A/H 203, or the Education Division Office, Violette Hall 258.

Windfall, the campus literary magazine, is now accepting submissions of poetry, fiction, art and cover art for its fall issue. Guidelines are available in the Language and Literature Division Office, A/H 310. Deadline for submissions is Oct. 25. A \$40 Editors' Award will be awarded to the best submission in each category. For more information, contact Angela Clark at 785-5966.

The SAB Mud Volleyball Tournament will be held from 10 a.m.-6 p.m., Oct. 14 and from 2-6 p.m., Oct. 15 at the tug-of-war pits south of Stokes Stadium. Teams consist of eight people and entry fee is \$12 per team or \$8 if four or more team members have SAB stickers. For more information, call the SAB Office at 785-4189.

The German Stammtisch meets twice

weekly in the Ryle South private dining room. All German students are invited to attend. The group meets from 11:30 a.m.-1 p.m. on Tuesdays and from 6-7 p.m. on Wednesdays. For more information, contact Maren Partenhaimer, assistant professor of German, at 785-4274.

The Science Division will hold an Agriculture Day from 9:30 a.m.-1 p.m., Oct. 7 at the Agricultural Science Research and Education Center, Boundary and La Harpe streets. Activities will include a horse show, tours of the center, research presentations and educational activities. For more information, contact Duane Ford, assistant professor of agronomy, at 785-4280.

Students Together On Prevention (STOP) is looking for students interested in working against substance abuse in the Kirksville community. For more information, contact Darrell Smith at Kirksville Senior High School at 665-4631.

The Kirksville Invitational Bicycle Autumn Classic is Oct. 8. Check-in time is 9 a.m. in the Grim Smith Hospital parking lot. Departure is at 10 a.m. Cost is \$10 for individual or family entries. Grim Smith will also give away a 12-speed bicycle. Proceeds will benefit the American Diabetes Association. In case of rain, the event will be held Oct. 15.

The Career Planning and Teacher Placement Center is offering two workshops for students majoring in education. A "Building the Best Resumes" workshop will be held from 3-4 p.m., Oct. 11 in SUB 6. A workshop titled "The Job Search: More Than Just Want Ads" will be held from 3-4 p.m., Oct. 25 in SUB 6. No advance sign-up is required.

The Panhellenic Council is sponsoring free babysitting during all Lyceum Series events. The service will be available from 7-10 p.m. on Sept. 26 in Baldwin Hall 285.

This Week

25 MONDAY

- **Painting exhibition** of works by Sunna Breed, Baldwin Hall second floor; through Oct. 6.
- 9 a.m.-noon—**Missouri Association for Social Welfare Task Force on AIDS** in northeast Missouri educational program, Travelers Hotel Ballroom
- 1:30 p.m.—**COMP/CAAP Sophomore Test Week**, SUB; through Sept. 29.
- 1:30-5 p.m.—**Missouri Association for Social Welfare Task Force on AIDS** in northeast Missouri public hearing, Travelers Hotel Ballroom
- 5 p.m.—**University Faculty Club** meeting to ratify bylaws and articles of incorporation, Violette Hall 290. Faculty, graduate student teaching assistants, administration and staff are welcome. Bylaws and articles are posted in all division offices, the Dean of Instruction Office, A/H 203, and Pickler Memorial Library.
- Lambda Alpha Epsilon** honorary criminal justice society pizza party and movie, Pershing Building 231..
- 6 p.m.—**Chariton Valley Audubon Society** fall picnic and meeting, shelter house on the point, Thousand Hills State Park

26 TUESDAY

- 6 p.m.—**Katie Steele**, Missouri state representative, will speak to the American Marketing Association, Violette Hall 228.
- 7 p.m.—**"Le Crabe Tambour,"** a French film with English subtitles presented by Pi Delta Pi, A/H 302
- 7-10 p.m.—**Free babysitting service** during Lyceum Series presentation, sponsored by the Panhellenic Council, Baldwin Hall 285
- 7:30 p.m.—**World Peace Group** presents "U.S. Military in El Salvador," a lecture by Mark Haem, and a film about El Salvador, Violette Hall 228
- Alpha Sigma Gamma** service sorority informal rush, "Beach Party," SUB Alumni Room
- 8 p.m.—**"Absent Friends"** featuring the Missouri Repertory Theatre, pre-

sented by the Lyceum Series, Baldwin Auditorium

27 WEDNESDAY

- 3:30-4:30 p.m.—**"The Essay Exam: Writing Everything You Know In 20 Minutes or Less!"** workshop, Writing Center, A/H 303. Students may register for this workshop Sept. 25 in the Writing Center.
- 4 p.m.—**Business Placement Center tour**, Business Placement Center, Violette Hall 112
- 4:30 p.m.—**The University Forum presents** "What is pornography: When is a calendar not a calendar?", Missouri South College second floor quiet lounge
- 5 p.m.—**Phi Theta Kappa (alumni chapter)** honorary community/junior college fraternity organizational meeting, A/H 208
- 7 p.m.—**Baldwin Bicycle Club** open meeting, SUB Alumni Room
- Hypnosis seminar** presented by Sal Costa, Centennial Hall main lounge
- 7:30 p.m.—**Alpha Angels** social service organization interest party, SUB 2

28 THURSDAY

- 3:30-4:30 p.m.—**"The Essay Exam: Writing Everything You Know In 20 Minutes or Less!"** workshop, Writing Center, A/H 303. Students may register for this workshop Sept. 26 in the Writing Center.
- 6 p.m.—**International Association of Business Communicators** open meeting, Violette Hall 103
- 6:30 p.m.—**Society of Professional Journalists** informational meeting, Ophelia Parrish 118. Anyone with career plans in communication or journalism is encouraged to attend. SPJ meets every Thursday at this time.
- 7 p.m.—**Alpha Sigma Gamma** service sorority formal rush, SUB Alumni Room
- SAB presents NMSU Live**, Circle Drive. In case of rain, NMSU Live will be held in Kirk Gym.
- 7:30 p.m.—**National Organization for Women (NOW)** letter writing session, Baldwin Hall 285

- 9 p.m.—**World Peace Group** World War II memorial candlelight vigil, Kirk Memorial. The World Peace Group will be joined by members of local veteran organizations.

29 FRIDAY

- **Graduation applications** for undergraduates graduating in December are due in the Registrar's Office, A/H 104.
- **Last day** to drop first-half block courses with code
- **Last day** to receive 70 percent reduction in enrollment fees
- **Student Senate applications** for one junior representative and one graduate representative are due in the Student Senate Office, SUB
- 12:30 p.m.—**"Research trends in the Department of Biology at the University of Iowa,"** a biology seminar by George Cain of the Department of Biology at the University of Iowa, Science Hall 124. Cain will be available to talk to students about graduate school at 2:30 p.m. in Science Hall 115.
- 7 and 9-15 p.m.—**SAB movie** "Major League," Baldwin Auditorium. Admission is \$1.50 or free with an SAB sticker.
- 2 and 3-15 p.m.—**Buses leave** from the Baptist Student Union for the State Student Convention at Camp Windermere, Lake of the Ozarks; through Oct. 1. Cost is \$40. Contact the Baptist Student Union at 665-4841 for more information.

30 SATURDAY

- **President's Distinguished Scholar Day**
- 2 p.m.—**Mens soccer** vs. Rockhurst College, soccer field
- 8 p.m.—**"Beverly Hills Cop"** presented by Sigma Kappa social sorority, Baldwin Auditorium. Admission is \$1.
- 8 p.m.—**Midnight-Spanish Club Dance**, Kirk Gym

1 SUNDAY

- 3:30 p.m.—**Worship In The Black Tradition** church service, United Methodist Church, 300 E. Washington

Northeast Today is published weekly on Mondays. Deadline for entries is 5 p.m. the Wednesday preceding Monday's publication. Entries should be submitted on the *Northeast Today* forms available in the Public Relations Office, A/H 202. All activities listed in *Northeast Today* are open to the public.