

# NORTHEAST TODAY

▶ VOL. 15 NO. 8 ◀

Northeast Missouri State University

October 7, 1991

## Preussner Named Associate Vice President



who resigned last spring. Magruder said he is

Vice President for Academic Affairs Jack Magruder has announced the appointment of Alanna Preussner as Associate Vice President for Academic Affairs. Preussner, assistant professor of English and grants specialist, fills the position left vacant by Linda Seidel, who resigned last spring. Magruder said he is

confident the University will benefit from Preussner's service.

According to Dean of Advancement R. Eric Staley, a national search will begin soon for a director of grants and sponsored programs. Until then, Preussner will also continue working with faculty on proposals.

Preussner's duties will include those of Graduate Dean as well as coordination of advising activities, planning for grant activity and faculty development. Active learning, retention, review of the curriculum, and technology in education are some of the areas

that Preussner may work with in regard to faculty development.

Northeast's Graduate Office oversees nine programs: Master of Accountancy, Master of Arts in Communication Disorders, Master of Arts in Education, Master of Arts in Music, Master of Arts in English, Master of Arts in Mathematics, Master of Science (biology), Master of Arts in Counseling, Master of Arts in History. The University enrolls approximately 350 students in graduate programs annually.

Preussner said she plans learn as much as

*cont. pg. 2*

## Voter Registration Drive

A voter registration drive is being held on campus this fall. In order to vote on Nov. 5, one must be registered by Oct. 16. There will be tables from 11 a.m.-2 p.m., Oct. 10 and 16, in the SUB. To register, one must be an American citizen at least 18 years of age and be able to present a form of identification. Registration is also available 8:30 a.m.-4:30 p.m., Monday-Friday, at the County Clerk's Office in the County Courthouse.

Certified notaries are being sought to assist the Student Voter Registration committee with absentee voting. Notaries interested in helping should contact Teri Brickey at 785-5705.

Absentee ballot requests are now available at the Student Senate Information Center, SUB. The forms can be returned to the Center before Oct. 25.

## We've Got The Right One Baby, Uh-Huh!



Northeast has received one of ten grand prizes in the Pepsi-Cola home video contest. The video, shot last spring, won \$10,000 and will be part of a 30-second commercial compiled of segments from all 10 winning videos. The commercial was broadcast during a Ray Charles special on Oct. 6 on the FOX network

and will air during the weeks of Oct. 7 and 14 during prime time shows such as "America's Funniest People" and "The ABC Sunday Night Movie." Northeast's video was produced by Johnny Langley, assistant professor of communication, Chris Geisert, senior communication:

*cont. pg. 3*



### United Way Fundraising Kick-Off—

Louis Hershey, assistant professor of business administration and co-chairman of the campus United Way fundraising drive, speaks at the United Way kick-off breakfast on Oct. 3 in the Georgian Room. The United Way drive runs through the month of October. The University's fundraising goal is \$33,000. Melinda Wood, financial aid director, is also co-chair of the drive.

# Worth the Wait



Due to a delay in the delivery of kitchen equipment, the Food Court in the Student Union Building will open later than originally planned. The countdown to the opening day which hangs above the Food Court doors will continue to count down with negative numbers. According to Dennis Markeson, director of Professional Food Management, the Food Court should open sometime during Homecoming week if there are no complications.

Construction began in August and was interrupted for a week because of work that needed to be finished before classes began.

The Food Court, located in the former Snack Bar, will include several food choices. The Magnificent Mealery will serve soups and

fresh breads and provide a salad/pasta bar and fruit stand. The Sante Fe Express will feature a "grab and go" concept. Sandwiches, canned soda and juices and ice cream will also be available. Pastries, donuts, homemade breads and muffins will be served at W.W. Cinnamon's and Co. Slicers will offer delicatessen choices. Whole and slice pizza will be served at Pan D's Pizza. Kitchen Classics will offer traditional entrees and some Mexican food. Coop's will feature chicken and plate specials. "Fast food" such as hamburgers, fried and grilled sandwiches will be served at Patty's. Various beverages will be on tap at Quenchers.

A grand opening is being planned for later this fall. Read the *Northeast Today* for details.



**Blood Drive Winners** Five donors from the Sept. 10-12 Red Cross Blood Drive, sponsored by Cardinal Key and Blue Key honor organizations, were normally chosen to receive \$50 each. The money was donated by Grim-Smith Hospital. The drive surpassed its goal of 420 pints collecting 541 pints from 636 people.

Pictured are the winners (front row) Aaron Willis, Mike Roberts, Whitney Weddell, Kristen Kasper and Jim Thomas; (back row) Kevin Sprouse, Blue Key blood drive chair, Kaitie Quinn, Cardinal Key blood drive chair, and Royce Cook, campus blood drive coordinator.

The next blood drive on campus will be held Nov. 12-14, sponsored by the Physicians Club.

## Preussner cont.

she can about the graduate programs. She feels now is an exciting time to be working in the Graduate Office, "especially with MAE really beginning to take off."

"I'm looking to do whatever I can to help strengthen the graduate programs that are providing excellent liberal arts and sciences education for our students," Preussner said.

Before coming to Northeast in 1989, Preussner was director of programs for the Kansas Committee for the Humanities. From 1978-85, Preussner was at Yankton College (South Dakota) as assistant professor of English and Title III grant coordinator.

Preussner has worked with students, faculty and administrators through her positions at Northeast. She has taught British Literature Survey and Freshman Composition at Northeast and in 1990, was a finalist for the Educator of the Year award. She is excited about her new position because it will allow her to maintain some of the activities that she's already working on and to keep in touch with her colleagues.

"Being in an academic setting such as this one gives me a chance to work with all constituencies of the University," Preussner said.

In addition to receiving numerous honors and awards, Preussner has written several successful grant proposals. Recently, her proposal "Academic Advising at NMSU" received a \$201,000 grant from the Fund for the Improvement of Postsecondary Education (FIPSE) for the U.S. Department of Education. She will continue to direct that program.

In June, Preussner led a team of NMSU faculty members at the Asheville Institute on General Education at the University of North Carolina. Her team focused on the freshman seminar model, interdisciplinary core courses, faculty development and active learning. "The critical question we asked was what a college-educated person should be able to do as a result of general education," Preussner said.

Preussner received doctoral and master's degrees in English literature from the University of Colorado. She holds a bachelor's degree from Illinois Wesleyan University. She has participated in postdoctoral research in composition at Brown University and received training in values and critical inquiry, active learning, management, fundraising and program evaluation.

She is a member of the Modern Language Association, the National Council of Teachers of English, the National Academic Advising Association and the American Association of State Colleges and Universities/Office of Federal Programs.

Preussner, her husband Arnold Preussner, associate professor of English, and their daughter Amy reside in Kirksville.

## Introducing . . .

# Cheryl Grew-Gillen,

## Director of Campus Activities and Organization Center



Student Union  
Building  
708-4222

### Experience:

- ▶ Activities Advisor at the University of South Dakota
- ▶ Unit Coordinator for the National Association for Campus Activities
- ▶ Served on the Conference Committee for the Association of Col

lege Unions—International

### Education:

Moorhead State University, (Moorhead, Minn.)

Master of Science in Counseling and Human Development

Bemidji State University (Bemidji, Minn.)

Bachelor of Science in Psychology and Community Services

### What are your responsibilities?

I have a general idea of the major areas I'm going to be working with but I think it's wider in scope than what is stated on paper. Of course I'll be working with Homecoming, SAB, Dog Days, College Bowl, campus activities, and student organizations, but I think the main thing for me to do is try to establish the Campus Activities and Organization Center as a comprehensive activities place where students have resources available. I hope to provide a service for the students and help them with their activities....I'll try to be a contact for everybody and that's not only for students, but also for faculty and staff to get them involved in the campus community. The faculty and staff can learn a lot by attending University events, because that's their opportunity to meet students on an informal basis. I think we're the hub of life outside of class and we're an extension of the students' education, complementing the academic life. I also want people to feel comfortable coming in here and I want them to know what we do. So, we need to work on awareness in education of what we have available because we're new and we have a new name.

### What are your goals for the year?

One of my personal goals is to get a feel for the environment and where people are out here, because every institution is a little bit different. I think I'll discover the direction this office is heading just by knowing what the mission of the University is, more specifically the Student Affairs division. I would like to align what we're doing to fit in the big picture so we're all working towards a common vision. I'd like to get the CAOC established by letting the staff, faculty, and students know what we do and that we're available for them. I am really a believer in staff and faculty getting involved in committees and any other volunteer capacity.

### Are there any changes that you would like to make?

I have a lot of ideas in my mind of where I think we should go. First of all, we need to make sure that there is a collaborative effort by the University so that we're going in the same direction. I would like to work with students and everyone in the offices to find out which direction they want to head before we can actually do that. So, some of the changes that I have ideas for will only be made if there is a group effort to do so. I think there are a lot of things that we can do to bring ourselves into the future, but that might happen farther down the road. Eventually, I would like to computerize the office a

little more. It would make the office more efficient and allows us to provide some services that we aren't able to provide right now. Once I have a chance to see what everyone else sees as a need for our office, I'll have a better idea of the direction we need to go.

### How will your past experience help you here?

My experience at South Dakota was a little bit different, because I didn't serve in the director capacity. I was the advisor and that allowed me to have a lot of contact with students from day to day, and I was involved in a lot of the details of programs. One thing that I benefited from coming from there is that when I started at South Dakota, we were pretty narrowly focused. But, within the four and a half years that I was there, we managed to expand into a comprehensive student activities center that was well-known and well established on campus, so I have had an opportunity to go through that process of expanding and bringing in new programs. There are some things here that are at the same stage as my former position at South Dakota. So, I can almost put myself in a different situation with a somewhat similar setting to bring us forward. It helps to have done that once before. I'm pretty excited about that. It's going to be interesting to see what happens and how fast it will happen.

## The Right One *cont.*

media major, and the Student Activities Board.

The "You Got The Right One Baby, Uh-Huh!" commercials first aired during the Super Bowl in January. The Pepsi-Cola home video contest for America's best, funniest and most entertaining renditions of the Diet Pepsi jingle was announced during the Grammy Awards television broadcast in February. Originally, there were to be three grand prize

winners of \$10,000 each and a spot in a future commercial, but after viewing the nearly 4,000 entries, Pepsi-Cola decided to expand the contest and award ten winners.

"There was such a broad range of original and highly creative videos submitted, we simply couldn't settle on only three best renditions," said Ted Sann, vice chairman and executive creative director at BBDO, Pepsi's national ad agency.

## CPC Update

- Oct. 9 Interviews: Coopers & Lybrand (Audit Associates—accounting majors)
- Oct. 16 7 p.m.—Preview session, The Principal Financial Group, CPC
- Oct. 17 Interviews: The Principal Financial Group (Administrative, Computer Science, Underwriters, Management—all majors) Hormel (Sales Representative, Computer Analyst, Staff Accountant, Quality Control Engineer, Production Management)

# Notables

**Carolyn Clark**, assistant professor of music, was selected for and participated in the National Endowment for the Humanities Seminar "Symphonies after Beethoven" held at Harvard University, July 1-Aug. 15.

**Marlow Ediger**, professor of education, has had the following articles published: "Some Philosophies of School Administration," in the *Journal*; "The Philosophical Arena and Reading," in *Resources in Education*; and "Innovative Evaluation Procedure in Science," in *School Science*.

**Warren Gooch**, assistant professor of music, has had an original musical composition ac-

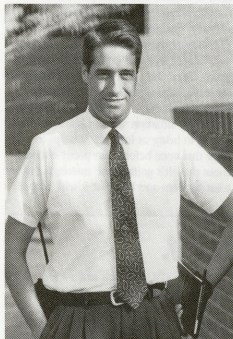
cepted for publication by the Missouri State High School Activities Association. The composition, a choral work titled *The God of Nature*, will be used at Missouri Evaluative Music Festivals held across the state during 1992-93. This is Gooch's fourth composition to be published by the MSHSAA.

**James Jereb**, assistant professor of art, and **J.C. Thorpe**, senior BFA-visual communications major, have had works accepted in the 16th Annual American National Miniatures Show. The competitive exhibition features paintings, prints and sculptures done by artists from America and abroad. Jereb's Monotype "Amorphous" and intaglio "Dusk" and

Thorpe's intaglio print "I Don't Remember Yesterday, Today it Rained" hang from Oct. 3-31 in the Artisans Gallery, Laramie, Wyo., then in the ASUW Gallery 234, University of Wyoming, Laramie, Wyo. The exhibition was juried by Sam Gappmeyer, director of the Nicolayev Art Museum, Casper, Wyo., Linda Hunt, professional artist and manager of the Artisan's Gallery, and Mary Lawler, co-chair of ANMS.

**The NMSU Bulls Rugby Club** received second place at the University of Missouri-Rolla SMIRT Tournament held on Sept. 28. The team defeated Washington University 4-0 and Central Missouri State University 8-4 in overtime. The Bulls lost to St. Louis University 12-6.

## Scherrer Provides Link to Physical Plant



**Facilities Supervisor  
Tim Scherrer's philosophy of working is managing by walking around.**

In the past, you may have noticed Tim Scherrer checking the facilities out in the residence halls. This semester, Scherrer is applying his philosophy for the residential buildings to the academic buildings on cam-

pus. Scherrer has been meeting with division heads to find out which services Physical Plant provides them and to learn what's working well as well as what's not working well.

"When you're working with an operation that includes as many different buildings and has as many different sets of problems and circumstances, you have to get out there and see and hear what the problems are," Scherrer said.

When a problem gets to Scherrer, there is almost always something unusual about the situation. He feels his contact with people in the academic buildings has been positive and helps improve communication.

"I'm trying to find out those little nagging problems that don't get solved through the normal system and then take that information and determine what caused the problem and what the solutions may be," Scherrer said.

Solving problems is nothing new to Scherrer, who served eight months as an intelligence watch officer and briefer with a crisis action team during the Persian Gulf War. He was part of the U.S. Transportation Command that provided the strategic lift into Southeast Asia.

Scherrer is a 1987 graduate of Northeast. He has been facilities supervisor for three years.

Scherrer noted that Physical Plant is a department that people only see when there is something wrong and that much of what they try to do is make university operations as efficient as possible.

"You don't notice the temperature in your room until it's cold," Scherrer said.

## Hall of Fame Honorees

Thirteen people who have made contributions to the intercollegiate sports program at Northeast will be inducted into the NMSU Hall of Fame, Oct. 12.

Activities honoring the 1991 inductees will consist of recognition at a halftime program during the Bulldog football game with Pittsburg State (Kan.) in the afternoon and the ninth annual banquet and formal induction ceremony that evening, hosted by the University Alumni Association. The football game will begin at 1:30 p.m. at Stokes Stadium. The banquet and ceremony will be held at 6:30 p.m. in the Georgian Room.

This year's inductees are: Mike Berentes '71, Charles Blakley '71, Dick Brownlee '63, Terry Bussard, Carroll Cochran '36, Jerry Germann '65, Dr. Howard Gross, Ray Mach '55, Ted Michael '65, Leo Petree '15, Steve Powell '78, Ron Selkirk '69 and John Semanek '49.

Tickets are available for \$10 each in the Alumni/Development Office, McClain Hall 106.

# Notes

**Windfall**, NMSU's literary magazine, is now accepting submissions of poetry, short fiction, short drama, art and photography for the spring issue. Submissions should not include the submitter's name on the work. Please include name, address and the works' titles on a separate sheet. Deadline for submissions is Nov. 22. Mail to: Windfall, SUB-NMSU, Kirksville, MO 63501.

**Scholarships** of \$2,250 each are available for students considering a career in the nuclear utility industry from the National Academy for Nuclear Training. To qualify, you must have a minimum 3.0 GPA as of Jan. 1, 1992 and must have at least one, but not more than three academic years of study remaining. Information on additional requirements and application procedures are available in the Financial Aid Office, McClain Hall 100.

**Forestry and wood science students** at the junior level are invited to compete for scholarships of \$1,000 to \$2,000 from Northeastern Loggers Association. Applicants must submit an essay on the topic "A New Image for the Forest Industry: What Should It Be?" For more information, contact the Financial Aid Office, McClain Hall 100.

**\$750 scholarships** are available from the Federated Garden Clubs of Missouri, Inc. to junior, senior and graduate students pursuing studies in fields related to plants, gardening, conservation or environmental control. Applications are available in the Financial Aid Office, McClain Hall 100. Deadline is Oct. 18.

**The Career Placement Center** is now open until 8 p.m. on Wednesday nights. No appointments are necessary.

**Counseling** is available to full-time University students through Professional Counseling Services, a private counseling center located downtown at 403 North Elson Street (two blocks North of the First National Bank). Student's cost is \$5 for each private session and \$2 for each group session. Either the student's health insurance or the University will cover the rest of the cost. To make an appointment, call 665-1964. Sessions are strictly confidential. For more information, contact Clydia Case, coordinator of counseling services, McClain Hall 101, 785-4031. Dr. Case and her intern Laura Harris are available for consultation and can refer you to a range of supportive services on and off campus.

**Bright Flight** scholarship recipients can sign for their checks 8:30 a.m.-4 p.m., at the

Cashier's Window, McClain Hall. Recipients must be enrolled full time and present a picture ID

**The Women's Resource Center** is interested in papers written by students in all disciplines regarding gender issues. These papers would be kept on file at the Center as a student resource with the possibility of publication through the University. For more information, contact Jen Plummer at 627-2943.

**Delta Phi Alpha**, the German honorary society, will have tutoring sessions from 6-8 p.m., Mondays and Thursdays, in Ophelia Parish 117.

**A compost site** is available for University faculty and staff at the University Farm, located on U.S. Highway 8. Grass, leaves and garden waste can be brought in for composting from 5-7 p.m. on Wednesdays and 9:30 a.m.-12:30 p.m. on Saturdays. This service, sponsored by Sigma Alpha, is free and composted wastes will be made available for later use. For more information, call 665-8605.

**Connexion** is Peterson's new service that links people to employers and graduate schools across the country. All you do is enter your biographical data into the Connexion database. Registration forms are available in the Career Placement Center's "Hoffile."

**The Missouri Association of Catholic College Students (MACCS)** is sponsoring a service sale Oct. 21-27 as a fundraiser for the MACCS conference to be held Feb. 7-9. For more information, contact Joan Martin at 785-7605 or the Catholic Newman Center at 665-4357.

**The Writing Center**, McClain Hall 303, will hold walk in hours from 7:30-9 p.m. Tuesday and Thursday evenings. Daytime hours continue to be 11:30 a.m.-4:30 p.m. Monday, 10:30 a.m.-4:30 p.m. Tuesday-Thursday and 10:30 a.m.-3:30 p.m. Friday.

**The Writing Center**, McClain Hall 303, will hold an essay exam workshop from 7:30-9:30 p.m., Oct. 10. Sign up for the workshop at the Writing Center.

**Ryle South College** is sponsoring Stammtisch: dinner and discussion in German from 5:30-6:30 p.m. every Monday in the Ryle Hall private dining room. All ability levels are welcome.

**O.S.C.A.R.** is sponsoring "How Bazaar!" a flea market/rag sale/art sale Homecoming event, from 11 a.m.-4 p.m., Oct. 24, on the Mall. They need donations of second-hand items (clean and in reasonably good condition) for their sale. Donation boxes have been set up at all residence hall front desks and on the SUB first floor. All proceeds from the bazaar go to the Alaska Coalition to prevent oil drilling in the Arctic National Wildlife Refuge.

**The Health and Exercise Science Club** is sponsoring an aerobics class from 8:30-9:30 p.m. every Tuesday and Thursday in Pershing Building 225 (the Dance Studio). Cost is 50 cents a session.

**The Division of Social Science** announces a call for papers for the Second Annual Undergraduate Philosophy/Religion Conference to be held on Nov. 15-16. Deadline for submission is Oct. 25. Papers are to be turned in to the Social Science Division Office, McClain Hall 214 or David Murphy's office, McClain Hall 230. Papers should be 9-12 pages long (about 20 minutes reading time). Authors of accepted papers will be notified by Nov. 6.



## BOTTOM LINE

*Northeast Today* introduces The Bottom Line as a weekly addition to the publication. The Bottom Line will feature institutional budget-saving tips for faculty, staff and students submitted by you. Your ideas will be included in upcoming issues of *Northeast Today*. We need your ideas. Send your cost-cutting ideas to *Northeast Today*, McClain Hall 106.

# This Week

## 7 MONDAY

- ▶ **Intramural volleyball** begins, Pershing Arena
- ▶ 5:30 p.m.—**Elementary Education Club** open meeting, Violette Hall 119
- ▶ 5:30-6:30 p.m.—**Stammtisch:** dinner and discussion in German, sponsored by Ryle South College, Ryle Hall private dining room. All ability levels are welcome.
- ▶ 6:30 p.m.—**"Why Racism is Inevitable in the University,"** presentation by Robert Mielke, assistant professor of English, Ryle Hall main lounge
- ▶ 7 p.m.—**Open panel discussion** of students and professors on the 101 myths about Mormons, sponsored by the Latter-Day Saint Student Organization, Violette Hall 121  
—**"What to Look for in a New Home,"** presentation by Judy Smith, real estate agent with Roark Realtors, Jefferson City, sponsored by Delta Sigma Pi, SUB Alumni Room
- ▶ 7:30 p.m.—**"Dive Into Something New,"** Sigma Chi Delta local social sorority rush party/informational meeting, SUB Room 5. The meeting is open to women with a 2.5 GPA or higher.
- ▶ 8 p.m.—**NMSU Live "Howling at the Moon,"** Circle Drive
- ▶ 8-10 p.m.—**Reception** welcoming new communications faculty members David Fortney, Tina Frederickson and Closepet Ramish, 802 E. Randolph Apt. 1. All communication students and faculty are invited to stop by.

## 8 TUESDAY

- ▶ **Sign-up deadline** for the SAB Weekend Get Away to Chicago, SAB Office, SUB. Cost is \$69 with an SAB sticker and \$75 without.
- ▶ 12:30-1:30 p.m.—**Stress Talk,** a presentation by Clydia Case, coordinator of counseling services, on ways to effectively cope with the stresses of being a college student, SUB Room 1; also 1:30-2:30 p.m.
- ▶ Oct. 9 and 3:30-4:30 p.m. Oct. 10.
- ▶ 3:30 p.m.—**"The Sophomore Writing Experience: Assisting Students Through Self-Assessment,"** SUB Alumni Room. Faculty and professional advisors are specifically invited. Other members of the campus community are also welcome.

- ▶ 7 p.m.—**Society for Creative Anachronism** open meeting, Violette Hall 140  
—**Young Democrats** meeting, Violette Hall 140
- ▶ 7:30 p.m.—**Structureless creative writing group,** McClain Hall 303
- ▶ 8 p.m.—**Slide presentation** by Thomas McGovern of his work in sculpture, SUB Alumni Room. A reception will follow the presentation. McGovern was one of the winners of the 1991 National Art Competition held last February at NMSU. His works will be exhibited at the University Art Gallery, first floor Ophelia Parrish, Oct. 21-Nov. 8. The presentation and reception are free and open to the public.
- ▶ 8:30 p.m.—**"Prepare to Make Waves,"** Sigma Chi Delta local social sorority rush interest party, SUB Tangerine Room. The meeting is open to women with a 2.5 GPA or higher.

## 9 WEDNESDAY

- ▶ 1:30-2:30—**Stress Talk,** a presentation by Clydia Case, coordinator of counseling services, on ways to effectively cope with the stresses of being a college student, SUB Room 1
- ▶ 2 p.m.—**Major Field Achievement Test: Science and Fine Arts,** SUB
- ▶ 3:45 p.m.—**Homecoming meeting,** SUB Rooms 2 and 3

## 10 THURSDAY

- ▶ **United Way Food Fast**
- ▶ 11 a.m.-2 p.m.—**Voter registration,** SUB
- ▶ 3:30 p.m.—**"Have You Considered a Career in Teaching?"** MAE informational meeting, Violette Hall 290. Division of Education faculty and staff will present information regarding the MAE program, Early Field Experiences and answer questions. Open to all students interested in pursuing an MAE degree.
- Stress Talk,** a presentation by Clydia Case, coordinator of counseling services, on ways to effectively cope with the stresses of being a college student, SUB Room 1
- ▶ 3:30-4:30 p.m.—**"A Realistic Approach to Overseas Opportunities,"** CPC workshop, Violette Hall 252
- ▶ 7 p.m.—**Pre-Physicians Organization** meeting, SUB Activities Room
- ▶ 7:30 p.m.—**"2001: A Space Odyssey,"**

- presented by the Navigators, Violette Hall 111. The movie is free and open to the public.
- "Affirmative Action: Are the Scales Tipped in our Favor?"** forum sponsored by the Black Law Student Association, SUB Alumni Room.
- ▶ 8 p.m.—**Spike Lee's "Jungle Fever,"** presented by the Psychology Club, Baldwin Auditorium. Admission is \$1.50.

## 11 FRIDAY

- ▶ 7 and 9:30 p.m.—**"The Five Heartbeats,"** SAB movie, Baldwin Auditorium. Admission is \$2 or free with an SAB sticker.
- ▶ 9 p.m.-1 a.m.—**Club Kirk,** sponsored by the Student Activities Board, Kirk Gym. Admission is free.

## 12 SATURDAY

- ▶ **Deadline** for Homecoming parade entries
- ▶ 8 a.m.—**Graduate Record Examination,** SUB
- ▶ 1 p.m.—**Bulls Rugby Club** vs. University of Kansas (KU), rugby field
- ▶ 1:30 p.m.—**Bulls football** vs. Pittsburg State University (Kan.), Stokes Stadium
- ▶ 3 p.m.—**Men's soccer** vs. Rockhurst College, soccer field
- ▶ 6:30 p.m.—**Athletic Hall of Fame** banquet and induction, SUB Georgian Room

## 13 SUNDAY

- ▶ 2 p.m.—**Women's soccer** vs. University of Missouri-Rolla, soccer field

## 14 MONDAY

- ▶ 5 p.m.—**Registration deadline** for the Blazing Banner Contest
- ▶ 6:30 p.m.—**Poetry reading** by Jim Thomas, professor of English, from his book *Seed Time Harvest Time*, Ryle Hall main lounge
- ▶ 8 p.m.—**The Lyric Opera of Kansas City's "The Barber of Seville,"** Lyceum Series presentation, Baldwin Auditorium  
—**"A Journey to Kenya: Lifestyle and Culture of the Kenyan People"** presented by Godfrey Muriuki, visiting Fulbright scholar from the University of Nairobi, Kenya, SUB Alumni Room