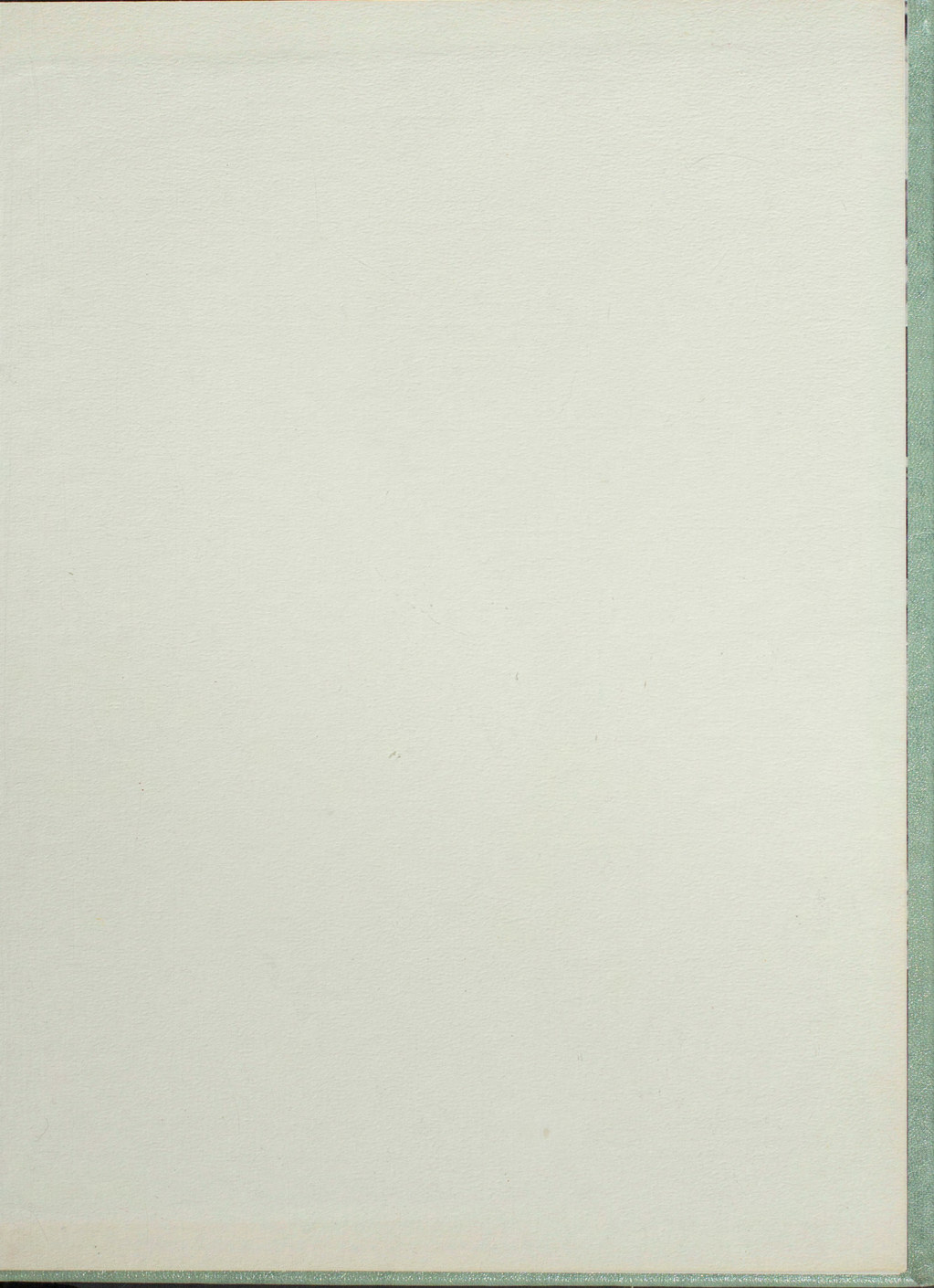




ECHO





THE 1950 ECHO

Published by the student body of the

NORTHEAST MISSOURI STATE TEACHERS COLLEGE, KIRKSVILLE, MISSOURI

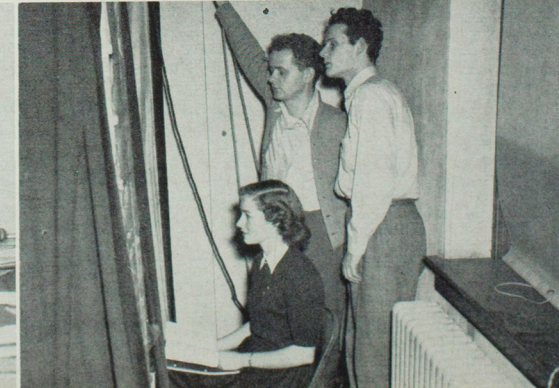
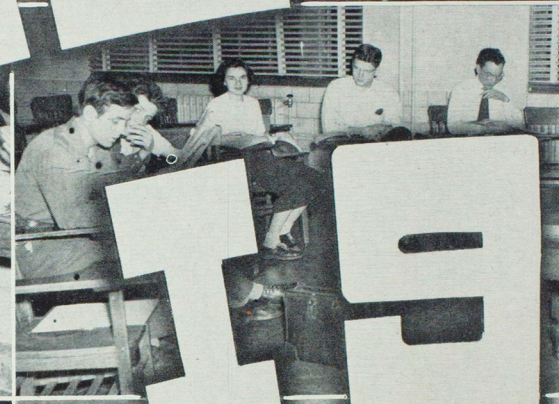
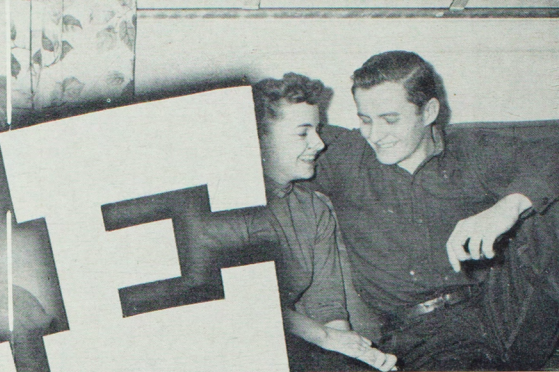
DUANE COLE, *Sponsor*

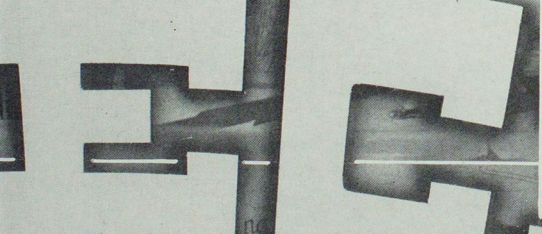
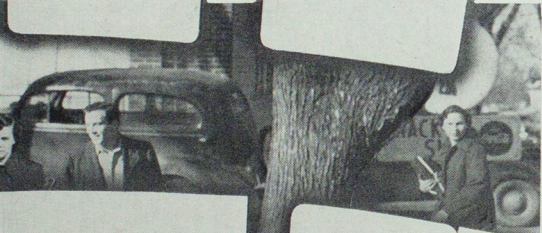
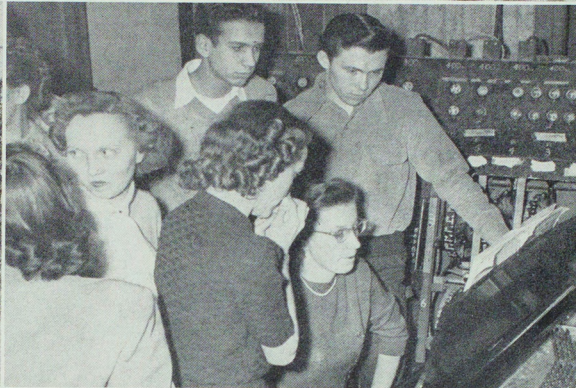
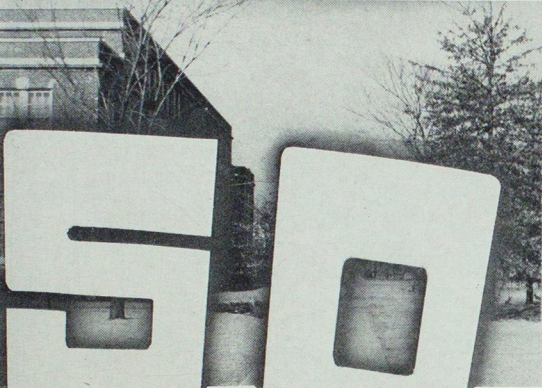
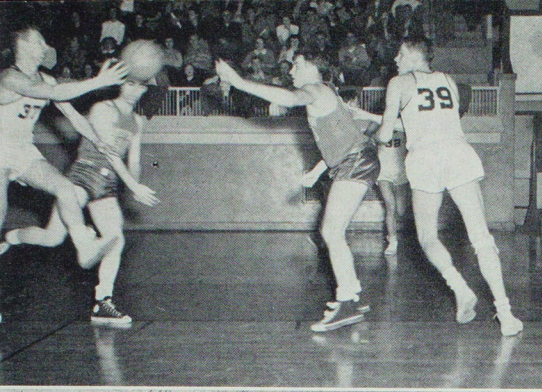
JOHN E. GOEKE, *Editor in Chief*

BAXTER B. STINSON, *Business Manager*

DAVID R. JANSON, *Assistant Editor*

FRED P. HANES, *Assistant Business Manager*







NASON HALL, RESIDENCE HALL FOR WOMEN



NORTH ENTRANCE TO THE CAMPUS

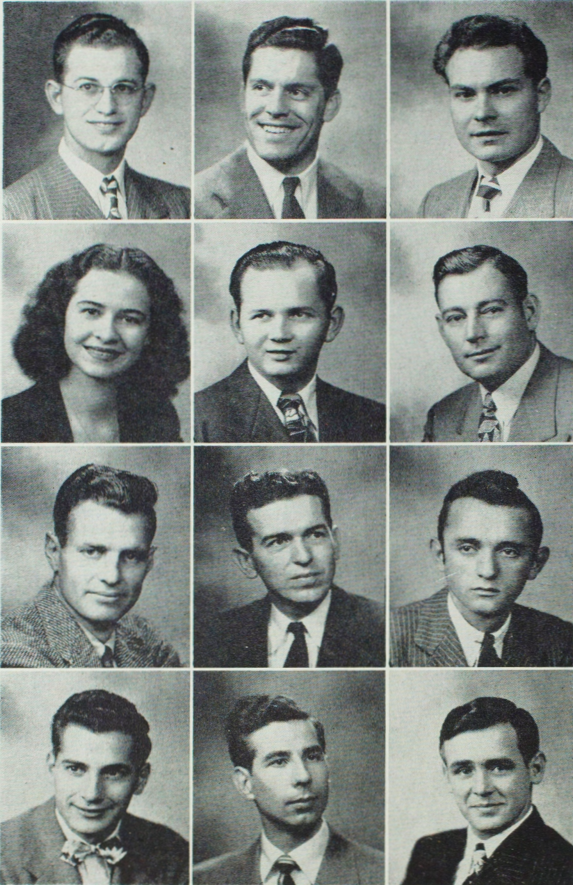


CLASSES



JOHN R. KIRK MEMORIAL

Graduate Students



ORVILLE BOWERS *Kirksville*
A. B. History

CHARLES DURALL *Kirksville*
B. S. in Ed. School Administration

ROGER HOBBS *Breckenridge*
B. S. Business Education

NOEMY JIBBEN *San Jose, Costa Rica*
B. S. English Literature

EUGENE JOHNSON *Elmer*
B. S. in Ed. School Administration

LESTER KRAFT *Maywood*
B. S. in Ed. School Administration

ORVILLE LAIR *Kirksville*
B. S. in Ed. Social Science

GEORGE LEACH *Kansas City*
B. S. Business Education

FRANCIS LINDHORST *Monroe City*
B. S. in Ed. Music

JOHN MANGIARACINA *Kansas City*
B. S. in Ed. Business Administration

ROBERT PFAFF *Troy*
B. S. in Ed. History

ROBERT SLOAN *Odin, Ill.*
B. S. in Ed. Music

GRADUATE STUDENTS NOT PICTURED

JESSE H. MICKELSON
ARMON ADAMS
MARGARET BULLOCK

THOMAS COOPER
ROBERT GARRETT

EDWARD SHUMATE
GORDON THOMAS
ROBERT UTTERBACK

To further the aims of the Teachers College in giving "thorough scholastic training" plus the professional preparation needed by teachers the college instituted a graduate program. Students may earn the degree of Masters of Arts in five fields, Social Science, Language and Literature, Business Education, Fine Arts, and Education.

Seniors

DOROTHY JEAN ALLEN *Shelbina*

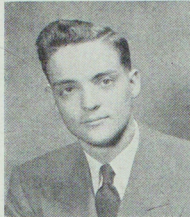
CHRIS AUGSPERGER *Ottumwa, Iowa*

MARSHALL AUGUSTINE *Lewistown*
Sigma Tau Gamma, Pi Omega Pi.

GORDON COLLETT *Kirksville*
Blue Key, Sigma Tau Gamma.

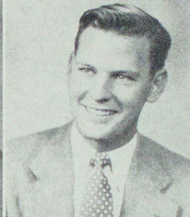
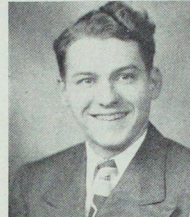
ROBERT BAILEY *Kirksville*

MARTHA ELLEN BATES *Kirksville*
Alpha Sigma Alpha, College Players, Vocal
Chords.



LARRY BELLMARD *Bethany*

CARL BENNETT *St. Louis*
Blue Key, Sigma Tau Gamma.



STEPHEN MELVIN *Lancaster*
Senior Class President
Blue Key, Sigma Tau Gamma, Who's
Who, Kappa Delta Pi.

DORIS BIGGS *Kirksville*
Delta Sigma Epsilon, W. A. A.,
B. S. U.

JOHN BIROS *Novinger*
Phi Sigma Epsilon, Ag Club.

RICHARD LOCHER *Roodhouse, Ill.*
Senior Class Vice-President
Sigma Tau Gamma, Historical So-
ciety, Student Social Committee.

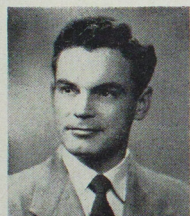
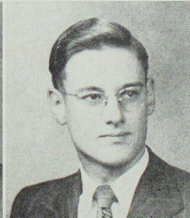
BEVERLY BLACK *Raton, N. M.*
Alpha Sigma Alpha, Kappa Delta Pi,
Student Council.

DELBERT BOLEY *Kahoka*
Phi Sigma Epsilon, Sigma Zeta, Band,
Orchestra.

AZALEA BELT *La Plata*
Senior Class Secretary-Treasurer
Alpha Sigma Alpha, W. A. A.

WINN BARNHOUSER *Boonville*

LAVON BOTTS *Nonetty*



Seniors



GENE BOWEN *Kirkville*
Sigma Sigma Sigma, Student Council,
Ellen H. Richards, Cardinal Key.

SUE BRUMMALL *Salisbury*
Alpha Sigma Alpha, Alpha Phi Sigma,
Chorus.

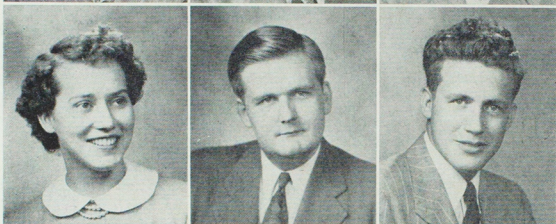
PETER BUBAN *Centerville, Ia.*
Kappa Delta Pi.



RONALD BURT *Goldsberry*

DON CANNON *Gurnee, Ill.*

MILDRED CARTER *Brookfield*
Pi Kappa Sigma, Alpha Phi Sigma,
A. C. E.



IRIS CHARLESWORTH *Hannibal*
Delta Sigma Epsilon, W. A. A., Student
Social Committee.

HARRY COLE *Painesville, Ohio*

EARL COWAN *Kirkville*



MAYSEL CRIST *New Boston*
Alpha Sigma Alpha, Alpha Phi Sigma,
Kappa Delta Pi, A. C. E.

ROBERT CROSS *Gilman City*
Industrial Arts Club.

GAIL CRYSTAL *Kirkville*



HOWARD CUMMINS *Clifton, N. J.*

BARBARA DANIELS *Moulton, Iowa*
Pi Kappa Sigma, Pan-Hellenic Council,
Ellen H. Richards.

DAROLD DAVIS
Industrial Arts Club, K-Club, Art Club,
Phi Sigma Epsilon, Alpha Phi Omega.



WILLIAM DAVIS *Kirkville*
Sigma Tau Gamma, Pi Omega Pi, Band.

LOIS DEMING *Keokuk, Iowa*
Cardinal Key, Kappa Delta Pi, Alpha
Phi Sigma.

AVA DEMRY *Seymour, Iowa*

Seniors

GILBERT DEMRY *Seymour, Iowa*
Alpha Phi Sigma, Kappa Delta Pi,
College Players.

ELEANOR EAGAN *Albuquerque, N. M.*

ROY ELLINGTON *Fairfax, Ala.*

ROBERT ELSEA *Green Castle*

FRANK FECHTLING *Novinger*

VIRGINIA FECHTLING *Novinger*

THEODORE FISHBACK *Hannibal*
Phi Sigma Epsilon, Industrial Arts
Club.

CHARLES FITTS *Dupo, Ill.*
Phi Sigma Epsilon, K-Club.

ESTOL P. FRANKLIN *Fairfield, Iowa*
Industrial Arts Club.

RONALD-FREEMAN *Kirksville*

CAROL ANN FUNK *Kirksville*
Alpha Sigma Alpha, Student Council,
Pi Omega Pi.

DONALD FUNK *Kirksville*
Phi Sigma Epsilon, Industrial Arts
Club.

VERA GARES *Bonaparte, Iowa*
Cardinal Key, Kappa Delta Pi, Pi
Omega Pi, Sigma Zeta.

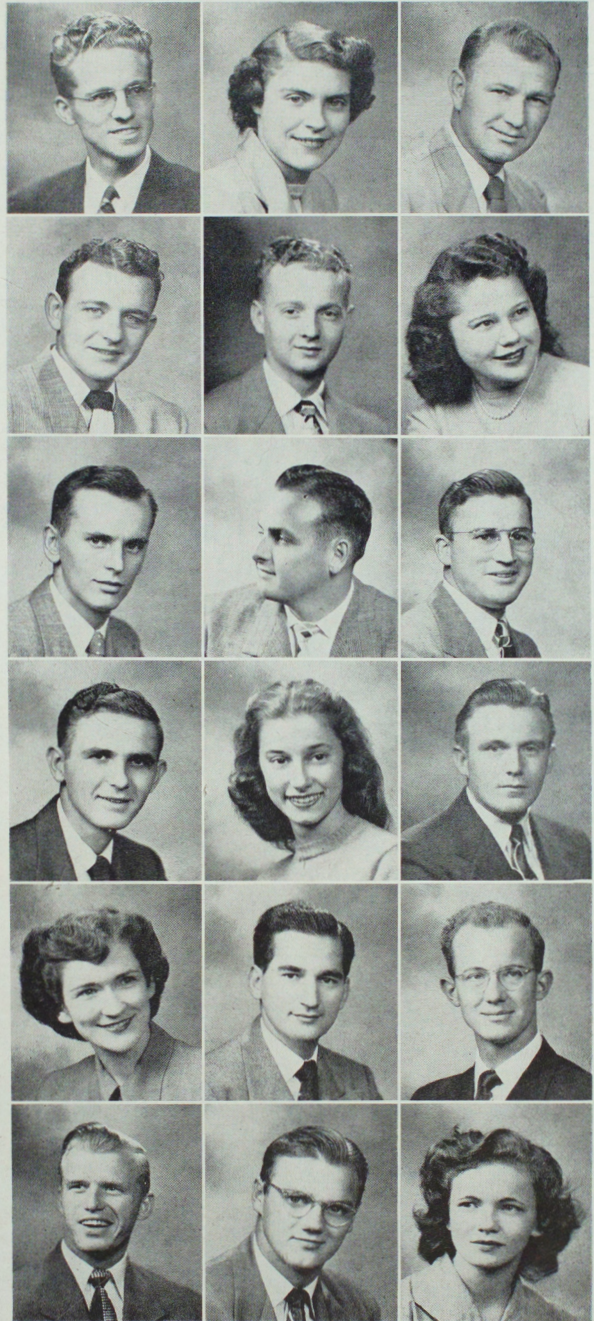
TODD GIGLIOTTA *Brooklyn, N. Y.*
Alpha Phi Omega.

JOHN E. GOEKE *Kirksville*
Blue Key, Who's Who, Kappa Delta Pi,
Thalian Guild, College Players, Vocal
Chords, Echo Editor 1950.

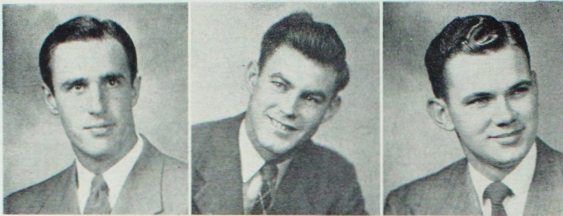
DARRELL GOURLEY *Mountain Grove*

GORDON GROBER *Kirksville*
Blue Key, Alpha Phi Omega, Thalian
Guild, College Players, Gymnastics
Club, Vocal Chords.

RUTH HAGAN *Norborne*



Seniors



HARRY HALL *Boonville*
 WALTER HAMMOCK *Hannibal*
 WARREN HARDING *Gilman City*



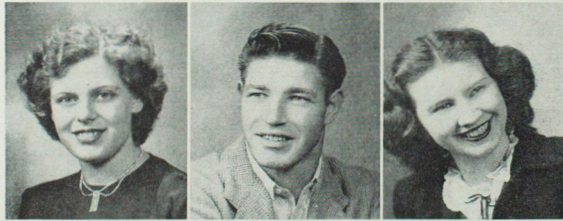
BECKY HAWKEY *Madison, Ohio*
 Pi Kappa Sigma, Student Social Committee, Interdenominational Council, Debate.
 BETTY HICKMAN *Edina*
 DWAIN HORN *Moulton, Iowa*
 Pi Omega Pi, Pres.



BETTY HOWERTON *Bowling Green*
 EMMA HUDSON *Kirksville*
 Pi Omega Pi.
 BUD HUNTER *La Plata*



DARREL IRELAN *Green City*
 JAMES JENKINS *Kirksville*
 RICHARD JOHNSON *Kirksville*
 Blue Key, Sigma Tau Gamma, Alpha Phi Omega, Debate, College Players, Industrial Arts, Historical Society.



RUTH JORGENSEN *Greencastle*
 BILL KELSAY *Boonville*
 MARY KERR *Perry*
 Delta Sigma Epsilon, Historical Society.



WINIFRED KIMLER *Atlanta*
 Delta Sigma Epsilon, Pan-Hellenic Council.
 ANN KING *Hannibal*
 MERL GLENN KUMM *Kirksville*
 Blue Key, Sigma Tau Gamma, Sigma Zeta, Student Council, Alpha Phi Omega, Inter-Fraternity Council, Student Council, Social Committee.

Seniors

MARILYN LAMBDIN *Hannibal*

FREDERICK LAUER *Queen City*
Phi Sigma Epsilon, Student Social Committee, Square and Compass Club.

JEAN PEVEHOUSE LEACH *Malvern, Iowa*
Alpha Sigma Alpha, Cardinal Key, Who's Who, Aeolian Club, A Capella Choir.

WARREN LEE *Ethel*

MARY LEHR *Scarsdale, N. Y.*

TONY LEMA *Nantucket, Mass.*
Phi Sigma Epsilon, K Club.

WILLIAM LEWIS *Roodhouse, Ill.*

DAVID LINTNER *Kirksville*

VIRGINIA LOVE *Centerville, Iowa*

HARLEY MAGGART *Trenton*
Historical Society.

ZELDA MAGGART *Trenton*
A. C. E., Alpha Phi Sigma.

HERSCHEL MARTIN *Kirksville*

PALMER MASON *Raton, N. M.*

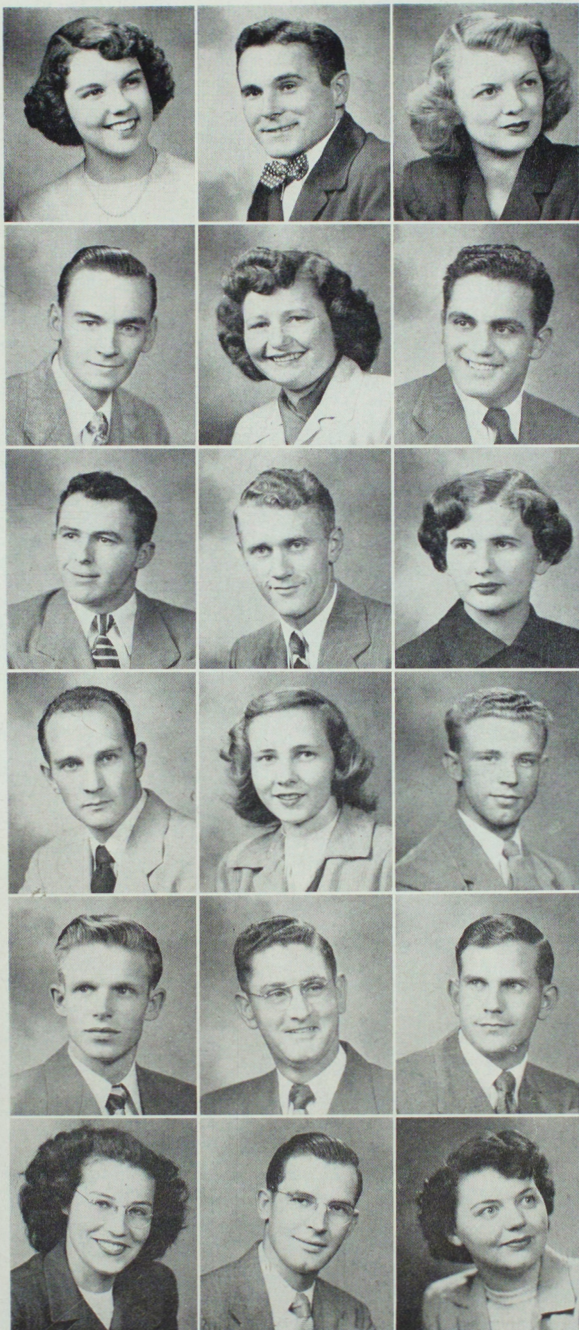
R. E. MATHEWS *Cincinnati, Iowa*
Industrial Arts Club.

WILLIAM MATTHEW *Kirksville*
Phi Sigma Epsilon, Alpha Phi Omega, Interfraternity Council, K Club, Gymnastics Club, Industrial Arts Club.

ETHEL MAE McCABE *Kirksville*
Cardinal Key.

WILLIAM McCLANAHAN *Kirksville*
Sigma Tau Gamma, Band, Orchestra.

BLANCHE MERCER *Kirksville*
Pan-Hellenic Council, Alpha Sigma Alpha, Ellen H. Richards.



Seniors



DON MERRIT *Seymour, Iowa*
K Club, Phi Sigma Epsilon, Student Council, Who's Who.

LEONARD MOORE *Memphis*
Pi Omega Pi, Sigma Tau Gamma.

IRENE MOOTS *Kirksville*

MARY FRANCES MORRIS *Brookfield*
Ellen H. Richards Club.

JOHN MORRISON *Chicago, Ill.*

MARIBEL NORRIS *Novelty*
Pi Kappa Sigma, A. C. E., W. A. A., Pan-Hellenic Council, Square Dance Club.

SHIRLEY OLSON *Kirksville*
Sigma Sigma Sigma, Pan-Hellenic Council, Sigma Zeta, Kappa Delta Pi, Alpha Phi Sigma, Cardinal Key, Who's Who.

RUTH PENROD *Flippin, Ark.*
Historical Society, Chess Club, A. C. E., Alpha Phi Sigma, Pi Kappa Sigma.

GLEN PILAND *Crossville*

JANE PITTS *Warrenton*

ROBERT POWERS *Narrouburg, N. J.*

STANLEY READ *Auburn, Me.*
Alpha Phi Omega.

AMBER REED *Milan*

JAMES REID *Eolia*
Industrial Arts Club.

HERBERT RHOADES *Queen City*

BILLIE JEAN RIXEY *Unionville*
Alpha Sigma Alpha, Pi Omega Pi, Student Council.

DONALD ROBINSON *Kirksville*

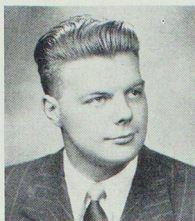
WALLY SCHNEIDER *Stanton, Nebr.*
Blue Key, Sigma Tau Gamma.

Seniors

DONALD SCRIVENS *Kirksville*
Blue Key.

C. C. SEALOCK *Trenton*

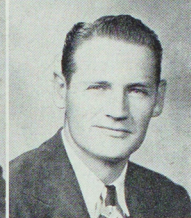
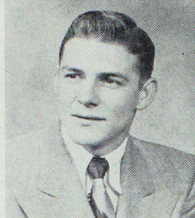
"BILL" SECO *San Jose, Costa Rica*
Phi Sigma Epsilon, International Club.



STAN SERWATKA *Madison, Ill.*
K Club, Football, Baseball.

NORMA SHEARER *Chillicothe*
Alpha Sigma Alpha, Cardinal Key,
Kappa Delta Pi, Aeolian Club, Who's
Who, A Cappella Choir.

OLEN SIMMONS *Kirksville*



JEAN ANN SKINNER *Unionville*

WILLIAM SLICKER *Jefferson City*
Sigma Tau Gamma, Band, Chorus,
Aeolian Club, Music Educators Con-
ference.

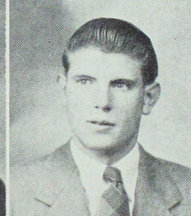
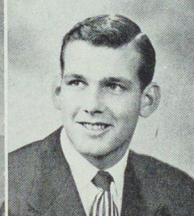
WILLIAM SMOOT *Kirksville*



RICHARD SPAVINS *Northport, N. Y.*

WILLIAM SPEAK *Kirksville*
Student Council, Phi Sigma Epsilon,
Student Social Committee, K Club,
Industrial Arts Club, Alpha Phi Omega,
Who's Who.

CHARLES SPEARS *Kirksville*



MARY SPRING *Quincy, Ill.*
Historical Society, A. C. E.

JAMES STEELE *Milan*

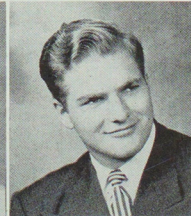
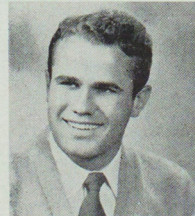
GENE STEIGHORST *Quincy, Ill.*



JAMES STIMAN *Seymour, Iowa*

BAXTER STINSON *Independence*
Echo Business Manager, College Play-
ers, Thalian Guild, Alpha Phi Omega.

JAMES STOOKEY *Kirksville*
Blue Key, Alpha Phi Omega, Sigma Tau
Gamma, Who's Who, K Club, Gym-
nastics Club, College Players, Thalian
Guild, Student Social Committee.



Seniors



NEVA LEE SWAN *Center*
 CHARLOTTE THOMPSON *Clarence*
 Delta Sigma Epsilon, Historical Society.
 BURNELL THRASHER *Moberly*

DONALD TRUITT *Kirksville*
 Blue Key, Who's Who, Sigma Tau
 Gamma, Alpha Phi Omega, Debate,
 Football, Student Council, Student So-
 cial Committee, Pi Kappa Delta, Pre-
 Law Club.

ROBERT UMBARGER *Kirksville*
 Blue Key, Sigma Tau Gamma.

FRED VEACH *Davenport, Iowa*
 Phi Sigma Epsilon, Gymnastics Club.

TED VRENICK *Granite City, Ill.*
 Blue Key, Phi Sigma Epsilon, Student
 Council, K Club, Industrial Arts Club.

DONALD WALKER *Green Castle*
 Blue Key, Phi Sigma Epsilon, Alpha
 Phi Sigma, Kappa Delta Pi, Sigma Zeta,
 Echo Photographer.

MARILYN WALKER *Eldon, Iowa*
 Delta Sigma Epsilon, Pi Omega Pi,
 Kappa Delta Pi.

SUE WARD *Kirksville*

ADDISON WEBBER *La Plata*
 Echo Photographer, Band.

JOSEPH WEIS *Kansas City*
 Phi Sigma Epsilon, K Club.

JOHN WELCH *Edina*
 Pi Omega Pi.

HARLENE WELLMAN *Kirksville*
 Cardinal Key, Sigma Sigma Sigma,
 Alpha Phi Sigma, Sigma Zeta, Who's
 Who, Orchestra.

JACK WELLS *Granite City, Ill.*
 Blue Key, Phi Sigma Epsilon, Student
 Council, K Club, Student Social Com-
 mittee, Alpha Phi Omega.

CLYDE WILLIAMS *St. Louis*
 Phi Sigma Epsilon, K Club, Football,
 Square Dance Club.

MARYBELLE WOODWARD *La Plata*
 Pi Kappa Sigma, W. A. A., Historical
 Society.

EDWARD ZALEN *La Porte, Ind.*

Seniors Not Pictured

ANDERSON, WARREN DEAN
ASPERGER, JOSEPH JOHN
BAILEY, WILLIAM LEE
BRAGG, FRANK BERRY
BUFORD, JOSEPH LEON
BRUMMALL, J. DON
BURNSIDE, ROBERT LEE
CALLISON, CARLTON W.
CAMPBELL, WILLIAM HENRY
CLEETON, SAM, JR.
CREATH, DON L.
CUSTER, RICHARD
DETERMAN, RUTH C.
DUFFEY, ROTHALEA GLEASON
ENK, ROBERT E.
EPPLEY, LYMAN L.
GASH, RUTH
GOODDING, PATRICIA JEAN
GROGAN, WILLIAM B., JR.
HILLS, STELLA AGNES
IVERS, KENNETH H.
LOPAT, JOSEPH ANTHONY
MACINTYRE, ARTHUR E.
MARRS, HAROLD J.
MCANULTY, RONALD JOY
MILLER, DOROTHY KARLENE
MUMMA, EMMETT ELLSWORTH
PABST, ALVIA C.
PAYNE, HELEN SEALOCK
REED, HENRY, JR.
SANDBOTHE, GERALD E.
SHELTON, MERLIN BASIL
STEIGHORST, EDWIN E.
WIGEN, DONALD TRUMAN

Juniors



PAUL ANDERECK *St. Louis*

ELVA ANDERSON *Louisiana*

CORA JEAN BAILEY *Kirksville*

LOIS BEGER *Foristell*

MARY BLISS *Kirksville*

VERNON BODDY *Marceline*

HERBERT BOYLES *Purdin*

CAROL BRENNECKE *Marshalltown, Iowa*

MARJORIE BREWER *Bynumville*

JACK BROTEMARKLE *Atlanta*

CLYDE BROWN *Kirksville*

JEAN BURK *Kansas City*

COLETTE CADY *St. Louis*

NANCY JEAN CALDWELL *Leonard*

WILHELMINE CHESTER *Granby*

LOLA CHILDERS *Rutledge*

NED CHURCHWELL *Shelbyville*

MARJORIE CLOUGH *Kirksville*

Juniors

JEAN COOK *Chillicothe*

MAXINE COWELL *Snyder*

ROBERT CROCKER *Kirksville*



RICHARD CUSTER *Green Castle*

JOSEPH DANCLOVIC *Kansas City*

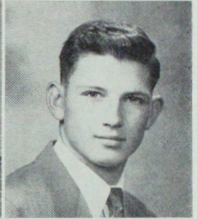
ROBERT DELANEY *Baring*



PEGGY DODGE *Brookfield*

CLAYTON DODSON *Kirksville*

LINUS DOWELL *St. Joseph*



FRANCES DRURY *Kirksville*

CHESTER DURHAM *Macon*

FARRIDA FALLAH *Teheran, Iran*



KEITH FETERS *Kirksville*

MARIE FLEMING *Huntsville*

JAMES FOX *Kirksville*



DOROTHY FRAZIER *Milan*

CHARLES FUGATE *Memphis*

EVERETTE GIBSON *Unionville*



Juniors

RUSSELL GILSTRAP *Kirkville*

RAYMOND GOEKE *Kirkville*

DAVID GOOCH *Decatur, Ill.*

EDWARD GRIM *Kirkville*

ILENE GUFFEY *Kirkville*

GLADYS HAGAN *Centerville, Iowa*

JAMES HARDY *Kirkville*

DONALD HAWKINS *Wyaconda*

LYLE HELLYER *Seymour, Iowa*

CATHARINE HENRY *Philadelphia, Pa.*

ROBERT HIRD *Burlington, Iowa*

ART HOCHSTEDLER *St. Joseph*

JOAN HOOK *Cairo*

ROLLIE HOUGHINS *Fullon*

WILMER HOWARD *Memphis*

MARTHA JAMES *Brookfield*

OLIN JOHNSON *Kirkville*

PAUL JOHNSON *Kirkville*



Juniors

CLARENCE JONES *Ocala, Fla.*

LENORA KARCH *St. Louis*

PAUL KAYE *Sumner*



JACK KELLY *Kirkville*

ROSE KELLY *Kirkville*

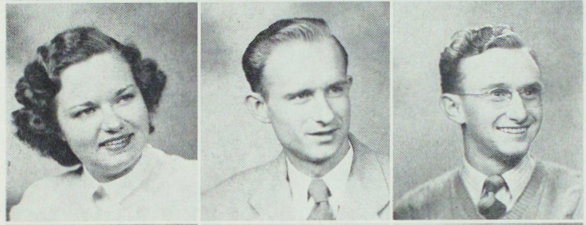
GEORGE KELSO *Ethel*



JANE KENNAN *Laddonia*

ROBERT KERWOOD *McGregor, Texas*

HUGH KETCHAM *Atlanta*



WANDA KIMBRELL *Glenwood*

MARY KING *Bloomfield, Iowa*

MITZI KLEIN *Dwight, Ill.*



MILTON KOGER *Hamilton, Ohio*

NORMA LAVOO *Hannibal*

EMILENE LEHR *Kirkville*



ROBERT LONGWITH *Kirkville*

FORD LOWCOCK *Powersville*

HELEN LOWELL *West Scarboro, Me.*



Juniors



ROBERT LUCKHARDT *Searsdale, N. Y.*
 JUNE MARTIN *Kirksville*
 SAM MATHENY *Tampa, Fla.*



MARY LOU MELSON *Bethel*
 PAUL McDONALD *Kirksville*
 DAVID MCGRAW *Baldwin*



BARBARA McREYNOLDS *Kirksville*
 NANCY MONCRIEF *Kirksville*
 BETTY MOORE *Merico*



WILLETTE MUFF *Allana*
 J. D. NICHOLS *Kirksville*
 ROTH NOEL *Lucerne*



JOHN NORMILE *Edina*
 MARY OFF *Lynn, Mass.*
 ANITA PAGE *Milan*



BOBBIE PARKER *Webster Groves*
 ZOLENE PERRY *Kirksville*
 WARREN PFLUM *Shelbyville*

Juniors

FRANK PICKENS Kirksville

LORRAINE PLETSCH Granville, Ill.

LEA RAINS Keytsville

ANDY REBAK Chicago, Ill.

ROBERT REED Checotah, Okla.

CAROLYN REED Brashear

JAMES REINHARD Pollock

NOBERT REKER St. Louis

WILLIAM RICHARDSON Jamesport

DONALD SANDERS Kirksville

RODRIGO SAENZ Heredio, Costa Rica

MARIE SARGENT Bonne Terre

SARA LOU SCHROCK Browning

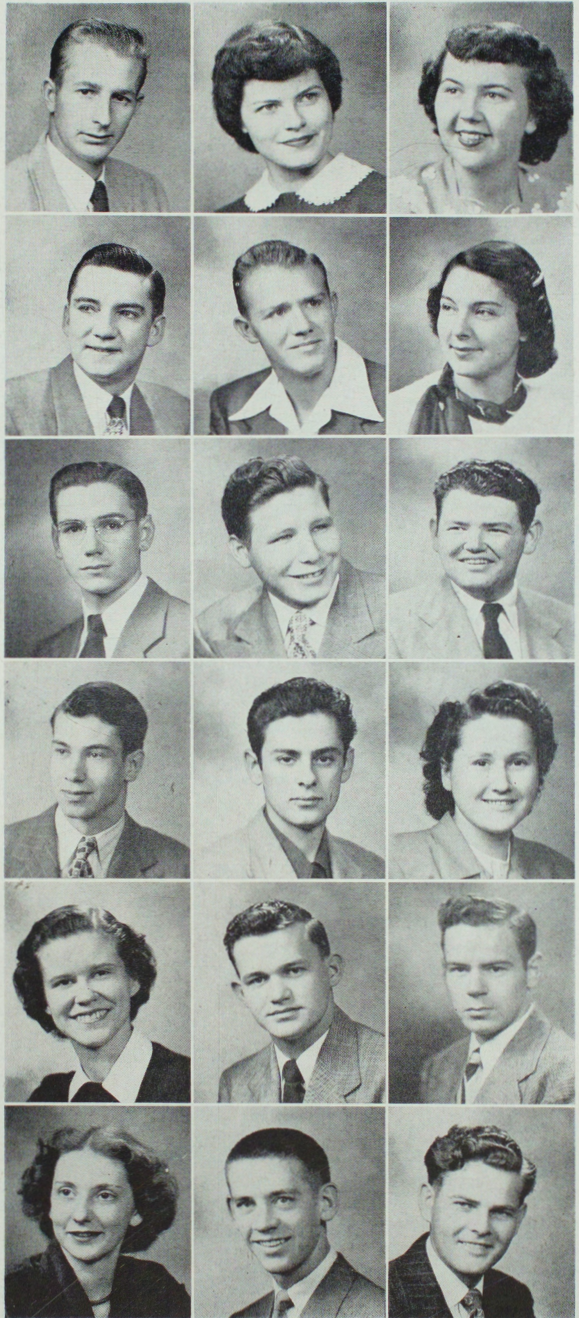
HERBERT SELBY Belhany

DON SHIPPEE Chariton, Iowa

DONNA SIEGLE Kirksville

JAMES SIEHL Cincinnati, Iowa

EDWARD SIGHTS Linneus



Juniors



STALEY SLAWSON *Vincennes, Ind.*

GERTRUDE SMITH *Edina*

MARJORIE SMITH *Hannibal*

WANDA SMOCK *Shelbyville*

WESLEY SPARKS *Hurdland*

ELIZA SPROUL *Paris*

JOHN STARK *Brookfield*

DORABELLE STEELE *Milan*

NORMA STEVENS *Bucklin*

MARGARET STEWART *Chillicothe*

ROBERT STEWART *Sumner*

MARGARET STILLA *Kirksville*

MARY MARGARET SWAITHES *Nettleton*

NANCY THOMAS *Moberly*

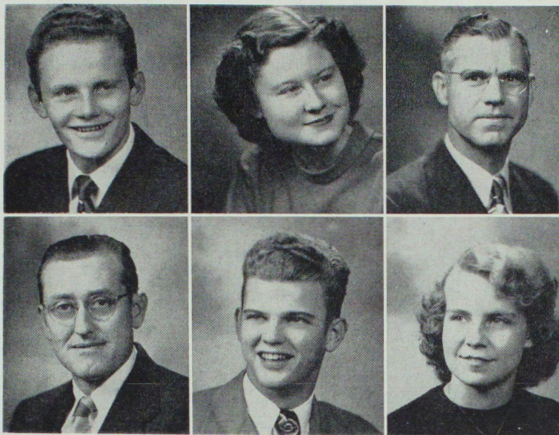
ROBERT THOMAS *Fulton*

BOYD TIBBLES *Jamesport*

WILLIAM TODD *Osgood*

LILLIAN TOMITA *Wailuku Mayi, Hawaii*

Juniors



WILLIAM TRAYLOR *Brashear*

SUZANNE VAUGHN *Lancaster*

VAN VENCIL *Kirksville*

GEORGE WADDILL *Kirksville*

JACK WEBER *Maywood*

WILLA LOU WILCOXON *Kirksville*

Sophomores

1st Row: LOUIS AGNEW, St. Louis; ROBERT APPLEBY, Melbourne; BETTY BAGLEY, Pleasanton, Ia.; WAYNE BALL, Kirksville; JACQUELINE BARNETT, Cumberland, Md.; MARIETTA BARTLETT, Chillicothe

2nd Row: GENE BARTOW, Browning; ALLEN BEHNKE, Sandusky, O.; ARLENE BETTIS, Seymour, Ia.; ROGER BIESEMEYER, New Franklin; CHARLES BLACKWELL, Mt. Vernon; WAYNE BOURN, Memphis



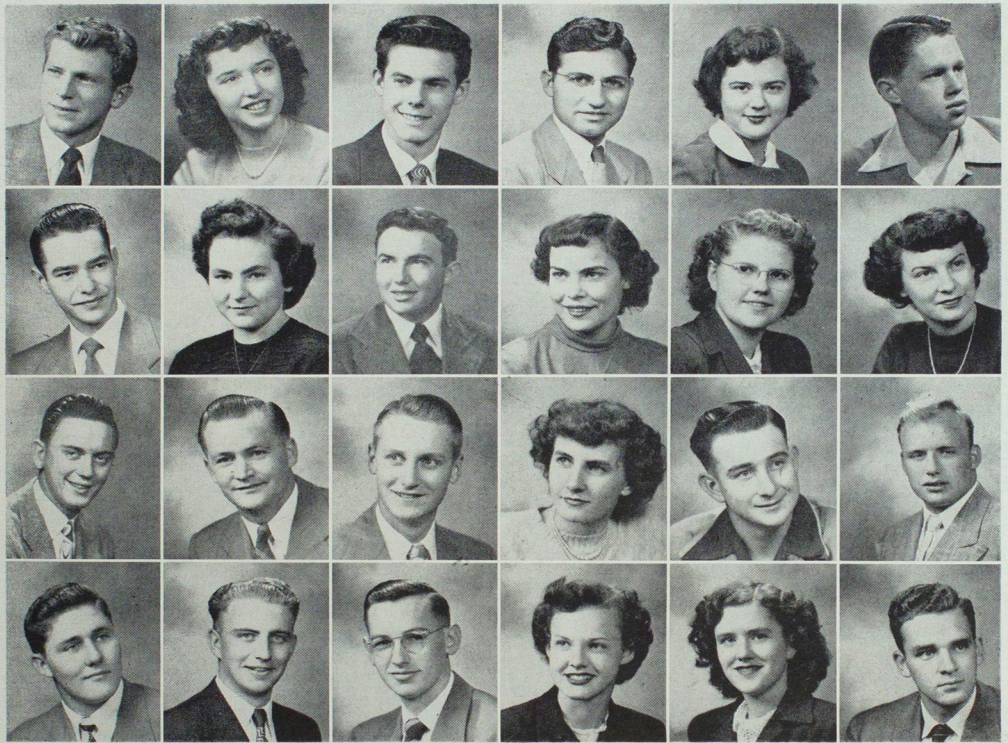
3rd Row: OLIN BRADSHAW, Kirksville; H. O. BROUGH, Newtown; ROBERT BROWN, Ewing; ROY BROYLES, Princeton; WAYNE BURGHOPFER, Centerville; LEAH BURKHARDT, Macon

4th Row: ALFRED BURROWS, Kirksville; DONNA BURTON, Moberly; GERALD CHANEY, Kirksville; GENE CHOLETT, Lancaster; PAT CLARK, Marshall; HAROLD COFFMAN, Milan

Sophomores

1st Row: WILLIAM COMMACK, High Ridge; BETTY COUCH, Kirksville; JOHN COX, Bevier; RAYMOND CRIST, New Boston; JANICE DAIL, Linneus; DWIGHT DE ROSEAR, Memphis

2nd Row: JAMES DRAKE, Memphis; IRENE DRENNAN, Kirksville; WILLIAM EYMAN, Kbox City; JEANNE FENIMORE, Seymour, Ia.; WANDA FILKINS, Kirksville; SHIRLEY FINNEY, Laclede



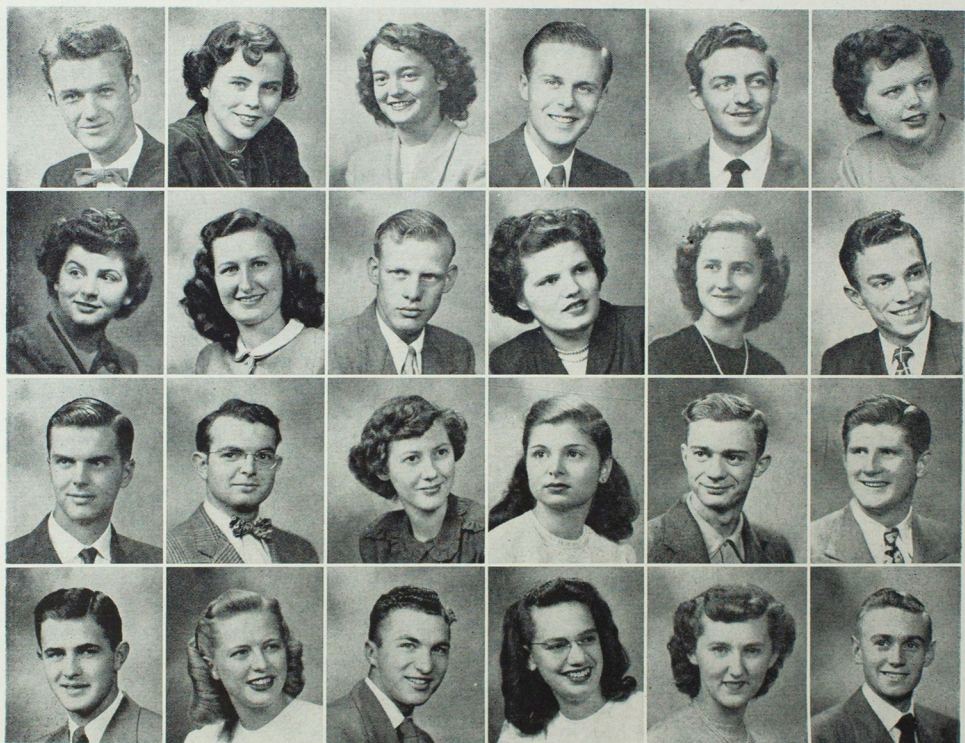
3rd Row: JEROME FLYNN, Marcelline; GLENN FRENZEN, Kahoka; OREN GALE, Moulton, Ia.; MARY ELLEN GILSTRAP, Kirksville; ROLAN GOOCH, Purdin; JAMES GOURLEY, Mountain Grove

4th Row: GENE GREAR, La Plata; LAVERNE GREGORY, Kirksville; DENZEL GUNNELL, Memphis; KATHLEEN GUYER, Purdin; NELLIE HALL, La Crosse; FRED HANES, Kirksville

Sophomores

1st Row: VIRGIL HOEMANN, Washington; MARJORIE HAM, Bachelor; LAURA HULSE, Rensselaer; DAVID JANSON, Excelsior Springs; LLOYD JOHNS, St. Louis; MARY JOHNSON, Keytesville

2nd Row: JEANNE JONES, Birmingham, Ia.; MARY LOU JONES, Kirksville; ANDREW JORGENSEN, Green Castle; ATHENA KACHULIS, Kirksville; ROGENE KENNEDY, Brookfield; THOMAS KESSON, Omaha, Nebr.



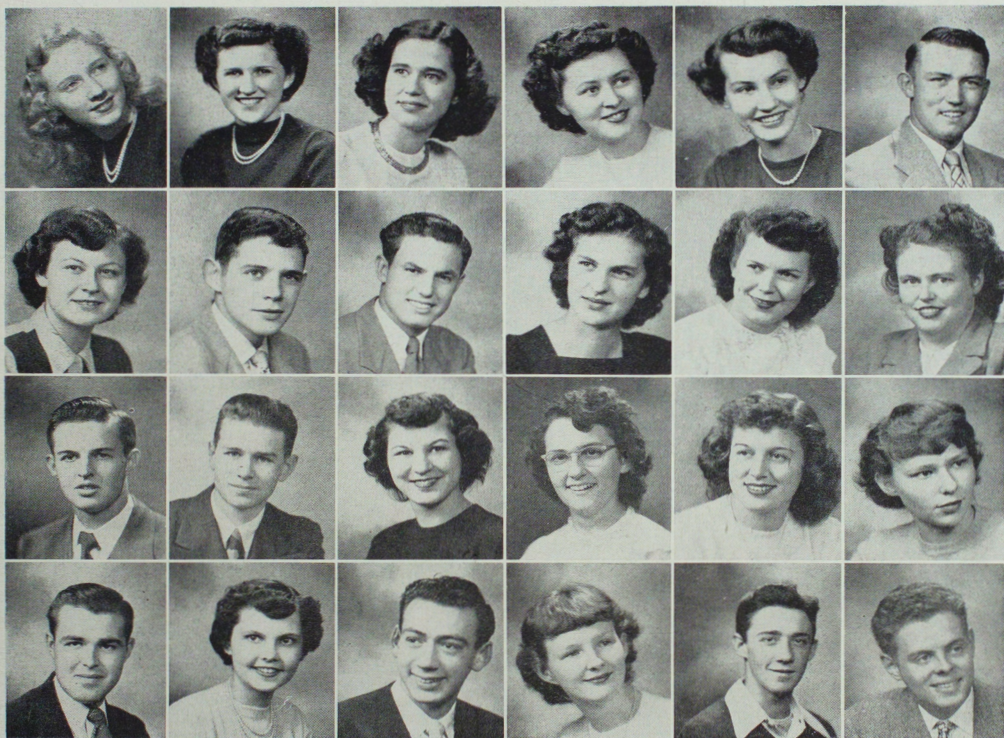
3rd Row: EDWARD KING, Adabel; ROBERT KNEELAND, Chariton, Ia.; AILEEN KRIGBAUM, Hannibal; GLORIA LANZA, Kirksville; AL LEATHERS, Macon; JACK LEHR, Scarsdale, N. Y.

4th Row: WILLIAM LEIBHART, Trenton; ROMA LYNN LIGGETT, Seymour, Ia.; DONALD LINHART, Browning; ELSIE LINKE, Jonesburg; MARY LOVELACE, Vandalia; ROBERT LYNCH, Ethel

Sophomores

1st Row: EDITH MADDOX, Centralia; JOAN MADORIN, Kirksville; MARJORIE MARSHALL, Canton, Ill.; PAT MCANULTY, Edina; ELEANOR MCCOLLUM, Waialuo, Oahu, Hawaii; GENE McCLANAHAN, Atlanta

2nd Row: JEAN MCCOLLOM, Unionville; RONALD MCCOLLOM, Kirksville; BILL McCRARY, Hamilton; JEAN McELHANEY, Callao; JOYCE MICKEY, Seymour, Ia.; FREDA MILLER, La Plata.



3rd Row: C. A. MOORE, Herculaneum; FRANCIS McCABE, Kirksville; GARNITA MORREY, Ft. Madison, Ia.; MAURINE MYERS, Memphis; CLAUDELLE NICOL, Kirksville; EVELYN PARKS, St. Louis

4th Row: NOVIN PIERSON, Atlanta; MARGARET PLEYER, Salisbury; JOHN POTTER, Ottumwa, Ia.; MARY REED, Williamsburg, Ia.; DALE REESMAN, Boonville; ROBERT REIDMEYER, Hunnewell

Sophomores

1st Row: DAVID RISSLER, Seymour, Ia.; ANNA SALLADY, Kirksville; GILBERT SARGENT, Alexander; ELEANOR SCOTT, La Grange; ISABELLE SEBBEN, Seymour, Ia.; BETTY SHELTON, Livonia

2nd Row: MARY SHIRLEY, Kirksville; ELMER SPEARMAN, Keokuk, Ia.; MAY SPEARMAN, Keokuk, Ia.; QUEEN SPENCER, Brookfield; JAMES STEINMILLER, Kirksville; MAURICE STEWART, Eldon, Ia.



3rd Row: JEANNE SWAYZE, Almont, Mich.; DELPHA SYLER, Brunswick; MARY LOU TARPENING, Brookfield; FORREST THOMPSON, Ottumwa, Ia.; CARLYLE WALKER, Green Castle; COLENE WARD, Kirksville

4th Row: DAVID WATSON, Kirksville; PAT WATTERSON, Milan; FRANK WAY, Chillicothe; RICHARD WINSLOW, Kirksville; JOHN WOHLSLAAGER, St. Louis; GEORGE WORKMAN, Lewistown

Freshmen

1st Row: DONALD ADAMS, Quincy, Ill.; PAULINE ADAMS, Greentop; REVA ANDERSON, Queen City; ROSEMARY ANDERSON, St. Catherine; BURL ARNOLD, Lewistown; ANNA RUTH BAILEY, Kirksville; WINIFRED BAILEY, Kirksville

2nd Row: CAROL BAKER, Elsberry; JOHN BEALMER, St. Charles; LOUISE BEAUCHAMP, Annada; DONNA BELT, Atlanta; ROBERT BENNET, St. Louis; JERRY BINGHAM, Kirksville; NORMA BLAKELY, Revere

3rd Row: FRANCES BOLEY, Kahoka; SHIRLEY BORRON, Atlanta; IVES BOWDEN, Brookfield; HERB BOWLING, Bloomfield, Ia.; DIXIE BOWYER, Brookfield; MARY BROOKHART, Lewistown; PAT BROTHERS, Center

4th Row: MARTHA ANN BROWNING, Memphis; DONNA BUNCH, Marceline; RUTH BUNDREN, Bevier; DOROTHY BURCHETT, Green Castle; GLEN BIRCHFIELD, Maywood; EDWARD BURKHART, Macon; HERSCHEL BURRIS, Kirksville



Freshmen

1st Row: GUY BURTON, E. St. Louis, Ill.; CAROLYN CALHOON, Hannibal; MARGARET CALLAHAN, Arbela; JOETHA CALLISON, Chariton, Ia.; BESSIE CALVERT, Lufay; GRACE CAMPBELL, Novelty; JERRY CAMPBELL, St. Joseph

2nd Row: ELAINE CARMEAN, Ft. Madison, Ia.; MARY CARTER, Eldon, Ia.; RALPH CHANEY, La Plata; CONNIE CHAPMAN, Chillicothe; EDWIN CHAVERRI, Heredia, Costa Rica; INA CLAYPOOLE, Macon; DOROTHY CLEMONS, Linneus

3rd Row: CAROLYN CLINE, Granger; MARY LOU CLOUGH, Kirksville; FLOYD COLBERT, Bowling Green; BRUCE COLLINS, Worthington; MERVIN COLLINS, Kirksville; HAZEL CORBIN, La Plata; REVA CRAGAN, Center

4th Row: BEVERLY CRAGG, Kirksville; MARY CRAIG, Macon; JANE CRUMPACKER, Pollock; PEGGY CULLEN, La Plata; WILDA DANIEL, Green Castle; JERRY DAVIS, Kirksville; W. D. DAVIS, New Boston



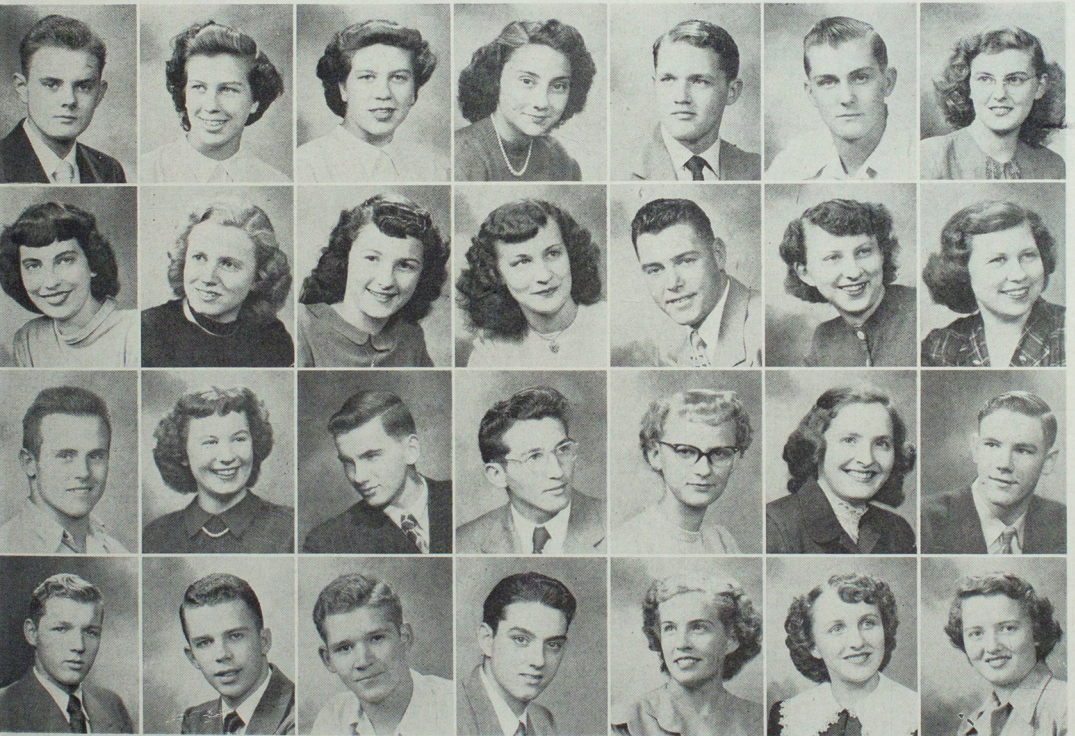
Freshmen

1st Row: EDWIN DAWSON, Paris; JOAN DEAN, St. Louis; JUNE DEAN, St. Louis; RUTH DEARING, Taylor; NEIL DERRICK, Curryville; GERALD DEWITT, New Sharon, Ia.; HAZEL DOUGLAS, Anabel

2nd Row: JOAN DOYLE, Kirksville; LOLA DUNN, Auxvasse; LOIS DYE, Unionville; MAXINE EDWARDS, Bowling Green; CHARLES ELAM, Queen City; CARROL ELSEA, La Plata; JO ANN ENGLEMAN, Meadville

3rd Row: CHARLES FINNELL, Chedok, Ill.; ANITA FORD, Kirksville; GLENN FUGATE, Memphis; CLARK GARNER, Leonard; SHIRLEY GIBSON, Hannibal; GLORIA GILLILAND, Wapello, Ia.; DENNIS GLEASON, Kirksville

4th Row: ED GOEKE, Kirksville; LARRY GORDON, Kirksville; JOHN GOURLEY, St. Louis; DICK GRAHAM, Waukegan, Ill.; BEVERLY GREGERSON, Bloomfield, Ia.; MARY GRIFFITHS, Farber; GARNETT GRIMM, Bloomfield, Ia.



Freshmen

1st Row: HERMAN HAFNER, Hannibal; NORMAN HAHN, Brookfield; JOAN HALL, Allerton, Ia.; WILFRED HALL, Coffey; EVA HARDIN, Welch, W. Va.; RITA HATFIELD, Gorin; LORNA HAWES, Keokuk, Ia.

2nd Row: CARL HAWKINS, Bloomfield, Ia.; J. C. HAWKINS, La Plata; CLIFFORD HERRIN, La Plata; MARY HERSKA, Hannibal; MARILYN HESSE, Wyaconda; NEIL HOLMES, Lineville; JEANETTE HORNOCKER, Allerton, Ia.

3rd Row: AL HOWARD, Oakwood; RUTH HUFFINE, Galt; GLEN HULL, St. Joseph; MARION HUNTER, Bowling Green; ROBERT HUNTER, La Plata; WILLA HUNTSMAN, Macon; AMONLEE HUSTED, Kirksville

4th Row: CLIFFORD IVERS, Kirksville; THEDA JENKINS, Auxvasse; IRENE JOHN, Huntsville; HELEN JOHNSON, Queen City; MARJORIE JOHNSON, Keytesville; ANN JONES, Columbus, Ga.; BETTY JONES, Keokuk, Ia.



Freshmen

1st Row: BONNIE JONES, Livonia; FLETTA JONES, Bethel; GALE JONES, Ethel; GLENNIS KERR, Lufay; GIL KIRSNER, Medill; BETTY LAMBERT, Purdin; JEAN LANDMAN, Keokuk, Ia.

2nd Row: EVELYN LAUDWIG, Kirksville; DONNA LAWSON, Kirksville; DONALD LEDFORD, Green Castle; IRWIN LIGHT, Trenton, N. J.; EVELYN LINDBERG, Kirksville; MARY JANE LINDER, Kirksville; NELLIE LOE, YATTO

3rd Row: ANNA MACK, Trenton; BONNIE MARTIN, Kirksville; CHRIS MARTIN, New Hartford; LOREEN MARTIN, Kirksville; MARY CAROLYN MARTIN, Kirksville; ROWENA MATTHEW, Cincinnati, Ia.; BERTHA McCLASKEY, Callao

4th Row: DOROTHY McCORD, Bloomfield, Ia.; RUBY McELHANEY, Callao; NADINE McFARLAND, Baring; JEAN McGREGOR, Kirksville; IVAN McINTOSH, Callao; JOAN McKEE, Macon; NORMA McKINNEY, Kirksville



Freshmen

1st Row: JOAN MELVIN, Coatsville; ELAINE MEYER, Kull, Ill.; JOLENE MILLER, Greentop; MAURICE MILLER, Kirksville; MILTON MILLER, La Plata; WAYNE MILLER, Novinger; PAT MOGG, Hamilton

2nd Row: LEONA MONTGOMERY, Novinger; MYRTLE MONTGOMERY, Kirksville; BARBARA MOORE, Osseo, Minn.; DONALD MOORE, Kirksville; JEAN MOORE, Kirksville; DON MOZINGO, Hurdland; MARY MULFORD, Kirksville

3rd Row: LAURA MULNIX, Bethany; MARY MURPHY, Humphreys; PAUL MUSGRAVE, Unionville; EUGENE MYERS, Palmyra; JOHN NEWMAN, Kirksville; DUANE NORMAN, Kirksville; BRUCE NORMILE, Edina

4th Row: GLENN NOVINGER, Kirksville; CAROLYN PAGE, Milan; FRANCES PARCELLS, Kirksville; PAULO DE PAULA, Espirito Santa, Brazil; IDA PERRIN, Callao; ROBERT PISTER, Seymour, Ia.; LOUIS PLAGAKIS, Quincy, Ill.



Freshmen

1st Row: ANNA LYNN PLENGE, Memphis; GEORGE POHLKAMP, Quincy, Ill.; RAY POHLPETER, Ft. Madison, Ia.; MARY ANN POWELL, Montgomery City; MILT PROBASCO, Unionville; ERNEST PRUETT, Wyacodda; SARAH PULIS, Kirksville

2nd Row: JUANITA QUIGLEY, Greentop; RICHARD REYNOLDS, Unity, Me.; JOSEPH RHOADS, Kirksville; ROBERT RHODES, Center; DORIS RICE, Ethel; HELEN RIDDER, Wartenton; MARY RIMER, Edina

3rd Row: ESTELLA RITCHEY, Gibbs; JAMES ROBINSON, Palmyra; ROBERT ROCKHOLD, Memphis; ANN SUE ROGERS, Brashear; LOIS ROGERS, Nashville, Tenn.; ROBERT ROMINE, Chariton, Ia.; DOREEN ROSS, St. Louis

4th Row: MARTHA ROY, Kirksville; NORMA RUSSELL, Brookfield; ETHEL SARGENT, Meadville; ROSE SCHIEFER-DECKER, Ft. Madison, Ia.; VIRGINIA SCHNELBACKER, LaGrange; MARY SCHOWALTER, Chariton, Ia.; ACTON SHELTON, St. Louis



Freshmen

1st Row: RICHARD SHEPHERD, Seymour, Ia.; PAT SHORE, St. Louis; SHIRLEY SIEGLE, Kirksville; FRANK SLOAN, Kirksville; JOHN SMATHERS, Clarion, Pa.; BETTY SMITH, Mt. Pleasant, Ia.; DOUGLAS SMITH, Seymour, Ia.

2nd Row: ODETTA SMITH, Brookfield; OTTO SMITH, Brookfield; LOIS SPENCER, St. Louis; WANDA ST. CLAIR, Kahoka; RUTH STEVENS, Mexico; WAYNE STEVENSON, Columbia, Ia.; HAROLD STEWART, Overland Park, Kan.

3rd Row: PATSY STORM, Kirksville; FREDA STRATE, Palmyra; MARION STROHMAN, Chariton, Ia.; BETTY STUART, Brookfield; DONNA THOMAS, La Plata; VENITA TILLER, Center; JUDY TODD, Osgood

4th Row: SHIRLEY TROUTMAN, Hannibal; JACK TROUTNER, Eolia; SHIRLEY TRUITT, Kirksville; DAVID TURNBULL, Kirksville; IRENE URIARTE, Mexico; JAMES VALBRECHT, Palmyra; SALLY VAN DINE, Powersville

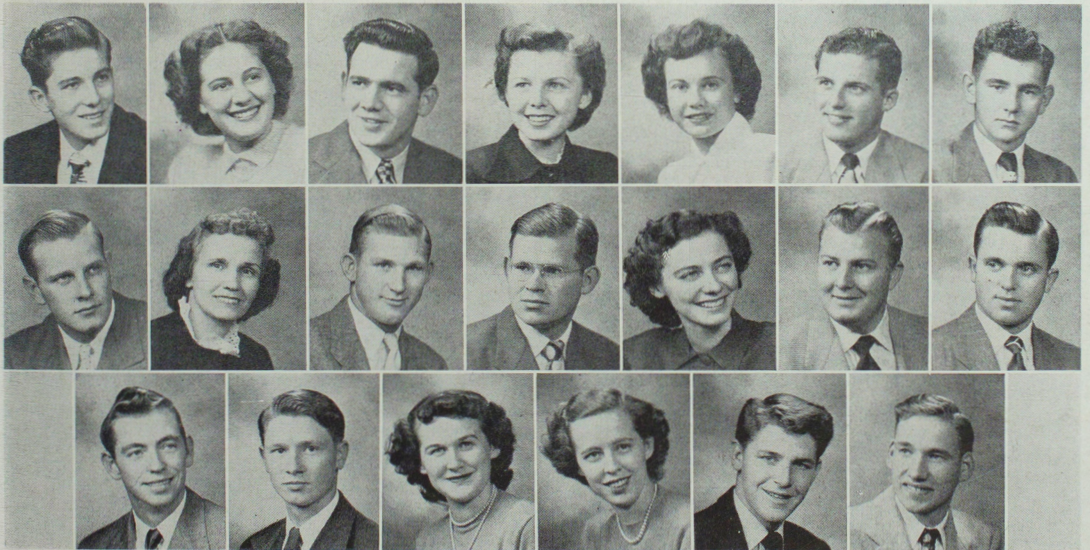


Freshmen

1st Row: BILL VAN NORTH, Wyaconda; MARY LOU WAIT, La alata; WILLIAM WATERMAN, Center; JEANINE WATSON, Lucerne; MARY JANE WEYLAND, Boonville; FRANK WAYMAN, Kirksville; KENNETH WERR, Shelbyville

2nd Row: KEITH WESCOTT, Louisiana; ELSIE WEST, Kirksville; CARROL WESTFALL, Brookfield; BERTIN WHITE, Madison, Ill.; YVONNE WILGUS, Atlanta; RUDOLPH WILLIMAS, St. Louis; PAT WILSON, Milan

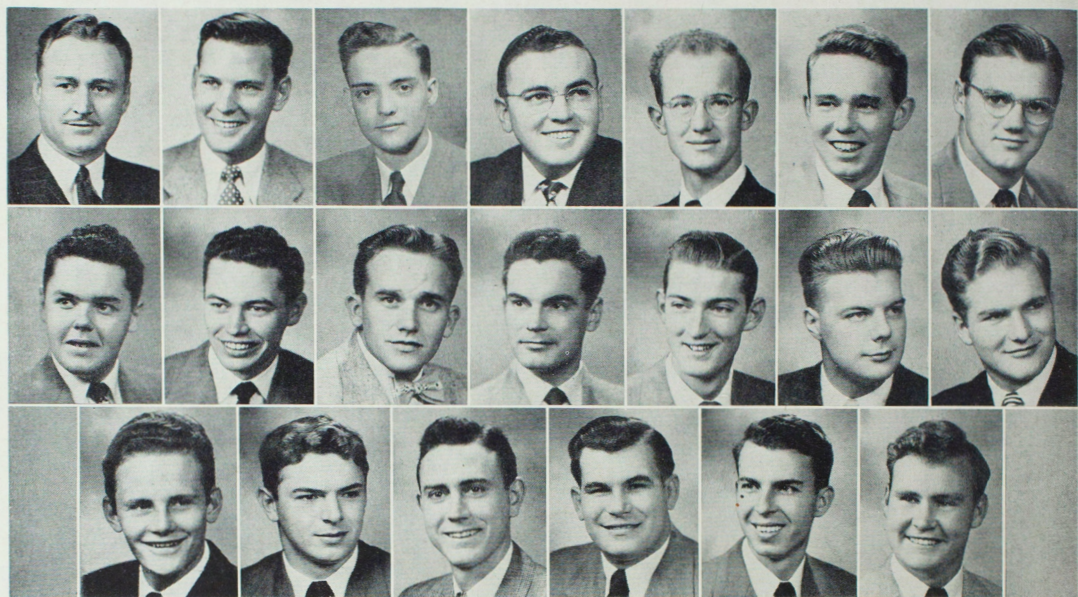
3rd Row: JOHN WISS, High Hill; BERNARD WOLFORD, Ethel; FRITZI WORRELL, New Hartford; MARJORIE WRIGHT, Gorin; MICK YEOMANS, Cedar Hill; MARVIN YOCUM, Bynumville





GREENWOOD DEMONSTRATION SCHOOL

Blue Key



ROBERT MCKINNEY, *Sponsor*; CARL BENNETT, GORDON COLLETT, CHARLES FUGATE, *Junior Regional Director*; JOHN GOEKE, *Vice-President*; EDWARD GRIM, GORDON GROBER, WARREN HAMILTON, RICHARD JOHNSON, MERL KUMM, STEPHEN MELVIN, WALLY SCHNEIDER; DONALD SCRIVEN, *Secretary*; JAMES STOOKEY, *President*; WILLIAM TRAYLOR, DONALD TRUITT, ROBERT UNBARGER, THEODORE VRENICK, DONALD WALKER, *Treasurer*; JACK WELLS, *Not Pictured*: JACK ACUFF.

Blue Key, National Honorary Service fraternity, is an organization of men selected for outstanding qualities in scholarship, leadership in school life. The active membership in the fraternity is limited to twenty men. The men are selected for membership by active members of the fraternity and approved by a faculty committee and the national office.

Blue Key's motto, "Serving, I Live" is the keynote of the fraternity's activities. Each year members of Blue Key plan and carry out a number of projects for the student body and administration. Included in this list is the annual Homecoming, publication of the Student Directory, "I Am An American Day" ceremonies for students reaching their twenty-first birthday, serving as mentors for the incoming freshman, helping during the Senior Day activities and any other project which they feel would be of benefit to the students of the college.

The organization is beginning its 25th year on this campus. Mr. Robert McKinney has been sponsor for the last several years.

Cardinal Key

Cardinal Key, sister organization to Blue Key, is a national honorary service sorority which recognizes achievement in scholarship and extra-curricular activities. The organization attempts to advance religion, patriotism, and service by affording training for leadership on the campus. It stresses character development by application of the cardinal virtues of life.

Membership in Cardinal Key is held by girls who have at least sixty hours credit and close to an "S" average scholastically. Its membership is restricted to twenty active members. However, the organization can take in honorary members. This year, Alice Kajiwara, Mia Snel, Farida Fallah, Lillian Tomita, and Leona Karch were given honorary membership in the organization.

The members of Cardinal Key participate in any activity through which they can serve the campus. Each year the sorority awards a scholarship to an outstanding student, serves as ushers for civic and college functions, and sponsors the traditional song fest held each summer.

When the new residence halls were opened the members of Cardinal key presented a painting to be hung in the main lounge of Blanton Hall.



Seated: KARCH, MISS SLEMONS, KAJIWARA, SMITH, GARES, SHEARER, LEACH, WELLMAN, TOMITA, SWAITHES, MISS WADE

Standing: PAGE, STEWART, KIMBRELL, VAUGHN, SNEL, MARTIN, KING, BOWEN, LAMBDIN, OLSON, LOVE, DEMING, PERRY, SCHROCK, FALLAH

Alpha Phi Sigma

NATIONAL HONOR FRATERNITY

Members in this organization are valedictorians or salutatorians of their high school graduating class or are college students who . . .



REVA ANDERSON

ROBERT BAILEY

JEANINE WATSON

LOIS BEGER

NORMA BLAKELY

ROBERT BROWN

SUE BRUMMALL

DONNA BUNCH

DONNA BURTON

DOROTHY CLEMANS

CAROLYN CLINE

MARY LOU CLOUGH

MAYSEL CRIST

LOIS DEMING

GILBERT DEMRY

IRENE DRENNAN

LOIS DYE

WILLIAM EYMAN

SHIRLEY FINNEY

GLEN FUGATE

MARY ISABEL GRIFFITHS

KATHLEEN GUYER

JOAN HOOK

IRENE JOHNS

LLOYD JOHNS

HELEN JOHNSON

ANDREW JORGENSEN

Alpha Phi Sigma

NATIONAL HONOR FRATERNITY

... have maintained an "S" average for at least two consecutive quarters. Alpha Phi Sigma is sponsored by Dr. Hans Hagemann, Language and Literature.

RUTH JORGENSEN

PAUL KAYE

GEORGE KELSO

WANDA KIMBRELL

MARYLIN LAMB DIN

BETTY LAMBERT

EMILENE LEHR

VIRGINIA LOVE

MARY LOU LOVELACE

WAYNE MILLER

MARY JANE MURPHY

SHIRLEY OLSON

ANITA PAGE

RUTH PENROD

MARY ANN POWELL

JUANITA QUIGLEY

JAMES REINHARD

SARALOU SCHROCK

GERTRUDE SMITH

MARGORIE SMITH

FREDA STRATE

WILLIAM SLICKER

DELPHIA SYLER

WILLIAM TRAYLOR

SUZANNE VAUGHN

FRANK WAY

HARLENE WELLMAN



Sigma Zeta



1st Row: LEAH BURKHART, DONNA BURTON, HARLENE WELLMAN, DOROTHY ALLEN, DON WALKER

2nd Row: VERA GARES, VIVIAN GRUBB, BOB BAILEY, HAROLD HILL

3rd Row: SAM MATHENY, FORD LOWCOCK, CHARLES BLACKWELL, JOHN MORRIS

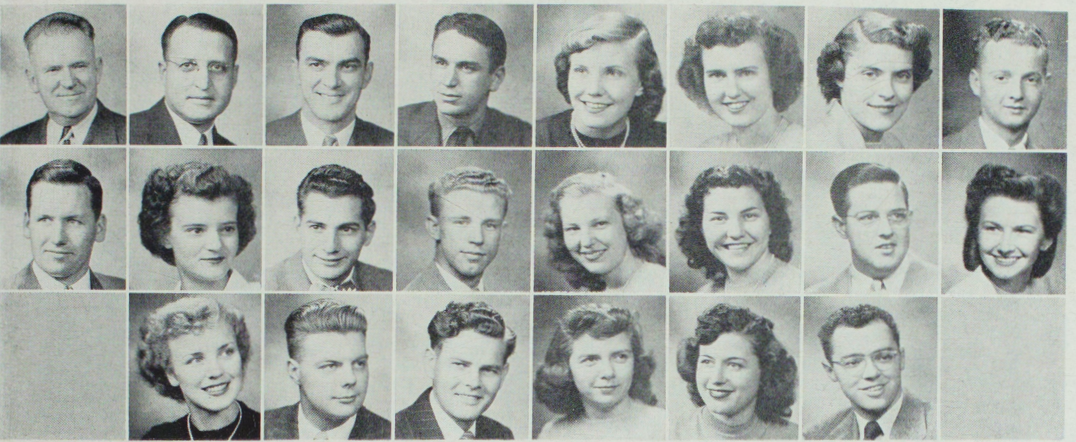
Pi Kappa Delta

1st Row: MARY SHIRLEY, BECKY HAWKEY, MARY JANE MURPHY, LOIS DYE, SHEROD COLLINS, *Sponsor*

2nd Row: BRUCE NORMILE, PAUL ANDERECK, FRED HANES, JAMES STOOKEY, DONALD TRUITT, DON ADAMS



Pi Omega Pi



PAUL SELBY, EDWARD BRAND, CHARLES KAUZLARICH, *Sponsors*; AUGUSTINE, COOK, DRURY, EAGAN, FETCHLING, HORN, HUDSON, MANGIARACINA, MARTIN, MELSON, MOORE, OFF, RIXEY, SCRIVENS, SIGHTS, SMITH, WALKER, WELCH

Pi Omega Pi, national honor society in Business Education, was founded in 1923 at this college by Dr. P. O. Selby, the present sponsor. After 27 years, Alpha Chapter at Kirksville has an active membership of 37. There are nearly 70 chapters of Pi Omega Pi in colleges and universities throughout the United States.

Some of the activities Pi Omega Pi has had this year include a luncheon, travel talks by Dr. Ralph Monay, a canasta party, picnics, and a booth at the all school carnival.

During the winter and spring quarters there were about 20 new members initiated. On March 15 new officers were installed for the spring and summer quarters. They are Dwain Horn, President; Eleanor Eagan, Vice-president; Vera Gares, Secretary; Billy Jean Rixey, Treasurer; Alfred Burrows, Historian; Louis Agnew, Reporter; and Leonard Moore, Editor.

Students having fifteen hours of business education or ten hours of business education and five hours of education and meeting the scholarship requirements are eligible to become members of Pi Omega Pi.

Kappa Delta Pi



Seated: JOHN GOEKE, *Secretary;* MISS BERENICE BEGGS, *Sponsor;* DON WALKER, *President;* GILBERT DEMRY, *Treasurer*

Standing: SHIRLEY OLSON, OPAL LEE, LOIS DEMING, MARJORIE SMITH, VIVIEN GRUBB, VERA GARES, MARILYN LAMBDM, MARILYN WALKER, JOHN MORRIS, MARY SWAITHES, NORMA SHEARER, MAYSSEL CRIST, JOSEPH BUFORD, BEVERLY BLACK, PETER BUBAN

Association For Childhood Education



1st Row: WILLIE WHITSON, *Sponsor;* LEE KARCH, MARY CRAIG, JEANNE FENIMORE, ARLENE BETTIS, GRACE FORD, WILDA DANIELS

2nd Row: ELSIE LINKE, JOYCE MICKY, ANNA PLENGE, ELSIE WEST, DOROTHY CLEMENS, MARJORIE WRIGHT, GARNETT GRIM, NORMA JEAN RUSSELL, GOLDIE BRISTOL, MAYSSEL CRIST, HAZEL CORBIN, CAROL BRENNECKE

Historical Society



INLOE, LIGHT, CRISCO, ADAMS, R. E. SULLIVAN, J. P. AGNEW, LUCY SIMMONS, W. A. BROWNE, SHIRLEY, LEE, REINHARD, PENROD, PAULINE KNOBBS, MARTHA REDFORD, HAWKINS, ELSEA, THOMAS, HALL, LETCH, KAJAWARA, CALHOUN, CLEMENS, THOMPSON, CRAWFORD, PARKS, ANDERSON, DOYLE, SWAITHES, POWELL, TROUTMAN, BUNCH, PLEYER, WOODWARD, BLAKELY, RUSSELL, DANLOVIC, LIGHT, HANES, BRYANT, KELSO, DERRICK, WAGNER, WELLBORN, CALHOUN, MILLER, ANDERCK, LAIR, PFAFF, JOHNSON, MAGGART, MUMMA, MOORE, BOWLING, ROBINSON, JONES

Closely related to the Social Science Division classroom work is the Historical Society which has the honor of being the oldest student organization on the campus. It is sponsored by Dr. Pauline Knobbs. Its present officers are Mary Shirley, president; Warren Lee, vice-president; James Reinhard, secretary-treasurer; Ruth Penrod, reporter.

All faculty members and major students in the division automatically belong to the organization. Other student members are nominated upon recommendation by the faculty members. They are then elected to membership by the members of the society.

Programs of the society are largely of the thought provoking type; however, an occasional social hour is enjoyed by the group.

Thalian Guild And College Players



JOHN GOEKE, *Vice-President*; GORDON GROBER, *President*; WANDA SMOCK, JAMES STOOKEY, BAXTER STINSON, BOYD TIBBLES, DEAN, ADAMS, MABEE, MADDOX, LANZA, BURTON, SIEGLE, TRUITT, MCGREGOR, PARCELLS, DEAN, HOUGHINS, *Treasurer*; KELLY, *Secretary*; GRIFFITHS, PARKS, KIMBRELL, GILLILAND, A. DEMRY, G. DEMRY, KAYE, LONGWITH, TRAYLOR, McREYNOLDS, MARTIN, GILSTRAP, BATES, COLLINS, *Sponsor*

Ellen H. Richards



1st Row: DOYLE, FORD, RAINS, CAMPBELL, JONES
2nd Row: MISS MAGEE, *Sponsor*; SYLER, BOWEN, PAGE, BEGER, BUCKINGHAM, DODGE
3rd Row: BAILEY, GILSTRAP, SWAITHES, NORRIS
4th Row: PULIS, SCOTT, WATSON, KENNEDY, RICHEY, ANDERSON, ELLIS, BOTTS, RUSSEL, STEWART, JORGENSEN, DEMRY

Industrial Arts Club



JOHNSON, CROSS, SPEAK, FUNK, REED, BELLMARD, PICKENS, BUBAN, SPRIGGS, MILLIGAN, HOWARD, BARNETT, FISHBACK, CARTER, SCOVILLE, COLE, *Sponsor*: KETCHAM, VRENICK, HELLYER, JORGENSEN, FRANKLIN, IVERS

The Industrial Arts Club was founded at the Teachers College in 1940 to promote Industrial Arts on a professional status equal to other areas of study, by means of better scholarship, a sound professional attitude, and broad general culture.

To fulfill the purposes of the club, meetings of both a professional and social nature are held every two weeks during the year.

The Club sponsors and participates in many College activities. Three of the outstanding accomplishments of the club during recent years have been:

The construction of a beautiful permanent Christmas display.

The establishment of a yearly Christmas party for Kirksville children.

The construction of two prizewinning Homecoming floats.

Students are eligible for membership in the Industrial Arts Club upon the completion of ten hours on work in Industrial Arts with above average grades.

Agriculture Club



MILLER, SIMMONS, BROUGH, BYERS, ALLEN, *Sponsor*; BLANCHARD, BROYLES, SAENZ, BIROS, SELBY, MEEKS, McCLANAHAN, HUNTER, STARK, FRENZEN, SPRIGGS, LEHR, KETCHAM, T. WARD, BROTEMARKLE, F. WARD, BOYLES

Back on the job the last week of August, Lester Kraft, Don Byers, Max Fountain, Frank and Travis Ward and others set up an eats stand on the pike of the Northeast Missouri Fair grounds. They made nickel coffee, two-bit sandwiches and lots of friends during the four-day program. They also accumulated a tidy sum for the 1949-50 treasury so the Club could eat the remainder of the year. Although this is not mentioned in either the club charter or constitution, tradition has it that this is the eatin'ist organization on the campus with some of the best cooks.

Don Byers and the "Chariton Valley Boys" were on the program of the Northeast Fair one afternoon and adjourned down to the eats stand later to offer some stimulating harmony. In a few minutes the place was swamped and the boys had to quit singing and playing to thin them out. So next day Don fetched his banjo to stir up a little business but the same stampede started again and the boys hired him to quit because the customers wouldn't leave as long as the singing continued.

The annual Haloween "Barnwarmin," a prize winning Homecoming float, and H. A. Kirk's "Aggies," intra-mural basketball team, were some of the high-lights of the work calendar. Card parties, chili suppers, and a dinner program in the new cafeteria, helped to keep the wives and dates interested.

Agriculture Club

Frank Fechtling, program chairman, sure knew his cooks when he turned that part over to Spriggs and Goucher with Frenzen on the buying end.

Van Eitel, former club member furnished one of the top programs of the year with colored film and a lecture on his experiences in Europe last summer while representing Missouri 4H clubs as an exchange student.

Again the Agriculture Club helped sponsors Blanchard and Allen conduct the fifteen FFA and Agriculture Northeast Missouri district contests held as a part of the 1950 Northeast Missouri High School Festival with approximately fifty schools represented during the two days of judging.



Alpha Phi Omega



DELBERT MADDOX, *Sponsor*; DWIGHT DE ROSEAR, CHARLES FUGATE, EVERETT GIBSON, TODD GIGLIOTTA, RUSSELL GILSTRAP, EDWARD GRIM, GORDON GROBER, WARREN HAMILTON, JACK KELLY, THOMAS KESSON, HUGH KETCHAM, MERL KUMM, ROBERT LUCKHARDT, C. J. MOORE, STANLEY READ, HERBERT SELBY, BILL SPEAK, BAXTER STINSON, JAMES STOOKEY, BOYD TIBBLES, DON TRUITT, JACK WELLS

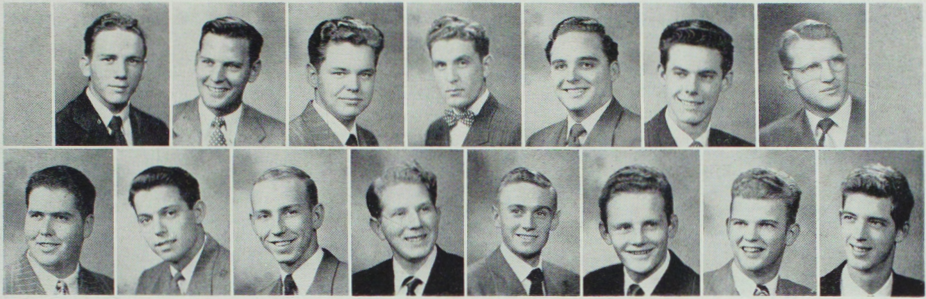
The greatest mark of distinction enjoyed by the chapters and brothers of Alpha Phi Omega lies in the basic purpose of our fraternity—Service. Without vital, important, influencing service we are but another organization. By concentrating our efforts toward the goal of unselfish service envisioned by our founders, we become a dynamic force in the life of each campus, community, and our nation.

1949-50 have been recognition years on the campus of the Teachers College. Having a membership of 41, APO has served in its four fields of Service; School, Community, Nation, and Boy Scouts. Breaking down this we see—Blood Bank, Cloak rooms, March of Dimes, Scout basketball benefit and many other smaller projects.

Our few socials have been overwhelming successes. Next year we are looking forward to more SERVICE on the campus.

With the aims of Leadership, Friendship and Service, APO marches on.

Alpha Phi Omega



ANDERCK, C. BENNETT, B. BENNETT, BOURN, EROUGH, COX, J. DAVIS, D. DAVIS, FOX, GOOCH, LIGHT, LYNCH, TRAYLOR, WEBER, WOHLSCHLAEGER

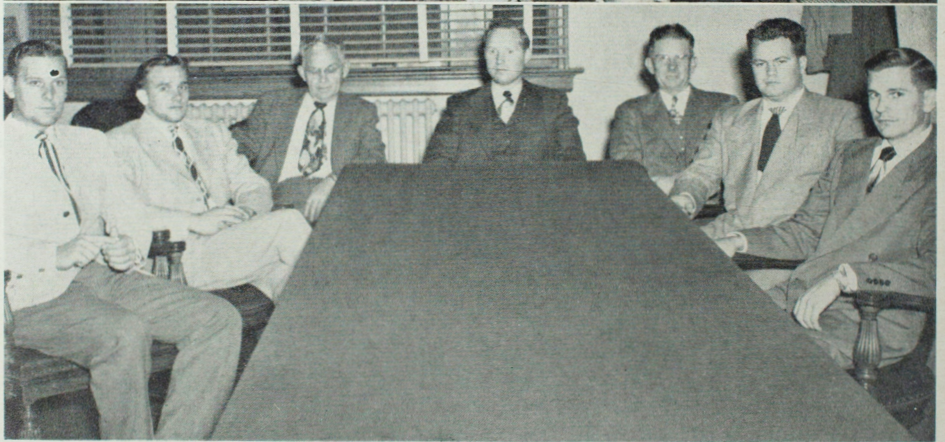
Center: Spring banquet; Delbert in a casual pose. *Upper Left:* APO Smoker . . . Why procrastinate? . . . Mr. "Key" Fugate and other Card Sharps . . . Bread Line . . . Business, strictly business . . . We pose for identification: Homecoming . . . Wheel—note the halo. (Copy by J. R. Stookey)



Pan Hellenic Council

Standing: JEANNE JONES, BLANCHE MERCER, SUE WARD, MARIBEL NORRIS, SHIRLEY FINNEY, MARTHA JAMES, COLETTE CADY.

Seated: BARBARA DANIELS, *President;* JEAN LEACH, *Vice-President;* MELVA RAE MARTIN, *Sponsor;* SHIRLEY OLSON, *Secretary;* WINIFRED KIMLER, *Treasurer*



Inter Fraternity Council

CARL BENNET, Sigma Tau Gamma; MERL KUMM, Sigma Tau Gamma; JOHN GOETZE, *Sponsor,* Sigma Tau Gamma; DR. JOHN AGNEW, *Faculty Sponsor;* OTHO BARNETT, *Sponsor,* Phi Sigma Epsilon; CLYDE WILLIAMS, Phi Sigma Epsilon; WILLIAM MATTHEWS, Phi Sigma Epsilon

A History Of Campus Sororities And Fraternities

Among the many organizations on the campus of the Northeast Missouri State Teachers' College, are the four Social Sororities and the two Social Fraternities.

Pi Kappa Sigma Sorority was founded at Michigan State Normal College, Ypsilanti, Michigan on November 17, 1894. A group of home economics majors at the State Teachers' College, Kirksville, petitioned the national office for entrance and in 1924 became Pi chapter of the national sorority Pi Kappa Sigma that is at present organized on this campus.

Sigma Sigma Sigma Sorority was founded at Virginia State Normal School Farmville, Virginia on April 20, 1898. In 1915 the local sorority of Sigma Delta Chi became Mu chapter of the national organization of Sigma Sigma Sigma that is at present active on this campus.

Alpha Sigma Alpha Sorority was also founded at Virginia State Normal School, Farmville, Virginia, but just a little later on November 15, 1901. In 1914 the local sorority of Kappa Theta Psi petitioned and was accepted as Alpha Beta chapter of the national sorority of Alpha Sigma Alpha that is active now on the campus at Kirksville.

Delta Sigma Epsilon Sorority was founded on September 28, 1914 at Miami University Teachers' College, Oxford, Ohio. In 1921 a group of 13 girls petitioned the national office for entrance and became Iota chapter of the national organization of Delta Sigma Epsilon now active on the campus.

Phi Sigma Epsilon Fraternity was founded at the Kansas State Teachers' College, Emporia, Kansas in February of 1910. At Kirksville, the local fraternity of Sigma Delta Tau, three years old at the time, petitioned the national office for entrance and in 1926 became Gamma chapter of the national organization.

Sigma Tau Gamma Fraternity was founded at the Central Missouri State Teachers' College, Warrensburg, on June 28, 1920. The local fraternity of Phi Lambda Epsilon, at the time already 29 years old, after petitioning the national office, became, in 1921, Beta chapter of Sigma Tau Gamma, the national organization that is active on the State Teachers' College campus today.

Alpha Sigma Alpha



M. ELLEN BATES, LOIS BEGER, AZALEA BELT, BEVERLY BLACK, SUE BRUMMALL, WILLIE CHESTER, MAYSSEL CRIST, CAROL FUNK, JEANNE JONES; ANN KING, *Secretary*; JEAN LEACH, *President*; EMILENE LEHR, *Vice-President*; MARY LEHN, JUNE MARTIN, BLANCHE MERCER; GARNITA MORREY, *Treasurer*; PAT PARSONS, BOBBIE PARKER, LORRAINE PLETCH, BILLIE JEAN RIXEY, NORMA SHEARER, QUEEN SPENCER, MARY TARPENING, WILLA LOU WILCOXON

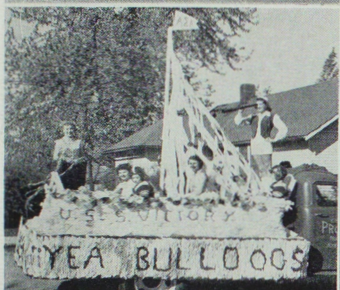
As the '49-'50 school year draws to a close, the Alpha Sigs look back on a year full of activity and fun.

We are really proud of Carol Funk, Homecoming Queen of 1949 and Jean Leach, who was chosen the National Alpha girl of the year.

The unique Hawaiian Party at Macon and the gay Gypsy Rush dance brought us thirty-seven new pledges.

For our founder's day banquet, we went on an imaginary trip around the world as guests of our alumnae.

Alpha Sigma Alpha



ALMA K. ZOLLER, ANNA RUTH BAILEY, DIXIE BOWYER, CAROL BRENNECKE, RUTH BUNDREN, ELAINE CARMAN, CONNIE CHAPMAN, INA MAE CLAYPOOLE, BEVERLY CRAGG, PEGGY CULLEN, LOIS DYE, ELEANOR EAGAN, ANITA FORD, MARY GRIFFITHS, BETTY, JONES, MARJORIE JOHNSON, MARY JOHNSON, MARY KING, HELEN LOWELL, MARY MARTIN, GINGO MONTGOMERY, JEAN MOORE, DONNA MULFORD, JEAN MCGREGOR, JOAN MCKEE, MARGARET PLEYER, ROSE SCHIEFERDECKER, ELEANOR SCOTT, BETTY SMITH, ODETTA SMITH, DONNA THOMAS, JEANINE WATSON, LAVONNE WILGAS.

A. S. A. was thoroughly represented at the all-school Carnival. Jean McGregor, candidate for Queen, the confetti stand and an enjoyable skit.

February 11 we held our annual Sweetheart Dance.

Mother's Day arrived and the mothers of the sorority were entertained at a tea in their honor.

Last big event of the year was the Breakfast Dance, in honor of the graduating Seniors.

This has certainly been a busy and enjoyable year.

Delta Sigma Epsilon



Whooping it up at the Bunkhouse Barbeque . . . Greeting you at the Butterfly Ball . . . Chatting at Ice Sled Inn . . . Dancing at the ball . . . Delta four signing at Ice Sled Inn . . . Happy Queen Butterfly



ELVA ANDERSON, ARLENE BETTIS, DORIS BIGGS, JEAN BURK, COLLETTE CADY, IRIS CHARLESWORTH, JEANNE FENIMORE, DOROTHY FRAZER, KATHLEEN GUYER, CATHERINE HENRY, BETTY HICKMAN, LAURA HULSE, MARTHA JAMES, MARY KERR, WINIFRED KIMLER, BETTY LAMBERT, VIRGINIA LOVE, PAT MCANULTY, JEAN MCCOLLOM, BARBARA McREYNOLDS, MARY OFF, JANE PITTS, BETTY SHELTON, GERTRUDE SMITH, WANDA SMOCK, MARILYN WALKER, PAULINE KNOBBS, *Sponsor*

Delta Sigma Epsilon

Review of the year with the Delta Sigs . . . Vacation over, we all returned with a collection of suntans and new romances.

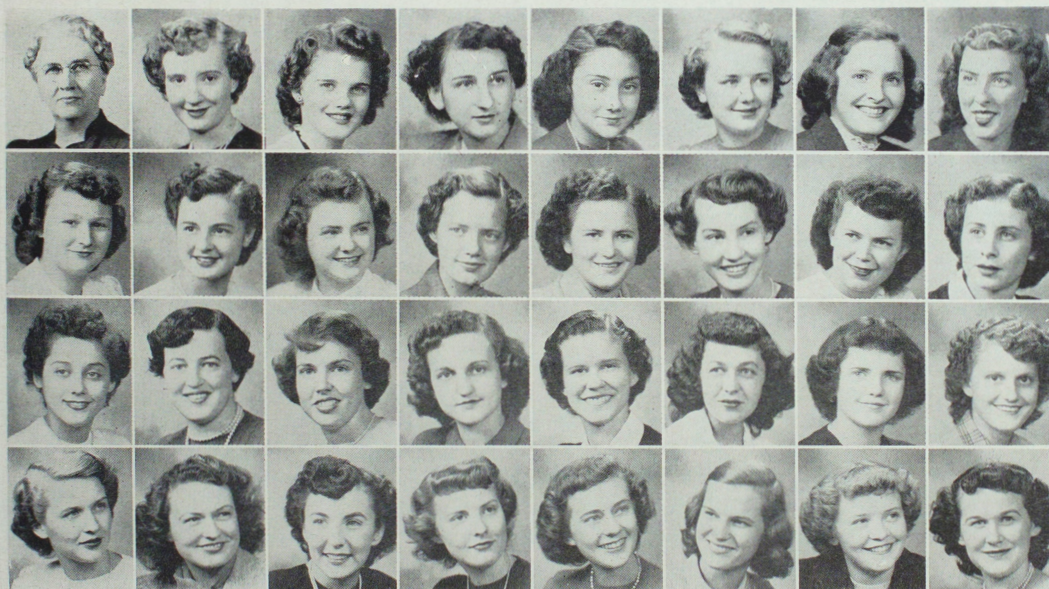
We rushed right into things. Our first rush party, the Butterfly and Penguin Ball, was all aglow. Then to the Bunkhouse for eats, songs, games, and fun. BANG!! It was all over . . . 31 new pledges.

A "Winter Wonderland" dance was given by our pledges and it was wonderful.

The Delta skit at the Carnival . . .

We cooperated with the Tri Sigs and Sig Taus to produce the "Inferno." That classic of the Campus, Jean McCollom won the race for Carnival Queen.

The annual Plantation Dance was one of the highlights of the spring season. When the butterflies quit fluttering, the Deltas found they had had many happy times during 1949 and 1950.



LUCY SIMMONS, *Sponsor*; MARY BROOKHART, CAROLYN CLINE, JANE CRUMPACKER, RUTH DEARING, MARIE FLEMING, GLORIA GILLILAND, GLADYS HAGAN, LORNA HAWES, RUTH HUFFINE, JEAN LANDMAN, NADINE MAC-FARLAND, BERTIE McCLASKEY, ELEANOR MCCOLLOM, JOYCE MICKEY, PATRICIA MOGG, ANNA PLENGE, HELEN RIDDER, LOIS ROGERS, VIRGINIA SCHNELBACKER, SARALOU SCHROCK, ELIZA SPROUL, WANDA ST. CLAIR, DORA STEELE, MARY SWAITHES, NEVA SWAN, CHARLOTTE THOMPSON, JUDITH TODD, MARY TUCKER, SHIRLEY TROUTMAN, PATRICIA WATTERSON, FREDA WORRELL

Pi Kappa Sigma



Upper Left: A happy couple at the rush dance . . . Nancy Caldwell, Pi Kappa Sigma, and Lillian Tomita, Homecoming Queen attendants in the parade . . . Pi Kappa's contribution to the parade . . . A formal tea . . . Pi Kap president Barbara Daniels and Marian Graves . . . Two members pose for informal shot.



LAVON BOTTS, BARBARA DANIELS, SHIRLEY FINNEY, JOAN MADORIN, ROGENE KENNEDY, MARY ELLEN GILSTRAP, MARYBELL NORRIS, MARYBELL WOODWARD, ANNA LOU SALLADAY, NANCY CALDWELL, RUTH JORGENSEN

Leafing through the pages of our diary, we find many pleasant memories of the past year.

Nancy Caldwell was a pretty Homecoming Queen candidate.

Our Storybook formal dance was a huge success October 28.

We all had a grand time at the Pi Kap Jammer Comic party, November 12, at the home of Mrs. Shahan.

After the rush season 25 new pledges joined their big sisters and helped celebrate the 56th year of Pi Kappa Sigma at a Founder's Day banquet.

Pi Kappa Sigma

February 3, Donna Siegle looked lovely as candidate for Carnival Queen. Our skit, the "Fatal Quest" was put on by such notables as Rose Kelly, Becky Hawkey, Mariam Graves, Garnett Grim and Mildred Carter.

Our annual Spring Fantasy dance held April 14, was the great event of our school year.

We feel that our successful school year has been made possible by our wonderful sponsor, Miss Whitson. She is number 1 in every Pi Kap's diary.

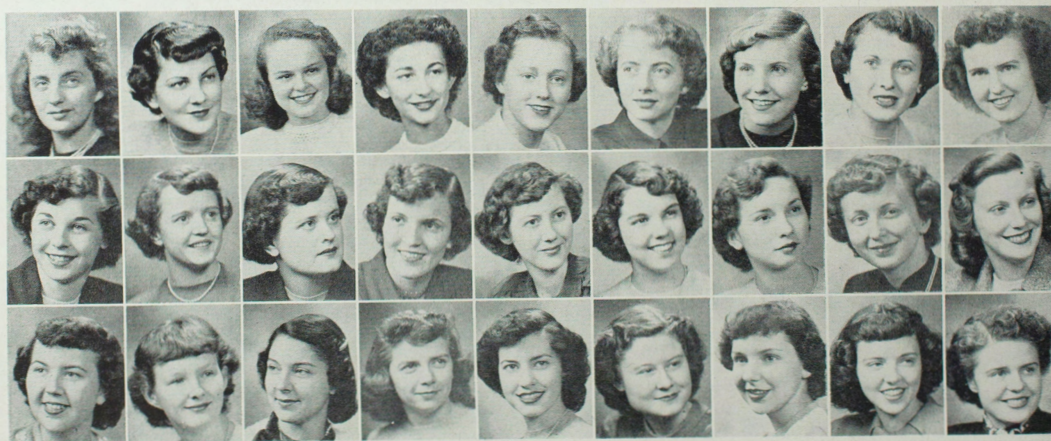


MISS WILLIE WHITSON, *Sponsor*; BETTY BAGLEY, REVA CRAGEN, JOAN DEAN, JUNE DEAN, WILDA DANIELS, JANICE DAIL, JOAN DOYLE, MAXINE EDWARDS, DOROTHY GRAVES, GARNETT GRIM, BECKY HAWKEY, WILLA HUNTS-
MAN, ROSE KELLY, MARY LOU LOVELACE, NORMA LAVOO, ANNA LOU MACK, JOLENE MILLER, MARY JANE MURPHY,
RUTH PENROD, SARAH PULIS, DONNA SIEGLE

Sigma Sigma Sigma



A bevy of lovelies gather for breakfast . . . Beautiful and athletic pledges win volleyball tourney . . . Poised and polished guests at the Diamond Horseshoe formal dance . . . Shades of Aunt Jemima . . . New cafeteria scene of pledge function . . . Kirksville Country Club is the place—1949 rush breakfast is the event.



JACQUELINE BARNETT, MARIETTA BARTLETT, GENE BOWEN, DONNA BURTON, PAT CLARK, MARJORIE CLOUGH, JEAN COOK, PEGGY DODGE, FRANCES DRURY, ILENE GUFFEY, JOAN HOOK, WANDA KIMBRELL, MITZI KLEIN, AILEEN KRIGBAUM, MARILYN LAMBDIN, SHIRLEY OLSON, ANITA PAGE, ZOLENE PERRY, LEA RAINS, MARY REED, CAROLYN REED, MARJORIE SMITH, MARGARET STEWART, SUZANNE VAUGHN, COLEEN WARD, SUE WARD, HARLENE WELLMAN

Sigma Sigma Sigma

Off to another wonderful start this year by being the proud possessors of the Pan-Hellenic scholarship cup!—Then rushing! Rushing!—A southern style breakfast complete with darkies out at the country club—a Diamond Horseshoe formal dance with glittering horseshoes for all. Tri Sigma came off with twenty new pledges that are really tops.

A Tri Sigma represented Kirksville at the American Royal.

Our pledge supper in the cafeteria—singing—laughing.

Thanksgiving and Christmas baskets for our adopted families. Our Christmas party with old Santa passing out the gifts—Pledges skit of “Night Before Christmas”—rummage sale—candy sale—basketball games—our pledges raffled off a fruit basket.

The Carnival with confetti, balloons, the Tri Sigmas, the Sig Taus, and the Deltas with a bang-up concession “The Inferno”—devils, band, floor shows—pledges put on a skit of Parade of Fashions through the Years.

To make this year even more wonderful, we received the 1948-49 Efficiency Trophy and the Scholarship Trophy from the national office—Best out of 43 active chapters.

The pledges volleyball champs—our alumni Valentine Tea—“The Candyland Ball” given by the pledges complete with candy sticks, lollipops, and bubble gum—The April Showers formal dance—umbrellas, raindrops, rainbow with a pot of gold—favors for the escorts.

Are we proud of our “Echo” Queen, Elaine Beaty Smith.

Founders Day Banquet—convention to be held at Edgewater Beach Hotel in Chicago—Another wonderfully successful year in Sigma Sigma Sigma.



MISS VIOLA MAGEE, *Sponsor*: LEAH BURKHART, CAROLYN CALHOUN, MARY LOU CLOUGH, BETTY COUCH, MARY HERSKA, MARION HUNTER, GLORIA LANZA, MARY JANE LINDER, JO ANNE MELVIN, ELAINE MYERS, BARBARA MOORE, CAROLYN PAGE, FRANCES PARCELLS, ANNE SUE ROGERS, MARTHA ROY, PATSY STORM, DELPHA SYLER, SHIRLEY TRUITT. *Not Pictured*: RUTH SIEHL, SHIRLEY SIEGLE

Phi Sigma Epsilon



OTHO BARNETT, *Sponsor*; ROBERT BAILEY, JOHN BIROS, PETE BOURN, HARRY COLE, JOE DANCOVIC, DAROLD DAVIS, FRANK FECHTLING, RONALD FREEMAN, DONALD FUNK, LYLE HELLYER, HUGH KETCHAM, FRITZ LAUER, TONY LEMA, DAVID LINTNER, DON MERRITT, ROTH NOEL, WARREN PFLUM, FRANK PICKENS, GLEN PILAND, HERB SELBY, BILL SPEAK, FRED VEACH, TED VRENICK, DONALD WALKER, JOE WEISS, JACK WELLS, CLYDE WILLIAMS

Not Pictured: ASPERGER, CREATH, ENK, LEMEN, MATTHEW, RASH, SADLER, SARRIS, CANNON.

Phi Sigma Epsilon can look back on the year 1949-50 as both successful and enjoyable. We started the year with thirty-five active members and a lot of enthusiasm. There were those get-togethers at the frat house—the chili supper—the scavenger-hunt, where Lauer's teeth made their debut—the Alpha, Pi Kap, Phi Sig sponsored open house with "Cigareets, Whusky, and Wild-Wild Women" done by "Red" Danclovic and the boys—rush season!!—the smoker stirring the frat house from top to bottom—the Apache Dance in a rocky cave—and best of all, thirty-eight new pledges who gained notoriety as the "ribbon and bucket brigade"—a beautiful "hell-night" (hot too)—formal initiation—the Carnival with "Romeo" Elam, "Juliet" Lane, and "Red" Danclovic and Company taking first with their skit—the regional conclave at Warrensburg—and the many hours of fellowship that we will always remember. We are looking forward to the spring formal in May and many more successful years for PHI SIGMA EPSILON.

Phi Sigma Epsilon



Annual Apache dance features realistic bar, costumes, ersatz Frenchmen . . . One with Mustard . . . Romalyn Liggett, Lyle Hellyer, regular twosome . . . The 1950 PLEDGES . . . Danlovic and Fechtling make like Red Ingle and crew at the carnival . . . Still making with the food . . . Stripes are the costume, Berets are the latest in chapeau styles, gay is the dance.

1950 PLEDGES

Front Row: JOHN RUNYON, VERNON BODDY, JAMES REINHARDT, JOHN NEWMAN, DUANE NORMAN, BILL McCRARY, *Second Row:* BILL SECO, MARIO DEFREDRICO, CLARENCE JONES, BOB PISTER, ELDON TIETSORT, GERALD CHANEY, JIM SIEHL, TONY KELLY, KENNETH REHG, CHARLES ELAM. *Third Row:* ASA BAXTER, GLENN FRENZEN, TED SNYDER, DAN WISELY, DAVE MCGRAW, BOB ROCKHOLD. *Fourth Row:* DON MOORE, TED FISHBACK, BILL STRICKLER, NORVIN PIERSON, LYLE OLSON, BILL COMMACK, BILL BAILEY, NED CHURCHWELL. *Fifth Row:* MICK YEOMAN, BILL TODD, JACK LANE, CHARLES FITTS, BOB APPLEBY, JOHN SMATHERS, CHARLES MEYERS, WAYNE CLARK.

Sigma Tau Gamma



JOHN GOETZE, *Sponsor*; LOUIS AGNEW, PAUL ANDERECK, MARSHALL AUGUSTINE, CARL BENNET, GORDON COLLETT, JOHN COX, BILL DAVIS, DWIGHT DE ROSEAR, CHARLES FUGATE, EVERETT GIBSON, RAY GOEKE, DAVID GOOCH, EDWARD GRIM, FRED HANES, WARREN HARDING, JIM HARDY, ROGER HOBBS, DAVID JANSON, LLOYD JOHNS, DICK JOHNSON, PAUL KAYE, JACK KELLY, BOB KERWOOD, GUS KUMM, DICK LOCHER, STEVE MELVIN, DON MOORE, DALE REESMAN, BILL RICHARDSON, DAVE RISSLER, WALLY SCHNEIDER, DON SHIPPEE, BILL SLICKER, JIM STOOKEY, BILL TRAYLOR, DON TRUITT, BOB UMBARGER, DAVID WATSON, FRANK WAY. *Not Pictured:* ACUFF, BURROUGHS, HAMILTON, WORKMAN.

The year 1949-1950 starts with great hopes for the oldest fraternity on the campus as Sigma Tau Gamma starts its 58th year. The address at 515 South High becomes home as 12 Taus move into the new Fraternity House. Say—that new Scholarship Cup looks good on the mantle. The spittoons, six shooters, and beautiful women at the '49er Rush Dance will not be soon forgotten and neither will the food and rare stories at the smoker. Homecoming sees the Taus take third place with their "Bottle Up Rolla" float.

Sigma Tau Gamma



Mellow mood at the smoker . . . "Preacher" Andreck . . . "Sheriff" Kesson and prisoners at rush dance . . . Smilin' twosome . . . Bad hombres at the '49er . . . Cleanup committee . . . Jack and Nancy . . . and 22 new Sig Taus!!

Hell week begins, snowy night treks, lovely feminine attire, and "field night"; it is all over and 22 new men sigh with relief. The Taus salvage a 2nd in the intramural volleyball tourney. Carnival time again and the Deltas, Tri Sigs, and Taus sponsor the "Inferno," night club deluxe.

Don't forget the new fraternity sign given by the alumni. Informal dances, hayrides, open house for the new fraternity house, and numerous other good times are not forgotten as the "White Rose Formal" and an evening of eating, tall tales, and dancing come to an end. Three cheers for the fine leadership of President Gus Kumm and Mr. John Goetze, the best sponsor on the campus.



ACTIVITIES



INDUSTRIAL ARTS BUILDING



1st Row: MERRITT, DANLOVIC, SPEAK, MARTIN, WELLS, FUNK

2nd Row: CALHOUN, BOWEN, MARTIN, JANSON, VRENICK, RIXIE, JAMES, KUMM, C. H. ALLEN

Student Council

The student body of the Northeast Missouri State Teachers College is governed by the college student council composed of a councilman and a councilwoman from each of the classes along with seven members elected by the student body. The members this year are: Bill Speak, President; Don Merritt, Vice-president; Joe Danclovic, Treasurer; June Martin, Secretary; Jack Wells, Carol Funk, Gus Kumm, Martha Bess James, Billie Jean Rixie, Ted Vrenick, David Janson, Chris Martin, Gene Bowen, and Carolyn Calhoun form the remainder of the 1949-1950 Student Council. Much credit is given to the able leadership of Dr. C. H. Allen, the faculty sponsor, for his guiding hand.

The homecoming dance, supervision of the Freshman handbook, open houses, partial financing of the Echo, as well as class teas and functions are all under the supervision of the student council. The all school carnival sponsored by the council again highlighted the year as well as providing the needed funds to augment council funds.

Student Social Committee

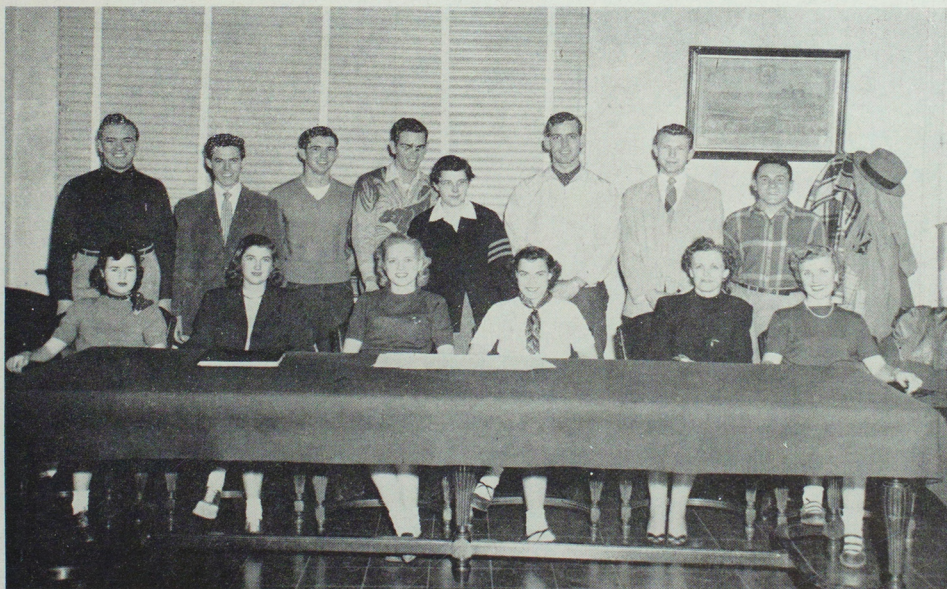
Again this year the student social committee has been the nucleus for campus activity. The committee is chosen by the Student Council from volunteers from the student body. It is closely associated with the Social Calendar Committee and the Dean of Women in the planning of the varied program of activities during the school year. Melva Rae Martin, Dean of Women is the sponsor and a member of the Social Calendar Committee is the chairman.

During the fall quarter the committee helps in the freshmen orientation, by planning the social activities for the new students. The highlight of these activities is the annual Freshman Frolic. Each year the committee plans a garden party, picnic, open houses, dances, and teas for the entertainment and benefit of the student body.

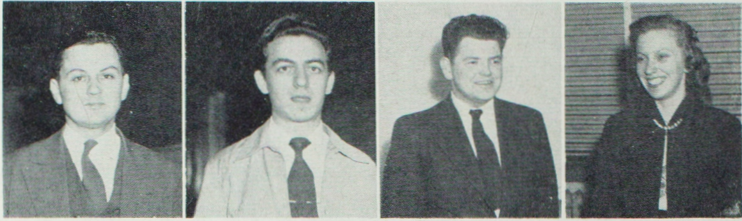
Even though this is only the second year that the committee has been active, it has done much to foster social activities on the campus and in general make college life a little more enjoyable for the students.

Seated: DANIELS, TARPENING, LIGGETT, FENIMORE, DEAN MARTIN, RIXEY

Standing: LONGWITH, COX, STUART, DANLOVIC, HAWKEY, SPEAK, COMMACK, LAUER



Band



PAUL STRUB, *Director*; LOYD JOHNS, *President*; BILL RICHARDSON, *Vice-President*; ZOLENE PERRY, *Secretary-Treasurer*

The Northeast Missouri State Teachers College band has become well-known as an outstanding concert and marching band. The marching band was an added attraction at the football games, basketball games, and parades. Directed by Paul Strub, the fifty-five piece concert band made a spring concert tour of the St. Louis area playing to audiences totaling approximately 15,000. The tour was ended with a concert in Kirk Auditorium.

Besides its many rehearsals in Recital Hall and its frequent appearances, the band takes an active part in school affairs. The band skit at the carnival was considered one of the best. The band members find time to sponsor an occasional Open House and frequent social functions for members.

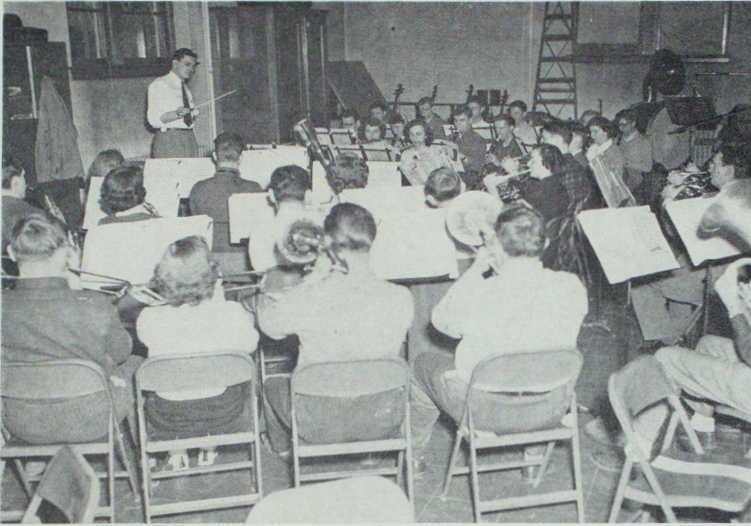
The band is organized with student-elected officers and an executive committee made up of representatives of the band. The officers were: president, Lloyd Johns; vice-president, Bill Richardson; secretary-treasurer, Zolene Perry.



College concert band during practice in Recital Hall

Band

Fifty-five-piece college band during their daily rehearsal in Recital Hall . . . Private section during rehearsal . . .
Marching band steps off a practice in Stokes Stadium.



Who's Who Among Students in American Universities and Colleges

Each year fourteen students of the Teachers College are selected for inclusion in the annual publication, Who's Who Among Students in American Universities and Colleges.

Being chosen for Who's Who gives the students a biographical listing in the publication and a certificate of membership. It also gives them the right to wear the distinctive Who's Who key and to purchase a copy of the publication.

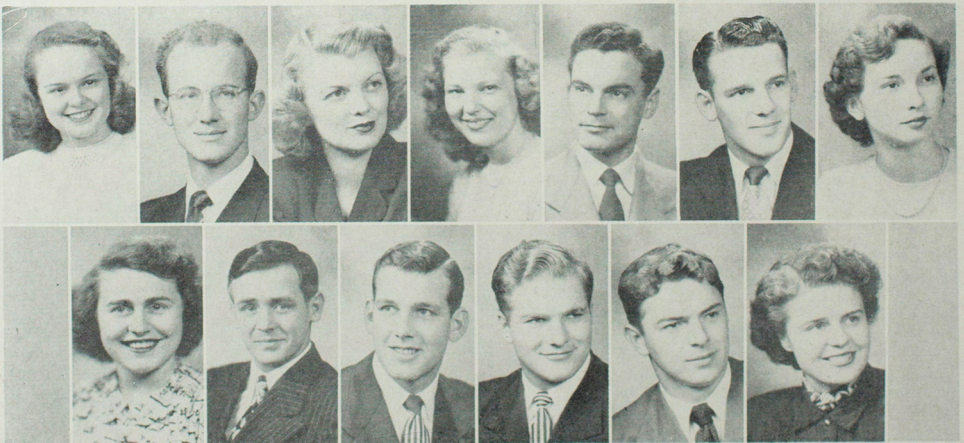
The students are chosen by a faculty committee from the junior and senior classes. The basis for selection is scholarship, leadership in campus life, and future promise.

Who's Who maintains a placement bureau for the students selected and gives worthwhile aid to the graduate.

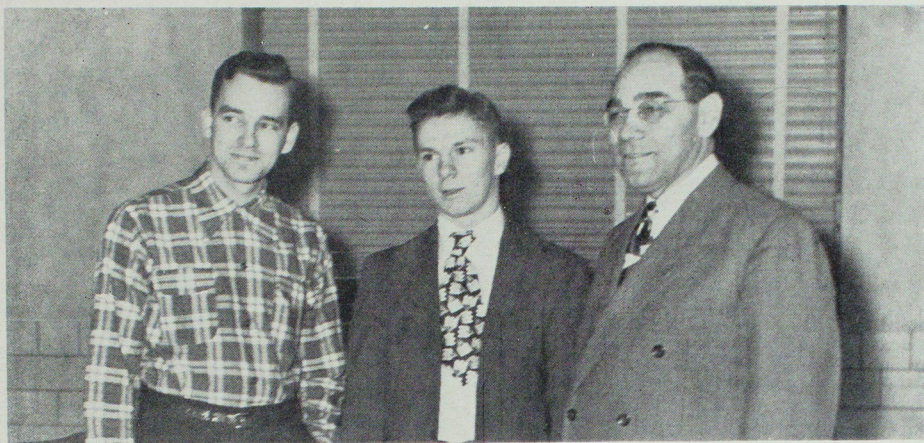
1st Row: GENE BOWEN, JOHN GOEKE, JEAN LEACH, JUNE MARTIN, STEPHEN MELVIN, DON MERRITT, SHIRLEY OLSON

2nd Row: NORMA SHEARER, ROBERT SLOAN, WILLIAM SPEAK, JAMES STOOKEY, DONALD TRUITT, HARLENE WELLMAN.

Not Pictured: VIVIEN GRUBB



Debate



Fred Hanes and Bruce Normile, Regents Award Debate winners

DEBATE SQUAD

The season started with new team combinations in all divisions. Mary Shirley and Paul Andereck, second and third year members, were paired up with the new participants: Mary Jane Mabee, Bruce Normile, Fred Hanes, Donald Truitt, and James Stookey.

Winners of the Freshman Intramural Tournament were Lois Dye and Bruce Normile. The Regents' Award prize money went to Hanes and Normile.

Truitt and Andereck, senior men's team, won the Midwest Speech Tournament in senior debate. Gordon Grober and Jim Stookey captured the titles in poetry contests in that tourney.

During the year Normile won a first rating in Debate and second in Jr. Extempore; Hanes: first in Debate and first in Junior Oratory; Stookey: first in original poetry; Grober: first in Poetry Reading; Truitt: second in Debate; Andereck: first in Discussion, two seconds in Sr. Extempore and second in Debate.

Sherod Collins, coach, was elected National President of Pi Kappa Delta, forensic fraternity, and directed the squad on trips to:

- Bradley University Invitational Tournament, Peoria, Illinois
- Midwest Speech Tournament, Kirksville
- Central College Round Robin, Fayette
- Culver Stockton College, Canton
- William Jewell Tournament, Liberty
- Westminster Round Robin, Fulton
- Missouri State Pi Kappa Delta Tournament, Warrensburg
- Mo.-Ill. Province Pi Kappa Delta Tournament, Normal, Illinois

Pi Kappa Delta Fraternity ratings were extended to Fred Hanes, Bruce Normile and Donald Truitt. Paul Andereck qualified for Pi Kappa Delta Special Distinction rating in debate.

Dramatics

Play Direction Class give three programs of short plays

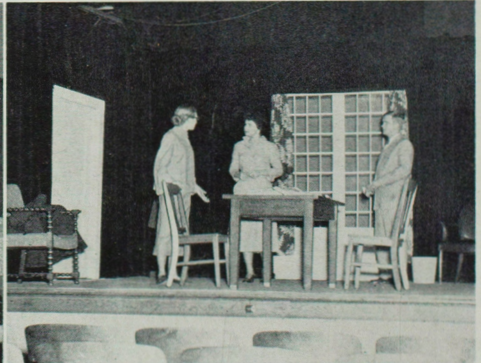
During the Winter Quarter eight one-act plays were presented in the Little Theatre, directed by students in the Play Direction class taught by Miss Betsy Worrell.

On January 26 a program of George Kelly plays, "Finders Keepers" directed by Wally Schneider and "Flattering Word" directed by Rose Marie Kelly, was given.

"Suppressed Desires" by Susan Glaspell and directed by Barbara McReynolds; Thornton Wilder's "Happy Journey" directed by Rollie Houchins; and "Present-Day Courtship" by Ronald Bottomley, Paul Kaye, director, were given on February 2.

The last program of one-acts was given on February 16. This group of three plays included "Overtones" by Alice Gerstenberg, directed by Boyd Tibbles; "Rehearsal" by Christopher Morely, directed by Jean Burk; and two scenes from Lawrence Housman's "Victoria Regina" directed by Bill Traylor.

Mary Jane Mabce and Dale Reesman in "Present-Day Courtship," directed by Paul Kaye . . . Rose Kelly and her cast for "The Flattering Word," another one of the one-act plays directed by the play direction class during the winter quarter . . . Boyd Tibbles and Paul Kaye control the stage lights from the light booth . . . Psychoanalysis is rampant in Susan Glaspell's "Suppressed Desires." The cast included Edie Maddox, Collette Cady, and Jack Kelly.



Dramatics

Major productions on the campus range from classical to modern

During the fall quarter at the Teachers' College, the Speech Department presented "Antigone" by Sophocles. The famous Greek tragedy was presented in the Little Theater on the first three days of November.

The play, directed by Miss Betsy Worrell, was given before a realistic setting designed by Don Powell, speech and drama instructor in the Junior High School, and constructed by members of College Players. The cast was chosen from the student body.

The spring quarter found the dramatic emphasis shifting from the classical to the modern. The recent Broadway hit "All My Sons" by Arthur Miller was given in Kirk Auditorium on May 3. The play was directed by Sherod Collins. Don Powell designed and supervised the construction of the setting.

Gloria Lanza and Mary Jane Mabec as "Antigone" and "Ismene" in the fall play, "Antigone" . . . Rollie Houchins as "Haemon," John Goeke as "Creon," and Wayne Clark in the same production.



Opera



Cast and chorus for '49 production of "Pirates of Penzance" . . . Principals of "The Bartered Bride" and Miss Phradie Wells, director, beginning rehearsals.

After a very successful performance of the Pirates of Penzance during the spring of 1949, the department of fine arts continued to make musical history at the Teachers' College by performing Smetana's "The Bartered Bride." Principal roles were sung by Stephen Melvin, Paul Kaye, David Rissler, Herschel Burris, Beverly Cragg, Mary Jane Linder, and Raymond Goeke.

The setting was designed and constructed by members of the Art Department under the supervision of Kurt Ballard.

Orchestra

Teachers College Orchestra presents successful concerts

The 30 piece Teachers College Orchestra, under the baton of Karl E. Webb, presented its first concert of the year in December. The concert featured selections composed by Gretry, Beethoven, Mozart, Mendelssohn, and Strauss. The formally attired orchestra gave a pleasing, polished performance.

The orchestra cooperated with the chorus in the presentation of the annual opera, "The Bartered Bride."

A final concert in April featured the original compositions of music students at the college. Students and faculty volunteer the time for rehearsals for the orchestra.

Orchestra rests during first concert of the year





Christmas Week

The week before the recess for the Christmas vacation is always one of the most gala of the year. During this time the students enjoy the annual formal Christmas dance, the Christmas tea given by the faculty, and the annual presentation of THE NATIVITY, the tableau depicting the first Christmas.

The city is decorated for the season, the buildings echo the holiday cheer, Santa Claus descends on the city with candy for the children, and good will prevails.

The Industrial Arts department takes the lead in the decoration of the campus with a Santa Claus complete with reindeer and sleigh on the roof.

The result of this week of celebration is a student body that departs for their vacation with the spirit of Christmas instilled in their hearts, ready for a joyous vacation.

Index

Journalism students provide campus with weekly news

Orchids to the hardworking guys and gals who put out the weekly Teachers' College Index under the supervision of Miss Agnes Slemmons and the leadership of the student editors. The Index came out on schedule most of the time and gave the students the latest news on classes, clubs, sports, and activities.

Thomas Kesson drew the editorial assignment during the fall, aided and assisted by his staff of H. O. Brough, Roy Broyles, Gordon Thomas, Roger Gordon, Virge Hoemann, Wanda Kimbrell, Shirley Olson, Dale Reesman, and George Waddill.

During the winter the hot scoops were gathered by co-editors Boyd Tibbles and Dale Reesman and their staff, Gil Demry, Keith Fetters, Dorothy Graves, Virge Hoemann, Shirley Olson, Anne Sue Rogers, Stan Serwatka, Cecilia Tabler, Shirley Truitt, and Bill Campbell.

Shirley Truitt was elected editor for the spring. A large staff consisting of Louise Beauchamp, Frances Boley, Jack Bushman, Harry Cantor, Roy Collins, Lois Dye, Todd Gigliotta, Earl Hicks, Anne Sue Rogers, Henry Scott, Marge Smith, Donna Thomas, David Watson, and William Richmond sharing the staff duties.

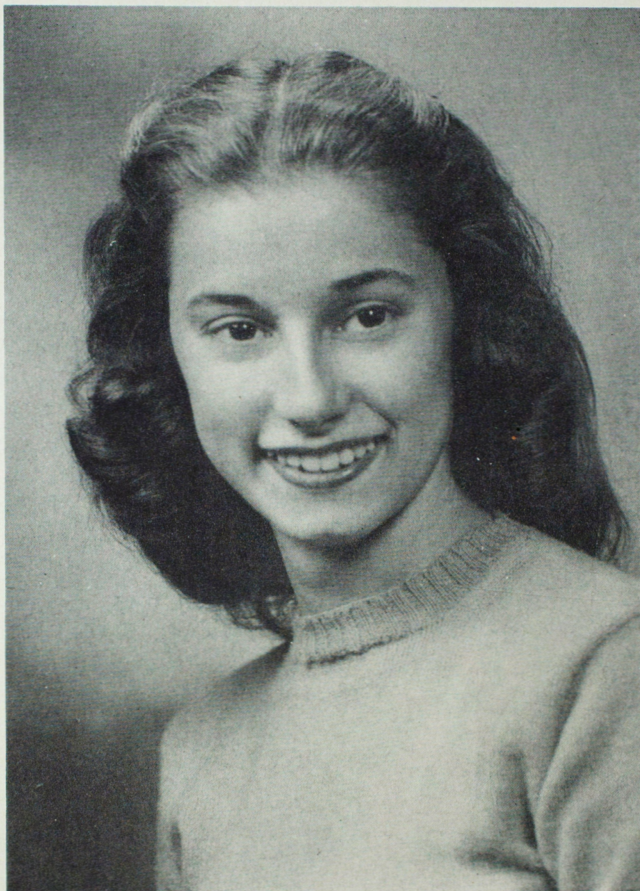
Carl Luse was this year's business manager, with Dale Reesman helping during the spring quarter. Most of the pictures used by the Index this year were taken by Virge Hoemann, the official Index "watch the birdie" man.

Seated: OLSON, GRAVES, TRUITT, HOEMANN, KESSON, BROUGH, BUSHMAN

Standing: MISS SLEMONS, TABLER, BROYLES, FETTERS; LUSE, *Business Manager*; ROGERS; DALE RESSMAN, *Editor*

Not Pictured: BOYD TIBBLES, *Co-Editor*





MISS CAROL ANN FUNK

1949 Homecoming Queen

Homecoming 1949

Blue Key planning pays off with successful event

Despite inclement weather, a large crowd of students and faculty gathered in Kirk Auditorium Friday night to begin the 1949 Homecoming celebration. The frailties that kept a large number of students from sitting on the main floor as Blue Key, Homecoming planners, asked them did not keep them from getting into the spirit of the evening and showing the kind of pep needed.

The weather outside was gloomy enough to force cancellation of the snake dance and bonfire that had been planned, but the Teachers College band; Carl Fisher, '48, master of ceremonies; Felix Rothschild and Clifton Cornwell, speakers for the evening; the cheerleaders; and the coronation of the queen provided enough celebration for everyone.

Something new in coronations was added this year. The processional of the candidates, escorted by Blue Key members, had already ascended to the stage and still the queen was secret. Blue Key president Jim Stookey walked onto the stage, a spot light went to the rear of the darkened auditorium and Bulldog quarterback Darrell Gourley passed a gold painted football with the Queen's name on it to Stookey. After an assist by Carl Bennet and John Goeke, escorts, Jim announced Miss Carol Ann Funk, Kirksville, as Queen and escorted her to the throne, to be crowned Miss Homecoming of 1949. The jubilant crowd adjourned home through the rain expecting a very soggy parade on Saturday morning.

During the night the rain stopped and by parade time it was a beautiful fall day. At ten o'clock the next morning one of the largest parades in the Teachers' College history began its way uptown. Included were floats, visiting high school bands and naturally the College band leading the parade.

The Industrial Arts Club, The Agriculture Club, and Sigma Tau Gamma Fraternity floats were chosen as the best three by a committee of businessmen.

The Queen was Blue Key's guest at the annual Founder's day Luncheon at the Traveler's Hotel. After the luncheon she and her court were escorted to the game and presented to the record breaking crowd. Other pregame activities included a parade of the prizewinning floats and the Freshman-Sophomore tug-o-war.

This year the Sophomores proved to be the more powerful aggregation and pulled the protesting Frosh through clouds of perfume administered by two cheerleaders armed with fly sprayers.

On the gridiron the Bulldogs proved unable to withstand a powerful Rolla attack and came off the field second best.

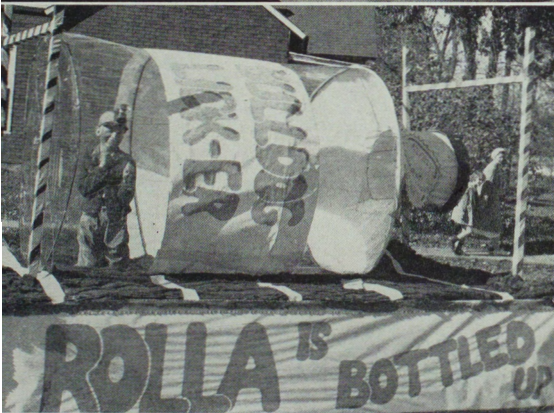
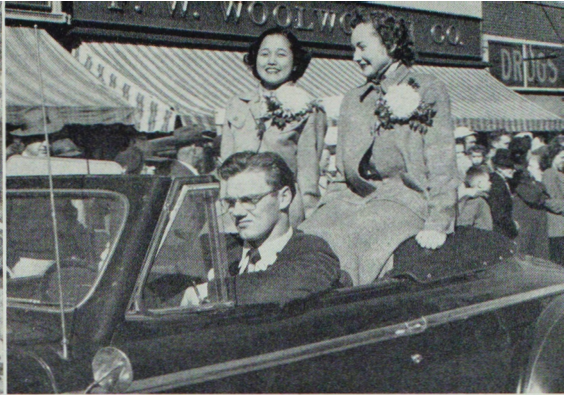
Saturday night the students and alumni again gathered in Kirk Auditorium for the Homecoming Dance featuring the music of Paul Strub and his orchestra. By the time the dance was over most of the students were ready to say that this was one fine Homecoming and were planning to spend all day Sunday recuperating.

Homecoming 1949

Below: The aspirants for the title of Homecoming Queen . . . The winner being crowned by Jim Stookey as escort John Goeke looks on . . . Her Majesty, Miss Carol Ann Funk, during the parade . . . The cheerleaders and the Teachers College band at the Pep Rally . . . The distinctive Historical Society float behind the sign . . . Frosh losing the tug'o' war get a cloud of perfume for their weakness. They weren't strong enough, but the perfume was.



Right: The first-place float, designed by the Industrial Arts Club . . . Grober and attendants Tomita and Caldwell. You'd think he would smile with such passengers . . . Agriculture Club and the number two float . . . Anderson and attendants McKee and Liggett . . . Sigma Tau Gamma wins third by bottling up the Miners . . . The Teachers College Band leads the parade . . . Carl Bennett, Blue Key, presents the trophy for tug'o' war to Sophomore captain, Russell Gilstrap . . . Sophomores pull unwilling Frosh toward clouds of perfume, and we don't mean Chanel No. 5.

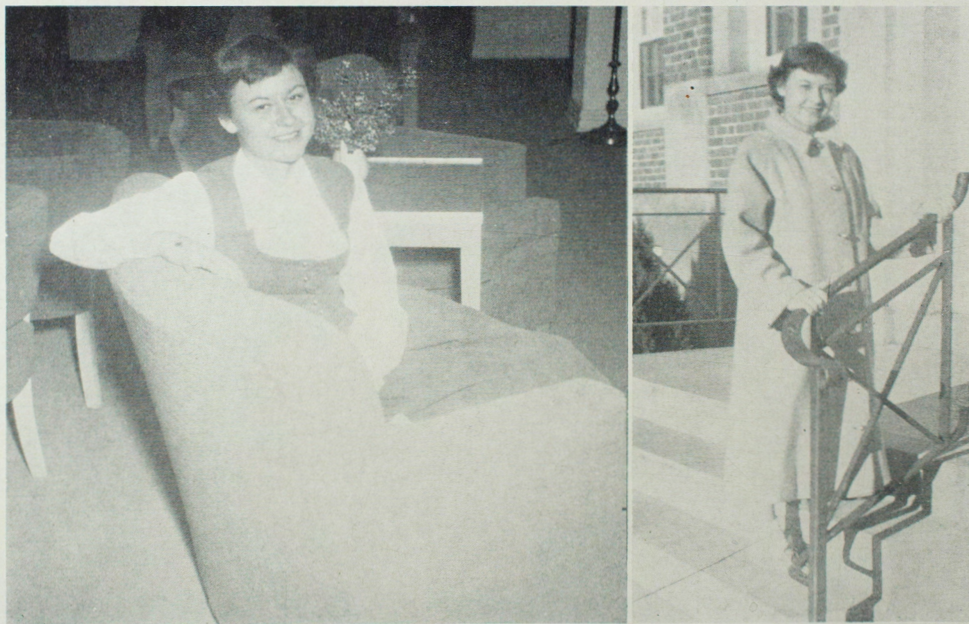


Carnival

Annual Student Council sponsored event proves more popular each year

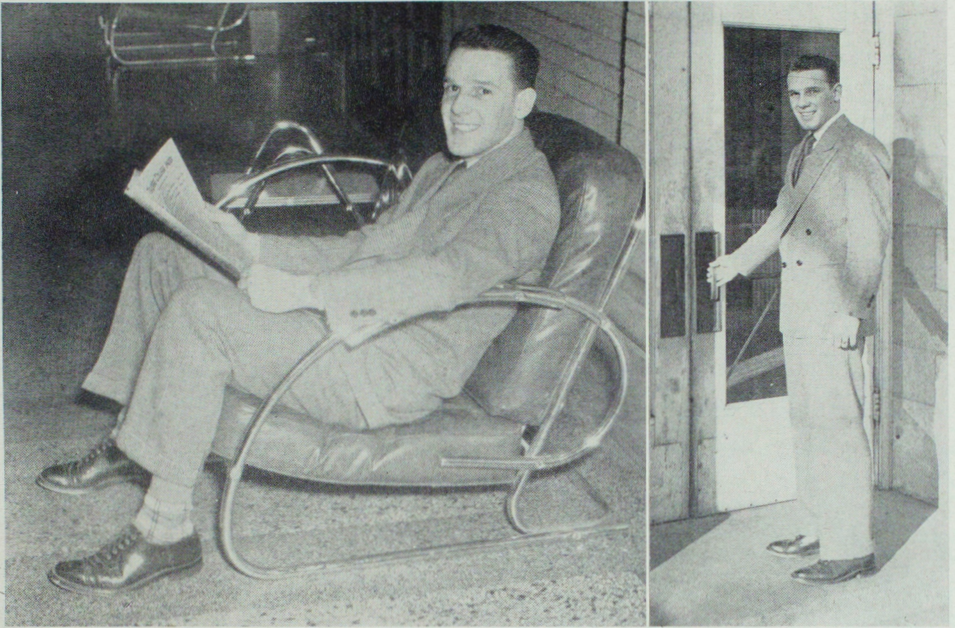
This year, the Student Council put their heads together and came up with plans for a Carnival that was to be tops. General planning chairman Ted Vrenick and his committee began early to contact the organizations to find out what sort of contribution they were planning to make.

Among concessions sponsored by the organizations were the ASA confetti stand, The Ag Club Rooster Guessing Game, The Tri Sigma, Delta, Sig Tau night club—"The Inferno," The Industrial Arts Club's penny pitch, Ellen H. Richards Snack Bar, Pi Omega Pi Penny Guessing Game, APO sponsored movies of campus life, scenes and cartoons, ACE Faculty Gallery, Alpha Phi Sigma balloon stand, and the Cardinal Key cloak room.



MISS JEAN MCCOLLOM
1950 Carnival Queen

Carnival



DON MERRITT
1950 Carnival King

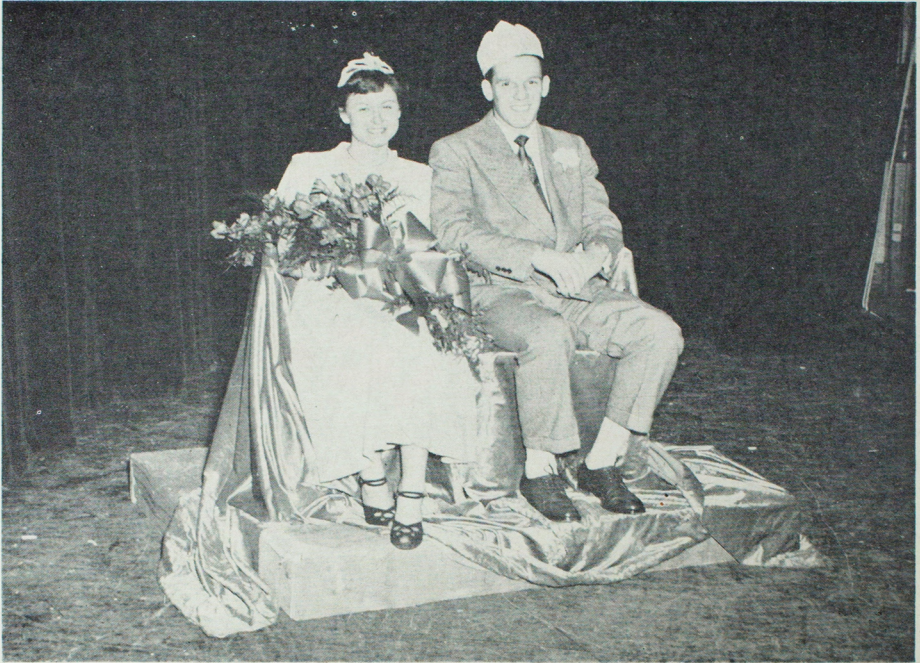
The scene of action shifted from Sociability Hall to the gymnasium for the skits presented by the organizations. From an outstanding array of clever skits the judges picked the Phi Sig parody of Romeo and Juliet and a rendition of "Cigarettes, Whiskey and Wild, Wild Women," a la Red Ingle for the first place winner. The fraternity went home ten dollars richer for their efforts.

The Sig Taus came in for their share of glory with Sigma Tau Television skit including a rendition of the "Too Fat Polka" in Deutsch by Fugate, the Ink Spots quartet, and numerous references to that taste treat in cigarettes, "Fortunate Hits."

Alpha Sigma Alpha looked into the future to see what the classroom would be in 1960 and won third prize for their ability to amusingly forecast trends in education.

The other skits were clever and amusing and added much to the general tone of laughter.

Carnival



THE ROYALTY OF THE 1950 CARNIVAL

HER MAJESTY JEAN MCCOLLOM AND KING DON MERRITT

The traditionally uproarious faculty skit, never a contestant but always a winner presented "They'll do it Every Time." Pet Peeves of the faculty for years got an airing and provided a climax to the skits that lacked little. Charles Kauzlarich, Master of Ceremonies for the skit and for the evening, was at his humorous best all evening.

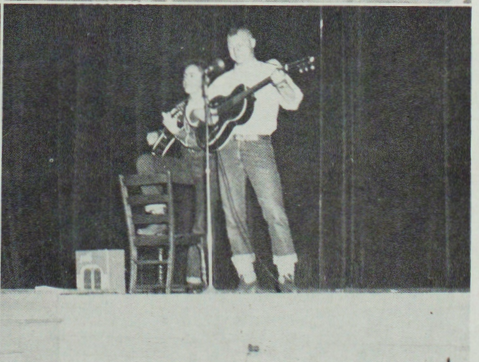
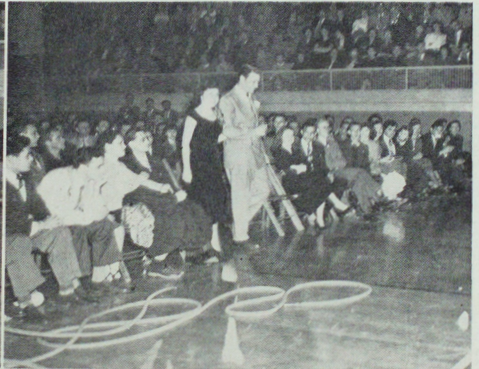
An outstanding feature of the Carnival is the race for King and Queen. Each Sorority and Fraternity chooses a candidate and supports their choice to the fullest extent of their pocket-books. This year's winner for the Queen race is Jean McCollom, Delta Sigma Epsilon. Miss McCollom is from Unionville, and a Sophomore in the Teachers College. Phi Sigma Epsilon's candidate for King was the winner again this year. Don Merritt was crowned as King of the 1950 Carnival. Don is a Senior, from Seymour, Iowa.

Carnival

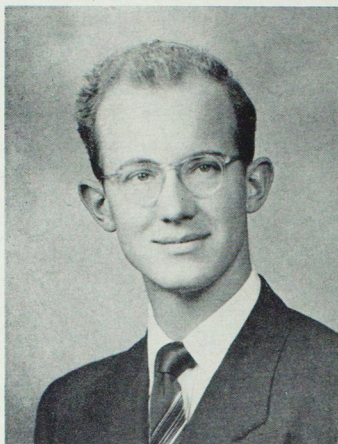
Steve Melvin was one of the lucky winners and carried a radio home. R. E. Valentine has a good eye for the number of pennies in a jar. For the second year he has won the contest. This year, however, "Val" had to share his booty with another sharp eyed fellow, George Kelso.

The main purpose of the Carnival is to augment the Student Council funds. The numerous dances and social activities sponsored by the student government calls for an extended budget. The college yearbook gets some assistance from these funds.

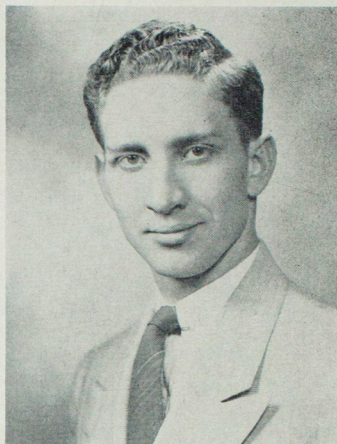
Scenes taken during the annual Carnival. Don Merrit and Jean McCollem, the Carnival King and Queen, walk to the stage . . . Carl Bennet and Jean McGregor, attendants, and David Janson and Zolene Perry . . . Russell and Hull, western music a la "Mule Train" at the Carnival.



The 1950 Echo Staff

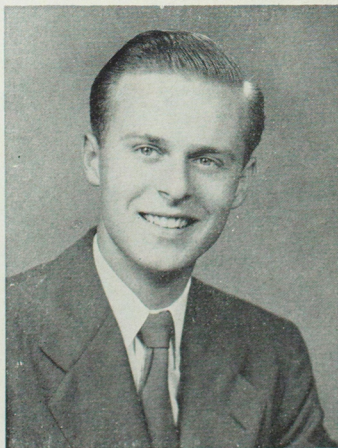


JOHN E. GOEKE, Greentop
Editor-in-Chief

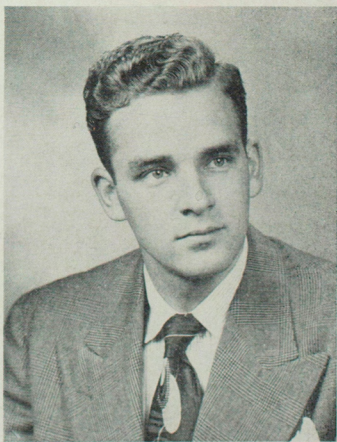


BAXTER B. STINSON, Independence
Business Manager

DAVID R. JANSON, Excelsior Springs
Assistant Editor



FRED P. HANES, Kirksville
Assistant Business Manager

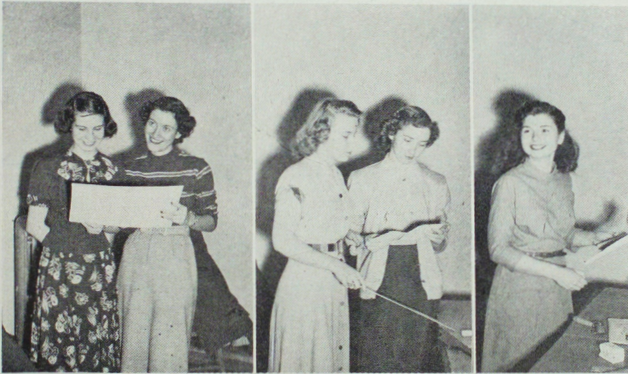


The 1950 Echo Staff



DUANE COLE, Faculty Sponsor, the 1950 ECHO

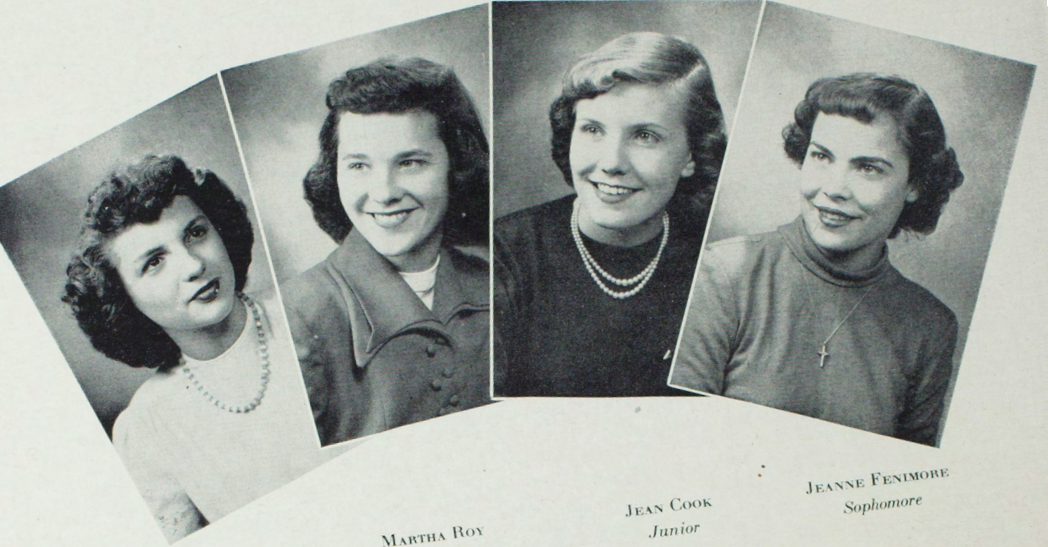
DONNA THOMAS, FRANCES PARCELLS, WILLA LOU WILCOXON, MARY LOU CLOUGH, GLORIA LANZA
Staff Members for the 1950 ECHO



DON WALKER and GUS
KUMM, ECHO Photographers
MICK YEOMANS, Cartoonist,
and ADDISON WEBBER, Pho-
tographer



Class Queens



PEGGY CULLEN
Freshman

MARTHA ROY
Freshman

JEAN COOK
Junior

JEANNE FENIMORE
Sophomore



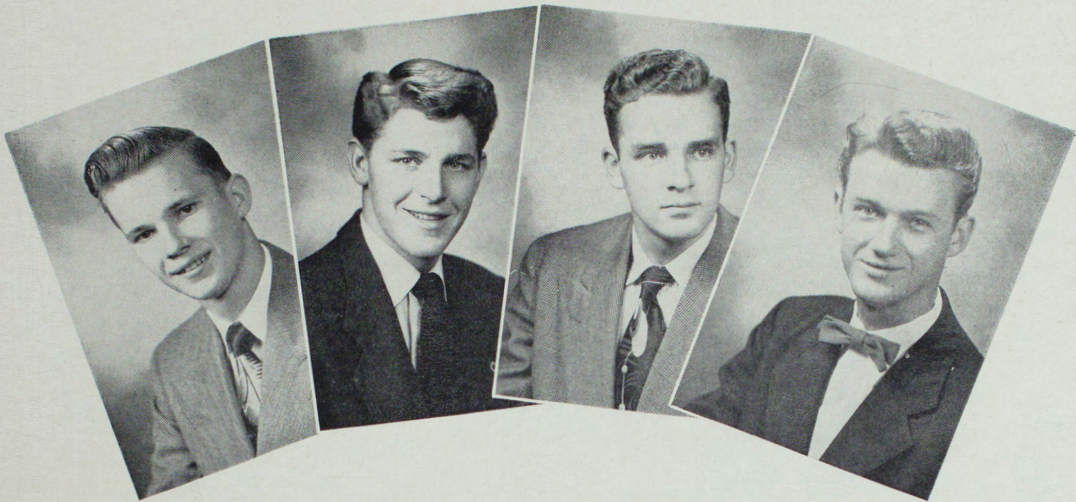
COLLETTE CADY
Junior

WINIFRED KIMLER
Senior

BETTY SHELTON
Sophomore

BILLIE JEAN RIXEY
Senior

Class Kings

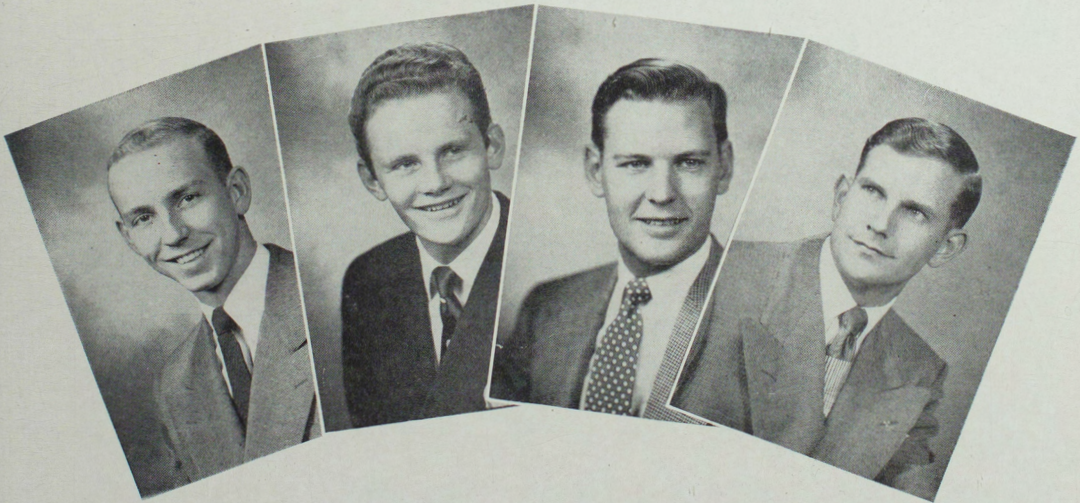


MILTON MILLER
Freshman

HAROLD YEOMANS
Freshman

FRED HANES
Sophomore

VIRGIL HOEMANN
Sophomore



DAVID GOOCH
Junior

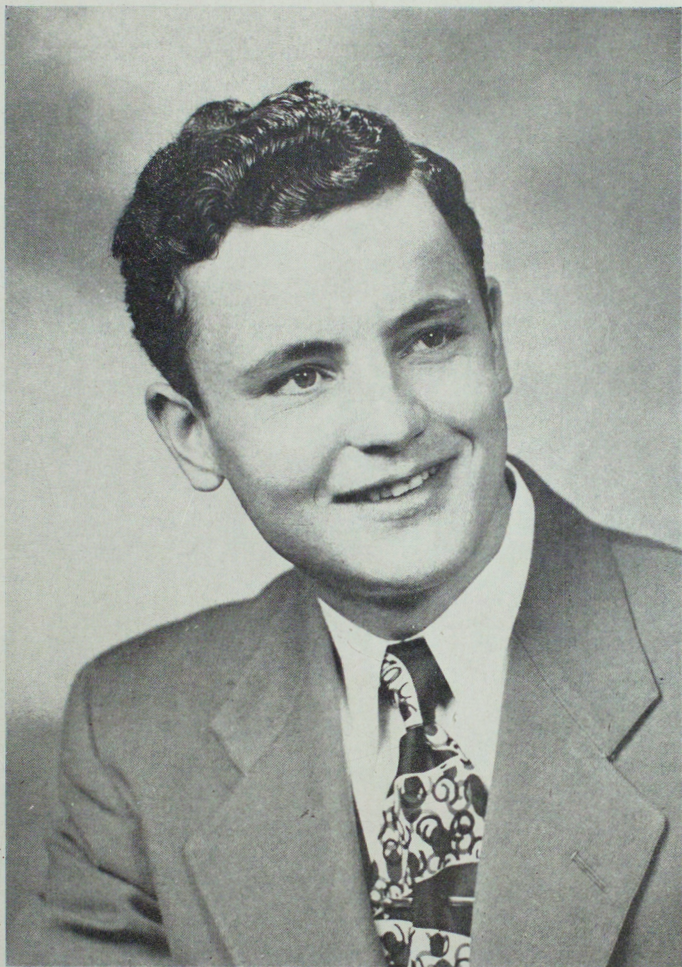
WILLIAM TRAYLOR
Junior

CARL BENNETT
Senior

WILLIAM MATTHEW
Senior



The 1950 Echo Queen
MRS. ELAINE BEATY SMITH
Sophomore



The 1950 Echo King
DOUGLAS SMITH
Freshman

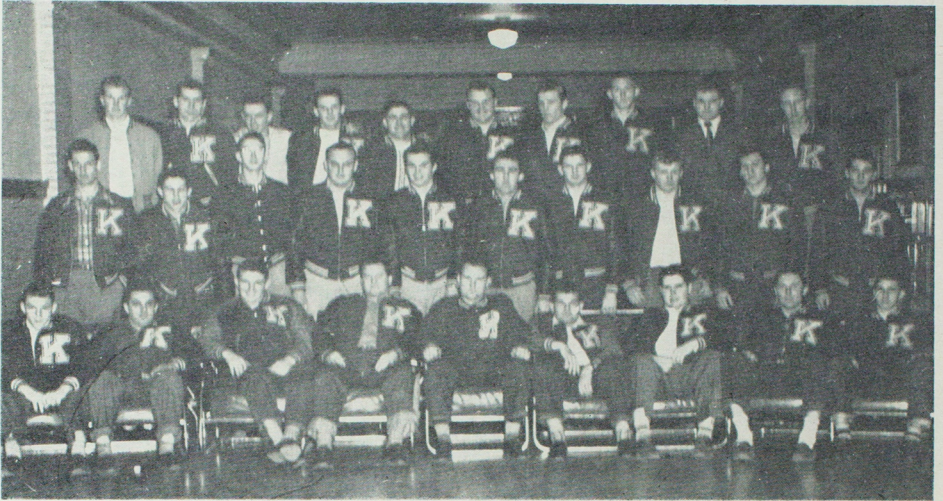


ATHLETICS



KIRK AUDITORIUM

K Club



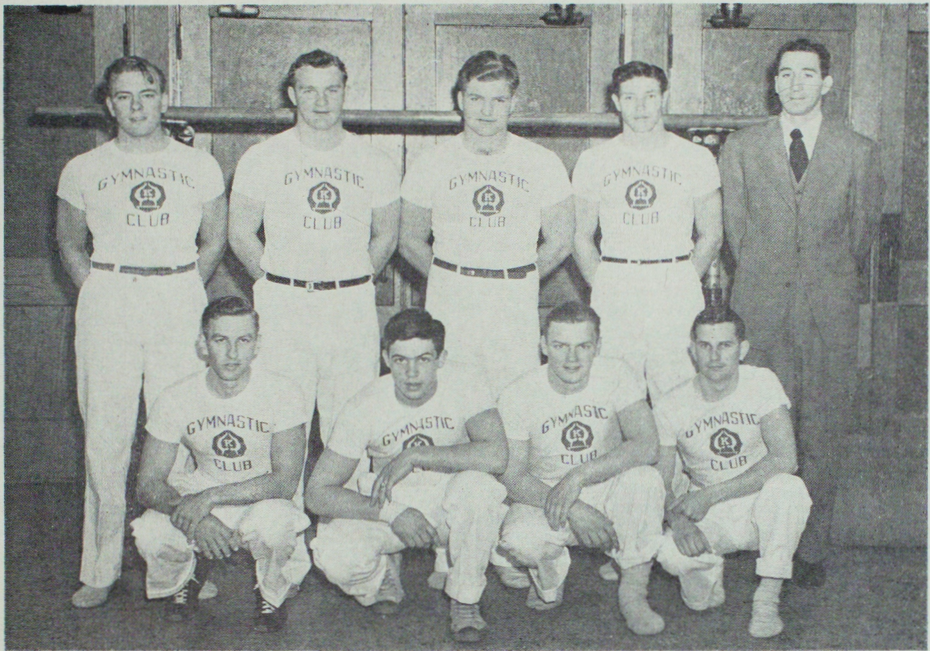
1st Row: SERWATKA, LEMA, CREATH, WILLIAMS, WELLS, VRENICK, DAVIS, THRASHER, CAMPBELL
2nd Row: ALDERSON, REHG, WALKER, FITTS, CANNON, HOLMES, DOWELL, WISELY, KREISHOK, KELLY
3rd Row: THOMPSON, PERRY, PILAND, MERRITT, RANSOME, MASON, BURTON, WESTFALL, STOOKEY, HOCHSTEDLER

Women's Athletic Association

Front Row: SIEGLE, MURPHY, POWELL, WATSON, HUFFINE, SCHROCK
Back Row: KATHRYN RIDDLE, *Sponsor:* SIEGLE, URIARTE, BELT, DENNIS, FLEMING, JOHN, LIGGETT

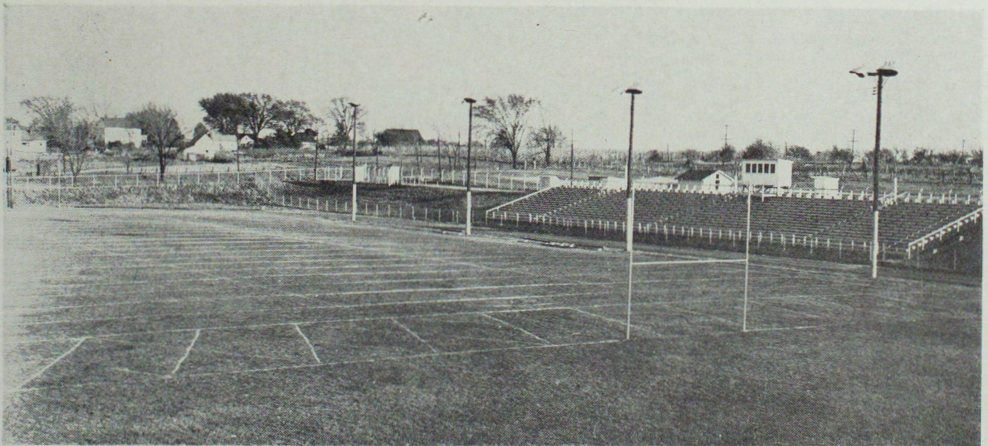


Gymnastic Club



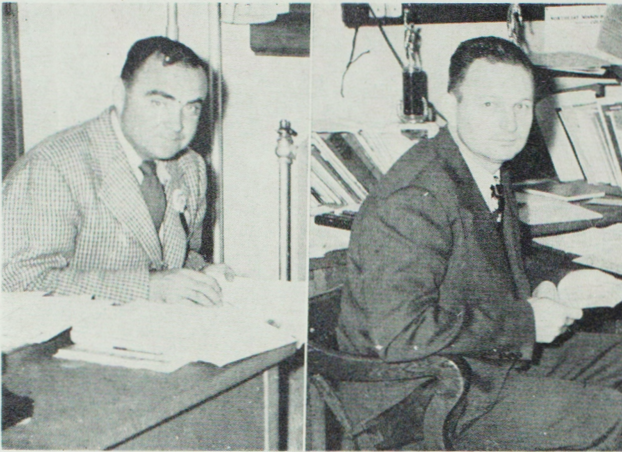
Back Row: LONGWITH, MASON, STOOKEY, KELSAY; MADDOX, *Sponsor*
Front Row: CORDREY, REHG, GROBER, MATTHEWS

Stokes Stadium



Scene of Bulldog football and track activities

Football



JAMES DOUGHERTY
Head Football Coach

BOYD KING
Assistant Football Coach

A second half jinx plagued the Kirksville Bulldogs through the first part of the 1949-50 football season. At Canton, Missouri in the season opener, the Bulldogs went down before a second half Wildcat onslaught; losing to Culver Stockton College 13 to 7 in a thrilling but heart-breaking game for The Dogs. A week later, the highly favored Missouri Valley Vikings were held to a 27 to 7 victory over the underdog Teachers in the second game of the season. Again in their third game the Dogs defense broke under a second half strain that led to a bitter 48 to 6 defeat at the hands of the St. Louis University Billikens.

The Bullpups, in their only game of the season, broke the ice as they rolled to a 20 to 6 victory over the Kemper Military Academy Cadets.

JOHN ALDERSON, JOE ASPERGER, ROGER BEISEMEYER, JERRY CAMPBELL, DON CANNON, DAROLD DAVIS



Football



SENIOR SQUAD MEMBERS

Back Row: SERWATKA, ASPERGER, WELLS, MERRITT, CREATH, GOURLEY

Middle Row: THRASHER, CANNON, LEMA, WILLIAMS

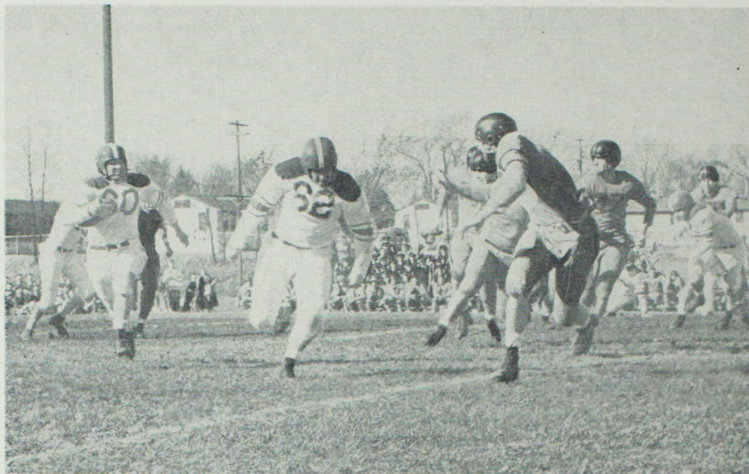
Front Row: STOOKEY, VRENICK, KELSAY, DAVIS

After a first half show of gridiron versatility the Bulldogs again lost their grip in the second half to bow before the Springfield Bears in the Dog's first MIAA game of the season. Don Merritt tallied both of the Teachers scores, once from the 20-yard marker and again from 75 yards away on an intercepted pass. The final score stood: Bears 33. Bulldogs 12.

LINUS DOWELL, CHARLES FITTS, DARRELL GOURLEY, ART HOCHSTEDLER, BILL HOLMES, TONY KELLY



Football



Jack Wells, offensive halfback, takes off on run against Rolla. Clyde Ransome prepares to open the way for him.

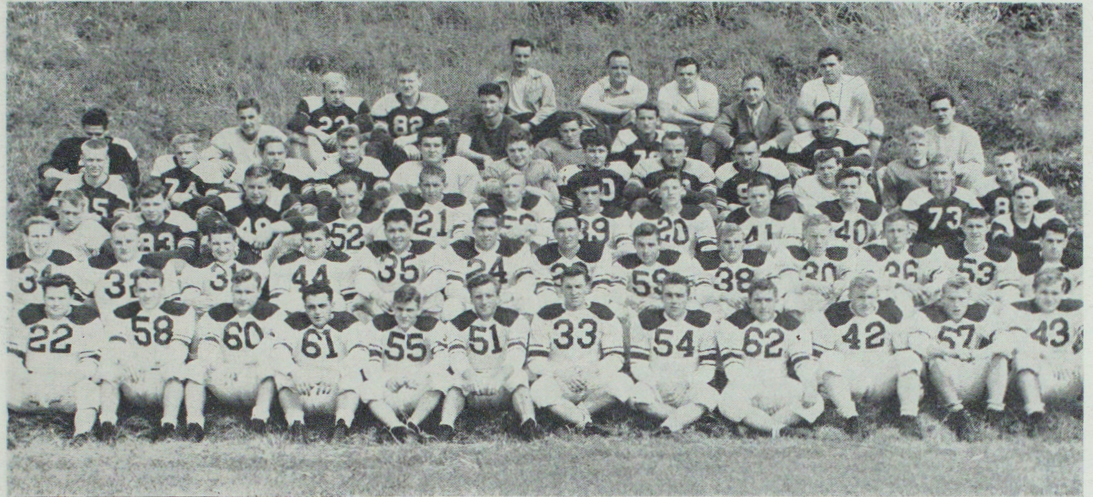
A last quarter rally put the Dogs within one touchdown of a tie with a powerful Big Green squad from Maryville as the latter won 27-20.

The Bulldogs closed the season with an impressive 22-14 win over the Missouri University "B" Team that showed that the losses of the season were probably due to strong opposition rather than weakness in the home club.

BILL KELSAY, RICHARD KREISHOK, TONY LEMA, BRUCE MASON, SAM MATHIS, DON MERRITT, CLYDE RANSOME



Football



The 1949 football squad lines up for group shot of players and coaches

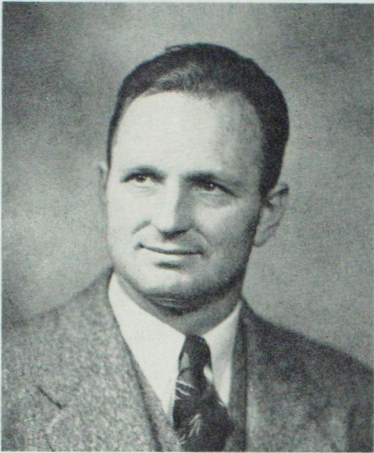
The 1949 M.I.A.A. Conference Standings

	Won	Lost	Tie
Rolla.....	5	0	0
Springfield.....	4	1	0
Maryville.....	4	1	0
Warrensburg.....	2	3	0
Kirkville.....	1	4	0
Cape Girardeau.....	0	5	0

KENNY REHG, STAN SERWATKA, JAMES STOOKEY, BURNELL THRASHER, TED VRENICK, CARROLL WESTFALL,
DAN WISELY



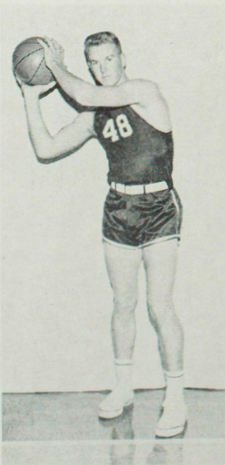
Basketball



BOYD KING
Head Basketball Coach

Early in December, the Bulldog basketball Squad, weakened by the loss of seven lettermen, piled up 67 points to defeat William Penn College in the season's opener. The early games of the season found the Bulldogs holding their own against the strong opposition Coach King had lined up. Conference play began on the road against Rolla. The Bulldogs, minus the services of Jewell Nichols, 6'6" center, lost the conference opener in a heartbreaking 51-50 decision. Letterman Nichols was out for the rest of the season with a bad ankle.

DON THOMPSON
Guard



EARL PERRY
Guard



KEN CURTIS
Forward



JEWELL NICHOLS
Center



Basketball

From then until the end of the season, the Bulldogs played fairly even, sometimes brilliant ball. With the playmaking and defensive ability of Don Thompson, and the deadly accuracy of Perry, and Chiappy, the veterans on the squad, providing the spark, Coach King's freshman and sophomore team finished the season with a record of 10 wins and 13 losses. The Teachers College totaled 1169 points in their 23 games for an average of 50 points per game.

M.I.A.A. CONFERENCE PLAY

From the ten games in conference play, the Bulldogs came out on top in half of them for a third place berth in the league. Two games that might have changed things in the M.I.A.A. all around had they come out differently were a 1 point defeat handed the dogs by Rolla and a 2 point victory by the Champion Springfield Bears.

Winning five placed Kirksville in the number three slot in conference standing. The Bears of Springfield won the first place spot and Maryville and Warrensburg tied for the second position.

The mythical All-Conference selections made by sportswriters gave Earl Perry, Bulldog guard, a berth on the first team. Perry won his place by aggressive, never give up, playing and a basket eye that netted 235 points for the year.

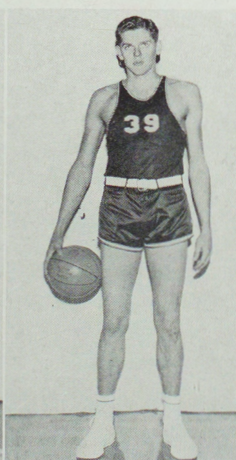
BOB LAWRENCE
Forward



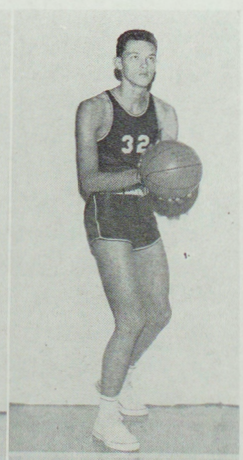
GEORGE POHLKAMP
Forward



KEN BAKER
Center



KEN STEUBE
Center



Basketball



Action during Simpson College game.

ELMER BALZER
Guard

BILL COMMACK
Guard

JOHN CHIAPPY
Forward

CHUCK THOMPSON
Guard



Basketball



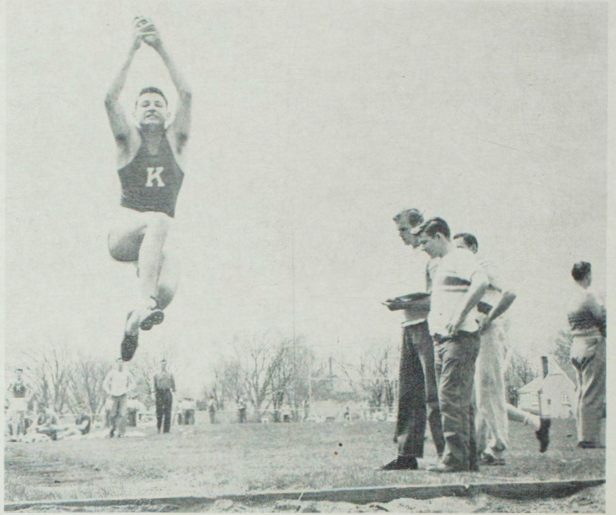
Ken Baker shoots during Simpson game

	O	K		O	K
William Penn College, Oskaloosa, Iowa.....	41	61	Illinois College, Jacksonville, Ill.....	66	54
South Illinois University, Carbondale, Ill.....	67	43	Quincy College, Quincy, Ill.....	40	44
Drake University, Des Moines, Iowa.....	68	50	Rolla.....	51	50
William Penn College, Oskaloosa, Iowa.....	30	62	Cape Girardeau.....	42	46
Nebraska State Teachers, Hastings, Neb.....	58	57	Springfield.....	39	37
Simpson College, Indianola, Iowa.....	55	51	Rolla.....	43	58
Peoria Caterpillars, Peoria, Ill.....	67	38	Cape Girardeau.....	40	46
Minnesota State Teachers, Winona, Minn.....	46	53	Maryville.....	40	43
Minnesota State Teachers, Winona, Minn.....	61	54	Warrensburg.....	48	51
			Maryville.....	49	43
			Quincy College, Quincy, Ill.....	74	56
			Warrensburg.....	75	62
			Springfield.....	57	38
			Simpson College, Indianola, Iowa...	67	72

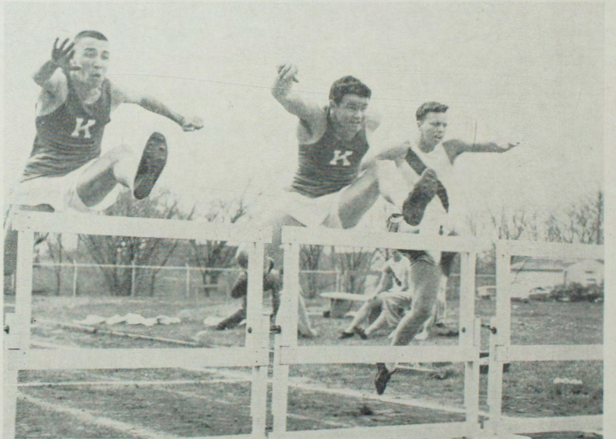
Track

Track and field events attract few participants

Linus Dowell takes off in the broad jump.



Dale Reesman and Max Sparks take the first hurdle with a slight lead in the high hurdles.



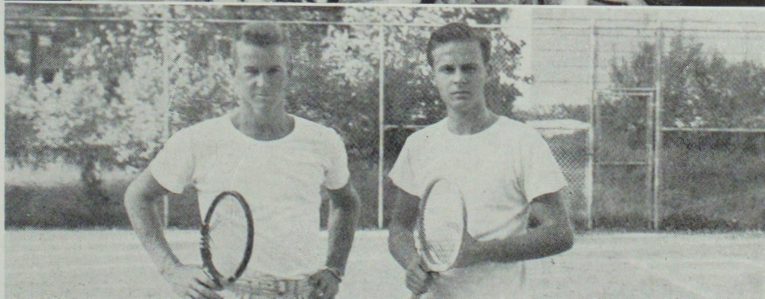
Track occupied a small place in Teachers College intercollegiate athletics during 1949. The Teachers College participated in four meets and failed to place, as a team.

Intramural Athletics

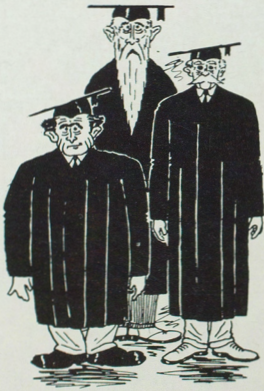


THE "OLD MEN," INTRAMURAL SOFTBALL CHAMPIONS, 1949
WEISS, MYERS, BENNY, WILLET, GOEKE
HEVEL, BYLAND, WALKER, HAMMOCK, VEACH

JUGGERNAUTS, INTRAMURAL BASKETBALL CHAMPIONS



Don Thompson and David Janson, Intramural Tennis Champions, 1949



ADMINISTRATION



EAST ENTRANCE, BALDWIN HALL



HUBERT WHEELER
State Commissioner of Education

State Commissioner of Education

In carrying out the duties of the State Board of Education, Mr. Hubert Wheeler is vitally concerned with the program of all state colleges. Therefore he meets with the Board of Regents of our college as an ex-officio member so that he may keep in close contact with the policies and management of the college.

Foremost among the duties of the Commissioner of Education is the execution of the general functions of the State Board of Education: the improving of all phases of instruction concerned with education, health, and general welfare of learners in the various levels and the assisting in effectively organizing, managing, and financing the education program of the state.



W. A. CABLE, Hannibal, *President*; ROY QUINN, Moberly, *Vice-President*. *Second Row:* P. M. MARR, Milan; HERBERT SEARS, La Plata; E. E. SWAIN, Kirksville; ROLAND A. ZEIGEL, Kirksville.

Board of Regents

The Board of Regents is the highest administrative and governing body of the college. It is composed of six members selected from outstanding business and professional men from Northeast Missouri.

This group of men sets the policies and handles the final business for the college, including the employment of faculty, approval of bills, consideration of bids for contracts and work, and the signing of contracts.

This highly esteemed group is the supreme administrative unit of the Teachers College.

The State Commissioner of Education is a member ex-officio of the board.

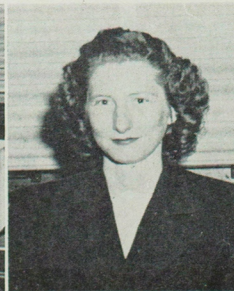


Office of the President

Joseph Baldwin, pioneer educator and founder of the Teachers College said, "Thorough scholastic training lies at the foundation of a teacher's education." The years that President Walter H. Ryle has held the highest administrative post of this college have not seen any diminishing of the quality of instruction given to the students of the college. President Ryle, a thorough scholar himself, makes every effort to see that students of this school have the best in faculty and equipment.

During his years at the Teachers College, many improvements have been made, both in educational programs and in beautifying the physical aspects of the campus.

President Ryle supervises both the physical and the intellectual phases of the campus life and the result is an outstanding teacher training institution and a campus that is one of the most beautiful in the state.



EDITH TRIMBLE
Secretary

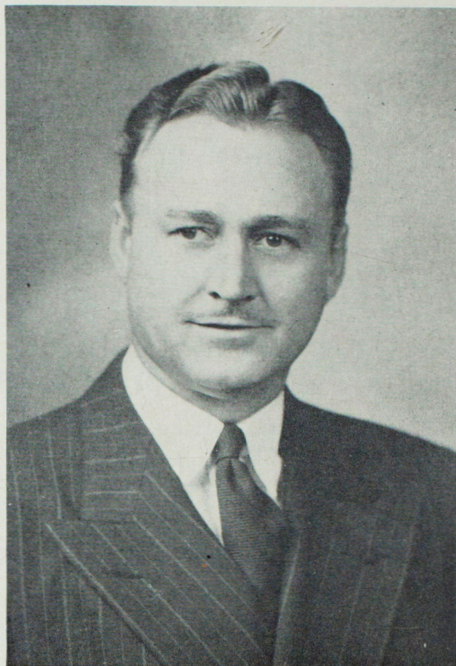
FLEETA JONES
General Secretary

MARY OFF
*Secretary to the
President*



DR. WALTER H. RYLE 1937-
President, Northeast Missouri State Teachers College

Assistant to the Office of the President



ROBERT MCKINNEY

The Assistant to the President, Robert McKinney, has the main function of representing the president, both on and off the campus.

Besides this important duty, this office maintains the Alumni Bureau, develops and sustains a sound public relations program and prepares many of the official publications for the college.



MRS. BETTY BARR LONGWITH, *Secretary*



Dean of Instruction

ROBERT C. AUKERMAN

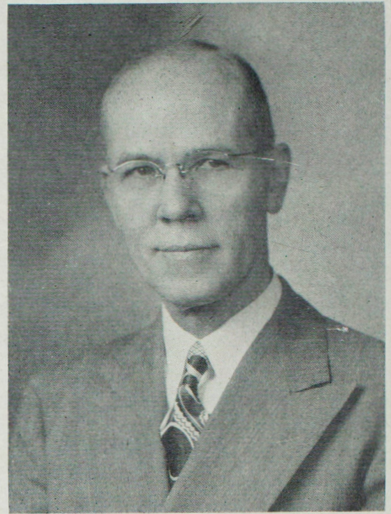
One of the busiest offices on the campus is that of the Dean of Instruction. Dr. Aukerman has charge of the educational program of the college, supervision of instruction, chairman of the Graduate Council and the Faculty Council, making reports to regional and national organizations, registration, records schedules, assemblies and many other activities. This year an extensive reorganization of the college curriculum was conducted.

MRS. SOPHRONIA HOUSE, *Secretary*

MRS. LOLA M. KENNEDY, *Secretary*



Division of Personnel Service



C. H. ALLEN

Under the direction of the head of the Division of Personnel Service are many of the phases of the college student's life. Social life, health, guidance, testing and scholastic records are administered by Dr. Allen and his staff.

Dr. Allen is sponsor of the Student Council and chairman of the ECHO board. The Dean of Women works with this division in administering the social life provided for the college.

The Veterans Administration Guidance center maintained on the campus works closely with this office.

LULA ALLEN, Counselor; DR. JOHN B. JONES, Director, Bureau of Health Service; RALPH W. HOUSE, Director, Bureau of Clinics; ALMA K. ZOLLER, Bureau of Health Service. *Not Pictured:* AMY V. ALLEN, Speech Correctionist, Bureau of Clinics.





Dean of Women

MELVA GINGERICH
MARTIN

Correlated with the Division of Personnel, the office of the Dean of Women plays a vital part in the lives of the students of the college.

Students can find rooms to suit their needs through this office.

A well rounded program of social activities is organized and administered by Mrs. Martin.

Incoming Freshmen have the Freshman Handbook to help them become oriented to college life and to answer many of their questions.

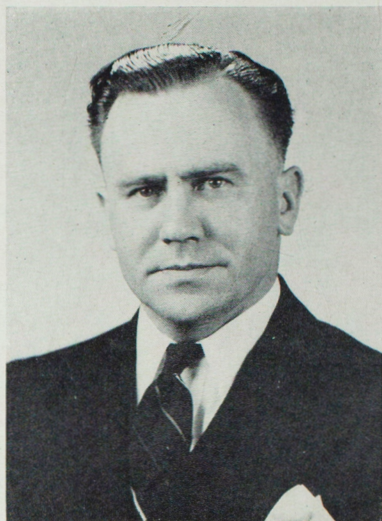
The social sororities on the campus work with this office through the Pan-Hellenic Council, of which Mrs. Martin is sponsor.

The College calendar of events in Sociability Hall is prepared by the Dean of Women.

Students find Mrs. Martin ready and willing to do all that she can to solve any problem.

Division of Extension Service

ELI F. MITTLER



FOREST L. CROOKS, Director, Bureau of Field Service.

NOAH P. RICHARDSON, Director, Bureau of Correspondence and Extension Service.

RICHARD ST. CLAIR, Director of In-Service Education.

ORVILLE BOWERS, Bureau of Visual Education

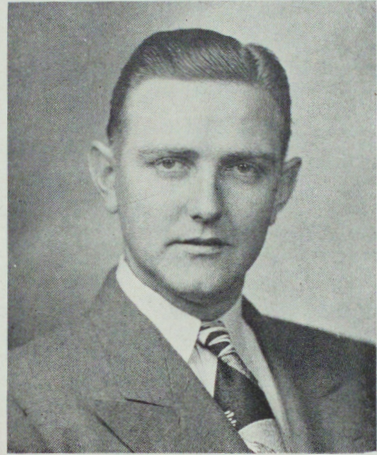
LOIS DYE, QUEEN SPENCER, PEGGY CULLEN, and MARGARET CALLAHAN, *Secretaries*





BAILEY WRIGHT, Business Manager

Division of Business Service



HOWARD MORRIS, Comptroller



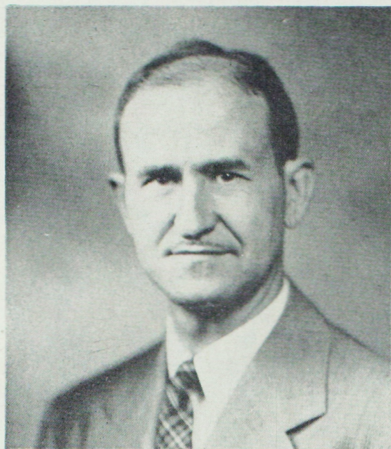
NORMA VEACH
Secretary



JOLYDA FECHTLING
Bookkeeper



PHYLLIS DUDGEON
Bookkeeper



KENNETH C. SYKES

The Office of Admissions

The Admissions Office, under the supervision of Kenneth C. Sykes, Director of Admissions, is responsible for working with prospective students before these persons arrive on the campus and are enrolled in the college. Both mail and personal contacts are made with prospective students in order to acquaint them with pertinent facts about the college. Many questions about many subjects are answered through this office.

The college followed a trend of other colleges and universities over the nation when the Admissions Office was initiated on this campus in April, 1949. Since that time the office has devoted itself to the assisting of students in enrolling here.

While this office is concerned primarily with new students, its duties include other activities. Chief among these is the operation of the news bureau for the college. Another important function of the office is that of doing the photography for the school. This phase of photography is for illustrating official publications of this school, and also for a matter of record.

CLEONE FLOWERS, *Secretary*

MINTIE GAGE, *Secretary*



The Division of Fine Arts



KARL WEBB, B.S., M.A.; JOHN L. BIGGERSTAFF, B. Mus.; KURT BALLARD, B.S. Ed., M.A.; DEAN BOWMAN, B.F.A., M.F.A.; IRENE DAILEY, B.M., B.S.; JOHN GOETZE, B.S., M.A.; LEON C. KABEL, B. Mus., M.A., Ph.D.; PAUL STRUB, B.S., M.A.; R. E. VALENTINE, B.S., M.A.; PHRADIE WELLS, B.S.; *On Leave*: WILLIAM MARTIN, B.S.E., A.M.

Highlights in the activities of the Fine Arts Division would include the concerts by the orchestra, the band tour and concerts, the opera and the chorus, and the art exhibits sponsored by the Art Department.

Students in the Division can take courses leading to degrees of Bachelor of Science in Education, Bachelor of Arts or Master of Arts.

A variety of activities connected with the division includes group music, orchestra, band, chorus, A Cappella choir and the opera, in the Music Department and various individual activities in the Art Department. The Honorary Art Club and the Aeolian Club are the associated organizations.

General courses intended for the student who desires to increase his appreciation of art are available.

Karl Webb is the head of the division.

Division of Business Education



PAUL SELBY, Pd.B., A.M., Ph.D.; EDWARD A. BRAND, B.Ed., M.A., Ph.D.; CHARLES KAUZARICH, B.S., M.A.
Not Pictured: RALPH MONAY, B.A., M.A.

Primarily intended to prepare teachers in the field of business education, The Division of Business Education also offers courses for the student who desires to enter the business field. Terminal courses are offered for students who desire to increase their efficiency in various phases of business education.

The Bachelor of Science in Education and The Bachelor of Science degrees are offered. Students of the Teachers College can earn a Master of Arts degree in this field.

Pi Omega Pi, the National Honorary Business Fraternity which was founded on this campus, is the organization connected with this division. Dr. Paul Selby is the head of the division.

Division of Education



IVAN E. MILLER, B.M., A.M., Ed.D.; C. H. ALLEN, B.S., M.A., Ph.D.; RALPH W. HOUSE, B.S., A.M., Ph.D.; C. W. MARTIN, B.S., A.M., Ph.D.; SALLIE PATTINSON, B.S., A.M.; FELIX ROTHSCHILD, A.B., A.M.; ALMON VEDDER, A.B., M.A., Ph.D.; WILLIE WHITSON, B.S., M.A.; GLENN F. LESLIE, B.S. Ed., M.E., Ed.D.

The Division of Education offers to the students of the Teachers College the necessary professional courses to become teachers. Courses are available to earn a two-year rural or elementary certificate, a four elementary or a four-year high school certificate. The division offers graduate work leading to a Masters of Arts degree in school administration.

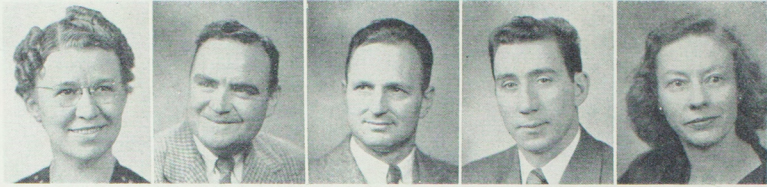
Students taking their professional training get the theory and practice of teaching.

Student teachers can teach in the Greenwood elementary school or the Ophelia Parrish Junior High School.

Associated with the division are the Association for Childhood Education and Kappa Delta Pi, Honorary Education Fraternity.

Dr. Ivan E. Miller is the head of the division.

Division of Health and Physical Education



ALMA K. ZOLLER, R.N., B.S. Ed.; JAMES J. DOUGHERTY, B.S.; BOYD KING, B.S., M.A.; DELBERT MADDOX, B.S., A.M.; KATHRYN S. RIDDLE, B.S., M.S.

Under the direction of this division are the sports program, both intercollegiate and intramural, and the physical education program. Majors in the field can earn degrees in physical education for men or women or recreational leadership.

Activities connected with the division are football, basketball, track, and the intramural sports: softball, tennis horseshoe pitching, badminton, volleyball and archery.

Organizations in the divisions are the K Club made up of men who have earned a letter in intercollegiate sports, the Gymnastics club, and the Women's Athletics Association. The facilities of Kirk Auditorium, the Women's gymnasium, and the field house and Stokes Stadium are used by the entire student body in the sports program and the physical education program.

Miss Alma K. Zoller is the head of this Division.

Division of Home Economics

LORA B. MAGEE, Ph.B., M.A., Ph.D.

LENA P. BUCKINGHAM, B.S., M.S.



The Division of Home Economics offers courses of such a nature that students of the Teachers College can either earn a degree in vocational or non-vocational home economics or can take courses designed to fit the needs of homemakers.

The activities of the division are housed in the new home economics building on the south edge of the campus. These class rooms are arranged to simulate in many respects actual homes.

Closely related to the class room activities of the division is the Ellen H. Richards club.

Library



ETHEL HOOK, B.S., M.A., *Director of Libraries*

SYLVA BROWNE, B.S. Ed., B.S.-L.S., *Librarian*

CLARA YADON, B.S., B.S.-L.S., *Cataloguer*

The Pickler Memorial Library, named for a former faculty member, has over 100,000 books, numerous documents and bound periodicals. It maintains subscriptions to 440 magazines and 25 newspapers. The library contains the Glenn Frank Memorial Library, The Laughlin Contribution of research, A Missouriana collection, an extensive collection of Children's Literature, and the John R. Kirk Library.

The Division of Language and Literature

The Division of Language and Literature includes curricula leading to majors or minors in English, speech, German, French, Latin, and Spanish. The students in this division study grammar, composition, literature, play production, speech correction, public speaking or any of the foreign languages. Actual practice is available in many activities related to the field, from newspaper staff work to debate. The Modern Languages Club, The International Club, College Players, and the ECHO staff are organizations connected with the division. Students can earn a Bachelor of Science in Education, Bachelor of Arts, or a Master of Arts. The Division teaches the freshman English and World Literature courses required. Dr. Robert M. Rodney is the head of the division.



DR. ROBERT M. RODNEY, B.S., M.A., Ph.D.; MISS BERNICE BEGGS, B.S., M.A.; SHEROD COLLINS, B.S., M.A.; MISS VERA E. FAWCETT, B.S. Ed., M.A., Ph.D.; EDGAR H. GOOLD, A.B., M.A., Ph.D.; MISS VIOLA MAGEE, B. Pdg., B.S., M.A.; MISS AGNES SLEMONS, B.S. Ed., M.A.; MISS NAN E. WADE, A.B., B.S. Ed., A.M., Ph.D.; MISS ELIZABETH WORRELL, A.A., B.S., M.S.

Not Pictured: MISS AMY V. ALLEN, B.S. Ed., M.A., Ph.D.; DR. HANS H. HAGEMANN, A.B., M.A., Ph.D.

Division of Practical Arts



OTHO L. BARNETT, B.S., M.Ed.; NORVELL C. ALLEN, B.S., M.A.; LYLE BLANCHARD, B.S., M.A.; DUANE R. COLE, B.S., M.S.; WILLIAM MINOR, B.S., M.S.

Students in this division have an opportunity to take a great variety of courses that range from bench metal work to ornamental horticulture.

The division is housed in the Industrial Arts building with the metal-working shop located in the frame class room building just south of the campus. Present plans call for an addition to the present Industrial Arts building which will give the room for added classrooms.

One important phase of practical arts training is the course in driver training. These classes plus seminars held on the subject are an important factor in improving the drivers of the state.

Students can major in Agriculture or Industrial Education. There is an opportunity to minor in several fields.

Otho Barnett is head of the division.

Clubs associated with this Division are the Agriculture Club and the Industrial Arts Club.

Division of Science and Mathematics



WRAY RIEGER, A.B., M.S., Ph.D.; JOHN D. BLACK, B.A., M.A., Ph.D.; W. J. BRAY, B.Pd., A.B., B.S. Ed., A.M., Ph.D.; LEWIS CLEVINGER, B.S., A.M., Ph.D.; G. H. JAMISON, B. Ped., B.S., Ph.D.; ALBERT P. KLINE, A.B., Ph.D.; JAMES E. CRITES, B.S., M.A., Ph.D.

One of the larger divisions of instruction in the Teachers College is the Division of Science and Mathematics. In this division it is possible to choose between biology, chemistry, general science, zoology, mathematics or physics for major or minor subjects.

Students can earn a Bachelor of Science in Education or a Bachelor of Science degree.

Many students who plan to enter other fields, medicine, dentistry, or engineering take their preprofessional training in this division.

Clubs associated with this division are Sigma Zeta, Honorary Science Fraternity and the Preosteopathic Club.

The division is housed primarily in Science Hall, with classrooms and laboratories for the various courses conveniently located.

Dr. Wray Rieger is head of the division.

Division of Social Science

The division of Social Science combines six closely related fields of study: geography, history, political science, international relations, economics and sociology. This division holds as its major objective the education of teachers who possess a better understanding of the conditions of the world today.

The division offers work leading to a Master of Arts degree as well as Bachelor's degree in the various areas.

The Historical Society is the organization associated with the division.
Miss Lucy Simmons is the division head.

LUCY SIMMONS, A.B., B.S., M.A.

JOHN P. AGNEW, A.B., A.M., Ph.D.



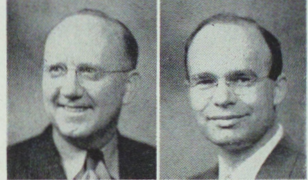
W. A. BROWNE, A.B., A.M., Ph.D.

CLARA CLEVINGER, Ph.B., A.M., Ph.D.



EARL C. CUNNINGHAM, B.A., B.D., M.Ed., Ph.D.

HAMILTON P. EASTON, A.B., M.A., Ph.D.



PAULINE KNOBBS, B.S., M.A., Ph.D.

NO YONG PARK, B.A., A.M., Ph.D.



MARTHA REDFORD, B.Pd., B.S., M.A.

RICHARD SULLIVAN, A.B., M.A., Ph.D.



BAILEY WRIGHT, B.A., M.A.



Ophelia Parrish Demonstration School

JANE CAPLITZ, LYLE CARTER, FRED A COOLEY, LEONA DABNEY, CHARLES DURALL, ELIZABETH FISK, THOBURN HAWK, MILDRED HINTON, KENYON IVERS, LESTER KRAFT, CAROLINE LEAVITT, WAYLAND LONGWITH, GERALDINE MEYERS, ANNE PARCELLS, CHARLOTTE MITTLER, DON POWELL, HERMA REDWINE, CHLORA ROTHWELL, ESTHER SADLER, HELEN SULLIVAN, VIRGINIA SWARTZ, NINA WILLIS. Felix Rothschild is the director.



Greenwood Elementary School

IRMA MARTIN, ROSA SOULE, MARY BROWN, DOROTHY IVERS, ERMA KENNEDY, DOROTHY RICHARDSON, JUANITA JONES, MARIE DOUGHERTY, EARLEEN WEBBER; MISS WILLIE WHITSON, *Director*; MARGARET BULLOCK, HAZEL SMITH

Miss Jeanne Jones is receiving the attention from Dr. John Jones, College Physician. Miss Alma K. Zoller assists him.

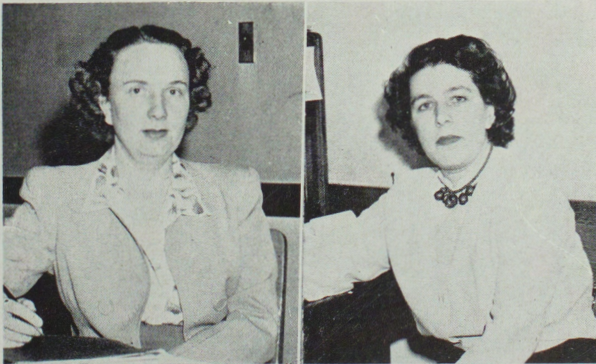


Bureau of Health Service

The main functions of the student health office are to administer the freshman and senior physical examinations, and to take care of any illnesses or accidents that occur while a student is enrolled. A part of the activity ticket is spent for this service. Dr. John B. Jones and Miss Alma K. Zoller, R. N. administer and health service.

Stenographic Office

Mrs. Frances McKinney and Miss Jenny Wright are the busy people who take care of the mimeographing needs of the campus. Here the syllabi for the various courses, and many of the tests are made. The Stenographic personnel operate the college switchboard.



FRANCES MCKINNEY

JENNY WRIGHT

Veteran's Administration Guidance Center



MR. H. L. BATES, JAMES WORMSLEY, GENE TUGGLE

The veteran students on the Teachers College campus sooner or later find themselves in some difficulty concerning their G I benefits. When this happens they know where to get their troubles straightened out. The Division of Personnel and the Guidance center work hand in hand to help veterans in anyway they can. The veteran can get expert counseling, aptitude tests, straightened out subsistence problems and any questions concerning his training status answered. The staff is composed of H. L. Bates, Chief, Gene Tuggle, training officer and James Wormsley, agricultural training officer.

The office maintains a complete file of records on the veterans of this area who are taking advantage of the benefits of the G I Bill.

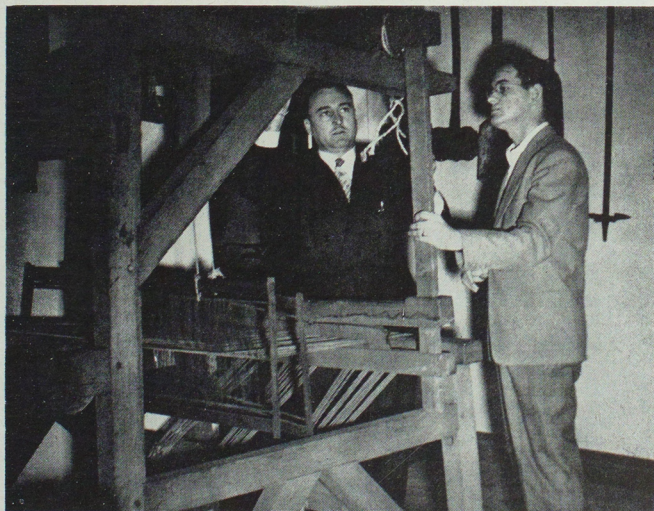
The Violette Museum

The Violette Museum, housed in the basement of the John R. Kirk Memorial is under the curatorship of Robert McKinney.

The museum houses a collection of antiques and souvenirs. Prominent among the collection is a suit of medieval armor, a loom, farm machinery used in early American times, a collection of guns, uniforms of various wars, and many other items.

The museum has been slowly growing over the years. Many people donate articles of interest.

Robert McKinney, Curator, checks paper work concerning the museum.



Mr. McKinney and a student examine a hand-made loom.

Superintendent of Buildings and Grounds



First Row: A. J. COOLEY, E. W. HAWKINS, O. E. LAIR, MORRIS JOHNSON, B. L. MOORE, E. B. BAUER, W. E. PATTERSON, ORRIN DREYMAN

Second Row: JASON SMALL, MERLIN S. SCOTT, WILLARD AMORE, ALBERT CASTNER, PAUL HOLMAN, ERNIE SCOFIELD, EMERY JOHNSON, R. H. RHOADES, CARL GUFFEY

Third Row: NOBLE REDMON, ARNOLD CASTNER, BEN FOX, D. P. FUNK, K. G. DOUGLAS

Under the supervision of Dr. Walter Ryle, Mr. Bailey Wright, Mr. Howard Morris, Mr. Robert McKinney and Mr. J. L. Blanchard the maintenance staff of the college has carried out the job of keeping the campus in good shape. Many of the buildings have been repainted inside and out. Landscaping has progressed toward the ideal of the administration, the most beautiful and well kept campus that can be had.

Residence Halls



MISS EULA JUMP, *Director*

With the completion of the new residence halls, a new phase of student life has developed on the Teachers College campus. The residence halls provide pleasant rooming facilities for a larger number of students. On each floor of the buildings there is a lounge, a kitchenette and telephone booths. The main lounge serves as a reception room for the occupants.

In the basement, the recreation lounge and snack bar has become one of the more popular hangouts for students. The recreation lounge is comfortably furnished and has plenty of elbow room.

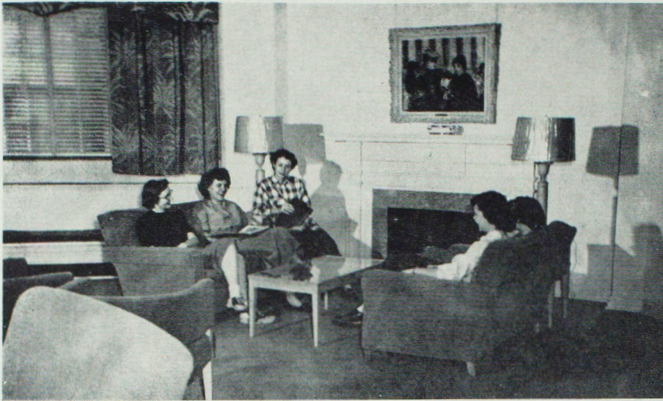
Students living in the halls have modern laundry equipment available for their use.



Blanton and Nason Halls, Residence Halls for Women, Completed in 1949, Dedicated by Lt.-Governor James T. Blair on October 21, 1949

Residence Halls

Main reception room, Residence Halls, is beautifully decorated and tastefully furnished . . . The snack bar is open to the student body . . . Popular recreation lounge in the basement, scene of dances, card games, and coke dates



Residence Halls



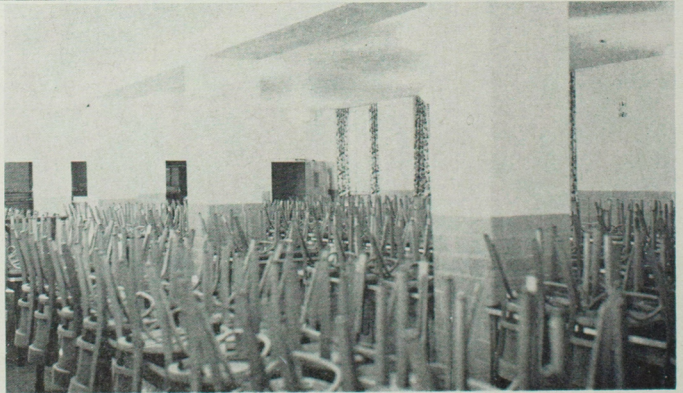
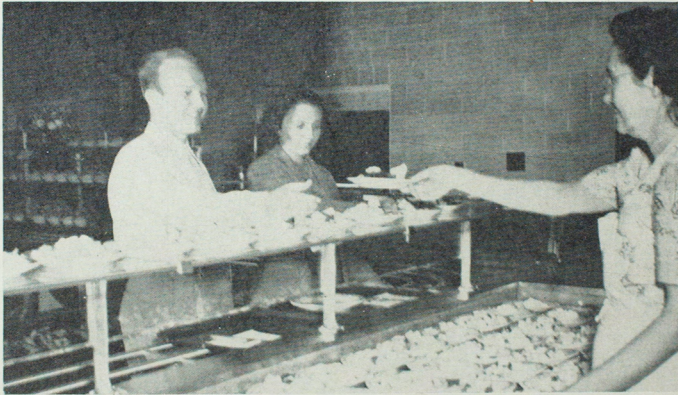
Mrs. Florence Miller, college dietician at the Residence Halls, prepares the Thanksgiving turkey

The Students who live in Blanton or Nason Hall have solved the problem of where to eat to insure wholesome meals served in an attractive atmosphere. The cafeteria in the basement of the halls fulfills these requirements. Menus are planned by and the meals prepared under the supervision of a dietician. The kitchen is equipped with the latest in kitchen equipment.

The services of the cafeteria are not restricted to those who live in the residence halls. Other students on the campus have found that to eat in the cafeteria is to enjoy a good meal.

Residence Halls

A portion of the modern kitchen in the residence halls. Helen Sparks, Jenny Slover, Lillie Salome and Robert Hayward are staff members . . . Students take advantage of the cafeteria service available . . . A picture of the main dining room between meals.



Autographs

Thanks!!

The staff of the 1950 ECHO wishes to thank everyone who has helped in the production of the annual. Special thanks to

BURGER-BAIRD ENGRAVING COMPANY
Kansas City, Missouri

MID-STATE PRINTING COMPANY
Jefferson City, Missouri

ALEXANDER'S STUDIO

KENNETH C. SYKES

THE STUDENT COUNCIL

