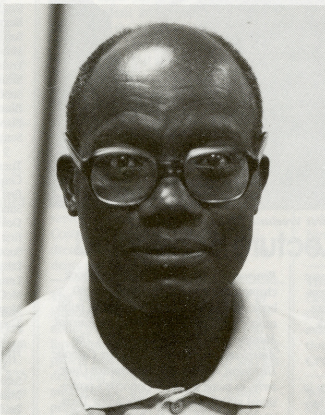


## Northeast Hosts Fulbright Scholar

Although several members of the Northeast community have been visiting Fulbright scholars on other campuses, until this year Northeast had never hosted one. Godfrey Muriuki, a professor from the University of Nairobi, is teaching classes in African history and helping the Social Science division faculty increase their knowledge and teaching abilities about Africa this year.

Northeast has offered classes in African culture, basically classes in their politics, economics and literature. The University has the building blocks of a program, according to Jim Lyons, head of the social science division, but the University is hoping that Muriuki can help plan for an African studies program.

According to Alana Preussner, grants specialist, "Dr. Muriuki's presence here at Northeast enhances internationalism on the campus. He is a well-educated, well-traveled person, so having him here as a resource person, not only as an historian but as an educator, is a very important thing for us to have." Preussner stated that, as visiting Fulbright scholars are very



Fulbright Scholar Godfrey Muriuki, University of Nairobi

competitive to get, having one here helps Northeast both regionally and nationally. The fact that Northeast has received its first-ever visiting Fulbright scholar is very important for the University in that it puts Northeast in a relatively select group nationwide and may

make enable the University to be awarded scholars in the future.

So far, Muriuki has been "favorably impressed" with Northeast. Muriuki said that it seems to him that the administration has made a "concerted effort towards student interaction with faculty and staff." He noticed that most Northeast instructors are accessible to their students and will help them outside of class. He feels that it is important for students to be able to ask the instructor for assistance instead of being referred to a teaching assistant. He said that generally faculty, staff and students are very friendly and introduce themselves to him when they see him around campus.

Muriuki is a professor of history and the chairman of the history department at the University of Nairobi. He is also a former dean of the faculty of the arts for the University.

Muriuki is willing to talk to faculty, staff and students about any questions they may have. Also, he will come and speak to interested groups and classes. Muriuki can be reached in McClain Hall 207A, 785-7242.

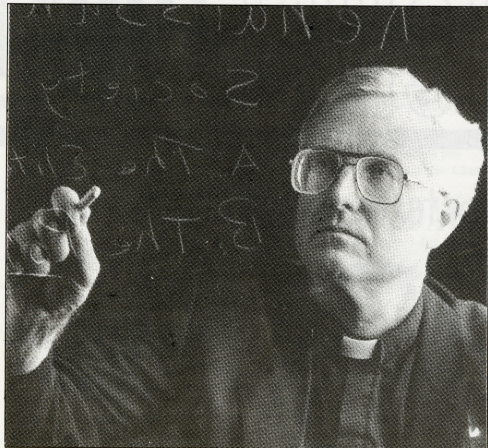
## Voter Registration Drive

A voter registration drive is being held on campus this fall. In order to vote on Nov. 5, one must be registered by Oct. 16. There will be tables from 11 a.m.-2 p.m., Sept. 26 as well as Oct. 2, 10 and 16, in the SUB. There will also be a registration table 4:30 p.m.-6:30 p.m., Sept. 25, in Ryle Hall. To register, one must be an American citizen at least 18 years of age and be able to present a form of identification. Registration is also available 8:30 a.m.-4:30 p.m., Monday-Friday, at the County Clerk's Office in the County Courthouse.

Certified notaries are being sought to assist the Student Voter Registration committee with absentee voting. Notaries interested in helping should contact Teri Brickley at 785-5706.

## Volunteer Fair

The Center for Service-Learning is sponsoring Volunteer Fair '91. The fair will be held from 2-6 p.m., Sept. 25, in the SUB Activities Room. Thirty local agencies will be present to explain their functions.



The Rev. John Patrick will be the first Vreeland Lecturer.

## First Vreeland Lecture Scheduled

The Rev. John Patrick Donnelly, professor of history at Marquette University, will present the first Barbara Early Vreeland Lecture in History on Oct. 3. Donnelly will speak on "Peasants and Humanists: Peter Brueghel's Art as a Historical Source" at 3:30 p.m. in the SUB Alumni Room.

The Barbara Early Vreeland Lectureship in History was established this year by her husband, Joseph Vreeland, through the NMSU Development Fund. Barbara Early Vreeland graduated from Northeast in 1973 with a bachelor's degree in history and French.

A well-known historian on the Renaissance and Reformation as well as ancient Greece and Rome, Donnelly is the author of *Calvinism and Scholasticism in Vermigli's Doctrine of Man and Grace and Reform and*

*Renewal*. He has written numerous book chapters and articles. His more than 80 book reviews have been included in publications such as *Sixteenth Century Journal*, *Manuscripta*, *Theological Studies*, *The American Historical Review*, *The Catholic Historical Review* and *Renaissance Quarterly*, to name a few. Donnelly's professional affiliations include Phi Alpha Theta, the American Society for Reformation Research, the American Historical Association, the Sixteenth Century Studies Conference, the American Catholic Historical Association, the Society for Italian Historical Studies and the Renaissance Society of America.

Donnelly holds degrees from St. Louis University, St. Mary's College in Kansas and the University of Wisconsin-Madison.

## Computer Lab Hours

### Academic Computing Lab

Violette Hall 248, 785-4356  
Monday-Thursday: 8 a.m.-1 a.m.  
Friday: 8 a.m.-6 p.m.  
Saturday: 10 a.m.-5 p.m.  
Sunday: Noon-1 a.m.

### Apple Microcomputer Lab

Violette Hall 102, 785-4361  
Monday-Thursday: 8:30 a.m.-11 p.m.  
Friday: 8:30 a.m.-3:30 p.m.  
Saturday: 10 a.m.-4 p.m.  
Sunday: 1 p.m.-11 p.m.

### Barnett Hall Lab

Barnett Hall 214, 785-4414  
Monday-Thursday: 8:30 a.m.-10:30 p.m.  
Friday: 8:30 a.m.-12:30 p.m.  
Saturday: Noon-5 p.m.  
Sunday: 5:30 p.m.-10:30 p.m.

### Blanton Hall Lab

Blanton Hall basement, 785-4709  
Sunday, Monday and Wednesday:  
9 p.m.-11 p.m.

Tuesday and Thursday: 7 p.m.-9 p.m.

### Centennial Hall Lab

first floor Centennial Hall, 785-4829  
Sunday-Thursday: 6:30 p.m.-10:30 p.m.

### Dobson Hall Lab

first floor Dobson Hall, 785-5142  
Sunday-Saturday: 8:30 a.m.-5 a.m.  
Lab Assistants available: 7 p.m.-12 p.m.

### Language and Literature Lab

McClain Hall 307, 785-5771  
Monday and Wednesday: 8 a.m.-2:30 p.m.  
Tuesday and Thursday: 8:30 a.m.-11:30 a.m.  
3:30 p.m.-5:30 p.m.  
Friday: 8:30 a.m.-2:30 p.m.  
3:30 p.m.-5:30 p.m.  
Saturday: Noon-4 p.m.

### Music Computer Lab

Baldwin Hall 127  
Monday-Thursday: 11:30 a.m.-10:30 p.m.  
Friday: 11:30 a.m.-6:30 p.m.  
Saturday: 1:30 p.m.-6:30 p.m.  
Sunday: 1:30 p.m.-6:30 p.m.

### Ryle Hall Lab

second floor Ryle Hall, 785-5706  
Sunday-Saturday: 8 a.m.-5 a.m.

### Science Hall Lab

first floor Science Hall, 785-4608  
As posted on door

### Violette Hall Business Labs

Violette Hall 11 and 185, 785-4361  
Monday-Thursday: 8:30 a.m.-11 p.m.  
Friday: 8:30 a.m.-3:30 p.m.  
Saturday: 10 a.m.-4 p.m.  
Sunday: 1 p.m.-11 p.m.

### Brewer Hall Lab

Brewer Hall basement, 785-4757  
Check out key from hall desk

### Grim Hall Lab

third floor Grim Hall, 785-5342  
Check out key from hall desk

### Missouri Hall Lab

third floor Missouri Hall, 785-5383  
Check out key at hall desk

## Volunteer Fair Participants

Adair County RSVP  
Adair County Public Library  
Adult Basic Education  
American Cancer Society  
American Red Cross  
Chariton Valley Association for  
Handicapped Citizens  
City of Kirksville  
Division of Family Services  
Fellowship Baptist Church  
GAMM Vocational Training  
Program  
KCOM-Adair County-WIC

Kirksville Area Chamber of  
Commerce  
Kirksville Hospital Chaplaincy, Inc.  
Kirksville Osteopathic Medical  
Center  
Kirksville R-III School District  
Kirksville Regional Center  
Laughlin Pavilion  
Mark Twain Area Counseling  
Center  
Missouri Department of Social  
Services

Missouri Division of Vocational  
Rehabilitation  
NEMO Community Action Agency  
NEMO Regional Planning  
Commission  
Patient Ed - ICOM  
Preferred Family Healthcare, Inc.  
Region II Council for Developmental Disabilities  
Salvation Army Thrift Store  
Social Security Office  
Twin Pines Adult Day Care  
United Way of Adair County  
Violence Intervention Services  
YMCA

## Introducing . . .

# Jason Haxton, Director of Residential Living

McClain Hall 204  
785-4227



### Experience:

- ▶ Faculty Member of the Institute for Reality Therapy, Canoga Park, Calif.
- ▶ Family Therapist for the Second Judicial Circuit Court, Kirksville
- ▶ Prevention Specialist for the Missouri Institute for Prevention Services, Kirksville

- ▶ Residence Hall Director for Northern Arizona University, Flagstaff
- ▶ Residence Hall Director for Northeast Missouri State University, Kirksville

### Education:

- Northeast Missouri State University
- ▶ Master of Arts in Guidance and Counseling
- ▶ Master of Arts in Humanities (In progress)
- Norith Texas State University
- ▶ Bachelor of Arts in Commercial Art

### How does Residential Living as an office affect the lives of the students?

Residential Living should be a big part of the student's life since they spend probably 80 percent of their time in the actual halls. The actual time they spend in the classroom is relatively small in proportion to when they go back (to the residence halls) and do their homework and study. The bottom line is that students spend a lot of their time in these facilities, these living environments. We should be a big part of their life and we're trying to be an even larger part through the creation of active learning centers within the halls and the colleges. This will provide opportunities for the residents to continue their education outside the classroom in a way that promotes student involvement and is enjoyable.

In relationship to houses/wings, we would like the students to feel the community impact and want to stay within the system. The residential living staff is examining the living environment and how we can make it feel more like home in the rooms, halls and lounge areas. Retention is very important to our office. We want the students to feel that they're getting a quality experience. Residents should want to be on campus because they will have more opportunities and conveniences than being off campus at this point in their lives.

In many ways, I think that our office will come in contact more often with students and probably have a greater opportunity to influence them. Life skills education and social learning will be provided by the residential living staff to prepare residents for when they leave campus. Again, it is important that residents be prepared for a quality and happy life where they can feel successful.

### What are your goals for the year?

Some of the goals my staff will be working with this year will include the feasibility of co-educational living. Specifically, we'll be looking at cost effectiveness and appropriate locations. Basically, that's going to be a big part of this semester's work load. The planning will involve input from students, staff and faculty to achieve the best perspective to create a logical plan, a plan that will foster the best transition for the University community.

Another area of concentration will be working with staff training. Our staff is usually trained in the spring and fall. In methodology of that training, we want to do more group areas of training instead of sporadic hit-and-miss—making them blend so they interrelate. Recruiting will be very important this year. We're always trying to bring in the highest quality of staff members at NMSU.

Other areas will be continuing the implementation of structure and accountability for what we are doing—making sure that our tasks are measurable and

time-specific. We will set up time lines that are reasonable for accomplishing our goals and discourage procrastinating. Residents are working with me on reorganizing the student hall government.

The Student Affairs staff, in conjunction with the Residential Living staff, is creating a peer advocates program, involving students trained to assist other students in the areas of drug and sexual abuse issues.

Other changes are, in working with Dean Nichols, that the student affairs—the minority services, the counseling services, the Greek affairs, the Student Health Clinic—are meeting and actually trying to create areas where issues and functions blend. One example is that of the peer advocate. That's something that is being addressed by Dr. Clydia Case and already Residential Living will have an impact because we will have to be providing the students and opportunities for training. We are already blending what both offices want to do with the program.

### How will your previous experience working with the University help you in this position?

When I was here before, Residential Living was under a different administrator in the program and the President. Having worked with closely with them, I understood and was a part of the direction for the residential living program. Knowing our past and having additional goals from President Warren, I believe that we will create a better program in views of education and retention.

Since leaving Northeast, I've been working with the court system, with the privileged as well as underprivileged families in the community. I'm enthusiastic to be back with my clinical counseling experience and what I've learned about drug and alcohol prevention education and legal systems and use that knowledge to help move the residential living program in different directions.

# Notables

**Jim Barnes**, professor of comparative literature, has had his poem, "Remembering Hiroshima and Propaganda," accepted for publication in the anthology of anti-Gulf War poetry *After the Storm*. The book, published by Maisonneuve Press, in Washington, D.C., will be out in January 1992.

**Gwendolyn Blotevogel**, assistant to the college professor in Missouri South Residential College, was awarded the 1990 Distinguished Thesis Award by the University of Missouri-Kansas City for her thesis "The Creation/Evolution Controversy: Scientific and Theological Response to Scientific Creationism (1980-1990)." The award is presented yearly to the thesis judged the most outstanding among all those submitted to the University that year.

**Marlow Ediger**, professor of education, has just returned from a three-week tour of the Soviet Union. He has had the following manuscripts published: "Mathematics, the Pupil, and the Curriculum," in the 1991 edition of the *Malaysian Mathematical Society Journal*; "Philosophy, Computers, and the Curriculum," in the 1991 edition of the *Calcutta (India) Mathematics Society Journal*; "The Psychology of Learning and the Math Curriculum," in the 1991 edition of the *Indian Journal of Mathematics Education*; and "Functions of the School Counselor," in the 1991 edition of *Resources in Education*.

**Jerri Kropp**, associate professor of family sciences, and **Ann Okenfuss**,

family sciences graduate student, presented a paper, "Developmentally Appropriate Assessment in Response to PL 99-457," at the Partnerships for Progress III Conference, Aug. 15, in Jefferson City, Mo.

**John Lee**, professor of music and head of the Division of Fine Arts, has been appointed chair of the International Council of Fine Arts Deans' Measurable Educational Outcomes Committee.

**Emmanuel Nnadozie**, assistant professor of economics, has had his article "The Political Economy of Islamic Penetration and Development in Niger" published in the *Scandinavian Journal of Development Alternatives*. This article was co-authored with Professor Margaret Dwight of the Ohio State University.

An exhibition of sculpture by **James Pauls**, associate professor of fine arts, is being shown through Sept. 30 at Culver-Stockton College in Canton, Mo.

**Dan Peterson**, director of bands, has been appointed for the fifth year as a consultant for the Pygraphics Software Corporation. Pygraphics Software is the leading manufacturer of software for marching bands and support software for public school music programs throughout the nation. Peterson has presented clinics in 19 states for Pyware Software. Peterson has also been appointed to the staff of Yamaha Bands Instrument Co. as a band and orchestra technician for the 1991-93 school

years. He will serve in the areas of marching bands and marching drumlines. His clinics will be offered to all colleges and universities, state band masters organizations and music dealers in a 13-state midwest region. This is his second appointment as a clinician for Yamaha. He recently presented clinics for the Missouri Bandmasters Convention and for Austin Public School band students in Austin, Texas.

**Joseph W. Rhoads**, associate professor of industrial science, served as a consultant to critique instructional presentations for the New Teacher Institute, Aug. 8, at the University of Missouri—Columbia.

**Rick Sluder**, assistant professor of justice systems, and Dennis Potts of Sam Houston State University had their manuscript "Will Police Legal Advisors and Agencies be Affected by the Supreme Court's Decision in *Burns Vs. Reed*?" published in the fall issue of *Police Liability Review*.

**Steve Smith**, assistant professor of mathematics, had his paper, "Maximum Sustainable Yield of a Nonlinear Population Model With Continuous Age Structure," published in the May 1991 issue of *Mathematical Biosciences*.

**Michael G. Tannenbaum**, assistant professor of biology, served on a grants review panel for the National Institutes of Health's Minority Biomedical Research Support program, Sept. 5-6, in Chevy Chase, Md.

# Notes

The 1991-92 **Blue Key** student phone directories are available in the Campus Bookstore and Patty's University Bookstore. Cost is \$2.

**\$750 scholarships** are available from the Federated Garden Clubs of Missouri, Inc. to junior, senior and graduate students pursuing studies in fields related to plants, gardening, conservation or environmental control. Applications are available in the Financial Aid Office, McClain Hall 100. Deadline is Oct. 18, 1991.

**The Career Planning and Placement Center** is offering the workshop, "A Recipe for Resumes and Cover Letters," 3:30-4:30 p.m., Oct. 1, in Violette Hall 252.

**The Career Planning and Placement Center** is presenting two teleconferences on Oct. 3. "Video Teleconference: What is Graduate School?" will air at noon in the SUB Tangerine Room and "Teleconference

on Interviewing Skills" will air at 6 p.m. in the SUB Tangerine Room.

**The Career Planning and Placement Center** is now open until 8 p.m. on Wednesday nights. No appointments are necessary.

**The Education Connection** will have meetings at 6 p.m. every second and fourth Mondays of the month in Violette Hall 121. Meetings are open to all students interested in education.

# Notes

**Delta Sigma Pi** is sponsoring a coed sand volleyball tournament for United Cerebral Palsy on Oct. 5 at the Days Inn. Play begins at 8 a.m. Cost per team is \$25. First prize is \$50, second is \$25 and there will be consolation prizes available. To enter a team, call Jim at 627-2828. Entry deadline is Sept. 28.

**The Lutheran Student Fellowship and Church World Service** are sponsoring the Crop Walk, a walk to fight hunger locally and around the world. The Crop Walk begins at 8 a.m., Oct. 5, at the Faith Lutheran Church. For more information, contact the Lutheran Student House at 665-6488.

**National Merit Scholarship** checks are now in and can be picked up Monday-Friday, 8:30 a.m.-4:30 p.m., at the Cashier's Window, McClain Hall. Scholarship recipients must be enrolled full-time and present a picture ID to sign for the check.

**The Student Activities Board** is sponsoring a Week End Get Away to Chicago, Oct. 18-20 (midterm break). Stops include the Chicago Art Institute, the Adler Planetarium, the Lincoln Park Zoo, the Sears Tower, the Field Museum of Natural History and a Chicago sport. Cost is \$69 with an SAB sticker and \$75 without. Sign up now through Oct. 8 in the SAB office in the SUB.

**All faculty** who have been competitive and distinguished scholars please contact Elsie Gaber, McClain Hall 102, 785-413, by Sept. 25.

**The Latter-Day Saint Student Association** is sponsoring an open panel discussion of the 101 myths about Mormons at 7 p.m., Oct. 7, in Violet Hall 121. The panel will include students and faculty. All are welcome.

**"The P.C. Fad: An open forum on Political Correctness"** will be held at 11:30 a.m., Oct. 1, in the SUB Alumni Room. The forum is sponsored by section 12 of English Composition II instructed by David Parthenheimer, assistant professor of English.

**Windfall**, NMSU's literary magazine, is now accepting submissions of poetry, short fiction, short drama, art and pho-

tography for the spring issue. Submissions should not include the submitter's name on the work. Please include name, address and the works' titles on a separate sheet. Deadline for submissions is Nov. 22. Mail to: Windfall, SUB.

**Applications** for the Master of Arts in Education program (MAE) are due by 4 p.m., Sept. 30, in the Graduate Office (McClain Hall 203). Students will be advised of the status of their applications before Thanksgiving. The spring deadline for MAE applications is Feb. 15, 1992. For more information, contact Amy Gates, Violette Hall 267J, 785-4239.

**The Catholic Newman Center** is sponsoring a Parents Day mass and chili supper on Sept. 28. Mass will begin approximately 30 minutes after the football game ends and supper will be served immediately following mass. Cost is \$2 for adults and \$1 for children under 12. This is open to all students and their parents.

**The faculty associates and staff** of Missouri North Residential College announce a call for papers for this year's Environmental Forum. They are seeking papers from NMSU faculty, staff and students that concentrate on an environmental issue, topic or theme. While presentations will be scholarly, they should not be overly technical. They will accept five papers to be read, one each, in the months of November, December, January, February and March of the 1991-92 academic year. Dates, times and locations will be announced at a future date. Presentations should be 30-40 minutes in length, with anticipated 20-30 minute question and answer period to follow. Proposals should be 150-250 words. All proposals will be read by the Environmental Forum Committee. An honorarium of \$100 will be awarded for those proposals accepted for the forum. Proposals should be submitted to: Dr. Dana DeLeware, College Professor, Missouri North College, 106 Missouri Hall. For more information, contact Dr. James Harmon, Baldwin Hall 274, 785-4087 or Dr. Keith Pavlischek, Missouri Hall 108, 785-5388.

**Counseling** is available to full-time University students through Professional Counseling Services, a private counseling center located downtown at 403 North Elson Street (2 blocks north of the First National Bank). Student's cost is \$5 for each private session and \$2 for each group session. Either the student's health insurance or the University will cover the rest of the cost. To make an appointment, call 665-1964. Sessions are strictly confidential. For more information, contact Clydia Case, coordinator of counseling services, McClain Hall 101, 785-4031. Dr. Case and her intern Laura Harris are available for consultation and can refer you to a range of supportive services on and off campus.

**The Catholic Newman Center** will have a bazaar all day, Nov. 9. They are currently reserving tables for anyone interested in selling their crafts or holiday collectibles that day. Contact the Newman Center for details. Limited space is available.

**The Career Planning and Placement Center** is now offering resume and cover letter reviews. Appointments are available every day. For more information, call 785-4353 or drop by the CPC, McKinney Center.

**Scholarships** of \$2,250 each are available for students considering a career in the nuclear utility industry from the National Academy for Nuclear Training. To qualify, you must have a minimum 3.0 GPA as of Jan. 1, 1992 and must have at least one, but not more than three academic years of study remaining. Information on additional requirements and application procedures are available in the Financial Aid Office, McClain Hall 100.

**Forestry and wood science students** at the junior level are invited to compete for scholarships of \$1,000 to \$2,000 from Northeastern Loggers Association. Applicants must submit an essay on the topic "A New Image for the Forest Industry: What Should It Be?" For more information, contact the Financial Aid Office, McClain Hall 100.

# This Week

## 23 MONDAY

- ▶ 6:15 p.m.—**Lambda Pi Eta** honorary speech communication society meeting, Ophelia Parrish 115A. Communication majors or anyone with 9 hours in communication are welcome to join. Everyone interested is welcome to attend.
- ▶ 7 p.m.—**Alpha Phi Sigma** international academic honor fraternity open meeting, Science Hall 124. Open to all students with 30 credit hours and a 3.25 GPA; also, Sept. 24. —**An Oral History of Traditional Northeast Missouri Farms**, presented by Lisa Grundel, sponsored by the Audubon Society, Science Hall 112
- ▶ 7:30 p.m.—**Rite of Christian Initiation of Adults**, a process of helping adults explore their faith and the Catholic Church, Catholic Newman Center, 709 S. Davis.
- ▶ 8 p.m.—**Solo piano recital** by William Blaine, Alvin M. Owsley Artist-in-Residence, Baldwin Auditorium, featuring music by Mozart, Schubert, Faure and Debussy. Admission is free.
- ▶ 8-10 p.m.—**NMSU Live Try-Outs**, SUB Activities Room. A piano will be available.

## 24 TUESDAY

- ▶ 7 a.m.—**Toastmasters International** speech and leadership organization first meeting of the year, Barnett Hall 222. Everyone is encouraged and welcome to attend. Admission is free and a continental breakfast will be served.

## 25 WEDNESDAY

- ▶ **Peat Marwick**: Interviews
- ▶ **IBP, Inc.**: Interviews
- ▶ 2-6 p.m.—**Volunteer Fair '91**, SUB Activities Room
- ▶ 4:30-6:30 p.m.—**Voter registration**, Ryle Hall cafeteria
- ▶ 6-9 p.m.—**Auditions** for the Reader's Roundtable presentation of "Relationships Are Hell," a collection of three short stories adapted for chamber theatre performance, Ophelia Parrish 208. For more information, contact June

Sullivan at 785-4481 or Tim Naegelin at 627-3805.

- ▶ 9 p.m.—**NEMO News** presents a half hour of the best music videos produced by NMSU students, Cable Channel 24

## 26 THURSDAY

- ▶ **Ernst & Young**: Resumes due for prescreening
- ▶ 11 a.m.-2 p.m.—**Voter registration**, SUB
- ▶ 5-7 p.m.—**Auditions** for the Reader's Roundtable presentation of "Relationships Are Hell," a collection of three short stories adapted for chamber theatre performance, Ophelia Parrish 208. For more information, contact June Sullivan at 785-4481 or Tim Naegelin at 627-3805.
- ▶ 6:30 p.m.—**Phi Beta Lambda** open meeting, Violette Hall 119. Open to anyone interested in business.
- ▶ 7:30 p.m.—**NEMO News** presents a half hour of the best music videos produced by students, Cable Channel 24
- ▶ 8 p.m.—**"First Name: Carmen"**, Jean-Luc Godard foreign films (French) series, Baldwin Auditorium. Admission is free.

—**Political Science** open meeting, McClain Hall 210. Everyone is welcome.

- Black Law Student Association** open meeting, SUB Tangerine Room. All majors are welcome.
- ▶ 9 p.m.—**Service auction**, sponsored by the NMSU Bulls Rugby Club, SUB fountain
- ▶ 9-10:30 p.m.—**NMSU Live Try-Outs**, SUB Activities Room. A piano will be available.

## 27 FRIDAY

- ▶ **Graduation applications** for undergraduates due
- ▶ **Last day** to drop first block courses
- ▶ **Last day** to receive 70% reduction in enrollment fees
- ▶ 7 and 9:30 p.m.—**"Silence of the Lambs,"** SAB movie, Baldwin Auditorium. Admission is \$2 or free with an SAB sticker

## 28 SATURDAY



- ▶ **Parents Day**
- ▶ **Entry deadline** for the Delta Sigma Pi Coed Sand Volleyball Tournament. See Notes.
- ▶ 9-10 a.m.—**Parents Day coffee and information hour**, Student Union Building. Tickets for the day's events will be available.
- ▶ 9 a.m.-3 p.m.—**Open house**, the Independent Learning Center of the Division of Nursing, Kirk Building 130. Free blood pressure screening will be provided by nursing majors. Open to all parents, families, visitors and students.
- ▶ 10 a.m.-dusk—**Red Barn Arts and Crafts Festival**, on the Square (downtown). More than 100 exhibitors are participating.
- ▶ 10-11 a.m.—**Parents Day general assembly**, Baldwin Auditorium
- ▶ 10 a.m.-noon—**Open house**, Wesley House Campus Ministry
- ▶ 11 a.m.-12:30 p.m.—**Rappelling**, sponsored by the Division of Military Science, rappelling tower.
- ▶ 11 a.m.-1 p.m.—**Parents Day tailgate lunch**, Red Barn Park; all residence hall cafeterias will be closed for lunch.
- ▶ 1:30 p.m.—**Bulldog football** vs. Emporia State University, Stokes Stadium
- ▶ 3:30 p.m.—**Women's soccer** vs. Mercyhurst College (Penn.), soccer field
- ▶ 8 p.m.—**Craig Anton**, comedian, Baldwin Auditorium. Admission is \$1 per person.

## 30 MONDAY

- ▶ 4 p.m.—**Application deadline** for the Master of Arts in Education program, McClain Hall 203