

# TRUMAN

A Weekly Publication of Truman State University

T O D A Y



Vol. 4 No. 47

March 14, 2000

TRUMAN STATE UNIVERSITY  
**DISTINGUISHED  
VISITING  
SCHOLAR**

## Robert Pinsky Schedule of Events

### March 21

**7:30 p.m.**, Public  
Poetry Reading,  
Violette Hall 1000  
**8:30 p.m.**, Public  
Reception,  
Violette Hall  
Second Floor Lounge

### March 22

**12 p.m.**, Faculty  
Development  
Luncheon, SUB  
Down Under  
**7:30 p.m.**, "An  
Explanation of  
America,"  
Ryle College Lounge  
*Book signing to follow*

### March 23

**10:30 a.m.**, "The  
Inferno of Dante,"  
SUB Georgian Room

For more information,  
call 785.4016.

## Third Distinguished Scholar to Visit Truman

Poet Laureate Robert Pinsky will visit campus March 21-23 as Truman's third Distinguished Visiting Scholar for the 1999-2000 academic year. Pinsky was selected to serve an unprecedented third term as U.S. Poet Laureate in 1998, and is the 39th individual to hold the seat.

Pinsky is currently focusing his efforts toward a "Favorite Poem Project," which is the production of an audio/video archive of thousands of Americans reading their favorite poems. Pinsky hopes to promote poetry in schools and to send the message that poetry is for everyone's enjoyment. The project has stimulated over 400 community readings and nearly 18,000 submissions, and the initial phase of the tapes will be presented to the Library of Congress at a special bicentennial conference from April 3 to 4, 2000.

Pinsky is the author of numerous books, many of which have won multiple awards. *The Figured Wheel: New and Collected Poems 1966-1996*, won the Ambassador Book Award of the English Speaking Union, the 1997 Lenore Marshall Poetry Prize, and is a nominee for the Pulitzer Prize in poetry. His book-length poem *An Explanation of America*, was awarded the Saxifrage Prize when it was first published in 1980 and has since been published by Princeton University Press. William Pritchard called Pinsky's early works, "the best work by any younger poet within recent memory."

*History of My Heart*, another work by Pinsky, was chosen for the 1985 William Carlos Williams Prize of the Poetry Society of America. In addition, *The Inferno of Dante*, Pinsky's book of translation, appeared on the Best Seller's List of *The Boston Globe* and *New York Newsday*. His



collection of poetry, *Jersey Rain*, is due out from Farrar, Straus & Giroux later this year.

Pinsky also currently serves as poetry editor of *Slate*, an on-line magazine, and regularly contributes to "The News Hour with Jim Lehrer" on PBS. In April 1999 Pinsky appeared at the White House for a series of presentations celebrating American creativity and ingenuity.

Pinsky attended Rutgers College and Stanford University, where he held a Stegner Fellowship in Creative Writing. He is currently a professor in the graduate writing program at Boston University and resides in Cambridge, Mass., with his wife, Ellen.

## Minner Hired as Head of Education Division

Sam Minner has been named as the new Head of the Education Division, Vice President of Academic Affairs Garry Gordon announced Monday. Minner will begin his contract with Truman on July 1, 2000.

With more than 23 years in the field of education, he has served in both faculty and administrative roles. Since 1997 Minner has held the James H. Quillen Chair of Excellence in Teaching and Learning at East Tennessee State University in Johnson City. From 1988-1997 he served in various capacities at Northern Arizona University in Flagstaff, including a four-year stint as chair of the Education Department. He received the prestigious President's Award from that institution in 1996. Minner began his career as a special education/elementary teacher.

He received his bachelor's and master's degrees from Southern Illinois University in Edwardsville and completed his doctoral work at the University of Arizona in Tucson. He has over 70 publications and \$2.6 million in grants to his credit.

Minner and his wife, Joan, have two children, Brook, 21, and Sammy, 8.

13TH ANNUAL  
UNDERGRADUATE  
RESEARCH  
SYMPOSIUM

8:00 a.m. - 8:15 p.m.  
Thursday, March 23  
Student Union

The Symposium showcases student involvement and the diversity of research on campus.

Students, faculty and staff are invited to attend any of the presentations. For more information, contact James Padfield at 785.4406.

JOSEPH B. WALTHER

associate professor of  
communication studies  
RENSELAER  
POLYTECHNIC  
INSTITUTE



March 15 Lectures

10:30 a.m.

"Internet Addiction: Fact or Fiction?"

Violette Hall 1000

12:30 p.m.

"Innovative and Potential Uses of the Internet in the Classroom"  
SUB Governors' Room  
Faculty Only

7 p.m.

"On the Internet No One Knows You're a Dog: A Multidisciplinary Perspective on the Transformative Aspects of Communication Technology"  
Violette Hall 1000

Call 785.4481 for details

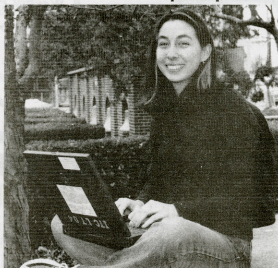
## Parent Donations Provide New Laptops

Truman students now have access to laptop computers thanks to donations by parents to the 1998 Parents Council project. Parent donations have provided several new resources in the past few years, including a multi-media computer lab in Violette Hall and technology for the University Career Center and Pickler Memorial Library.

Six laptop computers, five PCs and one Macintosh are now available to Truman students to check out and use for group presentations and other class work. The computers are equipped with the Microsoft Office Suite, including Word, Powerpoint, Excel and other software.

"There has been more and more interest in laptop computers," Chief Information Officer Richard Coughlin said. "This is a resource the University could not provide without private gifts from Truman parents."

The laptops are available from the Instructional Technology Center in Kirk Building 133; however, students are encouraged to call in advance to make reservations. Laptops may be checked out with a student ID for a maximum of 46 hours, 22 hours during the last three weeks of the semester. This schedule provides a two-hour maintenance window so that computers



Freshman Bethany Ordaz checks out a new laptop. may be reimaged to prevent viruses and clear any software that may have been loaded temporarily. Laptops are available at 3 p.m. and must be returned by 1 p.m. on the due date. They are designated for student use only.

Two data projectors will also be available later this year. The projectors are used in conjunction with the laptop computers to present Powerpoint slides and other data to large groups. Right now, four earlier models of the LCD panels are available for this purpose.

## Military Science Presents Colin Powell

The Military Science Department of Truman State University and the Reserve Officer Association will present General Colin Powell live via satellite from Washington, D.C. at 12:30 p.m., March 21, in the SUB Governors' Room.

General Powell's program will focus on core values, duty, honor, courage, leadership and integrity. He may also speak about his experiences as Chairman of the Joint Chiefs

of Staff, Desert Shield/Desert Storm operations and his current humanitarian efforts with Empower America.

The program will include opportunities for viewers to ask questions. To do so, viewers may e-mail questions to the studio at [powell@roa.org](mailto:powell@roa.org) or call 800.528.2090 at the time of broadcast. Two phone lines will be available in the Governors' Room. For more information, call Major Anthony at 785.4453.

## Census 2000 Forms to Arrive This Week

Census takers will be distributing Census 2000 forms throughout Adair County beginning this week.

About 83 percent of respondents should expect to receive a short form, which includes the subject's name, sex, age, relationship, race, and housing situation. The Census 2000 short form will be the shortest form in 180 years.

One out of six households will receive a longer form, with questions pertaining to 34 subjects including ancestry, employment and

disability. It takes about 35 minutes to complete. The long form provides socio-economic details needed for various government programs and federal requirements. Locally, community leaders use the long form to plan a wide range of activities such as neighborhood revitalization and economic development.

Gathering an accurate census count is crucial for Adair County since federal and state funds are distributed based on census figures. Forms should be returned by April 1.

**ADAIR**  
**COUNTS**

U.S. CENSUS 2000

Mark it. Mail it.

## Notables

**The Truman Debate Team** won two national championship titles at the National Parliamentary Debate Association's National Championship Tournament at Creighton University in Omaha, Neb., on Mar. 8-12. More information will follow next week.

**Sal Costa, assistant professor of psychology**, recently received the Outstanding Greek Professional Award from the Mid-American Greek Council Association. The purpose of this award is to recognize a Greek professional who has made a significant contribution to the Greek community within the Mid-America region.

**Ryan Kennedy, junior political science major from Excelsior Springs, Mo., and Jacob Stutzman, junior communication arts major from St. Louis**, took second place in the national collegiate honorary championship in parliamentary debate Feb. 28. They lost to a team from William Carey College by one ballot. In addition, Kennedy placed third in the nation in impromptu speaking and Stutzman placed third in parliamentary debate. Overall, Truman finished eighth in debate sweepstakes, combined debate and individual events rankings.

**Huping Ling, associate professor of history**, published an article titled "Family and Marriage of Late-19th Century Chinese Immigrant Women" in the *Journal of American Ethnic History* Winter 2000 issue. Her other article, "Myth and Reality of St. Louis Chinatown," has also been accepted for publication in *The New Missouri History* anthology.

**Christopher Maglio, associate professor of counseling, and Patrick Peck, assistant pro-**

## Early Admission to Law School Available

Truman, in cooperation with the University of Missouri-Columbia School of Law, is offering an Honor Admission Program for Truman students.

Qualified applicants will be guaranteed admission to the Missouri School of Law as Judge Ross T. Roberts Scholars, and will receive at least \$1,000 in scholarships upon admission. Judge Roberts was a UMC Law School graduate who served with distinction on the U.S. Federal Court for the Western District of Missouri.

There is no application deadline for the

professor of counseling presented "Supervising the PLPC and CIT: Counseling vs. Psychologist" at the annual meeting of the American Counseling Association of Missouri in St. Louis. Maglio also presented "Close Encounters of the Intimate Kind: An Exploration of the Effects of Parental Divorce on College Students" with counseling graduate Christopher Yunick, and "An Exploration of the Relationship Between Perceived Paternal Acceptance and Rejections and College Students' Self-Esteem" with counseling graduate Christy Grissom.

**John Martinez, sophomore music/pre-secondary education major from Northfield, Minn.; Karista Koehler, senior biology major from St. Louis, Mo.; and Amari Stuart, freshman music major from Clark, Mo.**, were chosen to perform solos at this year's Gold Medal Concert on March 19. The students were chosen after several rounds of competitive auditions to perform with the Truman Symphony Orchestra.

**Eric R. Schreiter, senior chemistry major from St. Charles, Mo.**, has been selected to present a scientific paper at the American Chemical Society National Meeting in San Francisco March 26-31. More than 8,800 papers will be presented at this meeting and over 18,000 people are expected to attend. ACS is the largest scientific society in the world.

**Truman's Panhellenic Council** received awards from the Mid-American Greek Council Association for membership recruitment, philanthropy, community service and council management. **The Interfraternity Council** also received an award for self-governance and judicial affairs.

program, but to be eligible students will need to apply to the program before completing 90 credit hours of college-level coursework, prior to taking the Law School Admission Test. Students must also have received an ACT score of 30 or higher or SAT composite score of 1300 or higher. To maintain admittance to the program, students must graduate from Truman with at least a 3.30 GPA.

For additional information and application materials, call the Division of Social Science at 785.4636.

## DISTINGUISHED VISITING SCHOLAR



**KEITH DEVLIN**  
Mathematician  
Author  
Researcher

Returns to Campus  
**March 27-31**

## MEDICAL SCHOLARSHIPS AVAILABLE

### Truman-KCOM Osteopathic Scholarship

Five advancing Truman sophomores with a minimum science GPA of 3.4, ACT composite of 28 or better, a B in Biology 107, 108, Chemistry 120, 121, and English 190, and enrollment in Chemistry 329 will be offered acceptance to KCOM upon achievement of certain academic standards.

Applications are available in  
Magruder Hall 118B.  
**Due March 24**

### Truman-University of Missouri-Columbia Rural Scholars Program

Two advancing Truman freshmen, plus two alternates, will be selected for this program. Applicants must have a small town or rural background, an ACT composite score of at least 30, and provide evidence of high academic achievement and extracurricular activities. Applications are available in Magruder Hall 118B.

**Due May 1**

# Notes

**The Kohlenberg-Towne Lecture, originally scheduled for March 20,** has been postponed until a later date TBA, due to a scheduling conflict of the lecturer.

**The Faculty Development Lunch Series continues** from 12:30-1:30 p.m., March 15, in the SUB Governors' Room. "Innovative and Potential Uses of Internet in Classroom Environments," will be presented by Joseph Walther, associate professor in communication studies at Rensselaer Polytechnic Institute.

**An informational session on the 21st Century Leadership Training Program will be held at 3:30 p.m.,** March 15, in Violette Hall 2451. Four Truman women will be selected to attend this program designed to teach women leadership skills. It will take place at the University of Missouri-St. Louis from May 21-26. For more information, or to obtain an application, call Cynthia Rowland at 785.4106.

**The Physics Department will hold a colloquium at 1:30 p.m.,** March 16, in Barnett Hall 251. Ian H. Redmont from the department of physics at St. Louis University will present an advanced talk on insights of 20th century physics.

**The University Art Gallery will hold a reception at 7 p.m.,** March 16, for its exhibit titled "The Subversive Needle."

**Sheri Mattson will perform a faculty recital at 8 p.m.,** March 16, in Baldwin Auditorium.

**Free income tax assistance is being offered by the Accounting Club and Beta Alpha Psi from 8 a.m. to 4 p.m.,** March 18, April 1 and April 8 in Violette Hall 1010. All faculty, students and community members may use this service.

**The Truman Symphony Orchestra will perform its annual Gold Medal Concert at 3 p.m.,** March 19, in Baldwin Auditorium. The program will showcase three outstanding student performers from the music department who were chosen after several rounds of auditions. Admission is free. For more information call Sam McClure at 785.4434.

**The McNair Program will present workshops and question/answer sessions on mentoring students** for all faculty from 11 a.m. to 12:30 p.m., and 12:30-1:30 p.m., March 20, in the SUB Conference Room. Dr. Greg Aloia of Illinois State University will be speaking about methods in becoming a more effective mentor and enhancing the mentor/mentee relationship. Please RSVP to the McNair Program by noon on March 16 at 785.5393.

**The German Club will present a video tour of Germany at 4:30 p.m.,** March 20, in McClain 306. All students are welcome to visit "The Romantic Road," a 30-minute video of cultural insights and practical tips about Germany.

**The Collegiate Farm Bureau and University**

**Career Center will host an agriculture career panel at 4 p.m.,** March 21, at the Career Center. Ashley Davison, USDA soil conservatist; Ken Perkins, AFS Services agronomist; and Mike Kelly, Kirksville High school vocational/agriculture instructor, will be panel members. For more information call 785.4353.

**The Student Activities Board will present "African Acrobats" at 7 p.m.,** March 22, in Baldwin Auditorium. For tickets and more information call 785.45AB.

**A Women's Studies Conference, "Women on the Edge," in honor of Women's History Month,** will be held from March 23 to 25 in Violette Hall. The event is sponsored by the divisions of Language/Literature and Social Science. A complete schedule will appear in the next issue of the *Truman Today*.

**Nomination applications for the 2000 Leadership Awards are due by 4:30 p.m.,** March 24, in the CAOC office. Twelve leadership awards will be presented at the Leadership Recognition Program at 7 p.m., April 9, in the SUB Georgian Room. Several awards for students, organizations and advisors are available. Applications are available in the CAOC office, lower level SUB.

**The Division of Social Science is conducting a workshop titled "Deciding About Graduate and Professional Schools" for sophomore and junior social science majors at 2:30 and 3:30 p.m.,** March 29, in the SUB Alumni Room. The workshop will outline steps students must take to keep their graduate school options open.

**The application deadline for Language and Literature Summer and Fall 2000 internships/practicums is April 14.** Applications can be found in the Lang/Lit Division office and must be submitted to David Fortney's mailbox in McClain Hall 311 by 5 p.m. For more information contact David Fortney at 785.4415.

**Detours winter issues are now available.** Cost is \$3.50 per issue or \$10 for a subscription. *Detours*, "an explorer's guide to the midwest," is a student-produced publication. Magazines are available at the Truman Bookstore, Patty's University Bookstore, Edna Campbell's Book Store and Hastings. For subscription or advertising details call 785.7438.

**CDs of Truman's Chorus and Symphony Orchestra's performance of Handel's Messiah are available for \$10 at the cashier's window in McClain Hall.** Call 785.4443 for details.

**Garden plots will be available at the University Farm for faculty, staff and students.** Standard plots are 300 square feet; tillage and water at the site is provided. To reserve a plot contact David Leszczynski at 785.4411 or Barnett Hall 156. Participants will be notified of assignments ASAP.

# On Campus

**15 WEDNESDAY**  
10:30 a.m.-"Internet Addiction" lecture, Violette Hall 1000; see p. 2.  
12:30 p.m.-Faculty Development Luncheon, SUB Governors' Room; see Notes  
2 p.m.-Softball vs. Columbia College  
3:30 p.m.-21st Century Leadership Program informational meeting, Violette Hall 2451; see Notes  
7:00 p.m.-"Internet" lecture, Violette Hall 1000; see p. 2.

**16 THURSDAY**  
7 p.m.-University Art Gallery reception; see Notes  
8 p.m.-Faculty Recital, Baldwin Auditorium; see Notes

**17 FRIDAY**  
TBA-SAB movie, *The Sixth Sense*, Baldwin Auditorium

**18 SATURDAY**  
12 p.m.-Baseball vs. South Dakota  
8 a.m.-Income Tax assistance, Violette Hall 1010; see Notes

**19 SUNDAY**  
1 p.m.-Baseball vs. South Dakota  
3 p.m.-Truman Symphony Orchestra Gold Medal Concert, Baldwin Auditorium; see Notes

**20 MONDAY**  
11 a.m.-McNair Program, SUB Conference Room; see Notes  
4:30 p.m.-Video tour of Germany, McClain 306; see Notes

**21 TUESDAY**  
12:30 p.m.-Colin Powell teleconference, SUB Governors' Room; see p. 2.  
2 p.m.-Softball vs. SIUE  
4 p.m.-Agriculture career panel, Career Center; see Notes  
7:30 p.m.-DVS poetry reading, Violette Hall 1000; see p. 1.

# Faculty/Staff Campaign Giving Continues to Climb

A record 595 faculty and staff members contributed to the Truman State University Foundation this year during the 2000 Faculty/Staff Campaign, bringing Truman's participation rate up to a record 73% from 71% last year.

"Faculty and staff in the President's Office, Public Safety and the Business Office deserve special recognition. Each of these areas had 100% participation again this year," said Jeff Romine, campaign co-chair.

Participation is key because corporations and foundations look at faculty/staff support as one factor when awarding large grants. "Many of our faculty and staff members switched from writing a check to payroll deduction this year. Giving monthly is a painless and convenient way to support the fund, division or athletic team of your choice," explained Vonnie Nichols, campaign co-chair.

Faculty and staff contributions help provide endowed scholarships, academic division funding and unrestricted gifts. In addition, they are used to support the Bulldog Fund and the Kohlenberg Lyceum Series.

## Campaign Contributors

Von Abbott

Tim Acton

Michael Adams

Nabil Alghalith

Carrie Allen

Stephen Allen

A. Kay Anderson

John Applegate

Mark Appold

Charlie Apter

Jeffrey Arabas

William Ashcraft

Nancy Asher

Robert Ashmore

Sharon Austin

Constance Ayers

Michelle Baier

Donna Bailey

Wayne Bailey

Dean Baker

Carl Baldwin

Steve Baldwin

Kevin Ballanger

Timothy Barcus

Jim Barnes

Richard Barnes

Teresa Barnes

Tim Barrickman

Ray Barrow

Sue Barrow

Martha Bartter

Russell Baughman

Jon Beck

Juanita Becker

Marc Becker

Mary Beersman

Benjamin Bennani

Catherine Bennani

Ernest Bereman

Anne Bergey

Richard Berry

Shawna Berry

David Bethel

Alfred Bilbao

Vonnie Bird

Michael Bird

Nancy Bissey

Kathryn Blair

Beverly Blodgett

Michael Blum

Elaine Boda

Joan Bohac

John Bohac

Larry Boleach

Jack Bowen

Michelle Boyd

Elizabeth Bradley

Ruth Bradshaw

Kathryn Brammall

Matthew Brantner

Michele Breault

Marijke Breuning

Robert Brochu

Steve Brookhart

Clifton Brown

Joyce Brown

Lana Brown

Sally Browning

Thomas Bultman

Stanley Bunfill

Joyce Burnett

Jerry Bussey

Khamthoune Butts

Robert Caccioppo

Wanda Cagle

Debbie Caldwell

David Cameron

Mike Cameron

Mark Campbell

Michael Cannon

Thomas Capuano

Linda Caraway

Scott Carriker

Kenneth Carter

Lynn Carter

Debra Cartwright

Jeanie Casady

Tim Cason

Sherry Cass

Bradley Chambers

Melody Chambers

Xiaotian Chen

David Christiansen

Holly Christy

Kay Clapp

E. J. Clarence

Barb Clark

Peggy Clark

David Clithero

Ellen Clithero

Paula Cochran

John Cochrane

Clyde Cody

Linda Colton

Kathy Conner

Laura Cook

Marsha Cook

Royce Cook

Tina Cook

Sally Cook

Cavit Cooley

Cynthia Cooper

Matt Copeland

Michael Corrick

Richard Coughlin

Carolyn Cox

Paul Crabb

Cheryl Cragg

Kathy Crisp

Melanee Crist

Karen Croarkin

Robert Cummings

Ralph Cupelli

Larry Daniels

Susan Daniels

Sherry Dare

Ruthie Dare-Halma

Doug Daubert

Rebecca Daugherty

Douglas Davenport

Linda Davenport

Janet Davis

Michael Davis

Ramona Davis

Adam Davis

Andrea Davis

Elaine DeJovin

Dana Delaware

Sarah Delaware

Elizabeth Delmonico

Ralph Detweiler

Julie DeVries

Maria DiStefano

Emily Dittmeier

Elaine Doak

Kim Donovan-Fallas

Keith Doubt

Susan Doubt

Lois Dover

Michele Drewes-Ralston

Vicki Duck

Tiffany Easley

Brian Easley

Martha Edwards

Becky Eggering

Glen Egley

Matt Eichor

Sherry Eitel

Nancy Elliot

Scott Ellis

Kathy Elesa

Sandra Fleak

Scott Fleming

Stephanie Fore

Jeaneette Foreman

David Fortney

Jesse Fortney

Scott Fouch

Richard Freeman

Donna Fude

Jeffrey Gall

Sheila Garlock

Arlie Garrett

Alan Garvey

Patricia Gately

Andrew Gensler

Marilyn Gibbons

Glen Giboney

Lou Ann Gilchrist

Neil Gilchrist

David Gillette

Michelle Giovagnoli

Marianna Giovannini

Mary Giovannini

Dorian Gleason

Michael Goggin

Deanna Gonnerman

Janet Gooch

Judy Gooch

Warren Gooch

Linda Gordon

Garry Gordon

Robert Graber

Marcy Graham

John Green

Eldon Grissom

Stephanie Grollman

Stephen Grollman

Janice Gruber

David Gruber

Keith Harrison

Rebecca Harrison

Wanda Hartsock

Jason Haxton

Barbara Heard

Dan Heater

Teresa Heckert

James Hehir

Aimee Hellweg

Julia Hempel

Oscar Hernandez

Jose Herrera

Brenda Higgins

Ted Hilgeford

Traci Hill

Daniel Hite

Robert Hoerrmann

Wolfgang Hoeschle

David Hoffman

Nancy Hoffman

Victor Hoffman

John Hoffmann

Ruby Hollenbeck

Timothy Honomichi

Elisabeth Hooper

Liz Hopkins

Eric Howard

Grace Howell

Judy Howerton

Brian Hudnal

Thomas Hueber

Deanna Hunsaker

Larry Hunter

Connie Ikerd

John Ishiyama

Joanne Jackson

Connie Jacobs

Ray Jagger

Alfreda James

Jack James Jr.

Kimberly Jarvis

Melody Jennings

Wenshan Jia

Pamela Johnson

Roger Johnson

Bob Jones

Bryce Jones

Gregory Jones

Amanda Jones

Gary Jones

Royce Kallerud

Donald Kangas

Rodney Keller

Heather Kelley

Jacquelin Kelly

Michael Kelrick

Robert Kelsey

Ruth Kempf

Pete Kendall

Maura Kendrickan

Rhoda Kennard

Debra Kerby

Lesia Kerlin

Glen Ketterlinus

*The success of this campaign is a direct result of the time and energy volunteer coordinators spent personally contacting their colleagues and talking with them about why their gifts are important.*

—President Jack Magruder

Brenda Embree

Cheryl Engber

Michael Engber

Carol England

John Erhart

Barbara Espe

Gary Fagen

Tim Farley

Cindi Farmer

Joyce Ferguson

Suren Fernando

Laura Fielden

Jerry Findling

Aaron Fine

Jan Fishback

Robert Fisher

Susan Guffey

Sharon Hackney

Mariquit Hadwiger

Stephen Hadwiger

Kenneth Hahn

Trudy Halley

Joe Hamilton

Susan Hamilton

Todd Hammond

Pyeong Eui Han

Mark Hanley

Helen Hanlin

Jimmy Hanlin

Leigh Hanson

James Harmon

Brenda Killen	Karen McClaskey	Melissa Passe	Sue Sayre	Dean Van Galen	Teresa West
David Kincaid	Rebecca McClure	Eric Patterson	Tim Scherrer	Winston Vandenhooft	ShannonWestermeier
Nedra Klein	Sam McClure	Seymour Patterson	Debra Schertzer	Anthony Vazzana	Kimberly Western
Steven Klein	Deborah McCormick	Claire Peckosh	Joyce Schmitz	Dana Vazzana	Larry Western
Barbara Kline	Melissa McCoy	Genevieve Perkins	Karl Schneider	Michael Vogan	Teresa Wheeler
Debra Kling	David McCurdy	Gwen Perrachione	Jack Schrader	Bryan Waddle	Kevin White
Shaun Klingsmith	Dana McDowell	John Perrachione	Kristy Schroeder	Rhonda Waddle	Aubin Whitmer
Patrice Kluge	Sharon McGahan	Dan Peterson	Peter Schroeder	Cheryl Walker	Clad Whitton
Ronald Knight	Gayla McHenry	Rueben Peterson	Wayland Schue	Torbjorn Wandel	Chris Widmeyer
Cornelis Koutstaal	David McKamie	Ervinetta Pettit	David Schutter	Qi Wang	Cathy Wiggins
Stacy Kraus	Shirley McKamie	Diane Pfeifer	Katharina Scofield	John Ware	Kathy Williams
Clifton Kreps	Janna McLean	Julie Phillips	Antonio Scuderi	Melissa Ware	Tracy Williams
Kathryn Kuhlman	Michael McManis	Linda Phillips	Michael Seidel	Debbie Watson	Douglas Winicker
Billy Kuntz	James McNabb	Blake Pigg	James Shaddy	Denise Watson	Barbara Winn
Lisa Kuntz	Marissa McNally-Haydar	Kelly Pigg	Mary Jane Shapiro	Melanie Webber	Heinz Woehlk
Gloria Kwok	Gerald McVay	Robin Pillen	Patrice Shaw	Sandra Weber	Mary Lou Woehlk
Susan Lagrassa	Joyce McVay	Fontaine Piper	Honglan Shi	Joann Weekley	Derry Woehler
Brian Lamp	Cheryl Miller	Vera Piper	George Shinn	Dick Weerts	Jay Wolmering
Christopher Lantz	Jason Miller	Stephanie Powelson	Susan Shoaff-Ballanger	Glenn Wehner	Melinda Wood
Val Larsen	Pat Miller	Barry Poyner	Gerry Shoop	Vicky Wehner	Howard Worcester
John Larson	Debra Miller	Catherine Poyner	Gregg Siewert	Ann Weidner	Phillip Worley
Sharon Lay	Devon Mills	Adriene Presley	Maureen Slaughter	Mark Weidner	Carolyn Wriedt
Dennis Leavens	Timothy Mills	Paula Presley	Dana Slavin	Albert Weitz	Wenying Xu
Lucy Lee	Judi Misale	Alanna Preussner	John Sloop	Warren Wells	Linda Yager
Aaron Lehmann	Antonio Mister	Arnold Preussner	Pat Smiser	Sally West	Danny Zimmer
David Leszcynski	Cinda Mitchell	James Przybylski	Daniel Smith		
Patricia Leslie	Malia Mondy	Joy Pugh	Jonathan Smith		
Liyan Liao	Anne Moody	B. J. Pumroy	Martha Smith		
Robert Libby	Brenda Moore	Carol Rice	Mary Jane Smith		
Susan Limestall	Diane Moore	John Ramsbottom	Randall Smith		
Jason Lin	Julianna Moore	Mary Ramsbottom	Steven J. Smith		
Thomas Linares	Jean Moots	David Rector	Steven R. Smith		
Ian Lindevald	Shirley Morahan	Marsha Redmon	Doris Snyder		
Regina Lindhorst	Lanny Morley	Thomas Reed	Glenna Somerfield		
Patrick Lobert	Lonny Morrow	Luann Regagnon	T. W. Sorrell		
Carol Lockhart	Rebecca Moyer	Nancy Reschly	Lisa Sprague		
Michael Lockhart	Judy Mullins	Steven Reschly	Timothy Stegemann		
Theresa Lorey	Margie Mullins	Donna Rhinesmith	Matt Steinberg		
Doug Ludolph	Kyung Mun	Marc Rice	Jane Story		
Judy Lundberg	Jimmie Murdock	Irene Richardson	Kenneth Strahm		
David Lusk	Colleen Murphy	Diane Richmond	Millie Strong		
James Lyons	Kim Murphy	Gregory Richter	Werner Sublette		
Yinfu Ma	Wynona Murphy	Kathy Rieck	Chein-Hsing Sung		
Andrea Maag	David Murphy	Dana Roark	Lucinda Swartzell		
Mimms Mabee	Lori Murray	Daniel Robbins	Shelby Sweeney		
Sylvia Macauley	Susanne Neely	David Robbins	Laura Tamakoshi		
Christopher Maglio	Jessica Neighbors	Lynn Roberts	Roy Tanner		
Jack Magruder	John Neitzke	Tammy Roberts	Norbert Tatro		
Debbie Maize	Roger Nelson	David Robinson	Robin Taylor		
Tim Maize	Russell Nelson	Peter Rolnick	Heidi Templeton		
Nancy Majewski	Steven Nelson	Janet Romine	Patricia Teter		
Daniel Mandell	Matthew Nelson	Jeff Romine	Alex Tetlak		
Kay Mantia	Susan Nelson	Marilyn Romine	Bertha Thomas		
Jennifer Marcus	Barbara Newcomer	Deanna Rood	Bridget Thomas		
Tom Marshall	Karin Nicholls	Jody Rowe	Connie Thomas		
Joan Martin	David Nichols	Cynthia Rowland	Clinton Thompson		
Robert Martin	Vonnie Nichols	Sharon Russell	Laura Thrasher		
Keeth Matheny	Emmanuel Nnadozie	Janice Saffir	Kimberly Titus		
Joan Mather	Eva Jane Noe	Dana Safley	Robert Tobia		
Charlotte Mathews	Lee Orchard	Nancy Sanders	Paulina Tramel		
Jennifer Matteson	Peggy Orchard	Frank Santoro	Julie Treasure		
Jerry Mayhew	Sara Orel	John Sapko	Beverly Tremain		
Meredith McCannon	James Padfield	Judy Sapko	Thomas Trimborn		
Paula McCartney	Paul Parker	Mustafa Sawani	James Turner		
Andrew McClanahan	Linda Parsons	John Sayre	Laurie Turner		
Rebecca McClanahan	Ronnie Partin	Rickey Sayre	Kathy Turpin		

### Campaign Coordinators

Campaign coordinators who had

100% participation are indicated with an asterisk (\*) behind their names.

Von Abbott*	Judy Howerton
John Applegate	Pete Kendall
Nancy Asher	Ron Knight
Donna Bailey	Chris Lantz
Joan Bohac	David Leszcynski*
Jack Bowen*	Ian Lindevald
Ruth Bradshaw	Patrick Lobert
Sherry Cass*	Carol Lockhart
David Clithero*	Tim Maize
Cynthia Cooper	Karen McClaskey
Melanee Crist*	Janna McLean
Sue Daniels	Brenda Moore
Adam Davis	Paula Moore
Elaine DeJovini*	Marge Mullins
Dana Delaware	Wynona Murphy*
Sarah Delaware	Sue Neely*
Becky Eggering*	Rusty Nelson
Glen Egley	David Nichols
John Erhart	Eva Jane Noe
Jerry Findling*	Sara Orel
Aaron Fine	Reuben Peterson
Scott Fleming	Barry Poyner
Jeanette Foreman*	Arnie Pruessner
Jesse Foreney*	James Przybylski
Jeff Gall	Janice Saffir
Marilyn Gibbons*	Rick Sayre
Neil Gilchrist	Werner Sublette
David Gillette	Heidi Templeton*
MariannaGiovannini*	Laura Thrasher*
Judy Gooch*	Julie Treasure
Bob Graber	Laurie Turner
Mark Hanley	Melissa Ware
Dan Heater	Vicky Wehner
Jay Hehir	Ann Weidner
Traci Hill*	Kevin White
Liz Hopkins*	