

# TRUMAN

A Weekly Publication of Truman State University

T O D A Y



Vol. 4, No. 57

June 13, 2000

## VOLUNTEERS NEEDED!

Truman faculty  
and staff  
are needed  
to work the gate  
July 27  
on behalf of  
Truman State  
University  
at the  
53rd Annual  
NEMO Fair.



Call Liz Bradley  
at 785.4016 to  
sign up.

Volunteers receive  
a Truman shirt  
& free day pass  
to the fair for July 27.

## Heartland Chautauqua to Perform at Kirksville's NEMO Fairgrounds July 3-8

The Heartland Chautauqua will bring a slice of history to Kirksville's NEMO Fairgrounds July 3-8. Five scholars will appear in full costume each evening and present historical characterizations of Civil War Americans. Each program is free to the public and will begin at 7 p.m. with 15 minutes of local entertainment.

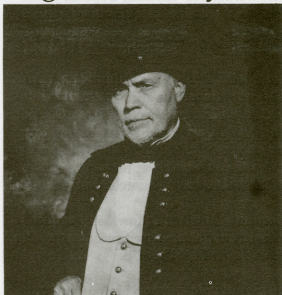
Historical characterization is a format reminiscent of Hal Holbrook's Mark Twain or Steve Allen's television show, "Meeting of the Minds." Unlike scripted actors, the scholars speak spontaneously in the first-person and exchange ideas with audience members because of their knowledge of the character's history.

Personalities to be portrayed include General William Tecumseh Sherman on July 4, Harriet Beecher Stowe on July 5, Angus Augustus Burleigh on July 6, Mary Boykin Chesnut on July 7 and Sojourner Truth on July 8. Musical entertainment and other festivities will accompany the skits underneath the giant tent.

The Kirksville community will celebrate the arrival of the Heartland Chautauqua by meeting at the NEMO Fairgrounds on July 3 to share the task of raising the Chautauqua circus tent, a community activity that recalls a tradition established more than 100 years ago.

The Chautauqua is an event with a deep history in the heartland. From the mid-nineteenth century until the 1930s, the Chautauqua offered a place for Missouri residents to engage in intellectual activity.

The traveling tent shows featured famous politicians and orators, and brought entertainment and education to many small Midwestern towns. Famous personalities such as Teddy Roosevelt and William Jennings Bryan contributed to oratory, musical and dramatic performances



Chautauqua performer A. Theodore Kachel will portray General Sherman, who fought in the battles of Bull Run, Shiloh and Chattanooga. He eventually was named supreme commander of the Union armies in the West, that kept audiences returning each summer. The Chautauqua ended its run in the 1930s when it began to lose educational value and could no longer compete with movies and radio.

In the late 1970s, however, the humanities' councils in the Midwest recognized the value of the Chautauqua and began a revival of its legacy. The Missouri Humanities Council launched *Missouri Chautauqua* in 1993, and when the citizens of Missouri responded enthusiastically, the Council decided to establish the Chautauqua once again as a permanent traveling program. In 1996 the Illinois Humanities Council joined Missouri's efforts to create the *Heartland Chautauqua*.

For more information about the Heartland Chautauqua program, or to contribute a monetary donation, contact chairpersons Bob Behnen (626.2180) or Alanna Preussner (785.4489) or the Kirksville Chamber of Commerce at 665.3766.

# Notables

**Major Arthur Anthony**, assistant professor of military science, was the guest speaker at the Memorial Day ceremony hosted by Adair County veterans at Rieger Army in Kirksville. Anthony has been at Truman since February 1998.

**Jim Barnes**, writer-in-residence, had a poem entitled "Heading East Out of Rock Springs" accepted for publication in *Quarterly West*, a literary magazine published in Salt Lake City. In addition, a Los Angeles magazine, *Rattle*, is featuring "Remembering Cap Canaille," a spatial poem written by him in its next issue.

# Notes

**Area host families are still needed for 53 Taiwanese students and faculty** who will be visiting Truman as part of an exchange program this summer. Hosts are needed from June 30 until July 2 and will be asked to attend a special reception. For more information, or to volunteer, call 785.4076.

**Campus Christian Fellowship will host a Red Cross Blood Drive** from 11 a.m. until 4 p.m. June 14 at the SUB.

**Jill Mullin, sophomore biology/pre-med major, who was seriously injured in a February auto accident** is now responding positively when friends and family visit her and appreciates any correspondence. Her address is Mid-America Rehab. Hospital, c/o Jill Mullin, 5701 110th Str., Overland Park, Kan. 66211.

**Pickler Memorial Library hours during the summer sessions** are 7:30 a.m. until 10 p.m., Monday through Thursday; 7:30 a.m. until 5 p.m. on Friday; 1-5 p.m. on Saturday; and 5-10 p.m. on Sunday.

**PRIMO Biology Academy will be having a car wash at the Hy-Vee parking lot** from 1:30-3:30 p.m. June 25. Donations will be given to the Back-to-School Program sponsored by the Northeast Missouri Community Action Agency. The PRIMO (Primary Care Resource Initiative for Missouri) Academy is for high school age students who are interested in pursuing a career in

**Marc Becker**, assistant professor of history, recently had his article "Una Revolución Comunista Indígena: Movimientos de Protesta Rurales en Cayambe, Ecuador," published in the Instituto de Historia y Antropología Andiana's *Memoria*, no. 7.

**Jason Reinberg**, Spring 2000 Truman graduate, was recently honored with the **Ken B. Jones Award** which recognizes the top student-athlete of the year in the Mid-American Intercollegiate Athletics Association. Reinberg, who graduated with a perfect 4.0 GPA, was a basketball player and biology/pre-med major from Wash-

the medical profession. It is sponsored by Truman State University and the Northeast Missouri Area Health Education Center (AHEC).

**Two different programs are being offered by the Staff Development Committee during June.** Dr. Dean VanGalen will present a talk on "Liberal Arts Education in an International Setting: Environmental Science in Norway," at 3 p.m., June 23, in the Alumni Room, SUB. Please RSVP to Dorian at 785.4031 by June 16. "Financial Fitness for Life" will be presented at two sessions (from 11 a.m. until 12:30 p.m. and from 2-3:30 p.m.), June 27, in the Governors Room, SUB. For this program, RSVP to Dorian at 785.4031 by June 20.

**Supervisory personnel are invited to attend a forum on the Family and Medical Leave Act (FMLA)** to be held at 2 p.m. on June 28 in the Alumni Room, SUB. Included in the presentation will be an overview of what FMLA is and how it applies to Truman. Please RSVP to Maureen Slaughter at 785.4031.

**The Writing Center is open this summer to help all Truman writers** at any stage in the writing process. The summer hours are as follows: 9 a.m. until 3 p.m., Monday; 9 a.m. until 5 p.m., Tuesday; 9 a.m. until 4 p.m., Wednesday; 9 a.m. until 4 p.m., Thursday; and 9 a.m. until 1 p.m., Friday. Visit McClain 303 or call 785.4484 for info.

F.Y.I.—  
**AROUND 300  
C.A.M.P. CYCLISTS  
WILL BE  
RIDING BY  
TRUMAN'S  
REC CENTER**

**AFTER NOON  
JUNE 21**

**SOME MAY STOP  
FOR A WATER  
& REST BREAK.**



This is the twelfth year for the C.A.M.P. (Cycling Around Missouri Parks) program, sponsored by the Missouri Department of Natural Resources, Hosting International & Ozark Area Youth Hostel.

Approximately 300 cyclists are involved this year in the seven-day, 70-mile-per-day event that originates and culminates at Finger Lakes State Park near Columbia.

On June 21 the cyclists leave Pershing State Park in LaCledde, Mo. and stop at Truman on their way to 1000 Hills State Park west of Kirksville, where they will spend the evening.

*Truman Today* is published weekly on Tuesdays; semimonthly during the summer months. Deadline for entries is 3 p.m., the Thursday preceding Tuesday's publication. Entries should be submitted by e-mailing lgordon@truman.edu or by completing the *Truman Today* forms available in the Public Relations Office, McClain Hall 102. The *Truman Today* may be accessed online at [www2/truman.edu/](http://www2/truman.edu/)