

NORTHEAST

Today

Northeast Missouri State University

Vol. 3, No. 6

September 28, 1987

Otten Discovers Farmers' Common Ground

Farming, like almost everything else, has seen many changes throughout time. Farmers have moved from the days of hand tools and hours of back-breaking labor to a new era of expensive machinery and scientific methods. But in spite of these developments, some things have not changed. Farmers throughout the ages share certain characteristics.

Elizabeth Otten, assistant professor of English, found six prominent characteristics of small farmer rhetoric during eight weeks of research conducted at Ohio State University, Columbus, this summer.

Otten participated in the Na-

tional Endowment for the Humanities Summer Seminar for Teachers, June 22 through August 14.

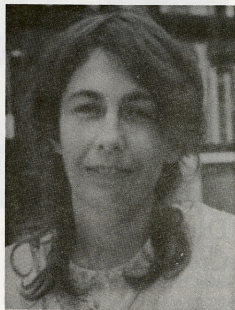
Otten received a \$3,500 stipend for the eight week seminar and was selected from a group of 46 applicants.

"The seminar is designed for teachers who don't have the time or resources to devote to studying their fields," Otten said.

The NEH was established by Congress in 1965 to support research education and public projects in the humanities.

Otten said a prominent scholar leads each of the 300-400 NEH

cont. pg. 5



Members of Alpha Phi Alpha perform during the Activities Fair held Sept. 24. More than 50 campus organizations participated in the event, the theme of which was "Discover the Hidden Treasures."

SAINT LOUIS SYMPHONY ORCHESTRA

Leonard Slatkin,
Music Director and Conductor

LYCEUM SERIES

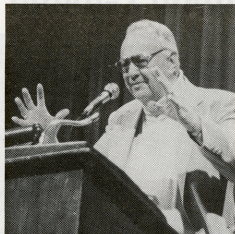
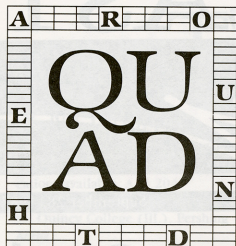
8 p.m.

Wednesday, October 7
Baldwin Auditorium

Free tickets will be available to students, faculty and staff Oct. 1, 5-7 p.m., in the Student Activities Board Office, SUB.

Financial assistance for this concert is provided by Union Electric Co. and the Missouri Arts Council, a state agency.





Dickey Draws Crowds' Attention

James Dickey tells another story during his presentation in Baldwin Auditorium, Sept. 18. Dickey entertained an audience of approximately 1,000 with several readings of his poetry and excerpts from his bestseller novel "Deliverance" and his new novel "Annilam."

Northeast Today Staff

Editor-in-Chief
Michelle Yost

Associate Editor
Barbara J. Dietrich

Contributing Writer
Callen Fairchild

Photography
Tom Richardson

Production
Cindy Farmer

Faculty Recital Tonight

Janice Saffir, pianist, and Karen Becker, cellist, will present a faculty recital at 8 p.m., tonight, in Baldwin Auditorium. The duo will perform "Sonata in G Major" by J.S. Bach, "Sonata in G Minor, Opus 5, No. 2" by Beethoven and "Sonata, Opus 40" by Shostakovich. The recital is free and open to the public.



Interviews on Campus

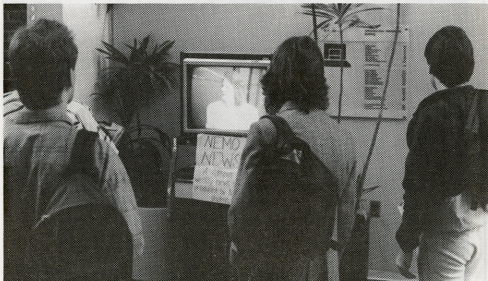
The following companies will be interviewing on campus this week. For more information, contact the Career Planning and Placement Center, McKinney Center.

WEDNESDAY Purdue University (MBA program)

THURSDAY Arthur Young & Co.
Radio Shack

FRIDAY Radio Shack
Touche Ross & Co.

Student News Keeps Campus Informed



If you've noticed a television monitor set up in the A/H lobby or in the SUB Snack Bar on Fridays, stop and take a look. You won't find any re-runs on this channel—it is NEMO NEWS, the 30-minute weekly campus news program produced by the nine members of the advanced television broadcasting class taught by Lori Dunseith.

Student Senate Awareness Week

Monday, Sept. 28

A Night at the Oz
8 p.m.-midnight
Admission: \$1

Tuesday, Sept. 29

"Outlook Forum"

Sponsored by Ryle Hall
and Student Senate

Topic: The AIDS Controversy:
"Condoms on Campus"

7-8 p.m., Ryle Hall main lounge

Wednesday, Sept. 30

"Can We Talk" Day on the Mall
An opportunity to tell senators
what you want Senate to achieve
this year

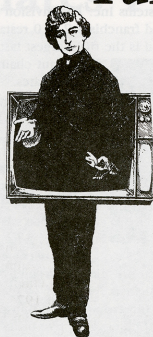
Thursday, Oct. 1

Pizza With the Presidents
Sign up in the Senate Office, SUB
The first 100 signatures and Vali-
dine numbers dine with
Pres. McClain and Senate
Pres. Denise Rendina
6:30-8:30 p.m., Spanish Room,
SUB

Friday, Oct. 2

Pepsi Wagon in the Circle Drive
8:30 a.m.-3:30 p.m.
Donuts and orange juice
8:30-10 a.m.
Hot dogs and sodas
10 a.m.-3:30 p.m.

University Players Presents "Tartuffe"



"Tartuffe," the comedy by Moliere, will be performed by the University Players Tuesday through Saturday. Performances will be held nightly at 8 p.m. in the Little Theatre, Baldwin Hall.

This production of "Tartuffe" will use the prize winning translation by American poet Richard Wilbur and will be produced with modern scenery and costumes.

Admission is free to all students and faculty with NMSU ID cards. There is a 50 cents reservation fee charged for advance reserved seat tickets which may be obtained at the Student Activities Board Office, SUB.

Seminar Hosts Nobel Laureate

Dr. Jerome Karle and his wife Dr. Isabella Karle presented lectures on "The Path to the Direct Method of Crystal Structure Determination" and "Application of Crystallography to Chemistry," respectively, Sept. 22 in the SUB Activities Room.

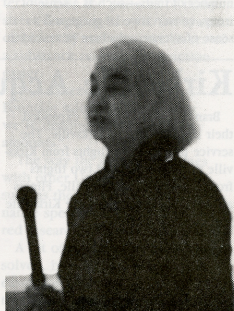
The Karles' lectures were part of the Science Seminar Series sponsored by the Division of Science.

Both scientists are from the Naval Research Lab in Washington, D.C. Dr. Jerome Karle was a 1985 Nobel Laureate.

The next presentation in the Science Seminar Series will be Dr. Norman E. Borlaug from Texas A&M University on Oct. 13.



Dr. Jerome Karle



Dr. Isabella Karle

Fast-Food Leader Delivers "Notes Toward a Definition of Success"

One of the country's top leaders in the fast-food restaurant business, Jack Laughery, will speak at Northeast Missouri State University, as part of Northeast's "Issues in Business" forum. Laughery, chairman, chief executive officer and president of Imasco, USA, will present a speech titled "Notes Toward a Definition of Success," at 7 p.m., Wednesday, in Baldwin Auditorium. The program is sponsored by the Division of Business and Accountancy, and it is free and open to the public.

The Restaurant Division of Imasco, USA, includes Hardee's

Food Systems Inc., and Burger Chef Systems Inc. The division operates and franchises 2,610 restaurants and is the fifth largest fast-service restaurant chain in the United States.



Jack Laughery

Laughery began working in the restaurant business more than 25 years ago when he joined Sandy's restaurant. In 1972, he negotiated the merger between Sandy's and Hardee's Food Systems Inc. With the merger, he became executive vice president and chief operating officer in 1973. In 1975, the board of directors elected him president and chief executive officer.

In 1980, Laughery was elected chairman of the board of Hardee's. When Hardee's was acquired by Imasco Limited of Canada in 1981, he was elected to the board of Imasco, while continuing to serve his positions with Hardee's.

Laughery has been active in numerous efforts and organizations. Most recently, North Carolina Gov. James Martin selected Laughery to serve on the North Carolina Business Council of Management and Development.

Laughery, a native of Guthrie Center, Iowa, received a bachelor's degree in commercial science from the University of Iowa in 1957. He is married to the former Helen Herboth of Kirksville, Mo.

Otten (cont.)

summer seminars held around the country every year.

"Edward P.J. Corbett led the seminar on Rhetoric and Public Discourse. He is excellent in this area," Otten said.

Each of the 12 seminar participants also researched an individual project.

"I wrote my paper on agrarian rhetoric," Otten said, "The idea grew from teaching the Farm and Town section of junior composition."

During her study, Otten identified a number of traits—such as a sense of irony, conservative language and a sense of silence—that can be traced in

small farmer rhetoric through the ages.

She also found a number of trends in farming that have occurred repeatedly throughout history.

"Small farms have historically been threatened by larger operations," Otten said.

The experience also helped Otten better relate to her students from rural backgrounds.

"I'm a lot more knowledgeable about farming. Now when a student writes about no-till corn, I'll better understand what he's talking about," she said.

Otten believes interacting with her colleagues impacted her work.

"It was good to be able to devote

myself full-time to studying and to talking about my work with interested people. They gave me insights I might not have picked up on my own," she said.

Otten said the other individual projects included a study of feminine discourse and a study about the way Martin Luther King related to various levels of audiences at the same time, as well as many others.

Otten began teaching at the University in 1984. She holds a doctorate in the field of English Renaissance and has previously taught at Indiana-Purdue and Plymouth State College, New Hampshire.

Kirksville Acquires New Flight Service

Braniff Express recently expanded their flight service to Kirksville. The service provides two flights from Kirksville to Kansas City and two flights from Kansas City to Kirksville. Flights arrive at and depart from the Kirksville Municipal Airport.

KIRKSVILLE TO KANSAS CITY

Departure	Arrival	Operates
6:20 a.m.	7 a.m.	Mon. - Sat.
1:05 p.m.	1:45 p.m.	Sun. - Fri.

KANSAS CITY TO KIRKSVILLE

Departure	Arrival	Operates
12:15 p.m.	12:55 p.m.	Sun. - Fri.
6:50 p.m.	7:30 p.m.	Sun. - Fri.

Known for low airfare, Braniff is currently running special introductory rates on these flights. One-way flights cost \$19 and round-trip flights cost \$39.

For reservations or more information, contact one of the local travel agencies of the Braniff Express Office in Kirksville at 665-8450.

Braniff and the Braniff Express provide connections to 33 cities in the United States and Mexico. Other cities recently acquiring the new service are St. Louis and Columbia, Mo.

NMSU's Research Facility 'Top-Notch' Orscheln Donates Final Piece



Ken Fountain, associate professor of science introduces the gas chromatograph-mass spectrum system to Don Orscheln, president of Orscheln Brake and Lever Co., Bob Heimann, manager of Orscheln Research and Development, and Jack Magruder, Head of the Division of Science. Orscheln Brake and Lever Co. recently donated the instrument to the University.

Puzzles can fascinate or frustrate. For students and faculty in the Division of Science, a \$55,000 gift has turned frustration into fascination.

Orscheln Brake and Lever Co. purchased a gas chromatograph-mass spectrum system for the University. The system adds the final piece that makes the University a first-rate research and identification facility in the field, Ken Fountain, associate professor of science, said.

"I've been consulting and doing research for them for about five years," Fountain said. "It's sort of a thank-you note for research that put them in a remarkable marketing position for brake cables."

"They responded with a responsive support of higher education," he said.

"I feel that this instrument will enhance the ability of the laboratory in ways not possible before. I'm glad to be a part of that," Don Orscheln, president of Orscheln Brake and Lever Co. said. "The

marriage between industry and education is drawn closer by this."

The gas chromatograph-mass spectrum system separates and identifies complex organic mixtures—the major problem in organic chemistry.

What's remarkable about the gift, Fountain said, is Orscheln, in cooperative research with the University, will probably never use this particular piece of equipment. It is not related to any research they need.

"It is a totally disinterested gift," he said.

During an accreditation visit, the American Chemical Society Committee on Professional Training recommended the system as the final piece of equipment necessary for a top-notch research facility. Now the University is the envy of many research organizations, Fountain said.

"They're just dying to have this, and we've got it."

Students and faculty will benefit from faster problem solving. The

system separates and identifies mixtures in a fraction of the time that was required before. This means more problems can be solved more quickly.

"Solved problems mean publications," Fountain said.

Undergraduates gain an additional benefit. Typically used in graduate research, the system is often unavailable to undergraduates. NMSU students will have a head start on others who do not have practical, hands-on experience.

"It's exceedingly scientific," Fountain said. "We know what we're dealing with even in tiny amounts."

The sensitivity of the equipment and its time-saving value can be especially valuable to criminalists. The new system uses molecular weights and fragmentation patterns to identify even nanograms of matter. Because the patterns of many street drugs are known, the system can identify and compare traces of a substance making a conviction easier.

"It's exceedingly scientific," Fountain said. "We know what we're dealing with even in tiny amounts."

The way the system combines with other University equipment, such as the nuclear magnetic resonance spectrometer and the infrared research efforts, Fountain said.

A lot of puzzles still need to be solved, but this gift is making it easier for students and faculty in the Division of Science to put the pieces together.

Lyceum Presents Leading Orchestra

The nation's second oldest orchestra, the Saint Louis Symphony Orchestra will make its twenty-third appearance at Northeast, Oct. 7-8, as a Lyceum Series presentation.

The Orchestra, under the direction of Leonard Slatkin, will perform at 8 p.m., Wednesday, Oct. 7, in Baldwin Auditorium and sessions of the Young People's Concert, under the direction of Kirk Muspratt, will be held at 10 and 11:30 a.m., Thursday, Oct. 8, in Baldwin Auditorium also.

The youth concerts are made possible by public-private partnership between the Southwestern Bell Foundation and the National Endowment for the Arts. Additional assistance is provided by the Missouri Arts Council. Regional coordination of the tour is provided by Mid-America Arts Alliance.

The Young People's Concert will include works "From Bach to Britten, 1750-1950." The program consists of "Air on the G String" from Suite No. 3 in D major by

Bach, "Water Music" No. 11 by Handel, "Symphony No. 39" in D-flat major, K. 543 by Mozart, "Symphony No. 5" in C minor, Opus 67 by Beethoven, "Pictures at an Exhibition" by Mussorgsky/Orch. Ravel, and "The Young Person's Guide to the Orchestra" Opus 34 by Britten.

The Orchestra will also participate in the American Symphony Orchestra League's OLIS (Orchestra Library Information Service) New Music Project Reading Sessions from 2:30-4:30 p.m., on both days. During these sessions, the Orchestra will read the works of four emerging American composers: Oct. 7, "Fresh Ayre" by Daron Hagen and "Mystic Promenade" by Lawrence Rapchak and Oct. 8, "Metastasis" by Kenneth Steen and "Pavane and Ricericare" by Thomas Allen LeVines.

The evening performance will feature the "Overture to Les Franc-Juges" Opus 3 by Berlioz, "Appalachian Spring: Complete Ballet" by Copland and excerpts from "Swan

Lake" by Tchaikovsky.

Slatkin, now in his ninth season as the Symphony's music director and conductor, has achieved acclaim as an opera conductor performing works at the Vienna State Opera, Opera Theatre of Saint Louis, Stuttgart Opera and the Lyric Opera of Chicago.

Noted for his diverse repertoire and wide-ranging, imaginative programming, Slatkin's recording of the Prokofiev Symphony No. 5 with the Saint Louis Symphony Orchestra received two 1985 Grammy Awards. The more recent RCA and Angel releases of the Shostakovich Symphony No. 5 and ballet music of Copland received a total of five Grammy Award nominations.

Free tickets for students, faculty and staff will be available Oct. 2 and 5-7, in the Student Activities Board Office, SUB.

Financial assistance for this concert is provided by Union Electric Co. and the Missouri Arts Council, a state agency.

Fall Senior Test Schedule

DATE	TIME	LOCATION	TEST
October 10	8 a.m.	TBA	Graduate Record Examination
November 9	2:45 p.m.	Barnett Hall	ACT/COMP Objective Test
November 11	2:45 p.m.	Barnett Hall	UAP: Business Senior Test
November 14	8:30 a.m.	TBA	National Teacher Examination
November 16	2:45 p.m.	Barnett Hall	Cooperative English Test
November 17	2:45 p.m.	Barnett Hall	Agriculture/Industrial Science
November 18	2:45 p.m.	Barnett Hall	Family Sciences Justice Systems Speech Pathology
November 19	8 a.m.	VH 140	AICPA (Accounting Senior Test)
December 1	2:30 p.m.	A/H 103	Foreign Language and Health
December 12	8 a.m.	TBA	Graduate Record Examination

(TBA-To be announced within two weeks of the examination date)

NORTHEAST NOTES

NMSU Intramural Department has undergraduate stipends to award to two students. Requirements include a minimum 3.0 GPA and three letters of reference. Officiating experience is preferred. For more information, contact the Intramural Office, Pershing Building 309, 785-4343.

Student Senate is accepting names of students that are interested in being involved in Senate, but do not necessarily want to become a senator. Students interested in becoming a Senate Associate should stop by the Student Senate Office, SUB, and sign up.

Intramural-Recreational Sports deadline for volleyball is Oct. 7. Sign up in Pershing Building 309.

The Kirksville Bike Club is sponsoring the Kirksville Invitational Bicycle Autumn Classic, Oct. 11. The route will be approximately 80 miles long over blacktop roads, from Kirksville to Mystic and back. Check-in will be at Gazebo Park at 7 a.m.; departure, 8 a.m. Entry fee is \$8. For more information, call Ed Tiff at 665-4062.

Grace Griffiths, from Tasmania, Australia, will visit NMSU on Oct. 6. Griffiths, a Fulbright scholarship recipient from the United States Department of Agriculture, is studying the different types of peer counseling groups. A reception will be held at 7 p.m., Career Planning & Placement Center, McKinney Center.

Young Life is interested in you if you have been to camp or worked as work crew, for a Young Life Reunion. For more information, contact Carolyn Tuttle at 665-1736.

Greek Development Conference will be held Oct. 10 in the SUB. Donuts and coffee will be served from 10:10-30 a.m., and the conference will last from 10:30 a.m.-2:30 p.m. Sidney Allen, national Panhellenic president, will present the keynote address. There will also be other speakers talking on topics pertinent to Greek life on the NMSU campus. At

3 p.m., there will be a philanthropy project, "Hands Across Campus" to raise funds for the United Way. Everyone on campus is welcome to participate. At 5 p.m., a reception will be held for all delegates attending the conference.

The Social Science Lecture Series will present Knut Walter, professor of history at Central American University, San Salvador, El Salvador, at 3:30 p.m., Oct. 6, in the SUB Alumni Room. Walter will speak on "Prospects for Peace in Central America."

Dick Semaan, winner of the Continuing Profession of Articulate Excellence Award of the National Speakers Association, will conduct a seminar titled "The Three Keys to Success," Oct. 2, from 8:30-11:30 a.m., at the Quincy Holiday Inn in Quincy, Ill. This seminar is sponsored by the Quincy Sales and Marketing Club with the cooperation of the Quincy Chamber of Commerce. Tickets are \$10 in advance and \$15 at the door. For more information, contact the Quincy Chamber of Commerce at (217) 222-7980.

Pershing facilities regular fall hours: natatorium open swimming, Monday, Wednesday, Thursday and Friday, 6:30-9:30 p.m., and Saturday, 10 a.m.-2 p.m.; weight room, Monday through Friday, 3:30-9:30 p.m., Saturday, 10 a.m.-6 p.m., and Sunday, noon-7 p.m.; and racketball courts, Monday/Wednesday/Friday, 7:30 p.m.-9:30 p.m., Tuesday/Thursday, 3:30-9:30 p.m. Reservations may be made by phone from 7:30-9:30 a.m. only. All facilities are closed during scheduled games and holidays.

Student Senate positions are open for two senior representatives and one graduate representative. Applicants must have a minimum 2.2 GPA, more than 90 credit hours for the senior representative position and be a graduate student for the graduate representative position. Today is the last day applications may be picked up in the Student Senate Office, SUB; application deadline is

5 p.m., Wednesday, in the Senate Office. Positions for one freshman representative and one councilwoman (any grade) are also open. Applications for these positions are available today and are due by 5 p.m., Oct. 7, in the Senate Office.

Sunday evening fellowship meals will be served every week at 5:30 p.m. for \$1.50 at the Lutheran Student House.

The Rhodes Scholarship provides for two to three years of graduate study at Oxford University. Outstanding students, who will graduate before October 1988, are eligible to apply this year. Information and applications will be available until Oct. 1, 1988, in the Social Science Division Office.

Faculty interested in learning more about Opportunities for Educators: The Fulbright Teacher Exchange Program should contact the Dean of Instruction. Application deadline is Oct. 15, 1987.

Who's Who qualifying forms are available in the Student Activities Office, A/H 204. Prerequisites include the following: leadership qualities displayed through participation in academic and co-curricular activities, a minimum 2.75 GPA and enough hours of credit earned to allow the student to graduate by the end of the 1988 summer session. Application deadline is Oct. 5.

Summer internships sponsored by the U.S. Department of State in its Washington, D.C. offices and abroad are available to juniors, seniors and graduate students. Further information and applications are available in the Social Science Division Office.

Individual yearbook pictures of students, faculty and staff will be taken free of charge today through Thursday, from 8 a.m.-5 p.m., SUB third floor.

This Week

28 MONDAY

- **Student Senate Awareness Week**
- **Homecoming King/Queen** applications available, A/H 204
- 7 p.m.—**Lady Bulldog volleyball** vs. Quincy College (Ill.), Pershing Arena
- 8 p.m.—**Faculty recital**, Baldwin Auditorium. Karen Becker, cellist, and Janice Saffir, pianist, will perform a duo of works by Bach, Beethoven and Shostakovich. The recital is free and open to the public. —**Philosophy and Religion Club** regular meeting, 112 W. McPherson, Apt. 4 (the Journal Building). Those who need a ride to the meeting place should meet at A/H Circle Drive at 7:45 p.m.

29 TUESDAY

- 3:30 p.m.—“**Architecture as a Career**,” a seminar presented by Joel Haag, 1984 NMSU graduate with a degree in industrial technology and 1986 graduate of Kansas University with a degree in architecture, Barnett Hall 137-138. Haag is a member of the Hollis & Miller Group, Architects and Engineers of Overland Park, Kan. All interested are welcome to attend.
- 3:30-4:30 p.m.—**Writing Center** workshop on “Editing, Punctuation and Mechanics,” A/H 303
- 3:30-4:30 p.m.—**Display Write Workshop**, Violette Hall 185. Interested students should sign up for the free workshop outside of VH 185. Also Thursday, 5:30-6:30 p.m. The workshops are sponsored by Delta Sigma Pi.
- 5 p.m.—**Alpha Phi Alpha** social service fraternity Aristocrat Club informational meeting, SUB 2
- 5:30 p.m.—**KIRAMAC-Kirksville American Marketing Association** open meeting for new members, Violette Hall 290
- 6 p.m.—**Alpha Sigma Gamma** service sorority Formal Rush,

- Alumni Room SUB. RSVP by calling Michelle Greer at 785-5997 or Tracy Leigh Mueller at 665-5306.
- 7 p.m.—**The AIDS Controversy: “Condoms on Campus”**, an outlook forum sponsored by Ryle Hall and Student Senate, Ryle Hall main lounge.
- 8 p.m.—“**Tartuffe**,” presented by the University Players, Little Theatre, Baldwin Hall; through Saturday.

30 WEDNESDAY

- **Intramural-Recreational Sports** deadline for racketball singles. Sign up at Pershing Building 309.
- “**Can We Talk**” Day sponsored by Student Senate, SUB mall.
- 3:30 p.m.—**Homecoming meeting**, SUB 6. All interested are welcome to attend. —**Logan Jordan**, assistant dean at Krannert School of Management, Purdue University, will present a program titled “Why an MBA?” in Violette Hall 120. The program is sponsored by Delta Sigma Pi professional business fraternity. All interested are welcome to attend. Jordan will also be available to meet with students to discuss the advantages of pursuing a graduate management degree at Purdue from 9 a.m.-3 p.m. in the Career Planning and Placement Center. Interested students should schedule appointments with Meredith Willcox at CPPC.
- 6 p.m.—**German Club** open meeting and Echo photo, 3rd floor SUB. German rock videos and door prizes afterward, A/H 304. Everyone is invited. —**Student National Education Association** open meeting, Violette Hall 140. All education majors are welcome.
- 7 p.m.—“**Issues in Business**” forum presents Jack Laughery, chairman, chief executive officer and president of Imasco, USA, Baldwin Auditorium. Laughery will speak on “Notes Toward a Defini-

tion of Success.” The lecture is free and open to the public.

- 7-10 p.m.—**Kirksville Crisis Line** training sessions for new volunteers, SUB Conference Room; also Thursday. The sessions are open to anyone interested in becoming a Crisis Line volunteer.
- 8 p.m.—**Campus Safety Task Force** open meeting to schedule year's activities, Ryle Hall Conference Room

1 THURSDAY

- 5 p.m.—**Association for Childhood Education International** general meeting, SUB 4. All interested are welcome.
- 6:30-8:30 p.m.—**Pizza with the Presidents**, SUB Spanish Room. The first 100 students to sign name and Vali-dine number in the Student Senate Office dine with Presidents McClain and Rendina.

2 FRIDAY

- **Last day to drop** full semester courses without code
- 8:30 a.m.-3:30 p.m.—**Pepsi Wagon** in A/H Circle Drive, sponsored by Student Senate
- 7 and 9:15 p.m.—“The Color of Money,” **SAB movie**. Admission is \$1.50 or free with an SAB sticker.
- 9 p.m.-1 a.m.—**Dance**, sponsored by Alpha Phi Alpha social fraternity, to benefit the United Way, Kirk Memorial. Admission is \$1 or free with a canned good.

3 SATURDAY

- 1:30 p.m.—**Bulldog football** vs. Butler University (Ind.), Stokes Stadium