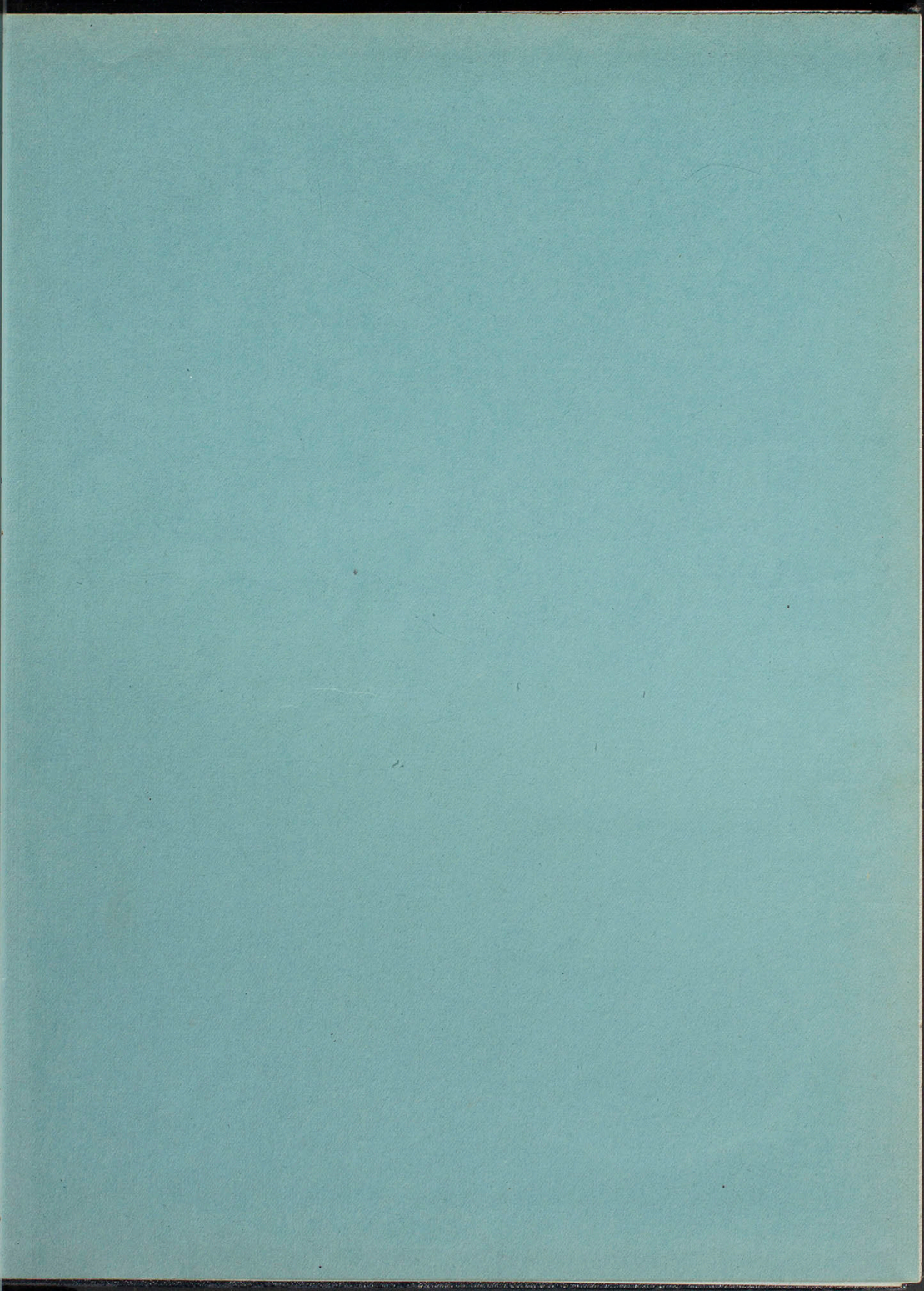




*The*  
**ECHO**

*Published by the*  
*Students of the*  
NORTHEAST  
MISSOURI  
STATE  
TEACHERS  
COLLEGE  
*Kirksville*

NORTHEAST MISSOURI  
ARCHIVES  
*copy 1*  
STATE UNIVERSITY







# THE ECHO

PUBLISHED BY THE STUDENT  
BODY OF MISSOURI STATE  
TEACHERS COLLEGE KIRKSVILLE

1 9 3 0

*John Ben Jones*  
*Editor*

*Mary Beauchamp*  
*Business Manager*

*Engravings*  
*Burger-Baird Engraving Co.*  
*Kansas City*

*Photographs*  
*Alexander Studio*  
*Kirksville*

*Printing*  
*Journal Printing Company*  
*Kirksville*



# FOREWORD

IN BEHALF OF THE STUDENT BODY THE ECHO STAFF PRESENTS THIS BOOK WITH A SINCERE HOPE THAT AS YOU TURN THROUGH THESE CHRONICLED AND PICTURED PAGES MAY THEY EVER REMAIN A NEXUS BETWEEN YOU AND YOUR ALMA MATER THROUGH ALL TIMES AND VICISSITUDES.

*The*  
**DEDICATION**

THIS BOOK IS AFFECT-  
IONATELY DEDICATED  
TO MISS T. JENNIE GREEN  
IN APPRECIATION OF HER  
MORE THAN A QUARTER  
OF A CENTURY OF UN-  
SWERVING FIDELITY,  
LOFTY IDEALISM, UNSELFISH  
AND INDEFATIGABLE  
EFFORTS IN BEHALF  
OF THIS SCHOOL, ITS  
STUDENTS, THE BETTER-  
MENT OF THE COMM-  
UNITY AND EDUCATION  
IN GENERAL.



T. JENNIE GREEN ~



# C O N T E N T S

BOOK ONE  
ADMINISTRATION  
BOOK TWO  
CLASSES  
BOOK THREE  
ACTIVITIES

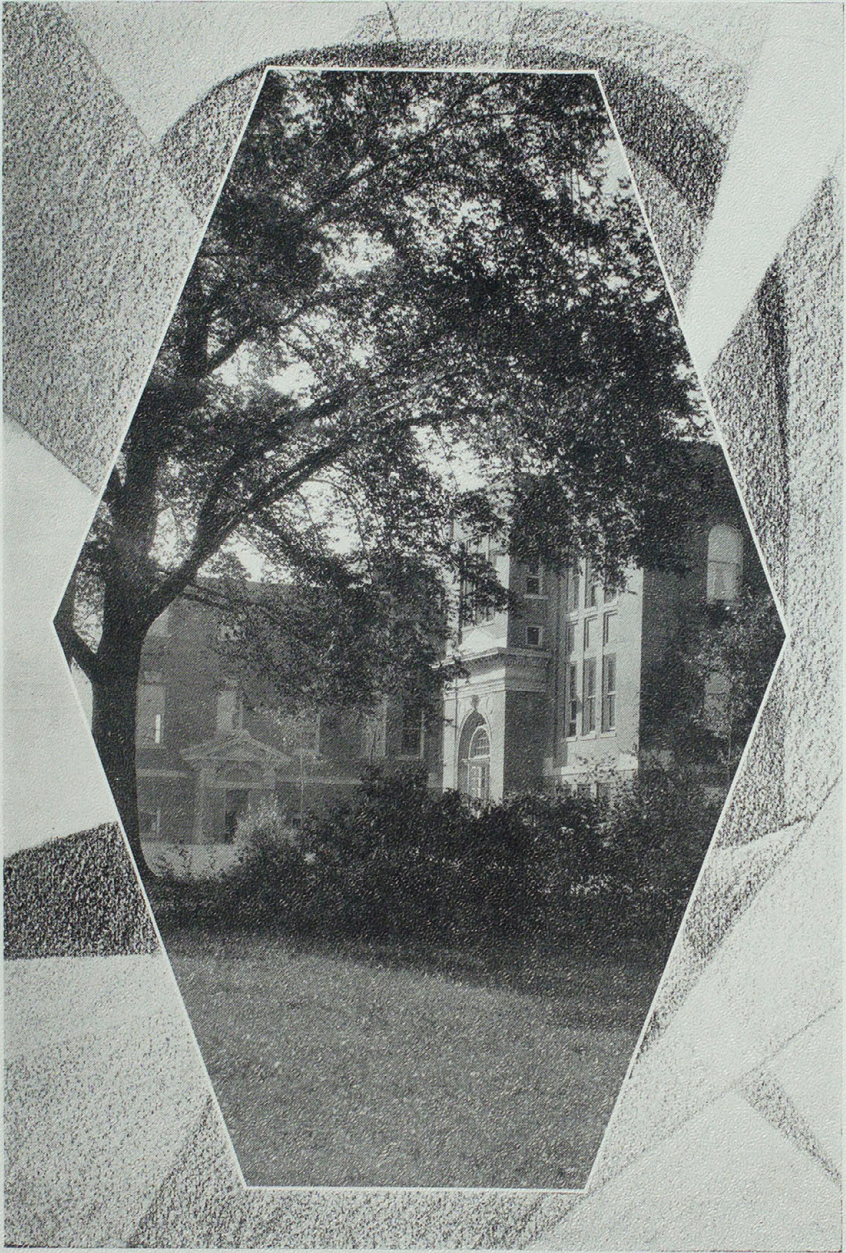
BOOK FOUR  
ORGANIZATIONS  
BOOK FIVE  
ATHLETICS  
BOOK SIX  
FEATURES

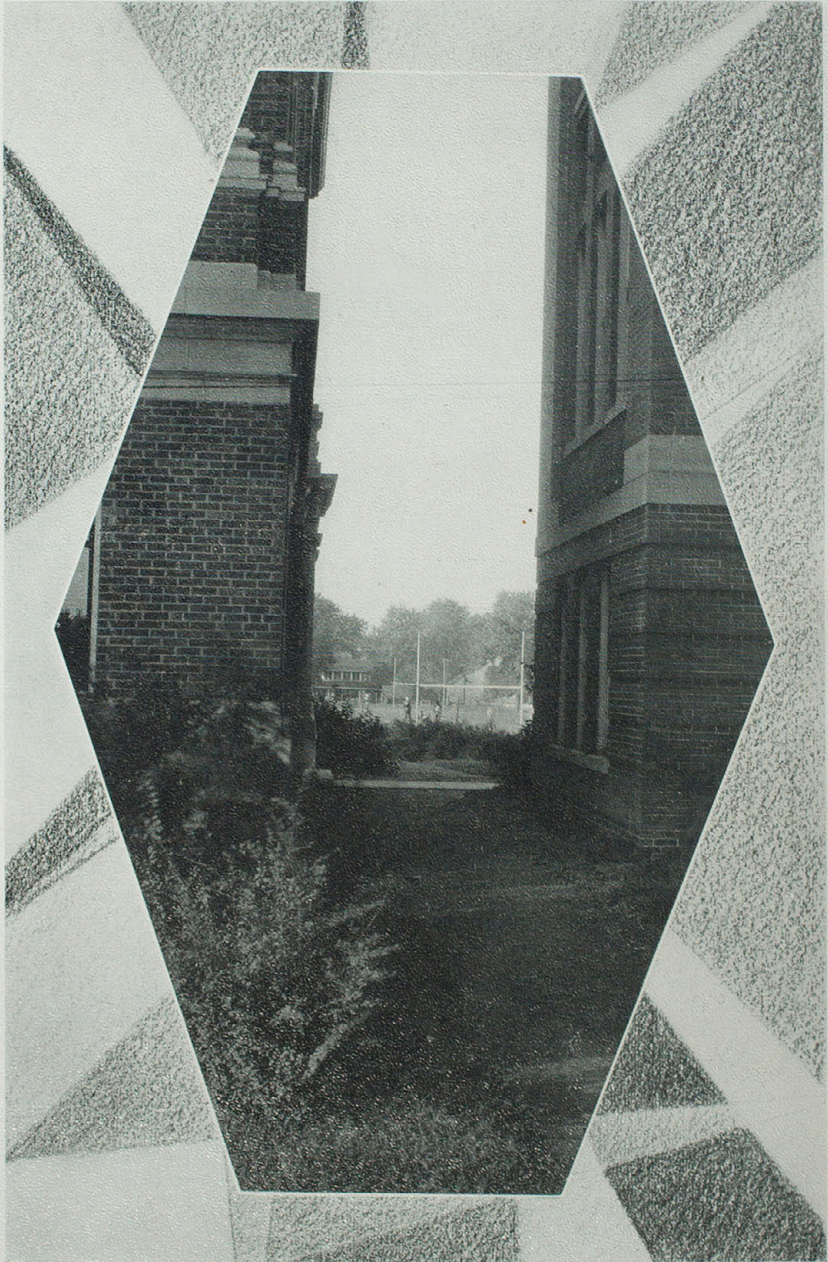
1930  
ECHO

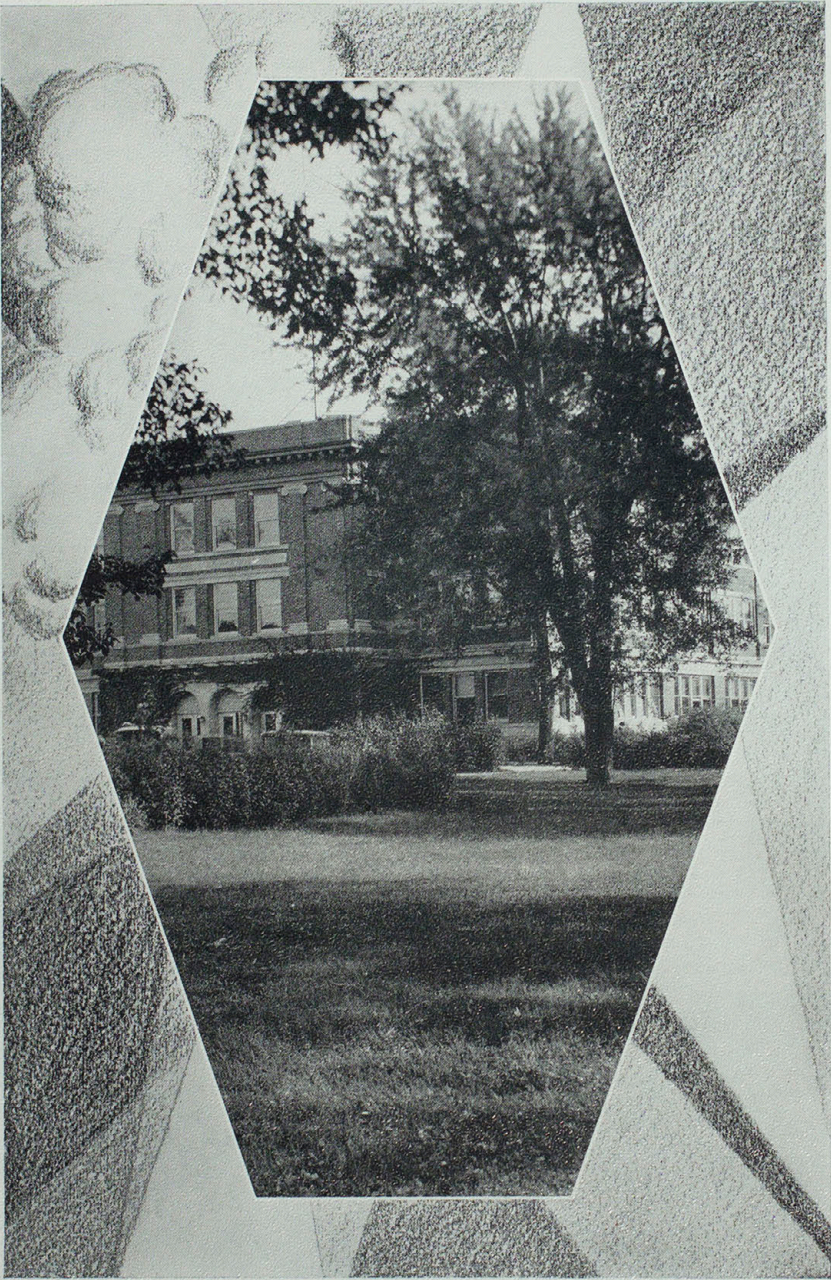
Pictures you will  
long remember—

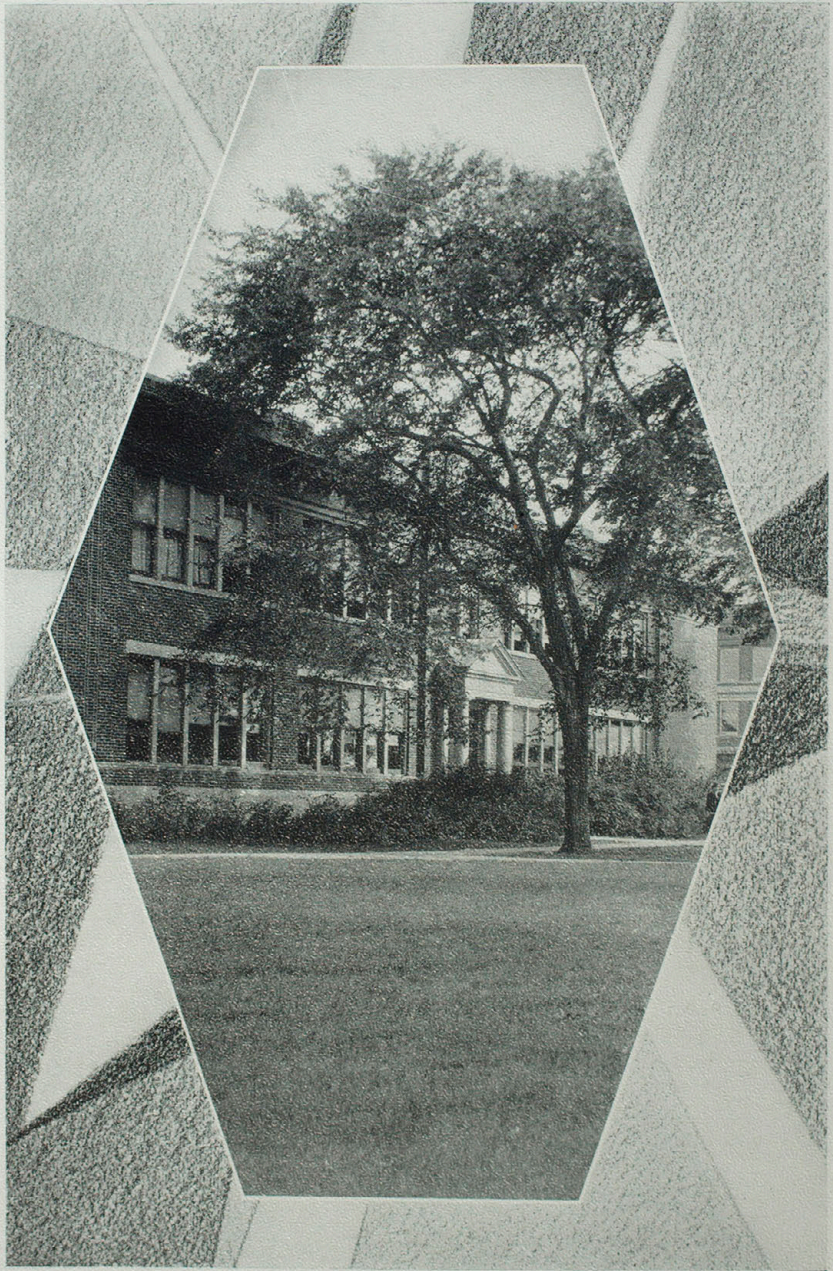


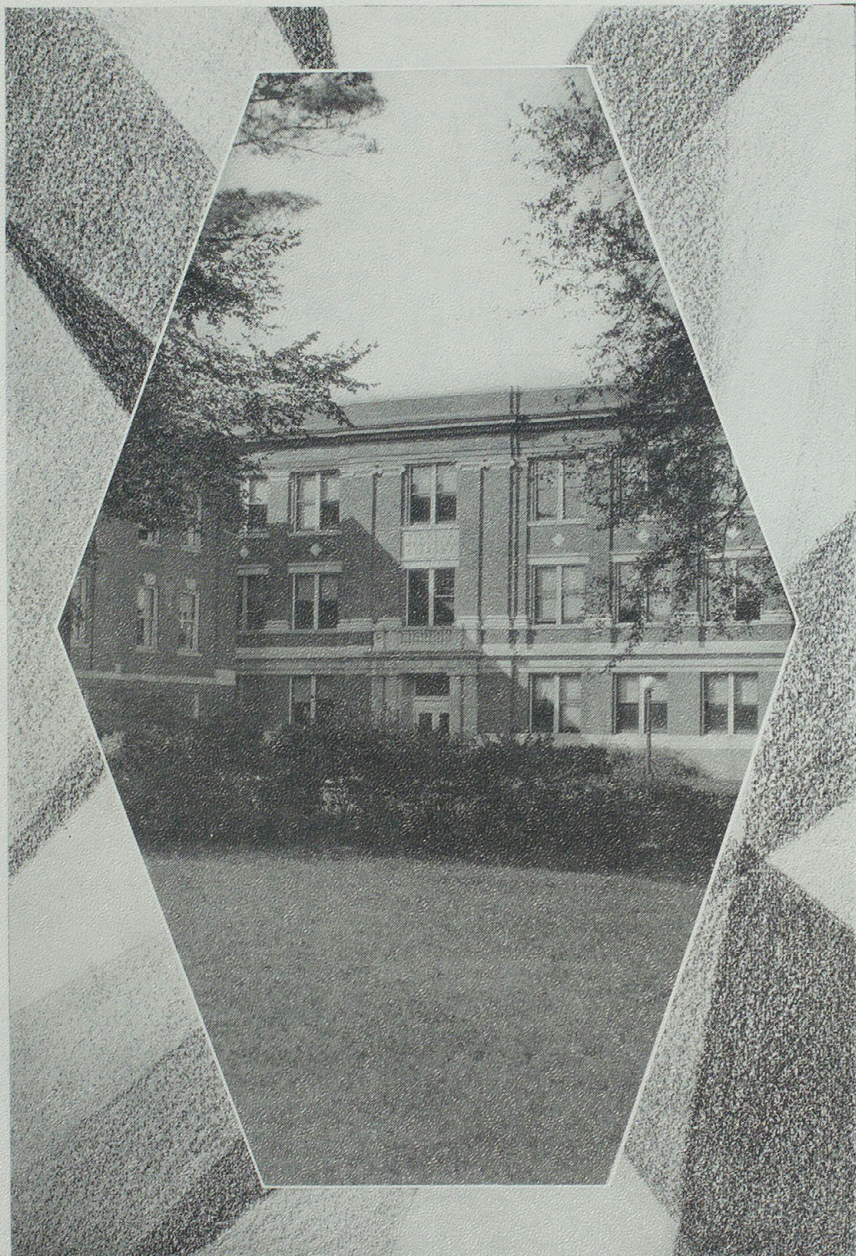


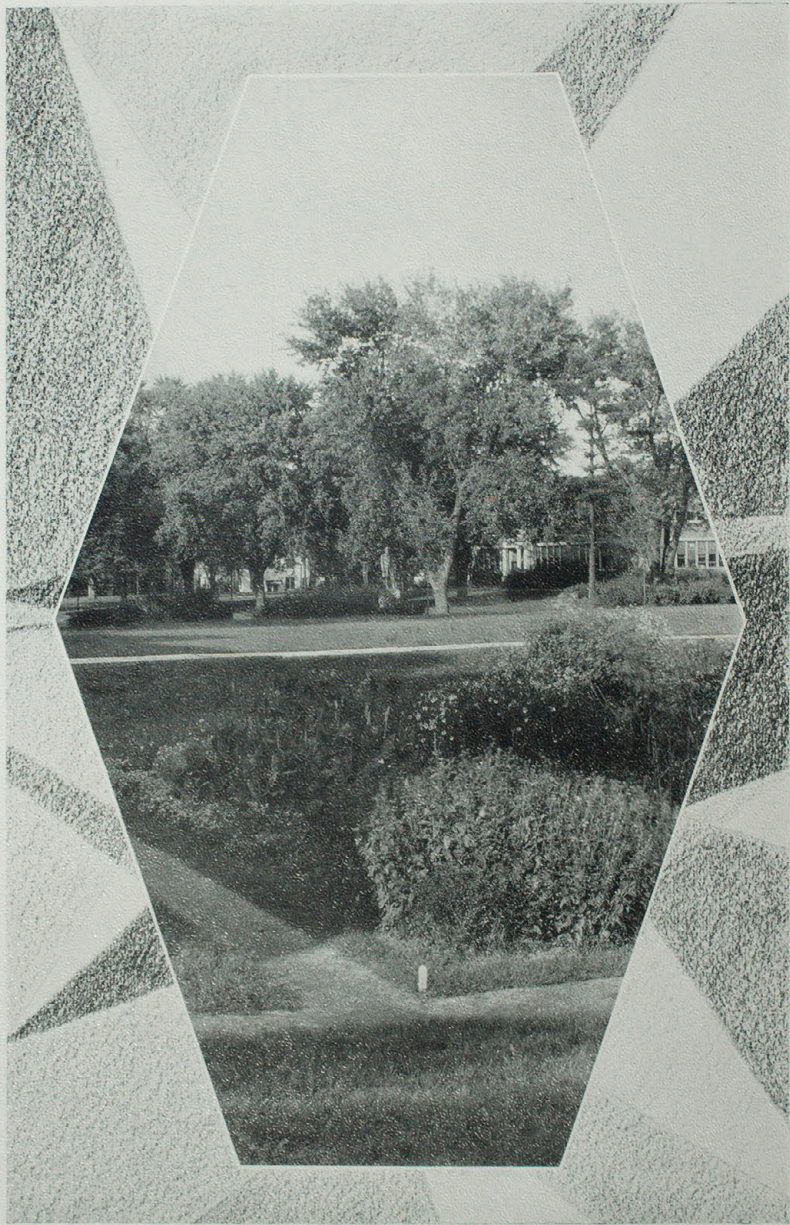


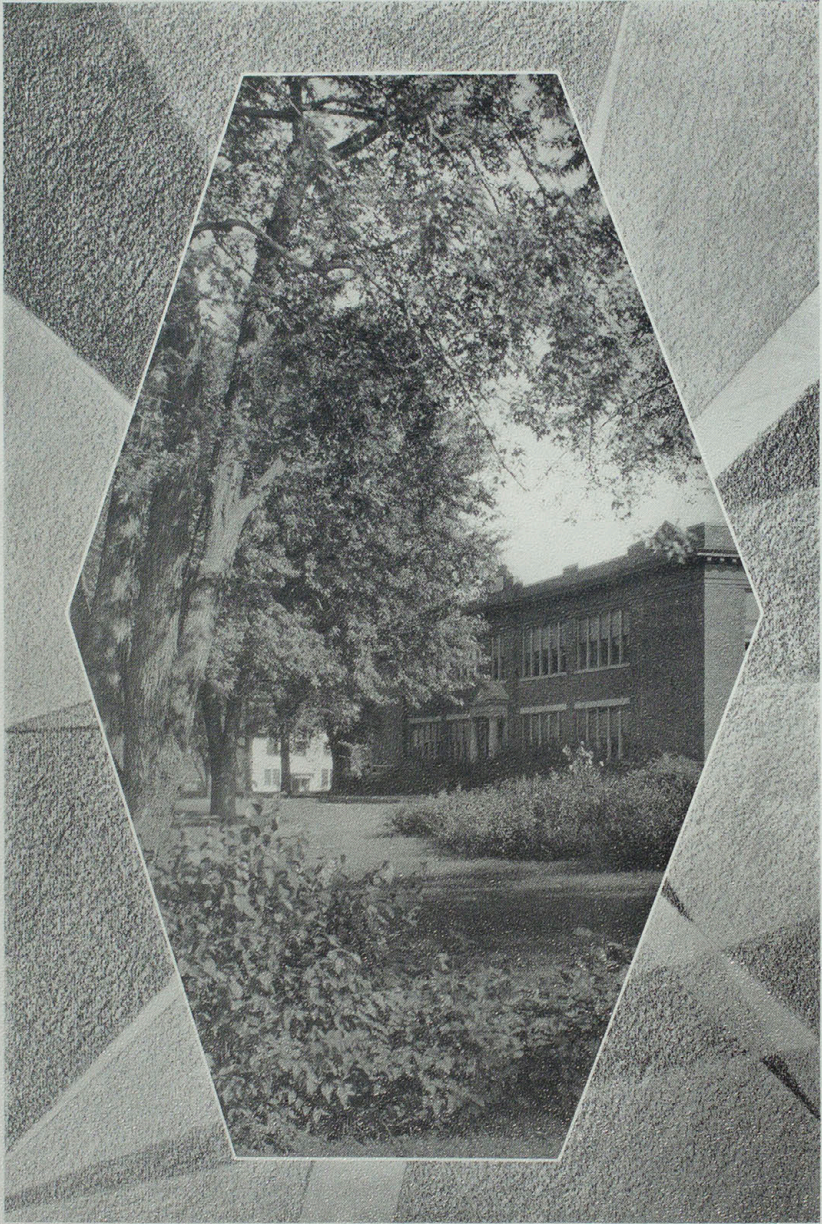
















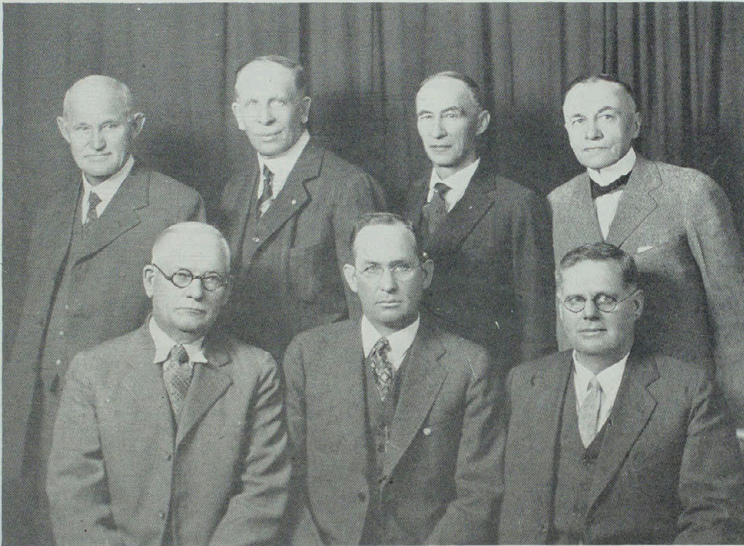
# BOOK ONE

## ADMINISTRATION

The education of primitive peoples was not of books or schools, but came through actual life participation. Its aim was the perpetuation of the group. The long story of education is that of the gradual emergence of the individual as having significance in his own life and right, and—



## Board of Regents



J. E. WEATHERLY  
Hannibal

C. J. BAXTER  
Kirksville

J. A. COOLEY  
Kirksville

C. W. GREEN  
Brookfield

W. L. SHOUSE  
Shelbina

CHARLES A. LEE  
Jefferson City

ALLEN ROLSTON  
Queen City

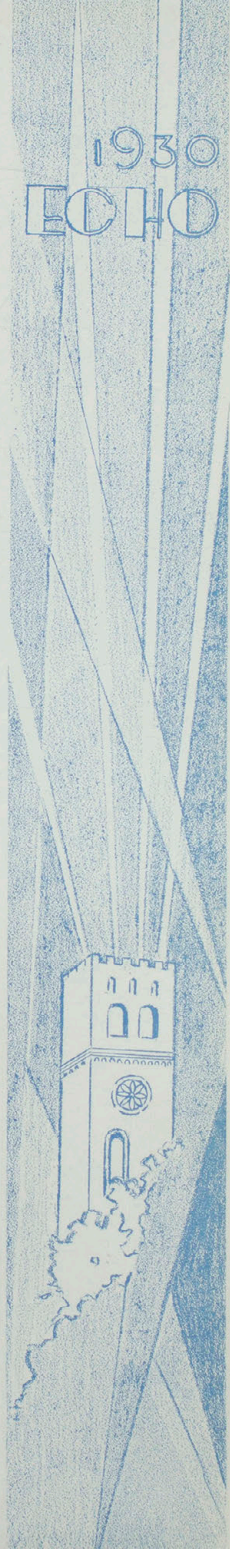
## These College Years

These College Years, they pass away,  
Some days with measured tread and slow,  
Others like gleams of light  
Now nestled in mountain tops of memory,  
Forever sacred as high resolves and beauty beyond compare.  
To Seniors soon a clasp of hand, Godspeed in fields anew,  
To Juniors another year to reap the ripened grain of college years,  
To Sophomores, fields charted and ready for the plow,  
To Freshmen, the outstretched hand and eager eye which sees the fields.  
For all, hail Echo Staff who put for us in book  
Memories of these College Years.

—Eugene Fair.



DR. EUGENE FAIR  
President



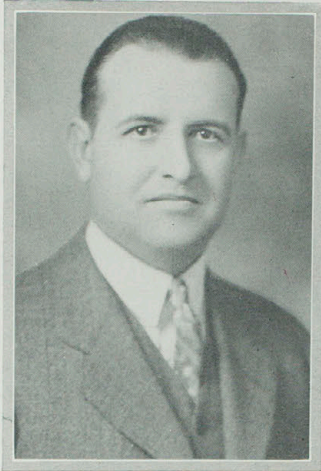


HENRY S. CAULFIELD  
Governor of Missouri



DR. JOHN R. KIRK  
President Emeritus

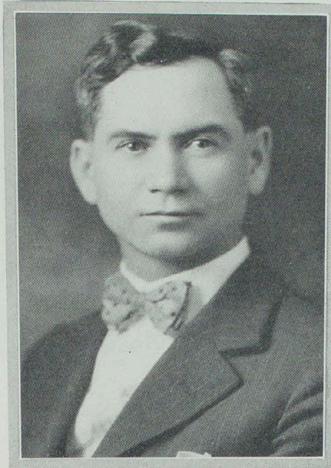




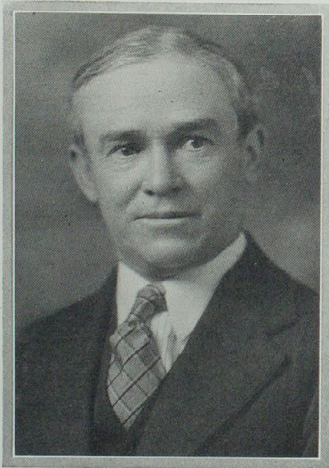
LOUIS A. EUBANK  
B. S., A. M.  
Dean of the Faculty and Head of the  
Division of Education



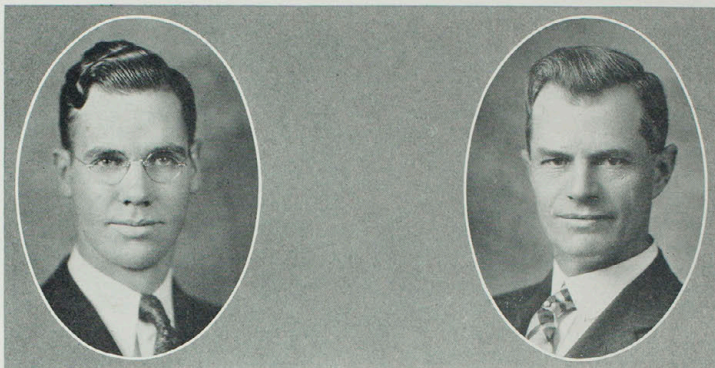
MRS. MARGARET ELLISON  
Dean of Women



STEPHEN E. SMITH  
B. S., S. B., A. M.  
On Leave of Absence  
Registrar and Associate Professor of  
Education



BYRON COSBY  
B. S., A. B., A. M.  
Business Administrator and Professor  
of Mathematics



RALPH EVANS

MR. J. W. HEYD

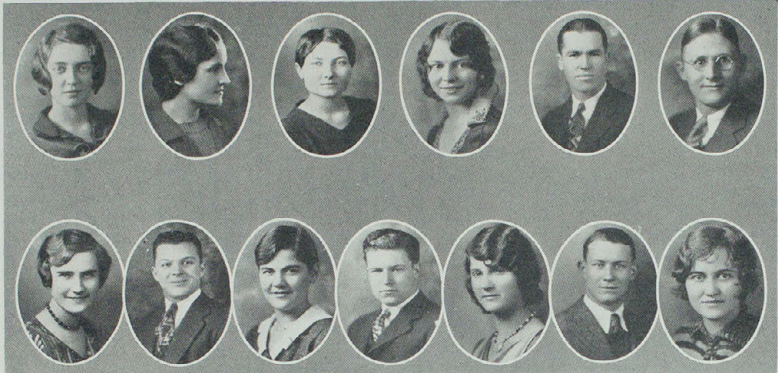
## Student Council

THE aim of the Student Council is to effect an organization of the student body for the purpose of creating a strong self-government and an effective co-operation with the faculty of this college. It is our belief that the student government has been highly successful in developing a greater student interest in activities, and thus, has brought forth stronger student leadership.

The Student Council has held meetings with the faculty during this year, and through these meetings we have created a spirit of co-operation.

The Student Courts are part of this organization, representing the student body in the disposing of any problems which would regularly come under a department of justice, in student life.

The Student Council has been one of the most outstanding extra-curricular activities, and, to the satisfaction of the administration, is gaining in strength and effectiveness each year.



Dorothy McClure, Mildred Carpenter, Florice Siegel, Nina Starbuck, James Ator, Fred Schwengels.  
Lucille Hutchinson, Trusten McArtor, Mary Frances Karle, Basil Kelley, Maurine Balance, Clayton Bigsby, Katherine Wood.



RALPH EVANS, President  
DOROTHY McCLURE, Vice-President

MILDRED CARPENTER, Secretary  
FLORICE SIEGLE, Treasurer

J. W. HEYD, Faculty Sponsor



FRESHMAN REPRESENTATIVES  
Clayton Bigsby, Katherine Wood

JUNIOR REPRESENTATIVES  
Trusten McArtor, Mary Frances Karle

SOPHOMORE REPRESENTATIVES  
Basil Kelley, Maurine Balance

SENIOR REPRESENTATIVES  
Fred Schwengels, Lucille Hutchinson

COUNCILWOMAN AT LARGE  
Jeanette Gregory Willcutt

COUNCILMAN AT LARGE  
James Ator



## Student Courts

### WOMEN'S COURT

Dorothy McClure, *Chief Justice*  
Jeanne Woolf  
Caroline Dunnington  
Nina Starbuck  
Mildred Carpenter  
Elizabeth Chappell  
Edith McGlashon  
Mary Frances Karle  
Winifred Unger  
Mary Beauchamp

### MEN'S COURT

Fred Schwengles, *Chief Justice*  
Robert Fair  
Alva Crow  
Claude Merideth  
Samuel Curtright  
Frank Ficke  
John Ben Jones  
Trusten McArtor  
Ralph Evans  
Richard Ragsdale



### STUDENT COUNCIL COMMITTEES

*Administration*—Ralph Evans, Dorothy McClure.  
*Publicity*—Mildred Carpenter.  
*Student Welfare*—Katherine Wood, Trusten McArtor, Basil Kelley.  
*Social*—Mildred Carpenter, Lucille

Hutchinson, Fred Schwengels.  
*Pep*—Fred Schwengels.  
*Law and Order*—Florice Siegle.  
*Correspondence*—Maurine Ballance.  
*Appointments*—Dorothy McClure, Trusten McArtor, Ralph Evans.



### STUDENT FACULTY COMMITTEES

*Alumni*—John Ben Jones.  
*Approved Grades*—Mary Frances Karle.  
*Awards*—Earl Hatcher.  
*Courtesies*—Florice Siegle.  
*Credentials*—Caroline Dunnington and Claude Merideth.  
*Social*—Mildred Carpenter, Lucille Hutchinson and Fred Schwengels.

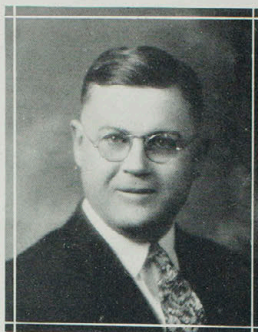
*Curricular*—Lewis Teter and Byron Cosby, Jr.  
*Examinations*—Edith McGlashon.  
*Memorial Fund*—Forest Neale.  
*Nominations*—Dorothy McClure.  
*Recommendations*—Florice Siegle and Ralph Evans.



## Faculty



ZELLA V. BROWN  
B. S., A. B., M. A.  
Assistant Professor of English



W. E. ROSENSTENGEL  
B. S., M. A.  
Assistant Professor of Educa-  
tion



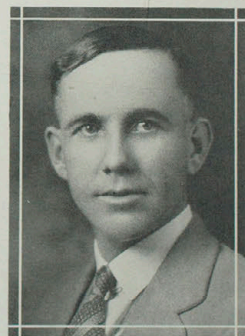
NETTIE H. GRESHAM  
B. S.  
Acting Professor of  
Geography



BARRETT STOUT  
B. S., M. A.  
Associate Professor of Music



ETHEL HOOK  
B. S., M. A.  
Associate Professor of Edu-  
cation and Director of The  
Co-operative Library



KENNETH E. STEELE  
B. S., A. M.  
Assistant Professor of Educa-  
tion



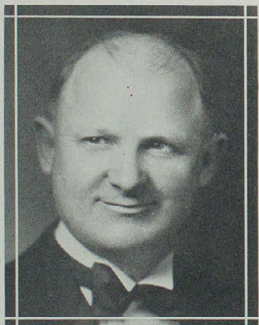
BARBARA G. FREEMAN  
B. S.  
Head Librarian



PAUL O. SELBY  
B. S., A. M.  
Professor of Commerce and  
Head of the Division of  
Commerce



RUTH HOSTLER  
Instructor in Physical Educa-  
tion



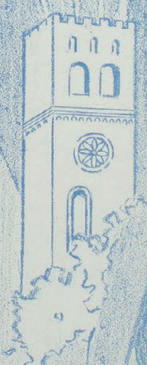
LEWIS E. CLEVENGER  
B. S., A. M.  
Assistant Professor of Poul-  
try Culture



ISABEL RICH  
Instructor in Music

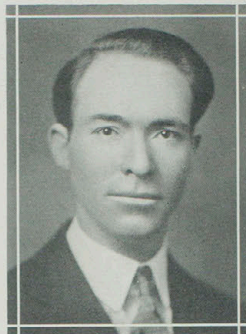


R. E. VALENTINE  
B. S., M. A.  
Assistant Professor of Music





ALMA K. ZOLLER  
Assistant Professor of Health



JOHN HARTY  
B. S., A. M.  
Assistant Professor of Physics



ELIZABETH PRICHARD  
B. S., A. A., A. B., A. M.  
Assistant Professor of English



WILLIS JOSEPH BRAY  
B. S., A. B., A. M.  
Professor of Chemistry and  
Head of the Division of  
Science



SUE GRASSLE  
B. S.  
Instructor in Physical Educa-  
tion



BEN W. LEIB  
B. S.  
Professor of Industrial Arts



BLANCHE BURROW  
B. S.

Assistant Professor of Physical Education



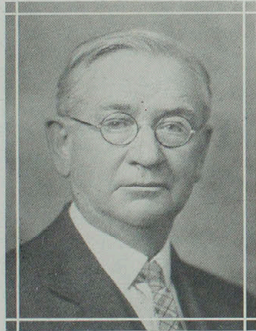
GEORGE HAROLD JAMISON  
B. S., A. M.

Professor of Mathematics and  
Head of the Division of  
Mathematics



BERENICE BEGGS  
B. S., A. M.

Assistant Professor of Education



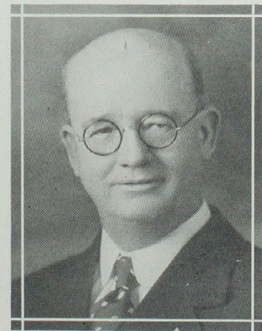
JAMES STEPHEN STOKES  
B. S., Ph. D., M. S., A. M.

Professor of Physics and Physiography and Curator of Equipment and Grounds



SYLVIA BROWNE  
B. S.

Assistant Librarian

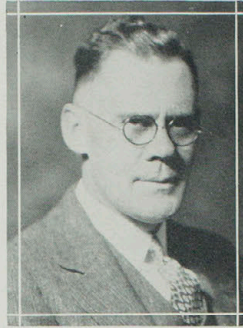


EZRA C. GRIM  
M. D.

Advisor in Health Problems



BRACY CORNETT  
B. S., A. M.  
Assistant Professor of Fine  
and Applied Arts



FRED S. RUSSELL  
B. S., M. S.  
Professor of Animal Hus-  
bandry



EDITH DABNEY  
B. S., A. M.  
Assistant Professor of Fine  
and Applied Arts



DON FAUROT  
B. S., A. M.  
Assistant Professor of Phys-  
ical Education



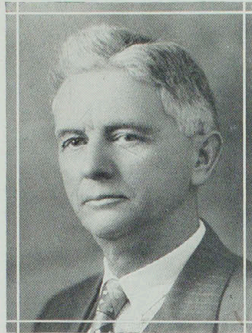
WILLIE WHITSON  
B. S., A. M.  
Assistant Professor and Sup-  
ervisor of Primary Education



JOHN LAFON BIGGERSTAFF  
B. MUS.  
Professor of Music and Head  
of the Division of Arts



MINNIE M. KENNEDY  
B. S., A. M.  
Assistant Professor of Household Science



WARREN JONES  
A. B., A. M.  
Professor of English



BLANCHE C. HOPKINS  
A. B., M. D.  
Assistant Professor of Health



KARL E. WEBB  
B. S.  
Acting Assistant Professor of Music



CLARA YADON  
B. S.  
Assistant Librarian



EUGENE HESS  
B. S.  
Cadet Teacher



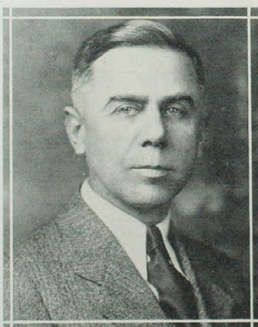
VERA E. FAWCETT  
B. S., A. M.  
Assistant Professor of English



C. H. McCLURE  
B. S., A. M., PH. D.  
Professor of Political Science  
and Head of the Division of  
Social Science



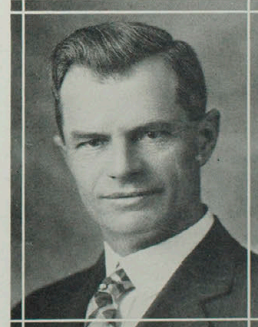
JANE CROW  
PH. B., M. A.  
Assistant Principal of the  
Junior High School



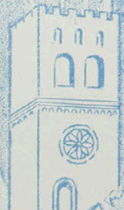
C. R. GREEN  
A. B., M. A., D. O.  
Professor of Public Health  
and Head of the Division of  
Health and Physical Edu-  
cation



CLARA H. CLEVENGER  
PH. B., A. M.  
Professor of Economics and  
Sociology



JACOB W. HEYD  
A. B., PH. M.  
Head of the Extension Divi-  
sion and Head of the Divi-  
sion of Language and Lit-  
erature





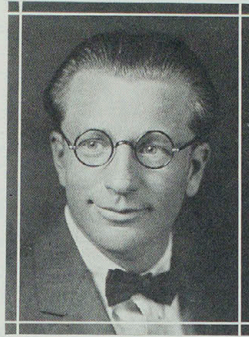
FELIX ROTHSCHILD  
A. B., A. M.

Professor of Education and  
Director of the Demonstration  
School



LLORRA B. MCGEE  
PH. B., M. A.

Assistant Professor of Household  
Arts and Head of the  
Division of Home Economics



CLIFF CORNWELL  
B. S., A. M.

Assistant Professor of Speech



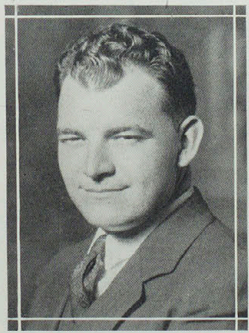
JOHN R. KIRK  
B. S., LL. D.

President Emeritus and Professor  
of Psychology



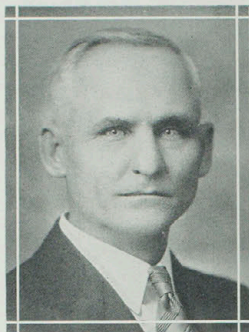
CATHERYN S. HUDSON  
B. S., A. M.

Assistant Professor of Social  
Science



WRAY M. RIEGER  
A. B., M. S.

Assistant Professor of Chemistry



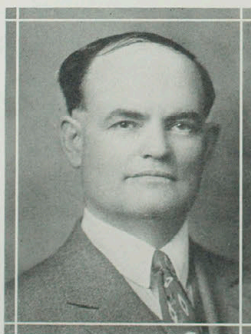
WALLACE J. KNOBBS  
B. S., A. B., M. S.  
Professor of Biology



IRENE DORAN DAILEY  
B. MUS.  
Instructor in Piano



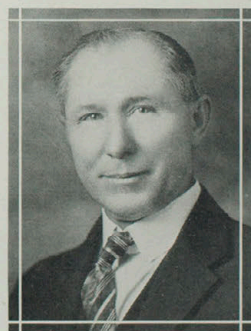
CHAUNCEY SIMPSON  
B. S.  
Instructor in Physical Educa-  
tion



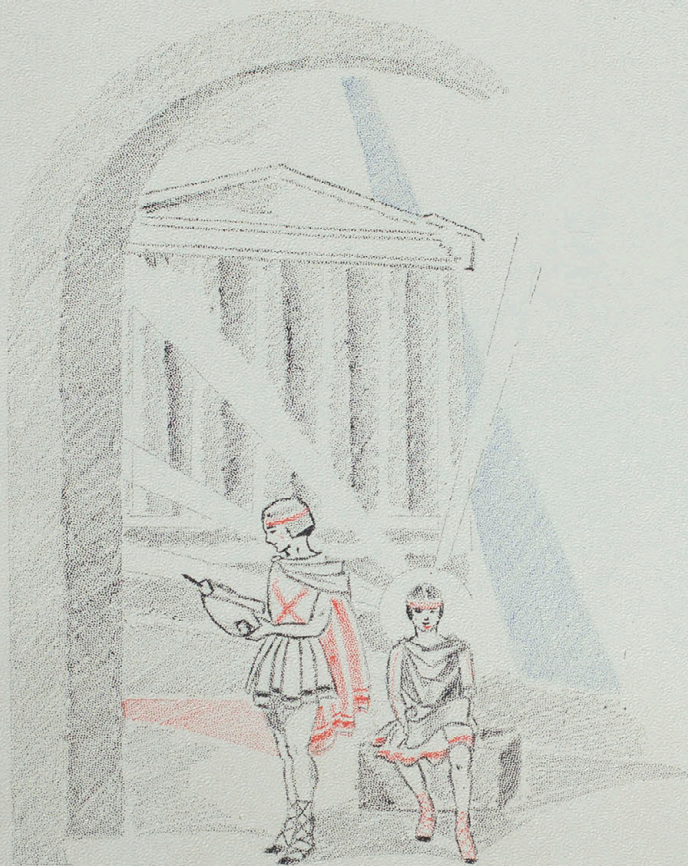
GLENN V. BURROUGHS  
B. S., A. M., PH. D.  
Assistant Professor of His-  
tory



LUCY SIMMONS  
B. S., A. B., A. M.  
Professor of History



W. S. PEMBERTON  
B. S., A. M.  
Professor of Mathematics

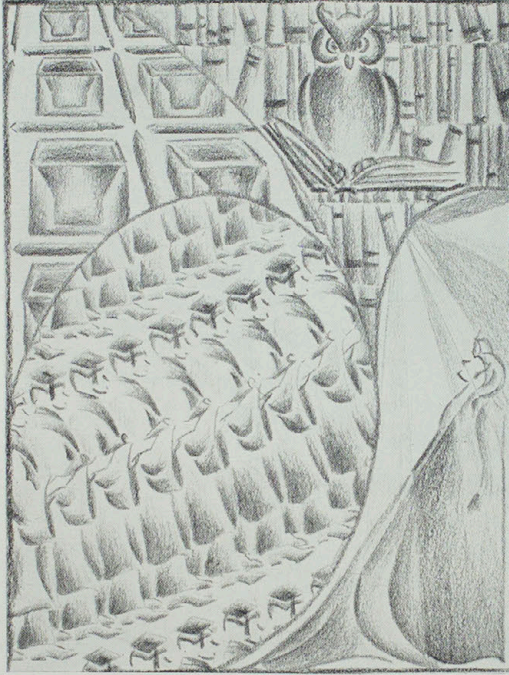


# BOOK TWO

## CLASSES

Greece was the first nation in the world's history to escape from folk-way domination. Greece educated for an ideal social and intellectual order. The task of her education was an intellectual one but——





## Seniors

1930  
ECHO

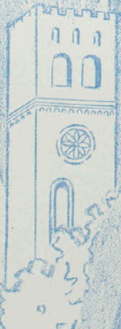


LEWIS TETER, *President*

WINIFRED UNGER, *Vice-President*

DOROTHY McCLURE, *Secretary*

MARY BEAUCHAMP, *Treasurer*



TETER, W. LEWIS                      *La Plata, Mo.*  
 Historical Society, Blue Key, Phi Sigma Pi,  
 Student Court, Alpha Phi Omega, Phi  
 Sigma Epsilon.

UNGER, WINIFRED                      *Kirkville, Mo.*  
 Student Court, W. A. A.

HAINES, NORVILLA L.                      *Clifton Hill, Mo.*

JONES, ROBERT N.                      *La Plata, Mo.*  
 Blue Key, Sigma Tau Gamma, Index Staff,  
 Phi Sigma Pi, Student Court, Historical  
 Society.

BEAUCHAMP, MARY                      *Kirkville, Mo.*  
 Delta Sigma Epsilon, Howlers, Kappa  
 Delta Pi, Dramatic Club, Speech Club,  
 Pan Hellenic, Business Mgr. Echo.

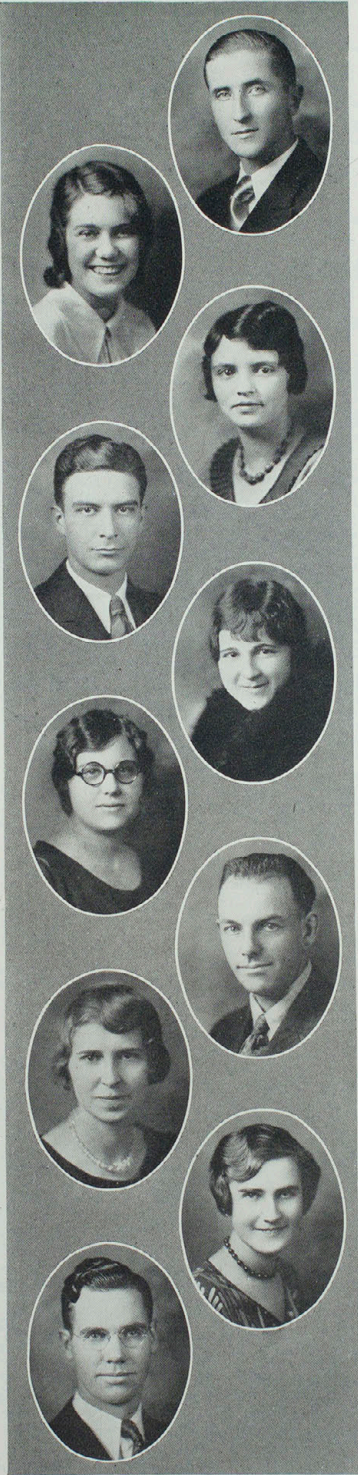
CAUBY, ADELAIDE E.                      *Kirkville, Mo.*  
 Library Club, Dramatic Club.

WATERS, WILLIAM C.                      *Kirkville, Mo.*

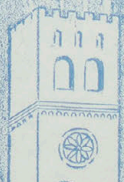
DORR, ETHEL                      *Bevier, Mo.*  
 W. A. A., Kinunka Campfire.

HUTCHINSON, LUCILLE                      *Kirkville, Mo.*  
 Delta Sigma Epsilon, Historical Society,  
 Pan Hellenic, Kappa Delta Pi, Student  
 Council.

EVANS, RALPH                      *La Plata, Mo.*  
 Blue Key, Phi Sigma Epsilon, Student  
 President, Phi Sigma Pi, Kappa Delta Pi.



1930  
 ECHO



1930  
ECHO



COSBY, BYRON JR.                      Kirksville, Mo.  
Sigma Tau Gamma, Debate, Phi Sigma Pi.



FORSYTH, ALICE                      Hannibal, Mo.  
Kappa Delta Pi.



BERRY, MARTHA                      Kirksville, Mo.  
Kappa Delta Pi.



HUMPHREY, BEN                      Kirksville, Mo.  
Phi Sigma Pi, Sigma Zeta, Kappa Delta Pi.



WILSON, LILLIAN                      Cyrene, Mo.  
Historical Society.



SHARP, HELEN T.                      Kirksville, Mo.  
Dramatic Club, Kinunka Campfire.



COTTLE, JAMES                      Columbia, Mo.  
Phi Sigma Epsilon, Football, Basketball.



SCHNELLE, MRS. FLORENCE                      Brashear, Mo.  
Newcomers Club.



CHALLONER, SILVIA                      Kirksville, Mo.  
French Club.



CHADWELL, PAUL W.                      Brashear, Mo.

POWELL, DOROTHY *New Cambria, Mo.*  
Historical Society.

DUNNINGTON, CAROLINE *Springfield, Mo.*  
Sigma Sigma Sigma, Panhellenic, Library  
Club, Historical Society, Kappa Delta Pi.

EVANS, WALTER E. *La Plata, Mo.*  
Phi Sigma Pi.

BEATTY, MARY M. *Milan, Mo.*  
Sigma Sigma Sigma, Dramatic Club.

CHAPPELL, ELIZABETH *La Plata, Mo.*  
Pi Kappa Sigma, Panhellenic, Ellen H.  
Richards, Student Court.

FARMER, GRACE *Cameron, Mo.*

WADDILL, MYRON C. *Kirksville, Mo.*  
Phi Sigma Pi, Dramatic Club, Speech  
Club.

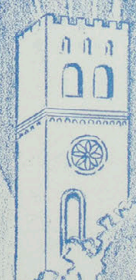
GOOCH, EVA S. *Laclede, Mo.*

COOLEY, WILMA *Kirksville, Mo.*  
Kappa Delta Pi, Honorary Art Club, Ellen  
H. Richards Club.

GELBACH, VIOLA M. *Hurdland, Mo.*  
Pi Kappa Sigma, W. A. A.



1930  
ECHO



# 1930 ECHO



GREAR, RUTH N. *Purdin, Mo.*  
Pi Kappa Sigma, Kappa Delta Pi, Pi Omega  
Pi, Panhellenic, Dramatic Club, Kinunka  
Campfire, W. A. A.

BISSELL, PAUL *Kirkville, Mo.*  
Sigma Tau Gamma, Dramatic Club, De-  
bate, Interfraternity Council.

MASON, ERNEST H. *Brookfield, Mo.*  
Historical Society, Alpha Phi Omega.

WOOLF, JEANNE AUSTIN *Kirkville, Mo.*  
Sigma Sigma Sigma, Kappa Delta Pi.

HURLIMAN, LEILA *Worthington, Mo.*  
Student Nurse.

HENDERSON, FRANCES *Kirkville, Mo.*  
Pi Kappa Sigma, Pi Omega Pi, Kappa Delta  
Pi, Kinunka Campfire, Historical Society,  
Dramatic Club, W. A. A.

STICKLER, EVELYN MAE *Kirkville, Mo.*  
W. A. A., Graduate Nurse.

ADAMS, BERLE *Clarence, Mo.*

RUSSELL, THEODORE C. *Kirkville, Mo.*

NORRIS, MABEL *Kirkville, Mo.*  
Alpha Sigma Alpha.

JORDAN, BESS *Shelbina, Mo.*  
Delta Sigma Epsilon, Dramatic Club,  
Historical Society.

CROW, ALVA L. *Kirksville, Mo.*  
Phi Sigma Epsilon, Blue Key, Phi Sigma  
Pi, Historical Society, Alpha Phi Omega.

SHANHOLTZER, ORVILLE *Braymer, Mo.*  
Sigma Zeta, Phi Sigma Epsilon, Alpha  
Phi Omega.

LOWE, ICEL E. *Kirksville, Mo.*  
Ellen H. Richards Club, Dramatic Club,  
W. A. A.

COX, LOLA A. *Clarence, Mo.*  
Historical Society, Kappa Delta Pi, Delta  
Sigma Epsilon, Dramatic Club.

NAUGHTON, HELEN *La Plata, Mo.*  
Pi Kappa Sigma.

RIMER, BESSIE *Edina, Mo.*

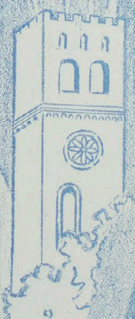
RUNYAN, IVAN *Princeton, Mo.*  
Phi Sigma Pi, Phi Sigma Epsilon.

HARBUR, RAYMOND M. *Kirksville, Mo.*

RANDALL, FANNIE M. *Callao, Mo.*



1930  
ECHO



# 1930 ECHO



CLEM, BERTHA A. *Kirksville, Mo.*

JOHNSTON, CHARLES N. *La Plata, Mo.*  
Sigma Tau Gamma, Blue Key, Index  
Staff, Track.

KENNEDY, EMERY *Edina, Mo.*  
Speech Club.

RICH, ISABELLE *Kirksville, Mo.*  
Sigma Sigma Sigma, Kappa Delta Pi.

HILL, AILEEN *Kirksville, Mo.*  
Honorary Art Club.

BENJAMIN, DOROTHY *Granite City, Ill.*

CARY, EMMA *Hannibal, Mo.*  
Philomathean Club.

NEALE, FOREST *Kirksville, Mo.*  
Phi Sigma Epsilon, Student Court, Yell  
Leader.

JUDD, JAMES E. *Newton, Mo.*  
Phi Sigma Epsilon.

WILLIS, NINA F. *Glenwood, Mo.*

MINEAR, GRACE  
Student Nurse.

Unionville, Mo.

MINTER, LUCILLE  
Kinunka Campfire, Dramatic Club, Historical Society, Howlers, W. A. A.

Knox City, Mo.

BARTLETT, EUGENE  
Honorary Art Club, Blue Key, Phi Sigma Epsilon.

Jamesport, Mo.

KAPPER, BESSIE R.  
Philomathean Club.

Kahoka, Mo.

BROWNING, DOROTHY  
Philomathean Club.

Macon, Mo.

HARLAN, HENRY W.

Prairie Hill, Mo.

CASLER, MILDRED  
Pi Omega Pi, Kappa Delta Pi.

Clarence, Mo.

GARRISON, SYLVIA  
Student Nurse.

Kirksville, Mo.

HAUPTMAN, EDWARD

Kirksville, Mo.

THURMAN, NELLIE  
Historical Society.

Shelbyville, Mo.



1930  
ECHO



1930  
ECHO



QUINN, MIRIAM                      *Kirksville, Mo.*  
Sigma Sigma Sigma.



ROBINSON, RUBY LEE              *Green City, Mo.*  
Index Staff, Pi Kappa Sigma, Howlers.



McCLURE, DOROTHY              *Kirksville, Mo.*  
Historical Society, Pi Kappa Sigma, Student Council, Kinunka Campfire.



FICKE, FRANK ROY                *St. Louis, Mo.*  
Sigma Tau Gamma, Blue Key, Interfraternity Council, Student Court, Echo Staff.



GREEN, FORREST                    *Nowinger, Mo.*  
Phi Sigma Epsilon, Historical Society.



HOSTLER, RUTH                    *Grafton, W. Va.*  
Instructor at Junior High School.



HANDLON, AGNES                    *Trenton, Mo.*  
Ellen H. Richards Club.



DOWNING, WIRT                    *Columbia, Mo.*  
Sigma Tau Gamma, Football, Historical Society.



MILLER, GRAYCE E.                *Jackson, Mo.*  
Dramatic Club.



COLLIPRIEST, ELVA M.            *St. Charles, Mo.*  
Pi Omega Pi.

WISE, MANIE                      Savannah, Mo.  
Delta Sigma Epsilon, Pi Omega Pi, Pan-  
hellenic.

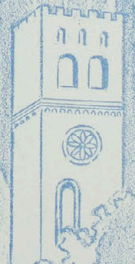
FORRESTER, EVELYN              Memphis, Mo.  
Pi Kappa Sigma.

SCHWENGLES, FREDRIC              Sheffield, Ia.  
Historical Society, Student Council, Dra-  
matic Club, Blue Key, Phi Sigma Epsilon,  
Football, Track.

STARKS, RUTH D.                      Kirksville, Mo.



1930  
ECHO





IN MEMORIAM

©

CLARENCE PACK

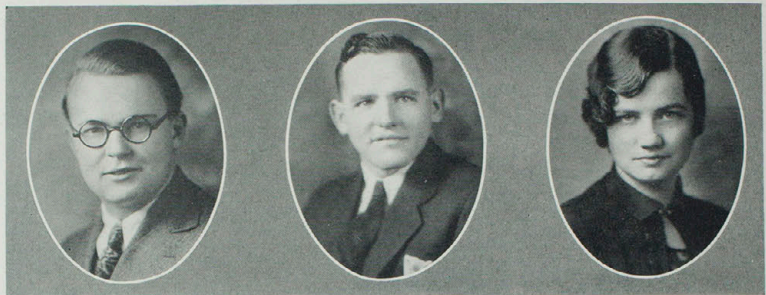
*Senior*  
*Class of 1930*

BORN SEPTEMBER 25, 1906  
DIED FEBRUARY 18, 1930



## Juniors

1930  
ECHO



ROBERT FAIR, *President*

SAMUEL CURTRIGHT, *Vice-President*

MARTHA COOPER, *Secretary and Treasurer*



MAITLAND, ADAH MAE La Plata, Mo.



BUCHANAN, MILDRED Philadelphia, Mo.  
W. A. A., Historical Society.



GILBERT, MARY ANN Fairfield, Iowa



WELLS, MARIE Lucerne, Mo.  
Delta Sigma Epsilon.



EVANS, HAZEL La Plata, Mo.  
Kinunka Campfire.



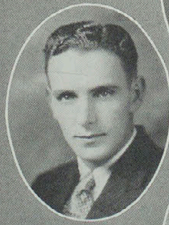
ADAMS, WAYFEL C. Memphis, Mo.



BOWERS, MATTIE MAE Clarence, Mo.  
Ellen H. Richards Club.



MARTIN, LELAND Maywood, Mo.  
Phi Sigma Epsilon.



GILLILAND, ALTA MAY Kirksville, Mo.  
Pi Omega Pi.



BRAGG, MARGARET J. La Plata, Mo.  
Index Staff.



1930  
ECHO



MADDOX, CORDIA MAE Steedman, Mo.



SHUNK, ARMILDRIDGE Kirksville, Mo.  
Pi Omega Pi.



GRAMSCH, ULYSSES Queen City, Mo.



PETERSON, ZELDA MAE Greentop, Mo.



BARNES, ROSE Queen City, Mo.  
Historical Society.



ROBINSON, RUTH Sturgeon, Mo.  
Alpha Sigma Alpha, W. A. A., Panhellenic,  
Historical Society.



COOPER, MARTHA Brookfield, Mo.  
Delta Sigma Epsilon, Howlers, Pi Omega Pi.



BOLAND, VIOLET Lucerne, Mo.  
Newcomers Club.



STAMM, ALOUISE Moberly, Mo.  
Kinunka Campfire, W. A. A.



ANDERSON, MARY Kahoka, Mo.  
W. A. A.

GOLDEN, VIRGINIA

*La Belle, Mo.*

DIMMITT, HELEN B.

*Greencastle, Mo.*

Delta Sigma Epsilon.

KARLE, MARY FRANCES

*Linneus, Mo.*

Alpha Sigma Alpha, Pi Omega Pi, Panhellenic, Student Council, Howlers, Library Club.

TURNER, RUTH

*Linneus, Mo.*

COURTNEY, VIRGINIA

*Memphis, Mo.*

Alpha Sigma Alpha.

DODSON, EVELYN

*Livonia, Mo.*

Kinunka Campfire, Pi Omega Pi.

INBODY, DOROTHY

*Kirksville, Mo.*

Historical Society.

MOORE, JAMES RUSSELL

*Bethel, Mo.*

VANLANINGHAM, L. W.

*McAllen, Texas*

Historical Society, Index Staff, Phi Sigma Epsilon.

GREEN, KATHERINE

*Wayland, Mo.*

Ellen H. Richards Club.



1930  
ECHO

# 1930 ECHO



EDWARDS, NAOMI QUIGLEY *Green City, Mo.*  
Sigma Sigma Sigma, Student Nurse.

ATOR, JAMES *La Plata, Mo.*  
Sigma Tau Gamma, Student Council,  
Blue Key, Football.

HILL, ELISHA B. *Youngstown, Mo.*  
Phi Sigma Epsilon.

STARBUCK, NINA FLORENCE *Queen City, Mo.*  
Delta Sigma Epsilon, Howlers, Dramatic  
Club, W.A. A.

MOSELEY, ELIZABETH *Liege, Mo.*  
Philomathean Club.

NEWTON, EDNA *La Plata, Mo.*  
Alpha Sigma Alpha, Student Nurse.

RANDALL, HELEN *Callao, Mo.*  
Student Nurse.

HENRY, WYMAN *Ringling, Okla.*  
Sigma Tau Gamma, Library Club, Foot-  
ball, Basketball.

BLAINE, MAYHUE D. *Bible Grove, Mo.*  
Phi Sigma Epsilon.

MAUPIN, BERNICE *Shelbina, Mo.*  
Alpha Sigma Alpha, Orchestra.

JONES, DOROTHY                      *Kirksville, Mo.*  
Delta Sigma Epsilon, Pi Omega Pi.

JONES, JOHN BEN                      *La Plata, Mo.*  
Sigma Tau Gamma, Editor Echo, Student  
Court, Blue Key, Interfraternity Council.

FAIR, EUGENE JR.                      *Kirksville, Mo.*  
Sigma Tau Gamma, Blue Key, Historical  
Society.

CARPENTER, MILDRED                      *Rothville, Mo.*  
Alpha Sigma Alpha, Student Council.

PERRY, ETHEL                      *Dawn, Mo.*  
Ellen H. Richards Club, W. A. A.

GREGORY, CLEO                      *Newtown, Mo.*  
Dramatic Club, Kinunka Campfire.

BARNETT, ZELPHA D.                      *Kirksville, Mo.*  
Delta Sigma Epsilon, Howlers, Historical  
Society, W. A. A.

HOAG, CLIFFORD C.                      *Kirksville, Mo.*  
Sigma Tau Gamma, Historical Society.

SEARS, WENDELL                      *Macon, Mo.*  
Sigma Tau Gamma, Library Club, His-  
torical Society, Track, Alpha Phi Omega.

SCHOFIELD, RUTH E.                      *Shelbyville, Mo.*  
Kinunka Campfire.



1930  
ECHO



1930  
ECHO



WHITNEY, CLOY E.                      Kirksville, Mo.  
Phi Sigma Epsilon, Historical Society.



CURTRIGHT, SAMUEL                      Centralia, Mo.  
Phi Sigma Epsilon.



HOUNSON, NOPTA B.                      Glenwood, Mo.  
Historical Society.



DONALDSON, ROBERT                      Unionville, Mo.  
Library Club, Band, Sigma Tau Gamma.



ISRAEL, ERNEST A.                      Memphis, Mo.



MCCLURE, MARK                      Revere, Mo.  
Phi Sigma Epsilon.



HOUSER, ARTHUR M.                      Little Falls, Minn.  
Phi Sigm's Epsilon, Football.



SANDNER, MABLE                      Macon, Mo.



MCARTOR, TRUSTEN                      New Boston, Mo.  
Phi Sigma Epsilon, Student Council,  
Football, Basketball.



CRAIG, JAMES T.                      Kirksville, Mo.  
Phi Sigma Pi, Football, Band, Company K.

RUNGE, MARGARET *Brookfield, Mo.*  
Pi Kappa Sigma, Historical Society.

MURRELL, CHARLES, JR. *Kirksville, Mo.*  
Sigma Tau Gamma, Football.

RAGSDALE, RICHARD *Hunnewell, Mo.*  
Sigma Tau Gamma, Index Staff, Blue Key.

GASHWILER, JOHN H. *Novinger, Mo.*  
Phi Sigma Epsilon.

SIEGLE, FLORICE *Kirksville, Mo.*  
Sigma Sigma Sigma, Howlers, Student  
Council.

FORQUER, ETHEL MAE *Brashear, Mo.*  
Honorary Art Club.

SNYDER, PAUL *Kirksville, Mo.*  
Phi Sigma Epsilon.

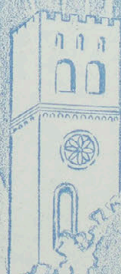
MAUPIN, WEEKS *Lentner, Mo.*  
Phi Sigma Epsilon.

LEDFORD, CLELL *Stahl, Mo.*

WORTHINGTON, STELLA R. *Kirksville, Mo.*  
Philomathian.



1930  
ECHO



1930  
ECHO

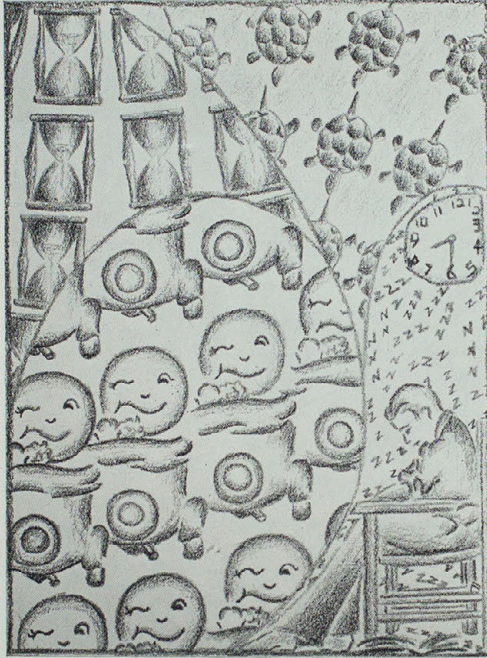


SEWELL, ALICE  
Dramatic Club.

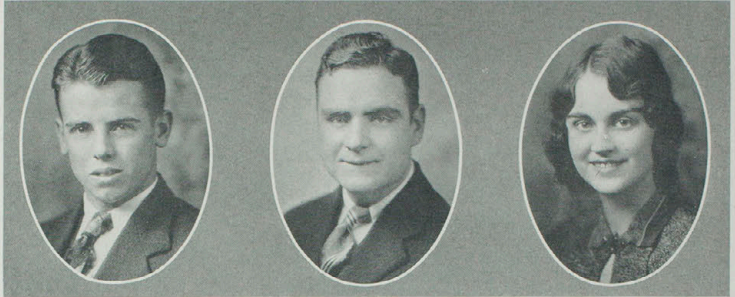
Graham, Mo.

SLOOP, CLARE  
Latin Club.

Greentop, Mo.



## Sophomores



EARL HATCHER, *President*

JAMES DAUGHERTY, *Vice-President*

NADINE CARPENTER, *Secretary and Treasurer*

HAYS, WINEVA C. *Green City, Mo.*  
Ellen H. Richards Club, Kinunka Camp-  
fire.

SINGLEY, MAUDE ETTA *Moulton, Iowa*  
Pi Kappa Sigma.

WHEATCRAFT, MARIE *La Plata, Mo.*  
W. A. A.

FLOREA, MARGARETT E. *Knox City, Mo.*

LITTON, WINOKA *Lock Springs, Mo.*  
W. A. A.

CURRY, CLARK HAROLD *Arbela, Mo.*

BRINKLEY, DOROTHY *Linneus, Mo.*

PALMER, WINNIE L. *King City, Mo.*

CHILDERS, DORA CLARISSA *McFall, Mo.*  
Language and Literature Club.

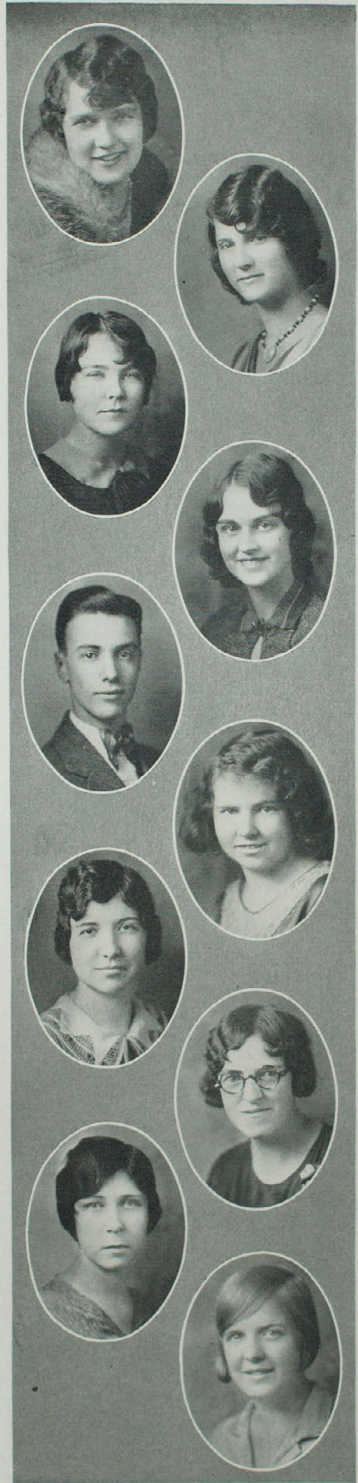
SCOBEE, JUANITA LENORA *Kirkville, Mo.*



1930  
ECHO



# 1930 ECHO



JARMAN, RUTH  
Dramatic Club. Maywood, Mo.

BALLANCE, MAURINE Kirksville, Mo.  
Sigma Sigma Sigma, Library Club, W. A. A.

FLEMING, ANNE DOROTHY Atlanta, Mo.  
Sigma Sigma Sigma, Howlers, W. A. A.

CARPENTER, NADINE Rothville, Mo.  
Alpha Sigma Alpha.

MURFIN, WINFRED Queen City, Mo.  
Orchestra, Band.

McGOLDRICK, MILDRED Glenwood, Mo.

KIMBROUGH, GRACE Clifton Hill, Mo.  
Pi Kappa Sigma.

KELSEY, KATHRYN MILDRED Greentop, Mo.

KENNEDY, MILDRED MARYBELLE Kirksville, Mo.

EVANS, MRS. WALTER E. La Plata, Mo.

CASSITY, CLARA E.

Purdin, Mo.



WOOD, MARYETTA

Moulton, Ia.



TURNER, CARL W.

Kirkville, Mo.

Dramatic Club, Phi Sigma Epsilon, Speech Club, Historical Society.



DICKINSON, ALICE

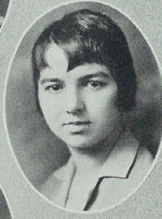
Tina, Mo



GERSTER, ELSIE

Paris, Mo.

Sigma Sigma Sigma, Dramatic Club.



EDWARDS, LOIS

Moulton, Ia.



HOWARD, IMOGENE

Center, Mo.



HURST, CLARENCE

Gilman City, Mo.

Phi Sigma Epsilon.



SHARP, PANSY VIRGINIA

Edina, Mo.



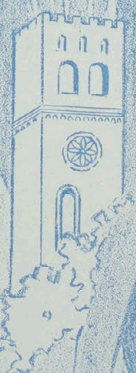
HOWLAND, MILDRED

Kirkville, Mo.

Band.



# 1930 ECHO



1930  
ECHO



JOHNSTON, HAZEL L. *Brashear, Mo.*  
Pi Omega Pi.



WRIGHT, VIVIAN J. *Queen City, Mo.*  
W. A. A.



WILHITE, MARIE *Greencastle, Mo.*  
Student Nurse.



TURNER, JAMES *Columbia, Mo.*  
Sigma Tau Gamma, Football.



BUCHANAN, MAIMEE *Philadelphia, Mo.*  
W. A. A., Index Staff.



MERCER, CLEO *Kirksville, Mo.*  
Alpha Sigma Alpha.



MOORMAN, RICHARD *Kirksville, Mo.*  
Sigma Tau Gamma, Track.



CLINKENBEARD, JUSTIN *Elmer, Mo.*  
Dramatic Club.



MORGAN, LOUISE *La Belle, Mo.*  
Kinunka Campfire.



WEST, FRANKIE *Altamont, Mo.*  
Kinunka Campfire, W. A. A.

BECKER, ROLLIN  
Sigma Tau Gamma.

Kirksville, Mo.



WILSON, MARY  
Delta Sigma Epsilon.

Vandalia, Mo.



MILEHAM, VIRGINIA M.  
Kinunka Campfire.

Wyaconda, Mo.



BINGHAM, HAROLD JR.

Browning, Mo.



BROWN, JESSIE  
W. A. A.

Revere, Mo.



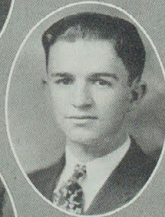
NOLAND, VINCEL

Lucerne, Mo.



MOCK, KENNETH  
Sigma Tau Gamma.

Kirksville, Mo



GEERY, ADELAIDE  
Student Nurse.

Lancaster, Mo.



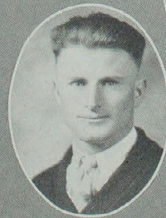
JAYNES, MAXINE  
Dramatic Club, Chorus.

Humphreys, Mo.

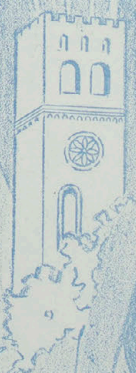


MOTTER, NOAH

Novinger, Mo.



# 1930 ECHO



1930  
ECHO



FAIR, MRS. JESSIE C.      *Kirksville, Mo.*  
Alpha Sigma Alpha, Historical Society.

ELLIS, NOEL      *Kirksville, Mo.*  
Sigma Tau Gamma.

LOVE, JOSEPH      *Kirksville, Mo.*  
Sigma Tau Gamma, Speech Club, Dramatic Club.

FAIR, ELINOR      *Kirksville, Mo.*  
Alpha Sigma Alpha, Howlers.

JOHNSON, MARION      *Kirksville, Mo.*  
Pi Kappa Sigma, Philomathean.

STEENBOCK, WALTER      *Monett, Mo.*  
Sigma Tau Gamma.

SWAIN, HARRIET JANE      *Kirksville, Mo.*  
Dramatic Club, Index Staff, Philomathean Club.

BURKHALTER, CHARLOTTE      *Kirksville, Mo.*  
Student Nurse.

WOLF, DONALD      *South Gifford, Mo.*

TROESTER, ADELBERT      *Kirksville, Mo.*  
Sigma Tau Gamma.

BOURN, FRED  
Dramatic Club, Speech Club.

Glenwood, Mo.

EVANS, OPAL  
Student Nurse.

Powersville, Mo.

COLLOP, GERALDINE  
Delta Sigma Epsilon.

Kirksville, Mo.

BOLTON, GLEN  
Phi Sigma Epsilon.

Lancaster, Mo.

NORVELL, PEARL MARIE  
Ellen H. Richards Club.

Linneus, Mo.

PITTMAN, NADINE  
W. A. A.

Perry, Mo.

WOOD, CLYDE H.  
Sigma Tau Gamma, Speech Club.

Paris, Mo.

KETCHUM, MILDRED  
Dramatic Club.

Marceline, Mo.

MANRING, FLORENCE

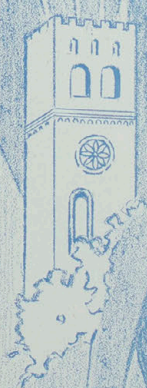
McFall, Mo.

HAMILTON, JOHN  
Dramatic Club, Phi Sigma Pi, Speech Club,  
Sigma Zeta.

Novinger, Mo.



1930  
ECHO



1930  
ECHO



SNEED, BERNICE                      *Kirksville, Mo.*  
Sigma Sigma Sigma, Honorary Art Club,  
Echo Staff.



HARTFORD, HERBERT              *Worthington, Mo.*  
Sigma Tau Gamma.



ROSS, W. E.                              *La Belle, Mo.*  
Sigma Tau Gamma, Speech Club.



LINK, ANNA MARGARET          *Kirksville, Mo.*  
Sigma Sigma Sigma, Honorary Art Club,  
Howlers.



GARTH, HELEN                              *Kirksville, Mo.*  
Sigma Sigma Sigma, Honorary Art Club,  
Howlers, Dramatic Club, Echo Staff.



MORGAN, CAROL                              *Unionville, Mo.*  
Sigma Sigma Sigma.



KARLE, DORIS                                      *Linneus, Mo.*  
Alpha Sigma Alpha, Student Nurse.



HATCHER, EARL                                      *Kirksville, Mo.*  
Sigma Tau Gamma, Football, Track,  
Blue Key.



TETLOW, DANIEL                                      *Mendon, Mo.*  
Sigma Tau Gamma, Track.



MACLEAN, FLORA                                      *Milan, Mo.*  
Delta Sigma Epsilon, Dramatic Club.

BOLTON, EVA WOOD                      *Kirksville, Mo.*  
Student Nurse.

CROW, FRANCES                              *Kirksville, Mo.*  
Student Nurse.

MCCAMPBELL, ANNA MERLE, *Kirksville, Mo.*  
Panhellenic, Alpha Sigma Alpha, Howlers,  
Dramatic Club.

KELLEY, BASIL                              *Amory, Miss.*  
Football, Sigma Tau Gamma, Blue Key  
Student Council.

MCCULLY, HOWARD                      *Kirksville, Mo.*  
Company K, Sigma Tau Gamma.

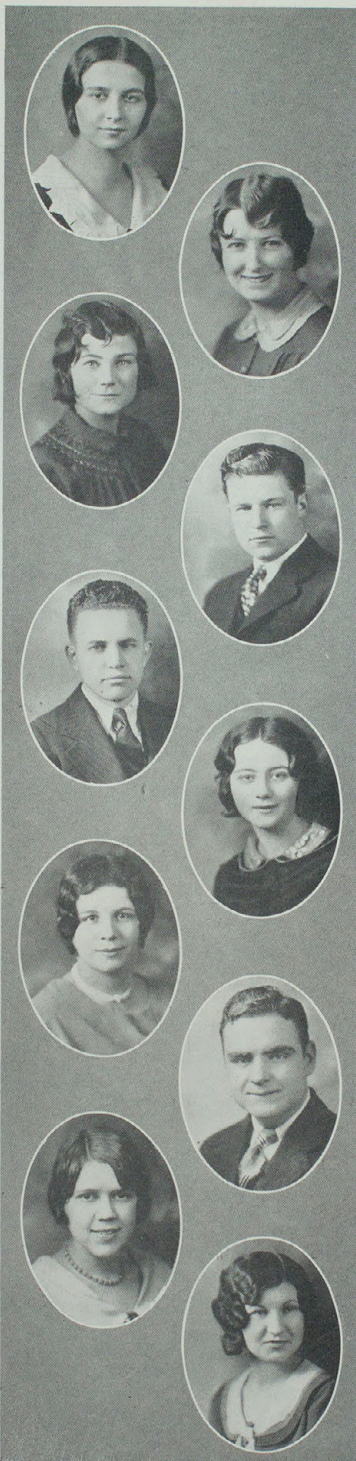
GROSS, THELMA                              *Kirksville, Mo.*  
Delta Sigma Epsilon.

PROBST, DOROTHY                      *Kirksville, Mo.*  
Alpha Sigma Alpha, Howlers.

DAUGHERTY, JAMES                      *Hannibal, Mo.*  
Sigma Tau Gamma, Football.

BONDURANT, LUCILLE                      *Kirksville, Mo.*  
Delta Sigma Epsilon, Howlers, Dramatic  
Club, French Club, W. A. A.

BRAMBLE, FAYE                              *Green City, Mo.*  
Sigma Sigma Sigma.



1930  
ECHO





McGHEE, FRANCES

*Purdin, Mo.*



TOLLENAAR, RENELDA

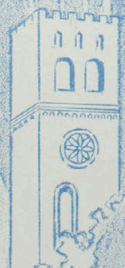
*Kirksville, Mo.*

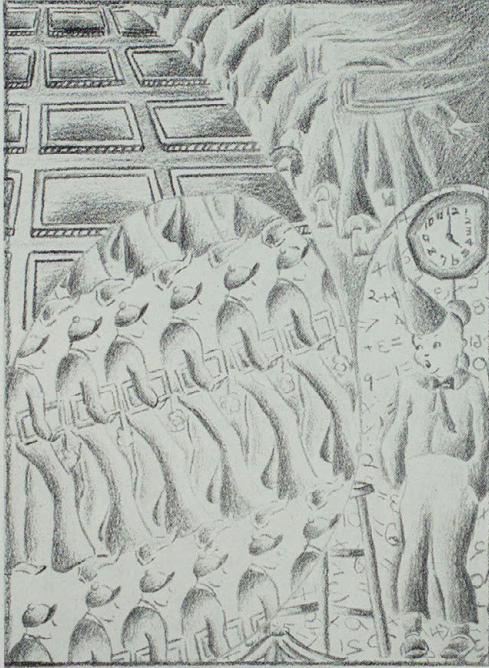


ROLLINS, DOROTHY

*Kirksville, Mo.*

Pi Kappa Sigma, W. A. A.





# Freshmen

1930  
ECHO



DALE ATTEBERY, *President*

VIRGINIA DODSON, *Vice-President*

ANNA AVIS AUSTIN, *Secretary and Treasurer*

PETTIGREW, GEORGE CARL      Cabool, Mo.  
Sigma Tau Gamma, Basketball.

LOWE, JUANITA                      Kirksville, Mo.  
W. A. A.

McGEE, LOUISE                      La Plata, Mo.

LAMPSON, JAMES CALVIN      Wellsville, Mo.  
Sigma Tau Gamma, Library Club.

NEWTON, ALBERTA                  Macon, Mo.

AUSTIN, ANNA AVIS                  Kirksville, Mo.  
Sigma Sigma Sigma, Echo Staff.

LESLIE, WAYNE T.                      La Belle, Mo.  
Company K.

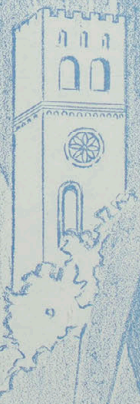
NUNN, PAULINE W.                      Maywood, Mo.  
Dramatic Club.

BOYER, MARY BELLE                      Gorin, Mo.

MARTIN, HAROLD                      Coatsville, Mo.



1930  
ECHO



1930  
ECHO



SCHROCK, JOSEPH

Purdin, Mo.

JACOBS, JUANITA OLIVE  
W. A. A.

Kirksville, Mo.

HAGANS, EDNA MAY

Kirksville, Mo.

LAKIN, EDWARD  
Dramatic Club, Speech Club.

Kahoka, Mo.

McWILLIAMS, CHRISTENA  
W. A. A.

Leonard, Mo.

BEHYMER, MARIE G.  
W. A. A.

Atlanta, Mo.

McCOLLUM, FLOYD L.

Winnigan, Mo.

McGOLDRICK, FLORENCE  
W. A. A., Dramatic Club.

Glenwood, Mo.

LOCK, THELMA  
Dramatic Club.

Kirksville, Mo.

McFARLAND, WM. PRIEST  
Dramatic Club.

Paris, Mo.

1930  
ECHO

BIRNEY, JOHN W.                      *Glenwood, Mo.*  
Sigma Tau Gamma.



DODSON, VIRGINIA RUTH              *Kirksville, Mo.*



GATES, LORRAINE                      *Macon, Mo.*



JOHNSON, JOHN D.                      *Cabool, Mo.*  
Sigma Tau Gamma.



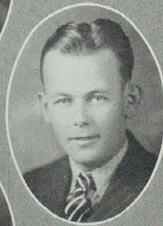
INLAW, EDITH GENEVA                *Perry, Mo.*



MILLER, OUIDA                      *Queen City, Mo.*  
W. A. A.



BAKER, RAYMOND                      *Winigan, Mo.*  
Sigma Tau Gamma, Dramatic Club.



CAMERON, MARJORIE                *Glenwood, Mo.*  
W. A. A., Dramatic Club.



SALISBURY, NORMA                      *Kirksville, Mo.*  
Honorary Art Club.



SUTTON, PAUL                      *Farber, Mo.*



1930  
ECHO



JONES, PAUL *New Cambria, Mo.*



STANBERRY, RUTH IRENE *Moulton, Ia.*



SAGASER, EDITH *Bevier, Mo.*



MITCHELL, HAROLD *Lancaster, Mo.*  
Sigma Tau Gamma.



SPENCER, MARYBELLE *La Plata, Mo.*  
Dramatic Club.



WOOD, KATHERINE *New London, Mo.*  
Alpha Sigma Alpha, Student Council.



LIEURANCE, LESLIE MONROE *Cabool, Mo.*  
Company K.



TAYLOR, LOVINA R. *Hurdland, Mo.*



LILLARD, ELIZABETH MORRIS *Kirksville, Mo.*  
Philomathean Club, W. A. A.



GREGORY, STERLING A. *La Belle, Mo.*

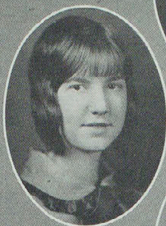
TOWNSEND, MERRIAM  
W. A. A.

Kirksville, Mo.



PATTEN, BEULA

Kirksville, Mo.



JOHNSON, MARJORIE

Baring, Mo.



GOTSCHALL, MARGARET

Coffer, Mo.



EASLEY, EUNICE

Kirksville, Mo.



COOK, BEULAH L.

Green Castle, Mo.



McEWEN, OPAL  
W. A. A.

Novelty, Mo.



McDUFFEE, MYRTLE  
W. A. A.

Atlanta, Mo.



MERCER, BERNEICE  
W. A. A.

La Plata, Mo.



BOWLS, ETHEL BERNICE

Kirksville, Mo.





BARNES, FAY *Atlanta, Mo.*



ROLLINS, VERAL *Kirksville, Mo.*  
Pi Kappa Sigma, Dramatic Club.



PARK, RUTH C. *Centralia, Mo.*  
W. A. A.



DRUM, DOROTHY MILDRED *La Plata, Mo.*  
Dramatic Club.



McEWEN, LENNA *Cherry Box, Mo.*  
W. A. A.



POWERS, MADDOLYN *Perry, Mo.*



MOORE, INEZ L. *Green Castle, Mo.*



BROWN, EVA JANE *Melbourne, Mo.*



FRENCH, ALMA L. *Granger, Mo.*



PARIS, ELBA *Dawn, Mo.*

1930  
ECHO

O'BRIANT, MARGARET      Lancaster, Mo.



LOWRANCE, MARJORIE E.      Kirksville, Mo.



ANDERSON, HAZEN      Kirksville, Mo.  
Sigma Tau Gamma.



SMITH, HELEN      Queen City, Mo.



WHEATCRAFT, SAMMIE      La Plata, Mo.  
W. A. A.



BUTLER, VIRGINIA      Macon, Mo.



HASELWOOD, LILA LEIGH      Knox City, Mo.



ATTEBERY, DALE      Kirksville, Mo.  
Echo Staff, Sigma Tau Gamma.



JAYNES, ALMIRA      North Salem, Mo.



COSBY, LOUISE      Kirksville, Mo.





LEACH, ARIEL  
W. A. A.

Middletown, Mo.



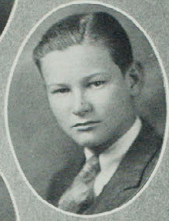
STOFEL, FRANCES

Kirksville, Mo.



MOORE, HELEN  
Dramatic Club.

Elsberry, Mo.



SELWAY, WAYNE

Williamstown, Mo.



HUFFMAN, JUANITA

Kirksville, Mo.



CONNER, GOLDIE ETHEL

Chillicothe, Mo.



GARRISON, NEAL  
Sigma Tau Gamma.

Unionville, Mo.



HUME, GERTRUDE E.  
W. A. A.

Kahoka, Mo.



SCHNEIDER, EDITH

La Plata, Mo.



MORELOCK, MILDRED  
W. A. A., Ellen H. Richards Club.

Greencastle, Mo.

DAVIS, LONA

*Knox City, Mo.*

BIGSBY, CLAYTON

*Kirksville, Mo.*

Sigma Tau Gamma, Football, Student Council.

BURNETT, GLENN R.

*Clarence, Mo.*

Sigma Tau Gamma.

SPENCER, IRENE

*Gibbs, Mo.*

FLANAGAN, ESTHER

*Kirksville, Mo.*

BRICKEY, ETHEL

*Revere, Mo.*

Student Nurse.

DARR, LILLIAN

*Emerson, Mo.*

HILL, CHESTER W.

*Youngstown, Mo.*

Phi Sigma Epsilon.

UNASH, WILLIAM

*Kirksville, Mo.*

Sigma Tau Gamma, Band.

PERRY, ESTHER ELIZABETH

*Dawn, Mo.*



1930  
ECHO

1930  
ECHO



WISEMAN, REX      Colorado Springs, Colo.  
Latin Club.



GRAHAM, VIVIAN      Kirksville, Mo.  
W. A. A.



HOLMAN, MARGARET D.      Hurdland, Mo.  
Speech Club, Dramatic Club.



HEWITT, THELMA M.      Bethel, Mo.



MULLENAX, RETHA      Coffey, Mo.



WALKER, CHARLES      Green City, Mo.  
Sigma Tau Gamma.



HUME, ROSCOE      Kahoka, Mo.



FINEGAN, MAURINE      Sterling, Colo.



MCCAMPBELL, GAEL      Kirksville, Mo.



GLADNEY, CHARLOTTE      Elsberry, Mo.

WALKER, MARVIN  
Sigma Tau Gamma.

*Green City, Mo.*

WOOD, YVONNE  
Student Nurse.

*Millard, Mo.*

MANNING, PANETTA  
Latin Club.

*Kirksville, Mo.*

HAMMOND, MORRIS  
Sigma Tau Gamma, Football, Echo Staff,  
Library Club.

*Ringling, Okla.*

HITCH, FRED STEELE  
Student Nurse.

*Novinger, Mo.*

SPENCER, MARGARETTA  
Kinunka Campfire, Band.

*Kirksville, Mo.*

CREEK, JOSEPH

*Memphis, Mo.*

STROCK, THELMA

*Kirksville, Mo.*

VAUGHN, RUTH  
Student Nurse.

*Kirksville, Mo.*

KEETHLER, JAMES  
Phi Sigma Epsilon.

*Memphis, Mo.*



# 1930 ECHO



1930  
ECHO



LANGKOP, EARL  
Jefferson City, Mo.  
Sigma Tau Gamma.



SPENCER, ZELMA  
Gibbs, Mo.



REESE, DOROTHY  
Student Nurse.  
Kirksville, Mo.



CRAWFORD, FINIS  
Phi Sigma Epsilon.  
Kirksville, Mo.



HOUSE, RICHARD  
La Plata, Mo.  
Sigma Tau Gamma, Football.



RINGLAND, ERNEST  
Laclede, Mo.



OWINGS, GLADYS  
Unionville, Mo.



CHADWELL, UNA GRACE  
Dramatic Club.  
Kirksville, Mo.



BARTLETT, CARL  
Phi Sigma Epsilon, Band.  
Kirksville, Mo.



KEETHLER, RAY  
Memphis, Mo.  
Phi Sigma Epsilon, Track.



BAKER, VELMA  
Student Nurse

*Blythedale, Mo.*



ROBBINS, THELMA

*Glenwood, Mo.*

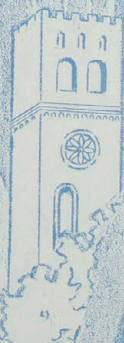


CLEM, SHIRLEY B.

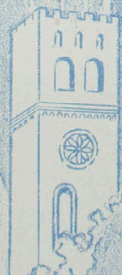
*Kirksville, Mo.*



1930  
ECHO



1930  
ECHO



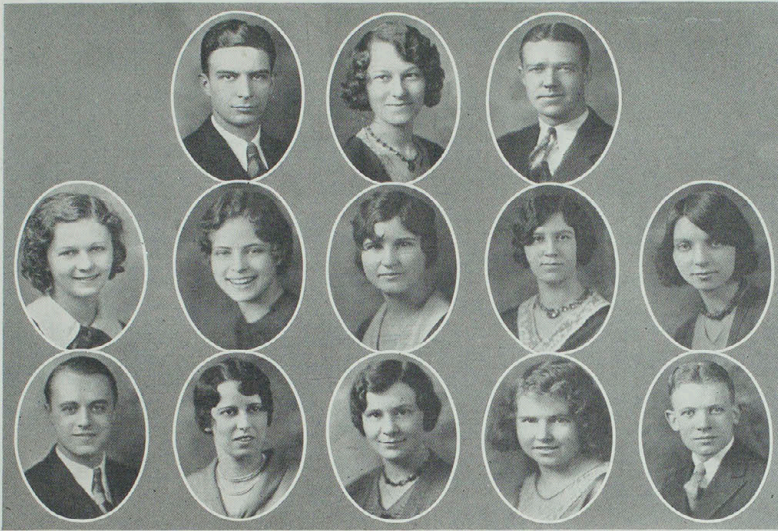


# BOOK THREE

## ACTIVITIES

It remained for Rome to supply the practical organization of the Greek theory; hence the purpose of Roman education became citizenship, law and order, in which the individual was again being swallowed up in the group leaving —





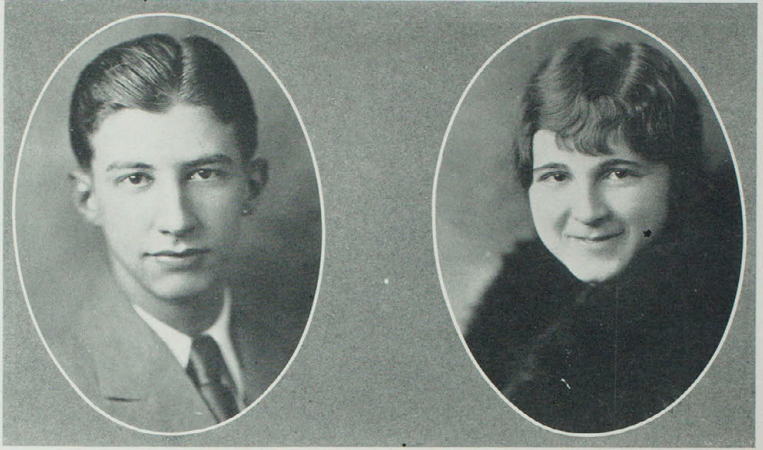
Robert Jones, Zella Brown, Charles Johnston.  
 Mamie Buchanan, Elinor Fair, Margaret Bragg, Dorothy Benjamin, Martha Berry.  
 Richard Ragsdale, Ruby Lea Robinson, Dorothy Jones, Mildred McGoldrick, Robert  
 Donaldson.  
 Other Members: Addie Belle Couch, Mrs. L. Burges, Frank Vail, Martin King.

## Index Staff

ROBERT N. JONES, Editor, Fall Quarter  
 FRANK VAIL, Editor, Winter Quarter  
 MARTIN KING, Editor, Spring Quarter.  
 LELAND VANLANINGHAM, Bus. Mgr., Fall Quarter  
 RUBY LEA ROBINSON, Bus. Mgr., Winter and Fall Quarters  
 DOROTHY BENJAMIN, Bus. Mgr., Spring Quarter

THE Index has just passed the twenty-first year as a successful paper. It is a laboratory project of the Journalism Class, and the material used in it serves as subject matter for this senior college class in composition. During the last three years it has been entirely a student project, under the supervision of the Student Council, which appoints a student Editor, who in turn, is responsible to the Student Council for the conduct of the paper.

The Editor chooses his staff from the class in Journalism, and the teacher of that class serves as faculty advisor to the paper. During the past year the paper has been very successful from a financial standpoint, because it has not only paid for itself in advertising, but put money in a growing fund.



JOHN BEN JONES, Editor-in-Chief

MARY BEAUCHAMP, Business Manager

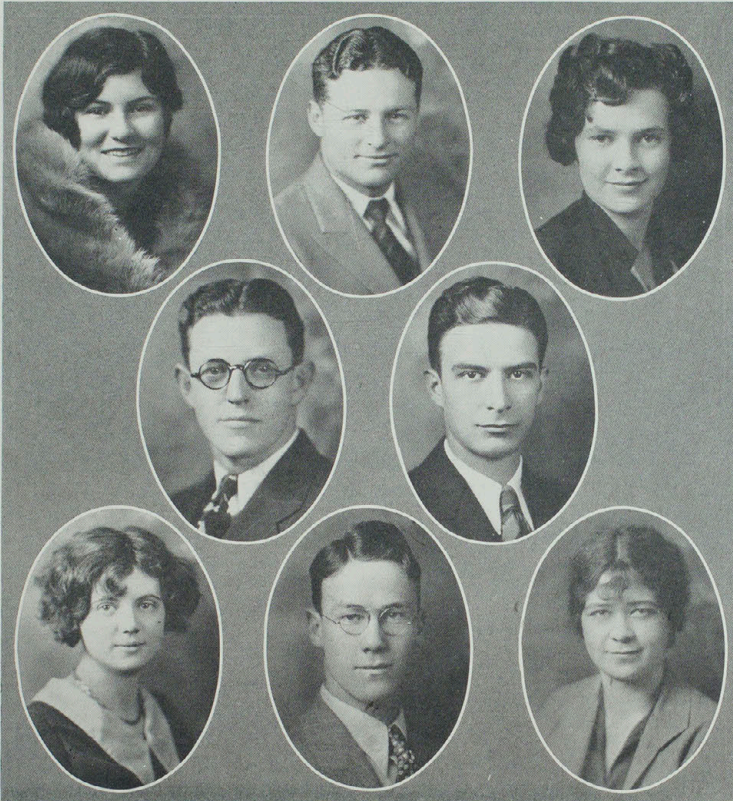
## Echo Staff

KNOWING that this volume of the history of the Northeast Missouri State Teachers College is by no means complete in its attempt to record all things which we should like for it to, we sincerely hope that it represents this school year to a degree that we feel will compensate us for our earnest endeavors.

In concluding we wish to thank Miss Ethel Hook, Mr. Ben W. Leib, The Burger-Baird Engraving Co., The Alexander Studio, and The Journal Printing Co., for their co-operation and services rendered in the making of this book.

Sincerely,

JOHN BEN JONES, Editor.



BERNICE SNEED

MORRIS HAMMOND

ANNA AVIS AUSTIN

FRANK FICKE

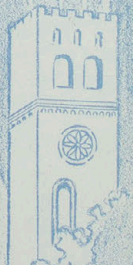
ROBERT N. JONES

HELEN GARTH

DALE ATTEBERY

JANE SWAIN

Other Members: HAROLD MITCHELL, ANNA MARGARET LINK





PAUL BISSELL

CARL TURNER

MARY BEAUCHAMP

## Dramatic Club

PAUL BISSELL, President

CARL TURNER, Vice-President

MARY BEAUCHAMP, Sec. and Treas.

MISS HELEN LANGWORTHY, Sponsor

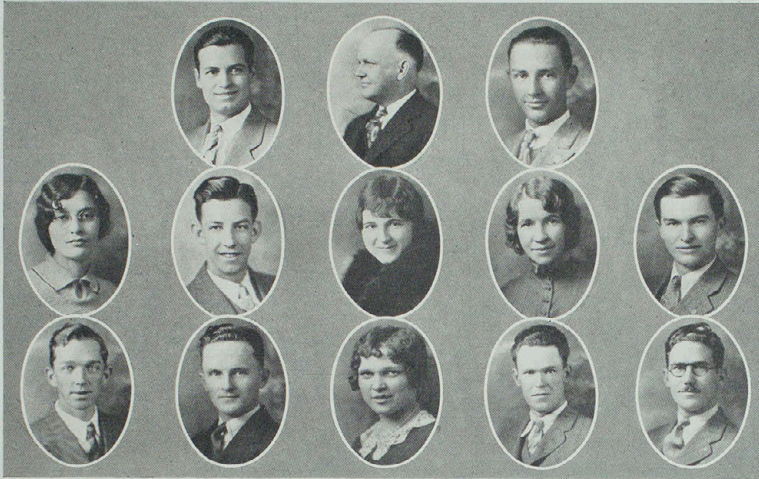
THE Dramatic Club, which was first organized in 1911 was re-organized this year under the direction of Miss Helen Langworthy. Meetings are held once every two weeks at which time a one-act play is presented. Many of these plays are directed by major speech students. This gives them experience otherwise not available.

### MEMBERS

Raymond Baker  
Martha Elizabeth Bealmer  
Mary Beatty  
Mary Beauchamp  
Dorothy Benjamin  
Paul Bissell  
Lucille Bondurant  
Fred Bourn  
Marjorie Cameron  
Virginia Courtney  
Dorothy Drum  
Beulah Ethal  
Helen Garth  
Elsie Gerster  
Ruth Greear  
Cleopatra Gregory  
Frances Henderson

Margaret Holman  
Ruth Jarman  
Maxine Jaynes  
Bess Jordan  
Thelma Lock  
Flora MacLean  
Grayce Elizabeth Miller  
Lucille Minter  
Anna Merle McCampbell  
Priest McFarland  
Florence McGoldrick  
Helen Moore  
Ernest Ringland  
Verel Rollins  
Wayne Selway  
Clare Sloop  
Marybelle Spencer

Nina Starbuck  
Jane Swain  
Mike Waddill  
John Hamilton  
Edward Lakin  
Joseph Love  
Fred Schwenge  
Carl Turner  
Adelaide Cauby  
Icel Lowe  
Mildred Ketchum  
Justin Clinkenbeard  
Pauline Nun  
Mrs. G. V. Burroughs  
Miss Edith Dabney  
Miss Lloria MaGee  
Mr. Eugene Hess



Myron Waddill, Mr. Eugene Hess, Edward Lakin.  
 Icel Lowe, W. E. Ross, Mary Beauchamp, Bess Jordan, John Hamilton.  
 Joseph Love, C. H. Wood, Margaret Holman, Clell Ledford, Carl Turner.  
 Other Members: Edwin Robinson, Paul Weaver, Violet Raplee, Wilma Burch.

## Speech Club

MYRON WADDILL, President

EDWARD LAKIN, Secretary and Treasurer

MR. EUGENE E. HESS, Sponsor

THE Speech Club has been very active this year. They have held regular meetings every Monday night, and have had some very interesting programs. Their programs are alternated between readings and open forum debate, discussing namely the topics of universal interest. They have given many public programs, including several at high schools in this section of the state, promoting the interest and participation in reading, speaking, and debate.



Dorothy McClure, Anna Avis Austin, Nina Starbuck, Ruby Lea Robinson.  
Lucille Bondurant, Lucille Minter, Mary Beauchamp, Virginia Courtney.  
Helen Garth, Anna Merle McCampbell, Anne Dorothy Fleming, Anna Margaret Link,  
Maurine Balance, Elinor Fair, Mary Frances Karle.  
Dorothy Propst, Florice Siegle, Zelpha Barnett, Martha Cooper.  
Other Members: Trevia Samuels Simpson, Marjorie Harmon.

## Howlers

FLORICE SIEGLE, President

MARTHA COOPER, Vice-President

DOROTHY PROPST, Treasurer

VIRGINIA COURTNEY, Secretary

MRS. TRIVIA SIMPSON, Sponsor

THE Howlers were organized in the fall of 1928 for the purpose of developing greater school spirit and an enthusiastic support of athletics. The membership of the organization is limited to twenty-one girls.



Elizabeth Lillard, Mr. J. W. Heyd, Dorothy Browning, Jane Swain.  
 Bessie Kapfer, Elizabeth Moseley, Elsie Gerster, Marion Johnson, Clarissa Childers.  
 Ernest Israel, Emma Cary, Stella Worthington, Alta May Gilliland.  
 Other Members: Addie Belle Couch, Jenelle Hall, Rozelle Vickrey, Mildred McGoldrick.

## Philomathean Society

DOROTHY BROWNING, President  
 JANE SWAIN, Vice-President  
 ELIZABETH LILLARD, Secretary

CLARISSA CHILDERS, Treasurer  
 ADDIE BELLE COUCH, Reporter  
 MISS NAN E. WADE, Sponsor

THE Philomathian Society, formerly the Language and Literature Club, is an organization of students who are either majoring in the language and literature department or who are interested in that department. It is the purpose of the society to give the members an appreciation of literature, to inculcate a love of the aesthetic, and to forward ideas which may be put into practice in the future.

Meetings are held every two weeks, at which time literary programs or social evenings are enjoyed.



Ruth Schofield, Agnes Handlon, Winerva Hays, Elizabeth Chappell.  
Wilma Cooley, Mattie Mae Bowers, Bertha Clemm.  
Icel Lowe, Katherine Green, Ethel Perry, Pearl Norvell.

## Ellen H. Richards Club

ELIZABETH CHAPPELL, President  
AGNES HANDLON, Sec. and Treas.      MISS LLORA MAGEE, Sponsor

THE Ellen H. Richards Club is an organization of girls interested in Home Economics, endeavoring to promote and establish every home in this vicinity into an economically sound, mechanically convenient, and physically healthful institution.



Pvt. Keller, Rex Wiseman, Howard Dutton, Leland Martin, Richard McMurry, Ernest Ringland, Marvin Walker, Charles Walker, Clarence Murphy, Joseph Creek, Chester Swank, Floyd Cokerham, Carne Cooley, Howard McCully, Loyd Clark, Sgt. Vail, James Keethler, John Morgan, Ralph Evans, Lewis May, Warren Nash, Lt. Rieger.  
Sgt. Moorman, David Von Eschen, Corp. Vaul, Carlyle Garnett, Mayhue Blaine, Carmie Casady, Fred Schwengels, Ray Keethler, Priest McFarland, Claude Hills, Corp. Cole, Lt. Simpson.  
Capt. Rieger, 1st Sgt. Hayden, Sgt. Bissell, Sgt. Wheeler, Sgt. Delezene, Myers Eggert, Ivan Runyan, Frank Vail, Sgt. Mulford, Corp. Bartlett, Corp. Craig, Corp. Gaffner, Corp. Mason, Mark McClure, Wayne Leslie, Kenneth Schmidt, Floyd McCollum, Earl Shockey, Bennett Mabry, Corp. Rickett.

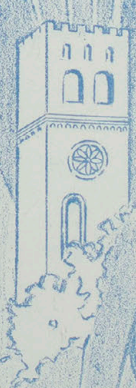
## Company "K"

COMPANY "K", of the 138th Infantry, was mustered into service as Company "C", of the famous "Fourth Missouri" infantry, about the beginning of the century. In the sixteen years following its organization, it was several times called into active service for police duty, by the Governor of the State of Missouri.

The company was called to the Mexican border in 1916, and remained there for eight months. The next year it was called into Federal service, and was trained for overseas duty.

It became a member of the 138th Infantry, which was composed of national guardsmen from Kansas and Missouri. The company was in Europe for eighteen months before the armistice was signed. On the border and in France the company distinguished itself.

For two years, there was no company. It was reorganized in 1922 as Company "C", of the 183th. The next year it was changed to Company "K," of the same infantry. In 1925 the company became almost entirely composed of Teachers College men, and so it has remained.



## School of Nursing

THE School of Nursing was organized in 1923. It is affiliated with the Grim-Smith Hospital and Clinic, and is accredited by the Missouri State Board of Nurse Examiners.

It offers unusual advantage in that thirty semester hours of college credit are earned by the student nurse during her three years in the School of Nursing, and this credit may be applied toward an educational degree.

Entrance requirements include, graduation from an accredited high school with evidence of standing in the upper third of the class; a physical examination by a member of the staff; and a personal interview with the Superintendent of Nurses.

The practical and clinical experience is obtained at the Grim-Smith Hospital, and through affiliation with the Washington University School of Nursing, eight months of the senior year are spent in St. Louis at Barnes Hospital, St. Louis Children's Hospital, and St. Louis Maternity Hospital. During this time special instruction and experience is received in Obstetrics, Pediatrics and Medicine.

The students in the School of Nursing reside at the Nurses' Home separate from the Hospital, where attractive comfortable surroundings tend to promote good health and contentment.

There are forty graduates of the School of Nursing who have been given the diploma of "Graduate Nurse." These graduates have passed, with superior grades, the examination conducted by the Missouri State Board of Nurse Examiners which entitles them to be known as "Registered Nurse."



Yvonne Wood, Alma K. Zoller, Grace Minear.  
Naomi Quigley Edwards, Dorothy Reese, Ethel Brickey, Velma Baker.  
Edna Newton, Doris Karle, Helen Randall, Marie Wilhite.  
Opal Evans, Charlotte Burkhalter, Leila Hurliman, Eva Wood Bolton.  
Ruth Vaughn, Freda Steele Hitch, Frances Crow, Sylvia Garrison.  
Other Members: Helen Dinsmore, Ferne Garrett, Gladys McNalley, Hallie Ward, Jeanette  
Gregory Wilcutt, Mary Alexander, Adelaide Gerry.



DR. C. H. McCLURE

LOLA COX

DOROTHY INBODY

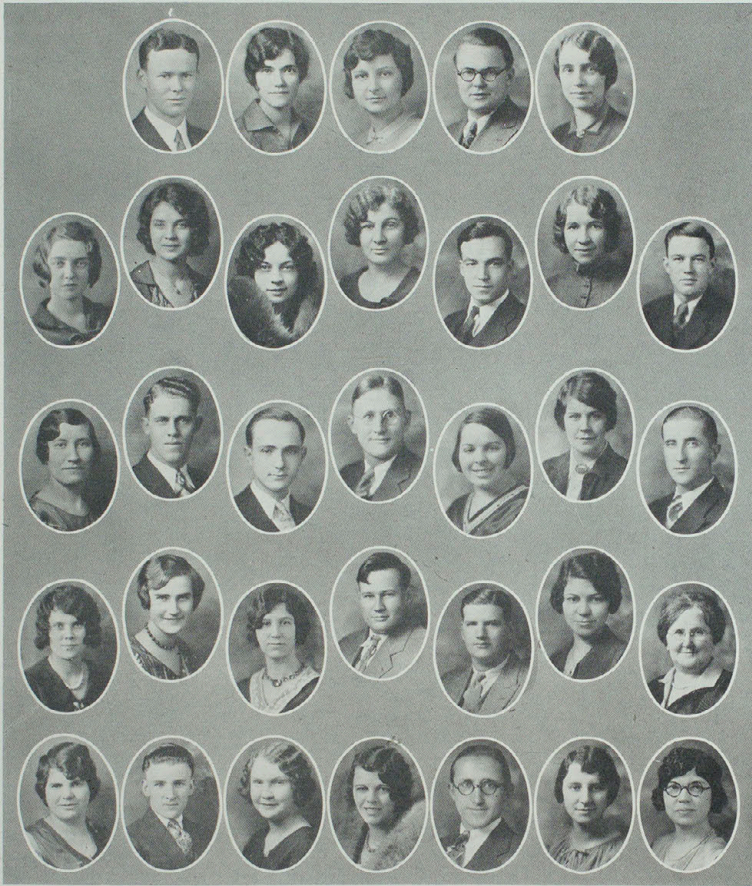
## Historical Society

LOLA COX, President

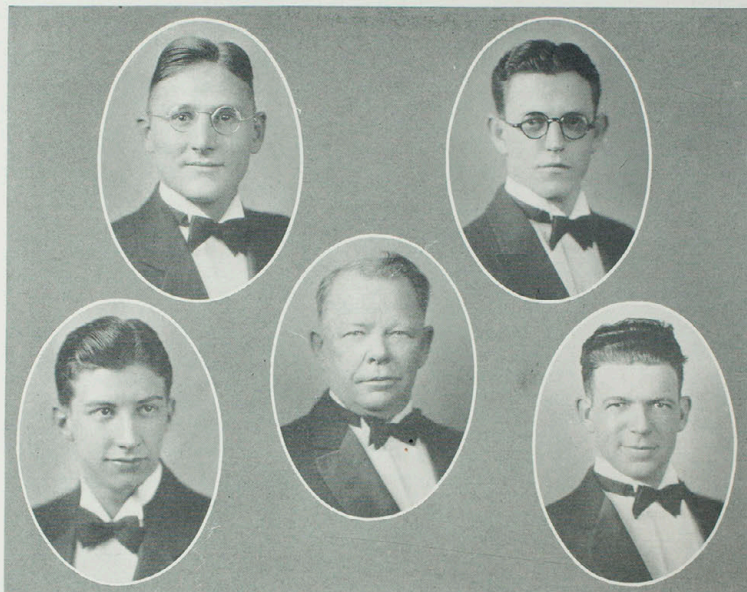
DOROTHY INBODY, Secretary and Treasurer

DR. C. H. McCLURE, Sponsor

THE Historical Society is a group of students and faculty members organized to promote interest in the field of Social Science, affiliated with the International Relations Clubs of America. It is the oldest organization on the campus, having been organized in 1912.



Byron Cosby, Jr., Caroline Dunnington, Ruth Robinson, Robert Fair, Virginia Golden.  
 Dorothy McClure, Jesse Fair, Viola Gelbach, Mrs. Nettie Gresham, Herbert Hartford,  
 Bess Jordan, Wendell Sears.  
 Mrs. Nellie Thurman, Alva Crow, Clifford Hoag, Fred Schwengels, Rosa Barnes, Ruth  
 Hostler, Lewis Teter.  
 Grayce Miller, Lucille Hutchinson, Dorothy Benjamin, Ulysses Gramsch, Leland Van-  
 laningham, Frances Henderson, Niota Hounsom.  
 Mary Anderson, Cloy Whitney, Zelpha Barnett, Mildred Buchanan, Paul Chadwell,  
 Dorothy Powell, Cordia Maddox.  
 Other Members: Claude Merideth, Dorothy Inbody, Mrs. Tennie Selby Burk, Beulah  
 Ethal, Margaret Torreyson, Pauline Howerton, Carrie Downing, Mrs. Fraser,  
 Forrest Green, William Reid, Mary Ann Gilbert, Margaret Rungee, Violet Raplee,  
 Lola Cox, C. H. McClure, G. V. Burroughs, Lucy Simmons, Clara Clevenger, Cath-  
 eryn Hudson.



FRED SCHWENGELS  
JOHN BEN JONES

DR. C. H. McCLURE

FRANK FICKE  
FOREST NEALE

## Interfraternity Council

DR. C. H. McCLURE, Chairman

FRANK FICKE, Sigma Tau Gamma Representative

FRED SCHWENGELS, Phi Sigma Epsilon Representative

JOHN BEN JONES, Sigma Tau Gamma Representative

FOREST NEALE, Phi Sigma Epsilon Representative

THE Interfraternity Council, composed of representatives from each fraternity on the campus, is an organization to promote co-operation between the fraternities, and prevent the violation of rushing rules.



Manie Wise, Ruth Greear, Ruth Robinson, Caroline Dunnington,  
Elizabeth Chappell, Lucille Hutchinson, Mrs. S. H. Ellison, Isabelle Rich, Mary  
Frances Karle,  
Mary Beauchamp, Dorothy McClure, Anna Merle McCampbell, Helen Garth.

## Panhellenic Council

RUTH GREEAR, President

CAROLINE DUNNINGTON, Vice-President

RUTH ROBINSON, Recording Secretary

MANIE WISE, Treasurer

MRS. S. H. ELLISON, Sponsor

THE Panhellenic Council is affiliated with the association of Educational Sororities, and is composed of three representatives from each sorority on the campus. Its functions are to prevent friction among these organizations, and to foster a spirit of good-will among sorority girls.



Ruth Greear, Miss Burrow, Lorraine Gates, Maurine Ballance.  
Elizabeth Lillard, Lucille Minter, Jeannette Wright, Ruth Robinson.

## Women's Athletic Association

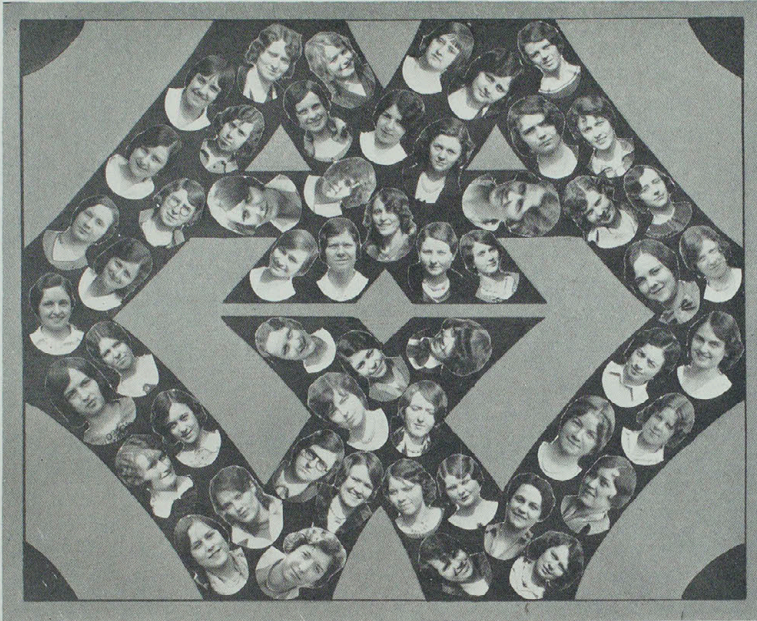
RUTH GREEAR, President  
MAURINE BALLANCE, Vice-President  
LUCILLE MINTER, Recording Secretary  
RUTH ROBINSON, Corresponding Secretary

JEANNETTE WRIGHT, Treasurer  
ELIZABETH LILLARD, Press Agent  
LORRAINE GATES, Pianist  
MISS BURROW, Sponsor

**T**HE Women's Athletic Association during this year has met monthly and enjoyed well planned meetings. One of the meetings consisted of the unique plan of finding a treasure on the campus. Two trails were marked to the treasure, one by red all-day suckers and the other by green ones, and a contest was held to find it. Other meetings consisted of dance programs, guessing contests and similar activities.

A great deal has been accomplished in the revising of the constitution and the addition of new features for the winning of the one thousand point sweater which is now a real symbol of achievement.

New members are taken in at the beginning of each quarter, and we take this opportunity to welcome any college woman to become a member.



Mildred Carpenter, Alberta Newton, Dorothy Jones, Ethel Dorr, Ruth Robinson, Winoka Litton, Sammie Wheatcraft, Lucille Minter, Virginia Courtney, Marie Wheatcraft, Lucille Bondurant, Frances Shrader, Marie Behymer, Frankie West, Miss Burrow, Lorraine Gates, Elba Paris, Opal McEwen, Maimee Buchanan, Florice Siegel, Maurine Ballance, Evelyn Stickler, Myrtle McDuffie, Mildred Buchanan, Icel Lowe, Alouise Stamm, Lenna McEwen, Ariel Leach, Ethel Cassity, Nadine Carpenter, Viola Gelbach, Edith Franklin, Elizabeth Lillard, Helen Day, Nina Starbuck, Dorothy Brinkley, Mary Anderson, Lavina Taylor, Mildred Morelock, Vera Reagan, Gertrude Hume, Frances Henderson, Bernice Mercer, Marjorie Cameron, Ruth Greear, Jessie Brown, Grace Kimbrough, Hellen Smith, Ouida Miller, Juanita Lowe, Berriam Brooker, Christena McWilliams, Violet Raplee.

Other Members: Barbara Rawlings, Ethel Perry, Gael McCampbell, Ruth Park, Vivian Graham, Juanita Jacobs, Anne Dorothy Fleming, Mary Belle Boyer, Agnes Wai-  
bel, Nadine Pitmann, Lois Young, Marian Pickell.



PI KAPPA SIGMA

*Championship Volley Ball Team  
Winner of Trophy Cup, Fall Quarter 1929*

Viola Gelbach, Ruth Greear, Captain, Verel Rollins, Norma Herndon  
Grace Kimbrough, Evelyn Foster, Frances Shrader

The Pi Kappas won the championship of the round-robin volleyball tournament with the record of seven victories and no defeats.



INDEPENDENT III

*Winner of Second Place  
Volleyball Tournament, Fall Quarter 1929*

Ouida Miller, Myrtle McDuffie, Juanita Lowe, Veronica Reagan, Evelyn Stickler, Jessie Brown, Winoka Litton, Captain, Merriam Brooker, Violet Raplee.



INDEPENDENT I

*Winner of Third Place  
Volleyball Tournament, Fall Quarter, 1929*

Marie Wheatcraft, Ruth Park, Ethel Cassity, Captain, Sammie Wheatcraft, Lorraine Gates, Jeannette Wright, Edith Franklin, Joyce Holmes.

The Independent III team won second place by having a larger total score for all games played than the Independent I team. Both teams won four games and lost two games.



ALPHA SIGMA ALPHA

*Championship Basketball Team*

*Winner of Trophy Cup, Winter Quarter 1930*

The Alpha Sigmas did not lose a single game in the winning of the Consolation Elimination Basketball Tournament played during the Winter Quarter. They are to be commended for their good playing and unceasing efforts.



KINUNKA CAMPFIRE

*Runner-up in the Basketball Tournament  
Winter Quarter 1930*

Ethel Dorr, Alouise Stamm, Frankie West,  
Captain, Mary Anderson, Alberta  
Newton, Lucille Minter.

All through the tournament the Kinunkas were admitted and congratulated for their ease in playing and for their lack of fouls. They lost only one game and that was the final one which was won by the Alpha Sigmas.



ALL-STAR BASKETBALL TEAM

*Winter Quarter 1930*

Maurine Ballance, Tri Sigma; Ruth Kapfer, Independent II; Juanita Lowe, Independent I; Frankie West, Kinunka Campfire; Grace Kimbrough, Pi Kappa; Nadine Carpenter, Alpha Sigma; Justin Clinkenbeard, Delta Sigma.

Each team entered in the tournament elected its best player to be on the All-Star Team. This team in name only is the W. A. A. Varsity.



## Warrensburg Play Day

OCTOBER 18 TO 20

**N**O, this picture was not taken on this campus. This is the Administration Building at the Warrensburg State Teachers College, and this group represents students and teachers from the five State Teachers Colleges who attended the first Teachers College Play Day in Missouri.

The following girls with Miss Burrow and Miss Grassle went from N. E. M. S. T. C. in the college bus: Ruth Robinson, Winoka Litton, Maxine Jaynes, Margaret Florea, Ruth Greear, Mildred Buchanan, Dorothy Easley, Ruth Park, Mildred Morelock, Lucille Bondurant, Mary Belle Boyer, Ethel Dorr, Nina Starbuck, and Ethel Cassity. These girls were not chosen for any particular athletic ability but were the first to sign up for the trip. Twenty-five girls and the three women physical education teachers came from Springfield, seven girls and one teacher from Maryville, and nine girls and one teacher from Cape Girardeau. About forty girls at Warrensburg took part in the activities.

The program started Friday night with the night football game between Warrensburg and William Jewell. This was a new experience for most of the girls.

Saturday was the big day. Activities started off with a parade of all the schools. Then everyone joined in some folk dances in the big gymnasium. Students were then divided into four color teams, the colors being purple, red, green, and yellow. A color team did not represent a college but was a cosmopolitan group having students from each college in it. From ten in the morning until noon, there was choice of tennis, soccer, and basketball. All three sports went on at the same time, each girl choosing what she would like to play. In the afternoon from two to four o'clock there was choice of volley ball and field hockey. From five until six o'clock everyone played hit pin baseball.

Saturday evening at seven, the school cafeteria was the scene of a very cleverly arranged banquet. Dr. Hendricks, President of The Warrensburg Teachers College, the Dean and the Coach extended their welcome to all the guests. After group songs, rounds and yells each group sang its own school song. At the end of the banquet it was announced that the purple team had won the highest number of points for the day. Nina Starbuck, Mildred Morelock, and Ethel Dorr of this school were members of the purple team.

Sunday morning breakfast was served in the Y. W. C. A. rooms and then came farewell. What a wonderful Play Day it had been.



MÄMMY  
Virginia Butler



JOCKEY  
Lorraine Gates



A BIT OF RUSSIA  
Ferne Wolfe



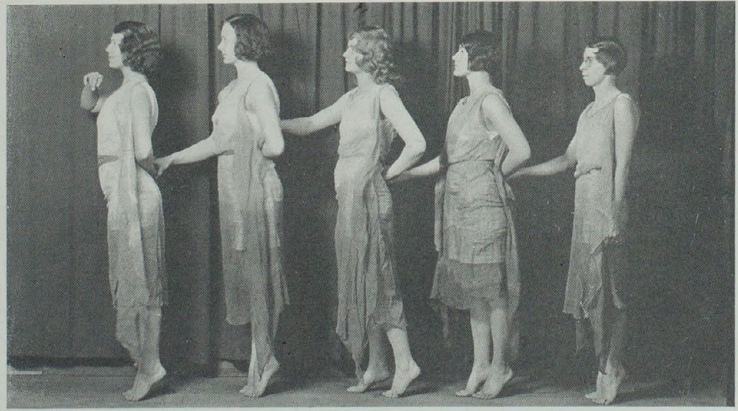
ON DECK  
Anne Dorothy Fleming



SWANEE  
Lorraine Gates, Mildred Howland  
Winifred Unger

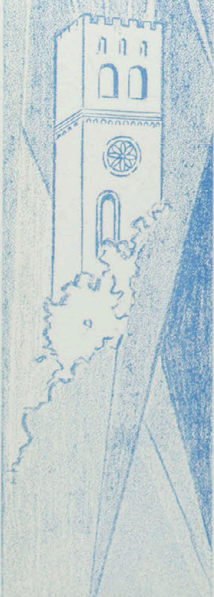


Anna Merle McCampbell  
Maurine Ballance



WALTZ FOR FIVE  
Nina Starbuck, Dorothy Jones, Virginia Courtney, Dorothy Rollins, Ethel Dorr  
Program given for the Kirksville Branch of A. A. U. W., February 13, 1930.

1930  
ECHO





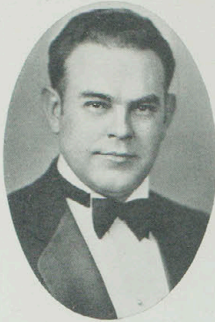
## BOOK FOUR ORGANIZATIONS

To early Christianity the task of rescuing the individual from the fixed order and to establish the hope that life is spirit, soul and emotion. The religious aim of this education was not only to conform but to create "more abundant life." This too was destined to be absorbed into an organization which culminated in—





## Fraternities



MR. R. E. VALENTINE



FRANK FICKE

## Sigma Tau Gamma

FRANK FICKE, President  
CHARLES JOHNSTON, Vice-President  
BYRON COSBY, JR., Secretary

JOHN BEN JONES, Treasurer  
BASIL KELLEY, Sergeant-at-Arms  
MR. R. E. VALENTINE, SPONSOR

**S**IGMA TAU GAMMA is the oldest social Teachers College Fraternity in existence, being founded at Warrensburg June 28, 1920. Beta Chapter was installed at Kirksville in 1921 as the second of the now fifteen existing chapters.

Beta Chapter existed until 1921 as Phi Lambda Epsilon Fraternity.

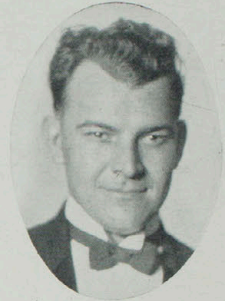




John Birney, James Daugherty, Wendell Sears, John Ben Jones.  
 Alfred Hutchinson, Morris Hammond, Rollin Becker, Dale Attebery, Byron Cosby, Jr.,  
 Kenneth Mock.  
 K. E. Steele, Noel Ellis, Joseph Love, Hazen Anderson, Harold Mitchell, Wyman Henry.  
 James Ator, W. E. Ross, Clifford Hoag, Charles Johnston, Clayton Bigsby.  
 Richard Ragsdale, James Turner, Raymond Baker, Neal Garrison, Richard Moorman,  
 Daniel Tetlow.  
 Earl Hatcher, Wirt Downing, Herbert Hartford, Robert Donaldson, William Unash,  
 Glenn Burnett.  
 Charles Murrell, Jr., Clarence Lowe, Roy Loudermilk, Adelbert Troester, Basil Kelley,  
 Walter Steenbock.



FRED SCHWENGELS



WRAY RIEGER

## Phi Sigma Epsilon

FRED SCHWENGELS, President

TRUSTEN McARTOR, Vice-President

EUGENE BARTLETT, Secretary

FOREST NEALE, Treasurer

CLARENCE PACK, Sergeant-at-Arms

PHI SIGMA EPSILON, a national Teachers College social fraternity, was organized at Kansas City, Mo., December 1927.

This Chapter was first organized in the summer of 1925 as a local fraternity under the name of Sigma Delta Tau, and in 1927 it became affiliated with Phi Sigma Epsilon as Gamma Chapter, which is one of the now four active chapters.





Dr. C. R. Green, Forest Neale, Carl Turner, John R. Kirk,  
 Elisha Hill, Russell Moore, Mayhue Blaine, Glen Shanholtzer, Carmie Casady, Finis  
 Crawford, James Judd,  
 Francis Funk, Leland Vanlaningham, William Paulfrey, Alva Crow, Lewis Teter, Ralph  
 Evans, Robert Everhart,  
 Trusten McArtor, Carl Bartlett, Clarence Pack, Eugene Bartlett, Leo Bragg, Chester Hill,  
 Ivan Runyan,  
 Berle Adams, Howard Mason, Glen Bolton, Clark Curry, Paul Snyder, William Reed,  
 Albert Sadler,  
 Samuel Curtright, Carl Wade, Cloy Whitney, Leland Martin, Dwight Curtis, Clarence  
 Hurst, Mark McClure,  
 Weeks Maupin, Arthur Houser, James Cottle, Frank Vail, Sonny Stringer, Ishmael Bunch,  
 James Gaffner.

1930  
ECHO





## Sororities



MANIE WISE



MISS LUCY SIMMONS

## Delta Sigma Epsilon

MANIE WISE, President

EDITH MCGLASHON, Vice-President

NINA STARBUCK, Corresponding Secretary

LUCILLE BONDURANT, Recording Secretary

LUCILLE HUTCHINSON, Treasurer

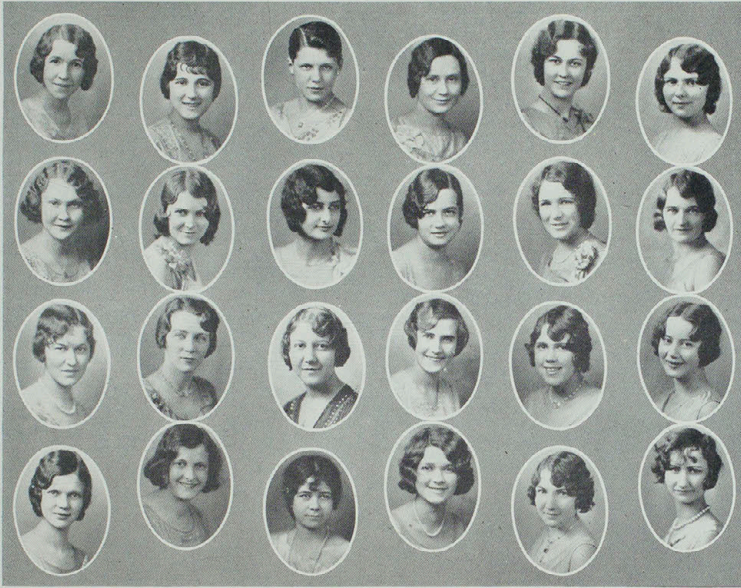
HELEN DIMMITT, Sergeant-at-Arms

BESS JORDAN, Historian

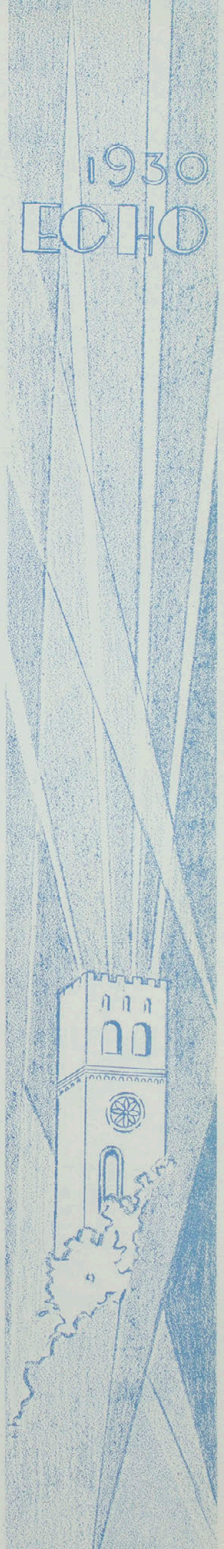
MARY BEAUCHAMP, Chaplain

MISS LUCY SIMMONS, Sponsor

**A**LPHA Chapter of Delta Sigma Epsilon was founded at Miami University, Oxford, Ohio, in 1914. There are now twenty-eight active chapters. Iota Chapter was established in Kirksville on January 28, 1921.

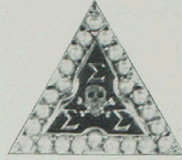


Bess Jordan, Mary Beauchamp, Louise McGee, Dorothy Jones, Edythe McGlashon, Nina Starbuck.  
 Zelpha Barnett, Marybelle Spencer, Dorothy Drum, Martha Cooper Barker, Mary Wilson, Ethel Forquer.  
 Helen Day, Evelyn Stickler, Helen Dimmitt, Lucille Hutchinson, Lucille Bondurant, Thelma Cross.  
 Lola Cox, Hazel Johnston, Jane Swain, Flora MacLean, Marie Wells, Geraldine Collop.  
 Other Members: Martha Elizabeth Bealmer, Justin Clinkenbeard, Mary Steeples, Irene Daily.





MISS VIOLA MAGEE



CAROLINE DUNNINGTON

## Sigma Sigma Sigma

CAROLINE DUNNINGTON, President

JEANNE AUSTIN WOOLF, Vice-President

ISABELLE RICH, Treasurer

HELEN GARTH, Recording Secretary

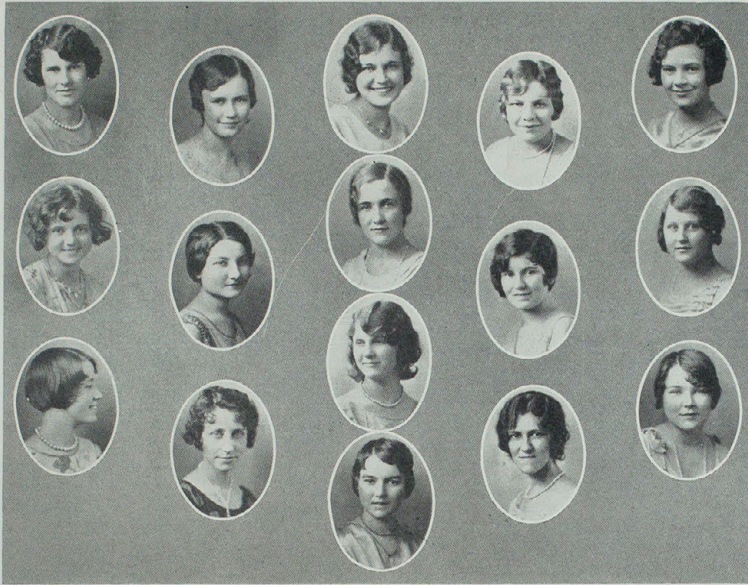
ANNA MARGARET LINK, Sergeant-at-Arms

MAURINE BALLANCE, Corresponding Secretary

MISS VIOLA MAGEE, Sponsor

**S**IGMA SIGMA SIGMA Sorority was founded at Virginia State Normal School, Farmville, Va., April 20, 1898. It is now exclusively an educational sorority having twenty-six active chapters.

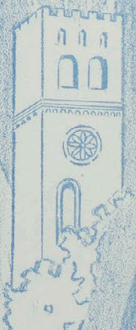
Mu Chapter was installed Nov. 20, 1915. The group previously existed on the campus as Sigma Delta Chi.



Mary Beatty, Jeanne Austin Woolf, Naomi Quigley Edwards, Carol Morgan, Anna Avis Austin.

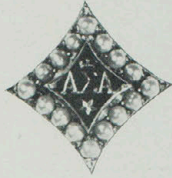
Helen Garth, Florice Siegle, Miriam Quinn, Bernice Sneed, Zelda Peterson.

Anna Margaret Link, Nellie Rogers, Maurine Ballance, Isabelle Rich, Anne Dorothy Fleming, Elsie Gerster.





RUTH ROBINSON



MISS ETHEL HOOK

## Alpha Sigma Alpha

RUTH ROBINSON, President  
DOROTHY PROPST, Vice-President  
BERNICE MAUPIN, Secretary

NADINE CARPENTER, Treasurer  
MILDRED CARPENTER, Graduate Secretary  
MISS ETHEL HOOK, Sponsor

ALPHA SIGMA ALPHA was founded November 15, 1901, at the Virginia State Normal School, and is now a National Teachers College Sorority, with twenty-four active chapters.

Alpha Beta Chapter was installed in 1914 at Kirksville, having been formerly organized as a local, Kappa Theta Psi.



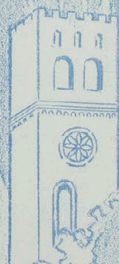
Anna Merle McCampbell, Bernice Mercer, Mildred Carpenter, Lorraine Gates, Frances Eggert.

Virginia Butler, Aerial Leach, Ethel Cassity, Edith Franklin, Mary Frances Karle, Katherine Wood.

Mary Emison, Elinor Fair, Jessie Cooper Fair, Sammie Wheatcraft, Mabel Norris.

Cleo Mercer, Nadine Carpenter, Dorothy Propst, Lora Murrell, Virginia Courtney, Bernice Maupin.

Other Members: Amelia Brown, Catherine Burk.





RUTH GREEAR



MISS BRACY CORNETT

## Πi Kappa Sigma

RUTH GREEAR, President  
NORMA HERNDON, Vice-President  
VIOLA GELBACH, Secretary

FRANCES HENDERSON, Treasurer  
DOROTHY McCLURE, Sergeants-at-Arms  
MISS BRACY CORNETT, Sponsor

ΠI KAPPA SIGMA was founded at Michigan State Teachers College, Ypsilanti, Michigan, on November 17, 1894. There are now twenty-eight active chapters.

Pi Chapter was installed in the Northeast Missouri State Teachers College July 26, 1924.



Novilla Haines, Marion Johnson, Winerva Hays, Ruby Lea Robinson, Frances Henderson.  
Verel Rollins, Margaret Runge, Christina McWilliams, Grace Kimbrough, Dorothy Mc-  
Clure, Dorothy Rollins.

Ruth Jarman, Norma Herndon, Etta Singley, Edith Schneider, Maurine Finegan.

Willie Whitson, Margaretta Spencer, Elizabeth Chappell, Viola Gelbach, Gertrude  
Hume, Evelyn Forrester.

Other Members: Helen Naughton, Jeannette Gregory Willcutt.



1930  
ECHO





## Professional Fraternities



Lewis Clevenger, Lucille Hutchinson, Isabelle Rich, Bracy Cornett, Byron Cosby, Jr., Dorothy McClure.

Mary Beauchamp, Martha Berry.

Vera Fawcett, Frances Henderson, Jeanne Woolf, Ben Humphrey, Caroline Dunnington. Wilma Cooley, Ruth Greear, Dr. C. H. McClure, Mildred Casler, Ralph Evans, Nella Mae Weber.

Other Members: Floella Carter, Beulah Ethal, Mrs. Birdie Fraser, Mr. W. J. Bray, L. A. Eubank.

## Kappa Delta Pi

ISABELLE RICH, President

BEN HUMPHREY, Vice-President

MARTHA BERRY, Recording Secretary

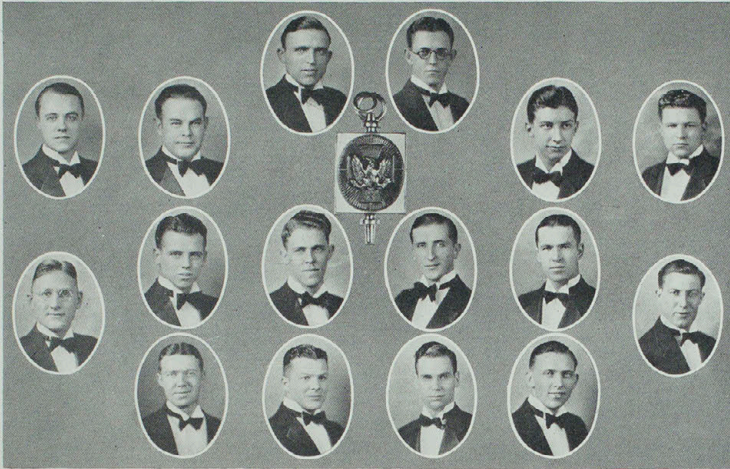
MARY BEAUCHAMP, Treasurer

LUCILLE HUTCHINSON, Reporter

MISS BRACY CORNETT, Sponsor

**K**APPA DELTA PI grew out of a local society, the Illinois Education Club founded at the University of Illinois in 1909, and later, June 8, 1911, it was incorporated under the laws of the State of Illinois as the honorary educational fraternity, Kappa Delta Pi.

Tau Chapter was installed at the Kirksville State Teachers College February 24, 1923. It is one of sixty-two active chapters.



Alfred Hutchinson, Frank Ficke.  
 Richard Ragsdale, R. E. Valentine, John Ben Jones, Basil Kelley.  
 Fred Schwengels, Earl Hatcher, Alva Crow, Lewis Teter, James Ator, Frank Vail.  
 Charles Johnston, Trusten McArtor, Ralph Evans, Eugene Bartlett.  
 Other Members: Robert Fair, Harold Protiva, Irving Rector, Claude Merideth, L. A. Eubank, Bert Lampson.

## Blue Key

FRANK FICKE, President  
 ALFRED HUTCHINSON, Vice-President  
 EUGENE BARTLETT, Secretary

JOHN BEN JONES, Treasurer  
 FRANK VAIL, Sergeant-at-Arms  
 MR. L. A. EUBANK, Sponsor

**B**LUE KEY, honor fraternity, was founded at the University of Florida in October 1924. Blue Key recognizes outstanding qualities in character, scholarship, student activities, leadership, and service.

The Kirksville State Teachers College Chapter was organized December 9, 1925, and installed April 5, 1926. It is one of the forty-seven active chapters.



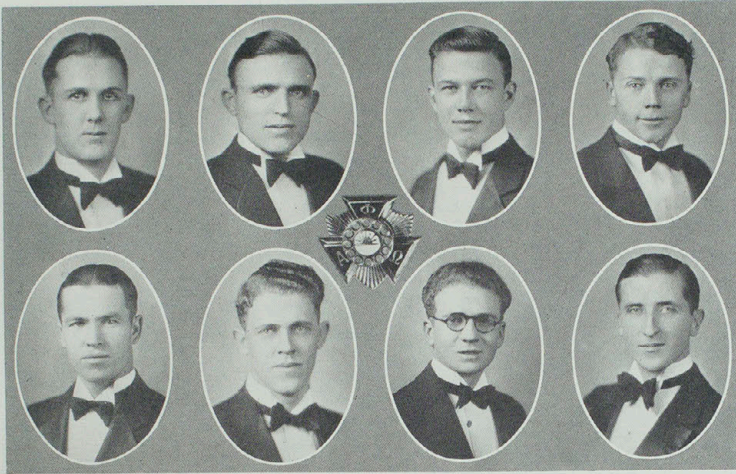
Evelyn Dodson, Elva Collipriest, P. O. Selby, Ruth Greear, Mary Frances Karle.  
Mildred Cassler, Nadine Carpenter, Frances Henderson, Hazel Johnston, Edith McGlashon, Anna Merle McCampbell.  
K. E. Steele, Martha Cooper, Alta May Gilliland, Dorothy Jones, Manie Wise, Armil-  
dridge Shunk.

### Πi Omega Πi

EVELYN DODSON, President  
ALTA GILLILAND, Vice-President  
RUTH GREEAR, Treasurer

FRANCES HENDERSON, Historian  
ELVA COLLIPRIEST, Reporter  
MR. P. O. SELBY, Sponsor

Πi OMEGA Πi is a national honorary fraternity in commercial education. Alpha Chapter of Pi Omega Pi was established at Kirksville, Missouri, on June 13, 1923. There are now fourteen other chapters.



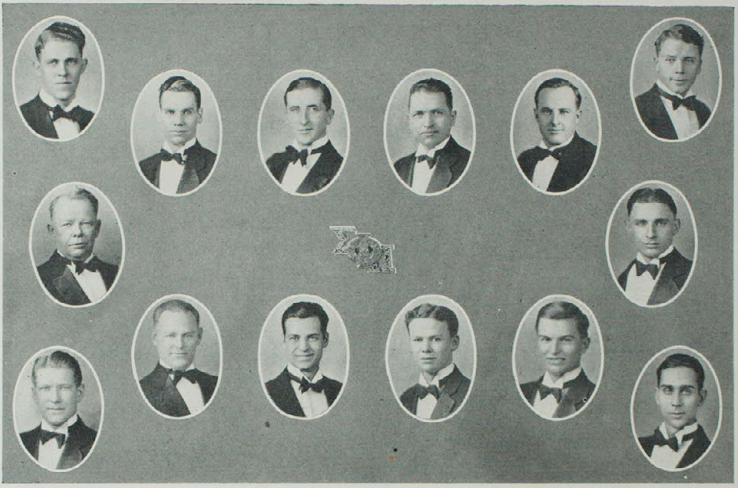
Berle Adams, Alfred Hutchinson, Wendell Sears, Glen Shanholtzer.  
James Ator, Alva Crow, Ernest Mason, Lewis Teter.

## Alpha Phi Omega

ALFRED HUTCHINSON, President  
BERLE ADAMS, Vice-President

LEWIS TETER, Secretary and Treasurer  
MR. W. J. BRAY, Sponsor

ALPHA PHI OMEGA, an honorary professional, educational and social service college fraternity, international in scope, was established at Lafayette College, Easton, Pennsylvania, December 16, 1925. Epsilon Chapter was installed November 22, 1927, as one of the thirteen active chapters.



Alva Crow, Ralph Evans, Lewis Teter, Ivan Runyan, James Judd, Glen Shanholtzer.  
 Dr. C. H. McClure, Ben Humphrey.  
 James Craig, Henry Harlan, Myron Waddill, Byron Cosby, Jr., John Hamilton, Walter  
 Evans.  
 Other Members: Claude Meredith, Eugene Fair, L. A. Eubank, Byron Cosby, P. O. Sel-  
 by, John Harty.

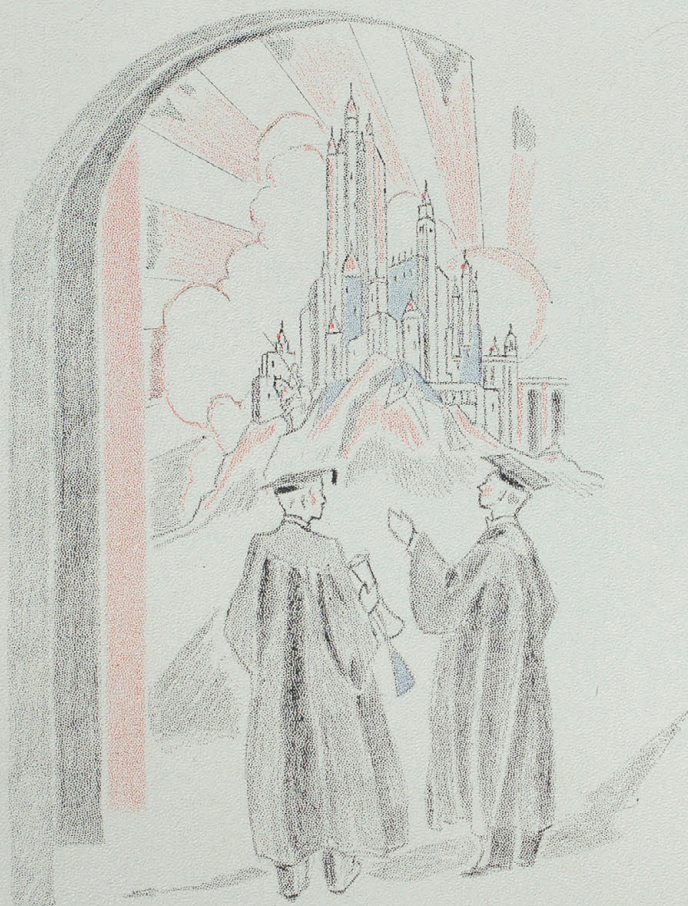
## Phi Sigma Pi

BEN HUMPHREY, President  
 IVAN RUNYAN, Vice-President

MYRON WADDILL, Sec. and Treas.  
 DR. C. H. McCLURE, Sponsor

PHI SIGMA PI is a national, honorary, professional fraternity for men engaged in or preparing for the teaching profession.

Alpha Chapter was organized in the Warrensburg State Teachers College, on February 14, 1916, being followed by Beta Chapter, which was installed in the Northeast Missouri State Teachers College April 30, 1929.

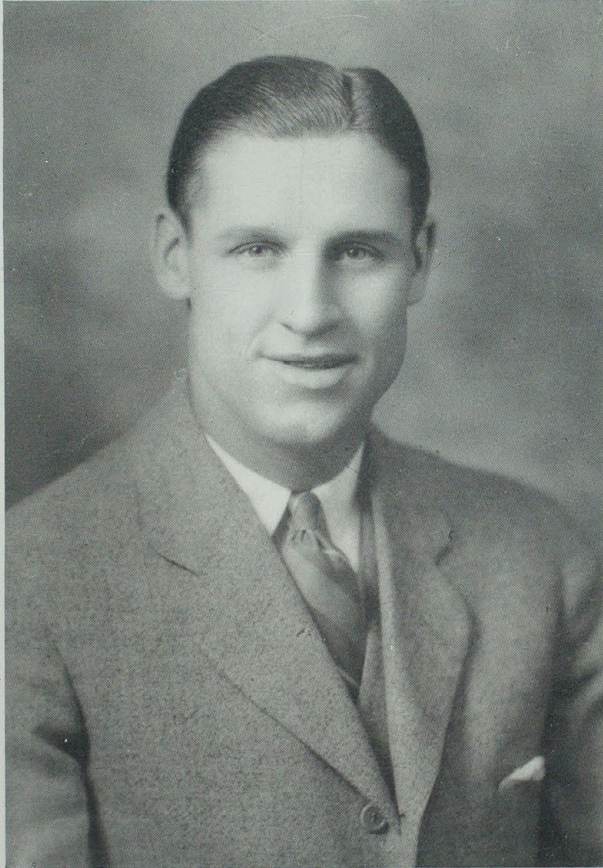


# BOOK FIVE

## ATHLETICS

The magnificent structure of Medievalism, whose chief educational contribution was the university, whose purpose in turn was the control of knowledge in the interest of existing conditions. The individual must again look to the future for deliverance, and this came in—

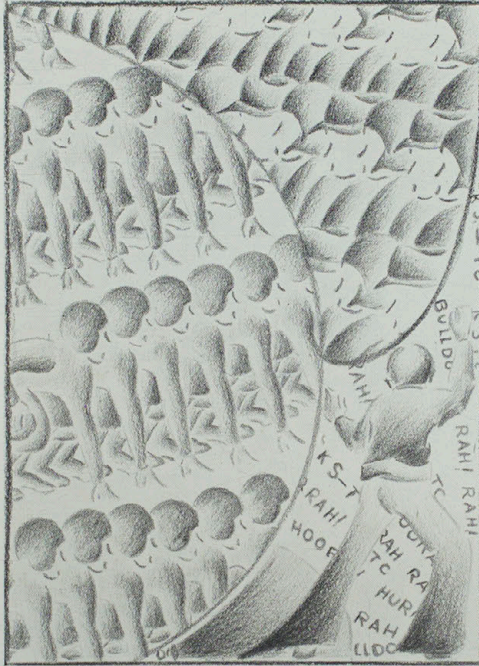




DON FAUROT, Coach



CHAUNCEY SIMPSON, Coach



# Football



HAROLD PROTIVA, *Captain*

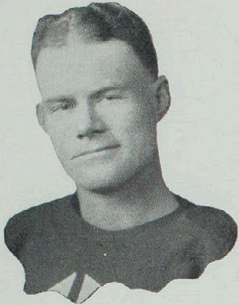
.....  
.....  
.....  
*M. I. A. A. Champions!*  
.....  
.....

## Kirksville Teachers 6 Chillicothe 0

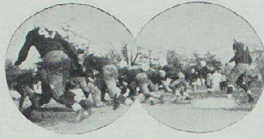
The Bulldogs' first opponents were the Chillicothe Business College Ducks whom they defeated at Chillicothe 6 to 0. Since the game was so early in the season Coach Fautot used his entire squad of twenty-six men, giving them all a chance to display their skill. Due to the warm weather the game was slow and both teams fumbled frequently. No scores were garnered in the first quarter, and the only touchdown of the game came when Turner flipped a pass to Henry which put the ball in scoring distance, where Hammond carried it over on the next play. This happened in the second quarter; after which Kirksville kept the ball in Chillicothe quarters most of the time.



THE 1929 BULLDOGS



WINSTON BALTZELL



GUS BEAVANS

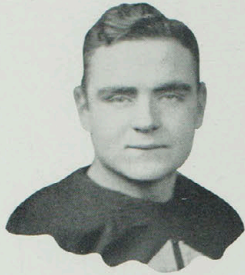
## Kirksville Teachers 12 Rolla Miners 13

Kirksville lost a hard fought game to Rolla October 4, when the Miners staged a wonderful comeback to win the muddy melee 13 to 12. For three quarters Kirksville outpassed, outplunged, and played a far better defensive game than did their rivals. With but four minutes of play remaining, the Miners suddenly snapped out of their lethargy, and fighting like demons they managed to tally two touchdowns on passes, and kick one goal to snatch victory right out of the Bulldogs' mouth. Early in the first quarter, Houser received a lateral pass and ran for the first home touchdown of the year. Try for point failed, as did the one after Hammond's touchdown in the second quarter. The third quarter saw both teams playing as they did the first half, the Bulldogs taking the part of the aggressor, while the Miners played a listless defensive game. Then came the fatal fourth period when the Miners brought forth their inspirational playing which brought defeat to the Bulldogs.

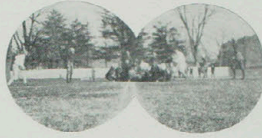


EARL HATCHER

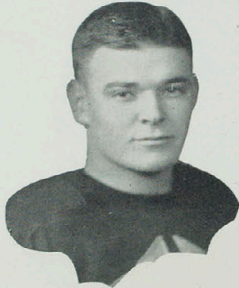




JAMES DAUGHERTY



JAMES CRAIG

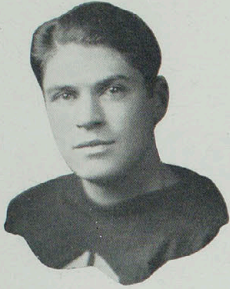


FRANK BIGSBY

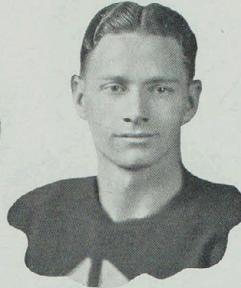
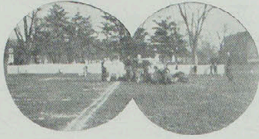
## Kirksville Teachers 0 Westminster 14

Outweighing and outplaying their opponents but unable to gain the breaks of the game the Bulldogs went down in defeat before the Bluejays at Westminster, October 12, 14 to 0. The Teachers College men fought hard, getting the ball down in scoring territory only to lose it on a fumble. Neither team scored in the first quarter, and in the second period, the Bluejays pulled off the best play of the game. The Bulldogs had carried the ball to the five yard line where they fumbled and Westminster got possession of the ball. They immediately uncorked a lateral pass which resulted in a touchdown. Once again the Bulldogs carried the ball deep into Westminster's territory, but the halftime gun robbed them of a touchdown as the ball was resting on the three yard line with three plunges left to take it over. No scores were tallied in the third quarter, but the final stanza saw the Bluejays score a touchdown and a safety. During the closing minutes the Bulldogs resorted to the passing game in a vain effort to tally.





SONNY STRINGER



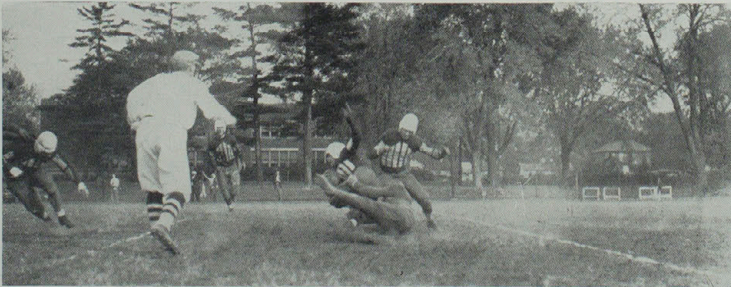
JOHN APPLEMAN

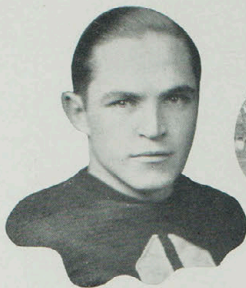
## Kirksville Teachers 14 Iowa Teachers 0

Passing, in critical moments, enabled the Bulldogs to win a hard earned game over the Iowa Teachers College here October 18, 14 to 0. Kirksville fought hard, and were never seriously threatened by their opponents. Neither team tallied until late in the second period when Protiva ran over the goal line after receiving a pass from Turner. Try for point was successful and the half ended 7 to 0 favoring the Bulldogs. A hard rain started falling in the third period, but failed to dampen the Bulldog spirit, as they completed two passes for a gain of thirty-six yards after which, Daugherty plunged the line for a touchdown. Houser kicked the goal, and no more threats were made by either team.

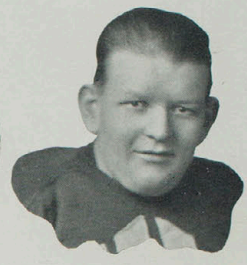


TRUSTEN McARTOR





ARTHUR HOUSER



ROSCOE GOSLIN



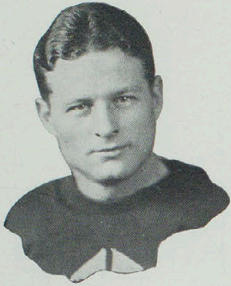
FRED SCHWENGELS

## Kirksville Teachers 38 Warrensburg 12

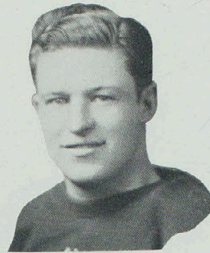
Playing before packed bleachers, the Bulldogs smothered the Warrensburg Mules 38 to 12 in the homecoming game here October 25. The heavier Kirksville team easily outplayed their opponents in every department of the game. The Kirksville eleven were so aggressive that they were never forced to punt during the first half. Kirksville scored early when they received the kickoff and tore through the Mule line as if it were paper, gaining a touchdown in less than two minutes. After a short scrimmage in midfield, they again took the ball over, this time Beavans scored the touchdown. Kirksville kicked to War-

rensburg and Henry fell on the ball, which was across the Mule line, for the third touchdown of the opening period. Warrensburg made their first touchdown of the game when they managed to make several long passes. Bigsby made another touchdown for Kirksville, and the half ended 25 to 6. Kirksville blocked a Mule punt in the third quarter, getting possession of the pigskin, and Hammond carrying it over for the fifth touchdown of the game for the Purple and White. Daugherty plunged over the line, making the final touchdown for Kirksville. The Mules scored their second marker by completing several passes against substitutes, of which Faurot had used many. The game ended just as Appleman was downed on the one foot line.





MORRIS HAMMOND



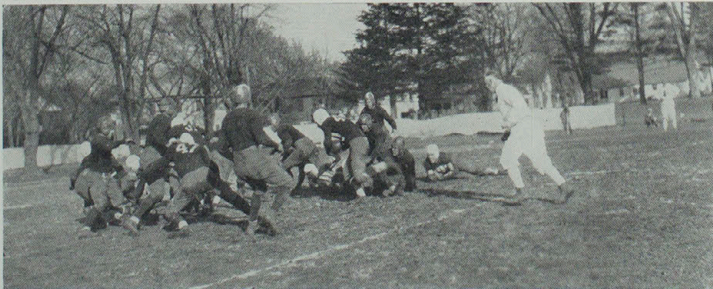
BASIL KELLEY

## Kirksville Teachers 0 Springfield 0

The Bulldogs were held to a 0 to 0 tie by the Springfield Bears, for the second time in two years, before a crowd of 2,500 homecomers at Springfield, November 1. Kirksville had the ball on Springfield's three yard line on five different occasions, but a determined Bear line prevented them from scoring. On the other hand, Springfield was never inside of the Bulldog twenty yard line, Kirksville resorted to an aerial game after their line plunges had failed to tally. It was in this department of the game that the Bulldogs completely overshadowed their opponents. They completed 13 passes out of 29 attempts for a gain of 208 yards, while Springfield made 1 good out of 7 efforts, for a gain of 15 yards. In scrimmage the Bulldogs totaled 145 yards to Springfield's 102. Kirksville also made 16 first downs to 7 for Springfield.



JAMES ATOR





JAMES TURNER



WYMAN HENRY

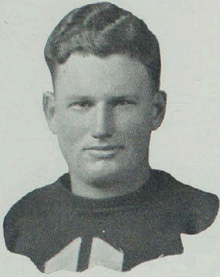


CLAYTON BIGSBY

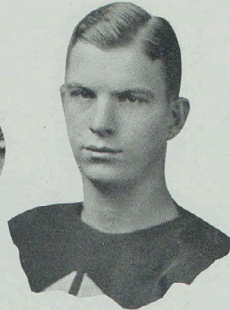
## Kirksville Teachers 31 Parsons College 0

Piling up the biggest marginal victory of the season, the Bulldogs defeated Parsons College here Armistice day 31 to 0. After an uneventful first quarter the Bulldogs got under way and opened up with passes and line plunges that completely smothered the Wildcats. House scored the first Bulldog touchdown when he went over soon after the second quarter started. After a series of line bucks, Wade plunged over tackle for another touchdown. No further scores were gleaned the first half. Faurot's four H's soon brought forth another counter in the third quarter after a number of line plunges. After this, Kirksville kicked off, and then was penalized 25 yards. Parsons completed two passes for 20 yards bringing them to the Bulldog 7 yard line. Here they lost the ball on downs, and then came the play of the game. The Bulldogs lined up for punt formation, but gave the ball to House who smashed through the center of the line and clicked off 50 yards before he was downed. However, no more scores were made in the third quarter. Wade made another touchdown in the fourth quarter, after which Faurot used a team composed entirely of freshmen. C. Bigsby ran through the entire Wildcat team for the final touchdown of the game.





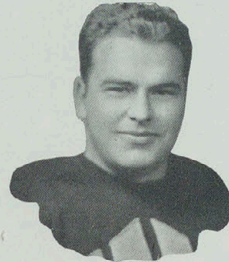
GLADDEN DYE



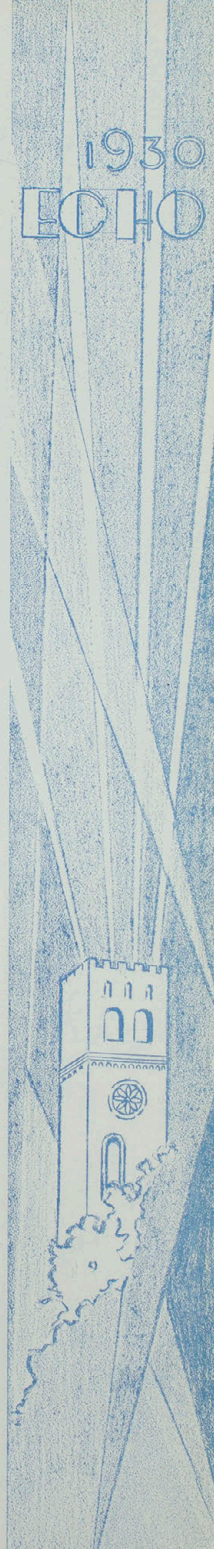
ARLINGTON VIETH

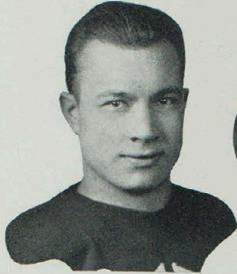
## Kirksville Teachers 6 Haskell Indians 22

On November 18, the Pedagog gridsters went down to defeat before the powerful Haskell Indian team in a night game at Lawrence, Kansas. The game ended 22 to 6, but it was a much closer one than the score indicates. The game was originally scheduled to be played in Kansas City on the previous Saturday, but incessant rains for two days caused the postponement of the game. Haskell scored the first two touchdowns, then the Bulldogs garnered their only score on a pass from Jimmie Turner to Frank Bigsby. Soon after this, Hammond and House, two of Faurot's best plunging backs, were injured and the other players were so battered by the huge line of the Indians that they never threatened the Haskell goal again. The game which was played under the powerful floodlights of Haskell's field was the first night game in which the Bulldogs had ever engaged.



CHARLES MURRELL, JR.





CLARENCE MURPHY



RICHARD HOUSE



LOWELL WADE

## Kirksville Teachers 7 Maryville 6

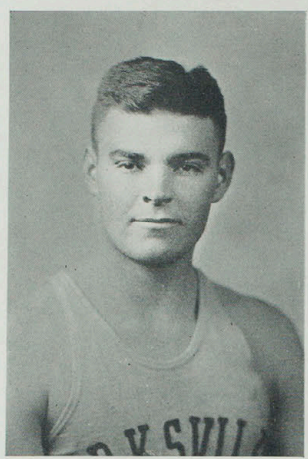
Kirksville defeated Maryville for the championship of the M. I. A. A. in a closely contested game, 7 to 6, on Thanksgiving day at Maryville. The Bulldogs were trailing 6 to 0 at the end of the first half after a Maryville end had intercepted a pass and dashed 70 yards for a touchdown. Their try for point was unsuccessful because both teams were off-side. Their second attempt was frustrated when Murphy, stocky guard, blocked the kick. In the third quarter Hatcher, a shifty halfback, reversed the field in splendid fashion and sprinted 67 yards for a Bulldog touchdown. House then plunged the line for the point that won the championship. Maryville then resorted to a passing game in a vain effort to score. Kirksville piled up a yardage of 175 to 82 for Maryville. They also made 7 first downs to Maryville's 4.





## Basketball

## Review of Basketball Season



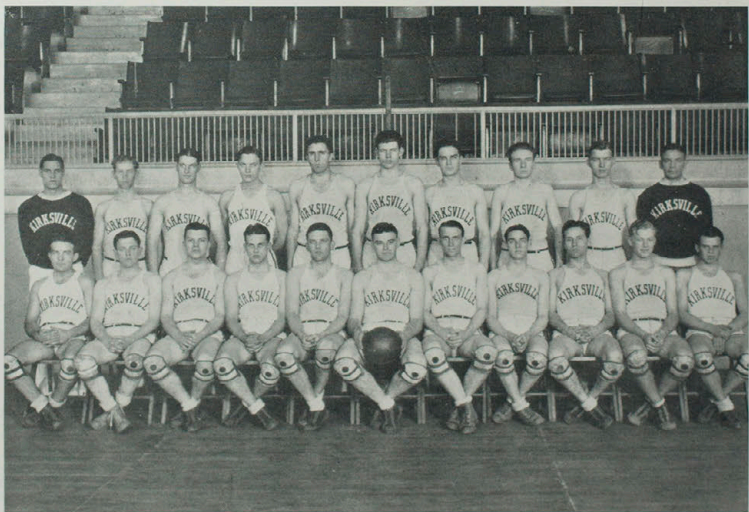
FRANK BIGSBY, Captain

The Bulldog basketeers of '29 and '30 played 21 games, winning 11 and dropping 10 and placing third in the M. I. A. A. conference.

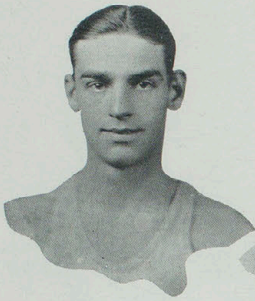
The four game series with the Cape Girardeau Indians was the only one in which the Purple and White made a clean record.

The first two games were played here. Kirksville had little difficulty disposing of their opponents in the first encounter, which ended 33-21, but the second game was a hard earned victory. The Indians led throughout the contest until the Bulldogs forged ahead in the closing minutes, winning 23-22. The other two games at Cape were comparatively easy, scores being 44-21 and 32-24.

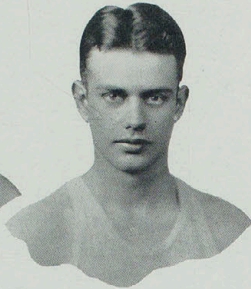
In contrast to the four victories over the Indians were the four loses to the powerful Maryville quintet who won every game they played and who were champs of the conference. The first two meetings were staged at the home



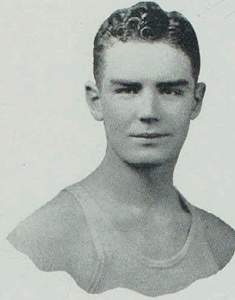
THE BULLDOG BASKETBALL SQUAD



ROBERT EVERHART

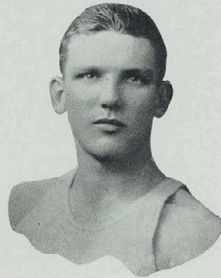


ROBERT VAUGHT



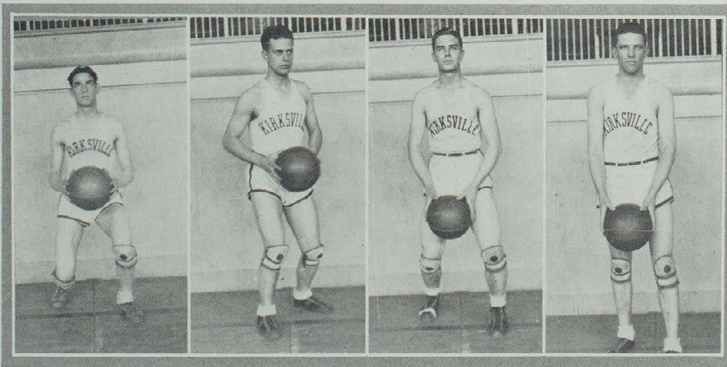
CARL PETTIGREW

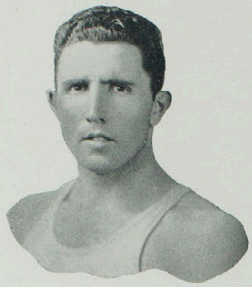
of the Bearcats. The first mix was a lopsided victory, the final score being 37-12. A far better brand of ball was played by the Bulldogs the second night, but they were not equal to their opponents and the final count was 26-13. The final games with Maryville were played before packed throngs in Kirk Auditorium, bringing the season to a close. Everything to win and nothing to lose was the Bulldog's case. If they won it would be Maryville's first defeat of the year, and if they lost, their conference status would remain unchanged. Maryville won the first encounter by three points, 28-25. Kirksville started off in great fashion,



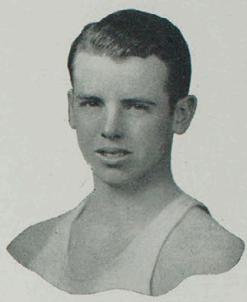
HAROLD PROTIVA

commanding a lead for three-fourths of the game, but the accurate shooting of the Bearcats once more staved off defeat. Never before did Kirksville have a more determined team enter a ball game than did she the last tustle with the Bearcats. The Bulldogs seemed hopelessly beaten for half of the game, then they suddenly staged a brilliant rally, forging ahead

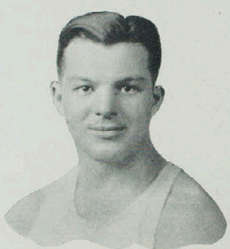




WILLIE BARTON



EARL HATCHER



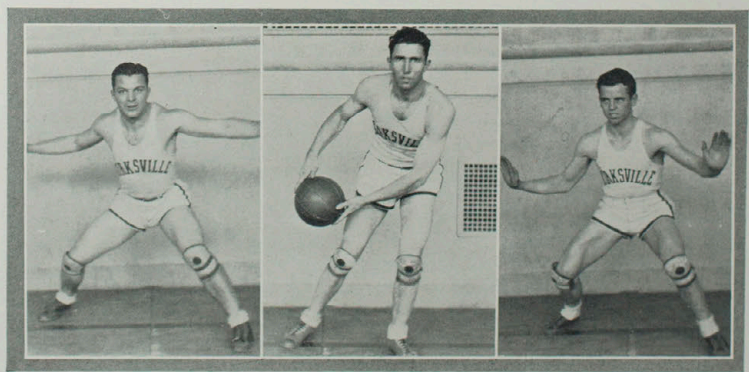
TRUSTEN McARTOR

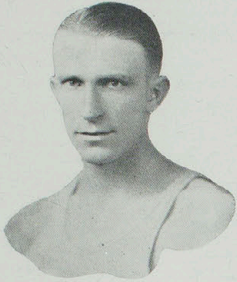
eight points. Sensational Bearcat shooting and a Bulldog foul cost Kirksville the game in the final seconds of play.

Springfield was subdued in both games here, and each team won a game at Springfield. The scores here were 35-28 and 44-28. In both games the two teams were on even terms during the first half, but Faurot's men launched offensive attacks that put them well in front. The Bulldogs received a Bear setback in the first game at Springfield. The score was 40-32. They were able to score as many points from the field as were their opponents, but failure to make their free tosses register, cost them the ball game. The men came

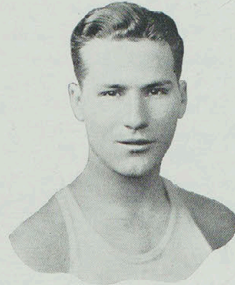
out of their slump in the final tilt winning 34-27.

The Mule of Warrensburg kicked the Bulldog hard when she won three of the 4 game session. The first game here was a hotly contested affair, both teams see-sawing back and forth for the lead. The Mules came out on the long end of the score, 28-27. In the sec-





WYMAN HENRY



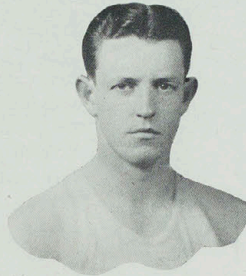
ALBERT SADLER

ond game Warrensburg lead until the latter part of play when the Bulldogs warmed up, netting them the ball game 34-25. The Mules scoring machine was too much for the home boys to repel in the third game which was played at Warrensburg and they won 38-19. The next game was much closer, both teams scoring the same number of field goals, but Warrensburg tossed in four more charity throws than did the Bulldogs. The score was 38-34.

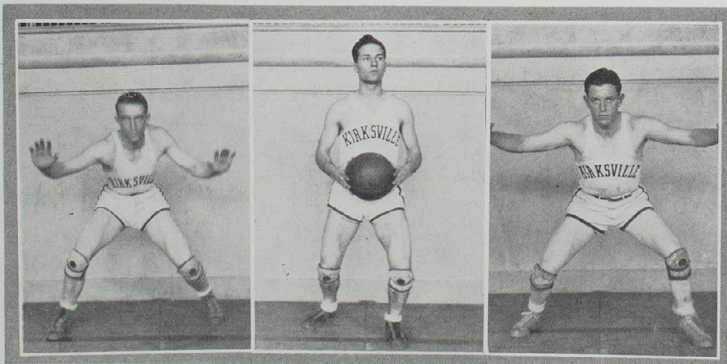
Of the five independent games in which the Purple and White engaged, three of these were chalked up on the winning side of the ledger.

The first trip of the season consisted of games with Chillicothe Business College, Kansas City Life, and St. Joseph Junior College. The Bulldogs were successful in each of these encounters, scores being: Kirksville 37, Chillicothe 13; Kirksville 29, Kansas City Life 19; Kirksville 36, St. Joseph Junior College 20.

In both of their other independent games the Bulldogs were defeated.



FRANK FICKE



Central's fast breaking forwards were hitting goals from all angles and though they had a huge lead at halftime the Bulldogs came back strong the final period, but could never overtake them. The score was 41-35.

A nice brand of basketball was played by the Bulldogs against Concordia Seminary at St. Louis, but they were not powerful enough to vanquish the team which had several victories over university fives.

Thus was the season of '29 and '30. Kirksville has had teams finish higher in her athletic history but she has never had a scrapper group than this year's one, which Faurot moulded out of only three letter men.



## Season's Record

KIRKSVILLE	37	CHILLICOTHE	13
KIRKSVILLE	29	K. C. LIFE	19
KIRKSVILLE	36	ST. JOE JR. COL.	20
KIRKSVILLE	33	CAPE GIRARDEAU	21
KIRKSVILLE	23	CAPE GIRARDEAU	22
KIRKSVILLE	35	CENTRAL	41
KIRKSVILLE	12	MARYVILLE	37
KIRKSVILLE	13	MARYVILLE	26
KIRKSVILLE	44	CAPE GIRARDEAU	21
KIRKSVILLE	32	CAPE GIRARDEAU	24
KIRKSVILLE	35	SPRINGFIELD	28
KIRKSVILLE	44	SPRINGFIELD	28
KIRKSVILLE	27	WARRENSBURG	28
KIRKSVILLE	34	WARRENSBURG	25
KIRKSVILLE	19	WARRENSBURG	38
KIRKSVILLE	34	WARRENSBURG	38
KIRKSVILLE	32	SPRINGFIELD	40
KIRKSVILLE	34	SPRINGFIELD	27
KIRKSVILLE	26	CONCORDIA	33
KIRKSVILLE	25	MARYVILLE	28
KIRKSVILLE	23	MARYVILLE	25
Total	627	Total	582

## M. I. A. A. Standing

	WON	LOST	PCT.
Maryville . . . . .	16	0	1.000
Warrensburg . . . . .	10	6	.622
Kirksville . . . . .	8	8	.500
Springfield . . . . .	5	11	.312
Cape Girardeau . . . . .	1	15	.062



## Track

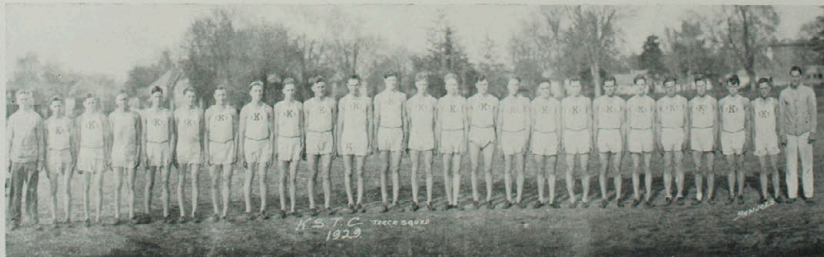


JAMES STREETER, Captain

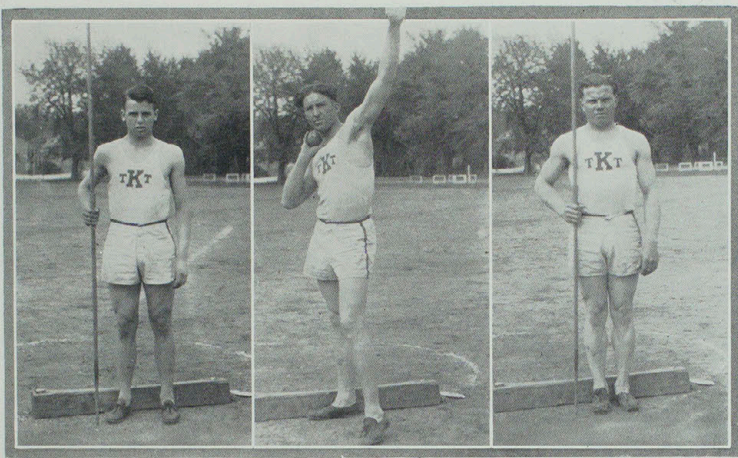
## Review of Track Season

THREE victories, one defeat, and fourth place in the state conference meet—such was the record of the Bulldog Track Team of '29.

Kirksville opened the season in true Bulldog style when they overwhelmed the Ducks of Chillicothe Business College 70 to 57 at Chillicothe April 12. Although the Purple and White won only five firsts out of the fifteen events they made their seconds and thirds count. Keethler was high scorer for the Bulldogs, having 12 points to his credit.



THE BULLDOG TRACK SQUAD

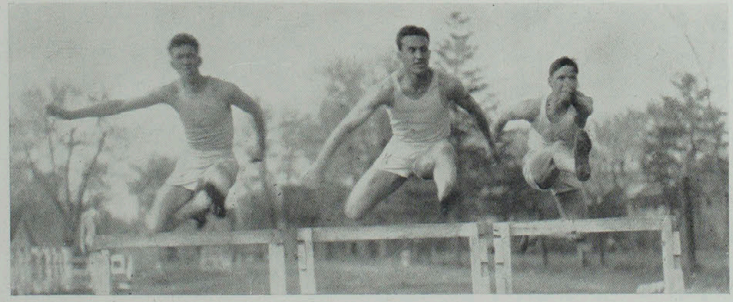


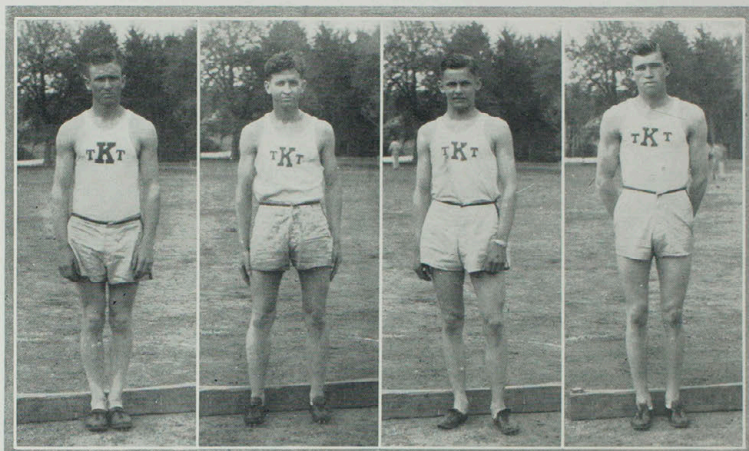
EARL HATCHER

HAROLD HERN

WILLIAM LOMAX

The next meet was with Culver Stockton, Saturday morning, April 27. The Kirksville men again romped away with the meet before a large crowd which consisted mostly of the visiting high school contestants. Keethler, with 13 points to his credit, won high scoring honors of the meet.





LEO KENNEDY

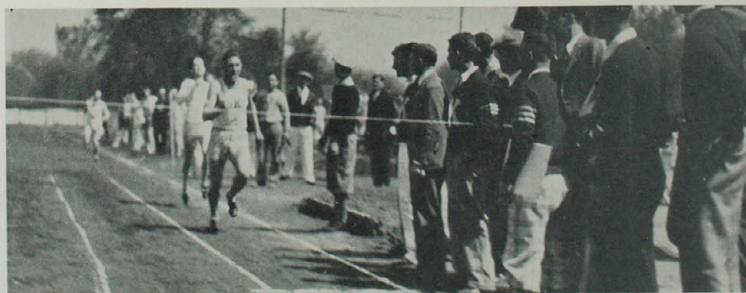
DANIEL TETLOW

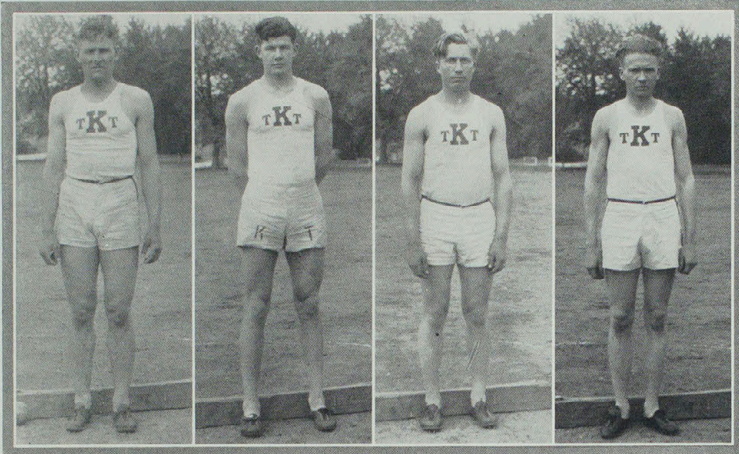
JAMES GAFFNER

RAY KEETHLER

The Bulldogs then nipped the Kemper cadets  $68\frac{1}{2}$  to  $58\frac{1}{2}$  in a close and interesting meet held in our own stadium.

The first defeat of the season was handed Simpson's men when they were overwhelmingly defeated at Maryville by the Wildcats with a score of 80 to 56.

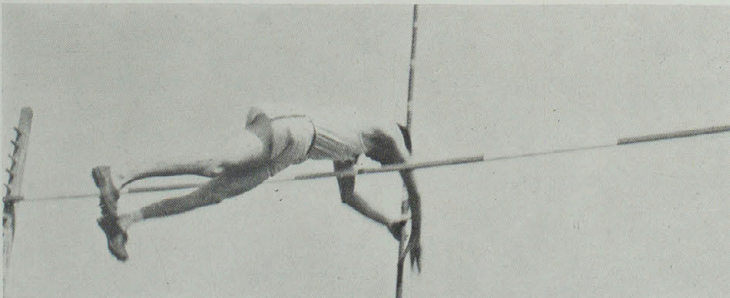




FRED SCHWENGELS    RICHARD MOORMAN    FLOYD GOLDSBY    ERNEST MASON

The Bulldogs dropped the curtain on the season of '29 when they placed fourth in the state meet held at Springfield, May 11. The M. I. A. A. teams placed in their meet as follows: Warrensburg, first with  $62\frac{1}{2}$  points; Springfield and Maryville tied for second and third with  $33\frac{1}{2}$  points; Kirksville receiving third with  $32\frac{1}{2}$ ; Cape Girardeau ranking fourth with 14 points.

Although Moorman's tie for first place in the high jump was the only event in which the men of the purple and white led, they managed to carry off several lower honors.



### Season's Record

KIRKSVILLE vs CHILLICOTHE at Chillicothe . . . . .	70	57
KIRKSVILLE vs CULVER- STOCKTON at Canton . . . . .	77	54
KIRKSVILLE vs KEMPER at Kirksville . . . . .	68½	58½
KIRKSVILLE vs MARYVILLE at Maryville . . . . .	56	80
Total . . . . .	271½	249½



# BOOK SIX

## FEATURES

The development of modern times and its faith in humanity. Based upon the fundamental doctrine of human equality, the great educational task of the state controlled and supported, free, public school is to realize the ideals of Democracy.





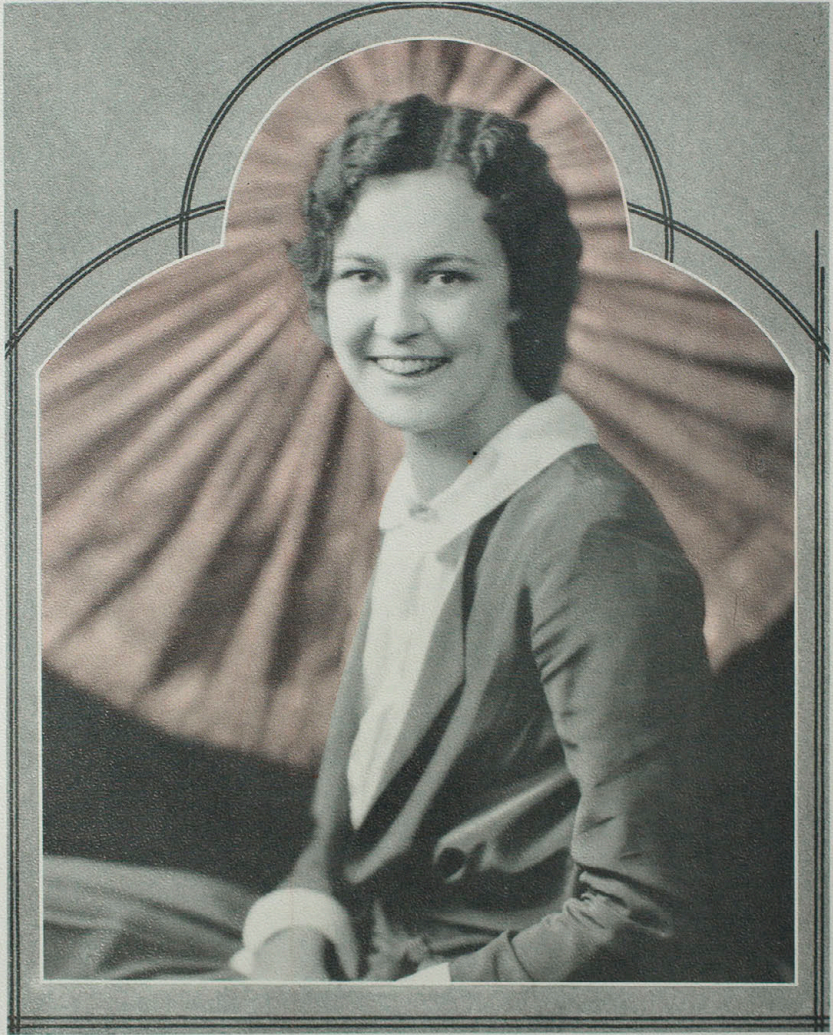
## Queens



*Panetta Manning*  
*Freshman Queen*



*Marie Wheatcraft*  
*Sophomore Queen*



*Edith McGlashon*  
*Junior*  
*Queen of the School*



*Dorothy McClure*  
*Senior Queen*

## *In Appreciation*

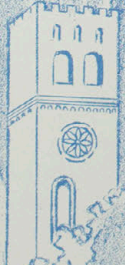
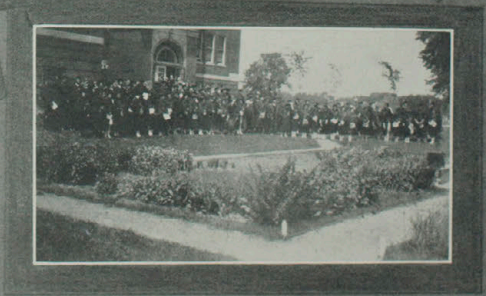
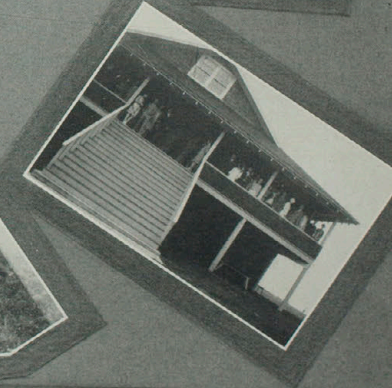
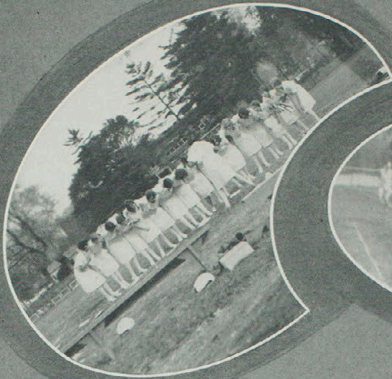
*The Queens for the 1930 Echo were chosen by Mr. John Gilbert, who has, in the past few years, established himself as one of America's most popular motion picture stars*

*We take this opportunity to thank Mr. Gilbert for his services in the selecting of these Echo Queens*

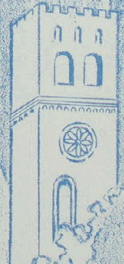
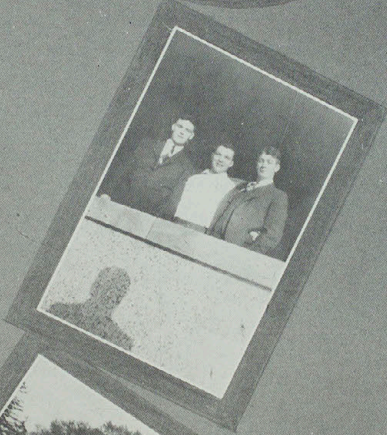
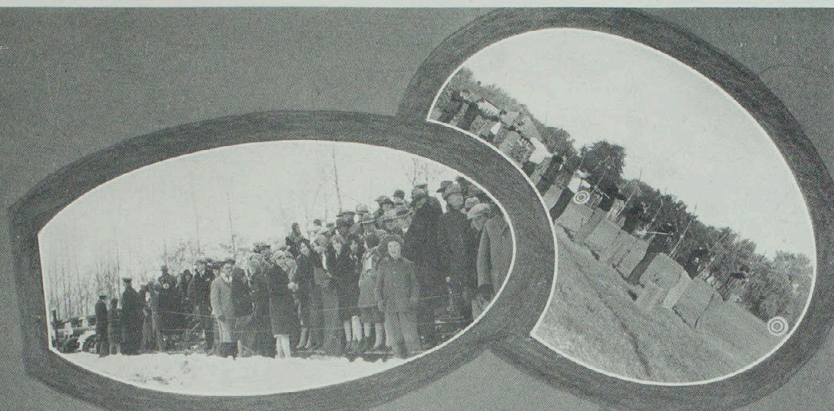


## Campus Life

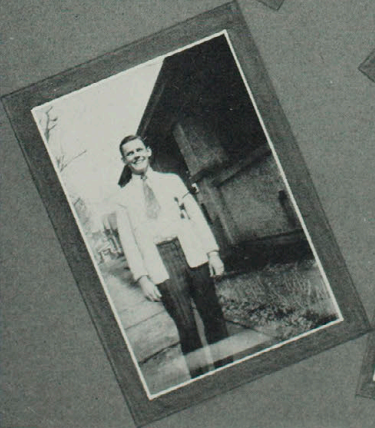
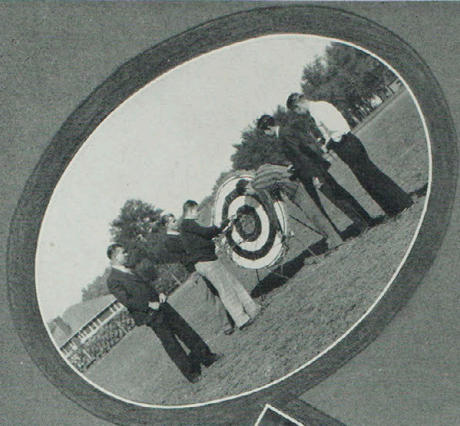
1930  
ECHO



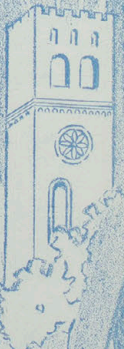
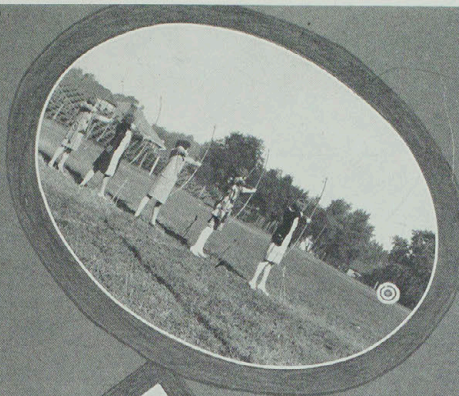
1930  
ECHO



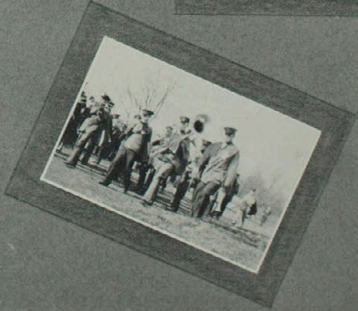
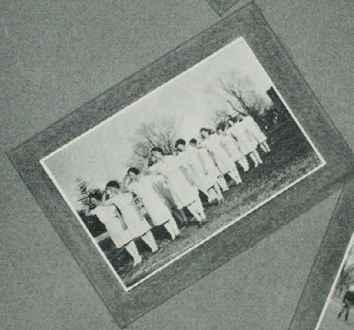
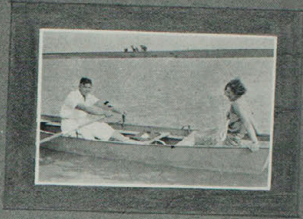
1930  
ECHO



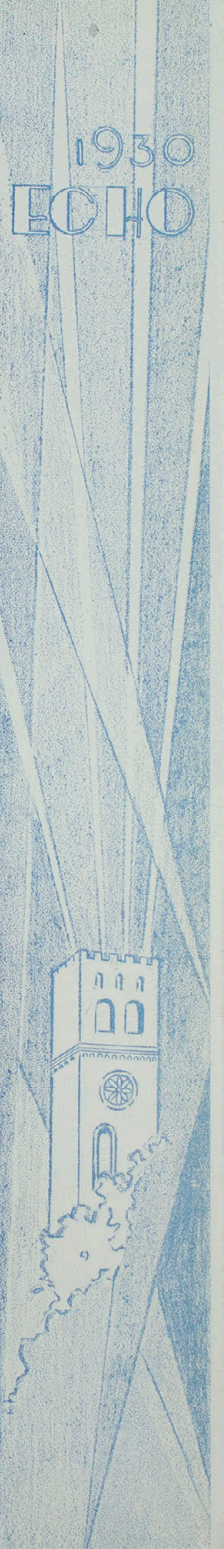
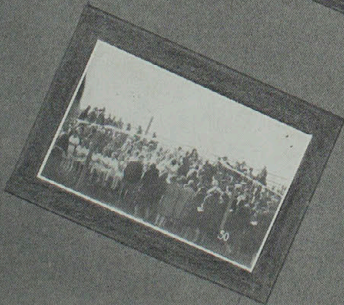
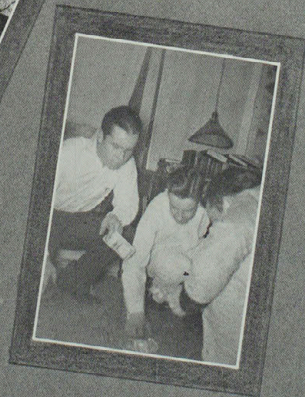
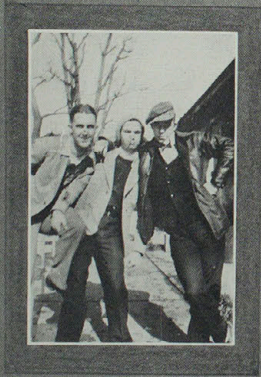
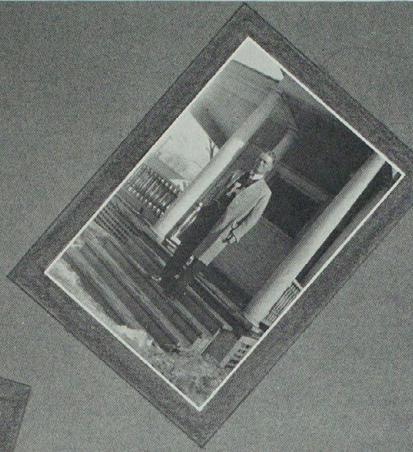
1930  
ECHO



1930  
ECHO



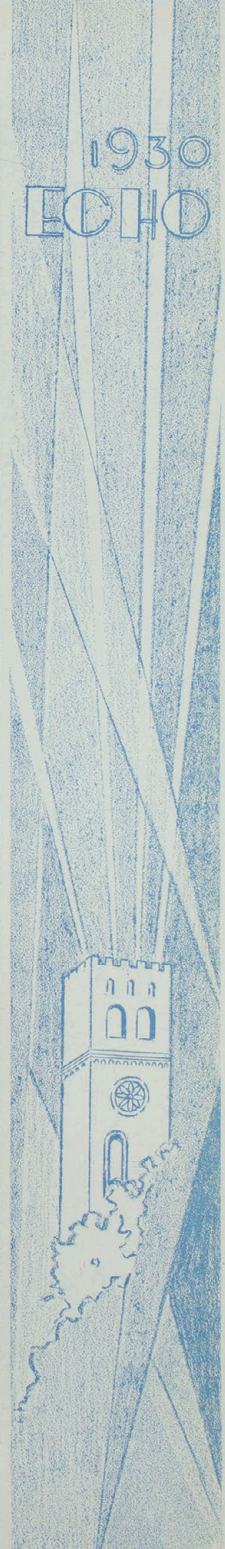
1930  
ECHO



1930  
ECHO

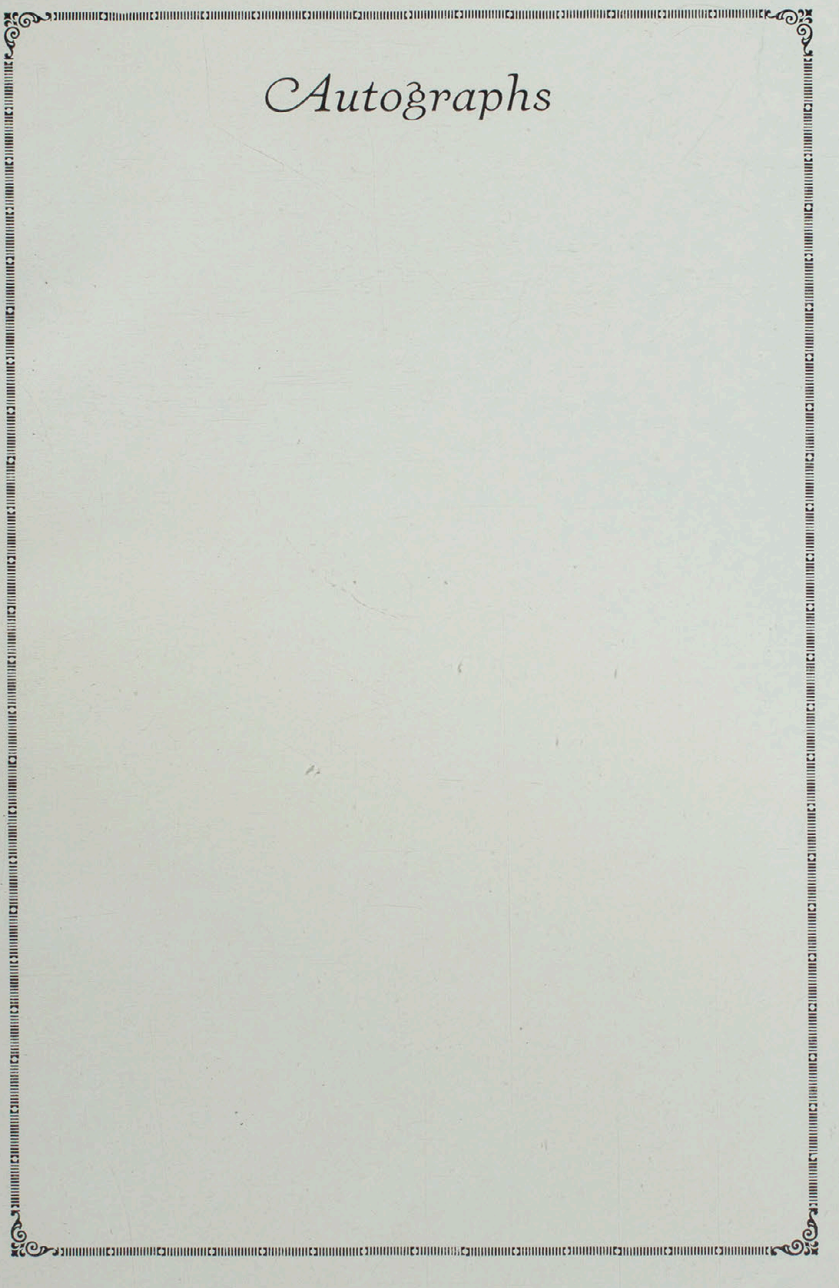


1930  
ECHO



1930  
ECHO





# *Autographs*

**Finis**





