

NORTHEAST TODAY

SPECIAL EDITION
THURSDAY, FEB. 15

HAPPENINGS

TODAY, FEB. 15

- 7:15 am Doughnut Sale, VH, North Door
- 10 am-3 pm Campus Shootout Signup, SUB
- 4:30 pm Windfall Mtg., 308 A-H
- 6:30 pm Rugby Mtg., 121 VH
- 6:30 pm SPO Mtg., Speech & Hearing Clinic, 1st Fl., VH
- 7 pm Alcohol Awareness Orientation, Geo. Rm., SUB
- 7 pm Poetry Reading, 305 A-H
- 7 pm Phi Alpha Theta Mtg., Alum. Rm., SUB
- 7 & 9 pm "Texas Chain Saw Massacres," Aud., BH
- 7:30 pm "The Cults" Seminar, 172 VH
- 8 pm "Rimers of Eldritch," Little Theatre, BH
- 9 pm "Come Unity," Act. Rm., SUB
- 9:30-12 Midnight Skating Party, Leo's Roller Rink

FRIDAY, Feb. 16

- 7:30 am 1 pm Bake Sale, VH
- 1:30 pm H.S. A & AA Girls' Finals, Arena, PB
- 5 pm Deadline, Cardinal Key Applications, SUB Mailbox
- 7 & 9 pm "The Other Side of the Mountain," Aud., BH
- 7-10 pm "A Touch of Black Art," Act. Rm., SUB

SATURDAY, Feb. 17

- 1 pm H.S. A & AA Girls' Finals, Arena, PB
- 2-3 pm "Black History: Past & Present," 212 SH
- 3 pm Arm Wrestling, Kirk Gym

SENIOR TESTS will be given the week of February 26 to March 1 in the Administration / Humanities Building. Anyone planning on graduating at the end of spring semester who has not taken the test should do so. If you have not received a letter advising you of the day, room and time, contact Testing Services, 103 A-H, ext. 7184.

KAPPA OMICRON PHI home economics organization pledges will be selling doughnuts starting at 7:15 this morning at the north door of Violette Hall.

SIGNUP FOR THE CAMPUS SHOOTOUT, annually sponsored by the Blackjack Rifle and Pistol Club, will be from 10 a.m. to 3 p.m. today and Friday in the Student Union Building. Entry fee for each four-person team will be \$5. The shootout, scheduled for 2-8 p.m., Monday through Thursday, Feb. 19-22, will award 14 trophies, seven in the men's and seven in the women's categories. A portion of the proceeds will go to the Nancy Lindsley Memorial Scholarship Fund.

THE WINDFALL STAFF will have a mandatory meeting for all members and anyone interested in critiquing the winter issue and making plans for the spring issue. The meeting will be at 4:30 this afternoon in 308 Administration / Humanities Building.

A RUGBY MEETING to organize a 1979 spring team will be held at 6:30 tonight in 121 Violette Hall. A rugby film will be shown. Anybody interested in playing for the team may attend or call Chris Maida, organizer, ext. 2284, for more information.

THE SPEECH PATHOLOGY ORGANIZATION will meet at 6:30 tonight in the Speech and Hearing Clinic, first floor, Violette Hall. Anyone interested in attending is welcome.

AN ALCOHOL AWARENESS ORIENTATION, featuring Sam Detwiler of the Kirksville Counseling Center and a film, "Chalk Talk," will be held at 7 tonight in the Georgian Room of the Student Union Building, with a reception immediately following. The public is invited to attend.

SIGMA TAU DELTA English honorary will sponsor a poetry reading featuring Jon Eastman, 1976 NMSU graduate and current director of the Writing Laboratory, reading his poetry. The reading will be at 7 tonight in 305 Administration / Humanities Building. The public is welcome to attend.

President Huh Visits NMSU

Exchange Agreement Formalized

A four day visit to Northeast Missouri State University by the Honorable Jong Hyeon Huh, President of Busan National University, Busan, Korea has formalized plans for a faculty and student exchange between the two universities. The agreement was signed in Busan in October 1978 when President McClain, Board of Regents President Sam A. Burk and Mrs. Burk visited Busan.

Busan National University is located at Busan, a seaport city of approximately two million in the southern part of the Republic of Korea. The main campus of the University is at the foot of Mt. Kumjung in Dongnae, a suburb some ten miles northwest of downtown. The College of Medicine and its affiliated institutions and facilities are located in downtown Busan. The university administration offices and all the graduate schools and the colleges except the college of medicine are located at the main campus, known as Dongnae Campus. Among other noteworthy institutions affiliated with the college of medicine is the University Hospital.

Among the professional programs the university offers are law and political science, public administration, engineering, medicine, pharmacy, education, liberal arts and sciences, business, and home economics.

President Huh concluded the visit today after a full schedule of activities acquainting him with Northeast and its programs, faculty, staff, and students.

President Huh was the guest of honor at a dinner attended by NMSU honor students on Monday evening prior to ceremonies honoring him at the pre-game and half-time activities of the NMSU-SMS basketball game in Pershing Arena.

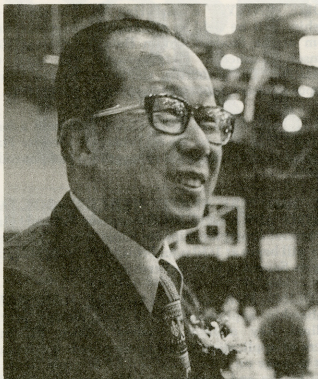
Tuesday's schedule was highlighted by a tour of Missouri's capital city. He was given a tour of the Missouri State Supreme Court Building by Missouri Supreme Court Judge Albert Rendlen, former NMSU Regent. He was introduced on the floors of both the Missouri Senate and the Missouri House of Representatives. The Tuesday activities concluded with a visit with Commissioner of Elementary and Secondary Education, Arthur L. Mallory.

Wednesday's activities included a tour of the campus, and a visit with the Kirksville Rotary Club. Following a 1:30 news conference President Huh addressed an assembly of faculty and students in the Alumni Room and was then guest of honor at a reception in the quiet lounge. He met with the Board of Regents at a 4:30 meeting and was their dinner guest following the meeting.

Today's concluding activities include a visit to St. Louis where he will be a guest at the Rotary Club.

Commenting on the visit of President Huh NMSU President Charles J. McClain said: "On behalf of the University faculty and staff, I express our great pleasure and honor on his visit. We look forward to the continued association of two great universities.





Following his arrival at Clarence Cannon Airport, President Huh was honored at ceremonies at the NMSU-SMS basketball game in Pershing Arena. Escorted to the center of the court by the cheerleaders, he received an NMSU basketball jersey from Co-Captain Ved Green.

"Happenings" Column con't.

SUNDAY, Feb. 18

7 pm Greenhouse Theatre, Geo. Rm., SUB

7 & 9:15 "The Boys in Company C," Aud., BH pm

7:10 pm Chili Dinner, basement, Brew. Hall

A BAKE SALE sponsored by Alpha Sigma Gamma service sorority will be from 7:15 a.m. to 1:30 p.m. Monday, Feb. 19, in Violette Hall and the Administration/Humanities Building.

PHI ALPHA THETA, the historical honor society, will hold a meeting featuring Dr. Olin Drennan, Rieger-Black distinguished professor of physics and natural science, speaking on "Methodologies of the Historian and the Scientist." The meeting will be at 7 tonight in the Alumni Room of the Student Union Building. The public is invited.

"TEXAS CHAIN SAW MASSACRES", sponsored by Sigma Tau Gamma social fraternity, will be shown at 7 and 9 tonight in Baldwin Auditorium. Tickets may be purchased for \$1 per person today in the Student Union Building or for \$1.25 per person at the door.

"THE CULTS," a seminar featuring Pastor Herb Swanson, a Lutheran clergyperson from Columbia, Mo., will be presented at 7:30 tonight in 172 Violette Hall. The seminar, sponsored by the United Campus Ministry, is open to the public.

"RIMERS OF ELDRITCH," a contemporary drama by Lanford Wilson, will be presented by the University Players at 8 tonight through Saturday in the Little Theatre, Baldwin Hall. Admission is free to students and faculty with identification and \$2.50 per adult and \$1.50 per child to all others. Tickets are available from 9:30 a.m. to 2:30 p.m. today and Friday in the Student Union Building.

"BLACK HISTORY" WEEK will continue today and tomorrow. Remaining events for the week, which is sponsored by the Association of Black Collegians, are:

Tonight: A skating party from 9:30 to 12 midnight at Leo's Roller Rink, N. Highway 63, with rides available from the Student Union Building at 9:30. Price of the admission and rental is \$1.50 per person.

Friday: "A Touch of Black Art" from 7-10 p.m. in the Activities Room of the SUB. Admission is 50 cents per person

Saturday: "Black History: Past and Present," featuring Dr. Shirley Morahan, assistant professor of English, from 2-3 p.m. in 212 Science Hall.

Sunday: Chili Dinner from 7-10 p.m. in the basement of Brewer Hall. Admission is 75 cents per person.

The public is invited to all events.

"COME UNITY," a gathering of Christians for worship, will be held at 9 tonight in the Activities Room of the Student Union Building. Pastor Herb Swanson, Lutheran clergyperson, will give the meditation. The gathering, sponsored by the United Campus ministry, is open to the public.

THE HORSE AND RODEO CLUB will hold a bake sale from 7:30 a.m. to 1 p.m. Friday in Violette Hall. All proceeds will go toward sponsoring a jackpot rodeo in April.

THE MISSOURI STATE HIGH SCHOOL ACTIVITIES ASSOCIATION will sponsor Missouri girls' high school championships for Class A and AA. Semifinals will begin at 1:30 p.m. Friday and finals will start at 1 p.m. Saturday, both in Pershing Arena.

DEADLINE FOR CARDINAL KEY HONORARY membership applications is 5 p.m. Friday in the Cardinal Key mailbox, Student Union Building. Letters of application to all women with a 3.0 grade point average on a 4.0 scale and 60 or more hours of credit by the end of the spring semester were mailed out this week. If you meet the qualifications but did not receive a letter, you may get an application by calling Jani Spurgeon, member, 665-7422, or Kathy Syberg, member, 665-2291.

"THE OTHER SIDE OF THE MOUNTAIN," sponsored by the Student Activities Board, will be shown at 7 and 9 p.m. Friday in Baldwin Auditorium. Admission will be free to holders of student activity cards and \$1 to all others.

THE ACCOUNTING CLUB is providing free income tax service for the campus and community from 9 a.m. to 12 noon every Saturday throughout April 14 (with the exclusion of March 3) at 140 Violette Hall. For further information call Bill Holper, sponsor, ext. 7791.

AN ARM WRESTLING CHAMPIONSHIP, featuring professional arm wrestler Rod Alberts as referee, will be sponsored by Phi Sigma Epsilon social fraternity with tournament preliminaries beginning at 3 p.m. Saturday in Kirk Gym. All men and women may enter by paying a \$3 entry fee and by obtaining entry blanks at the Student Union Building or Raacks Sporting Goods Store, 110 N. Franklin. Weigh-in for the event will be at 1 p.m. on Saturday. The weight classes are: 150-under; 150-180; 180-210; and 210-over. For more information call Kirk Koechner at 665-6705.

THE GREENHOUSE THEATRE talent show will be presented by the Student Activities Board at 7 p.m. Sunday in the Georgian Room of the Student Union Building. Admission is free for all who attend.

"THE BOYS IN COMPANY C" will be shown at 7 and 9:15 p.m. Sunday in Baldwin Auditorium. Admission for the movie, which is sponsored by the Vets Club, will be \$1 per person at the door.