

V
378.778
N81y
1945
c.2

The
ECHO



1945

NORTHEAST MISSOURI STATE TEACHERS COLLEGE

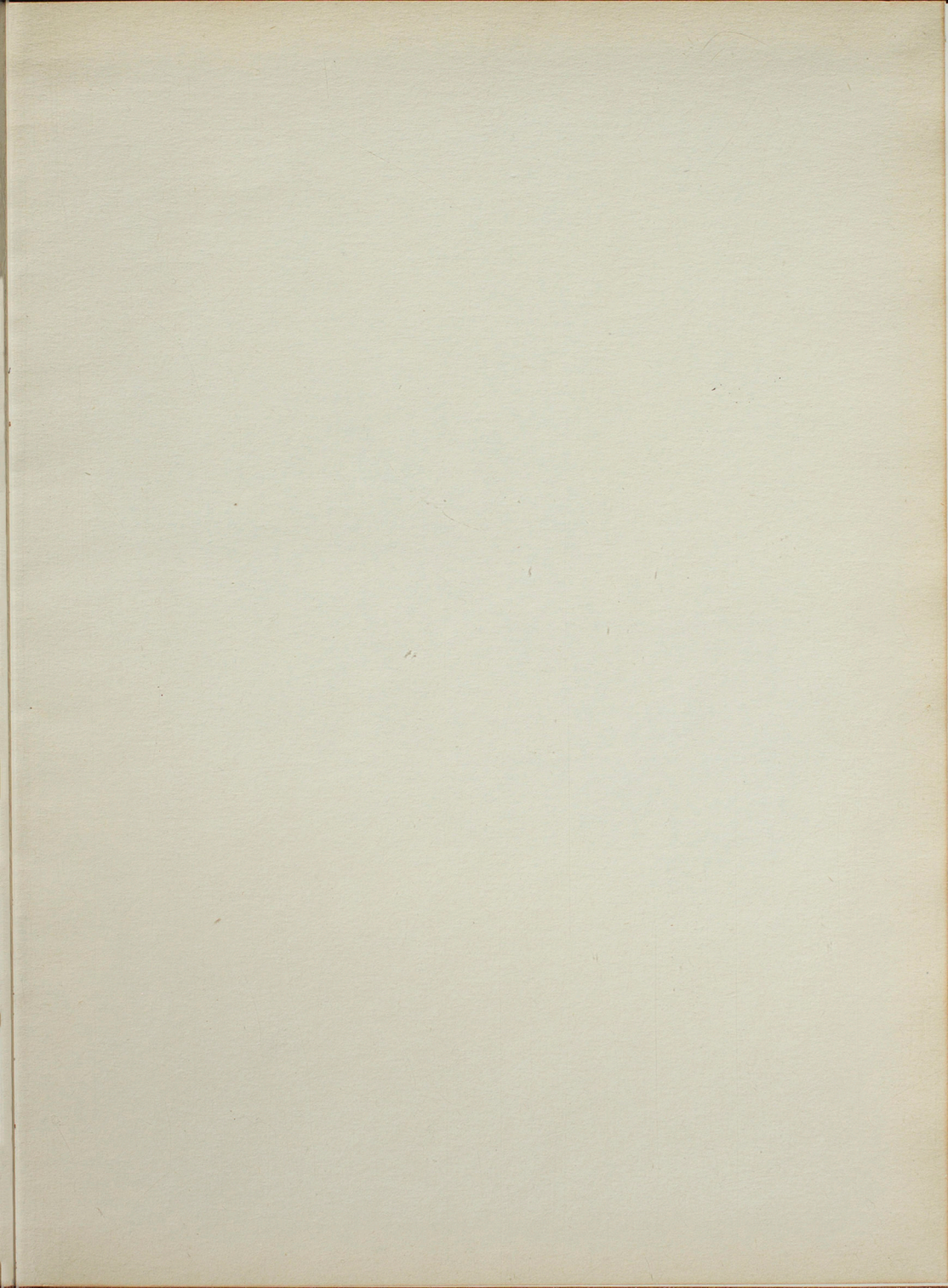


Northeast Missouri
State Teachers College

OFFICIALLY
WITHDRAWN
LIBRARY



KIRKSVILLE, MO.



NORTHERN MISSOURI
ARCHIVES
copy 1
STATE UNIVERSITY



the influence of learning . . .

Northeast Missouri State Teachers College, Kirksville, Missouri



Miss Agnes Slemons

Adviser
Kirksville, Missouri



Elmer Sharpe

Editor-in-chief
Hunnewell, Missouri



Virginia Fahrner

Business Manager
Keosauqua, Iowa

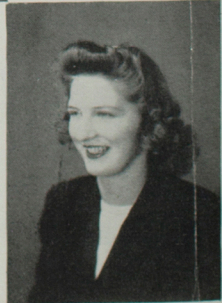
Bertha Mae Ferguson

Assistant Editor
Kahoka, Missouri



Iris Mittendorf

Assistant Business Manager
Bucklin, Missouri





BALDWIN HALL IN SUMMER

the 1945 Echo

OLD MISSOU'

WORDS by Basil Brewer 1901

Old Miz-zou and old Miz-zou-ri Our hearts the school has won. Fond-ly

cling we to the mem-ory of Old Mis-sou-ri's Son. Glad-ly

Thee our hearts we ten-der In the dim and flickering light. Every

lad a proud de-fen-der of the Purple and the White.

Karl E. Webb

2048

sp 60

copy (as you can see)



OFFICIALLY
WITHDRAWN

dedicated to . .



PROFESSOR
JAMES
STEPHEN
STOKES

Upon the decision to use TEACHING as a theme for our yearbook, it seemed fitting that the 1945 Echo be dedicated to Professor James Stephen Stokes, who has been teaching for nearly sixty years.

Coming here in 1905, after being graduated from the University of Missouri and Harvard, Professor Stokes developed a department of physics and physiography.

In 1925 he was asked to landscape the campus and at the length of three

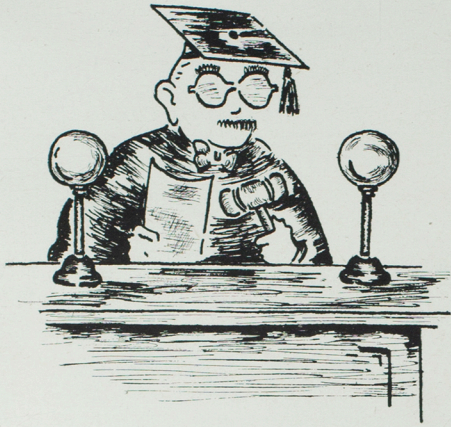


The Garden as Mr. Stokes Created It

and one-half years had accomplished the task. He was so successful that he was asked to convert a swamp on the college farm into a stadium, which, when completed in 1930, became known as Stokes Stadium.

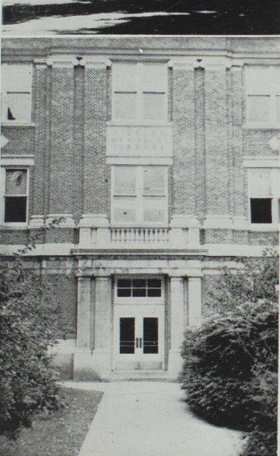
Without Professor Stokes' devotion, initiative, and tireless efforts, the Teachers College could not be all that it is today.

So it is with humblest gratitude that this book is dedicated to Professor Stokes.



Upon the substantial foundation of the Board of Regents rest the four corner stones of the campus — President Ryle, Dean Eubank, Mrs. Ellison, and the faculty. Ably assisted in many ways by the heads of the divisions, the Teachers College moves progressively forward guided skillfully by their efforts.

Our Teachers are Capably Directed by . . .



the Administration



Dr. Walter H. Ryle, in his eighth year of administration, is more than just the President of the Northeast Missouri State Teachers College; he is the very spirit of the institution. Dr. Ryle personifies the initiative, strength, and drive that has made K. S. T. C. grow in the past and that will make us continue to grow in the future.

Under his progressive leadership new buildings have been erected, a new curriculum has been established, and other outstanding features added. During this period of war, President Ryle is meeting the numerous problems which face our institution admirably and is faithfully striving to provide the students with better training.

The PRESIDENT



The President
and the
Board of Regents
of the
Teachers' College

BOARD OF REGENTS

The Board of Regents comprises the highest administrative unit of the Teachers College. The Board is made up of six men selected from various parts of the district by the governor of the state. The state superintendent of schools is an ex-officio member. The powers of all other administrators are received through the authority of the Board of Regents.

The employing of teachers, receiving bids on work on the campus or buildings and the signing of contracts make up a part of the duties of the Board of Regents.

Activities and policies of the Teachers College are to a large measure controlled and decided upon by the Board in their quarterly meetings.

Present members of the Board are W. A. Cable, Hannibal; J. A. Cooley, Kirksville; R. R. Quinn, Fulton; Supt. R. C. Scantlin, Ex-officio member, Jefferson City; C. W. Shelton, Macon; H. I. Sears, La Plata; and R. A. Zeigel, Kirksville.



C. W. Shelton



R. A. Zeigel



R. C. Scantlin



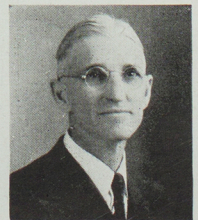
H. I. Sears



J. A. Cooley



W. A. Cable



R. R. Quinn

DEAN OF THE FACULTY



Dr. L. A. Eubank, dean of the faculty, is the man who is responsible for those splendid assemblies we have had this year. He supervises the granting of credits, gives out information about students to employers, arranges class schedules, and acts as chairman of the Curriculum Committee. The headship of the Division of Education is just one more duty which keeps him the busiest man on the campus.

DEAN OF WOMEN

Mrs. S. H. Ellison, dean of women, in her capacity as director of the freshman orientation program, becomes the first friend of all new students. Not only does she supervise the housing of students, enforce regulations, sponsor the Pan Hellenic Council, and manage the school calendar of social functions, but no college activity is complete without her gracious charm as hostess. Her work is co-ordinated with other activities of the Division of Personnel Service.



HEADS OF DIVISIONS

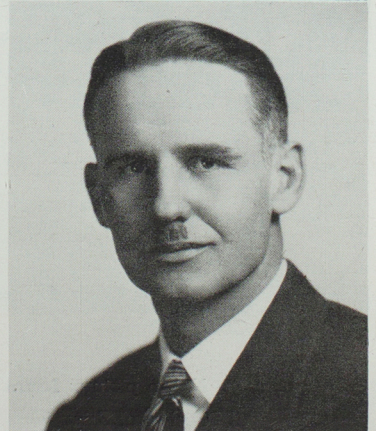
Dr. C. H. Allen is head of the Division of Personnel Service. This is the department of the college which aids the students in making social, educational, and vocational adjustments. Through the Bureau of Guidance the division deals with these personal problems and relationships of the students.



Prof. J. T. Angus heads the Division of Extension Service. This division deals with public relations. It includes the Bureau of Field Service, Bureau of Correspondence and Extension Teaching, Bureau of Placements, and the Bureau of Alumni Service.



Prof. Bailey Wright has taken over the direction of the Division of Business Service due to the resignation of Henry L. Enochs. This division is responsible for administering funds of the Teachers College. It sees to the maintenance of the college, handles all disbursements of the school, and administers the Student Memorial Loan Fund.



THE FACULTY

Norvell C. Allen, Agriculture; **Edward S. Avison**, Speech; **Otho L. Barnett**, Industrial Arts; **Berenice B. Beggs**, English; **John L. Biggerstaff**, Music, Head of Division of Arts; **Sylvia G. Browne**, Librarian; **Glenn V. Burroughs**, European History

Clara H. Clevenger, Economics and Sociology; **Lewis C. Clevenger**, Biology; **Sherod J. Collins**, English and Speech; **Bracy V. Cornett**, Fine and Applied Arts; **Clifton Cornwell**, Speech, Director of Alumni Activities; **Forrest L. Crooks**, Director of Bureau of Field Service; **Ruth Curtis**, Speech

Irene Dailey, Music; **Mary M. Shoush Estes**, Physical Education; **Vera E. Fawcett**, English; **Jacob W. Heyd**, Modern Languages, Head of Division of Language and Literature; **John W. Hollenbach**, English; **Ethel Hook**, Director of Libraries; **G. H. Jamison**, Mathematics, Head of Division of Mathematics.

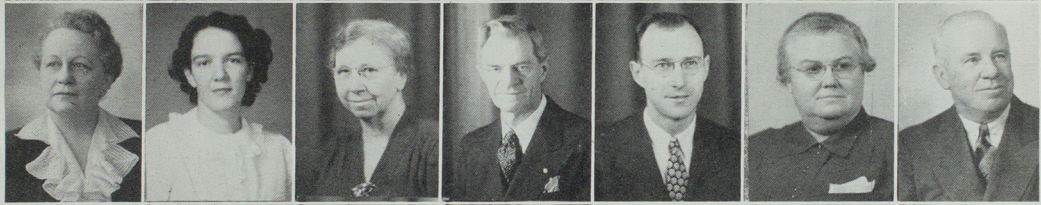
Vivian W. Kline, Physics; **Pauline D. Knobbs**, Social Science; **Llora MaGee**, Home Economics, Head of Division of Home Economics; **Viola Magee**, Latin; **C. W. Martin**, Educational Administration, Director of Bureau of Research; **A. F. Miller**, College Physician; **Sallie Pattinson**, Rural Education.

W. S. Pemberton, Mathematics, Director of Bureau of Correspondence and Extension; **Martha Redford**, History; **Noah Richardson**, Assistant Director of Correspondence Study; **Ruth L. Roberts**, Business Education; **Felix Rothschild**, Education, Director of Ophelia Parrish Laboratory School; **Paul O. Selby**, Business Education, Head of Division of Business Education; **Lucy Simmons**, American History, Head of Division of Social Science.

Agnes Slemons, Journalism and English; **Ruth Straight**, Fine Arts; **R. E. Valentine**, Music; **Nan E. Wade**, English, French, Spanish; **Karl E. Webb**, Music; **Willie Whitson**, Primary Education, Acting Director of Greenwood Elementary Laboratory School; **Clara E. Yadon**, Cataloguer.

Alma K. Zoller, Acting Head of Division of Health and Physical Education, College Nurse.

Not in picture: **Laura Summers**, Business Education; **Willis J. Bray**, Head of Division of Science.



Secretaries

Kathleen Christopher, Marjorie Barb, Mrs. Forrest Crooks,
Julie Maddox, Helen White.

Ophelia Parrish Demonstration School

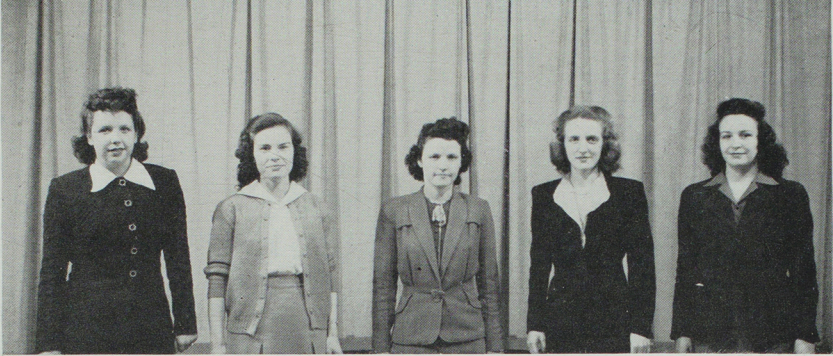
Rothschild, Curry, McCollum, Swartz, Schultz, Crow,
Bailey, Hawk, Spindler, Decker, Yowell, Wilson, Ward, Avison,
Morris, Hamlett, Carter, Parcels, Channell, Jackson, Valentine,
Stroup, Gehringer, Cooley.

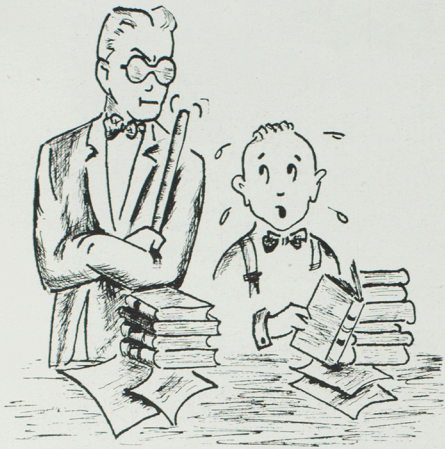
Maintenance Force

Johnson, Lair, Miley, Vickroy, Hawkins, Mountain, Teeters,
Scofield, Bauer, Gentry, Darnell, Janes, Holman, Turner, Bailey,
Marts.

Greenwood Demonstration School

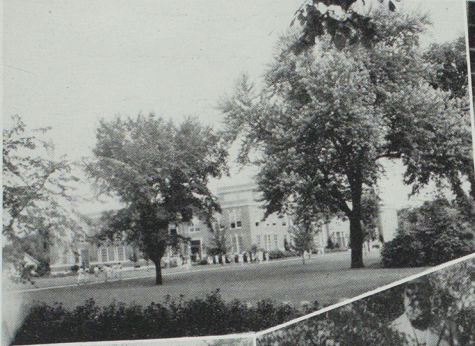
Creamer, Pemberton, Triplett, Thompson, Maffry, Whitson,
Brown, Straight, Hooker, Martin.





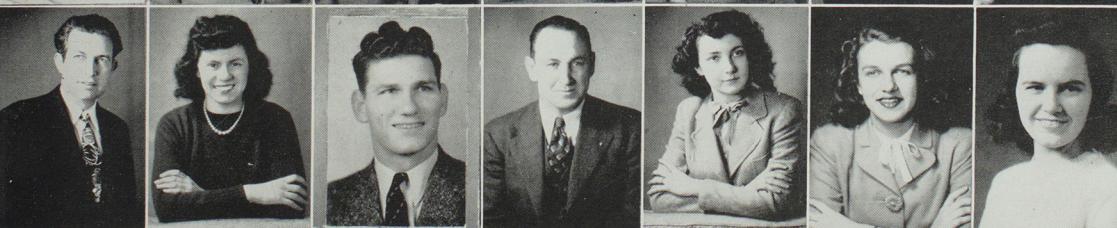
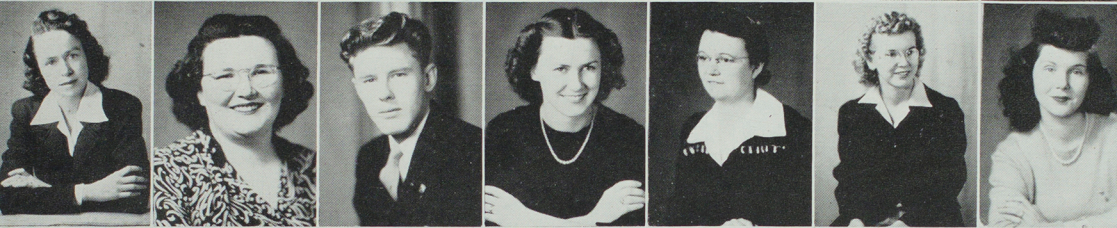
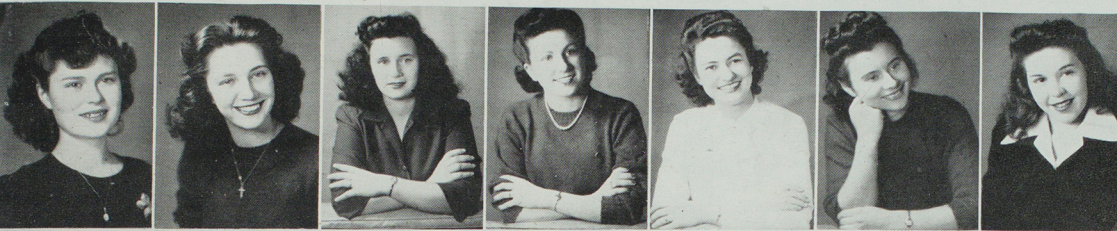
Oh, yes, of course, we did have classes. And the freshman class had men. The others had one each. Sophomores had loads of fun. Juniors had technique (what technique) and the seniors had the misfortune to graduate in May. What a time we had in

Classes



SENIORS

- Elaine Boise** . . . Memphis—Alpha Sigma Alpha, Ellen H. Richards Club
Marjorie Brockway . . . Moberly—W.A.A., Pi Omega Pi, Alpha Sigma Alpha, Cardinal Key
Viva Lee Cooley . . . Kirksville—Alpha Phi Sigma, Pi Omega Pi, Delta Sigma Epsilon, Student Council
Mildred Cornwell . . . Kirksville—Sigma Sigma Sigma, Cardinal Key, Kappa Delta Pi, Alpha Phi Sigma, and Pan Hellenic Council
Doris Davies . . . Kirksville—Kappa Delta Pi, Pi Omega Pi, Cardinal Key, Sigma Sigma Sigma
Mary E. Dawdy . . . La Plata—Sigma Sigma Sigma, Art Club, Modern Literature Club, Historical Society, Cardinal Key
Beth Dougherty . . . Chillicothe—A.C.E., Sigma Sigma Sigma, W.A.A., Art Club, Modern Literature Club
Virginia Fahrner . . . Keosauqua, Ia.—Alpha Sigma Alpha, Student Council, Kappa Delta Pi, Cardinal Key, Alpha Phi Sigma, Romance Language Club, Echo Staff, Who's Who
Corinne Gilbert . . . Hannibal—Aeolian Club
Lowell Gudka . . . Memphis—Alpha Phi Sigma, Phi Sigma Epsilon, Interfraternity Council
Mary K. Halterman . . . Gibbs—Ellen H. Richards Club
Ruth Jones . . . Kirksville—Ellen H. Richards Club, Kappa Delta Pi, Cardinal Key, Alpha Phi Sigma
Ruth Knight . . . Milan—
Judy La Frenz . . . Wyaconda—Alpha Sigma Alpha, Kappa Delta Pi, Student Council, Modern Literature Club, Cardinal Key, Reader's Round Table
Louise Lansdale . . . Greentop—Sigma Sigma Sigma, Ellen H. Richards Club
Evelyn Ledford . . . Stahl—Kappa Delta Pi, Historical Society, Alpha Phi Sigma, Cardinal Key, Student Council, Modern Literature Club
Velda Linder . . . Kirksville—Alpha Sigma Alpha, A.C.E.
Katharine Lineberry . . . Brookfield—Ellen H. Richards Club, W. A. A.
Martha McDuffee . . . Kirksville—Pan Hellenic Council, Cardinal Key, Ellen H. Richards Club, Pi Kappa Delta, Kappa Delta Pi, Alpha Phi Sigma
Marian Meehan . . . Milan, Missouri
Leanna Moore . . . Kirksville—W.A.A. Student Council
Jane Pherigo . . . Pollock—Modern Literature Club, A.C.E.
Erma Rieger . . . Kirksville—Alpha Sigma Alpha, Alpha Phi Sigma, Cardinal Key, Kappa Delta Pi, Romance Language Club, Modern Literature Club, Who's Who
Bob Rufener . . . Kirksville—Sigma Tau Gamma, Student Council, Aeolian Club, Interfraternity Council
Margaret Ruhwedel . . . Foristell—Sigma Sigma Sigma, A.C.E., Band, Chorus
Berenice Schott . . . Kirksville—Delta Sigma Epsilon, Aeolian Club
Elmer E. Sharpe . . . Hunnewell—Phi Sigma Epsilon, Student Council, Interfraternity Council, Index Staff, Echo Staff, Who's Who
Ruth Siegrist . . . Meadville—Alpha Phi Sigma, Pi Omega Pi, W.A.A.
Fred Smith . . . Gorin—Sigma Tau Gamma, Student Council, Reader's Round Table, Modern Literature Club
Elizabeth Spindler . . . Wyaconda—Historical Society, Modern Literature Club, Delta Sigma Epsilon, Cardinal Key
Eldon Sterne . . . Brunswick, Missouri
Sydney Sterrett . . . Lancaster—Historical Society, Sigma Tau Gamma, Student Council
Berenice Stoops . . . Sullivan—Kappa Delta Pi, Sigma Sigma Sigma, W.A.A.
Martha Thoeke . . . Kirksville—Sigma Sigma Sigma, Alpha Phi Sigma, Cardinal Key, Pan Hellenic Council, Kappa Delta Pi, Aeolian Club
Calista Thomas . . . New Cambria—Alpha Phi Sigma, Pi Kappa Delta, Kappa Delta Pi, Pi Omega Pi, Cardinal Key, Who's Who
Virginia Ward . . . Scotts Bluff, Nebr.—Delta Sigma Epsilon
Sybil Whitton . . . Kirksville—Ellen H. Richards Club
Virginia Winton . . . Centerville, Ia.—Historical Society, Modern Literature Club, Pi Kappa Sigma, W.A.A.
Lois Drennan . . . Kirksville—Kappa Delta Pi, Cardinal Key, Alpha Phi Sigma, Sigma Sigma Sigma, Aeolian Club





JUNIORS

Doris Almeling	Margaret Armstrong	Ruth Barrett	Lois Bentley	Erma Brookhart	Betty Drakes	Mary Eiffert
-------------------	-----------------------	-----------------	-----------------	-------------------	-----------------	-----------------

Bertha M. Ferguson	Bernadean Fleshman	John Fox	Helen Galloway	Charlotte Haley	Billie Hall	Marjorie Kanouse
-----------------------	-----------------------	-------------	-------------------	--------------------	----------------	---------------------

Merle Kimball	Mary V. Martin	Iris Mittendorf	Mary M. O'Connor	Barbara Primm	Dorothy Sharp	Margaret Taylor
------------------	-------------------	--------------------	---------------------	------------------	------------------	--------------------

Mary E. Thurman	Joyce Wasson	Helen J. Williams
--------------------	-----------------	----------------------

Maurine
Turner



SOPHOMORES

Mildred Akers	Marian Anderson	Anna K. Bratton	Doris Brennecke	Bob Collop	Nancy Cox	Frances Davis
------------------	--------------------	--------------------	--------------------	---------------	--------------	------------------

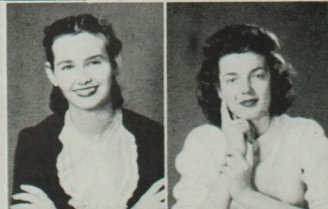
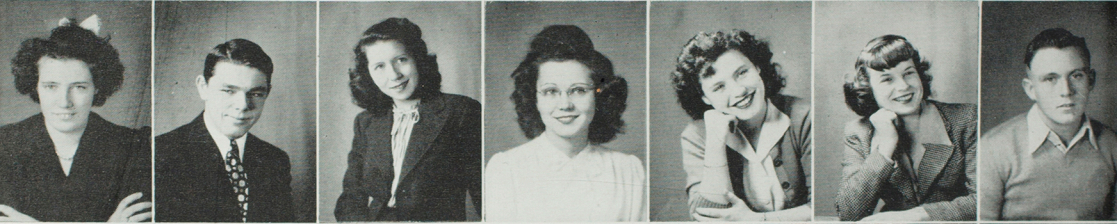
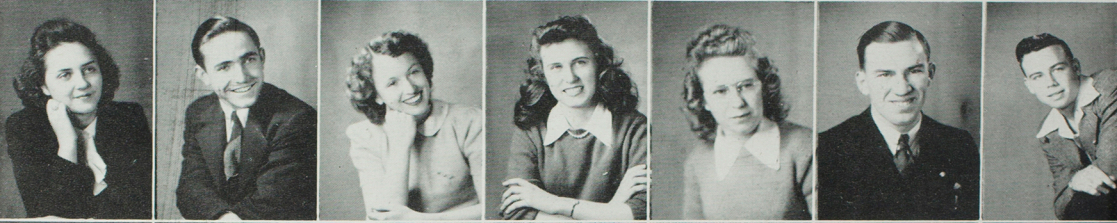
Ethlyn Dieffenbach	Gloria Duncan	Wilma Epperson	Jerry Hunter	Marjorie Kaufman	Wilma Kemp	Connie Kirby
-----------------------	------------------	-------------------	-----------------	---------------------	---------------	-----------------

Erleen Lillard	Robert Love	Carolyn Magruder	La Verne Miley	Irmogene Mueller	Robert Northcraft	Mary Northcutt
-------------------	----------------	---------------------	-------------------	---------------------	----------------------	-------------------

Frances Perkins	Elaine Rash	Doris Reid	Martha Reynolds	Mary E. Rice	Martha Rudasill	Mary Ruhwedel
--------------------	----------------	---------------	--------------------	-----------------	--------------------	------------------

Mary E. Shutts	Betty Smith	Peggy Smith	Julianne Stryker	Wilma Terry	Calvin Theiss	Carol Williams
-------------------	----------------	----------------	---------------------	----------------	------------------	-------------------

Marjorie M.
Williams



FRESHMEN

Betty	Mary	Delbert	Corwin	Betty	Barbara	Lola
Beck	Blodgett	Boley	Bowen	Bragg	Brubaker	Bushnell

Karalee	K. D.	Roberta	Dawn	Mildred	Claude	Billy
Campbell	Cannaday	Clare	Cleveland	Cragg	Davidson	Davis

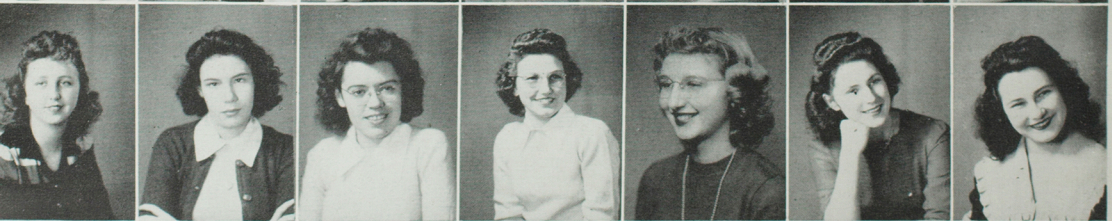
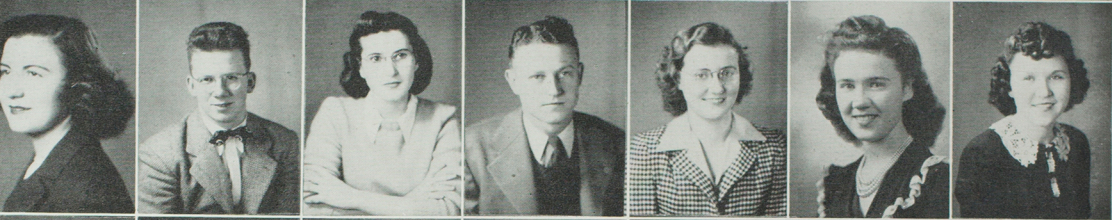
Leota	Jerald	Elaine	Deloris	Doris	Gladys	Donald
Dixon	Dodson	Eggert	Fairchild	Fisher	France	Funk

Violet	Barbara	Loretta	Betty	Audrey	Carolyn	Elizabeth
Gilbert	Gillum	Goodwin	Griffith	Grod	Hamilton	Hamilton

Hubert	Anneta	Willis	Martha	Eugene	Ralph	Sam
Harrett	Henderson	Hoewing	Holbert	Horn	Hueston	Johnson

Frances	Layton	Ruth	Enid	Bill	Viva Sue	Mary
Kaup	Kimmel	Koch	Koffenberger	Kutzner	Lett	Lierly

Johnnie	Gladys
Loft	Long



FRESHMEN

Ethel McCabe	Doris McClanahan	Ella McCollum	Katherine McSorley	Louise Mathews	Annabelle Medlin	Betty Nixon
-----------------	---------------------	------------------	-----------------------	-------------------	---------------------	----------------

Louise O'Reilly	Dean Osborn	Mona Overton	John Patrick	Mary Phillips	Ruth Eloise Phillips	Nellie Lee Poe
--------------------	----------------	-----------------	-----------------	------------------	-------------------------	-------------------

Margaret Quinn	Mary Quinn	Dixie Reid	Betty Rinehart	Mary Rouner	Dorothy Saar	James Salter
-------------------	---------------	---------------	-------------------	----------------	-----------------	-----------------

Bill Scearce	Marjorie Schoneboom	Betty Slaughter	Billie Slaughter	Clara Smith	Elenor Smith	Mary Alice Smith
-----------------	------------------------	--------------------	---------------------	----------------	-----------------	---------------------

Betty Stinson	Doris Stuart	Dorothy Stuart	Irma Thomas	Jolene Underhill	Betty Van Laningham	Irma Walls
------------------	-----------------	-------------------	----------------	---------------------	------------------------	---------------

Edward Wellman	Carol West	James White	Margaret Whittom	Betty Wilson	Ferne Woods	Janet Workman
-------------------	---------------	----------------	---------------------	-----------------	----------------	------------------

Johanna
Zeigel

Once rushed — forever rushing.
That's what happened to all who
joined a sorority or fraternity this
season. Parties for new members, din-
ners for alumni, never a dull moment.
And as a side line everyone entered
at least two professional organizations
just to complicate matters. It's hard to
tell whether we worked more for the
organizations or in the class room.

Organizations



Row 1: Smith, Treasurer; Moore, Secretary; Sterrett; Fahrner, President; La Frenz; Sharpe
 Row 2: Eifert, O'Connor, Vice-President; Cooley, B. Moore, Drakes, Hunter, Prof. J. W. Heyd, Sponsor.
 Others: Woods, Dodson, Rufener

THE STUDENT COUNCIL

What busy organization sponsored the open houses, school shows, dances, teas, and the carnival enjoyed by our student body this year? Yes, it was our Student Council or legally, the Student Association of the Northeast Missouri State Teachers College.

The Student Council's activities began this fall with open houses . . . dancing, games, refreshments. School shows gave us a lift after a busy school day. At Christmas, much hurry and bustle ensued preparing for the formal Christmas dance. Decorating the auditorium was fun and lots of work too . . . the evergreen that didn't arrive . . . the false ceiling with its stars . . . the gorgeous tree in the center. Members of the Student Council formed a receiving line to welcome guests presented by Mrs. S. H. Ellison, dean of women.

After Christmas excitement, there were class teas to break the monotony. Remember the Valentine Tea given by the sophomores . . . a Christmas cactus centerpiece, heart-shaped red napkins, red candles . . . ?

On February 16 came the carnival. A bowling alley, various concessions, a rogue's gallery of faculty shots, and refreshments were among the evening's attractions. The highlights of the event were the stunts by various organizations with "Shakespearean Hash" enacted by members of the Modern Literature Club taking first place. With spring came the annual coronation dance and the crowning of our Echo queen.



Top Row: Miss Alma K. Zoller, Sponsor; Doris Almeling, Lois Bentley, Elaine Boise, Roberta Clare, Nancy Cox, Wilma Epperson, Virginia Fahrner

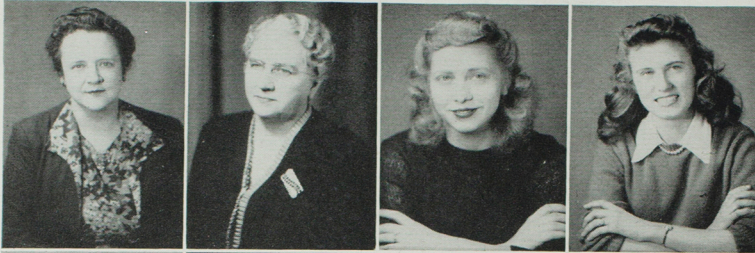
Second Row: Gladys France, Judy La Frenz, Velda Linder, Vice-President; Carolyn Magruder, Secretary; Annabelle Medlin, Iris Mittendorf, President; Leanna Moore, Doris Jean Reid, Registrar

Third Row: Erma Lee Rieger, Martha Reynolds, Mary Ellen Rice, Dorothy Sharp, Betty Van Laningham, Johanna Ziegler, Marjorie Brockway, Deloris Fairchild

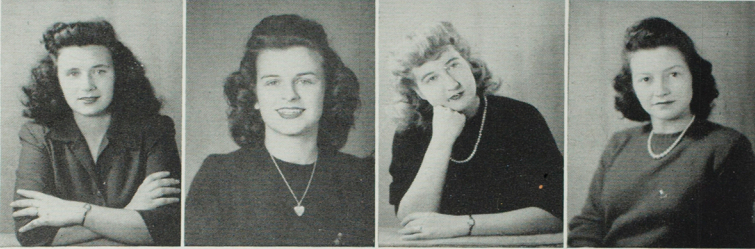
Fourth Row: Enid Koffenberger, Frances Perkins, Margaret Quinn, Mary Quinn, Dixie Reid, Betty Jane Rinehart, Mary Rouner, Marjorie Schoneboom, Ferne Woods

ALPHA SIGMA ALPHA

1944-45 found the Alphas back in their house across from the Stop 'n Shop . . . handy for those midnight lunches . . . hot cakes and sleepy eyes after delivering rush invitations . . . hay ride to the gypsy caravan camped for the night . . . fiddles . . . candlelight . . . dancing . . . fortunes by Ouiji . . . progressive brunch . . . twenty-five enthusiastic pledges . . . initiation by candlelight, party afterwards . . . Christmas with our tree and gifts at Martha Rinehart's . . . carols . . . Christmas poetry by Mr. Cornwell . . . "Respect to Actives" week with signature eggs wrapped in cotton . . . studying . . . Martha Ruth, our treasurer, joins the Waves . . . blood donors . . . books to the Merchant Marine library . . . a newsy letter from Barbara, our little British girl . . . four candidates for beauty queen . . . jaunty red caps . . . spring breakfast and picnic for graduating seniors . . . a year full of memories.

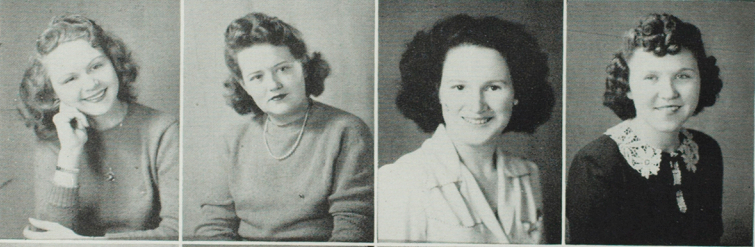


Mrs. Knobbs
Miss Simmons
Ruth Barrett
Dawn Cleveland



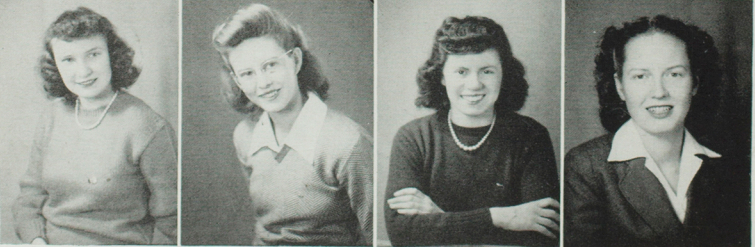
Viva Lee Cooley, Vice-President
Betty Ann Drakes, President
Gloria Duncan
Mary Eiffert

Betty Griffith
Marjorie Kanouse, Secretary
Louise Matthews
Nellie Lee Poe



Berenice Schott, Treasurer
Clara Smith
Elizabeth Spindler
Virginia Ward

Carol Williams
Helen Joyce Williams
Marjorie Mae Williams, Chaplain

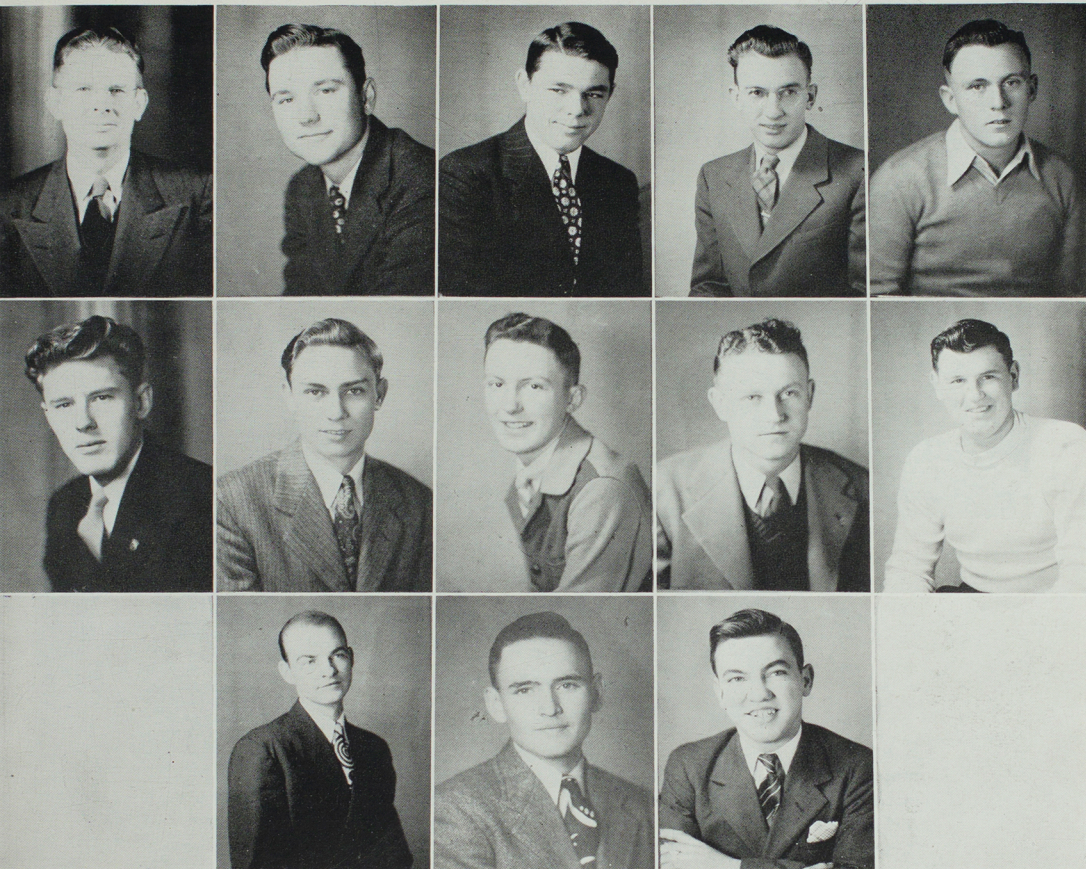


DELTA SIGMA EPSILON

Coffee at the home of the sponsor . . . rush party, shrouded lights, "Tequila" . . . the Christmas party . . . Miss Hilda Stein, the national organizer, came . . . Delta-Phi-Sig night club at carnival.



DELTA SIGMA EPSILON



Top Row: Mr. Otho Barnett, Sponsor; Bob Collop, Corresponding Secretary; Jerald Dodson, John Fox, Donald Funk
Second Row: Lowell Gudka, Ralph Hueston, LaVerne Miley, Secretary-treasurer; John Patrick, Bill Searce
Third Row: Elmer Sharpe, President; Billie Slaughter, Calvin Theiss, Vice-President

PHI SIGMA EPSILON

We're now "THE ACTIVE FRATERNITY" . . . things started slow last fall . . . got three new members . . . a rush smoker in the Barnett basement . . . seven new members . . . one man back from army . . . total thirteen . . . one man drafted . . . twelve left . . . these twelve and the Delta gals stole the Annual Carnival . . . night club a huge success . . . added a gold star to our service record, Ray Grinstead . . . went home in May to wait for September . . .



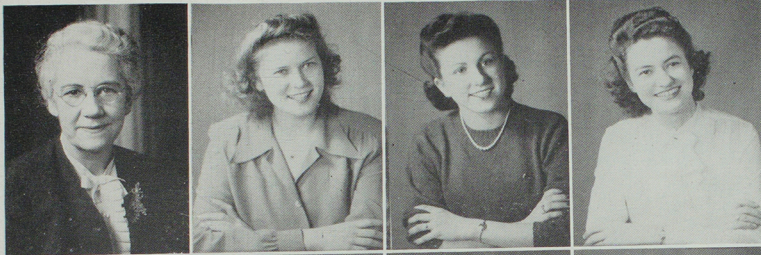
Miss Cornett, Sponsor
 Brennecke
 Holbert
 McDuffee

Mueller
 Wasson
 Whitton
 Winton

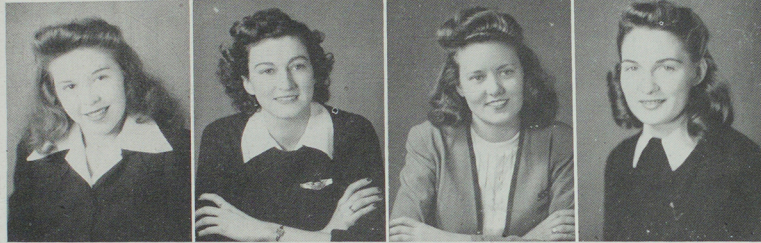
PI KAPPA SIGMA

Four members answered the roll call at the first meeting of Pi Kappa Sigma at the beginning of the fall quarter . . . During the year four new members were initiated . . . Despite a small membership the Pi Kaps had a strong, loyal group and enjoyed the year . . . A G.I. Jane party with the girls hiking to the party in true G.I. style and a Founder's Day banquet at the Traveler's followed by a theater party highlighted rush season . . . We'll all remember "Hell Week" . . . especially the pledges . . . wandering around with open umbrellas in the bright sunlight and carrying potted plants . . . Another theater party at the end of "Hell Week" . . . fun at our Christmas party where we exchanged gifts . . . A bang-up time this year with a group of grand girls.

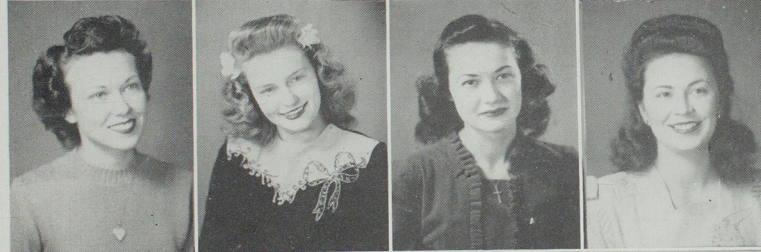
Doris Brennecke, Marshalltown, Iowa, Vice-President; Joyce Jibben Wasson, Kirksville, Secretary; Martha McDuffee, Kirksville, Treasurer; Irmogene Mueller, Hannibal, Corresponding Secretary; Martha Lou Holbert, Ewing; Virginia Winton, Centerville, Iowa; Margaret Whitton, Kirksville; La Vera Motter, Novinger, President. Sponsor: Miss Bracy V. Cornett.



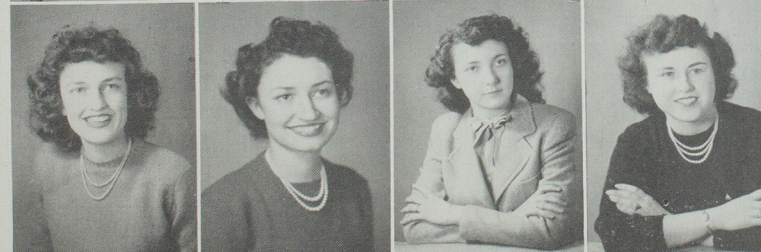
Miss Magee, Sponsor
 Marian Anderson
 Mildred Cornwell
 Doris Davies



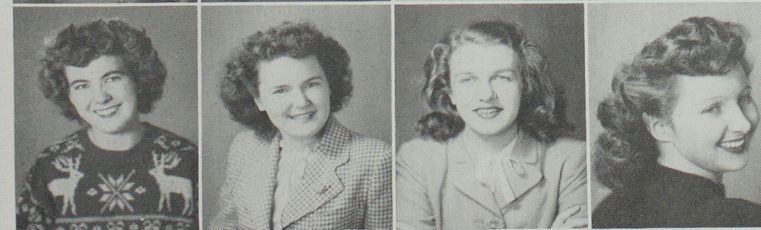
Beth Dougherty, Rec. Secretary
 Lois Drennan
 Charlotte Haley
 Jerry Hunter



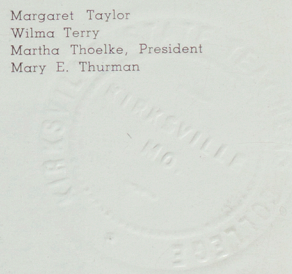
Louise Lansdale
 Mary V. Martin, Treasurer
 Mary M. O'Connor, Vice-President
 Elaine Rash



Margaret Ruhwedel, Cor. Secretary
 Mary F. Ruhwedel
 Berenice Stoops
 Julianne Stryker, Sentinel



Margaret Taylor
 Wilma Terry
 Martha Thoeke, President
 Mary E. Thurman



Banquet at the Masonic Temple . . . twenty new pledges . . . Christmas Party . . . A novel "want-ad" party . . . birthday parties . . . weddings and more weddings . . . Founder's Day tea . . . chapter study . . . social service work . . . mock graduation at carnival . . . came spring, more parties, and graduation . . . another successful year . . .

SIGMA SIGMA SIGMA



Mr. Karl Webb, Sponsor; K. D. Cannaday, Bob Northcraft, Bob Rufener, Vice-President; Fred Smith, President; Sydney Sterrett

SIGMA TAU GAMMA

The Beta Chapter of Sigma Tau Gamma began its fifty-third year with four students and one alumnus participating. They gave their annual rush banquet at the Traveler's Hotel. The students pledged Sig Tau and a supper in their honor was given at Santen's Cafe.

The organization gave a Forty-niner dance on the campus and a smoker at the home of their faculty sponsor, Prof. Karl Webb. One pledge was taken in the winter quarter, but before he could become active he was called to service.

The fraternity lost several members to the armed services and one member dropped out of school to teach in the Goring High School. Our one pledge is a wearer of the Purple Heart badge of the U. S. government.

The Sigma Tau, although small in membership this year, is proud of both its past and present accomplishments. Taus have had their share of victories in class elections. They have enjoyed splendid fellowship and spirit of cooperation both in their weekly meeting and in their campus activities. On carnival night, they presented "The Aight of It".

We have been saddened by the death of former members in the armed service: Chellis White of Kirksville; Howard McVey of Monmouth, Illinois; C. B. Attebury of Kirksville, and George Johnson of Queen City.

BAND



- Row 1:** Eggert, Griffith, Whittom, Underhill, Ruhwedel, Kaufman, Reynolds.
Row 2: Dodson, Webb, Hamilton, Rash, Rufener, Koffenberger, Hanes.
Row 3: Stinson, Boley, Thurman, Williams, Schott.
Row 4: Mr. Webb, director; Handley, Greer, Bratton.

AEOLIAN CLUB



- Row 1:** Kaufman, Koffenberger, Underhill, Ruhwedel, Webb, Thurman.
Row 2: Mr. Webb, sponsor; Whittom, Ruhwedel, Reynolds, Hanes, Ward, Lansdale, Rufener, President.
Row 3: Eggert, Anderson, Rash, Stinson, Gilbert, Schott, Magruder.



ALPHA PHI SIGMA

Row 1: Fahrner, Thomas, Phillips, Sharp, Spindler, Primm, Mr. Richardson, Sponsor

Row 2: Drakes, Secretary; Cooley, Jones, McDuffee, Mittendorf, Cornwell, Hunter, Galloway.

Row 3: Moore, Siegrist, Miley, Treasurer.



ART CLUB

Row 1: Miss Straight, O'Connor, Vice-President, Medlin, Dawdy, President; Harvey, Wasson.

Row 2: Phillips, Miss Cornett, Sponsor; Dougherty, Secretary-treasurer



A. C. E.

Row 1: Miss Whitson, Sponsor; Rudwehel, Secretary; Dougherty, Treasurer; Linder, Smith, Brennecke, Trifilette

Row 2: Perkins, Diefenbach, Ameling, Vice-President; Bentley, President; Reitz, Kinball, Akers



CARDINAL KEY

Row 1: Eifert, Primm, Thomas, President; Fahrner, Drakes, Brockway, La Frenz

Row 2: Miss Slemons, Sponsor; Galloway, Secretary; Cornwell, Mittendorf, Jones, Fleshman, Miss Wade, Sponsor

Row 3: Dawdy, Spindler, McDuffee, Vice-President.

Others: Davies, Treasurer; Rieger, Drennan, Thoeke, Ameling, Bentley, Schott

ALPHA PHI SIGMA

Alpha Phi Sigma is an honorary organization on the campus and can boast many new members this year. A lot of things have happened—from a speech on Mexico by Mrs. Sharp to burned cocoa by (?)—but we have had fun regardless.

A lot of credit for the organization goes to Mr. Richardson, our sponsor. He is a nice fellow to know. Our president is Erma Lee Rieger.

Hope for next year . . . a bigger and better organization . . . and more men!

ART CLUB

Boasting of some fifteen members these "artists" never miss their Monday afternoon tea . . . current art news . . . enlightening exhibitions . . . a jolly picnic at Brashear Park . . . Miss Straight's rendition of her summers in Boulder . . . Mrs. McCarthy's travels and sculpture . . . Miss Cornett's lovely Christmas dinner . . . initiation . . . silly-ettes at the carnival . . . these episodes are worthy of an artist's recall . . . creative enthusiasm and social interest lift the spirits of these personalities seeking a better life through art channels.

A. C. E.

The Association for Childhood Education has gone "all out 100 per cent" this year, having as members every student in its field. It has as its initial purpose the raising of standards of the professional training of teachers and leaders in the field of education of young children.

The project for the year was taking care of small children during P.T.A. meetings . . . highlights . . . a baby picture booth of faculty at the all school carnival . . . programs given by Miss Fawcett, Dorothy Sharp, Mrs. Estes, Ruth Straight . . . Christmas tea at Miss Whitson's home.

CARDINAL KEY

This ends another year of trying to be of service. As usual we granted our two scholarships. A Christmas box was sent to the boys in the Veteran's Hospital at Springfield. Now we are starting to collect "Funnies" to be made into scrapbooks for these veterans. Cardinal Key girls made a personal solicitation of all the students on the campus in the Red Cross drive and were in charge of the annual Citizenship Day program.

ELLEN H. RICHARDS CLUB

Ellen H. Richards Club hit the top again this year, with the largest number of graduating seniors of any department . . . a very outstanding year with ideas for teas and programs fairly popping from monthly committees . . . traditional Christmas party at Miss MaGee's home . . . Miss MaGee working like fury to finish the red waffle cloth tablecloth for Valentine tea . . . the Art club coming to the tea . . . needles, thread, and scissors busy on Easter corsages . . . "Ima Grouch's Funeral" creating many laughs at the school carnival . . . contributions to the Red Cross.

HISTORICAL SOCIETY

Discussion groups with assembly speakers from other lands . . . a tea at the Angus home . . . the annual banquet in April, highlight of the year . . . Although the student membership is small, and the president elected last year left early to teach, the loyalty of the faculty of the social science division has helped us to make it an interesting year.

INDEX

Hurry, hurry . . . get on your beat . . . scurry, scurry . . . make with the feet . . . can't play around all the time . . . deadline to meet . . . cover this story while it is hot . . . who knows—you might make the Tribune or Globe-Democrat one of these days . . . read proof this afternoon at one . . . write a snappy lead for this . . . something that will make the readers sit up and take notice . . . using 24 point Bodoni supply a two-column head for this sizzler . . . no make it a streamer . . . a tea at the home of Miss Agnes Slemons really gave us that needed pep to write some more masterpieces . . . a very busy year but lots of fun . . .

INTER-FRATERNITY COUNCIL

The Inter-fraternity Council is an intermediary board for the purpose of fostering friendly relations between the two fraternities on the campus. The president and one other member of each fraternity are members of the council. Beside these four there are the sponsors of each fraternity and the faculty adviser, who must not be an alumnus of either organization. Dr. John W. Hollenbach is the Inter-fraternity Council adviser and presides at the monthly meetings where rules for rushing and pledging are discussed.

ELLEN H. RICHARDS CLUB

Row 1: Cornwell, O'Reilly, Mrs. Buckingham, Sponsor; Craig, McCollum, Chambers, Boise

Row 2: Rudasill, Halterman, Barrett, Lineberry, McDuffee, Fleshman

Row 3: West, Anderson, Jones, Treasurer.

Others: Reid, President; Hail, Secretary; Meehan, Lansdale



HISTORICAL SOCIETY

Row 1: Williams, Dawdy, Spindler, President; Winton, Secretary-treasurer

Row 2: Sterrett, Mrs. Knobbs, Mitendorf, Mr. Angus, Sponsor



INDEX

Row 1: Kirby, Slaughter, Lierly, McClanahan, Cox

Row 2: Sharpe, Willey, Miss Slemmons, St. Clair, Roy, Dawdy, Fox



INTER-FRATERNITY COUNCIL

Sharpe, Gudka, Mr. Barnett, Dr. Hollenbach, Sponsor; Mr. Webb, Smith, Rufener.





KAPPA DELTA PI

- Row 1:** Thomas, President; Drakes, La Frenz, Fleshman, Fahrner
- Row 2:** Cornwell, Primm, Eifert, Davies, Miss Beggs, Sponsor; Galloway, Secretary
- Row 3:** Mittendorf, McDuffee, Hamlett, Thoeke, Jones, Treasurer.
- Others:** Drennan, Thoeke, Almeling



MODERN LITERATURE CLUB

- Row 1:** Stuart, Stuart, Reid, Dougherty, Spindler, Brookhart, Smith, Treasurer
- Row 2:** Primm, La Frenz, Ferguson, Taylor, Vice-President; Armstrong, Wasson
- Row 3:** Rudasill, Haley, President; Sterrett, Dr. Hollenbach, Sponsor; Pherigo, Smith, Akers, Secretary; Dawdy.



PANHELLENIC COUNCIL

- Row 1:** O'Connor, Cornwell, Mittendorf, Cooley, Drakes, La Frenz, Wasson
- Row 2:** McDuffee, Kanouse, Medlin



PI OMEGA PI

- Row 1:** Eifert, Thomas, President; Dr. Selby, Sponsor; Brockway, Drakes, Historian
- Row 2:** Mrs. Summers, Galloway, Mueller, Cooley, Secretary-treasurer; Siegrist, Miss Roberts

KAPPA DELTA PI

In connection with the Historical Society, we heard a number of assembly speakers discuss international issues. Our respective initiation services were preceded by an early morning breakfast and a supper. The stunt for the carnival had a truly intellectual setting. We assisted the Modern Literature Club in sponsoring the meetings on Creative Writing that were held in March.

MODERN LITERATURE CLUB

This club was organized on the campus in 1939 by Miss Beggs and a group of students who were especially interested in modern prose and poetry. Meetings with Dr. Hollenbach, the sponsor . . . book reviews . . . refreshments . . . author sketches . . . quizzes . . . prizes . . . booby prizes . . . small membership . . . lots of fun . . . and educational.

PANHELLENIC COUNCIL

Acting as the governing body of four sororities on the campus, Pan Hellenic supervises all the combined activities of these four .

Each sorority has three representatives in the council. The president of the various sororities take their turns in serving as Pan Hellenic officers, rotating each year. This year Betty Drakes, Delta Sigma Epsilon, served as president; La Vera Motter, Pi Kappa Sigma, vice president; Iris Mittendorf, Alpha Sigma Alpha, secretary; and Martha Thoeke, Sigma Sigma Sigma, treasurer.

This year, as in previous years, Pan Hellenic sponsored the banquet at which a scholarship cup was awarded to the sorority having the highest scholastic average.

PI OMEGA PI

Been a busy year doing work for the American Legion and fixing up our files for the chapter . . . initiation . . . wow! . . . some lecture programs . . . Dr. P. O. Selby, Miss Ruth Roberts, Mrs. Laura Summers, and Calista Thomas attended the national conference at Chicago during the Christmas vacation.

READER'S ROUND TABLE

The Reader's Round Table is an informal organization for those interested in reading or hearing poetry and prose. This year the members heard a program on local writers, which was presented by the language-literature department, listened to records by interpretive readers, joined College Players in a picnic, and gave choral readings. Janet Leslie presented a varied program for the group.

ROMANCE LANGUAGE CLUB

The Romance Language Club is composed of students who are studying or have studied either French or Spanish.

The business meetings are conducted in one of the two languages and a program is given by one of the groups. This year plays were given, a Spanish dance was presented, French songs were sung, and Spanish poetry was read.

Officers elected are as follows: Dorothy Sharp, president; Nancy Cox, Spanish vice-president; Erma Lee Rieger, French vice-president; Nancy Roy, French secretary; and Charlotte Haley, Spanish secretary.

Miss Nan E. Wade is sponsor.

W. A. A.

Activities galore and fun all year . . . wiener roast at the cabin on the Chariton . . . hay ride which ended in a moonlight hike to the lake . . . social dance class for beginners . . . volleyball tournament won by graduates . . . annual hick party . . . Christmas dinner highlighted the year . . . chili supper and then a bowling party (a few spares and still less strikes) . . . basketball tournament won by Quinn's team . . . rummage sale (what work!) . . . badminton tournament (birds fly and rackets swing) . . . play night and square dances assisted by W. A. A. . . . baseball . . . hamburger fry at Brashear Park . . . good food and harmonious singing . . . swell bunch.

DEBATE

Mr. Collin's first all-girl debate squad . . . debaters poring over countless musty volumes looking for mere mention of compulsory arbitration in labor disputes by governmental legislation . . . Result: Judy La Frenz and Barbara Primm winning Regents Award in competition with Fern Woods and Evelyn Phillips . . . Mr. Collins leaving in December to take part in "Dark of the Moon" . . . Mr. Cornwell pinch-hitting as debate sponsor . . . Tragedy of the year: all debate tournaments cancelled by ruling of the Office of Defense Transportation.

READER'S ROUND TABLE

Smith, President; Primm, La Frenz, Mr. Avison, France, Phillips, O'Connor, Sterrett.

Others: Martin, Vice-President; Rash, Medlin



ROMANCE LANGUAGE CLUB

Row 1: Roy, French Secretary; Fahrner, France, Woods, Miss Wade, Mittendorf

Row 2: Eggert, Kirby, Sharp, President.

Others: Haley, Spanish Secretary; Cox, Spanish Vice-President; Rieger, French, Vice-President



W. A. A.

Row 1: Lineberry, O'Reilly, Anderson

Row 2: Blodgett, Siegrist, Duncan, Barrett, Slaughter

Row 3: Hamilton, Kirby, Song Leader; Lierly, Moore, President; Quinn, Mrs. Estes, Sponsor; Brockway, Medlin

Row 4: Hunter, West, Recorder of Points; Sharp, Vice-President; Primm, La Frenz, Phillips, Dougherty, Taylor, France

Others: Brennecke, Treasurer; Reid, Secretary; Perkins, Historian



DEBATE

Phillips, Thomas, La Frenz, Primm, Woods



Queens of beauty no doubt—but of
love that's a different story. Could be
we quarrelled a bit over which Jane
should reign.

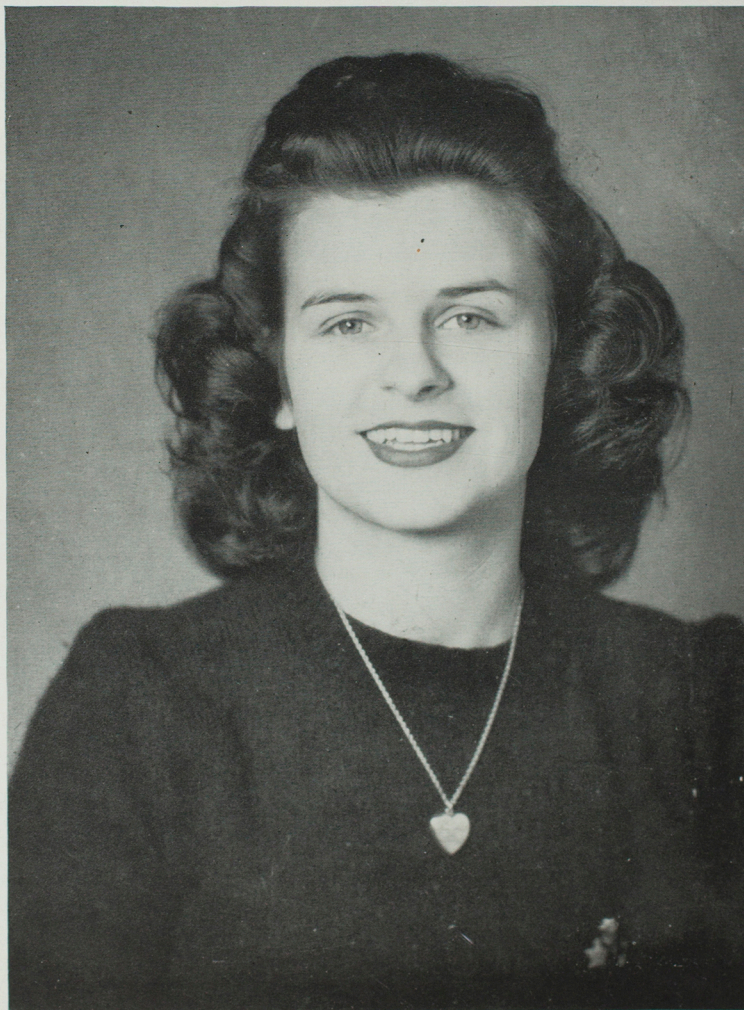
But the die is cast. Candidates were
elected, Drakes the queen selected,
and be it known none was rejected.

The Accent on Fun, as Seen in the

Features



ECHO QUEEN



Miss Betty Ann Drakes

INDIANAPOLIS ENGRAVING COMPANY
INCORPORATED

TWO HUNDRED AND TWENTY-TWO EAST OHIO STREET
SCHOOL PUBLICATION DEPARTMENT



February 26, 1945

Mr. Elmer E. Sharpe, Editor
The Echo
Northeast Missouri State Teachers College
Kirksville, Missouri

Dear Mr. Sharpe:

Here she is! Your 1945 Echo Queen, Miss Betty Ann Drakes. I appreciate very much the faith you have placed in our Art Staff in asking that we make the selection.

The winner was chosen by three artists and myself but not until after much discussion regarding the outstanding beauty of the candidates. We know they were all beautiful and it was indeed difficult to make the final selection.

I sincerely hope that our choice will meet with your approval as well as that of the campus.

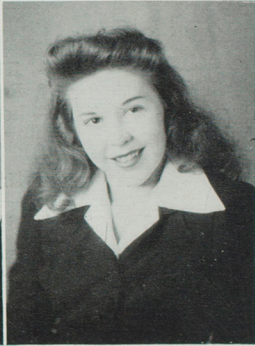
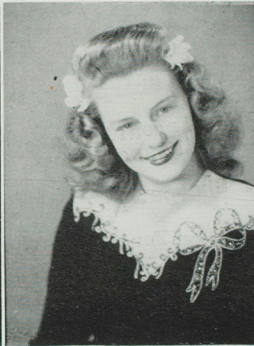
Sincerely yours,

INDIANAPOLIS ENGRAVING COMPANY, Inc.,
Robert A. Loewer

Art Director,
College Annual Division.

RALoewer h

RECEIVED



Enid Koffenberger
Freshman queen

Marian Lee Anderson
Sophomore queen

Lois Bentley
Junior queen

Elaine Boise
Senior queen

Doris McClanahan
Freshman queen

Doris Jean Reid
Sophomore queen

Mary Violet Martin
Junior queen

Beth Dougherty
Senior queen

CLASS QUEENS



Row 1: Virginia Fahrner, Calista Thomas, Iris Mittendorf, Lois Bentley, Helen Galloway, Judy La Frenz, Betty Drakes

Row 2: Martha McDuffee, Elmer Sharpe

Others: Mary Ethel Dawdy, Maxine Mitchell, Erma Lee Rieger, Martha Dee Thoeke, Lois Drennan

WHO'S WHO

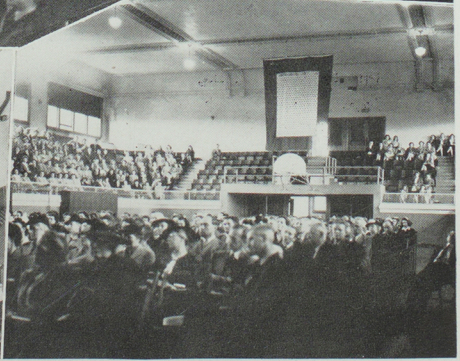
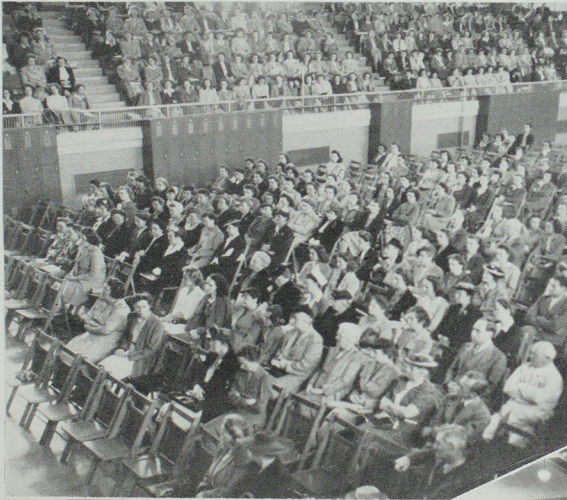
There are 569 colleges and universities who select students to be listed in "Who's Who Among Students in American Universities and Colleges". These people are chosen because of their character, scholarship, leadership in extra-curricular activities and the possibility of future usefulness to business and society. They represent a cross section of the most outstanding personalities of America in undergraduate life today. The main purpose of the publication is to bring the names of these outstanding students before the business world and others who annually recruit students.



Some more priceless gold stars
were part of our war effort this year.
The price we pay goes higher and
higher.

Eight veterans returned to the
campus to begin work anew on their
degrees. Our pride in our service men
and women begs description.

Service Section





IN MEMORIAM



To the memory of these former students and alumni whose loss came this year, we dedicate this page of the 1945 Echo:

First Lieutenant William Madden Baker, graduate in 1941; killed in explosion of B-29 near Shreveport, La., April 12, 1945.

Lieutenant Jack Blanton, a former student, killed in action over France on June 2, 1944.

T/Sgt. Edwin Burkhardt, a former student, killed in Belgium, January 15, 1945.

E. M. 2/c Glenn Estal Crandall, a former student, missing in action, September 12, 1944.

P.F.C. William S. Davis, a former student, killed in the European theatre, December, 1944.

Lieutenant Raymond S. Grinstead, a former student, killed in action, February 13 or 15, 1945

Lieutenant William J. D. Hopkins, a former student, missing in action over Germany, April 11, 1944.

Sgt. Byron Earl King, a former student, killed over Germany, June 21, 1944.

Captain Norman Victor Lane, a graduate of 1940; killed in action in Germany, March 16, 1945.

Lieutenant Harris Roy Meadows, a former student, killed in action over Austria, April, 1944.

Sgt. Howard McVey, a former student, killed in the European theatre, December, 1944.

S/Sgt. J. Thomas Rieger, a former student, killed in the European theatre, December, 1944.

Captain Harold S. Swingler, a former student, killed in action in France, June 7, 1944.

T/Sgt. Max E. Turner, a former student, killed, July 28, 1944.

S 1/C Chellis White, a graduate of 1942, killed while on Coast Guard Duty near Portsmouth, New Hampshire, November, 1944.

And other persons of whose loss we may not have been informed.

IN SERVICE



Lt. (s. g.) David A. Pierce

Adams, Armon
 Adams, Carol Dean
 Adams, Darrell
 Adams, H. Berle
 Adams, Lyle Marston
 Adams, Velma Louise
 Adams, William Henry
 Aeschleman, Ralph Henry
 Akers, Paul C.
 Albertson, Don
 Albright, Gail
 Albright, Wilbur Donald
 Allen, Morriss
 Allen, Ross C.
 Allen, Roy B.
 Allen, Walker
 Anderson, Frederick Irving
 Anderson, Hazen V.
 Applegate, Kenneth H.
 Arthand, Charles Claybrook
 Axt, Donald Latrelle
 Ayers, Joe

Bailey, James Kenneth
 Bailey, Joe
 Bailey, Lilburn E.
 Baker, Carl E.
 Baker, James Edwin
 Baker, Kenneth Dean
 Baker, Lee Edward
 Bamburg, Harold B.
 Bammon, Henry Adolph
 Bane, Raymond C.
 Banks, Wendell Oris
 Barb, Anette
 Barclay, Maxwell
 Barrett, Phil W.
 Bauerichter, Earl

Baum, Millan Francis
 Bauman, Howard James
 Beane, Joe Weston
 Beard, Walter C.
 Bedell, Ralph
 Bengston, Roger
 Bennett, Marana
 Benny, Joe
 Berry, Richard Dale
 Bethell, Charles Franklin
 Biggerstaff, John
 Bigsby, Frank L.
 Bigsby, William A.
 Bissell, Paul Vernon
 Bittiker, Virgil A.
 Blackhurst, Stephen E.
 Blaine, Mayhue D.
 Blanchard, Jay Lyle
 Blankenhorn, Glenn D.
 Bogener, Howard
 Bohmback, Clifford R.
 Bohon, Charles K.
 Bohon, Norton Imbler
 Bohon, Russell Boudurant
 Bohon, Stanley
 Boltzell, W. C.
 Bondurant, John Richard
 Bondurant, William George
 Bonta, Seaton Alfred
 Botts, Oral L.
 Boucher, Earl H.
 Boucher, Henry Mason
 Boucher, Horace
 Boucher, Roy
 Boucher, Roy
 Bradley, Hollis J.
 Bragg, Frank
 Bragg, William Gilbert
 Bragg, William
 Branstetter, Harold Dale

Branstetter, Robert Deane
 Brantly, Calvin
 Brassfield, Arthur J.
 Bray, Willis Joseph, Jr.
 Brightwell, Robert Henry
 Brockman, Vernon W.
 Brown, Claude L.
 Brown, Gerald L.
 Brown, Kenneth L.
 Brown, R. B.
 Browning, Bernard
 Browning, Everett
 Bruce, Lloyd M.
 Brumagin, Wendell Royce
 Buckley, Joe
 Buckman, Albert Douglas
 Buford, Joe
 Bunch, Alvin C.
 Bunch, Ishmael Lee
 Burch, Roland E.
 Burdman, Bernard
 Burdman, Louis
 Burk, John Selby
 Burkel, Louis A.
 Burris, Harold U.
 Burton, Clyde W.
 Byars, Arthur Lynn
 Bybee, Elmer
 Byram, Glen T.

Cable, LaVerne Troy
 Calkins, Robert
 Cammack, R. R.
 Campbell, Arthur D.
 Campbell, Herbert
 Campbell, John Milton
 Campbell, Wm. H.
 Cannaday, K. D.
 Canahan, Ross C.

Carter, Frank W.
 Cartmill, Ruth
 Casady, Cleo Pearly
 Casady, Pearly Richard
 Casey, Charles L.
 Casey, Ralph Nelson
 Cassady, Albert L.
 Cassity, Elton Edward
 Cavett, Sam S.
 Chadwick, Norman Langley
 Chamberlain, Harold W.
 Chambers, Clifford Couch
 Chambers, Kenneth
 Chambers, Willard
 Chappell, Bess (Mrs. Clagg)
 Clark, John Robert
 Clem, Holland Dale
 Cleeton, Russell
 Closson, Albert Frank
 Cloyd, Gordon
 Cloyd, Marshall
 Cochran, Edward Dale
 Cochran, Kenneth
 Cochran, Randall Terry
 Cochran, Victor Edward
 Cockrill, David James
 Coleman, Zerva
 Collett, Ira Lee
 Collins, LaFayette
 Collins, Leonard
 Collins, Lloyd
 Colyer, Kenneth Marshall
 Conkin, Robert A.
 Connell, John F.
 Conner, Clarence Melvin
 Conner, William Z.
 Conway, Agatha
 Conwell, John Odey
 Cook, Harold
 Cook, John



IN SERVICE

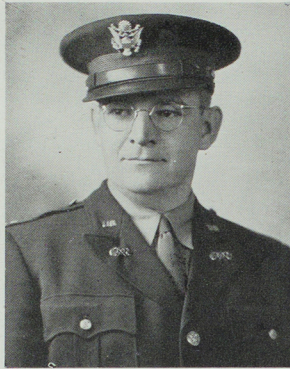


Yeoman Charles Kauzlarich

- | | | | |
|-----------------------------|------------------------|-------------------------------|--------------------------|
| Cooper, Howard Paul | Deskin, William | Elson, Richard Albright | Freeland, Nyle |
| Cornelius, William Paul | De Vault, Karl | Emerson, Eva Ruth | Friedmeyer, George |
| Cornwell, Clifton, Jr. | DeVinny, Paul V. | English, Milton Tate | Friesz, William |
| Cosby, Clifford | DeVore, Gerald F. | Enlow, Otis R. | Fulkerson, Clyde |
| Cottrell, John R. | Devore, J. Allen | Enright, Thomas Michal Joseph | Funk, Vincent Dean |
| Coughlin, John George | DeVore, Raymond Eugene | Epperson, James Muney | Gaffner, James |
| Coughlin, Paul Edward | Dewey, Gilbert | Epperson, James Paul | Galfond, Morris |
| Courtney, John E. | Dickerson, John Robert | Erickson, Eugene Augustus | Gardner, Kenneth Leroy |
| Courtney, Vay | Diehl, Elmer Cleo | Estes, A. T. | Gardner, Wayne C. |
| Cowles, Howard L. | Dimmitt, Melvin | Evans, Glen Harold | Garlock, Leon |
| Cox, Harold Davis | Dirksmeyer, Paul | Evans, Arthur Melvin | Garnett, Jack Vickers |
| Cozad, Annie (Mrs. Bronson) | Dixon, Creel | Evans, Paul | Garrison, Lloyd Lee |
| Crabtree, J. W. | Dodson, Clayton D. | Evans, Terrell | Gash, Dean |
| Craig, Everett | Dodson, Robert Roy | Everett, Sammie | Gashwiler, Francis C. |
| Craver, Claud R. | Donaldson, Robert A. | Fagan, Clifford L. | Gashwiler, Robert N. |
| Crawford, Frank | Dorsey, Raymond Wayne | Farmer, Wallace | Gehrke, Eugene David |
| Crawford, Keneth | Dougherty, James J. | Farson, Kenneth Earl | Gibbs, Charles M. |
| Cripps, James | Dowell, Laverne | Faurot, Fred | Gibson, Rankin |
| Crist, Dwight Edwin | Drane, Robert Russell | Faurot, Jay Lyle | Gibson, Robert Douglas |
| Crist, Robert | Draper, Dallas | Felker, James K. | Gibson, Roger F. |
| Crow, Robert | Drennan, Jack LeMoynes | Fellin, Cornelius | Gilliland, Herbert |
| Current, Darl | Drennan, Allin, Jr. | Fields, Don Henry | Gleason, Kenneth |
| Curtis, Raymond Wiley | Dreyer, Lincoln | Fife, Max Leonard | Goldstein, Mark Leonard |
| Curry, John H. | Dufur, Harold Arthur | Finn, Charles | Gooch, Richard Lee |
| Custer, Richard | Dull, Joseph Delbert | Fisher, Carl T. | Goodding, Alan C. |
| Daniels, Geneva | Dunker, Richard Adam | Flesch, Joseph | Graham, Eugene Hays |
| Darrough, James B. | Dusco, Alfred | Fogle, Claude C. | Graham, Robert A. |
| Daugherty, Kenneth Allen | Eagle, Charles | Forrester, Melvin | Graham, Victor H. |
| Davies, David Walter, Jr. | Eastman, J. L. | Foster, Clifford | Graham, Walker Anderson |
| Davis, George A. | Edwards, Bill | Foster, Leonard | Grandstaff, Earl C. |
| Davis, Hilliard | Edwards, Clifton C. | Fountain, Melvin F. | Grassle, Nancy Sue |
| Davis, William Dale | Eger, Maurice | Fountain, William Henry | Green, Charles B. |
| DeCanniere, Harold | Eger, Robert Louis | Fowler, Sina Faye | Green, Kermit Raymond |
| Deck, Calvin | Eiffert, James Ernest | Fox, Leon Guy | Green, Lee M. |
| Decker, Damon Paul | Eiken, Malcolm | Fox, Richard M. | Greene, Myron |
| Decker, Harold | Elam, Robert Linwood | Fox, Walter William | Greene, Paul |
| Decker, Randall E. | Elliott, James Weldon | Francisco, Esther L. d.berg | Greenstreet, Oscar Cleo |
| De Coester, Richard J. | Elmore, Johnny | Franko, Kenneth | Gregory, Charles |
| Deierling, Frederick | Elsea, Ray | Freeland, Max Quentin | Gregory, Orville Charles |



IN SERVICE



Major Wray M. Rieger

Griffith, Everett Willis
 Griffith, James Lewis
 Griffiths, Robert H.
 Griggs, William H.
 Grindstaff, William E.
 Grossnickle, Gerald
 Grubb, Frances L.
 Gudka, Payton Wendell
 Gulick, John Carr
 Gurdekunst, Marvin C.
 Guthrie, Charles L.
 Guthrie, John W.
 Guy, Dorsey V.
 Guy, Homer R.

Hackward, Jennie Jo
 Haley, Kenneth Lee
 Hamilton, Eugene
 Hamm, George Edwin
 Hancock, John
 Handley, James R.
 Handley, Joe
 Handley, Louis William
 Hanna, Frank J.
 Hardesty, Paul
 Hardin, Wesley E.
 Hardy, Mary Elizabeth
 Harkey, George
 Harlan, Frank
 Harrington, John R.
 Harrison, Donald Elma
 Harrison, J. C.
 Harrison, Russell Glenn
 Harryman, Herman
 Hartford, Herbert H.
 Hartford, Winfield Edwin
 Hassler, Ira Edwin
 Hatfield, Ellison

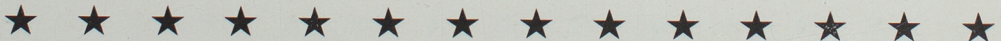
Hatfield, Newton Ray
 Hayden, Richard Carroll
 Hayes, Benjamin Esta
 Hayes, Victor Campbell
 Heaberlin, Paul
 Heaton, Jack R.
 Hedrick, Francis
 Heimer, Alice B.
 Henning, Paul, Jr.
 Hennings, Thomas C., Jr.
 Hentis, Norman David
 Herboth, Herman III
 Hermanson, John
 Herst, Austin Cole
 Heuman, Leslie
 Hewitt, Fenelon Dobyens, Jr.
 Heying, Everett L., Jr.
 Heying, Kenneth Dale
 Heyser, Bill
 Hill, Gloria
 Hines, Richard Clinton
 Hinton, Donald R.
 Hobbie, June E.
 Hobbie, Lester
 Hobbie, Wallace
 Hodges, William Wayne
 Holloway, Donald Elliott
 Holloway, Henry
 Holman, Charles R.
 Holmes, A. V., Jr.
 Hope, Elsie
 Hopewell, Kenneth
 Hopkins, Margaret
 Hopkins, William J. D.
 Horn, Andrew Jackson
 Horton, Edgar Darrell
 Horton, Wilford D.
 Hoskins, John Erlin
 Houser, Arthur M.
 Howard, Arthus

Howell, Robert Newland, Jr.
 Howerton, Bryce
 Hoyt, Otis Allen
 Hudson, Harold
 Hudson, Henry
 Hudson, Riley
 Huesmann, Ted
 Huesmann, Warren T.
 Huff, Arthur S.
 Hulen, Charles
 Hull, Robert
 Hutcherson, Olin Lee
 Hutton, Leo Y.

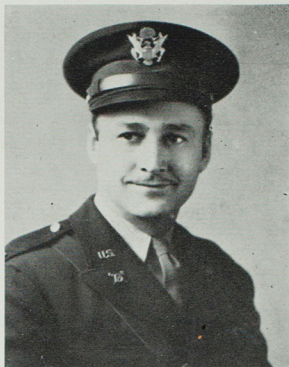
Ingerslew, Don
 Ingerslew, Ruth M.
 Ingraham, Gordon M.
 Israel, Ernest A.

Jacobs, Eldon
 Jamison, Mary Frances
 Jayne, Edward
 Jeffries, Charles Leo
 Jibben, Robert
 Johnson, Charley Lewis
 Johnson, Ernest L.
 Johnson, George Still
 Johnson, Irl
 Johnson, Olin
 Johnson, Mary S.
 Johnston, Charles Nickell
 Jonas, Harry
 Jones, Carl Robert
 Jones, Charles Kenneth
 Jones, Paul R.
 Jones, Ruth M.
 Jones, Marion
 Jones, Monroe S.
 Jones, R. T.
 Jones, Ralph William

Kachulis, William P.
 Katz, Samuel
 Kauzlarich, Charles
 Kauzlarich, John W.
 Kauzlarich, Victor A.
 Kelley, Leland W.
 Kelley, Phillip Russell
 Kelley, Walter Ralph
 Kellogg, Kenneth Oliver
 Kelly, Edward L.
 Kelly, Hugh
 Kelly, Monroe
 Kelly, Patrick E.
 Kelso, Paul
 Kester, Philip Allen
 Ketchum, Estal C.
 Ketchum, Hollis Monroe
 Kice, Elmer B.
 Kimbrell, Azalee
 Kincaid, Lester
 King, Boyd
 King, Gerald
 King, Hubert
 King, Ralph
 Kinkade, Christy Paul
 Kinkeade, Nina
 Kirby, William Woodside
 Kirchner, Raymond William
 Kirk, John Robert
 Kirk, Victor
 Kirkpatrick, A. Roy
 Klein, Leo F.
 Kob, Fred J.
 Kopfcr, Carroll
 Kornis, Richard
 Kuhn, James Arthur
 Kumm, Wayne G.
 Kurz, Kenneth Robert
 Logomarsino, Augustino



IN SERVICE



Major Robert L. McKinney

Lammers, Victor Leroy
 Landrum, Arthur
 Lane, Bert
 Laughlin, George Andrew
 Launer, Linden
 Lawson, Basil Edward
 Laylin, Marian
 Layne, Forrest William
 Leach, Harold Dean
 Leavitt, Bruce A.
 Lee, Wesley D.
 Leeper, C. L.
 Lehto, Leonard
 Leslie, D. A.
 Leslie, Richard Turner
 Lewis, Joe
 Levine, Wendell
 Lewis, Hillis W.
 Lewis, Quentin
 Light, Mitchell A.
 Link, Carl E.
 Lintner, Carl
 Llewellyn, William R.
 Lockett, George Robert
 Loft, Gerald LeRoy
 Loft, Harold Lee
 Logsdon, Dean
 Long, Robert Finley
 Longwith, Culver Wayland
 Looney, James Howell
 Lourderback, Walter Wayne
 Love, Robert Lee
 Lucas, Robert Lee
 Lucas, Stewart Gene
 Lucas, Keith
 Lucas, Walter Lee

Mabry, Bennett I.
 Mabry, Edgar Harrell

Mack, Mrs. Julia G.
 Mack, Orlo J.
 Maddox, Delbert E.
 Madorin, Henry, Jr.
 Maggart, Harley
 Mahoney, Ted Herman
 Maples, Gordon Sylvester
 Margreiter, John
 Marriott, Charles Edwin
 Martin, Donald Wayne
 Martin, Thomas
 Matthews, Virginia
 Mauck, Roby D.
 Maupin, J. C.
 Medhurst, Merle Sabre
 Meeks, Willard Ivan
 Meilicke, William Little
 Menze, Harold
 Meyer, Carl
 Meyer, Victor Wayne
 Meyers, Clyde
 Mileham, Richard E.
 Miles, Herbert
 Miles, Lloyd B.
 Miles, Robert E.
 Miller, Dale Wayne
 Miller, Eddie
 Miller, Gay
 Miller, John B.
 Miller, Keith Ellis
 Mills, Harold Kermit
 Mills, Horace, Jr.
 Mills, Johnny Earl
 Mills, John C.
 Mills, Robert
 Millsap, Max
 Minic, Euthetta Jean
 Minor, Carl
 Minor, Beverly Leon
 Minor, Vernie

Minor, William Thomas
 Mitchell, Gordon
 Mitchell, Lee
 Mitchell, William Robert
 Moody, Hildreth
 Moore, Robert Leo
 Moore, William T.
 Moore, William L.
 Moorman, Richard
 Morgan, Denzil
 Morgan, Earl
 Morissy, James F.
 Morris, Dewey D.
 Morris, Henry John, Jr.
 Morrison, Stanton R.
 Morse, Alan Dean
 Morse, Norman Gates
 Motter, Noah
 Mudd, Philip Woodrow
 Mudd, William Elmer
 Muir, Howard Payne
 Muir, James E.
 Mulford, Robert
 Murdock, Aubrey E.
 Murdock, Harold
 Murdock, Samuel L.
 Murfin, Lee Emery
 Murfin, Maurice
 Murphy, James
 Murphy, Roy J.
 Murphy, Viola Jo
 Murphy, William Harold
 Murrell, Charles E., Jr.
 Myers, Oty Alvoid
 Myers, Paul Deaver
 Myshrrall, Roderick Joseph
 McGill, Joseph Samuel
 McCollum, David
 McCuskey, George
 McDonald, Evelyn

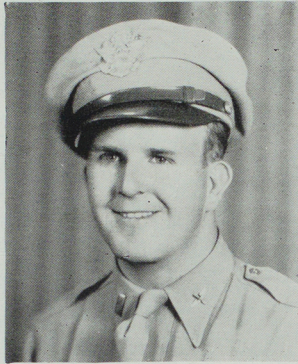
McFarland, Garnett
 McKane, Elizabeth Kathryn
 McKasson, Omer Daniel, Jr.
 McKinney, Robert Logan
 McLeod, Harry F.
 McNeal, Alvin Irl
 McNeely, Emil
 McQuarry, Warren
 McVey, Howard
 McWhorter, Charles O.
 McWilliams, James

Nacy, William Peter
 Nagel, Roland
 Naughton, Aldace
 Neal, Jeff
 Neal, John Ralph
 Neil, Harvey Boyd
 Nelmark, George Gregory
 Nelson, James Rowland
 Neville, J. H.
 Newberry, Donald William
 Newcomer, Kenneth
 Newman, Robert
 Newton, Thelbert
 Nickells, Billy
 Nigh, Lesta May
 Noble, Carl
 Noble, Frank
 Norconk, Jeff
 Norman, James William

O'Briant, William M.
 O'Bryan, Gerold Wood
 Olds, John Wesley
 Oliver, Alonzo
 Oliver, Paul
 O'Connor, Robert
 Orendorff, Leta A.



IN SERVICE



Lt. Lyle Blanchard

Osborn, Elmer George
Osbourne, William Glen
Overfelt, Charles Russell
Owen, John Baxter

Page, Merritt
Palmer, John Edward
Palmer, Mildred
Patterson, Lloyd
Paul, Marian
Payne, J. T.
Pearson, Elliott S.
Peck, E. M.
Pegler, Sidney
Pemberton, Charles W.
Perkins, Dale
Pershing, John J.
Peters, Chester J.
Peters, Gerald
Phelps, Jessie Eleanor
Phillips, Roy
Phillips, Virginia W.
Pickens, Donald Eugene
Pickens, Jean
Pickens, William Wesley
Pierce, D. A.
Pierce, Vernon Wyatt
Pigg, Russell Lynn
Platz, Alan Marvin
Pollock, G. Edwin
Pollock, Keith Kermit
Porter, Ardes
Porter, Joseph Edward
Porter, Perry
Post, Leslie
Powell, Delbert Max
Powell, Don W.
Powell, Josee R.
Powell, John
Powell, Marvin S.

Power, Andrew
Prater, Lawrence
Primm, Neal
Primm, Shirley
Primrose, James William
Pulliam, Jess Willard

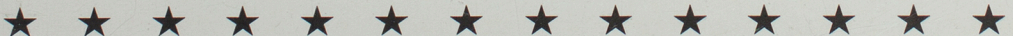
Quante, H. R.

Randall, John J.
Ratliff, Maurice Waddill
Rauer, Luther E.
Reese, Jessie Wilbur
Reeves, Gerald
Reeves, William
Reid, John William
Renoe, Morton, Jr.
Reynolds, Wendell
Rice, Philip D.
Richardson, Ourville B.
Richardson, Eugene P.
Richey, Maurice Hastings
Rider, Woodrow
Riebel, Clarence Edgar
Rieger, Nathaniel Browning
Rieger, Wray
Riley, Claude D.
Rimer, Eldon
Ritter, Mildred
Roark, Robert
Roberts, Aven Lee
Roberts, Henry Arnold
Roberts, Richard Ray
Roberts, Willard Wayne
Robertson, Jeff
Robinson, John Thomas
Roebuck, Maurine
Rogerson, Charles Z.
Rollins, Leon

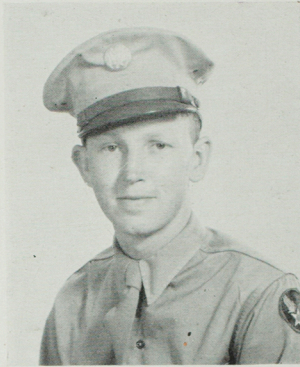
Rolston, Edwin James
Roodhouse, Byron Lemmuel
Roseberry, Dean A.
Ross, James McGlasson
Ross, Robert Samuel
Rothschild, Bill Felix
Rothschild, Bobby Kahn
Rowe, Allen Edward
Ruddy, Edward Michael
Rulon, Wayne L.
Rugh, Orville Richard
Russell, Ralph
Russell, Ralph
Russell, Vernon
Ruth, Martha
Rutherford, Kenneth
Ruyle, Asa M.

Saar, Donald
Sage, James
Sage, John
Schmid, Charles Edward
Schmid, Dick
Schnelle, William
Schoenback, Glenna
Schott, Marion
Schopp, Dorothy Therese
Schrage, Norville Emil
Schwack, John William
Scobee, Paul
Scott, Keith
Seaman, Benton Wilson
Sears, Wendell E.
See, Harold W.
Sees, Berthol Earl
Sees, Ralph
Seitz, Kerlin McCullough
Settle, Keith Woodford
Sevits, Wallace H.

Sevits, Willis Lee
Sewell, Howard Philip
Shadle, John Galen
Shaffer, Mina
Shain, Ralph
Shanight, Harry
Shanight, Herbert L.
Shaw, Boone
Shearer, Henry Wendell
Sheehy, Thomas Rolla
Shelton, Mildred Meyers
Shepard, Arthur
Shepperson, Wilbur
Shoopman, Raymond E.
Shores, John Robert
Shores, Willard
Shoush, Robert L.
Shoush, Ronald W.
Shreckhise, Oliver E.
Shuey, Jimmy
Shults, William E.
Simler, Darrell D.
Simmons, R. W.
Simpson, James
Simpson, John Wallace
Singley, Charles E.
Singley, Earl
Singley, James
Singley, Riley
Sirakas, John Joseph
Stocum, Joseph Sherman
Stocum, Richard L.
Sloop, Carroll Clare
Sloop, Howard Hays
Sloop, Russell E.
Smith, Billy G.
Smith, Earle E.
Smith, G. W.
Smith, Mary Sam
Smith, Norman Leslie



IN SERVICE



Lt. Ralph Shain

Smith, Paul Lee
 Smooth, James L.
 Smoot, William Taylor
 Snider, H. H.
 Souders, Robert
 Spainhower, John Austin
 Sparks, Harold
 Spindler, Charles Robert
 Snyder, D. E.
 Sproul, Barbara
 Spires, Ralph
 Stamer, Paul F.
 Stanley, Hilton
 Stanley, Vernon
 St. Clair, Henry
 Stephens, A. J.
 Sterling, Dale H.
 Sterne, Eldon
 Stewart, Dorothy
 Stice, Silas Phillip
 Stock, William Melvin
 Stofel, Howard
 Stokesberry, Jack Elmo
 Strangio, Vincent
 Straw, Loren Lewis
 Strub, James V.
 Strub, Paul
 Struby, Harry Carl
 Stultz, Wendell L.
 Sublette, Howard Benjamin
 Sutton, Bill
 Sutton, Paul B.
 Sutton, Ralph Earl
 Swain, Harrison R.
 Swann, John Marvin
 Sykes, Kenneth

 Tallman, Robert
 Taylor, Jimmie Joe

Taylor, John W.
 Terry, James Kyle
 Teters, Billy
 Thomas, C. D.
 Thomas, Ferris Kimball
 Thomas, Mary Lou
 Thompson, Floren T., Sr.
 Thompson, Gerald
 Thoroughman, George
 Thurlo, Eugene
 Thurman, Karl E.
 Timmons, Rollie Edward
 Tinsley, William Milton
 Tock, William Andrew
 Truitt, Charles
 Trunnell, Erle
 Turner, Mary
 Turner, William Lee

 Ukrop, John Daniel
 Unash, William

 Vail, Frank
 Vanderford, Louis
 Vestal, Austin Lavern
 Vincent, Richard
 Volmert, George

 Waddill, Delbert
 Waddill, Francis S.
 Waddill, Garnett Arthur
 Waddill, Jack Spencer
 Waddill, James B.
 Wagner, Willard
 Walden, Willard C., Jr.
 Walker, James Franklin
 Walter, Francis Marian
 Ward, Frank
 Ward, James F., Jr.

Warden, Ross M., Jr.
 Warren, Raymond M.
 Wasson, Harrison W.
 Watson, Eugene
 Webb, Herbert C.
 Webb, Robert
 Wein, Edgar
 Wells, Chester R.
 Western, John Leonard
 Western, Paul
 Westfall, Glen
 Westrup, Charles M.
 Whalen, Paul, Jr.
 Wheeler, Harold Leroy
 Whisler, Robert
 Whiteaker, Earl
 White, Harold Dean
 White, Richard Charles
 Wiggans, Hugh
 Wild, Roy E.
 Wilgus, Donovan Ray
 Wilgus, Gerald Thomas
 Williams, Edward E.
 Williams, Clifford R.
 Williams, Kenneth A.
 Williamson, John B.
 Willis, Harold Wayne
 Willis, Robert Phillip
 Willis, Elbert
 Wilson, John
 Wilson, Joseph Robert
 Wilson, Orace Clark
 Wimp, Jesse J.
 Winn, John Henry
 Winter, Weldon J.
 Wise, Glenn
 Wolf, Emery Lee
 Wood, Leland
 Wood, Paul

Woodward, G. L.
 Woods, Bob
 Workman, Burke O.
 Wright, Floyd Vernon
 Wright, Horace Audrey
 Wunderli, Alfred Keeble
 Wunnenberg, Chris August

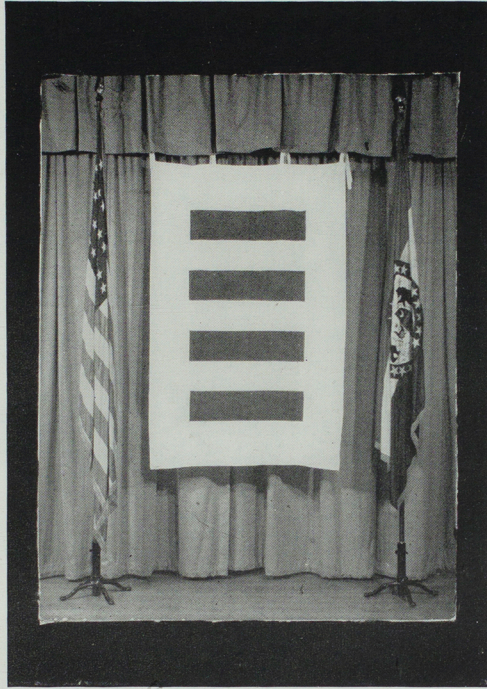
 Yaskiw, Alexander
 Yeager, Bernard
 Yocum, Dale Morris
 Yocum, Harvey L.
 Yount, Veryl B.
 Young, Charles
 Young, Donald
 Young, Harvey
 Young, Keith
 Young, Millard Bertram
 Yowell, Clyde

 Zentz, Bernard Lee

CASUALTIES PRIOR TO 1944:

Attebery, Carl B.
 Bass, Clyde
 Davis, Jerry
 Hensley, Glenn
 Hall, Gerald David
 Johnson, George Walter
 Kumm, Karl W.
 McGilton, Howard
 Peterson, Frederick
 Rieger, Philip Eugene
 Rowland, James Russell
 Steen, Mark Wayne
 Sleyster, Frederick B.
 Shouse, Dale E.
 Vieth, Arlington





UNITED NATIONS FLAG



VETERANS

Row 1: Harnett, Davidson, Northcraft, Reitz

Row 2: Gudka, White, Patrick, Sterne



Row 1: Hanes, Ruhwedel, Brennecke, Underhill, Ferguson, Martin
Row 2: Lansdale, Webb, Ward, Smith, Whitton, Koffenberger
Row 3: Mr. Valentine, Hamilton, Ruhwedel, Thurman, McCollum, Smith, Bushnell
Row 4: Ziegel, Schott, Reynolds, Fairchild, Linder, Magruder
Row 5: Kaufman, Anderson, Rash, Siegrist, Stinson, Gilbert, Perkins

CHORUS

The Women's Chorus, under the direction of Prof. R. E. Valentine, is composed of forty-three voices. Rehearsals were held on Monday and Wednesdays in Baldwin Hall 213.

The chorus members for three quarters include:

Bentley, Lois; Boise, Elaine; Brennecke, Doris; Bushnell, Lola; Campbell, Karalee; Clare, Roberta; Cleveland, Dawn; Dieffenbach, Ethyl; Fairchild, Deloris; Ferguson, Bertha; Gilbert, Corene; Haley, Charlotte; Kanouse, Marjorie; Kaup, Wilma; Kimball, Merle; Lett, Viva Sue; Linder, Velda; Magruder, Carolyn; Martin, Mary V.; Montgomery; McCollum, Ella; McSorley, Katherina; Northcutt, Mary; Perkins, Frances; Phillips, Mary Evelyn; Quinn, Mary; Rash, Elaine; Schoneboom, Marjorie; Schott, Bernice; Siegrist, Ruth; Slaughter, Betty; Smith, Betty; Smith, Peggy; Taylor, Margaret; Underhill, Jolene; Ward, Virginia; Williams, Carol; Zeigel, Johanna.



Row 1: Scarce, Jones, Slaughter, Horn

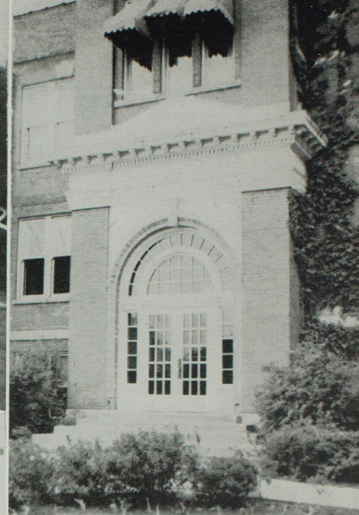
Row 2: Hartford, Dodson, St. Clair, Miley, Gehringer, coach

BASKETBALL

After an absence of four years, basketball emerged upon the scene once again, under the able direction of Coach Vincent Gehringer. Although there were few men on the campus, Coach Gehringer developed what looks to be a promising team.

Teams played were: Kirksville College of Osteopathy, Moberly Junior College, Iowa Wesleyan, and Hannibal-LaGrange Junior College.

The "Bulldogs" lost six of the eight scheduled games, but they had the fighting spirit and with more experience they will undoubtedly make a better showing next year.



THANKS TO . . .



Mr. Clifton Cornwell, staff photographer



Mary Margaret O'Connor, staff artist

and to

Mrs. Inez Shaffer, of the Shaffer Studio, without whose splendid cooperation and assistance this yearbook could never have been produced.

Mr. F. N. Ropkey, Manager school publications, The Indianapolis Engraving Company.

Mr. J. W. Patterson, Huston-Patterson Corporation, Printers.

And thanks also to the following persons who helped with our copy: Calista Thomas, Mary Ethel Dawdy, Doris Almeling, Nancy Roy, Lois Bentley, John Fox, Connie Kirby, Doris Jean Reid, Erma Brookhart, Corinne Gilbert, Elizabeth Spindler, Judy La Frenz, Leanna Moore, and Mary Evelyn Phillips.

AUTOGRAPHS



Printing by
Huston-Patterson Corp.
Decatur, Illinois

Engraving by
Indianapolis Engraving Co.
Indianapolis, Indiana

This book is for use
IN THE LIBRARY ONLY.

