

NORTHEAST

today

Northeast Missouri State University

Vol. 3, No. 15

December 7, 1987

Student Wins Competition

NMSU was well represented in the annual Anheuser-Busch, Inc./Soulard Mardi Gras Association Poster Art Contest. This year marked the first time NMSU students entered the competition, and senior advertising design major Jeff Thomas won the first place award. Thomas was awarded \$500 for his winning entry at a ceremony held at the Anheuser-Busch Tour Center held in St. Louis, Nov. 6.

Approximately 50 people participated in the contest, which was open to all artists, professional designers, illustrators, university faculty members and students. Thomas felt the quality

of entrants was high.

"A lot of them were teachers, professors, like from Washington University . . . the guy who got second was a professional artist in St. Louis," Thomas said.

Five thousand copies of Thomas' illustration will be printed for use as the official Soulard Mardi Gras poster for 1988. Thomas will sign and number 100 posters to be sold to private collectors. The original will hang in the Anheuser-Busch Tour Center.

"We feel that Jeff's poster has a flavor of our theme this year, which is 'Mardi Gras . . . A Rendezvous with Aphrodite,' said Tom Gulickson, executive

director of Soulard Mardi Gras Association. "It's really an honor [for Jeff] to be chosen. It gives him a lot of exposure and the posters are sought after souvenirs."

The other entries will be auctioned off with 50 percent from each artwork going to the artist, and 50 percent will be used to establish an art scholarship fund for a St. Louis area public high school student. The total funds raised from the auction for the fund will be matched by Anheuser-Busch.

Though this contest was a first for NMSU and for Thomas, he is confident it won't be the last for either.

Windfall Profits from Contributions

Windfall, the campus literary magazine, will be upgraded and improved with money contributed by local literary journals. The magazine publishes poetry, short fiction, short drama and photographs submitted by students.

Windfall staff members earned \$116 this semester by selling subscriptions to *Paintbrush*, an international journal of poems, translations and letters founded and edited by Benjamin Bennani, associate professor of language and literature. Windfall staff members received two-thirds of the price of each subscription sold on campus.

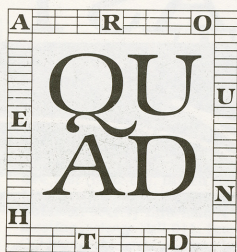
"People responded very well—all kinds of people from all levels of the University—from administration to faculty to staff members," Bennani said.

Sophomore Kirt Manuel, managing editor of *Windfall*, said, "We really appreciate that sort of effort. It's kind of like having a sister journal—we help each other out." *cont. pg. 4*

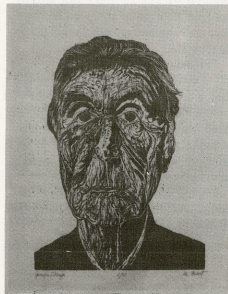
Deck the Mall



Freshmen Cheryl McClellan (l) and Kathleen Sheehan (r) get into the holiday spirit at the SAB Christmas tree lighting, Dec. 1.



EXHIBITION ON DISPLAY



Georgia O'Keefe, by Marsha Sweet, is one of the works included in "The Print Consortium," a women printmaker's exhibition on display until Dec. 11 in the Art Gallery, Baldwin Hall, second floor.

Northeast Today Staff

Editor-in-Chief Michelle Yost
 Associate Editor Barb J. Dietrich
 Contributing Writer ... Callen Fairchild
 Production Cindy Farmer
 Best Boy Jay Smith
 Photographer Tom Richardson

The Sounds of Christmas

NEMO Singers Candlelight Concert with the Brass Choir.

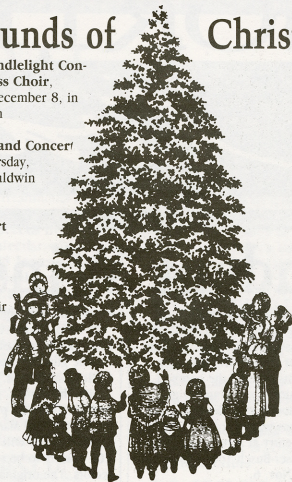
8 p.m., Tuesday, December 8, in Baldwin Auditorium

Wind Symphony and Concert Band,

8 p.m., Thursday, December 10, in Baldwin Auditorium

University Concert

featuring the Flute Choir, the University Chorus, the NEMO Singers, the Woodwind Choir and the Chamber Choir, 3 p.m., Sunday, December 13, in Baldwin Auditorium



RHA ELECTION RESULTS

After reorganizing of the Resident's House Association last year, the Association held its first ever campus-wide election, Nov. 30. Election results follow:

President—Gail Sunder
 Vice President—Sherry Friedrich

REGISTRATION SCHEDULE

Dec. 7

Freshmen (0-29.9 hours completed prior to current semester)

Time	Digit	Last names beginning with
8:15-10 a.m.	3	M through Z
10-11:30 a.m.	3	A through L
1-2:45 p.m.	2	M through Z
2:45-4:15 p.m.	2	A through L

Dec. 8

Freshmen (0-29.9 hours completed prior to current semester)

8:15-10 a.m.	1	M through Z
10-11:15 a.m.	1	A through L
1-2:45 p.m.	0	M through Z
2:45-4:15 p.m.	0	A through L

Dec. 9

Freshmen (0-29.9 hours completed prior to current semester)

8:15-11:15 a.m.	Open enrollment for freshmen who missed their scheduled time
1-4 p.m.	Open enrollment for freshmen

Dec. 10

8:15-11:15 a.m.	Open enrollment
1-4 p.m.	Open enrollment

MEETING SET FOR PAGEANT CONTESTANTS

A meeting for all women interested in participating in the Miss A.B.C. Pageant, sponsored by the Association of Black Collegians will be held at 5 p.m., Dec. 10, SUB 5. The Pageant will be held Feb. 28 in Baldwin Hall Auditorium.



NMSU LIVE FEATURES CHRISTMAS EDITION

Sophomore Woody Jones displays his talent in hope of being chosen as a performer for NMSU Live-Christmas Edition. Try-outs were held Dec. 2 and 3.

WRITING PROGRAM NEEDS "READERS"

"Writing Across the Curriculum," a program designed to improve courses and the abilities of students will be implemented next semester.

The Writing Across the Curriculum Colloquium will consist of twelve faculty members from various disciplines. The members will meet with writing specialists to discuss improved use of writing assignments and with student peer readers.

The program will require student peer readers to read and evaluate student papers as well as hold a conference with the writer.

Peer readers should be experienced in peer editing and have strong writing skills. Readers must also be able to communicate ideas to both student writers and faculty members.

Interested students should submit a letter of application describing their experiences as peer editors and their interest in being a part of the program, along with a writing sample. All application materials must be turned in to Shirley Morahan, director of composition, A/H 315, by Dec. 15.

ELIZABETH DOLE REACHES KIRKSVILLE

Former Secretary of Transportation Elizabeth Dole promotes her husband's presidential campaign during a visit to Northeast, Nov. 18. Dole's presentation was sponsored by the Adair County Republican Club and the NMSU College Republicans.



Final Exam Schedule

All classes scheduled for two consecutive periods will take their examinations beginning the first hour of the scheduled time. For example, students in ACCT 308 (01) Managerial Accounting, which is scheduled from 9:30-11:00 a.m. on Tuesday and Thursday, will start their final examination on Friday, December 18, 1987, at 9:30 a.m.

Monday, December 14, 1987	7:30-9:20	9:30-11:20	11:30-1:20	1:30-3:20	3:30-5:20
Tuesday, December 15, 1987	11:30 TTH	12:30 MWF	1:30 TTH	9:30 MWF	7:30 TTH
Wednesday, December 16, 1987	10:30 MWF	3:30 MWF	8:30 TTH	2:30 MWF	7:30 MWF
Thursday, December 17, 1987	Final Exams Break Day. No final exams or tests scheduled, including evening classes.				
Friday, December 18, 1987	8:30 MWF	12:30 TTH	1:30 MWF	3:30 TTH	10:30 TTH
	11:30 MWF	9:30 TTH	2:30 TTH	4:30 MWF	4:30 TTH

Windfall (cont.)

Windfall is partially funded through the Division of Language and Literature, but also receives funds from the *Chariton Review*, a literary journal edited by Professor of English Jim Barnes, and other private contributions.

"The annual *Chariton* contribution is really helpful too," Manuel said.

Manuel said the funds will be used to improve both the content and appearance of the magazine.

"We wanted to see *Windfall* change. In the past couple of years it has been mostly participation-oriented; we tried to publish at least one poem by everyone who submitted something. Now we have decided to focus on quality. This year we accepted four of 140 submissions," Manuel said.

Manuel said the fall issue was cancelled because of the small amount of material accepted for publication.

"Submissions are still open for the next issue, which will be published sometime in the spring semester," he said.

The submissions were judged on their literary merit by a blind jury of *Windfall* editors. Manuel said the editors comments were collected and returned to the contributors whose work was not accepted.

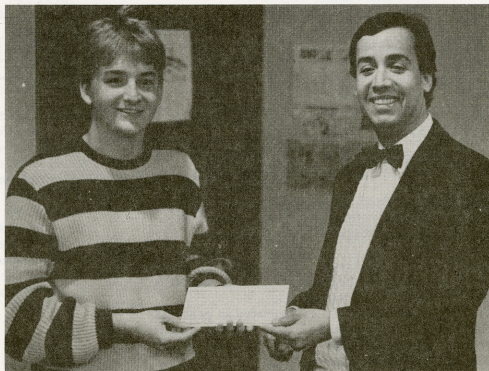
"A lot of the work has good potential and some very strong sections. We'd love to have some of that stuff back after it's been worked on," Manuel said.

Manuel said the staff hopes to improve the appearance of the magazine as well as its content: "The latest issue looked much better—we've gone from stapling reduced dot-matrix printouts together to using the MacIntosh. We find it looks pretty good."

Manuel said he would like to see the magazine be produced by a printer rather than be typeset by the staff.

"It's a big job to get the magazine out. I thought the last issue was really nice but it just about killed us to get it out," he said.

Copies of the latest edition of *Windfall* are available from the *Windfall* adviser Jim Thomas, associate professor of English, in A/H 333 for \$1.50 a copy.



Kirk Manuel, managing editor of *Windfall*, receives a check for \$116 from Benjamin Bennani, associate professor of language and literature and editor of *Paintbrush*.

Yes there is a Santa Claus! Students got their photograph taken with him in the SUB, Dec. 2 and 3. Pictured (l-r) are Sandy Burnau (junior), Scott Dent (soph.), Steve Klopčic (soph.) and Jill Gagtiardi (junior).



Student Dies of Asphyxiation

Junior Gina Houston died Nov. 28 from gas asphyxiation. A gas leak in the furnace of the trailer she was staying was cited as the cause.

Gina, a math education major, was a resident advisor of Busch House in Ryle Hall and a member of the German Club. She was the daughter of Mr. and Mrs. Marvin Houston of Holliday, Mo.

NORTHEAST NOTABLES

Jim Barnes, professor of English, had two comic sonnets, "The Rejection" and "Jack Armstrong Taught Me How to Hold My Tears," published in the October issue of *Blue Unicorn*, a San Francisco literary magazine. Barnes has also had five translations of poems by Jean Tardieu—"Song of the Night," "Song of the Crime," "Song of the Sham Sailor," "Bad Memory" and "Night, Silence and Beyond," accepted for publication in *Prism International*, a world-class magazine published by the University of British Columbia.

The Chariton Review, a biannual journal of fiction, poetry, essays and translations edited by Barnes was featured with a photograph and review from the *Library Journal* in the October 1987 issue of *Harper's Magazine*.

Benjamin Bennani, associate professor of language and literature, was recently guest critic for the Poetry Society of St. Louis. Bennani conducted a three-hour workshop on poetry writing in St. Louis. "Roundness and Length," a poem by Bennani, appears in the current issue of *MSS Magazine*, a literary journal founded by John Gardner.

Centennial and Missouri Hall residents recently completed a cardiopulmonary resuscitation class taught by fellow students. Senior nursing majors **Janet Heaton**, **Karen Maus** and **Sherri Williams** conducted the class. Motor performance skills included one-man CPR, infant CPR and choking techniques. The following students participated: **Cindy Spray**, **Nancy Dicks**, **Patricia McBride**, **Joanne Rozhon**, **Jane Sadler**, **Laura Black**, **Chris Perkins** and **Beth Jennings**.

Pat Ellebracht, assistant professor of business administration, was featured in an article published in the August 1987 issue of *Teletaining*

newsletter. The article focused on Ellebracht's tele-lecture series which has brought more than 250 guest speakers to NMSU via telephone lines.

A manual on law enforcement intelligence reports developed by **Charles Frost**, associate professor of justice systems, was distributed to delegates at the annual meeting of the International Association of Chiefs of Police in Toronto. Frost developed the publication for use in his course on intelligence collection and analysis.

Delores Lesseig, assistant professor of nursing, had an article entitled "Home Care for Psych Problems" published in the October issue of *AJN*.

Sharon McGahan, assistant professor of nursing, presented "The Nursing Care of Clients with Disseminated Intravascular Coagulation" as part of the CCU Update, an Oct. 14 program sponsored by KCOM at the Gutensohn Clinic.

Ronald Meier, instructor of electricity/electronics, presented a paper, "Instrumentation and Control through Micro-computer Interfacing," at the twentieth annual conference of the National Association of Industrial Technology at Nashville, Tenn. on Oct. 22.

Keith Moore and **Mary Virnoche**, directors of Dobson and Ryle halls, won second place in the 12 team Case Study competition at the Upper Midwest Association of College and University Housing Officer Conference in Kansas City. More than 575 delegates from 110 institutions attended the conference Nov. 4-6.

Jean Pfiefer, president of Cardinal Key national honor sorority, was elected to serve a two-year term as vice-president of the Cardinal Key

National Board of Directors at the Cardinal Key national convention in Lincoln, Neb., in October.

Beth Pflueger, instructor of fine arts, recently joined the Civic Orchestra of Chicago in a flute-piccorno position. Pflueger is on leave from the University to pursue a doctorate at Northwestern and will return to the NMSU next fall.

Vishnu Sujanani, graduate teaching/research assistant in communication disorders, has received the Young Scholars Award from the American Speech-Language-Hearing Foundation. Competition for the \$2000 award was nation-wide and selection was based on a submitted paper. Sujanani's paper was titled "Stuttering—In Search of Roots."

Roy Tanner, associate professor of Spanish, delivered a paper, "Euphemism and Circumlocution in the Prose of Ricardo Palma: A Stylistic Key," at the Mid-America Conference on Hispanic Literature at the University of Nebraska-Lincoln in October.

Jeff Thomas, a senior advertising design major, won the annual Anheuser-Busch, Inc./Soulard Mardi Gras Association Poster Art Contest held in St. Louis, Nov. 6. See related story.

Sophia Yu, a 1986 graduate of NMSU, had her article, "A New Microcell Technique for NMR Analysis," published in the September 1987 issue of the *Journal of Chemical Education*.

Lori Zoll, a junior music education major with an emphasis in piano, received an Honorable Mention for her piano performance at the Missouri Music Teachers' Association State Convention in Columbia. Zoll studies with Janice Saffir, assistant professor of piano.

Scholarship Work Options

The Scholarship Work Option job pool contains jobs available in the Spring semester for students working to renew University scholarships. Students whose grade point averages have dropped below the minimum level but have maintained a 3.25 GPA may renew by working for the University in some capacity for five hours a week. Student employment opportunities across campus are listed below. Students participating in the work option program will not receive money directly but will have it applied to their financial account.

Students who have excelled in science courses are needed to tutor BIOL 100, CHEM 100 and PHYS 100. Contact Jack Magruder at 785-4597 or Elsie Gaber at 785-4136.

Persons are needed to clean the Kennels, the football locker rooms; act as managers; hand out and take in gear; perform secretarial duties; set up the field for home games and paint the end zones. Work involving other sports will also be available. Contact Jack Ball at 785-4170 or Eric Holm at 785-4252.

The criminal justice department needs students to perform data entry and retrieval for the regional criminal information computer network. Interested students should provide a resume with citizenship, social security number and addresses since 1977. Before being hired, students must pass a police background check and sign a secrecy agreement. Contact Charles Frost at 785-4667 for more information.

The Division of Education is looking for students with computer skills to perform library research, correspondence, word processing and program writing. Contact Scott Olsen at 785-4396.

The Graduate Office has clerical work available for interested students. For more information contact the Graduate Office, A/H 203, at 785-4109.

Work is available at the University farm and Barnett Hall for students interested in horses and equine science. Contact Mike Klem at 785-4584 for more information.

A student with some background in Spanish (either high school or college) is needed to assist Thomas Capuano, assistant professor of foreign language, with research and word processing. For more information contact Capuano at 785-4191.

Elizabeth Clark, instructor of communication, needs a student to coordinate and schedule on-campus group discussions and to send out mailings. Contact Clark at 785-4510 for more information.

A student is needed to conduct library research and monitor quizzes. Contact Marcia Dixon, instructor of language and literature, at 785-7230 for more information.

David Partenheimer, assistant professor of English, needs a student to assist in research projects and general office work. Call 785-4518 for more information.

A student is needed to assist in research and to do general office work. Contact Maren Partenheimer, assistant professor of German, at 785-4274 for more information.

An arts newsletter assistant is needed for the Division of Math and Computer Science. Requirements include a journalism background, word processing skills and an interest in art forms. For more information contact Carolyn Frick at 785-4283.

One or two German-versed students are needed to work with bibliographical material, conduct library research, preview video cassettes and perform clerical work. Students studying German or other foreign languages are preferred. Contact Connie Reid, assistant professor of foreign language, at 785-4509.

Students who have earned a B or higher in CHEM 100 or General Chemistry are eligible for positions as tutors or lab assistants for these classes. For more information contact Brian McGuire, assistant professor of chemistry, at 785-4608.

James Shaddy, assistant professor of ecology, needs a student to write CAI programs for biology. Computer programming skills are required for the job. For more information, contact Shaddy at 785-4618.

Office work including typing, computer work, duplicating and special projects is available in the Division of Social Science office. Faculty assistant positions, which include typing, duplicating, grading and research are also available. Contact Sandy Schneider at 785-4636 for more information.

Blue Key is looking for an assistant to help plan and coordinate the Blue Key Scholar Quiz. Prospective workers should be creative and have typing and filing skills. Contact Student Activities, A/H 204, at 785-4222.

Workers are needed in the Teaching Skills Center. Contact Loren Grissom, Violette Hall 247, at 785-4397.

Students are needed for peer counseling in the Testing Services Office. Contact Michael Kacir at 785-4140 for more information.

Clerical work is available for ten hours per week in the International Student Office. Duties include typing, filing, etc. For more information contact Fran McKinney at 785-4215.

Two students are needed to raise and lower the flag in front of Ophelia Parrish. Students must be available at 8 a.m. and 5 p.m. daily. Contact Joan Martin of Safety and Security at 785-4177.

NORTHEAST NOTES

Pi Kappa Delta honorary speech and debate organization will be selling Mail-a-Party gifts for Christmas and finals week. The packet contains ingredients for a party. Cost is \$1. Sales will be held from 8:30 a.m.-2:30 p.m., Dec. 8, 9 and 10 in SUB, Dec. 8 and 10 in A/H and Dec. 9 in Violette Hall.

The Writing Center is accepting applications for Spring '88 tutors. Applications may be picked up in A/H 303.

Minority Reporting Intern Program applications are available in the Minority Services Office, A/H 103. The program is sponsored by the Dow Jones Newspaper Fund, Inc. To qualify, minority students must be of sophomore status and be majoring in a communication field. Application deadline is Jan.

31, 1988. For more information on this program or other minority internships in journalism, contact the Minority Services Office.

Part-time facilities repair crew jobs are available for spring semester with Residence Life Facilities. Students must have a 2.5 GPA and full-time status. Apply from 8 a.m.-5 p.m., Facilities Office, Ryle Hall 114 (785-5253).

Campbell Apartment manager position is available for Spring 1988 semester. Application deadline is Nov. 30.

SAB Spring Break Trip to Padre Island is being planned. The March 4-13 trip will cost \$267 or \$260 with an SAB sticker. More information will be included in upcoming Northeast Todays.

A toy and book drive for the Wee Care Center, a local infant and toddler day care center, is being sponsored by the Student Member Section of the American Home Economics Association. Donations of used toys and books are being accepted in Violette Hall 173 until Dec. 11.

The Accounting Club invites all accounting majors to an open meeting at 6:30 p.m. Jan. 13 in Violette Hall 121.

Varsity cheerleading tryouts for one male member will take place Dec. 10 at 4:30 p.m. in the Pershing Building Little Gym. A clinic will be held on Dec. 8 for those interested in trying out.

University offices will be closed Dec. 23 through 25 and Dec. 30 through Jan. 1.



*Happy
Holidays*

This Week

30 MONDAY

- 2:45 p.m.—**ACT/COMP Objective Test** (make-up), Barnett Hall
- 7 p.m.—**Chariton Valley Audubon Society informative meeting**, Science Hall 011. Peter Goldman, associate professor of science, will speak about the threat of impending oil development to wildlife in the Arctic National Wildlife Refuge in Alaska. A video will accompany the talk. All interested are welcome.
- 7-9 p.m.—**Auditions for Shakespeare's Macbeth**, Baldwin Hall 180. For details call 785-4267 or see Professor of Dramatics James Severns in Baldwin Hall 101.
- 10 p.m.-2 a.m.—**Dining hall study centers open**, Missouri, Centennial and Ryle halls. The study centers will be open Sunday-Thursday evenings; off-campus students must be accompanied by a resident.

8 TUESDAY

- **Senior Visual Communications Exhibition**, Shu Ping Trisa Chang, Baldwin Hall, second floor; through Dec. 10.
- 7:30 p.m.—**Bob May of the Kirksville College of Osteopathic Medicine**, will show a 1939 film on life and business in Kirksville; A/H 210. The program is sponsored by Phi Alpha Theta, honorary history society.
- 8 p.m.—**NEMO Singers Candle-light Concert**, Baldwin Auditorium
 - Daybreak**, a musical ministry team, will present a program about the gospel of Jesus Christ through music and drama sketches; SUB Activities Room. The program is sponsored by the Lutheran Student Movement, and admission is free.

9 WEDNESDAY

- 6:30 p.m.—**German Club Christmas meeting**, Baldwin Hall 285. A video of Christmas

carols and celebrations in various parts of Germany will be shown. There will be refreshments and German doorprizes, members should bring proceeds from individual Advent calendar sales.

- 7:30 p.m.—**1988 Japanese Language and Cultural Studies program informational meeting**, A/H 304. For more information, call Karen Kay at 785-4678 or 785-4481 or Marc Gallicchio at 785-7243 or 785-4636.
- 8 p.m.—**Mephisto**, an Academy award-winning German film, will be shown by the University Players Free Film Club. Admission is \$2 or free with a membership card.

10 THURSDAY

- 3:30 p.m.—**"A Victorian Christmas,"** a slide show featuring a miniature Victorian doll house and furnishings, will be presented by Pam Clark, clothing and interiors student; Violette Hall 172. The presentation is a part of the Division of Family Sciences Student Appreciation Day. Refreshments will be served and the NMSU Collection of Historic Textiles and Related Arts will be featured at the Home Management House, 202 E. Patterson, after the presentation. All students, faculty, staff and community members are invited.
- 4-8 p.m.—**Grim Hall Open House**; refreshments will be provided.
- 5 p.m.—**Miss A.B.C. pageant meeting**, SUB 5. All women interested in participating in the Association of Black Collegians pageant should attend.
- 8 p.m.—**Wind Symphony and Concert Band**, Baldwin Auditorium. Presentation is free and open to the public.
- 7 p.m.—**World Peace Group**, last meeting of the semester and potluck dinner, 1007 E. Randolph. For further information

call 665-5062.

- 7 and 9:15 p.m.—**"The Secret of My Success," SAB movie**, Baldwin Auditorium. Admission is \$1.50 or free with an SAB sticker.
- 7:30 p.m.—**Men's Basketball vs. Marycrest** (Iowa) College, Pershing Arena

12 SATURDAY

- 8 a.m.—**ACT Assessment National Test**, location to be announced
 - Graduate Record Examination** (GRE senior), location to be announced
- 1 p.m.—**Men's and Women's Swimming vs. St. Louis University**, Natatorium

13 SUNDAY

- 3 p.m.—**University Chorus Concert**, Baldwin Auditorium. Concert is free and open to the public.
- 8 p.m.—**Piano major's recital**, Baldwin Auditorium

14 MONDAY

- **Final examinations begin**

16 WEDNESDAY

- **Final examinations break day**

17 THURSDAY

- 7:30 a.m.—**Final examinations resume**

18 FRIDAY

- 8 a.m.—**General Educational Development Test (GED)**, A/H 103
- 9 p.m.—**Fall semester ends**
- 10 p.m.—**Residence halls and apartments close**

19 SATURDAY

- 8 a.m.—**Real Estate Licensing Exam (RELE)**, location to be announced