

NORTHEAST

Today

Northeast Missouri State University

Vol. 6, No. 6

October 10, 1988

N O T E S

- **Announcements** are now being made in the SUB at 9:30 and 11:30 a.m. Anyone wishing to have an announcement made should pick up a form in the SUB main office.
- **The Admission Committee of the Division of Nursing** will meet on Nov. 7. All students interested in applying for admission into the nursing major should have all application materials submitted by 10 a.m., Nov. 7. Application packets may be picked up in the Division of Nursing Office, Kirk Building 104. Appointments can be made with faculty to discuss the nursing major.
- **The Distinguished Lecturer Series** presents Margaret F. Dimond, R.N., Ph.D., Oct. 18 at 2 p.m. in the SUB Alumni Room and at 7 p.m. in the SUB Conference Room. Dimond will lecture on "Gerontological Nursing Care."
- **Scholarships** for Student Leaders are available through the National Association for Campus Activities. The deadline for applying for any of the 10 available scholarships is Nov. 1, 1988. Contact NACA Educational Foundation, P.O. Box 6828, Columbia, S.C. 29260.
- **Windfall** literary magazine is now accepting submissions. Submission guidelines are available in the Division of Language and Literature, A/H 310. Submission deadline is 5 p.m. Oct. 28.

F. Gerard Errante, clarinetist will perform a recital at 8 p.m. Tuesday in the SUB Alumni Room. Errante is a clarinetist of international stature whose perfor-



mances have received worldwide acclaim. A native of New York City, Errante holds degrees from Queens College, the University of Wisconsin and the University of Michigan where he earned a Doctor of Musical Arts. Errante has recorded for record companies and national radio stations.

- **Campbell Apartment resident advisor** position is available immediately. Applications are available in the Residence Life Office, A/H 101. Requirements include a 2.75 GPA, completion of 30 credit hours and experience working with people. Application deadline is Oct. 18.
- **Syntheses: Undergraduate Research Papers from Northeast** invites the submission of research papers written for any undergraduate course or in connection with any undergraduate research project at NMSU. Please send two copies of the manuscript to Joanna Marshall, Division of Language and Literature, by Dec. 20.
- **Northeast Writers in Process** is now soliciting essays for its fifth edition. Any essay written for any liberal arts and sciences course is eligible for submission; however, preference will continue to be given to papers written in English Composition I. Please send two copies of the paper to Claire Peckosh, Division of Language and Literature, by Dec. 20.
- **Qualifying forms for Who's Who** are now available in Student Activities Office, A/H 204. Prerequisites include leadership qualities displayed through participation in academic and co-curricular activities, a minimum 2.75 GPA, and enough credit hours earned to allow the student to graduate by the end of the 1989 summer session. Application deadline is Oct. 24.

- **Recipients of the Missouri Higher Education Scholarship (Bright Flight)** may pick up the fall award at the Business Office, A/H 105. Recipients must be enrolled full-time (12 hours) to receive the check.
- **"Summer Jobs in Germany and Switzerland"** will be discussed at 6:30 p.m., Oct. 17 in Baldwin Hall 285. Students with at least one year of German are eligible for these jobs. Jobs are also available in Europe. A videocassette with interviews of students on the job in Europe will be shown.

The Lyceum Series presents

The Lyric Opera
of Kansas City
in Donizetti's



The Daughter
of the Regiment

8 p.m.
October 13, 1988
Baldwin Auditorium

Free tickets for students, faculty and staff are available in the SAB Office, SUB or at the door.

Financial assistance for this event has been provided by the Missouri Arts Council.



Cameras or any recording devices are prohibited during the performance.

Opera to Perform Thursday

Although Gaetano Donizetti's opera *The Daughter of the Regiment* was considered "filler" opera when it was first performed in 1840, the production has evolved into a repertory standard today and it remains a favorite of audiences almost 150 years after its premiere. The Kansas City Lyric Opera will bring its praised production of "Daughter" to Northeast's stage at 8 p.m. Oct. 13 in Baldwin Auditorium. The presentation is sponsored by the Lyceum Series, with financial assistance provided by the Missouri Arts Council, a state agency. The use of cameras or recording equipment during the performance is prohibited.

The theme of the opera is a classic one, boy-meets-girl, boy-loses-girl, boy-regains-girl. The "daughter" of the regiment is Marie, a young abandoned girl who is raised on the battlefield by a regiment of

Donizetti's comic opera "Daughter of the Regiment" is like one of those enormous soap bubbles blown from an oversize hoop: There's a simple delight in watching it float along unperturbed, even if you know it has merely the substance of a very thin film.

(From a review of the Lyric Opera of Kansas City's production of The Daughter of the Regiment by Kenneth LaFave which appeared in The Kansas City Times on Sept. 26, 1988.)

"fathers." After falling in love with a young man who saves her life, she discovers her true identity as the daughter of a countess.

The Lyric Opera, which last year brought their production of *The*

Marriage of Figaro to NMSU, has been dedicated to producing opera as theatre and in English since the organization was founded in 1958. This (1988-89) season marks the Opera's thirty-first anniversary and the twenty-third year the Lyric has toured. The Lyric is the oldest touring program in the Midwest.

Under the guidance of General Artistic Director Russell Patterson, the Lyric has received acclaim as one of the nation's major opera companies. Maestro Patterson recently received the State Ballet of Missouri's 1988 Piroquette Award as Performing Arts Contributor of the Year.

Free tickets for *The Daughter of the Regiment* are available to students, faculty and staff in the Student Activities Board Office, SUB and at the door.

Interviews on Campus

Interested students should bring a resume to the Business Placement Center

10 MONDAY

- Peat, Marwick & Main—Entry-level positions are available in audit and tax departments nationwide. Accounting majors only. Alumni and December, May and August graduates. Citizenship or regular U.S. work permit is required.

11 TUESDAY

- Penn Daniels—Entry-level management positions are available nationwide. Business and liberal arts majors; December and May graduates are welcome. Citizenship or regular U.S. working permit is required.

12 WEDNESDAY

- Target Stores—Management trainee positions are available nationwide. Business and liberal arts majors; December and May graduates are welcome. Citizenship or regular U.S. working permit is required.

13 THURSDAY

- Rolscreen—Entry-level accounting and management positions are available in Pella, Iowa. Business and accounting majors; December, May and August graduates are welcome. Citizenship or U.S. working permit is required.



Buckley on Campus

Author William F. Buckley Jr. will present a lecture on campus next week as part of the Lyceum Series. Buckley will speak on "Reflections of Current Contentions" at 8 p.m., Thursday, Oct. 20, in Baldwin Auditorium. Free tickets for students, faculty and staff will be available Oct. 14-20 in the Student Activities Board Office, SUB and at the door.

United Students for United Way *United Way Week* October 10-14

10 MONDAY

- 3:30 p.m.—United Students for United Way **kickoff celebration** in front of A/H. Entertainment will be provided by the Steppers, Unique Ensemble and Miss Kirkville Andrea Greenlee. Music will be provided on the mall.
- 4:15 p.m.—**Balloon ascension**

11 TUESDAY

- 9:30 a.m.-4:30 p.m.—**Rock-a-thon**, SUB; also Oct. 12. The rock-a-thon is sponsored by Gamma Phi Delta, Lambda Chi Alpha and United Students for United Way.

12 WEDNESDAY

- 8 p.m.-midnight—**Leisure night at Leisure World**, \$5 admission provides an evening of bowling, skating and pool. Half of each admission will be donated to the United Way. Leisure night is sponsored by the Society of Professional Journalists/Sigma Delta Chi and United Students for United Way.

13 THURSDAY

- **Food fast** for the United Way Food Drive 1988 in Missouri, Ryle and Centennial hall cafeterias. PFM will donate \$1.25 to United Way for each student who agrees to skip the dinner meal.

14 FRIDAY

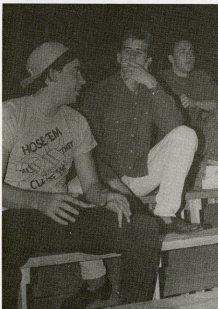
- **Music on the mall** sponsored by United Students for United Way
- 3:30 p.m.—**Tug-of-War**, sponsored by Phi Kappa Theta fraternity. tug-of-war pits behind Stokes Stadium. **Hands Across Campus** will immediately follow at the tug-of-war pits.

Count Me In



photo courtesy of Kirkville Daily Express

Joanne Jackson, co-chair of the annual United Way campus drive, addresses faculty and staff at the NMSU kickoff breakfast in the Student Union Building Oct. 5. According to Jackson, this year's theme, "United Way, it brings out the best in all of us. . . Count me in," is designed to show how the United Way benefits everyone in Adair County. The University goal for the 1988 drive is \$27,500. Lee Myers, educational advisor, serves as co-chair with Jackson.



Nine-Inning Comedy

The University Players' sophomore Jeff Huettman, senior Chad Dobbs and freshman Brian Stull rehearse a scene from their upcoming "nine-inning comedy" titled *Bleacher Bums*. The University Players will perform at 8 p.m., Oct. 11-15, in Baldwin Hall Little Theatre. Admission is free with an NMSU ID or advance tickets may be purchased for 50¢ at the SAB Office, SUB.

Northeast Today Staff

Editor in Chief Michelle Yost
Associate Editor Barbara J. Dietrich
Student Intern Angela M. Luby
Production Jay Smith
Photography Ann Maciel

The Oct. 25 issue of the *Northeast Today* will be a November/December calendar. Deadline for the calendar issue is 5 p.m., Oct. 19. Entries should be submitted on the Northeast Today forms available in the Public Relations Office, A/H 202.

This Week

10 MONDAY

- **SAB sign-up** for Excursion to the Renaissance Festival in Kansas City, Mo., SAB Office, SUB. Tickets are \$15 or \$12 with an SAB sticker.
- 8:30 a.m.-3 p.m.—**Flu shots** will be administered at the Student Health Clinic, McKinney Center, Monday through Friday. The cost is \$2 for students, faculty and staff.
- 3 p.m.—**"The Importance of Columbus,"** presented by Delno West, professor of American history at Northern Arizona University, SUB Alumni Room. West is sponsored by the Social Science Lecture Series.
- 5-10 p.m.—**Group pictures** for 1989 Echo yearbook, SUB Activities Room; also Oct. 11 and 12. The cost is \$15. Check Oct. 7 *Index* for scheduled times.

11 TUESDAY

- 8:30 a.m. and 1:30 p.m.—**College Level Examination Program (CLEP),** A/H 103; also Oct. 12.
- 5:30 p.m.—**Student Missouri State Teachers Association meeting,** Violette Hall 251. All education majors are welcome.
- 6 p.m.—**Student Member Section of the American Home Economic Association open meeting,** Pershing Building 225 (dance studio). A speaker will talk on self defense.
- 6:30 p.m.—**Society of Professional Journalists/Sigma Delta Chi formal meeting** for potential members, SUB 4. The meeting is open to all students interested in communications.
- 8 p.m.—**"Bleacher Bums,"** presented by the University Players, Baldwin Hall Little Theatre; also Oct. 12, 13 and 14.
—**Recital** by F. Gerard Errante, clarinetist, SUB Alumni Room. Admission is free. (see Notes for more information)

12 WEDNESDAY

- 3:30-4:30 p.m.—**"Techniques for Editing and Proofreading Drafts"** writing workshop, Writing Center, A/H 303; also Oct. 13.
- 4:30 p.m.—**"Are there adequate personal counseling opportunities**

on campus?," an informal discussion presented by the University Forum, fifth floor quiet lounge, Missouri South Residential College

- 5 p.m.—**S.T.A.R. application deadline,** A/H 205
- 6:30 p.m.—**German Club organizational meeting,** A/H 306. A short video on German culture will be shown and German door prizes will be given away. Everyone is welcome.
- **Political Science Club open meeting,** A/H 210. Bob Kuftrin, city manager of Kirksville, will speak on careers in city government. Everyone is welcome.
- 7 p.m.—**"How to Get Better Grades and Have More Fun!"**, presented by Steve Douglass, Baldwin Auditorium, sponsored by the Campus Crusade for Christ. Admission is free.
- **MENSA organizational meeting,** SUB 2. MENSA is a social organization for individuals who have established that their intelligence level is higher than 98 percent of the population by taking a standardized intelligence test. An ACT score of 29 or above fulfills the membership requirement.

13 THURSDAY

- 6 p.m.—**Student Nurses Association meeting,** Kirk Building hallway
- 8 p.m.—**Lyric Opera of Kansas City,** presented by the Lyceum Series, Baldwin Auditorium
—**"Gaining Control: Weighing the Consequences of the Desire to be Thin,"** presented by the BASH Clinic of St. Louis, Centennial Hall main lounge.
- 8:30 p.m.—**Psi Chi open discussion** on male/female relationships, SUB Alumni Room

14 FRIDAY

- **Last day to drop** full-semester courses without code
- **Canoe trip** sponsored by the Newman Center
- 7 and 9:15 p.m.—**SAB Matthew Broderick Film Festival** presents "Biloxi Blues," Baldwin Auditorium. Admission is \$1.50 or free with an SAB sticker.
- 8 p.m.-midnight—**Bridge night,** Missouri Hall cafeteria. Missouri South

Residential College invites University faculty, staff and students to learn and/or play bridge.

- 8-11:30 p.m.—**SAB Barn Dance,** Red Barn Park. Admission is free.
- 10:30 p.m.-2 a.m.—**Dance,** Kirk Gym, sponsored by Delta Sigma Theta and Zeta Phi Beta. Admission is \$1.

15 SATURDAY

- 8 a.m.—**Real Estate Licensing Examination (RELE),** A/H 103
- 8-8:30 a.m.—**CROP Hunger Walk registration,** Faith Lutheran Church. The 20-mile walk proceeds to Thousand Hills State Park and back. This is a community wide service project to raise money to fight world hunger. For more information call the Lutheran Student House at 665-6488 or Faith Lutheran Church at 665-6122.
- 8:30 a.m.—**Graduate Management Admissions Test (GMAT),** A/H 210
- 10 a.m.-6 p.m.—**SAB mud volleyball,** tug of war pits. The cost is \$15 per team or \$10 per team with four or more SAB stickers; also Oct. 16 from 2-6 p.m.
- 7 p.m.—**SAB Matthew Broderick Film Festival** presents "War Games," Baldwin Auditorium. Admission is \$1.50 or free with an SAB sticker.
- 9 p.m.-2 a.m.—**International Club dance,** Kirk Gym. Admission is \$1. Door prizes will be awarded.
- 9:15 p.m.—**SAB Matthew Broderick Film Festival** presents "Ferris Bueller's Day Off," Baldwin Auditorium. Admission is \$1.50 or free with an SAB sticker.

16 SUNDAY

- **Alcohol Awareness Week** begins
- 7:15 a.m.—**SAB Excursion** to the Renaissance Festival, Kansas City

