

N O R T H E A S T T O D A Y

October 6, 1986

THE KANSAS CITY STAR.

Schools plan puts Ashcroft in spotlight

Jefferson City—Imagine Missouri as a national leader in public education.

Don't laugh.

Despite the state's lackluster reputation in supporting education, the state is blazing trails that have gained national attention.

For example, Gov. John Ashcroft recently convinced his fellow governors at the summer meeting of the National Governors' Association to approve a plan that would require each state to establish a mission for each higher education institution and then devise a system to assess how well the taxpayers' money has been spent there.

"In assessment we're talking about how much education we are giving and using the assessment as a feedback mechanism to say internally how do we improve what we are doing," the governor explained.

The governor's ideas were part of a comprehensive education plan approved by the governors and presented to the nation two weeks ago. The report from Mr. Ashcroft's task force was based in part on a pioneer system developed at Northeast Missouri State University in Kirksville, Mr. Ashcroft said. The school has been featured in professional educational literature for its high-quality programs and students. It also was highlighted this summer in a *Money Magazine* article that listed 10 schools outside the Ivy League at which the magazine asserted students can receive an Ivy League education.

Missouri, under the governor's direction, also is poised to become the first state in the country to adopt a system that requires each college to define its mission and adopt a precisely focused system to determine how



Rich Hood
The Star's political columnist

well that mission is being met.

So, what's new about colleges "assessing" or "testing" their students?

Plenty, the governor insists. He's not talking about pop quizzes concocted by overworked professors. He's talking about systematic, comprehensive, precisely targeted tests to determine if a college is doing its educational job.

Mr. Ashcroft said such measurements are needed for higher education to perform better, especially in view of national test scores that have declined since 1964.

Better results also are mandated by the massive amounts of public money annually spent on higher education alone in Missouri.

The state appropriated \$441,461,540 this year for public community colleges, four-year colleges and universities, records show. That doesn't include money for capital improvements. State spending for higher education rose \$122 million in the last three years, an overall increase of 39 percent.

Mr. Ashcroft has two national platforms from which to present his case that colleges and universities should

be more accountable for the public money they receive.

He is chairman-elect of the Education Commission of the States. And he is chairman of the National Governors' Association Task Force on College Quality, the group that presented the study to his fellow governors. (Another member of that task force is Kansas Gov. John Carlin.)

Mr. Ashcroft said the association chairman, Gov. Lamar Alexander of Tennessee, asked more than a year ago for him to lead the study of college quality.

One reason may have been Mr. Ashcroft's experience as a college teacher, but Mr. Ashcroft believes a more important reason was the reputation of Northeast Missouri State which he said "is literally a national model."

"We've had inquiries from Western Europe asking us about how they're doing things at Northeast Missouri State University and asking assistance in establishing similar assessment programs in Europe."

The governor said teachers at Kirksville are enthusiastic about the testing program, and the state-supported school routinely rejects two applications for every one it accepts.

He is pleased that other governors are reflecting what he sees as a national trend to expect more from public education and insist that more be provided.

In essence, he said, the other governors at Hilton Head, S.C., bought his oft-expressed motto that when a state is appropriating education funds, the goal should be "not just more money for education but more education for the money."

Mosteller Took Liberty Leave

Remember Liberty Weekend... the renovated Statue of Liberty, the tall ships, Ron and Nancy, Liza Minelli, Kirk Douglas... and NMSU Assistant Professor of Voice Paul Mosteller?

Mosteller appeared in the national event, July 5, in New York City's Central Park as a chorus member for the New York Philharmonic Orchestra under conductor Zubin Mehta. Liberty Weekend was only a small part of a year-long sabbatical the NMSU professor took to New York City last year to develop himself as a performing singer.

"As a teacher of applied music, my effectiveness depends, in part, on my continued performing activity on and off campus," Mosteller wrote in his sabbatical leave request.

While in New York City, Mosteller performed several times with the New York Philharmonic Orchestra. He also sang show-case operas, including a New York premiere, was with the American Ballet Theatre and the New York Choral Artists and participated in the St. Thomas Church choir.

Mosteller's performances allowed him to observe music greats: Itzhak Perlman, Yo Yo Ma, Placido Domingo and Luciano Pavarotti.

"Watching top musicians, some of them tops in the world, was an invaluable experience professionally and personally," he said.

Mosteller also spent a three-month residency on Long Island working with high school students on Bach aria interpretation and performance. His educational vacation provided unexpected fringe benefits. The break allowed him, he said, to put his life and career in perspective.

"I got away from the routine of teaching. That helped me get a clearer sense of identity which has helped me better communicate and listen to my students," he said.

Mosteller's personal and professional growth during the sabbatical will benefit the students and the University. The sabbatical increased Mosteller's public visibility which he said adds credibility to the vocal department and the Division of Fine Arts at NMSU.

Mosteller said he's impressed with the vocal students NMSU is attracting.

"The quality of student here, especially this year, is the best group of voice students I've had," he said.



Assistant Professor of Voice Paul Mosteller is back teaching music to students like freshman Dan Cole. Mosteller was on sabbatical in New York City last year.

Velasco—An All-American Friend

NMSU golf coach Bill Richerson should have Jose Fabres do all his recruiting.

Last Christmas, Fabres, a junior on the golf team, knew Richerson needed a golfer and called long-time friend J.P. Velasco.

Fabres and Velasco grew up in Santiago, Chile, and both played what their friends call "the old people's game." Now, they would play together in the States. Richerson had his golfer.

And what a golfer he had.

Velasco played on the junior and senior Chilean National Teams which played all over the world. He had also competed in two World Cups.

The 23-year-old freshman's international experience brought national attention to the Bulldogs. His 298 strokes in the four-day NCAA Division II national meet in Tarpan Springs, Fla., tied him for fifth and landed him a second-team All-America berth.

"I believe day-in and day-out, J.P. is one of the best golfers in Division II golf," Richerson said.

Not bad for someone who came from a country where there are no public golf courses.

"In Chile, if you don't belong to a golf club, you can't play," Velasco said.

Velasco has been playing golf for a long time. He's 23 now, and he started playing regularly when he was 10. His whole family plays, but that doesn't stop people from asking why he plays the "funny" game.

"The people always asked me why I didn't play tennis or soccer... golf in Chile is kind of like soccer in the U.S., it's not that popular," Velasco said.

What is popular in Chile besides soccer, is agriculture. Velasco has already earned a degree in agriculture from a university in his homeland, and is studying agri-business at Northeast. While golf is one of his passions, Velasco realizes the importance of an education.

"A degree from the U.S. is very important back home... I want to finish my degree first, before I worry about golf," he said.

As a freshman All-American, Velasco shouldn't have too many worries. His team

finished 14th in the nationals last year, and Velasco is looking forward to an even better season this spring.

"I think we're going to be really good... we've played in three tournaments this fall, and we've finished first in two of them," Velasco said.

As a freshman, Velasco has many rounds of golf left for NMSU. Who knows, maybe Richerson will ask for another golfer for Christmas. If he needs one, maybe Fabres has another friend.

Eleven good reasons to help NMSU reach its United Way Drive goal of \$22,000:

- Adair County Chapter American Red Cross
- Boy Scouts of America
- Community Opportunities, Inc. Sheltered Workshop
- Girl Scouts of America
- Kirksville Counseling Clinic
- Kirksville Crisis Intervention Service
- Kirksville Day Care Center
- Nutrition Site
- Retired Senior Volunteer Program
- Salvation Army
- YMCA

Inventor Sets the Pace



Earl Bakken, developer of the first wearable, external, battery-powered pacemaker, was the next best thing to being there in the Alumni Room of the Student Union Building, Sept. 26.

Bakken spoke to a Survey of Business class via telephone in a lecture describing the development of the pacemaker.

Bakken founded Medtronic in 1949 in Minneapolis to service medical instruments for hospitals. Over the years, Medtronic

survived near bankruptcy and became the leading maker of pacemakers and a pioneer in the bio-medical field with sales of more than \$400 million and branch offices all over the world.

Approximately 40 students in a business class listened to Bakken explain the evolution of the pacemaker and the technological advances that made the invention possible. Bakken received an "Engineering for Gold" Award from the National Society of Professional Engineers in 1984, honoring the pacemaker as one of the 10 most outstanding engineering achievements in the last 50 years.

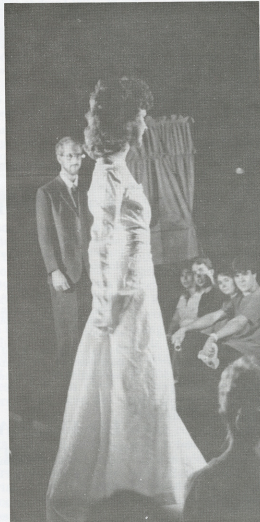
The University of Minnesota graduate also received the Minnesota Business Hall of Fame Award in 1978, the Outstanding Achievement Award from the University of Minnesota in 1981 and a Centennial Medal by the Institute of Electrical and Electronic Engineers in 1984.

Bakken was the first tele-lecturer this year. More than 250 tele-lectures have been set up by Assistant Professor of Business Pat Ellebracht since they began in 1971. Those interested can listen to a tape of Bakken's lecture in Ellebracht's office, Violette Hall 119.

A Flood of Homecoming Activities



Blanton-Nason Hall freshman Natalie Kirn waits in her grocery-cart chariot for the beginning of the Homecoming bed races, Oct. 1. The Dobson Hall Senate team won the race, with Blanton-Nason's award-winning neo-Roman bed finishing second.



Sophomore Becky Albertson models a wedding gown for the Homecoming fashion show, Sept. 29, in the SUB, Georgian Room. Approximately 50 models donned fashions from 1906 to 1986 in the show sponsored by Gamma Phi Delta social sorority. Clothing was donated by campus and community members.



Members of the Alpha Sigma Gamma service sorority end their pep-rally skit with a cheer for the football Bulldogs at the skit tryouts in Baldwin Auditorium, Sept. 29. They performed their skit at the pep rally, Oct. 3, along with Blanton-Nason residence hall members and Sigma Sigma Sigma and Alpha Sigma Alpha social sororities.

6 MONDAY

Last day to drop full-semester courses without code.

- 8:30 a.m.—**Phi Alpha Theta** international honor society in history bake sale, A/H corridor.
- 10 a.m.—3 p.m.—**1986 Echo Yearbook** distribution, SUB. Cost is free for students who carried a minimum of 12 hours last fall and spring. Today through Wednesday.
- 1:30 p.m.—**Sophomore Testing Program** (ACT/Comp), SUB.
- 6 p.m.—**International Club** meeting, Baldwin Hall 285. Sandra Hernandez presents a program on El Salvador.
- 6-9:30 p.m.—**"The Wheel of Fortune,"** sponsored by the Speech Pathology Organization, SUB, Activities Room. The public is invited. Door prizes will be awarded, and proceeds go to NEMO Headstart.
- 7 p.m.—**Pre-Vet Club** open seminar, Science Hall 220. Dr. John Nelbregge will present "Home Pet Care." Organizational meeting will follow the presentation.
- 7:30 p.m.—**Newman Center** four-stage Catholic information process, Newman Center, 414 W. Dodson. For information, call 665-4357 or 665-2466.

7 TUESDAY

- Penn-Daniels Inc.** interviews. For more information, contact the Career Planning and Placement Center, McKinney Center.
- 1 p.m.—**Sophomore Testing Program** (ACT/Comp), SUB.
- 5 p.m.—**Psi Chi** national honor society in psychology meeting, A/H 206. Andy Jackson will speak on "Domestic Violence Intervention."
- 6 p.m.—**Association for Childhood Education** International informational/organizational meeting, SUB 4. All people interested in child care are welcome. Refreshments will be served.
- 7 p.m.—**National Organization for Women** open meeting, A/H 304. Beth Wheeler, candidate for the Missouri House of Representatives, will speak on "Political Women: The Campaigning Process."
- 8 p.m.—**Clothes for a Summer Hotel**, a play by Tennessee Williams, performed by the University Players, Baldwin Hall, Little Theatre. Students and staff admission is free. Advance reserved seats are available for 50 cents in the SAB office, SUB. Play runs through Saturday.

8 WEDNESDAY

Farmers Home Administration and Prudential Insurance interviews. For

THIS WEEK

- more information, contact the Career Planning and Placement Center, McKinney Center.
- Intramural Sports Department** volleyball roster deadline, Pershing Building 309. 1-M office hours are 12:30-4:30 p.m., Monday through Thursday.
- 1:30 p.m.—**Sophomore Testing Program** (ACT/Comp), SUB.
- 6 p.m.—**Phi Lambda Chi Dames** informational meeting, SUB, snack bar. All interested women are invited to attend.
- 6:30 p.m.—**Forensics Institute** organizational meeting, A/H 300. Institute will select topics for this semester's discussion and debate series.
- 7:30 p.m.—**World Peace Group** open meeting, SUB 5. All interested people are invited.
- 7:30 and 9:30 p.m.—**"Altered States,"** sponsored by the Psychology Club, Baldwin Auditorium. Admission is \$1.50.

9 THURSDAY

- Moore & Associates, P.C.** interviews. For more information, contact the Career Planning and Placement Center, McKinney Center.
- 5:30 p.m.—**French Language Table** meeting, Ryle Hall cafeteria, special dining room. French language instructors and assistants will be present. All interested students are welcome.
- 6:30 p.m.—**International Association of Business Communicators** last open meeting, SUB, Tangerine Room.

10 FRIDAY

- McGladrey Hendrickson & Pullen** interviews. For more information, contact the Career Planning and Placement Center, McKinney Center.
- 7 and 9-15 p.m.—**"White Nights,"** SAB movie, Baldwin Auditorium. Admission is \$1.50 or free with an SAB sticker.

11 SATURDAY

- 7 a.m.—**Octoberfest Wine Festival** departure for Hermann, Mo., A/H circle drive. Tickets are \$6 or \$3 with an SAB sticker

- and are available in the SAB office, SUB.
- 9:30-10 a.m.—**Walk-a-thon**, sponsored by Delta Sigma Pi professional business fraternity, registration, lot on the west side of Old Towne Square. Proceeds go to construction of a park at that location. Sponsor sheets are available at Footposts, 120 W. Harrison, and the SUB office.
- 10 a.m.—noon—**Walk-a-thon**, sponsored by Delta Sigma Pi professional business fraternity, lot on the west side of the Old Towne Square.
- 11 a.m.—**Women's soccer** vs. University of Missouri-Rolla, soccer field.
- 1 p.m.—**Men's soccer** vs. University of Missouri-Rolla, soccer field.

NOTES

- Students who are interested in a self-paced section of math lab for the spring semester should contact John Bartling, associate professor of mathematics, as soon as possible at 785-4550 or 785-4557. Students who may benefit from a self-paced format include: (1) those needing only a brief review over the first several chapters, (2) those wishing to accelerate their progress, (3) those preparing to retake the ACT.
- Windfall** campus literary magazine is accepting submissions of poetry and fiction for its fall issue. Send your entries to: Windfall, SUB, NMSU. Deadline is Nov. 10.
- The Campus Bookstore** is collecting books written by NMSU faculty members. Faculty authors are asked to contact Sherry Pollard, 785-4211.
- First South-Ryle Hall**, "Field House," is accepting entries for its "Bomb" show on Nov. 2. All students and faculty are encouraged to perform. Entry deadline is Oct. 15. For information, contact Lori Adkins, 785-5719.
- First South-Ryle Hall**, "Field House," is selling laundry packets containing enough soap and softener for one load of laundry. Cost is 50 cents, and packets may be purchased from any "Field House" resident.
- Psi Chi** national honor society in psychology is sponsoring a bake sale from 8 a.m.-2 p.m., Oct. 13, in the A/H corridor. Cost for each item is 25 cents.
- Michael Shaughnessy**, a visiting artist, will do an installation, Oct. 13-16, in the NMSU Art Gallery, Baldwin Hall 218. The piece will remain in the gallery through Oct. 24. Gallery hours are 9:30 a.m.-5 p.m., Monday through Friday.