

# NORTHEAST

a weekly newsletter for students, faculty & staff  
Northeast Missouri State University

Vol. 21 No. 6

October 4  
1993

## Ceremony to Mark Completion of Pickler Memorial Library

The library on the Northeast campus has been a symbol of change and endurance since the first library building was constructed in 1901.

When the old Baldwin Hall and the Library Building burned in 1924, Samuel M. Pickler gave \$25,000 toward a new building. He later donated funds to furnish it.

The new building was named for the benefactor. A strong supporter of Northeast, Pickler served on the faculty from 1868 to 1873 when he became editor and proprietor of the *Kirksville Journal*. His occupations included teacher, editor, merchant, lumber contractor, land owner, money lender and banker. Pickler also served as member of

Northeast's Board of Regents from 1899 to 1905, commissioner of Adair County, mayor of Kirksville, and Adair County representative to the state legislature.

It was not until 1967 that Pickler Library was expanded. Twenty years later, Northeast began a \$15 million renovation and addition project which would double the size of the library, adding 64,000 square feet. The present facility is 140,000 square feet.

A dedication ceremony commemorating the completion of Pickler Memorial Library will be held at 10:30 a.m. during Homecoming on Oct. 9 in front of the Library (facing the Quadrangle). □

You are cordially invited to the  
Dedication of the  
Pickler Memorial Library  
Renovation and Addition  
10:30 a.m. October 9  
in front of the Library

❖ Speakers ❖

President Russell Warren  
Larry Rutledge

Board of Governor President

Senator Norman Merrell

Virginia Stanton

granddaughter of Samuel Pickler

## Lauer Named Alumnus of the Year

Frederick (Fritz) Lauer has been named Alumnus of the Year for 1993 and will be honored Oct. 8 at 7:30 p.m. during the Homecoming All-Alumni Banquet in the SUB Georgian Room.

Lauer is a 1950 graduate of Northeast, earning a bachelor's degree in education. He then went on to

earn a doctor of dental surgery degree from the University of Missouri-Kansas City in 1956.

Although he kept busy practicing dentistry for about 25 years, Lauer still made sure to keep a hand in education. He served on the Board of Education in Liberty, Mo., for six years and has worked on institu-

tional goals and priorities projects for Northeast in the past.

His largest contribution to Northeast, however, came during his service on the NMSU Board of Governors. After being named to the Board in 1986, he served as both secretary and vice president until Nov. 1990.

Lauer retired in 1988 and now lives in Raytown, Mo., with his wife, Grace. Their two children, Fred and Lisa, both live in Kansas City, Mo.

Tickets for the All-Alumni Banquet are available for \$10 in the Alumni/Development Office, McClain Hall 106. □

# McNair Program Completes First Year

Dr. Ronald E. McNair

was one of the seven astronauts who died when the Challenger exploded one minute and 13 seconds into its 1986 flight.

Last year, 25 Northeast students were selected to participate in the first Ronald E. McNair Post-Baccalaureate Degree Program. The program is designed to encourage first-generation students, low-income students, women, minority, and students with disabilities to pursue a doctoral degree. Selected students attend seminars on selecting a graduate school, the different types of programs, what to expect in graduate school, and other informative topics.

The program, directed by Emmanuel Nnadozie, assistant professor of economics, and Ave Alvarado, director of Multicultural Affairs, is funded by a

\$42,000 grant for three years from the U.S. Department for Education.

Each student chooses a faculty mentor with a doctoral degree. Nnadozie has received letters from professors saying how enriching the experience is.

"I think it makes professors more understanding of students' needs," Nnadozie said.

Mentors and students discuss goals and get to know each other.

Mentors also provide academic support, informing students of tutoring and counseling options. One of the objectives is

to raise the students' grade point averages. In addition to visiting graduate schools, students have the opportunity to travel with their mentors.

All McNair scholars develop a research propos-

al. Ten students are selected for the 10-week summer research program. In this part of the program, students complete their research projects, supervised by a faculty member, and attend three workshops designed to help in the research.

At the Penn State McNair Summer Undergraduate Research Conference, Sheila Chhutani, Laura Muhlenbruck

and Darnell Ware presented their projects.

"We were told that our students were exceptional," Nnadozie said.

"It is active learning in every sense of the term," said Nyamapfene. "The hands-on introduction of research methodology will greatly expedite and enhance my pursuit of a social science degree, as well as my goals of attaining master's and doctoral degrees, securing a position as a university professor, researching and publishing on social issues."

The Multicultural Affairs office hosted the first annual Ronald E. McNair Undergraduate Research Presentation and Luncheon on Sept. 28.

Students may apply for the McNair Program as a sophomore, junior, senior or graduate student. Interested students should contact Bertha Thomas at 785-4142. □

## 1993-94 McNair Scholars

Karla Bennett  
Karen Boyd  
Elondria Byndom  
Brian Carter  
Sheila Chhutani  
Hope Fox  
Malati Harris  
Nicole Hudson  
Marla Ingram  
Jean Ly  
Lisa Lee  
Sharon Milsap  
Laura Muhlenbruck  
Nyasha Nyamapfene  
Darren Osborne  
Vincent Potts  
Sharon Ray  
Maisie Howard  
Pamela Russell  
Delora Smith  
Shann Smith  
Sean Stalling  
Finnete Swift  
Tamara Vega  
Darnell Ware

# Legislative Internships Available In Spring

Northeast students have been working alongside Missouri legislators since the early 1970s. This spring, the tradition will continue when approximately 15 student interns are sent to the Second Session of the 87th Missouri General Assembly.

Interns work closely with a legislator as an executive assistant performing assigned duties. There are a variety of responsibilities to choose from, such as communicating with con-

stituents, researching bills or writing newsletters. Student's interests are matched according to the required duties of a legislator.

Interns work in Jefferson City starting in early Jan. and continuing through the end of the session in mid-May. The program offers 15 hours of credit and financial aid is available.

Learning how the government works and seeing it in action are just a few benefits of the job. Michele

Petot, a former intern to Rep. Katie Steele, handled constituent's concerns, researched bills and organized the Human Symposium, a day of networking between health care and human services providers. She encourages students of all majors to apply because of the communication and organizational skills she developed. Accounting major Jeanne Kramer organized state officer meetings, communicated with constituents and

wrote newsletters for Rep. Neil Molloy. "It is a lot of hard work and responsibility, but it is also rewarding. Its a chance to get out into the real world," said Kramer.

Students must have a minimum 2.75 GPA and have completed at least 60 credit hours for eligibility. All majors are welcome to apply. More information is available in the Center for Service Learning, Kirk Memorial 203. The application deadline is Oct. 8. □

# Northeast Notables

**Seymour Patterson**, assistant professor of economics, recently returned from a Full-bright scholarship at the University of Botswana, Africa. While there, Patterson had an article titled "Panama's Exports and Its Sovereign Debt" published in the June 1992 edition of *The Atlantic Economic Journal*. *Barclays Botswana Economic Review* published another article titled "Benefits from Better Pay and Working Conditions" in their Volume 3, Number 4 edition. The January-March 1993 edition of the *Indian Economic Journal* featured an article titled "Internationally Mobile Capital." The University of Botswana *Economic Digest* published Patterson's article "The Trade Productivity Growth Connection" in their March 1993 edition.

**Gary Sells**, professor of physiology, attended the joint meeting of the American and Canadian Society of Plant Physiology at Minneapolis July 31 - August 3. He participated in the teaching symposium of the society which focused on using active learning strategies in the teaching of plant science courses.

**Maria Di Stefano**, associate professor of physics, recently attended an NSF-sponsored workshop at MIT titled "Advanced Undergraduate Training in Experimental Physics."

**Michael Tannenbaum**, assistant professor of biology, reviewed a manuscript for the *Council on Undergraduate Research Quarterly*.

**Jim Thomas**, professor of English, has had three poems accepted for publication: *California Quarterly* will publish "Wild Foods"; *Poetry Wales* has taken "Stirring May-Apples"; and *Rolling Coulter* has selected "St. Patrick's Day in the Hotel Pliska."

**Jim Turner**, associate professor of accountancy, presented a paper titled "Mediation of Habitat Disputes under the Endangered Species Act" at the 64th annual meeting of the Academy of Legal Studies in Business at Colorado Springs, Colo., in August.

**Dean Van Galen**, associate professor of chemistry, visited Norway in August as part of an effort to develop a science-based study abroad program at NMSU. As a result, a three-week course, in which students will work with Norwegian students in studying heavy metal pollution in a fjord near Odda, Norway, is being planned for next August.

Northeast students **Sheila Chhutani**, **Laura Muhlenbruck** and **Darnell Ware** presented their summer research projects at a national conference at Penn State. This was made possible by the Ronald E. McNair Post-Baccalaureate Achievement Program.

## Companies that will attend Career Expo '93

◆ Attend EXPO to sign up for Oct. 13 interviews held in the SUB.

◆ Resumes due for prescreening Oct. 6.

AAA Auto Club of Missouri	Missouri State Highway Patrol
ACTION	Moberly Regional Medical Center
Adair County Family YMCA	Montgomery Ward
Aldi Foods	NMSU/Army ROTC
American Multi-Cinema Inc.	NMSU/Upward Bound
Associated Electric Cooperative, Inc.	Northeast Missouri Community Action Agency
Associated Press	Missouri Dept. of Health
Associated Rehabilitation Services	Missouri Dept. of Social Services
Boone Hospital Center	Northwestern Mutual
Brethren Volunteer Services	Norwest Financial - Keokuk
Butterfield Youth Services	Overland Park KS Police Dept.
Caremark International	People to People International (UMKC)
Carroll's Foods of Virginia	Preferred Family Healthcare
Cerner Corporation	Principal Financial Group
Chaddock	Prudential Insurance
Columbia Police Department	Radio Shack/Tandy Corp.
Communique Advertising & Public Relations	Rent-A-Center - Kansas City
Cumberland School of Law/Samford University	Rent-A-Center - St. Louis
Drake University Law School	Ritz-Carlton - St. Louis
Dun & Bradstreet	St. Anthony's Medical Center
Express	St. John's Mercy Medical Center
Fashion Bug	St. Louis University Hospital
Federal Reserve Bank of Kansas City	St. Luke's Hospital
Federal Reserve Bank of St. Louis	State Farm Insurance Cos. - Bloomington
First Heartland Corporation	State Farm Insurance Cos. - St. Louis
First Investors Corporation	The Equitable
Grim Smith Hospital	The Ujohm Company
Hannibal Regional Hospital	Tradehome Shoes
Harry S. Truman VA Hospital	U.S. Army Audit Agency, Central Region
IBP, Inc.	U.S. Army Nurse Corps
IDS Financial Services	U.S. Army/Army Reserve
Iowa Department of Personnel	U.S. Federal Bureau of Investigation
Iowa Department of Public Safety	U.S. Marine Corps Officer Selection
J.C. Penney Co., Inc.	U.S. Navy Recruiting District
Jacks	U.S. Office of Personal Management - St. Louis
Kirkinney Shoe Corp.	U.S. Peace Corps
Kirksville College of Osteopathic Medicine	Union Pacific Technologies
Kirksville Daily Express	University of IA - Hospitals & Clinics
KOMC/Laughlin Pavilion	University of MO - Columbia Hospitals & Clinics
KIRK/KRXL Radio	University of MO - Columbia Human Resources
KTVO Television	USDA/APHIS Plant Protection & Quarantine
Lady Foot Locker	USDA/Farmers Home Administration
Life Investors	USDA/Soil Conservation Service
Lincoln NE Police Department	Venture Stores, Inc.
McDonnell Douglas Aerospace	Walgreens
McGladrey & Pullen	Washington University School of Medicine
McLarney Manor	Western Auto
May Dept. Stores Co. (Famous Barr)	
MetLife	
Midwest Marketing & Management	
Missouri Assn. of Nurse Anesthetists	
Missouri Department of Corrections	
Missouri Dept. of Veterans Affairs - St. Louis	
Missouri Div. of Child Support Enforcement	
Missouri Div. of Employment Security	
Missouri State Auditor's Office	

# Homecoming Week

## 4 Monday

◆ 7 p.m.—Pre-Physician's Organization meeting, Science Hall 274

## 5 Tuesday

◆ noon-dark—Dobson sidewalk street graffiti  
◆ 4-6 p.m.—Olympics, Red Barn Park  
◆ 7-8 p.m.—Market Magic Show, Main Street Market  
◆ 7:30 p.m.—Reader's Roundtable/Windfall Performance Hour, Ophelia Parrish 115A  
◆ 8 p.m.—Lip Sync, Kirk Gym  
◆ 8-10 p.m.—"New Age and Christianity," lecture by Dr. Philip LeMasters, 903 S. Davis  
◆ 8:30 p.m.—Campus Ministry International's Bible Study, Ophelia parish 208

## 6 Wednesday

◆ 4-9 p.m.—Homecoming Happy Hour, Town Square  
◆ 4:30 p.m.—"Covariant, Contravariant, and all that stuff," by Dr. David Chyba,

Science Hall 011  
◆ 6 p.m.—France/Quebec Study Abroad Panel, sponsored by Pi Delta Phi, Ophelia Parrish 213  
◆ 7 p.m.—Lady Bulldog Volleyball vs. Northwest Missouri State, Pershing Arena  
◆ —International Association of Business Communicators (IABC) meeting, Ophelia Parrish 218  
◆ 9 p.m.—Late Night with Dobson

## 7 Thursday

◆ 11 a.m.-4 p.m.—Bar-B-Que, pie-eating contest, and bazaar, on the Mall  
◆ 1-4 p.m.—Mini-Golf, on the Mall  
◆ 4:5-30 p.m.—Trivial Pursuit, Blanton/Nason Courtyard  
◆ 4-8 p.m.—Scavenger Hunt, SUB fountain  
◆ 5:30-7:30 p.m.—Slam Fest, Pershing Arena  
◆ 7:30-11:30 p.m.—Karaoke, Mainstreet Market

## 8 Friday

◆ 5 p.m.—"The Bishop's Beggar," read by Andy Hillgartner, the University Clubhouse, 516 E. Patterson, open to faculty and staff  
◆ 6 p.m.—Homecoming Skit Competition and Coronation, Baldwin Auditorium  
◆ 7:30 p.m.—All-Alumni Banquet, SUB Georgian Room  
◆ 8-9 p.m.—Pep Rally/Bonfire, Pershing

## 9 Saturday

◆ 8 a.m.—5K Run, Stokes Stadium  
◆ —Alumni Association Board meeting, SUB Conference Room  
◆ 9 a.m.—Homecoming Parade, Franklin Street  
◆ 10:30 a.m.—Pickler Memorial Library Addition Dedication  
◆ 11 a.m.-1:30 p.m.—Tailgate Party and Chillfest, Red Barn Park  
◆ 12 p.m.—Lady Bulldog Soccer vs. Southwest

Baptist  
◆ 2 p.m.—Bulldog Football vs. Emporia State University, Stokes Stadium  
◆ 6-7:30 p.m.—"Contra Dance," sponsored by Northeast Missouri Folk Dance Society, Ryle Hall main lounge  
◆ 8 p.m.—comedian George Wallace, Baldwin Auditorium, \$5

## 10 Sunday

◆ 9 a.m.—Sixth Annual Bulldog Classic Golf Tournament, Kirksville Country Club  
◆ 2:30 p.m.—Saint Louis Symphony Orchestra, Baldwin Auditorium, free to students and faculty; \$5 for adults, \$3 for school children  
◆ 3 p.m.—Unique Ensemble Gospel Choir concert, SUB Activities Room

## 11 Monday

◆ 5:30 p.m.—Northeast Leadership Conference Planning Committee meeting, SUB 5

## Notes

Cardinal Key is selling raffle tickets and homecoming buttons for \$1, until Oct. 9. Contact any member or call 785-7180 for details.

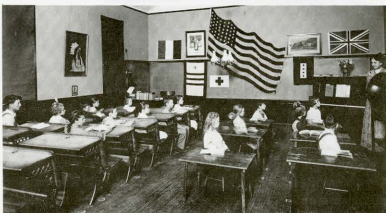
Freshmen Records from the Delta Chi Fraternity will be handed out Oct. 6 from 10:30 a.m.-1:30 p.m. in the SUB.

Bright Flight checks are in

at the cashier's window in McClain Hall. You must be full-time and bring a picture I.D. to sign for your check.

Applications for Who's Who Among Students in American Universities and Colleges are due Oct. 8 in Missouri Hall 120.

Shirley Simmons' "A Sense of Community" is on display until Oct. 8 at the University Art Gallery.



Porter School: A Vision Re-Visited is on display this week in Pickler Memorial Library, second floor gallery. Porter School, a one-room school located north of Kirksville, was nationally and internationally known in the years preceding World War I as the "model rural school."

## Child Development Center Openings Available

The Child Development Center (CDC) provides a high quality early childhood program for children between the ages of two and one-half to six. The CDC also provides a setting for research and active learning opportunities for university students. Building on an understanding that all aspects of the child's growth and development are equally important, the program is structured to foster cognitive, language, socio-moral, emotional, physical and creative development. With play as the core of the program, curriculum expe-

riences emphasize learning as an active, integrated, continuous process. Teachers prepare the environment for children to construct knowledge through active exploration and interaction with other children, adults and materials. The curriculum is infused with a multi-cultural, anti-bias perspective. The CDC is licensed by the state of Missouri and is currently engaged in the self-study process leading to accreditation by the Missouri Center for Voluntary Accreditation for Early Childhood Programs.

Enrollment preference is given to NMSU employees and students. Parents may select either the half or full day program. New this year is the afternoon after kindergarten program. Children may be enrolled for the academic year or the calendar year. The CDC currently has openings for five preschool children and 10 kindergarten children. For more information, or to schedule a visit, call Sue Novinger at 785-4479. □

## Benefits for Part-time Employees

The new fringe benefits for part-time employees will provide vacation time, sick leave, and holiday pay on a proportionate basis. These benefits became effective July 1, 1993, and will accrue from that date. The benefits will be applicable to employees who regularly work at least half-time schedules through the entire fiscal year. The benefits are not applicable to employees who work full-time during parts of the fiscal year, employees serving under contracts for specific periods of less than twelve months, temporary employees, or student workers. □

## July Employee of the Month



Albert McLin

Albert McLin is the July Employee of the Month at NMSU. He takes pride in his work and considers it an honor to receive the award. He has been employed with the University's physical plant since 1977.

His nomination stated: "He fulfills any request made of him, and does it promptly and efficiently. He has a very positive impact on the students who pass through his work area. His work is a fine example of commitment to quality. He teaches the importance of always working to the best of our abilities, the importance of commitment to quality, and the significant role every member of our campus fills."

McLin resides in Kirksville and enjoys woodcarving in his spare time. □

## Welcome New Staff

- ◆ Chet Bailey  
*Microcomputer Support Technician (Computer Services)*
- ◆ Dave Franke  
*Electronics Technician*
- ◆ Tammy Gorman  
*Division Secretary Business & Accounting*
- ◆ Warren Kloforn  
*Administrative Asst. Residential Colleges*
- ◆ Mark Lee  
*Chief of Administrative Services*
- ◆ Judy Lundberg  
*Director of Grants & Sponsored Programs*
- ◆ Joe Moeller  
*Director of Development (Advancement)*

## NMSU Participates in Second Annual Casual Day for UCP

For the second year in a row, Northeast participated in the National United Cerebral Palsy Casual Day in mid June. This year, more than \$2 million nationally and \$4,500 locally was raised for UCP, exceeding last year's numbers of \$1 million nationwide and \$4,000 locally.

Employees who chose to participate donated \$5 and were allowed to dress casually for the day. Local sponsors of the event were KTVO and the El Kadir Shrine Club. Local businesses throughout the community participated in the event.

Northeast employees generously gave a total of \$455 to this effort. We take this opportunity to thank all who participated. A special thank you to the Campus Coordinator Rhonda Noe, and division coordinators: Judy Bruner, Kathy Butler, Joyce Byars, Connie Helton, Judy Howerton, Jackie Kelly, Joan Martin, Paula McCartney, Wynona Murphy, Lori Murray, Jim Nevins, Marsha Redmon, Cynthia Rowland, Sandy Schneider, Charlotte Smith, Jennifer Snyder, Kim Watson, Cathy Wiggins and LeAnn Yantis. □

## ID Card Update

The hours available to have University identification cards made are as follows:

Mondays	9 a.m.-1 p.m.
Tuesdays and Wednesdays	8 a.m.-2 p.m.
Thursdays	1-4 p.m.

The cards can be used to get tickets for the athletic events and the Lyceum series as well as for discounts at the Campus Bookstore, motels, etc. The new credit card-size IDs include the holder's photo.

If you have any further questions, please contact Denise Canzonera at 785-7436 in the Student Union Building. □

## Adamson New to Centennial Hall

Peter Adamson is the new assistant hall director in Centennial Hall. He was raised in the small town of Parksburg, Iowa, population approximately 2000 people. Peter has a Bachelor of Arts Degree in Psychology from the University of Northern Iowa, and he also has



Peter Adamson

extensive computer experience.

Peter has had various part-time jobs at the University of Northern Iowa ranging from custodial duties to work in the Admissions office.

His outside interests include singing, dancing, and playing the trombone/euphonium. Peter is also active in the theatre. □

### ★★★ COUPON ★★★ MAIN STREET MARKET

A FREE MEDIUM DRINK  
WITH THE PURCHASE OF ANY SANDWICH

Compliments of  
Morrison's Hospitality Group  
Good thru October 31, 1993

### Current Job Listings

- ◆ Temporary Carpenter Physical Plant
- ◆ Vice President Academic Affairs Secretary
- ◆ Library Periodicals Department Secretary
- ◆ Part-time Telecommunicator Department of Public Safety

### Announcing:

Dr. Roy Domenico, Social Science, and his wife Robin, a son, John Palmer, September 21, 1993.

### In Memoriam

Lester D. Fox, brother of Jerry Fox, Physical Plant, Sept. 22, 1993.

## NEWS ON THE CAFETERIA PLAN

A cafeteria meeting to inform employees about the program will be held on campus Nov. 2 in the SUB Alumni Room. The meeting times will be 9 a.m. and 2 p.m.

All employees who participate at the present time and all other employees who have the family health insurance deducted from their paychecks will receive an application at home. □