

NORTHEAST

Today

Northeast Missouri State University

Vol. 12 No. 2

August 27, 1990

Lyceum Presents Bettina Gregory



ABC News Senior General Assignment Correspondent Bettina Gregory will open the University's 1990-91 Lyceum Series at 8 p.m., Sept. 6, in Baldwin Auditorium. Gregory will speak on "Challenges Facing Washington." Free tickets for students, faculty and staff will be available Aug. 31 and Sept. 4 through 6 in the Student Activities Board Office, SUB.

In 1972, Gregory started her broadcasting career as a newscaster and reporter for WVBR in Ithaca, N.Y.,

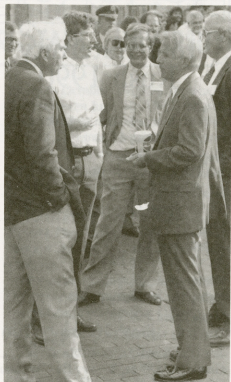
anchoring nightly newscasts and serving as the drama critic.

Gregory has been a correspondent on three *Burning Questions* broadcasts, *Working in America: Hazardous Duty*; *Lying, Cheating and Stealing in America*; and *The Business of Defense: Flaws in the Shield*.

She has covered a variety of events, from the royal wedding of Prince Charles and Lady Diana to the Iran hostage situation for *World News Tonight*, *Good Morning America* news and *Nightline*.

While serving as ABC News' federal regulatory agencies correspondent in 1978-79, Gregory reported on the Three Mile Island nuclear accident, the General Services Administration corruption scandal and the Love Canal investigation. She has also served as ABC's military affairs correspondent and general assignment correspondent.

(cont. pg. 2)



President Russell Warren talks with Walter Ryle, professor of history, at the Fall Welcome Reception for faculty and staff, Aug. 21. Warren officially assumed duties July 2.

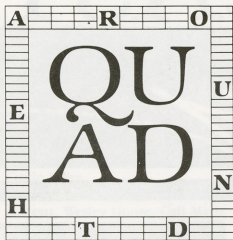


Judge James Reinhard and Nancy Schneider, president of Northeast's Board of Governors, present a plaque to Dr. Charles J. McClain in recognition of the rededication of McClain Hall, Aug. 10. See related story, page 5.

Greeks Make the Grade

Northeast's fifteen social fraternities exceeded the all-men's undergraduate grade point average for the spring 1990 term. The fraternity men achieved a 2.72 grade point average (GPA) in comparison to the all-men's average of 2.70. While the Greek men's average has vice before matched the all-men's average, this is the first time the fraternity group has surpassed it.

The five social Panhellenic sororities also achieved academic excellence by matching the all-women's GPA of 2.90. With each sorority exceeding 80 members, the Greek women have continued to meet or exceed the all-women's average for the past seven semesters.



Interfraternity Rush 1990

August 28

7:30-10 p.m.—Fraternity Rush Assembly, SUB Activities Room.

August 29 and 30

Individual fraternity parties

September 1

All-Star Greek Olympics, all rushees invited

September 2

Picnic, Red Barn Park

September 3-6

Individual fraternity parties

September 7

Fraternity sign-up (acceptance of bids)

Rush cards will be available at the Greek Life Office, Brewer Hall, without a fee through Sept. 4. Cards will be available for \$5, September 5 and 6. For more information, call the Greek Life Office at 785-7205.

Parents Day Scheduled for September 29

Parents Day 1990 will be held Sept. 29. Scheduled activities include a picnic lunch, Bulldog football versus Missouri Southern State College and Juggler/comedian Mark Nizer.

A complete schedule of events will be included in upcoming issues of *Northeast Today*.

The Sept. 3 issue of *Northeast Today* will be a September calendar issue. Deadline for entries is 5 p.m., Aug. 29. Entries should be submitted on *Northeast Today* forms available in the Public Relations Office, McClain Hall 202.

Northeast Missouri State University's 1990-91

Lyceum Series

All performances are held in Baldwin Auditorium at 8 p.m., with the exception of the Saint Louis Symphony program, which will be held at 8:30 p.m. Free tickets are available to students, faculty and staff prior to each performance.

September 6

Bettina Gregory

September 20

River City Ramblers

October 11

Elixir of Love
Lyric Opera of Kansas City

October 16

Quartet Seraphin

October 29

Austin on Tap

December 12

Saint Louis
Symphony Orchestra

January 16

"Master Harold"...
and the boys
Asolo Theatre Company

January 31

Kansas City
Symphony Orchestra

February 6

Rosewood Chamber Consort

February 20

William Raspberry

March 26

State Ballet
of Missouri

April 2

The Dining Room
Arkansas Repertory
Theatre



Financial assistance for the Northeast Missouri State University Lyceum Series has been provided by the Missouri Arts Council, a state agency, and the Mid-America Arts Alliance.



Panhellenic Rush Dates

Aug. 27-31	10 a.m.-7 p.m.	Rush Registration	Greek Life Office, Brewer Hall
Aug. 29	6-7:30 p.m.	Question/Answer Forum	SUB Alumni Room
	7:30-10 p.m.	Slide Pictures	Brewer Hall Basement
Aug. 31	4-8 p.m.	Slide Pictures	Brewer Hall Basement
Sept. 5	6-8 p.m.	Panhellenic Welcome	SUB Georgian Room
Sept. 6	7-9 p.m.	Informal Parties	SUB
Sept. 7	6:30-9:30 p.m.	Informal Parties	SUB
Sept. 8	3:30-7:30 p.m.	Formal Parties	
Sept. 9	2:5-30 p.m.	Preference Parties	SUB
Sept. 10	6-7:30 p.m.	Bid Day Celebration	Red Barn Park

Gregory cont.

Gregory is the recipient of numerous journalism awards. For her series of investigative reports dealing with children's welfare in New York, Gregory was awarded first place for national news by Odyssey Institute. In 1976, she won the Front Page Award from the Newswomen's Club of New York.

In 1983, she was named one of the nation's top ten investigative reporters by *TV Guide*. She received the Women in Communications 1979 Clarion Award

and the Women at Work Broadcast Award for excellence in reporting by the National Commission on Working Women.

Gregory was educated at Smith College in Northampton, Mass., at the Webber-Douglas Academy of Dramatic Art in London, England, and at Pierce College in Athens, Greece, where she graduated with a bachelor's in psychology and English.

A License to Show-Me: Northeast Pride

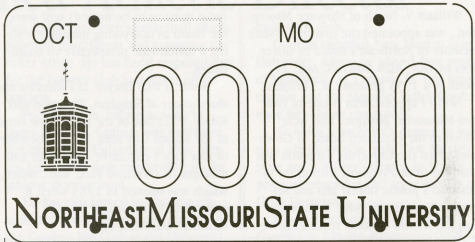
The State of Missouri has authorized the usage of special Collegiate License Plates for community and four-year public or private institutions of higher education. The Collegiate License program is designed to promote school spirit while raising funds for each college or university.

Northeast has joined the program and will offer personalized Bulldog plates to members of the NMSU Alumni Association. The plates will feature the school mascot, school name and a five-digit personalized display area.

Under the program guidelines, participating institutions are asked to collect a minimum of \$25 before an individual is given authorization to purchase or renew a Collegiate License Plate. Funds collected by each school are then to be used for scholarships or related academic functions.

To order your NMSU Collegiate License Plate follow these simple steps:

1. Become a member of the NMSU Alumni Association. (You do not have to graduate to become a member.)
2. Send a check or money order for \$25 to the Alumni/Development Office, McClain Hall 101, made payable to NMSU License Plate Program.
3. We will then send you an Emblem Use Authorization Statement.



4. You must take the Emblem Use Authorization Statement to your local License Bureau and make application for your plate, i.e.: complete registration forms, pay state fees, etc. (Personalized plates have an additional \$15 fee.) Collegiate License Plates may be issued to any particular vehicle you own other than commercial vehicles licensed for more than 12,000 pounds. (Other restrictions may apply.)
5. Upon approval of the application, the Department of Revenue will contact you with instructions as to the date and location at which the Collegiate Plates may be obtained.

Collegiate License Plates are renewa-

ble each October. Original applications filed between June 30, 1990 and June 30, 1991, will result in the issuance of plates which expire in October of 1991. To renew your plates you must send a minimum of \$25 to NMSU to receive an Emblem Use Authorization Statement.

Funds raised from the Collegiate License Plate program will be used to support the NMSU Alumni Scholarship program.

For more information on the NMSU Collegiate License Plate Program contact the Alumni/Development Office, McClain Hall 101, or call (816)785-4125.

1990 Chinese Youth Goodwill Mission

The 1990 Chinese Youth Goodwill Mission From Taiwan, Republic of China, will perform at 7:30 p.m., Aug. 29, in Baldwin Auditorium. Free tickets for students, faculty and staff are available in the Student Activities Office, SUB, and the International Student Office, Kirk Memorial.

The troupe will present a month-long tour throughout the United States. The Youth Goodwill Mission consists of 18 students from various colleges in Tai-

wan. Their goal is to introduce the traditional Chinese folk songs and dancing. Northeast is one of more than 15 campuses the group will visit.

The performance is co-sponsored by the Chinese Student Association, the International Student Office and the Residential Colleges.

A reception will be held immediately following the performance in Ryle Hall Main Lounge.



NORTHEAST MISSOURI STATE UNIVERSITY '90-'91

Lyceum Series

CHALLENGES FACING
WASHINGTON

SEPTEMBER 6

BALDWIN AUDITORIUM

8 P.M.

ABC News senior general assignment correspondent Bettina Gregory opens the 1990-91 Lyceum Series. Gregory has covered a variety of major national news stories and is recognized as one of the nation's top investigative reporters.

Free tickets for students, faculty and staff will be available from 12-4 p.m. in the Student Activities Board Office, SUB.

**bettina
GREGORY**

Out-of-state Member Named to Board

William V. North of Shawnee Mission, Kan., was appointed the first out-of-state member of Northeast's Board of Governors by Gov. John Ashcroft, Aug. 21. North is a 1953 graduate of Northeast.

North's appointment is one of two non-Missourian positions that were added to the expanded Board of Governors when the University's mission was changed from a regional institution to Missouri's public liberal arts and sciences university in 1986. Both North and the second national representative

(who remains to be named) will serve the Board as non-voting members offering a nationwide perspective to Board issues.

North, a trial lawyer, is a director and shareholder of Shughart, Thomson and Kilroy, P.C., one of the largest law firms in the Kansas City area. He is a member of that firm's executive committee and manages its Overland Park, Kan., office, which was opened in 1983 when it merged with the firm of North, Lancaster and Dickson.

At Northeast, North was a member of Phi Sigma Epsilon, Blue Key, Alpha Phi Omega and Pi Omega Pi, and he was named to Who's Who Among Students in American Universities and Colleges. He earned his Juris Doctorate from the University of Iowa College of Law.

North is married to former Joyce Kissner ('53). They have three children, William V. Adam and Amy.

North's term ends Jan. 1, 1992.

Shrout Named to Board of Governors

Thomas R. Shrout Jr., executive director of the St. Louis Citizens for Modern Transit, was named to the Northeast Missouri State University Board of Governors by Gov. John Ashcroft. Shrout replaces former St. Louis Mayor James Conway whose term on the Board expired Jan. 1.

As executive director of Citizens for Modern Transit for the past three years, Shrout has directed efforts to gain approval for and begin construction of the light-rail public transportation system in St. Louis.

Previous to his position with CMT, Shrout was director of academic marketing for the Response Marketing Group of

St. Louis. From 1971-86, Shrout was director of external affairs at Northeast.

Shrout earned a bachelor's of journalism from the University of Missouri-Columbia in 1970. While in college, he served as a teaching assistant, a newsmen on KOMU-TV and a radio news editor on KFRU radio in Columbia. After graduating, Shrout spent a year at the Associated Press broadcast headquarters in New York City as a wire service writer/editor.

Shrout and his wife Debra Kitts Shrout ('74), coordinator of the journalism magnet school in the Kirkwood, Mo., school district, have two children, Thomas III and Rachel.

Cable Named to CoSIDA Board

William Cable, sports information director, has been elected to the 15-member board of directors of the College Sports Information Directors of America (CoSIDA). The Board consists of six executive officers, two at-large members, four college representatives and three past presidents. Cable will serve a three-year term as the College Division Representative for the Central Region. CoSIDA has approximately 1,600 members in its organization.

Cable was elected as a college division representative after being recommended by the nominations committee at the 1990 CoSIDA National Workshop held this spring in Houston.

Shoaff-Ballanger Named To Education Task Force

Susan Shoaff-Ballanger, associate dean of graduate studies and associate professor of art, has been named to the Coordinating Board for Higher Education's Task Force on Recruitment of Missouri's Future Teachers.

Charles J. McClain, Missouri's Commissioner of Higher Education announced the appointment of the Task Force. The outcome of the study will be used to generate teacher education professionals who will affect the academic performance of students throughout future decades.

Also named to the Task Force is Kent Farnsworth ('79), president of Crowder College.



Judge James Reinbard of Hannibal, Mo., swears in new Northeast Missouri State University Board of Governors member Thomas Shrout. Reinbard was on the University's Board of Regents from 1965-73, serving six years as president.

Graham Named Athletic Director



Alan Graham, assistant athletic director at James Madison University in Harrisonburg, Va., has been named athletic director at Northeast, effective Sept. 17.

Graham has been assistant athletic director for external activities at James Madison since 1988. He is responsible for directing the Duke Booster Club fund drive, marketing the football, men's and women's basketball programs, marketing the Colonial Athletic Associa-

tion conference men's basketball championship tournament and managing the ticket office. He has fiscal responsibility for the booster club and ticket office budgets.

For two years, before moving to James Madison, Graham was executive director of the University of New Mexico Lobo Club with responsibilities for athletic development.

He has also served as assistant athletic director and executive director of the Cowboy Joe Club at the University of Wyoming, assistant athletic director for development at the U.S. Air Force Academy, president of InSport Resources Inc. (fund-raising services for small and midsize college athletic programs) and director of customer services and sales administrator for the New Orleans Jazz

basketball club.

Graham attended New Mexico State University, where he played four years of basketball. As a senior, he was team captain and the Missouri Valley Conference free-throw champion.

He holds a bachelor's degree in business administration from New Mexico State and a master's degree in health, physical education and recreation from Ohio University.

Since the retirement of Kenneth Gardner as athletic director in 1988, two interim directors have served the University. Sam Lessig, women's golf coach, filled that capacity for one year, and John Cochrane, women's cross-country and track coach, has been the interim athletic director since last August.

McClain Hall Rededication

Coinciding with Northeast's summer commencement exercises, Aug. 10, was the rededication of the Administration/Humanities Building as McClain Hall, in honor of former University President Charles J. McClain.

McClain, now commissioner of higher education for the state of Missouri, delivered the commencement address. More than 250 graduates, their families and friends and members of Northeast's Board of Governors and faculty attended the ceremonies in Stokes Stadium.

For more than 40 years, McClain has been involved in education as a teacher and administrator. As chief administrative officer of the Coordinating Board for Higher Education, McClain assists the nine-member board in establishing and maintaining program and funding policies for the state's institutions of higher education and in supervising all institutions of higher education in Missouri.

Prior to his appointment as commissioner in 1989, McClain served as president of Northeast Missouri State University. During his 19-year tenure, he led the former teachers college from regional university to its current status as Missouri's statewide public liberal

arts and sciences university.

Before his presidency at Northeast, McClain was named the first president of Jefferson College in Hillsboro, Mo., in 1963. The college received its full accreditation within four years. Previously, he served as an assistant dean of the University of Missouri's College of Education and as an assistant professor of education for two years.

He also served as superintendent of the R-VII School District in Festus, Mo., director of field relations at Southwest Missouri State University and principal of Jefferson County R-II Elementary School in Missouri.

In 1989, he was recognized by the University of Missouri-Columbia with its Alumni Award. In the same year, the American Association for Higher Education's Assessment Forum honored McClain for his service to students and efforts to improve educational quality through significant, long-term work in assessment.

He received the Public Administrator of the Year Award in 1986 from the Missouri Institute of Public Administration. In 1977, he received the Outstanding Alumnus Award from Southwest

Missouri State University and the Citation of Merit for Distinguished Service Award from the College of Education at the University of Missouri-Columbia.

McClain holds a bachelor's degree from Southwest Missouri State University. He was awarded a Gregory Fellowship for graduate study and earned master's and doctoral degrees from the University of Missouri-Columbia. He holds an honorary Doctor of Literature degree from the Busan National University, Korea, in addition to several other honorary degrees.



Welcome New Faculty

Business and Accountancy

Catherine Poyner
Temporary Instructor of Business
Administration
B.S. David Lipscomb College
M.S. Louisiana State University

Family Sciences

Mary Ellen Mobs
Temporary Associate Professor of
Family Sciences
B.S. Pratt Institute
M.S. Pennsylvania State University
Ph.D. University of Arizona

Fine Arts

John Bobac
Temporary Assistant Professor of Art
B.A. Northeast Missouri State
University
M.F.A. University of
Wisconsin-Madison

Richard J. DiMuzio
Temporary Instructor of Music
B.S. Indiana University of
Pennsylvania
M.M. Eastman School of Music

James Andrew Jereb
Assistant Professor of Art
B.F.A., M.F.A. University of Wyoming

Kenneth P. Seino
Temporary Assistant Professor of
Music
B.M., M.M. Michigan State University

Health and Exercise Science

John Eric Holm
Head Football Coach/ Temporary
Instructor of Exercise Science
B.S., M.A. Northeast Missouri State
University

Gregg Douglas Nesbitt
Assistant Football Coach/Defensive
Coordinator and Temporary Instruc-
tor of Health and Exercise Science
B.S.E., M.A. Northeast Missouri State
University

Language and Literature

David James Christensen
Assistant Professor of Language and
Literature
B.A. Texas Tech University
M.A. University of Wisconsin-Madison

Sally J. Cook
Assistant Professor of English
(Linguistics)
B.A. Miami University in Oxford
M.A. Indiana University

Sara L. Cornette
Temporary Instructor of Speech
Communication
B.A., M.A. University of Northern
Iowa-Cedar Falls

Maria Cecilia Ennabe
Assistant Professor of Spanish
B.A. Notre Dame College
M.A. St. Louis University

Timothy Farley
Assistant Professor of French
B.S. Southwest Missouri State
University
M.A. Indiana University

Jill A. Graffitus
Assistant Professor of Spanish
B.S., M.A. Bowling Green State
University

April V. Hershey
Temporary Assistant Professor of
Speech Communications
B.A. Connecticut College
M.B.A. Youngstown State University

Cornelia A. A. Baker Jones
B.A. Northeast Missouri State
University

Joanna Barszewska Marsball
Temporary Instructor in English (Cal
Huenemann Instructorship)
B.A. Regis College
M.A. Purdue University
M.A. Northeast Missouri State
University

Silvia E. Pites
Assistant Professor of Spanish
B.A. Brigham Young University
M.A. University of Kansas

Barry Cole Poyner
Assistant Professor of Communication
B.A. David Lipscomb College
M.A. Louisiana State University

Rodney Fred Taylor
Assistant Professor of German
B.A., M.A., Ph.D. University of Utah

Mathematics and Computer Science

Matthew Blotevogel
Campus Computer Lab Coordinator
B.S. Northeast Missouri State
University

Suren Fernando
Assistant Professor of Mathematics
B.S. University of Sri Lanka
M.S., Ph.D. University of
Wisconsin-Madison

Science

Brent Buckner
Assistant Professor of Biology
B.S. Lock Haven State College
M.S., Ph.D. University of Vermont

David Edward Chyba
Assistant Professor of Physics
B.A. LaSalle College
M.A. University of Wisconsin-Madison
Ph.D. Bryn Mawr College

Cynthia Cooper
Assistant Professor of Biology
B.S. University of Houston-University
Park
Ph.D. Texas A & M University

Diane Janick-Buckner
Assistant Professor of Biology
B.A. Gettysburg College
Ph.D. University of Vermont

Bruce J. Mecbtly
Assistant Professor of Physics
B.A. Gettysburg College
M.S., Ph.D. The Pennsylvania State
University

Anne E. Moody
Assistant Professor of Chemistry
B.S. University of North Carolina-
Chapel Hill
Ph.D. Colorado State University

Notes

Student picture IDs are available free-of-charge to all students. Obtaining the ID is optional. Student Senate will be offering the service in the Student Union Building rooms 2 and 3 from 12:30 to 5 p.m., Sept. 7; 11 a.m. to 7 p.m., Sept. 8; 11 a.m. to 6 p.m., Sept. 9; 12:30 to 5 p.m., Sept. 14; 11 a.m. to 7 p.m., Sept. 15; and 11 a.m. to 6 p.m., Sept. 16.

The Activities Fair will be held from noon to 4 p.m., Sept. 5, on the Mall. This year's theme is "Hey Look Us Over." Organizations that are interested in late registration should call the Student Activities Office at 785-4222. In case of rain, the Fair will be held in the SUB Activities Room.

Echo yearbook picture appointments can be made Sept. 10-14 from 10 a.m.-4 p.m. on the second floor of the Student Union Building.

Foreign Service Officer Program information and applications are available in the Career Placement Center, McKinney Center.

New Faculty cont.

Peter Rolnick

Assistant Professor of Physics
B.S. Antioch College
M.S., Ph.D. University of Oregon

Steven Salt

Assistant Professor of Biology
B.S., M.S. Utah State University
Ph.D. University of Minnesota

Mobammad Samiullab

Assistant Professor of Physics
B.S. The University of Burdwan
M.Sc. Indian Institute of Technology
Ph.D. Boston University

Social Science

Robert C. del Mas

Assistant Professor of Psychology
B.A., Ph.D. University of Minnesota

David H. Gillette

Assistant Professor of Economics
B.S. Idaho State University
Ph.D. Washington State University

There will be a Model United Nations orientation meeting at

6:30 p.m., Sept. 4, in McClain Hall 212. For more information, contact Jim Carter at 665-4327. All majors welcome.

Applications are available for six open positions on the Student Activities Board (SAB) in the Student Activities Office. An informational meeting for students interested in the open positions will be held on Aug. 28 and 29, at 6:30 p.m., in the SUB Conference Room. Applications are due Sept. 7 in the SAB or Student Activities offices.

Student Senate has petitions available for five freshmen representatives, two councilmen and two councilwomen. An informational meeting will be held for interested students on Aug. 29 and 30 and Sept. 6 at 7 p.m., SUB 4. Student Senate petitions are due at 5 p.m., Sept. 14, at the Student Senate Information Center. Elections will be held Sept. 25-26, from 9 a.m. to 4 p.m., in the SUB Alumni Room. For more information, contact the Student Senate Information Center in the Student

Union Building.

There will be an informational meeting of IF NOT NOW..., a new student newspaper to promote black awareness, Sept. 5, at 7 p.m., SUB 5.

The Student Activities Board is sponsoring Mud Volleyball/Band Fest 1990 on Sept. 15 from 10 a.m. to 6 p.m., south of Stokes Stadium. Sign-up for mud volleyball will begin Sept. 3. Teams must have eight players. Registration fees are \$8 with four SAB stickers per team or \$12 with three or less SAB stickers per team. For more information, contact the SAB office.

SAB is selling tickets for Worlds of Fun and Oceans of Fun, Monday through Friday, 9:30 a.m. to 3:30 p.m., in the SAB office. Prices are \$13 for Worlds of Fun tickets and \$9 for Oceans of Fun tickets.

A student employment board located in Career Placement Center, McKinney Center, provides a current, comprehensive list of job openings on campus and within the Kirksville area.

Randy L. Hagerty

Assistant Professor Of Political Science
B.A., M.A. Texas Tech University
Ph.D. University of Illinois-Urbana/Champaign

Lily Hua

Assistant Professor of Asian History
B.A. National Taiwan University of Taipei
M.A., Ph.D. University of Illinois

John Toaru Isbiyama

Assistant Professor of Political Science
B.A. Bowling Green University
M.A. University of Michigan
Ph.D. Michigan State University

Terry L. Olson

Assistant Professor of Economics
B.S., B.A. University of Minnesota
M.S., Ph.D. University of Illinois

David Kent Robinson

Assistant Professor of European History
B.A. Harvard College
M.A., Ph.D. University of California



President Russell Warren congratulates JoAnne Moritz on her 30-year anniversary with the University; Dale Schenewerk, assistant to the president, looks on. Moritz, supplies distributor for Printing Services, began working at the University in 1960.

This Week

27 MONDAY

- 10 a.m.-2 p.m.—**Free soda**, sponsored by United Campus Ministry, Circle Drive
- 9 p.m.—**Bible study of Old Testament**, Wesley House. Call Marla Guy at 665-2331 for details.

28 TUESDAY

- 6:30 p.m.—**Directions program** for freshman minority students, SUB Alumni Room. There will be a reception for all minority students immediately following. For more information, contact Dwyane Smith at 785-4140.
- Student Activities Board (SAB)** informational meeting, SUB Conference Room; also Aug. 29. Students interested in Board positions should attend.

29 WEDNESDAY

- 5:30 p.m.—**Get acquainted picnic**, Wesley house, free admission. Everyone welcome.

—**Barbeque and activities**, Campus Christian Fellowship Campus House. Admission is free.

- 6 p.m.—**University Players** theatre organization meeting, Baldwin Hall Little Theatre, Baldwin Hall 176. All students interested in theatre are welcome.
- 6:30 p.m.—**"The Christ Connection,"** a time of worship, discussion and fellowship, Wesley House. Call Marla Guy at 665-2331 for details.
- 7 p.m.—**Student Senate** informational meeting, SUB 4; also Aug. 30.
- 7:30 p.m.—**1990 Chinese Youth Goodwill Mission from Taiwan**, Republic of China, Baldwin Auditorium. Admission is free. See related story, page 2.
- 8:30 p.m.—**Organization of Students Concerned About Resources (O.S.C.A.R.)** open meeting, SUB 5

Newman Center Parking Lot. Admission is \$1 for new students and \$2 for returning students.

- 6 p.m.—**Welcome back barbeque**, Baptist Student Center. Admission is free.
- 6:30 p.m.—**Koinonia Corps**, an outreach music and drama ministry, non-audition, Wesley House. Call Marla Guy at 665-2331 for details.
- 7 p.m.—**NMSU Historical Society** meeting, SUB 5. All students interested in history are invited to attend.

1 SATURDAY

- **Men's Cross Country**; Purple and White Alumni Meet
- Noon and 2 p.m.—**Men's soccer**, Gardner Cup Classic, soccer field; also Sept. 2.
- 1:30 p.m.—**Unique Ensemble Gospel Choir** rehearsal, Baldwin Hall 251. Everyone is welcome regardless of musical ability.

30 THURSDAY

- 5 p.m.—**Welcome barbeque**,

Fall Hours

Natorium

open swimming
Monday-Friday 6:30-9:30 p.m.
(not Tuesday)
Saturday 11 a.m.-2 p.m. (tentative)
faculty swim
Monday-Friday 11:30-12:30 (tentative)

Student Union Building

Monday-Friday 7 a.m.-10 p.m.
Saturday and Sunday 9 a.m.-10 p.m.

Games Room, SUB

Monday-Friday 9:30 a.m.-9:30 p.m.
Saturday 10:30 a.m.-9 p.m.
Sunday 2-9 p.m.

Snack Bar, SUB

Monday-Friday 7 a.m.-7 p.m.
Saturday 9 a.m.-7 p.m.
Sunday 10 a.m.-5 p.m.

Campus Bookstore, SUB

Monday-Friday 8 a.m.-5 p.m.

Pickler Memorial Library

Monday-Thursday 8 a.m.-midnight
Friday 8 a.m.-10 p.m.
Saturday 10 a.m.-10 p.m.
Sunday noon-midnight

Writing Center, A/H 303

walk-in hours available

Academic Computing Lab, Violette Hall 248

Monday-Thursday 8 a.m.-midnight
Friday 8 a.m.-5 p.m.
Saturday 10-5
Sunday noon-midnight

Student Health Clinic

Monday-Friday
8 a.m.-4 p.m.