



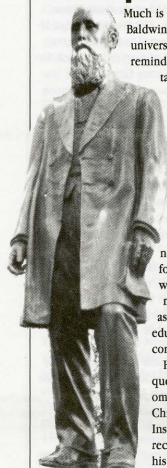
# NORTHEAST TODAY

▶ VOL. 18 NO. 13 ◀

Northeast Missouri State University

November 16, 1992

## Northeast's 125th: Joseph Baldwin Memorial



Much is known about Joseph Baldwin, the founder of this university, and a constant reminder of this man stands tall in front of Kirk Memorial. But who knows the story behind the statue?

In 1927, one hundred years after Baldwin's birth, a group of students and faculty decided that a memorial for Baldwin was needed, so they formed a Joseph Baldwin Memorial Committee. Ethel Hook, associate professor of education, chaired that committee.

Hook promptly requested a sculptor recommendation from the Chicago Art Institute. Instructor Lorado Taft recommended one of his former students,

Leonard Crunelle, to design the statue. Crunelle first won recognition through his models of babies. "The Squirrel Boy" is perhaps the most famous of his later studies. Crunelle is also well-known for his statue of Abraham Lincoln which was dedicated in Freeport, Ill., on the 72nd anniversary of the Lincoln-Douglas debate.

Crunelle was contracted for \$6,000 to mold the Baldwin statue in bronze to be mounted upon a five-foot granite pedestal. The class of 1927 contributed \$400, the faculty gave \$600, and the summer school students collected \$500 to be contributed to the cause. With faith in the alumni, faculty, students and friends of the school, the Committee borrowed from the Student Hospital Fund contributed several years prior.

The unveiling of the statue took place at the Annual Convention of the Northeast Missouri Teachers Association in Oct. of 1927 at the auditorium building with 2,500 people attending.

The popularity of Baldwin's statue grew rapidly, and in 1940, the statue was portrayed on one of a series of 50 large full-color tourist travel stamps issued by the Missouri State Chamber of Commerce.

## University-Wide Faculty/Staff Meeting

An Update  
On The  
*Higher Order  
Of Excellence*

Thursday, November 19.  
4:30 p.m.  
SUB Georgian Room

LYCEUM SERIES PRESENTS



November 19 • 7:30 p.m.  
Baldwin Auditorium

Financial assistance has been provided by the Missouri Arts Council, a state agency.

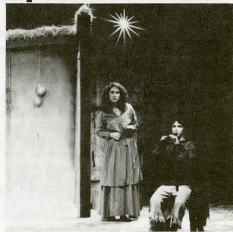
## Lyceum Series Presents A Christmas Opera

The NMSU Lyceum Series brings a Christmas opera to the stage with the performance of *Amahl and the Night Visitors* on Nov. 23 at 7:30 p.m. in Baldwin Hall Auditorium.

Gian-Carlo Menotti's Christmas opera tells the story of a crippled boy and his mother who are visited by three kings on their starguided way to Bethlehem. The opera is sung in English and is for children of all ages.

Included in the program will be two or three sing-along selections for stage ensemble and audience, in celebration of the Christmas spirit.

Free tickets are available for students, faculty and staff in the Student Activities Office, SUB.



## Board of Governors to Consider Three Proposals

On Oct. 31, the university administration made recommendations to the Fiscal and Legal Affairs Committee of the Board of Governors on three projects: residence halls, parking, and computing and technology.

Vonnie Nichols, dean of students, reported the residence halls proposal involves "A no-frills repair, maintenance, and replacement project for the next eight years." The category of top priority needs include replacing furniture and repairing the bathrooms and cafeterias. Nichols explained that because many of the dorms were constructed in the 1960s, repair and maintenance is now becoming necessary.

To pay for this project, the university would draw from auxiliary reserves and borrowing

internally. Residential living fees would be increased over the next eight years to help finance the work as well as to create a fund for future hall improvements.

The second proposal involves improving existing lots and eliminating those with gravel, as well as adding 200 spots to the campus' total parking capacity. These projects would not only help with the current parking problems but also improve campus aesthetics.

A proposed increase in the current parking registration fee from \$7 to \$25 would help finance this project. This would, in effect, change the charge from a registration to a usage fee comparable to that paid at other institutions.

The final proposal would serve the

long term computing and technology needs of the campus. It would involve improving the financial software and hardware, upgrading the academic computers and student computer labs, and installing a fiber optic backbone network to increase connections between the halls on campus.

A combination of a proposed \$50 increase in student fees each fiscal year and reserve money from the campus' long distance service would pay for this project.

All proposals would benefit the students, faculty and staff alike. The Fiscal and Legal Affairs Committee has voted to propose these projects to the Board of Governors at their December meeting in Kansas City.

## VIS Awards Campus Organizations

Violence Intervention Services, a local counseling center for victims of rape and domestic violence, presented awards of appreciation to two Northeast organizations at its fourth anniversary celebration on Nov. 5.

Ryle Hall South, Phi Lambda Chi, the Adair County Sheriff's Department, and the Kirksville Police Department each received certificates of appreciation for their service and support.

"I don't think there's a more worthy charity in this area," said Aaron Staebell, president of Phi Lambda Chi, as he accepted the award on behalf of the fraternity.

Kim LeBaron, executive director of VIS, said the organization counseled more than 500 men, women, and children in the last year and

handled more than 700 crises calls. Attendance of their support groups has increased and their legal advocacy program has improved. VIS has also developed a rape advocacy program in cooperation with the local law enforcement and hospitals.

"We have victories every day," LeBaron told supporters and staff at the celebration.

Phi Lambda Chi raises funds for VIS through their annual camp-on-the-mall, when members of the fraternity and a chosen sorority "tent out" on the mall, 24 hours a day, for a week. Donations from businesses and passers-by go to VIS. Each member of Phi Lambda Chi is also responsible for collecting a certain amount of donations during the year. LeBaron said Phi Lambda Chi has donated over \$4000

in the last few years.

"We thought it would be good for a fraternity to show its support for an organization like VIS," said Staebell. "We [fraternities] are not the den of rapists everyone makes us out to be."

Ryle South has a tradition of supporting VIS and holds a Christmas market every year in the first week of Dec. Local craft artists and organizations rent tables, and the proceeds go to VIS. LeBaron said Ryle contributes \$600 - \$700 each year.

Julie Krull, sophomore and co-chair of the Christmas market said they chose VIS because "It's a good cause - the proceeds go to battered women, and because it's a local organization."

## Success of Adopt-a-Classroom

In the spring of 1992, President Russell Warren proposed a means by which the students could help the University cut maintenance costs: the Adopt-A-Classroom program.

Following the announcement of this proposal, six groups volunteered to become a part of a test program which took place late in the spring semester. Due to its success, the Adopt-A-Classroom program has since acquired a total of 13 student organizations.

The program requires the participating organizations to clean their designated classrooms once a week. To date, selected rooms in Viollette, Pershing, Baldwin and Science Halls are being cleaned in this way.

In appreciation of this service, the participating organizations will have plaques placed on the doors of the rooms that they clean rec-

ognizing their efforts in the program. Gene Schneider, director of the physical plant, says that these plaques are currently in the process of being made.

Schneider also adds that this program is meant to supplement, not replace, the work done by the physical plant, as well as, to get students involved in keeping the campus attractive. He says the program has not experienced any major problems, only difficulties in coordinating available times for the organizations to clean.

According to Schneider, five or six rooms still need to be "adopted." Interested organizations can call Danny Roof, custodial supervisor and director of the Adopt-A-Classroom program, at 785-4200, or visit the Physical Plant Office in Kirk Building 106.

## Library Hours Thanksgiving Break 1992

24 TUESDAY  
8 a.m.-5 p.m.

25-28 WED.-SAT.  
Closed

29 SUNDAY  
Non-Midnight

30 MONDAY  
Regular Hours

# Notes

**The 1993 NMSU United Way Drive** is approaching its goal of \$33,000 to be used for the twelve local agencies the Adair County United Way supports. The overall amount collected so far is approximately 90% of the total goal. All contributions and help have been greatly appreciated. If you have not contributed as yet please consider doing so to help bring the NMSU community to its goal.

**Co-ed Volleyball Tournament for United Cerebral Palsy** will be held Nov. 21 & 22 at the Kirksville YMCA. Cost is \$25 per team with each team guaranteed two games. There will be a \$50 first prize along with door prizes. To register contact Jeanne at 627-0824 or Michelle at 627-6319. Sponsored by Delta Sigma Pi.

**Lost items such as books, clothing, jewelry, etc.** are forwarded to the Department of Public Safety each month by Safety and Security. Contact the Safety and Security office at 785-4176 to inquire.

**The Help Line** number is 627-4357. If you need someone to listen, someone to help or if you just want some information call the Help Line. The number may also be used to receive campus crime update information.

**The Third Annual Missouri Conference on Blacks in Higher Education** will be held April 15-17, 1993. Students, faculty and staff are invited to submit proposals for sessions at the conference. Presentations should be 30-45 minutes long allowing time for an additional 15-20 minute discussion period. Presentations may evolve from the conference

theme "Preparing African American Students for the 21st Century: Access, Accountability, and Achievement" as well as other aspects. Send submissions to Alfred Robinson, Missouri Conference on Blacks in Higher Education, 303 Young Hall, Lincoln University, Jefferson City, Missouri, 65102. The deadline is Dec. 18, 1992.

**The International Student Office** has applications for students wishing to purchase the International Student Identification Card. The card allows students, who will be traveling abroad, many discounts on travel expenses. The cost is \$15 and a picture is needed for the card.

**A special slide/lecture presentation** is scheduled for Nov. 17 at 7:30 p.m. in Violette Hall 121. The presentation titled "Jerusalem: An Archeological History from Ancient Times to the Present" and also "Bethsaida: In the Footsteps of Jesus: New Discoveries" will feature Dr. Rami Arav, professor in the Zinman Institute for Archeology at the University of Haifa, Israel. This presentation is part of a consortium sponsored series held at Michigan State University, the University of Chicago, the University of Nebraska and the University of California, Berkeley. The presentation is free and open to the public.

**The Catholic Newman Center** is sponsoring a food and clothing drive. Non-perishable food and clean clothing that is in good condition will be accepted at the Newman Center, 709 S. Davis, through Dec. 21.

**Windfall**, NMSU student literary magazine is

accepting poetry, fiction, art, drama, and photography for the next issue. Send submissions to Windfall, CAOC, SUB. The deadline is Nov. 21.

**Student Lab Show**; collection of absurdist comedies titled *Aphasia* and *Mr. Oxford* and *Mr. Webster Take A Vacation* will be performed in Baldwin Little Theatre Dec. 2, 3 and 4 at 8 p.m.

**Applications** for the original program early retirement plan, which consists of a single lump sum payment to be made in FY 1992-93, must be filed before Nov. 30, 1992.

**Opportunity for service**: Laubach Literacy classes, to prepare tutors for non-reading adults will be held Nov. 16, 19, and 20 from 6-10 p.m. at Kirksville Area Vocational Center. Attendance at all three sessions is required for Laubach certification. Those persons who become certified are matched one-on-one with adult non-readers as the need arises. Laubach certification is recognized in most states as a requirement for literacy tutors and is transferable from one geographic location to another. To learn more about the Laubach classes, contact the Center for Service-Learning at 785-4265 or Nina Main, Adult Literacy Coordinator at 665-2865. To register for the class, call 665-2865.

**Nomination forms for the Educator of the Year Award** are available at the Student Senate Information Center on the main floor of the SUB. Nominations are due back to the Student Senate Information Center no later than Nov. 27. For more information, contact JoAnn Kellar at 785-5874.

## Media Sponsors Heartland Food Drive

On Nov. 2 the media of Kirksville kicked off the 4th Annual Heartland Food Drive. The drive is a community wide effort.

For the Northeast campus, all colleges and organizations are invited to take part in the drive as part of a friendly competition. The group that collects the most food for the drive by the culmination date of Dec. 2 will receive their organization or group name engraved on a special travelling plaque in which they can display until next year's drive. The winner will also receive 25 free pizzas courtesy of Domino's Pizza in addition to

receiving full media recognition for the group's achievements.

The competition consists of each group collecting food and storing it in a place of their choice until the end of the drive. Then on Dec. 2 the groups are to bring the food to a collective spot which will be in the SUB. The food will then be collected and tallied. A winner will be announced on Dec. 3.

If your group wants to get involved contact Jeff Insko in the Public Relations Office, McClain Hall 106 at 785-4019 or Troy Renner of KIRX Radio at 665-3781.

## Notables

Music students **Andrew Beard**, sophomore, **Curt Oelschlaeger**, junior, and **Scott Piper**, senior, received awards at the Missouri State Auditions sponsored by the National Association of Teachers of Singing on Oct. 31 at Avila College, Kansas City. Beard placed 1st in the Lower Collegiate Men's Division, Oelschlaeger received honorable mention in the Junior Division, and Piper placed 3rd in the Senior Division.

**Lewis Hershey**, assistant professor of business administration, appeared as a panelist on KTVO's Heartland Town Meeting on health care at Indian Hills Community College. Hershey represented the point of view of consumers in examining the costs of health care and the organization of the health care system.

# This Week

## 16 MONDAY

- ▶ 2 p.m.—**Communication Disorders/Justice Systems/Industrial Science senior tests**, SUB Activities Room
- ▶ 3:30-5 p.m.—**Mock interviews** for Marshall Scholarship finalists, SUB Alumni Room
- ▶ 7 p.m.—**Student Oboe Recital** featuring Price Kimberly Alexander, senior, Baldwin Auditorium
- ▶ 8 p.m.—**Faculty Piano Recital** featuring Melissa Rose, assistant professor of music, SUB Activities Room.  
—**Classics Club** founding meeting and *Monty Python's Life of Brian*, McClain Hall 302

## 17 TUESDAY

- ▶ 8:30 a.m.—**College Level Examination Program (CLEP)**, McClain Hall 103
- ▶ 7:30 p.m.—**Special slide/lecture presentation** about Jerusalem and Bethesda featuring Dr. Rami Arav, professor in the Zinman Institute for Archeology at the University of Haifa, Israel, Violette Hall 121. See Notes.
- ▶ 8 p.m.—**Music and Art in Germany**—Faculty Lecture/Recital, Baldwin Little Theatre

## 18 WEDNESDAY

- ▶ Noon-1 p.m.—**"Papa Don't Preach,"** the discussion topic of communicating with your parents now that you're in college as part of the "Lunch on the Lawn" discussion series at the University Counseling Center, 202 E. Patterson.
- ▶ 12:30-1:30 p.m.—**"Lectures that Make a Difference,"** discussion topic as part of the Lunch Series on Teaching Approaches, SUB Spanish Room. Lunch may be charged to the Faculty Development Committee in Mainstreet Market.
- ▶ 4-5 p.m.—**"Get a Better Understanding of Your Benefits and Investment Opportunities at NMSU,"** discussion featuring Russell Harrison, director of Human Resources at Northeast, SUB Alumni Room.
- ▶ 7 p.m.—**Bulldog Wrestling Purple & White Intrasquad Meet**, Pershing Arena
- ▶ 7-9 p.m.—**"The Africans: A Triple Heritage,"** Violette Hall 266. A discussion with African professors will immediately follow the film. Sponsored by Dobson Hall staff.

## 19 THURSDAY

- ▶ 2 p.m.—**Health and Foreign Language senior tests**, McClain Hall 103
- ▶ 3:15 p.m.—**AICPA senior test**, Violette Hall 140
- ▶ 7:30 p.m.—**Lyceum Series** presents The Kansas City Symphony, Baldwin Hall Auditorium. Free tickets for students, faculty and staff are available in the SAB office, SUB.

## 20 FRIDAY

- ▶ 6 p.m.—**"Thanksgiving Potluck, Board Games Extravaganza and 'JFK,'"** 202 E. Jefferson #408. Bring your favorite dishes, table service and favorite board game. Everyone will be attending the SAB movie, "JFK" following the potluck. All graduate students welcome.
- ▶ 7 & 9:30 p.m.—**"JFK,"** SAB movie, Baldwin Auditorium. Cost is \$2 or free with an SAB sticker.
- ▶ 9:30 p.m.—**International Student Club Dance**, Kirk Gym. No cost.

## 21 SATURDAY

- ▶ 8:30 a.m.—**Real Estate Licensing Examination**, McClain Hall 103  
—**Test of English as a Foreign Language**, McClain Hall 208 & 210
- ▶ 3 p.m.—**Senior Voice Recital** featuring Erin Jackson, soprano, and Gregory Milliron, tenor, SUB Activities Room
- ▶ 7 & 9:30 p.m.—**"Unlawful Entry,"** SAB movie, Baldwin Auditorium. Cost is \$2 or free with an SAB sticker.
- ▶ 7:30 p.m.—**Bulldog Basketball** vs. Finnish Team (Exhibition), Pershing Arena
- ▶ 8 p.m.—**Wind Symphony concert**, Baldwin Auditorium

## 22 SUNDAY

- ▶ 3 p.m.—**Faculty Recital** featuring Julianna Moore, assistant professor of music playing flute, and Nancy Hueber, assistant professor of music playing piano, SUB Activities Room
- ▶ 8 p.m.—**NMSU Jazz Ensemble concert**, Baldwin Auditorium

## 23 MONDAY

- ▶ 1:30 p.m.—**Sophomore Test: CAAP make-up**, SUB Activities

- ▶ 7:30 p.m.—**Lyceum Series** presents *Amahl and the Night Visitors*, Baldwin Auditorium

## 24 TUESDAY

- ▶ 5:30 p.m.—**Bulldog Wrestling** vs. William Penn College, Pershing Arena
- ▶ 7:30 p.m.—**Bulldog Basketball** vs. Lincoln University, Pershing Arena

## 25 WEDNESDAY

- ▶ 7:30 a.m.—**Thanksgiving Break** begins

## 28 SATURDAY

- ▶ 6 p.m.—**"Babette's Feast"** directed by Gabriel Axel. A Swedish film stressing the themes of loyalty and piety, Trinity Episcopal Church, 124 N. Mulanix.
- ▶ 7 p.m.—**Lady Bulldog Basketball** vs. St. Cloud State (Minn.), Pershing Arena

## 30 MONDAY

- ▶ 7:30 a.m.—**Classes Resume**

## CPC Update

### 17 TUESDAY

**Pella Corporation.** Interviews. Accounting, Management, Computer Science majors.

**Von Maur.** Interviews. Executive Training Program. Business majors interested in retail career. Dec. 92/May 93/recent graduates.

**Venture Stores, Inc.** Interviews. Asset Protection Management Program. Business, Communication, Liberal Arts majors. Dec. 92/recent graduates.

### 18 WEDNESDAY

**Venture Stores, Inc.** continued.

### 3 THURSDAY, DECEMBER

**Cargill, Incorporated.** Interviews. Quality Assurance Chemists. Biology, Microbiology, Chemistry, Biochemistry, Food Science majors. Dec. 92/May 93/recent graduates.

### F.Y.I.

The next issue of *Northeast Today* will be distributed on Nov. 30. The deadline for that issue is 3 p.m., Nov. 19.