



The Joseph Baldwin statue on campus has been identified among Missouri's unique outdoor sculpture. See story on p. 3.

THE KANSAS CITY STAR.

Vol. 115, Sunday, August 6, 1995, No. 323
A Capital Cities/ABC Inc., Newspaper

The new man on campus

What's in a name? If it includes a person's characteristics, and if they can be passed on to those who take his name, then Northeast Missouri State University has put itself into a pretty feisty category. The school's new moniker -- Truman State University -- won't be official until the start of the 1996-97 school year. But even before then, the image of the school will begin to change.

Not that Northeast has had any problem with its image. The liberal arts and sciences university has gained national recognition for offering top-quality education at a reasonable price. The student-teacher ratio of 16:1 is excellent: it allows intensive instruction from some real scholars. Graduates of Northeast enter the world beyond college well equipped for their new professions.

If the school takes on the best qualities of America's 33rd president, its students should acquire certain assets to go along with their learning: an open mind, guts, plain-speaking, lack of pretense, courage in the face of opposition, and a lifelong desire to learn and grow. That's a powerful combination.

It's appropriate for the school to take on a new name for other reasons as well. It marks the official recognition of a change in stature that the university already has achieved. The old name -- Northeast -- had a regional flavor to it. Nothing wrong with that: a regional appeal can be a plus. But Northeast has outgrown that name. Now, as Truman State University, it will have some real "grow room." If its past record is any indication, that "grow room" will be put to good use.

Reprinted with permission.

Northeast featured in *Bottom Line*

The Aug. 1, 1995 issue of *Bottom Line Personal* featured Northeast in the article "Great... Inexpensive Colleges." The article was based on an interview with Edward T. Custard, director of On-Line Information Services at *Princeton Review* and coauthor of *The Princeton Review Student Access Guide to the Best 306 Colleges*. Custard listed his favorite schools with high academic standards and reasonable tuitions.

"This moderately sized school, with 5,640 students, is known for being involved in assessing -- and meeting -- the needs of individual students. The school has an attractive 16:1 student/faculty ratio," read the article. Other schools listed included New College of the University of South Florida (Sarasota), Cooper Union (New York), University of North Carolina (Asheville) and St. Mary's College of Maryland (St. Mary's City). ☛

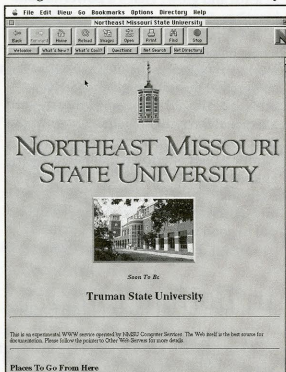
Changes to improve computer infrastructure

Many improvements to the University's computing infrastructure are taking form this fall.

According to Jon Beck, director of Computer Services, this year's focus will be placed on specifying purchasing needs, implementing the new student information system and strengthening the network. Next year, the emphasis will be on divisional and library computer needs.

Some of the improvements are a direct result of recommendations made by the President's Task Force on Computing, which was appointed by President Jack Magruder in December 1994. The Task Force, led by John Neitzke, associate professor of computer science, presented a final report in June.

An update of computing infrastructure changes that have taken place since May is listed to the right. More changes will occur throughout the academic year. Future changes will be included in *Northeast Today*.



The Public Relations Office has moved to McClain Hall 202. *Northeast Today* entries should be submitted on the *Northeast Today* forms available in McClain Hall 202. *Northeast Today* is published on Mondays. Deadline for entries is 3 p.m. the Wednesday preceding Monday's publication. All activities listed in *Northeast Today* are open to the public.



Will Keim speaks to faculty and staff about "The Education of Character," Aug. 25. The author of *The Education of Character: Lessons for Beginners*, Keim spoke to students, faculty and staff throughout the day. Keim's presentations were sponsored by Freshman Week and the NCAA.

☛ New, 486-based labs in each major residence hall, scheduled completion: Sept. 27. Labs have all new machines, new furniture, campus standard Windows applications and World Wide Web browsers.

☛ Faculty and staff now have access to the WWW in networked offices equipped with Windows or OS/2-based PCs or Macintoshes.

☛ Faculty and staff now have access to the WWW at home and in non-networked offices via dial-up PPP connection.

☛ Students have access to the WWW in public labs (Violette Hall 248 and 100) now; Barnett Hall and Pickler Memorial Library Lab will have access in two weeks.

☛ Check out our functional and expanding Northeast Web Home Page at <http://www.nemostate.edu>

☛ A committee is working this fall to provide mechanisms for student space for Web pages; a student group is working to create an electronically published journal.

☛ Everyone has faster, more trouble free network access due to upgraded and newer network servers.

◀ Northeast's Home Page on the World Wide Web.

Phi Kappa Phi to hold chapter meeting

The Honor Society of Phi Kappa Phi will hold their chapter meeting at 2 p.m., Sept. 10 in SUB 2 and 3. The chapter will address several important issues including electing a vice president, installing new officers and presenting Junior Year Phi Kappa Phi Scholarship awards. Ian Lindevald, assistant professor of physics, will deliver his inaugural address as incoming president.

For more information, contact Cornelis Koutstaal, Phi Kappa Phi chapter president.

Baldwin statue surveyed by outside sculpture group

The Joseph Baldwin memorial statue on campus has been surveyed by Missouri Save Outdoor Sculpture!, a campaign to identify the state's unique heritage of outdoor sculpture. Pieces included in the survey will be added to the Inventory of American Sculpture, a database available to researchers, professionals and others interested in outdoor sculpture. Information about each piece includes artist, title, date, material, dimensions, location, history and condition as well as photographs.

The Baldwin statue was a project of the Baldwin Memorial Committee, which was formed in the summer of 1927 to plan celebrations for Baldwin's 100th birthday. The statue faces the site of the "Old Baldwin Hall," the school's original building built by and named for Northeast's founder Joseph Baldwin.

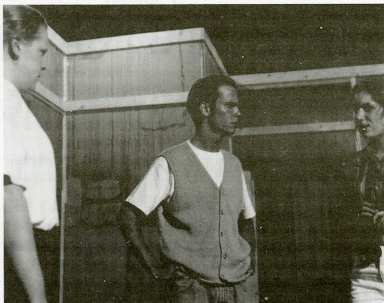
At the May 1928 com-

mencement (the first after the statue was erected), members of the graduating class paused during the academic processional while the class president placed a wreath at the foot of the statue. This practice has been a part of each commencement ceremony since and is now one of the University's time honored traditions.

The Museum of Art and Archaeology at the University of Missouri-Columbia is the coordinating agency for Missouri SOS! James and Karin Harmon, Fine Arts, and Elaine Doak, Library, are among the volunteers surveying sculpture in the northeast region of the state. The national program is sponsored by the National Museum of American Art, Smithsonian Institution and the National Institute for the Conservation of Cultural Property.

The Inventory of American Sculpture and the Inventory of American Painting are accessible on the Internet through the Smithsonian Institution Research Information System (SIRIS) network.

The Telnet address is (sirisi.si.edu). Access is direct; no login or password is necessary. The inventories are also available on the National Museum of American Art's gopher at (nmaa-ryder.si.edu). ☛



Gretchin Schiltz, Brian Claussen and Natalie De Luca perform a scene from the Theatre Department's upcoming presentation of Ira Levin's thriller *Veronica's Room*. The play will run from Aug. 29 to Sept. 1. Performances will be held at 8 p.m., in Baldwin Hall Little Theatre. Admission is free. ☛

Northeast Notables

Jim Barnes, writer-in-residence, has two poems, "Weather" and "One o'clock in the Morning," appearing in the summer issue of *Quarterly West*, an international literary journal published at the University of Utah. Barnes also has a poem entitled "Triolet for Papa" appearing in the current summer issue of the *Southwest Review*. ☛

Paul Crabb, associate professor of music and **Melissa Rose**, associate professor of music, successfully submitted "Gottheit, uber alle machtig" from Mozart's *Thamos, konig, in Agypten*

for publication with Lawson-Gould Music Publishers. ☛

Ralph Cupelli, assistant to the vice president for academic affairs, has been selected to receive the Brandon Award for 1994-95. The Dr. Edgar Ewing Brandon Award is given annually to outstanding chapter advisors of Phi Kappa Tau fraternity. ☛

Dan Janik, assistant professor of biology, had the manuscript "Cellular colocalization of fos and neuropeptide Y in the intergeniculate leaflet after nonphotic phase-shifting events" accepted for publication in

Brain Research. ☛

Closetop N. Ramesh, assistant professor of communication, presented a paper titled "The Nature and Culture of Conflict -- The Indian Case: Some Communication Implications" at the "Intercultural Communication: The Last 25 Years and the Next" conference held in Rochester, N.Y., July 13-15. ☛

Randall Smith, associate professor of music, has been selected to represent Missouri as saxophone soloist and staff member for the Missouri Ambassadors

of Music tour. The Missouri Ambassadors is a highly select concert band, choir, string orchestra, jazz band and dixieland band that will tour seven European countries on a 16-day tour. The 1996 itinerary will include concerts in London, Paris, Switzerland, Liechtenstein, Austria, Italy and Germany. ☛

Philip Wilson, assistant professor of science history, has an article titled "Reading a Man Through His Gifts: Daniel Turner's 1722 Book Donation to Yale College," that recently appeared in *The Yale University Library Gazette*.

This Week

28 Monday

7:30 a.m.—Classes begin

29 Tuesday

8 p.m.—**Veronica's Room**, Baldwin Hall Little Theatre; through Sept. 1

30 Wednesday

10 a.m.-4 p.m.—**Open House**, SUB

noon-4 p.m.—**Activities Fair**, SUB Mall

3-5 p.m.—**Reception for Ray Klinginsmith**, McClain Hall 200

7 p.m.—**Unique Ensemble Gospel Choir** open rehearsal, everyone welcome, Baldwin Hall 251

31 Thursday

5 p.m.—**Welcome Night Carnival & Barbeque**, Baptist Student Center

—**Welcome Barbeque**, Wesley House

7:30 & 10 p.m.—**While You Were Sleeping**, Baldwin Auditorium, \$2 admission

1 Friday

Slumber Party, Wesley House. Open to all students staying in Kirksville over Labor Day Weekend.

3 Sunday

6 p.m.—**Sunday supper**, Wesley House. Meals are prepared by student volunteers or friends of Wesley. The meal, which is held every Sunday, is followed by fellowship time. First meal is free, thereafter \$2.

4 Monday

Offices Closed
No Classes

5 Tuesday

5 p.m.—**Multicultural Affairs Peer Mentor Program Training Session**, SUB 2 & 3

Northeast Notes

Students may pick up applications for the 1995-96 **Who's Who Among Students Award in the Student Affairs Office, Kirk Building 112**. Faculty and staff members are also invited to nominate students for this prestigious award. Nominations are due Sept. 15. To qualify, the students should be active in campus or community activities, have a 2.75 cumulative GPA, and be a senior eligible for graduation in December, May or August of the 1995-96 academic year. Completed applications need to be returned to the Student Affairs Office by Sept. 29. For more information, stop by Kirk Building 112 or call 785-4111.

The **Help Line number is 627-4357**. The line offers information and answers to questions about sexual misconduct. The line also provides crime updates.

If you have lost items such as **books, clothing, jewelry, etc.**, call the Department of Public Safety at 785-4176 or stop by the Public Safety Building.

Volunteers and walkers for the American Diabetes Association Walktoberfest (Sept. 30) are needed. For more information, call Ranjita Misra at 785-4461 or 665-3327.

TEAMLINE Telephone Season Tickets are available by calling 800-846-4700. **TEAMLINE** allows you to listen over the telephone to play-by-play coverage of NMSU Bulldogs games.

Mentors who signed up for the Multicultural Affairs Peer Mentor Program will be required to attend a training session on Sept. 5 at 5 p.m. in SUB 2 and 3. For more information, call the Office of Multicultural Affairs at 785-4142.

Applications for paid peer reader positions are available in the Writing Center. Writers with majors or experience in English, physics, biology, chemistry or exercise science are especially needed. Application deadline is Sept. 13.

MAE student information sessions will be held for all students interested in the education field. pre-special education, Sept. 11; pre-elementary education, Sept. 26; pre-secondary education, Oct. 4. All sessions are at 4:30 p.m. in Violette Hall 172.

WATCH THE SKIES on Wednesday, Aug. 30 at 2:20 p.m.

1995-96 Lyceum Series

- ❖ Chanticleer Sept. 26
- ❖ Dr. Benedict Zobrist Oct. 9
retired director of the Harry S. Truman Library and Museum
- ❖ Nunsense II Nov. 2
- ❖ A Christmas Carol Nov. 18
- ❖ Dr. Robert Ferrell Jan. 22
American diplomatic history expert
- ❖ Joseph Holmes Chicago Dance Theatre Feb. 20
- ❖ Saint Louis Symphony Chamber Orchestra March 12
- ❖ Gov. Douglas Wilder March 19
- ❖ 42nd Street April 1

Students, faculty and staff may obtain free tickets to all performances prior to each event in the Student Activities Board Office, SUB. All performances are held at 7:30 p.m. in Baldwin Auditorium. In addition, a 2 p.m. show of A Christmas Carol will be presented.

Season tickets, which provide reserved seating, are available at the Cashier's Window until Sept. 11 for \$50.

Pickler Memorial Library Schedule Aug. 28-Sept. 4, 1995

Aug. 28-31	8 a.m.-midnight
Sept. 1	8 a.m.-10 p.m.
Sept. 2	1 p.m.-10 p.m.
Sept. 3	CLOSED
Sept. 4	6 p.m.-2 a.m.
Sept. 5	Resume Regular Fall Hours

A Reception for Ray Klinginsmith

Please join us on Wednesday, Aug. 30, from 3 to 5 p.m., as members of the University community gather in the President's Office, McClain Hall 200, to recognize the exemplary service of Ray Klinginsmith, General Counsel, who will retire from the University on Aug. 31, 1995.

Northeast Today is published on Mondays. Deadline for entries is 3 p.m. the Wednesday preceding Monday's publication. Entries should be submitted on the *Northeast Today* forms available in the Public Relations Office, McClain 202. All activities listed in *Northeast Today* are open to the public.

Revised—1995 Fall Semester University Calendar

August 21	Monday	7:30 a.m.	Fall Semester Opens
August 28	Monday	7:30 a.m.	Classes begin
September 4	Monday		Labor Day holiday (no classes)
September 16	Saturday		Parents Day
October 13	Friday	7:30 a.m.	Midterm break begins
October 16	Monday	7:30 a.m.	Classes resume
October 21	Saturday		Homecoming
November 22	Wednesday	7:30 a.m.	Thanksgiving vacation begins
November 27	Monday	7:30 a.m.	Classes resume
December 11	Monday	7:30 a.m.	Final examinations begin
December 14	Thursday	5:30 p.m.	Final examinations end
December 18	Monday	2:00 p.m.	Commencement

Final Exam Schedule for FALL 1995

All classes scheduled for two consecutive periods will take their examinations beginning the first hour of the scheduled time. For example, students in ACCT 211 (05), Accounting for Business Operations, which is scheduled from 11:30 a.m.-12:20 p.m. on Monday, Wednesday, Friday, will start their final examination on Monday, December 11, 1995, at 11:30 a.m.

Any student who has three examinations on the same day may appeal to the Vice President for Academic Affairs no later than Friday, December 1, 1995 for permission to take one examination at a rescheduled time.

	7:30-9:20	9:30-11:20	11:30-1:20	1:30-3:20	3:30-5:20
Monday, December 11, 1995	7:30 MWF	10:30 TTH	11:30 MWF	2:30 TTH	3:30 MWF
Tuesday, December 12, 1995	7:30 TTH	9:30 MWF	11:30 TTH	1:30 MWF	3:30 TTH
Wednesday, December 13, 1995	8:30 TTH	10:30 MWF	12:30 TTH	2:30 MWF	4:30 TTH
Thursday, December 14, 1995	8:30 MWF	9:30 TTH	12:30 MWF	1:30 TTH	4:30 MWF

Revised—1996 Spring Semester University Calendar

January 10	Wednesday	7:30 a.m.	Classes begin
January 15	Monday		Martin Luther King Day (No classes, offices closed)
March 4	Monday	7:30 a.m.	Midterm break begins
March 11	Monday	7:30 a.m.	Classes resume
April 5	Friday	7:30 a.m.	Spring vacation begins
April 8	Monday	7:30 a.m.	Classes resume
May 1	Wednesday		Reading Day
May 2	Thursday	7:30 a.m.	Final examinations begin
May 7	Tuesday	5:30 p.m.	Final examinations end
May 11	Saturday	2:00 p.m.	Commencement