

NORTHEAST

Today

Northeast Missouri State University

Inauguration Issue

April 22, 1991

Active Learning Symposium to Highlight Inauguration Week

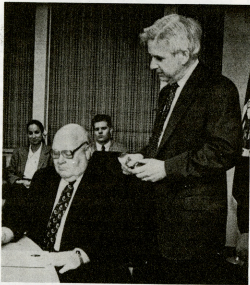
Four nationally known individuals in higher education will be on campus April 24 to conduct a symposium on Active Learning as part of the events for Inauguration Week. Charles Schroeder, vice president for student development at Saint Louis University, will speak on "Active Learning Across the Campus" at 10:30 a.m. Sharon Rubin, dean of the Fulton School of Liberal Arts at Salisbury

State University, will discuss "Active Learning: Knowing and Doing" at 1:30 p.m. Ted Marchese, vice president of the American Association of Higher Education, will expound on "Active Learning in the Classroom" at 3:30 p.m. Arthur Levine, educational chair at the Institute for Educational Management at the Harvard Graduate School of Education, will lecture on "Active Learning: A Retrospective and Pro-

spective" at 7 p.m. All presentations will be given in the SUB Activities Room.

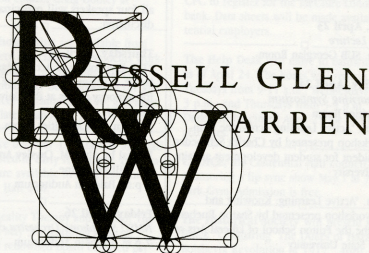
The three sessions during the day will be conducted in workshop format so that all participants may be actively involved. The evening presentation by Levine will be in a lecture format, followed by a panel discussion involving all four panel members and the audience.

City Recognizes Inauguration



Kirkville Mayor Tom Duden signs a resolution from the city of Kirkville in honor of the Inauguration of Russell G. Warren as the 12th president of Northeast Missouri State University. Warren will be inaugurated at 2 p.m., April 27, in Pershing Arena.

The Board of Governors
and The Inauguration Committee
of Northeast Missouri State University
Request the Honor of Your Presence
at the Inauguration
of the University's Twelfth President



April 27 **Inauguration**
2 p.m. Pershing Arena
Open reception
Immediately following Inauguration
McClain Hall Circle Drive

Chicago Tribune Lauds Northeast

The April 7 issue of the *Chicago Tribune* featured a story, "College Tuitions Going Up, but at Slower Rate," by Carol Jouzaitis in which Northeast is mentioned as a public school that has benefited from the trend of people considering state schools because they are cost conscious.

"The campus, which has 5,800 students in Kirksville, Mo., about 90 miles west of Quincy, Ill., has 'seen incredible

growth from Illinois students,' said Kathy Rieck, dean of admissions."

The article listed private schools that compete with Northeast for students such as Bradley University, Drake University and Illinois Wesleyan University. Also compared were Northeast's cost of tuition, and room and board, which the feature stated are well below the cost of most private schools.

14 Seniors Lead 1991 Senior Class Project

The class of 1991 has begun work on the annual NMSU Alumni Association/Senior Class Project, a drive to encourage graduating seniors to become life members of the NMSU Alumni Association. A central committee, consisting of 14 seniors, is directing this year's campaign.

Initiated in 1987, the project promotes the advantages of Association members and the 50 percent discount given to seniors on lifetime membership, if paid by Dec. 31 of the graduation year.

Lifetime membership for graduating seniors is \$50, or \$60 for a joint lifetime membership (husband and wife). A lifetime member never pays annual fees. Annual membership is \$10 or \$13 for joint membership.

The benefits available to Association members include a subscription to *Nemo*.

scope Notes and a copy of the annual limited-edition NMSU poster/calendar, as well as discounts on Homecoming event tickets and merchandise sold through the Alumni Office and the Campus Bookstore catalog. In addition, only Alumni Association members can purchase NMSU license plates.

For more information on the Alumni Association/Senior Class Project, contact the Alumni/Development Office, McClain Hall 101, or one of the following seniors.

Mary Pat Brown	Chad Boore
Leslie Heusted	Kurt Haas
Greg Hinsley	Gail Schmitt
Ed Job	Angela Shirk
Jenny Lauth	Amy Ricker
Tiffany Morton	Jeff Ridinger
Robert Behnen	Brian Deevers

Inauguration Schedule

Monday, April 22

All faculty meeting

4:30 p.m. SUB Georgian Room

Tuesday, April 23

Baldwin Lecture

6:30 p.m. SUB Georgian Room

Wednesday, April 24

Active Learning Symposium

SUB Activities Room

10:30 a.m. "Active Learning Across the Campus" workshop presented by Charles Schroeder, vice president for student development at Saint Louis University

1:30 p.m. "Active Learning: Knowing and Doing" workshop presented by Sharon Rueben, dean of the Fulton School of Liberal Arts at Salisbury State University

3:30 p.m. "Active Learning in the Classroom" workshop presented by Ted Marchese, vice president of the American Association for Higher Education

7 p.m. "Active Learning: A Retrospective and Prospective" summary lecture presented by Art Levine, educational chair for the Institute

for Educational Management at Harvard Graduate School of Education

Immediately following Dr. Levine's lecture, all four speakers will participate in a panel discussion.

Thursday, April 25

"The Psychology of Active Learning" presented by Dr. William Parker, former vice chancellor for minority affairs at the University of Kentucky

3-4 p.m. SUB Activities Room

Recital by Alvin M. Owsley Artist-in-Residence

Dr. William Blaine

8 p.m. Baldwin Auditorium

Friday, April 26

NMSU Symphony Orchestra concert

7 p.m. Baldwin Auditorium

Saturday, April 27

Inauguration

2 p.m. Pershing Arena

Open reception

Immediately following Inauguration
McClain Hall Circle Drive

CPC UPDATE

For more information, call the Career Placement Center at 785-4353 or stop by McKinney Center. Reserve your interview by signing up in the CPC, McKinney Center. Sign-up folders for each recruitment visit are posted two weeks before the interview date. Resumes are due two days prior to the interview unless otherwise specified.

April 24

Union Pacific Railroad—customer service representatives (communications, business and liberal arts majors)

Farmers' Insurance—resumes due - agents (all majors)

April 26

Ottumwa Police Department—police officer (justice systems majors)

Pizza Hut, Inc.—assistant managers (all majors)

April 29

Clayton (Mo.) School District—educational internships

April 30

Farmers' Insurance—interviews

Candidates for Elections

President	Amy L. Enderle
Vice President	Kay Anderson Glenn Gallo
Secretary	Tamara Vega
Treasurer	Steve Eiken J.R. Ping
Councilperson-at-large	Teri Brickley Keith Gallo
Councilwoman	Sally Cornelison Heather Stanton Alison Tanner Nancy Mee Kim Stecher Debi Weaver
Councilman	Joseph J. Bambenek Randy Rantz Mike Hritz
Senior Rep	James Leingang Eric Riesenberg Kelly O'Neill Jeff Milke Lauren Reinhold Vidya Sagara
Junior Rep	Tony Harris Mark Miller Tara Laverne Nickens Terry Masters
Sophomore Rep	Steven Nipper John Haley Rich Davis Gregory T. Cotton James Good Dondra Ward

Elections April 23 and 24

9 a.m.-4 p.m. • Rooms 2 and 3, SUB

N O T E S

Students interested in working in the fall 1991 semester as Peer Readers in the Writing Across the Curriculum Program may apply through April 29 in the Writing Center, McClain Hall 303. To qualify, students must have successfully completed ENG 100 and must submit a letter to the Writing Center Director detailing their qualifications and interest in working as Peer Readers. Positions pay a \$250 research stipend per semester. Scholarship students are also eligible. For more information call the Writing Center at 785-4484.

Michelle Demerly, a senior English major, will present "An Introduction to Early American Women Writers: Anne Bradstreet and Phillis Wheatley," May 2 at 7 p.m. in SUB 2 and 3.

Color Me Greek! Freshman, sophomore and junior women considering the fall 1991 sorority rush should sign up outside the Greek Life Office in Brewer Hall to receive summer rush mailings and information.

Steve Smolinski, a senior English major, will present "The Native American and Literature," May 2 at 8 p.m. in Ophelia Parrish 117. This presentation, a requirement for senior seminar class, will feature a discussion of literature by and about Indians of the Great Plains region.

The Division of Education is offering ED 389, Foundations of Education, during the summer session. This course has a limited enrollment, and will be first come, first serve. Prerequisites for enrollment are: junior status, a 2.75 GPA and an 18 ACT (or enhanced ACT of 20). The class will meet 2-4 p.m., Monday-Friday in Violette Hall 251.

The Center for Service-Learning encourages students and faculty to volunteer for community service. Groups and individuals are badly needed to assist local agencies with the delivery of on-going services and special one-time projects. CS-L has several unmet community and campus needs on file. The Adult Basic Education program needs volunteers to help non-reading adults learn to read. The Salvation Army can use either individuals or groups to help them ready merchandise for sale in the Thrift Store. The Red Cross needs people to sponsor and assist with blood drives. The Adair County Library needs volunteers to read to children and to help with general library tasks. Student organizations may wish to consider community service projects to coincide with the annual Kirksville Spring Clean-Up scheduled for April 29-May 10. The University needs a group to help sort materials for recycling. The Kirksville Recycling Committee can use assistance in the community pick-up. Public Service is an opportunity to become involved in the community, learn of problems facing communities and hardships experienced by different groups of people, and make a positive contribution toward total community betterment. A commitment of one to two hours a week by just a fourth of the university community would result in 1500 to 3000 hours of serv-

ice per week. Imagine the impact of such an effort on easing personal distress of the less fortunate or on community betterment and environmental improvement. You may be the difference that enables a non-reading father to read stories to his children or get a better job. Your help might make the difference in the total amount of blood collected. The community needs your help. Call the Center for Service-Learning at 785-4572 or stop by 120 Barnett Hall. We will refer you or your organization to an appropriate service agency.

Students involved in a heterosexual relationship for a minimum of six months are needed to participate in a study. Students in long-distance and short-distance relationships are invited to participate. Please call Julie Abkecieir at 665-8340.

The Environmental Forum Lecture Series presents James Skillen, executive director of the Center for Public Justice, April 25 at 7:30 p.m. in the SUB Tangerine Room. Skillen will discuss "Can Politics Do Justice to the Land: Interest Group Liberalism and the Environment."

Members of the First United Methodist Church will be opening their homes as "bed and breakfast" places for the weekend of Northeast graduation, May 17-19. If you need a room for the night, call 665-4231 after 6 p.m. All proceeds will be donated to the Epworth Children's Home in St. Louis.

The Newman Center will be sponsoring Habitat for Humanity Work Day, May 4-5 in Ottumwa, Iowa. Habitat for Humanity is a service organization with a Christian orientation which builds houses for needy families. For more information contact Craig Dooley at 785-4725.

Three \$500 scholarships are available from the Campus Safety Association for students working toward a degree in occupational safety or health. Applications may be obtained in the Financial Aid Office, McClain Hall 100, and must be returned no later than April 24.

Applications are due May 1 for faculty and staff members interested in early retirement. Information and forms are available in the President's Office, McClain Hall 200.

A seminar in Reality Therapy and Control Theory will be held May 3-4 featuring William Glasser, a world renowned board certified psychiatrist. For more information contact the Division of Professional Development, Baldwin Hall 110.

Four students are wanted to work two hours per day for the Center for Service-Learning. Good oral and written communication skills are required. Knowledge of computer applications and experience in community service is desirable. Successful applicants will be expected to participate in a two-day training session prior to

the opening of school in the fall. Applicants will be accepted through May 1. For additional information, contact the CS-L at Barnett Hall 120 or call 785-4572.

The Cumberland Group, an interdisciplinary research group, is now accepting applications for the fall 1991. If accepted, researchers will be expected to work five-seven hours per week and work is renewable. Applications, due May 1, are available in the Vice President for Academic Affairs Office, McClain Hall 203.

Summer housing will be available June 2-Aug. 9 in Centennial Hall and Campbell Apartments. Contracts are available in McClain Hall 204 with a suggested deadline of May 1.

Delta Chi social fraternity and **Sigma Sigma Sigma** social sorority are sponsoring "Run to the Border," a relay race from Kirksville to the Iowa border, April 27. Pledge/donation tables will be set up April 25-26 in Violette Hall and McClain Hall. Proceeds will go to the Coalition for Literacy Foundation.

Check out the 1991 International Workcamp Directory at the CPC for information about an inexpensive way to travel and live in a foreign country. Construction, restoration, environmental, social, agricultural and maintenance workcamps are common options.

The CPC has the right directory for your needs. Whether it be business, graduate school or the Chamber of Commerce directories, the CPC will help you find the right one.

All minority students at the junior through graduate levels are encouraged to stop by the CPC to register for the McClure-Lundberg job bank. Data sheets will be made available to potential employers.

The Help Desk will move to Baldwin Hall 100 as of April 24. The hours will remain the same: Tuesdays from 9-11 a.m.; Wednesdays from 1-3 p.m.; and Thursdays from 3-5 p.m. The Help Desk will be closed April 25 for Inauguration activities.

CHOICE, the Centennial Hall council, will be sponsoring a lip sync show May 1 at 7 p.m. in Kirk Gym. Admission is free.

The Historical Society will present Kenneth Brock "Comparing 'The Dukes of Hazzard' to the Bolshevik Revolution of 1917," April 30 at 3:30 p.m. in SUB 2 and 3.

SAB presents NMSU Live, May 6 at 8 p.m. in the McClain Hall circle drive. The event will be held in Kirk Gym in case of rain. The theme is "A Night on the Drive."

THIS WEEK

22 MONDAY

- **Bakesale** sponsored by Pi Delta Phi French honor society, McClain Hall
- 2:30 p.m.—**MFAT: Business Senior Test**, SUB Activities Room
- 7 p.m.—**Student Senate Vice-Presidential Debate**, Kay Anderson vs. Glenn Gallo, SUB Alumni Room. Open to all students and faculty.
- 8 p.m.—**Prokofiev Festival**: faculty and student performances, Baldwin Auditorium —**Student Senate Councilperson-at-large Debate**, Keith Gallo vs. Teri Brickey, SUB Alumni Room. Open to all students and faculty.

23 TUESDAY

- **Robin Winslow**, senior show, Baldwin Hall second floor, through April 25
- 9 a.m.-4 p.m.—**Student Senate elections**, also April 24
- 2:30 p.m.—**MFAT: Business Senior Test**, SUB Activities Room

24 WEDNESDAY

- 2 p.m.—**Women's softball** vs. Columbia College, University softball field
- 2-3 p.m.—**Division of Education open house**, Violette Hall 241. Refreshments will be served.
- 4 p.m.—**"From the Gulf War to One Earth,"** presented by Arthur Waskow, director of the Shalom Center in Philadelphia, SUB Alumni Room
- 4:30 p.m.—**"Shall We Dump the Core?"**, The University Forum, SUB Snack Bar
- 5:30-6:30 p.m.—**"The Research Component Defined,"** MAE Intern Workshop, SUB Tangerine Room
- 7 p.m.—**"The Prodigal Son,"** presented by the Latter-Day Saint Student Association, McClain Hall 208
—**Black History: Lost, Stolen or Strayed**, installment of the Cultural Expressions film series, Violette Hall 111

25 THURSDAY

- 9 a.m.-noon—**Speech screening** for clearance for COMM 170, Violette Hall 161
- 10 a.m.—**Center for Service-Learning** ribbon cutting ceremony, Barnett Hall 120
- 3-4 p.m.—**"Psychology of Active Learning,"** presented by Dr. Bill Parker, Activities Room, SUB
- 7:30 p.m.—**"Can Politics Do Justice to the Land: Interest Group Liberalism and**

the Environment," lecture by James Skillen, SUB Tangerine Room. See Notes.
• 8:30-9:30 p.m.—**NMSU Live Tryouts**, SUB 5

26 FRIDAY

- 8:30-9:30 a.m.—**"The Heart of the Matter: The Importance of Staff and Support Staff,"** presented by Dr. Bill Parker, Activities Room, SUB
- 10:30-11:30 a.m.—**"Academic Advising with Minority Students,"** presented by Dr. Bill Parker, Alumni Room, SUB
- 1 p.m.—**Men's baseball** vs. Southern Illinois-Edwardsville, University baseball field

27 SATURDAY

- 8 a.m.—**Medical College Admissions Test**, McClain Hall 208
- 9 p.m.-1 a.m.—**"Puttin on the Ritz,"** Dobson and Centennial Halls semi-formal, Travelers Inn Ballroom. Tickets are \$5 for singles and \$7 per couple.

28 SUNDAY

- 7:30 p.m.—**"Swann in Love,"** installment of the French Club's film and dessert series, McClain Hall 302. Admission is free and creme puffs are 50 cents.

29 MONDAY

- 2:30 p.m.—**Industrial Science, Justice Systems and Communication Disorders Senior Tests**, SUB Activities Room
- 8 p.m.—**Lori Fowler's** graduate conducting recital, Baldwin Auditorium

NOTABLES

Patricia Burton, assistant professor of philosophy, gave an invited paper, "The *Natura Nuda* in Formal Attire" at an international History of Logic conference, April 11-13, sponsored by the Departments of Philosophy, History and Classics at the University of Texas-Austin.

Roger Cody, professor of music, received a contract from Federal Music to publish six of his brass band arrangements. The first installment is an arrangement of three works by Brahms. One of the arrangements, Brahms' *Geistliche Lied*, will be premiered by the U.S. Army Brass Band in a guest appearance at the National Brass Band Competition in Cedar Rapids, Iowa, April 27. This recent contract

represents the 17th arrangement of Cody's to be published this academic year.

Anthony Cooperwood, sophomore piano performance major, won second place in the Undergraduate Piano Competition at Western Illinois University. His award included a \$250 prize plus a performance in the master class of Anton Nel of the Eastman School of Music.

Keith Doubt, assistant professor of sociology, **Dennis Wasmer**, a sophomore sociology/anthropology major, **Tom Wright**, a junior sociology/anthropology major, and **Joseph Dunne**, a junior psychology major, recently attended the centennial celebration of the United States' first Department of Sociology at the University of Kansas.

Marlow Ediger, professor of education, has been appointed by the National Council for the Social Studies to serve on their Professional Ethics Committee.

Miles Lovelace, professor and head of the Division of Education, **Janice Grow**, professor of education and **Scott Olson**, associate professor of education, attended the American Educational Research Association meeting in Chicago, April 3-7. Olsen presented a paper to Division J Post-Secondary Education titled "Examining the Relationship between College General Education Science-oriented Course Work and CAAP Science Reasoning Scores." Grow presented three papers: "Teacher Education Reform and Curriculum Change: Four Cases" for Division B Curriculum; "Teacher Education and the Role of External Actors: Four Case Studies" for Division K Teacher Education; and "Question/Response Patterns in Middle and Secondary Schools in Indonesia" for Division G Social Context of Education.

David McKamie, associate professor of music, presented a lecture-recital, "Rückblick: A Lecture-Performance of the Brahms Sonata in F minor, Op 5," at the Piano Forum IV at Western Illinois University. He also judged the Senior Piano Competition at WIU. Earlier this semester, McKamie performed a recital in Memphis, Tenn., at Rhodes College which received a favorable review in the Memphis *Commercial Appeal*.