

Undergraduate Research Symposium set for April 7 *Egyptologist to present address*

Stuart Tyson Smith, the Egyptologist responsible for the ancient Egyptian spoken on the film *Stargate*, will be the luncheon speaker at the eighth annual Undergraduate Research Symposium on April 7.

In his presentation, Smith will speak on his experiences as a scholar working in Hollywood. The presentation will begin at 12:40 p.m. in the SUB Georgian Room and is open to anyone who wants to attend.

More than 150 presentations will be given throughout the day. Program and abstract brochures will be available. A complete list of symposium topics, presenters and mentors is included in an insert in this issue of *Northeast Today*. All sessions are open to the public.

Smith, who has a doctorate in archaeology from the University of California-Los Angeles, was hired as a consultant for the film company in 1993. He translated dialogue from English into ancient Egyptian, a language written without any vowels, and worked out the sound of the

words through careful study of ancient hieroglyphs. In addition, he relied heavily on the sound of Coptic, the language spoken in the liturgy of the Egyptian Christian Church, and a late descendant of the ancient Egyptian language.

Smith has excavated extensively in Egypt, serving most recently as field director for the UCLA/German Archaeological Institute excavations at Dra' Abu el-Naga, Luxor, Egypt. He is the author of several articles on ancient Egyptian archaeology, language and art as well as the forthcoming book *Askut in Nubia*, a study of an Egyptian fort now lost beneath the waters of Lake Nasser.

In addition to speaking at the symposium luncheon, Smith will be spending the week of April 2-7 on campus. During this week, Smith will lecture to classes on his specialties of Egyptian Imperialism and Egyptian burial practices, as well as meeting with students interested in careers in the film industry. ☺

Reception planned for retiring division heads

Lanny Morley, vice president for academic affairs, will host a retirement reception April 10 at 3 p.m. in the SUB Activities Room for Ed Carpenter, Bob Stephens, Lois Korslund, George Hartje and Wayne Newman.

"This retirement reception gives the entire Northeast University community an opportunity to say goodbye to five distinguished academic division heads who will be retiring at the end of this semester," Morley said. "I invite staff, faculty and students to join us and thank these five distinguished educators who have contributed so much to the entire University community over the years." They will be joined by their spouses at the reception.

Edwin Carpenter will retire after 22 years of service. He is currently the head of the Division of Language and Literature, and has held the position of professor of language and literature.

Robert Stephens will retire from his positions as professor of industrial education and director of the University Career Center, the Center for Service-Learning and the 1000 Hills Summer Youth Program. He was first hired in 1971 as an assistant professor in the Practical Arts Division.

cont., p. 2.

KPD continues investigation

The following information has been released by the Kirksville Police Department.

The Kirksville Police Department continues its investigation into two recent sexual assaults that have occurred in the Kirksville area.

There have been numerous rumors circulating the last several days regarding increased numbers of sexual assaults. The Police Department, the Department of Public Safety, the Adair County Sheriff's Office and Victim Support Services have not received reports that substantiate these rumors.

Investigators continue to pursue leads in the case although a firm suspect(s) has not been identified. The public has volunteered a lot of information and each piece is being carefully considered as the investigation progresses.

The Police Department has increased night time vehicle patrols in the area of the assaults as well as foot patrols. Investigators have canvassed the immediate neighborhoods for information and have circulated flyers within those same areas. ☺

Northeast Notables

Martha A. Bartter, associate professor of English, has been elected to serve a three-year term as treasurer of the International Association of the Fantastic in the Arts. The announcement was made at the conference of the International Association of the Fantastic in the Arts held in Fort Lauderdale, Fla. She also chaired a session on children's films and presented a paper titled "Desacralization of Image and Confusion of Sexuality in the Disney Studio's *Beauty and the Beast*."

Laura K. Bode, junior computer science major, was recently selected for inclusion in the Computing Research Association's Distributed Mentor Program, funded by the National Science Foundation. Bode will spend the summer performing research at the University of South Carolina with computer science professor Caroline Eastman. The CRA received 78 student applications and funded 30 students. Bode joins fellow computer science students from universities throughout the United States including George Mason University, Dartmouth and Duke University.

Greta Lyons, public safety officer, successfully completed the 300-hour Basic Law Enforcement Training offered by the Law Enforcement Training Institute School of Law and University Extension, certified by the Missouri Department of Public Safety pursuant to Section RSMo 590.120.

Christopher Maglio, assistant professor of counseling, has been elected to a two-year term as secretary of the Missouri Counseling Association, a state branch of the American Counseling Association. Maglio has also been appointed to the editorial board of the *Journal of College Student Development*, the official journal of the American

Reception, cont. from p. 1.

His positions over the past 24 years have included head of the Division of Industrial Science and head of Division of Practical Arts.

Lois Korslund will retire as advisor and researcher on academic achievement. Korslund has held the title of head of the Division of Home Economics, professor of home economics, and acting head of the Residential College Division.

George Hartje first came to Northeast in 1964 as the director of Libraries and

Museums. His greatest achievement here has been his stewardship of the library renovation, which nearly doubled the size of Pickler Memorial Library and made it the hub of the campus learning environment it is today.

Wayne Newman has been a member of the administrative staff since 1965, serving as the head of the Division of Professional Development and, for the past four years, director of Commuter College.

College Personnel Association.

Rebecca Payne McClanahan, assistant professor of nursing, has been notified that her manuscript titled "Content Analysis of Alcohol and Drug Dependent Nurses' Perceptions of the Process of their Dependency and Recovery," written with Eleanor J. Sullivan of the University of Kansas, will be published in the next issue of the peer-reviewed *Journal of Substance Abuse*.

Fairleigh Dickinson University officials visited Northeast March 20 to learn about our assessment program. Peter Falley, dean of the College of Arts and Sciences; Kenneth Green, chair of the Social Science/History Department; and Ronald Strange, chair of the Chemistry Department visited with President Magruder and several faculty members throughout the day.

University Career Center

For information about and applications for the following opportunities, contact the University Career Center, 785-4353.

The U.S. Office of Personal Management has paid opportunities available in their new Student Educational Employment Program. Stay-In-School, Federal Junior Fellowship and Summer Aid programs offer the chance to gain valuable work experience related to your field of study while you're still in school.

The Bryn Mawr Post-Baccalaureate Premedical program takes one full academic year plus a summer. More than 90 percent of the post-baccalaureate students are accepted to medical schools. Admissions decisions are made on a rolling basis.

The Adair County Historical Society Museum has a job opening for June 1995. The position of museum director will be opening in late May. The deadline for letters and resumes is April 6, 1995. Applicants may contact Adam J. Marchand, director, at his office at 665-6502 and may mail applications to P.O. Box 342 (Kirksville) or drop them off at the ACHS Museum located behind the Bank of Kirksville at 211 S. Elson.

Zygmunt to present recital of original compositions

Adam Zygmunt, a senior music composition major from St. Louis, will present a recital of original compositions for synthesizer, computer, voice and acoustic instruments on April 9 at 8 p.m. in Recital Hall (Baldwin Hall 156). *Lump It*, *Sleep Deprivation*, *You've Got to be Kidding* and *Three Short Pieces for Piano in Search of a Better Title* will be included in this offering of truly eclectic and original works.

Northeast Notes

The Department of Public Safety has many lost items including books, clothing, jewelry, etc. If you have lost something, call 785-4176 to inquire.

The Take Five Gamesroom is taking applications for the indoor recreation and publicity coordinator for 1995-96. The position coordinates tournaments and special events, and promotes the Gamesroom. Applications and information are available in the CAOC. Deadline is April 13.

The Help Line (627-4357) is available for those who need someone to listen, to help or to provide answers and information about sexual misconduct. Crime updates concerning the campus are also available.

The Writing Center is accepting applications for writing consultants for fall 1995. Deadline is April 21. Contact the Writing Center, McClain Hall 303, for more information.

The Comm 170 speech screening make-up day will be held April 21 from 9:30-11:30 a.m. and 1:30-4 p.m. in the Speech Clinic, Barnett Hall 121. The speech screening is a requirement for all students enrolled in Comm 170.

Omicron Delta Kappa National Honorary Leadership Society applications are available at the CAOC office. Juniors and seniors with a 3.3 GPA or higher who have exhibited leadership ability are encouraged to apply.

The Language Learning Center is accepting applications for student workers for the next school year. Applications can be picked up in McClain Hall 304. Deadline is April 13.

An Evening of Etiquette will be presented by Patrick Lecaque, director of the Center for International Education Abroad on April 11 at 5:30 p.m. in the SUB Georgian Room. The cost of the meal is \$5.50 with and \$7.50 without a meal card. Registration will be in the Violette Hall north entrance from 9:30 a.m.-1:30 p.m. and in the SUB from 4-6 p.m., April 3-7. The event is sponsored by Delta Sigma Pi.

Rotary Foundation Scholarship assists Northeast students

Rich Lender, a Northeast graduate, recently spent a year in New Zealand on a Rotary Foundation Scholarship. This scholarship is awarded to those who hold a bachelor's degree and are eager to become "ambassadors of good will" in a foreign country.

Lender first read about the opportunity on the board outside of the Academic Planning Service Office.

"That board has changed people's lives," according to Lender. With encouragement from Elsie Gaber, Academic Planning Services, Lender applied for the Scholarship and along with two other graduates of different universities was awarded the opportunity to study for one year at the institution of his choice.

To be eligible for a Rotary Foundation Scholarship, a

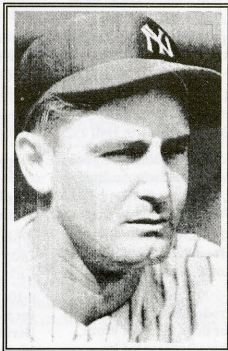
Former N.Y. Yankee to appear on campus

Baseball nostalgia fans are sure to enjoy Johnny Sturm, former first baseman of the 1941 World Champion New York Yankees and featured guest for "Baseball and the War," a program on April 10 at 7:30 p.m. in Ryle Hall main lounge.

Teammate of Joe Dimaggio and Phil Rizzuto, Sturm is a St. Louis native who played for the minor league Kansas City Blues in 1939 and 1940. His 1941 season with the Yankees was highlighted by Dimaggio's 56-game hitting streak and World Series victory over the Brooklyn Dodgers. He served in World War II and played in exhibition baseball games, entertaining troops in the South Pacific. Sturm became a major league scout and is credited with "discovering" Mickey Mantle who was signed by the Yankees.

The program will begin with film clips from Ken Burns' *Baseball* that cover the events of the era followed by Sturm's personal account and responses. A question-and-answer period will follow.

Funding for this program has been provided by the Division of Social Science, the University Speakers Series, the Residential College Program and Ryle Hall.



graduate must be 18 to 30 years of age, be proficient in the language of the host country, and be a citizen of a country in which there is a Rotary Club. The scholarship covers transportation between home and study cities, some educational supplies, academic fees and on-campus housing and meals. In return, the scholarship recipient is asked to give a few presentations in his/her host community and write a paper detailing their experiences.

This year, two Northeast graduates received Rotary Scholarships. Peter Zeihan and Paul Popiel will be traveling to New Zealand and Scotland respectively.

For more information about Rotary Scholarship opportunities, contact Marilyn Romine at 785-4303 or Gaber at 785-4136. Application deadline is 20.

This Week

3 Monday

Noon--Baseball v. Missouri
Northern State College

4:50 p.m.--"Regulation v. Strangulation: Issues Involving the Environmental Protection Agency," presented by Charles Foudree, SUB Activities Room

7 p.m.--Steve Schad from Lt. Governor's Office speaking on AmeriCorps, Ryle Hall main lounge

7-11 p.m.--Free babysitting during Lyceum Series provided by Panhellenic Council, Baldwin Hall 252.

7:30 p.m.--Othello, Lyceum Series, Baldwin Auditorium

4 Tuesday

11 a.m.-4 p.m.--Red Cross blood drive, SUB Activities Room; through April 6.

4-5:30 p.m.--"Stress v. Productivity: Implications for the American Work Force," presented by Charles Foudree, SUB Alumni Room

6 p.m.--Educator of the Year banquet, SUB Georgian Room. Tickets cost \$3 for students with a meal plan, \$4 without and \$8 for faculty and staff.

5 Wednesday

9 p.m.--"Spiritual Discipline of Solitude," Wesley House, 903 S. Davis

6 Thursday

Dog Days 1995 through April 8. Music on the Mall

3:30 p.m.--Kolenberg-Towne Lecture featuring Brian Armstrong, professor of history at Georgia State

University, SUB Alumni Room

4:30-6:30 p.m.--Dog Days kick-off/fashion show, SUB Main Street

6:30 and 9:30 p.m.--SAB Movie: Disclosure, Baldwin Auditorium. Admission is free with a student ID.

7:30 p.m.--Magician and Master of Illusion, Rick S. Wilcox, SUB Main Street

8 p.m.--The President's String Quartet, Faith Lutheran Church

8:30 p.m.--MORP Dance, sponsored by CHOICE, Kirk Gym

7 Friday

Dog Days-- Music on the Mall all day

Women's Golf-- Northeast Lady Bulldog Classic, Kirksville Country Club

9-10a.m.--Open meeting for faculty and staff with Division of Libraries and Museums Director candidate Rodney Henshaw, SUB Spanish Room; also at 2:30-3:30 p.m. in Baldwin 100.

7 p.m.--MisLed pageant, Baldwin Auditorium
--"Ah, Baseball!" poetry reading by Northeast faculty, Used Books and Unicorns, 305 S. Franklin

8 p.m.--FCA Slam Dunk contest, Pershing Arena

8:30 p.m.--Casino Night, Centennial Hall

10 p.m.-6 a.m.--Volleyball Tournament, Pershing Arena

11 p.m.--Zeta Phi Beta Step Show, Kirk Gym

8 Saturday

8 a.m.--GRE-general, SUB Activities and Tangerine rooms

--ACT Assessment, Violette Hall 170, 172, 266, 290

9 a.m.--Board of Governors meeting, SUB Conference Room

11 a.m.-5 p.m.--Dog Days carnival, on the Quad

--Yard Sale, Blanton/Nason courtyard

1 p.m.-5 p.m.--Day of the Dog Bandfest featuring Gouge, Emilyloyd, and Life in General on the Quad.

2 p.m.--GRE-Subject Tests, SUB Activities Room

--"If You're Going To Soar With The Eagles, You Better Stop Hooting With the Owls," David Hahs, SUB Tangerine Room

6 p.m.--Aaron Berns Memorial Remembrance, SUB Alumni Room

7 and 9:30 p.m.--SAB Movie: Dumb & Dumber,

Baldwin Auditorium. Admission is free with a student ID.

9 Sunday

2 p.m.--Phi Kappa Phi initiation ceremony, SUB Alumni Room. Patricia Burton will be the featured speaker. All Phi Kappa Phi members and friends are welcome to attend.

3 p.m.--Senior piano recital featuring Hiromi Saeki, SUB Activities Room

8 p.m.--Senior recital featuring Adam Zygmunt, Baldwin Hall 156 (Recital Hall). See story, p. 2.

10 Monday

Rape Awareness Week through April 12

6:30 p.m.--Ekklesia, "Becoming a Christian" devotional and video, Ophelia Parrish 208

7 p.m.--"The Trials of a Rape," mock trial sponsored by STEP, Ryle lounge

7:30 p.m.--"Baseball and the War," see story p. 3.

Open meetings for faculty and staff

with Division of Libraries and Museums Director candidates

Friday, April 7 ♦ Rodney Henshaw
Director of the Public Services Division at Woodruff Library, Emory University
9-10 a.m. SUB Spanish Room
2:30-3:30 p.m. Baldwin Hall 100

Tuesday, April 11 ♦ G. Lynn Hufford
Director of Library and Media Services, Indiana University East
9-10 a.m. SUB Room 4
2:30-3:30 p.m. Baldwin Hall 100

Northeast Today is published weekly on Mondays. Deadline for entries is 3 p.m. the Wednesday preceding Monday's publication. Entries should be submitted on the Northeast Today forms available in the Public Relations Office, McClain 106. All activities listed in Northeast Today are open to the public.

Undergraduate Research Symposium

Friday, April 7 ♦ Student Union Building ♦ 8 a.m.-5 p.m.

The Eighth Annual Undergraduate Research Symposium will be April 7 in the Student Union Building. A total of 152 presentations will be made from 8 a.m. to 5:15 p.m. during six concurrent sessions. Papers include oral presentations, poster sessions and demonstrations.

As part of the day-long activities, Phi Alpha Theta is sponsoring a History Symposium in the Conference Room from 1:30-3:45 p.m.

The Symposium Luncheon presentation will be given by Dr. Stuart Smith, an Egyptologist at Institute of Archeology at the Fowler Museum of Cultural History in Los Angeles. (See related story, p. 1.) His presentation will begin at 12:40 p.m. in the Georgian Room and is open to the public.

The Undergraduate Research Symposium showcases student involvement and the diversity of research on campus. It is truly an interdisciplinary educational forum.

SESSION A

Tangerine Room

8 a.m.—*Spectroscopy of Tetratolylporphyrin on Quartz and Modified Quartz Surfaces*
Tasha Schoenstein
Griffith Freeman, mentor

8:15 a.m.—*Surface-Enhanced Raman Studies of Haloacetic Acids*

Dawn R. Clifton
Griffith Freeman, mentor

8:30 a.m.—*Surface-Enhanced Raman Spectroscopy of N,N-Dimethyl-Nitrosoaniline*
Paul Grutter
Griffith Freeman, mentor

8:45 a.m.—*Effect of Varying Sucrose Concentration in the Reaction Chamber on Respiration of Mitochondria Isolated from Maize Shoots during Oxidation of Proline, Succinate and Exogenous NADH*

Swati S. Baxi and Christine Healey
Gary Sells, mentor

9 a.m.—*Proline Accumulation in Top Four Leaves of 0, 3, 5 Day Water-stressed Cucumber*

Kirk Shropshire and Brad Theel
Gary Sells, mentor

9:30 a.m.—*Two Anti-tumor Drugs Reduce Growth, Not Viability, of PC12 Cells*
Lia M. Heckenlively
Cynthia L. Cooper, mentor

9:45 a.m.—*The Evaluation of Neural Toxicity in Two Anti-Tumor Drugs*

Tracey Bormann
Cynthia L. Cooper, mentor

10 a.m.—*Acclimation Rate of Selected Tissues of Rana pipiens*

Joe Molnar and Darren Woodruff
George Schulte, mentor

10:15 a.m.—*Lithium Chloride Affects Behavioral and Thermoregulatory Changes Induced by Ergot Alkaloids*
Shane E. Zatkalik
Mike Tannenbaum and John Martin, mentors

10:30 a.m.—*Magnitude of Activity-Induced Circadian Clock Resetting in the Hamster is Correlated with Other Circadian Parameters*
Jason DeBruyne
Daniel Janik, mentor

11 a.m.—*Use of Magnetic Resonance Imaging Technology in Cranial Osteopathic Research*
Scott D. Thrasher
Philip Wilson, mentor

11:15 a.m.—*Electrodynamics of a Neuron*
Venkat K. Bhashyam
Mohammad Samiullah, mentor

11:30 a.m.—*Nonlocal Quantum Effects for Correlated Massive Spin-1 Particles in the Singlet State*
Richard J. Lloyd
David E. Chyba, mentor

11:45 a.m.—*A Study of Foucault Pendulum*
Vijay Kumar
Mohammad Samiullah, mentor

1:30 p.m.—*Comparative Pollen Morphology of Co-occurring Light-Flowered and Dark-Flowered Viola pedata (birdfoot violet)*

Ranessa L. Cooper
Jeffrey M. Osborn and Steven B. Carroll, mentors

1:45 p.m.—*A Comparative Light and Electron Microscopical Study of Anther and Pollen Morphology of the Podostemaceae*
Sean P. O'Neill
Jeffrey M. Osborn, mentor

2 p.m.—*An Ultrastructural Study of the Endophyte-host Relationship of Epichloë typhina and Elymus virginicus (Virginia Ryegrass)*
Jennifer L. LaBundy
Jeffrey M. Osborn, mentor

2:15 p.m.—*The Osteopathic Treatment of Pulmonary Tuberculosis in the Early Twentieth Century*
Ron Patel
Cheryl Gracey, Still National Osteopathic Museum, and

Philip Wilson, mentors

2:45 p.m.—*Mapping the Y12 Gene of Maize*
Elysia Joyce
Brent Buckner, mentor

3 p.m.—*Microsatellite Repeat Variation within the Y1 Gene from Various Genetic Backgrounds of Maize*
Anne E. Hall*, Tara L. Phelps, and Michele A. Drewes
Brent Buckner, mentor

3:15 p.m.—*Molecular Analysis of Microsatellite Repeat Variation within the Y1 Gene of Maize and Teosinte*
Tara L. Phelps
Brent Buckner, mentor

3:30 p.m.—*A Study of Cooperative Base Groups Used in Organic Chemistry*
Curt Krause
Dana Delaware, mentor

4 and 4:15 p.m.—*Establishing an Ethical Connection in College Chemistry Majors. IV. Comprehensive Advising as a Function of Student Dynamics*
Michael R. Brucher and James L. Silvermail
Roger R. Festa, mentor

4:30 p.m.—*Measurement of Phosphatase Activity in Rat Mesangial Cells*
Robyn Stengel
Dana Delaware and Aubrey Morrison (Washington University School of Medicine), mentors

4:45 and 5 p.m.—*Solvent Dependence of pK_{BH^+} of N-methylanilines and N-phenylhydroxylamines*
Robert D. White and Aaron J. Cassely
Kenneth R. Fountain, mentor

SESSION B

Alumni Room

8 a.m.—*Induced Resistance in a Grass Mediated by a Fungal Endophyte*

Rebecca A. Boning
Thomas L. Bultman, mentor

8:15 a.m.—*Effect of a Fungal Endophyte and Damage on*

*Denotes member(s) of the group making the presentation.

Preference by an Insect Herbivore
Cheryl Hightower, Leslie Jenkins, Rachel Pawlitz, and Jennifer Ruder
Thomas L. Bultman, mentor

8:30 a.m.—*Effects of Endophytic Fungus, Nitrogen, and Plant Damage on Performance of Fall Armyworm*
Nyree J. Conard
Thomas L. Bultman, mentor

8:45 a.m.—*Effect of a Fungal Endophyte and a Loline Alkaloid on Parasitoids of Two Eulophid Parasitoids*
Kristin Borowicz
Thomas L. Bultman, mentor

9 a.m.—*Ramet Fate in the Endangered Running Buffalo Clover: Effects of Stolon Severing and Phosphorus Availability*
Nancy M. Jones
Michael I. Kelrick, mentor

9:30 a.m.—*A Computational Chemistry Study of Benzylc Hydrogen Atom Abstraction Processes*
Brian Miller
Anne E. Moody, mentor

9:45 a.m.—*Examination of Early Transition Metal Porphyrin Complexes*
Ben Martin
Dawood Afzal, mentor

10 a.m.—*The Synthesis and Applications of Nickel Porphyrin*
Ron Patel
Dawood Afzal and David Wohlers, mentors

10:15 a.m.—*The Synthesis and Characterization of Palladium Porphyrins*
Patrick Kirchhoefer
Dawood Afzal and David Wohlers, mentors

10:30 a.m.—*Synthesis of Electron withdrawing Porphyrin*
Rani Chohan
Dawood Afzal, mentor

11 a.m.—*Effects of Retinoic Acid on Lipopolysaccharide Stimulated Mononuclear Spleen Cells*
David Kolwyck
Diane Janick-Buckner, mentor

11:15 a.m.—*Effects of Gamma-Interferon and Retinoic Acid on the Expression of MHC Glycoproteins*

Kathleen M. Eubanks
Diane Janick-Buckner, mentor

11:30 a.m.—*Cytostatic Effects Induced in Mouse T-Cells by Extracts of Impatiens sp.*
Thomas C. Leeper
Anne E. Moody and Diane Janick-Buckner, mentors

11:45 a.m.—*Phenotypic Analysis of an Embryonic Developmental Mutation Affecting Drosophila melanogaster*
Tracey Bornann
Janna McClean, mentor

1:30 p.m.—*Microhabitat Distinction Among Birds of Southeastern Arizona*
Lisa Brush
L. Scott Ellis and Peter C. Goldman, mentors

1:45 p.m.—*The Mating System of the Southern Flying Squirrel, Glaucomys volans*
Chris Brown
L. Scott Ellis, Faculty mentor

2 p.m.—*Genetic Analysis of Southern Flying Squirrels, Glaucomys volans*
Tim Biega
Cynthia L. Cooper and L. Scott Ellis, mentors

2:15 p.m.—*Status of the Illinois Mud Turtle and the Blanding's Turtle in Clark County*
Chad Montgomery
Donald Kangas, mentor

2:45 p.m.—*The Relevance of USDA Fresh Onions Grading Standards to Kirksville Consumers*
Emily Dombek and Janice Capes
Paul W. Armah, mentor

3 p.m.—*Comparison of Weight and Height by Tape Versus Altitude Stick and Scale Measurements in Equines*
Arlene Nohilly
Glenn R. Nehly, mentor

3:15 p.m.—*Effects of Diet and Zeralon on Lamb Growth*
Norby, E.L., Corbett, P.C., Fralick, A.M., Nohilly, A., and Burns, C.
Tom Marshall, mentor

3:30 p.m.—*Using Bin-Run Soybean Grain as Seed*
Lisa Brokaw and Elynn Herr Duane
Merlin Ford, mentor

4 p.m.—*Missouri Dicots in the NMSU Herbarium: Database*

Analysis
Keith Watson
Donna Ford and Steven Carroll, mentors

4:15 p.m.—*Patterns of Seed Production in a Weedy Hibiscus*
Joie Scott
Steven Carroll, mentor

4:30 p.m.—*Resistance to Seed Germination in Viola pedata, a local violet*
Kristy Schmitz
Steven Carroll, mentor

4:45 p.m.—*The Effect of Flower Age on Pollen Performance in Silene latifolia*
Jean Ly
Steven Carroll, mentor

5 p.m.—*Competition Among Pollen Grains in Silene latifolia, a Common Weed*
Tracey Lassere
Steven Carroll, mentor

5:15 p.m.—*Transport of L-Leucine and D-Glucose by Black Bass Pyloric Caeca*
Guy Hagen and David Fletcher
George Schulte, mentor

SESSION C

Rooms 2/3

8 a.m.—*Relationship Between the Price and Volume of a Stock*
Louis Williams
Paul Fellows, mentor

8:15 a.m.—*Relationship Between the Spot and Futures Price of the British Pound*
Beth Turner
Andrew Mun, mentor

8:30 a.m.—*Minimum Variance Hedge of the Eurodollar Investment*
Brent Stewart*, Anton Dimitrov, Hollie Guglielmino, Rita Lin and Fernando Mena
Andrew Mun, mentor

8:45 a.m.—*Achieving the Optimum Risk Hedge of Japanese Yen*
Shain Rae*, Andrew Haas, Ching-Shi Wang, James Vasser, and Ivan Vassilev
Andrew Mun, mentor

9 a.m.—*Hedging German Mark Exchange Risk*
Mike Brucher
Andrew Mun, mentor

9:30 a.m.—*Relationship of Anthropometric Dimensions*

and Leg Flexibility to 1-RM Leg Press Strength
Jennifer Billingsley and Amy Weighill
Jerry Mayhew and John Ware, mentors

9:45 a.m.—*Prediction of 1-RM Bench Press from Repetitions in Moderately Trained Men and Women*
Javier Cargol
Jack Schrader and Jerry Mayhew, mentors

10 p.m.—*Measurement Specificity in the Determination of 1-RM Bench Press Strength Changes Following Training*
Jean Glover
Lee Bates, Chuck Clemens, and Jerry Mayhew, mentors

10:15 a.m.—*Validation of Parallel Dip Performance to Predict 1-RM Bench Press in Male Athletes*
Todd Chandler
Jerry Mayhew and Jack Schrader, mentors

10:30 a.m.—*Relative Submaximal Loads as Predictors of 1-RM Bench Press Strength in College Football Players*
Kate Gregory and Laura Graver
John Ware and Jerry Mayhew, mentors

11 a.m.—*Comparison of Dietary Intakes of College Men and Women*
Leah Himmelberg and Katie Ballmann
Jerry Mayhew and Lee Bates, mentors

11:15 a.m.—*Gender Difference in Anaerobic Stair Run Power*
Kristin McGuire
Jerry Mayhew, Jack Bowen, and Larry Boleach, mentors

11:30 a.m.—*Relationship Among Fitness Tests in a Required Wellness Course*
Crystal Piatt and Merek Guy
Jerry Mayhew and Jack Bowen, mentors

11:45 a.m.—*Relationship Between Agility Tests and Power Performances in College Students*
Rolf Halvorsen*, Lisa Prather*, and Danielle Peterson
Larry Boleach and Jerry Mayhew, mentors

1:30 p.m.—*Effect of Approach*

Distance on Power Output from the Margaria-Kalamen Test

Scott Gilbert*, Sandra Aguilon, Sally Alexander, and Allen Maeder
Jerry Mayhew, mentor

1:45 p.m.—*Effect of Ephedrine on Cardiovascular Function during Submaximal Exercise*
Shannon Graff*, Adam Teipel, and Ken Robbins
James Heimdal and Jerry Mayhew, mentors

2 and 2:15 p.m.—*Mardi Gras: An Experience of Carnivalization*
COMM 340 Class: Critical Perspectives on Performance

June Sullivan and Robert Mielke, mentors

2:45 and 3 p.m.—*Keiretsu: The Japanese Corporate Integration System and Its Impact on U.S. Exports*
Lisa Kovac, Hajime Namba, and Tarique Khan
Pyung Han, mentor

3:15 p.m.—*The Privatization Approach: A Lesson*
Anton D. Dimitrov
Pyung Han, mentor

3:30 p.m.—*Canadian Dollar Futures Hedging*
Eric Cargill
Andrew Mun, mentor

4 p.m.—*Futures Hedge of the Swiss Franc Exchange Risk*
Aaron Lassanske
Andrew Mun, mentor

4:15 p.m.—*Homosexuality in D. H. Lawrence*
Andrew Kearney
Elizabeth Otten, mentor

4:30 p.m.—*A Coming Out: Celebrating Lesbianism in Rita Mae Brown's Rubyfruit Jungle*
Andrea Dee Moses
Elizabeth Otten, mentor

4:45 p.m.—*Hayasha Kyoko: Survivor of Nagasaki*
Nick Bischof
Elizabeth Otten, mentor

5 p.m.—*Loss of Native American Oral Tradition*
Mary Delworth
Elizabeth Otten, mentor

SESSION D

Conference Room

8 a.m.—*Black Representation on NMSU Athletic Teams: A Statistical Analysis*
Kristen Roberts

Robert Graber, mentor

8:15 a.m.—*Schizophrenia and Religious Experience*
Jason Carson
Keith Doubt, mentor

8:30 a.m.—*The Real Oppression in Mental Health*
Patrick Granada
Keith Doubt, mentor

8:45 a.m.—*The Relationship Between Age Level and Perceived Parental Attitudes and Alcohol Use*

Leah Holcroft and Melissa Feltrop
Sherri Addis Palmer, mentor

9 a.m.—*Congressional Seniority and the Geographic Distribution of Federal Funds*
David Newland
John Ishiyama, mentor

9:30 and 9:45 a.m.—*Political Pressures on FED Monetary Policy*

Rebecca S. Ems
David Gillette and Candy Young, mentors

10 a.m.—*Self-efficacy Perceptions of Northeast's Female Business Students*
Rebecca Strank
Pyung Han, mentor

10:15 a.m.—*Environmental Disclosures of North American and European Firms*
Nathan Rages
Debra Kerby, mentor

10:30 a.m.—*A Comparative Study of American and Taiwanese Stock Markets*
Chiu-hui Chen
Jason Lin, mentor

11 a.m.—*Drug and Counsel*
Dan Wieman
Wenyung Xu, mentor

11:15 a.m.—*Mother-Child Interactions: An Assessment of Attitudes Toward Different Teaching Styles*

Angela Cochran, Catherine Hougham, and Andy Revell
David Conner, mentor

11:30 a.m.—*Teachers as Researchers: The Joining of Roles Within the Classroom*
Joy Bender and Emily Hudson

David Conner and Sue Novinger, mentors

11:45 a.m.—*Teachers as Researchers: Exploring Definitions and Limitations of Preschooler's Friendships*
Angie Cochran, Brian Drake,

and **Gina King**

David Conner and Sue Novinger, mentors

Phi Alpha Theta History Symposium Adam Marchand, moderator

1:30 p.m.—*Sanctuary and Persecution: A Comparison of Jewish Life Under the Domination of Islam and Christianity*

Keven Michael Freese
John Ramsbottom, mentor

1:45 p.m.—*The Cuban Coin: A View of U.S. Relations in Cuba*

Rachelle A. Freese
Taj Hargey, mentor

2 p.m.—*The Hidden Engineering of the Renaissance*
Daniel Loberg
David Robinson, mentor

2:15 p.m.—*"Young Woman's Blues": Bessies Smith, Race, and Sexual Politics*
Adam J Marchand
Jerold Hirsch, mentor

2:45 p.m.—*In the Light of Day: The Warning Signs to the 1968 Tet Offensive*
Christopher Norton
Thomas Zoumaras, mentor

3 p.m.—*Oppression or Affirmative Action? Slavery in Islamic Societies*
James Thomas Nugent
Taj Hargey, mentor

3:15 p.m.—*Tears in the Ocean: The Exploitation of the Aleutians in the Second Half of the 18th Century*
Brenda Seale
John Ramsbottom, mentor

3:30 p.m.—*The Fall of Constantinople: A Look at Contemporary Accounts*
Brant J. Donis
Robert Schnucker, mentor

4 p.m.—*Jungian Hermeneutics: The Search for the Self Outside of the Biblical Canon*
Christian Boyd
Philip LeMasters and David Murphy, mentors

4:15 p.m.—*Impact of Unfamiliar Speaker Dialect on Listener Impression Formation: Stereotyped Images within Standard American Dialects*
Michelle Kay Dodson
Sherri Addis Palmer, mentor

4:30 p.m.—*An Architectural Influence on Canterbury Cathedral*

Ethan A. Sincos
William Murray, Garry Gordon, James Harmon, and Sara Orel, mentors

4:45 p.m.—*A Question of Authenticity: The Authentication of Eight Prints from the University Gallery's Collection*

Ally E. Powers
Garry Gordon, Sara Orel, James Harmon, and William Murray, mentors

5 p.m.—*Senior Art Majors Critique Their Education*
Chris Kramer
Garry Gordon, mentor

SESSION E

Room 6

8 a.m.—*The Harmonic Oscillator with Dynamically Varying Spring Constant*
David A. Schuff
Peter Rolnick, mentor

8:15 and 8:30 a.m.—*Resonance in the Motion of a Driven Magnetic Harmonic Oscillator*
Erik Johnson and Steven Baldwin
Kenneth D. Hahn, mentor

8:45 a.m.—*Skyrme Model Profile Function Using Numerical Minimization*
Venkat K. Bhashyam
Peter Rolnick, mentor

9 a.m.—*A Fourier Analysis Program for Active Learning*
James S. O'Neill
Ian Lindevald, mentor

9:30 a.m.—*Weyl Curvature*
Michael Walters
Kevin Easley, mentor

9:45 a.m.—*Input Impedance of Acoustical Waveguides*
Craig Schaefer
Ian Lindevald, mentor

10 a.m.—*Acoustical Transmission Holographic Interferometry of a Vibrating Trombone Bell*
John G. Goings
Ian Lindevald and Robert Nothdurft, mentors

10:15 a.m.—*Electric Rockets: The Modeling of an Electromagnetic Launch System*
Allen Brokken
Maria Di Stefano, mentor

10:30 a.m.—*The Anomalous Acceleration of Light in a Gravitational Well*
Michael Walters
Mohammad Samiullah, mentor

11 a.m.—*Theory or Literature: Essences in Scholarship*
Melinda Morrow
Adam Davis, mentor

11:15 a.m.—*The Role of Women in Several Sherlock Holmes Stories*
Gretchen Wagner
Arnold Preussner, mentor

11:30 a.m.—*Manipulating Magnets and Bones: The Foundation of Osteopathic Medicine*
Joshua P. Kesterson
Philip Wilson, mentor

1:30 p.m.—*Explaining Dark Matter: A Modification of Newton's Law of Gravitation to Describe the Rotation Curves of Disk and Spherical Mass Distributions*
Eric Barnes
Mohammad Samiullah, mentor

1:45 and 2 p.m.—*Studies of Heavy Metal Pollution in the Sorfjord by Analysis of Zinc, Cadmium, and Lead in Brown Seaweed (Ascophyllum nodosum) and Blue Mussels (Mytilus edulis)*
Andrea L. Sollner and Shane E. Zatkalik
Dean Van Galen, mentor

2:15 p.m.—*The Self-Assembly and Electrochemistry of 4-Nonadecyl-4'-methyl-1,1'-dimethylene-2,2'-dipyridinium Ion*
Katherine Harrelson
Dean Van Galen, mentor

2:45 p.m.—*Determination of Iron Level in Serum by Kinetic Method*
Amy Spain
Yinfa Ma, mentor

3 p.m.—*Determination of Methemoglobin in Red Blood Cells of Shrews*
Cathy Paulsen
Yinfa Ma, mentor

3:15 p.m.—*Determination of 1,3-Dinitrobenzene in Rat Tissues by HPLC*
David Skibbe
Yinfa Ma, mentor

3:30 p.m.—*A Novel Assay for Penicillin G Production by Penicillium notatum Grown*

on Solid Media
Bryan J. Williams
Yinfa Ma, mentor

4 p.m.—*Communication Through Bathroom Graffiti*
R. J. Morris and Renee Steber
Adam Brook Davis, mentor

4:15 p.m.—*Effects of History on Taboo Word Recall Between Men and Women*
Christine D. Roche, Amy E. Thompson, and G. Christopher Wallen
Fred Shaffer, mentor

4:30 p.m.—*The Effect of Hyphenated Names on Perceptions of an Individual's Success*
Michelle Calkins, Allyson Powers, and Krista Schenck
Fred Shaffer, mentor

4:45 p.m.—*Effects of Classical (non-vocal) vs. Popular (vocal) Music on Reading Comprehension*
Sara R. Marchbank and Elizabeth A. Smith
Fred Shaffer, mentor

5 p.m.—*First Names and Preconceived Physical Characteristics*
Mike Seibe, Amy Rever, and Charles Rever
Fred Shaffer, mentor

SESSION F

Activities Room
POSTER SESSIONS AND
DEMONSTRATIONS
(throughout the day)

Investigation into the Synthesis of an Industrially Produced Herbicide
Pete Basta, Ken Patel, and Brian Miller
Dana L. Delaware and Kenneth Fountain, mentors

Development of Potential Inhibitors of Bile Salt Hydrolase
David Brooks and Donald Le May
Dana L. Delaware, mentor

Molecular Modeling of Analogs of Fructose 1,6 Bisphosphate
Eric S. Calhoun
Dana L. Delaware, mentor

Identification of a Novel Signal Transduction Component in Arabidopsis
Jennifer L. Cooper and Julie M. Stone
John C. Walker (University of Missouri-Columbia), mentor

Green Eggs and Ham: Food Color and Taste Perception
Tracie Dorn, Karin Drown, Heather McHaffie, and Jeff Thomann
Steve Salt, mentor

Estimation of VO₂max from the Rockport Walking Test in College Students
Jason Glover, Todd Chandler, and Richard Browner
Jack Bowen and Paul Visich, mentors

Isometric Strength Measurements as Predictors of Physical Performance in College Men
Merek Guy, Crystal Piatt, Leah Himmelberg, and Kate Ballmann
Jerry Mayhew and Jack Bowen, mentors

DNA Temperature Sensitive Replication Mutations in Escherichia coli and Salmonella typhimurium
Andrew Herbig
Alexandra Blinkova, Edwin Gines-Candelaria, and James R. Walker (University of Texas-Austin), mentors

The Processes of Scientific Jury Selection
Ann Houha and Tamara Kapler
Michele Breault, mentor

Using Multimedia to Stimulate Language in Children
Tricia Kaufmann, Jessica Pleskac, Susan Mittelstadt, Jason Steingraber, Jay Ballanger, and Kris Arness
Paula Cochran, mentor

Human Genetics Research via Genealogy: Inheritance Patterns in the Young and Wampler Families, ca. 1650 – 1994
Sarah Kitchen
Steve Salt, mentor

An Evaluation of Nasal and Mouth Effortless Breathing Protocols
David Knight, Jonathan Simmons, Amy Rever, and Charles Rever
Fred Shaffer, mentor

Assessment of a Two-session Effortless Breathing Protocol
David Knight, Jonathan Simmons, Amy Rever, and Charles Rever
Fred Shaffer, mentor

Senior Art Majors Critique Their Education
Chris Kramer
Garry Gordon, mentor

The Effects of Religion on Self-Esteem and Life Satisfaction
Michelle Metzger
Terry Palmer, mentor

Positive Interdependence and Its Relationship to Individual Performance in Cooperative Learning Groups Among College Students
Jennifer Mueller and Kelly Murphy
Terry Palmer, mentor

Correlation of Ionization Potentials with Hammett Constants of Copper (I) and (II) Salts of N-methylbenzohydroxamate using ZINDO/1
Vicky A. Musgrave
Pamela R. New, mentor

Effect of Diuron and Gramicidin on the Hill Reaction Using Chloroplasts from Spinach
Atsuko Nose and Sri Ghanta
Gary Sells, mentor

Salmonella and Other Bacterial Contamination of Raw and Cooked Poultry
Llana Piland and Aryn Danner
Steve Salt, mentor

The Analysis of Ultra-Trace Level Elements Using Electrothermal Vaporization Direct Current Plasma Spectrometry
Steven C. Ringwald and Brian Thompson
David L. McCurdy, mentor

The Effect of Information Suggesting a Biological Cause of Homosexuality on Attitudes Toward Homosexuals
Michael Rothermich
Sherri Addis Palmer, mentor

Assessment of Insulative Effectiveness of Nests of White-footed Mice, Peromyscus
Matthew S. Tomich
Mike Tannenbaum, mentor

The Matrix Communicator
Darrell Williams
Thomas A. Linares, mentor

Unconscious Priming Effects in Comprehension of Text
Todd Zimmerman
Terry Palmer, mentor