



NORTHEAST TODAY

▶ VOL. 18 NO. 11 ◀

Northeast Missouri State University

November 2, 1992

Two Northeast Students Named 1993 Rotary Scholars

Northeast Missouri State University 1992 graduate, John Thompson, Jr., and senior history and political science double major, Richard Lender are both recipients of the 1993 Rotary Foundations Ambassadorial Scholarship.

The Rotary Scholarship program promotes international understanding and friendly relations among people of different countries. Rotary scholars complete one academic year of study or training in another country where Rotary clubs are located. During this time, scholars serve as ambassadors of goodwill to the people of the host country through both formal and informal appearances before a variety of organizations. After this year abroad, scholars share their experiences with their home country through similar appearances.

John Thompson, Jr., a native of Williamsville, Ill., received his bachelor's of history in May of 1992. He is currently studying in Uruguay as a 1992 Fulbright Scholar. Thompson will begin his study abroad program as a Rotary Scholar in the fall of 1993 and plans to pursue interests in Latin American history.

Richard Lender, a native of St. Charles, Mo., has not been notified of which school he will be attending in the fall of 1993 as a Rotary Scholar. He believes it will be either his first or second choices; the University of London, England or the University of Nairobi, Kenya.

Lender plans to study international law or international relations depending on the programs offered by the institution.

LYCEUM SERIES PRESENTS



November 19 • 7:30 p.m.
Baldwin Auditorium

Financial assistance has been provided by the Missouri Arts Council, a state agency.

Northeast's 125th: Ophelia Parrish

The Ophelia Parrish Building was built during the administration of President Kirk and was constructed at the same time Kirk Auditorium was being built. Originally, the building had eighteen classrooms on the first floor, including an administrative office suite, offices for teachers, and a small auditorium with stage.

The second story consisted of seventeen rooms, including offices for teachers and a library room. The building was originally used as a demonstration school where students did practice teaching. It was built to accommodate about 500 students, including the kinder-

garten, the elementary school, and the junior high school. In later years, the building was devoted entirely to junior high school work.

The building cost \$87,000, which was appropriated by the fifty-first General Assembly. The building was named Ophelia Parrish in honor of Ophelia A. Parrish who served the School as supervisor of the Practice School from 1899-1903 and as head librarian and professor of library economy from 1903-1915. The building was officially opened on September 12, 1923.

Northeast's Interdisciplinary Research Team

The Cumberland Group, an interdisciplinary undergraduate research group, is now in its third year. Karen Kay, assistant professor of Japanese, and Cole Woodcox, assistant professor of English, work with a team of five or six students on a year-long research project. This is the only place on campus where undergraduate students can engage in self-directed research over the entire academic year.

"Basically, we read stuff and talk about it," Kay said in her presentation. "The Cumberland Group: An Interdisciplinary Research Team," made at the International Society for Exploring Teaching Alternatives' 1992 conference in California.

"It's different than a class because you prepare, and then re-evaluate after you meet each time...You're constantly evaluating your thought process," said Michael Schlehuber.

The program, inspired by President Warren's mention of interdisciplinary research teams on his first visit to Northeast, has three goals: to attract undergraduate students to careers in liberal arts, to encourage them to pursue graduate degrees in liberal arts areas, and to enhance the undergraduate curriculum. The name was taken from the university, Cumberland Academy.

Woodcox said, "We try to simulate the kind of research done at the graduate level."

cont. pg 3

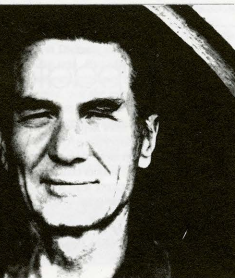
Ryle and Missouri Colleges
Division of Language and Literature
and
The Office of the Vice President
for Academic Affairs
present

An Evening with Galway Kinnell

*Internationally Renowned and
Pulitzer Prize-Winning Poet*

Mon., Nov. 9 • 7:30 p.m.
Ryle Hall Main Lounge

Book Signing will Follow



Theatre Department Presents *Into the Woods*

Cinderella, Little Red Riding Hood, and an Evil Witch take center stage as the Theatre Department of NMSU prepares for its production of *Into the Woods*, to be presented Nov.

12-14 at 8 p.m. in Baldwin Auditorium. Tickets are free and available at Edna Campbell's Bookstore and the Student Activities Office.

The musical was written by Steven Sondheim, who is best known for his show *A Funny Thing Happened on the Way to the Forum* and for his lyrics to *West Side Story*. According to Lee Orchard, assistant professor of dramatics and director of *Into the Woods*, the musical weaves childhood fairy tales including "Jack and the Beanstalk" and "The Baker and His Wife" into a complex story line which ultimately deals with adult themes. Orchard states that, along with providing a fast-paced, music-filled evening, the musical deals with difficult issues. It teaches that there is more to life than "happily ever after."

The show's cast of 24 students was selected from open auditions held in late Sept., and includes representatives from a variety of ac-

ademic disciplines and levels of musical experience. Rehearsals have run almost daily since auditions, concentrating on dialogue, blocking, choreography, and the vocal score. According to Jen Cobb, NMSU student and stage manager of the musical, the last two weeks of rehearsal will add the orchestral accompaniment, scenery, and demanding technical elements which will pull the show together to its final product.

Ron Rybkowski, assistant professor of dramatics, designed the set for *Into the Woods*, and also serves as technical director for the show. Over 22 students will spend a total of 80 hours constructing the elaborate set and working backstage during the show; manipulating a 20-foot revolving platform, stage wagons which will move set pieces on and off stage, and a system used to fly in set pieces.

Costuming for the production has provided an interesting challenge according to Joan Mather, costume designer. Together with volunteer help and students from her costuming class, she has compiled a wardrobe ranging

from lavish ball gowns for Cinderella's sisters to a custom-designed mask for the Big Bad Wolf.

A 19 member orchestra, under the direction of David Nichols, professor of music, has been assembled to accompany the production. According to Nichols, students were pulled from the full university orchestra to work on the unique score. Nichols comments that because the orchestra's rehearsal time is limited, working on the musical "provides the students with vital training in reading the music and making decisions quickly."

Working on the production has provided many challenges for students. According to Cobb, many students have taken on demanding production roles which provide experience that cannot be obtained in the classroom. In regards to the performance itself sophomore Amy Willard, cast as Little Red Riding Hood, comments "This is the first Sondheim show I've done. It's much more complicated and deeper than other [musicals] I've been in, which I think fits in with what one would expect on the college level."

1993 United Way Drive

Northeast Today is highlighting all agencies funded by the United Way as well as the progress of this year's drive.

Northeast students kicked off their fundraising activities on Oct. 13 with the annual PFM Food Fast. For every student who agreed to forfeit their dinner meal that evening, PFM contributed \$1.30 to the United Way. This year 1882 students gave up dining privileges in order to raise \$2446.60.

Paul Barton, chairman of the 1993 United Way Food Fast summarized the positive nature of the fast.

"The most lasting benefit of the food fast is the communal bridges that have been built between our residential community and the larger Kirksville community."

Featured this week are The Salvation Army and Violence Intervention Services, Inc.

The Salvation Army was founded in 1865. It is an international religious and charitable movement organized and operated on a quasi-military pattern and is a branch of the Christian Church. The motivation for the organization is love of God and a practical concern for the need of humanity. It provides family welfare, resident and non-resident clothing, medicine, food, temporary emergency shelter, counseling, institution visitation, correctional services assistance and missing persons bureau. Additional services include emergency disaster service, Christmas relief, camping, youth activities, adult fellowship, character building programs, volunteer service programs and spiritual guidance. It has been an agency of the United Way of Adair County since the first drive in 1956.

Violence Intervention Services, Inc. exists to provide and coordinate crisis intervention and prevention services, shelter, advocacy, and education in order to break the cycle of domestic violence and aid the victims of sexual assault. It provides a safehouse, crisis line, individual counseling, support groups, rape advocacy, law enforcement training, sexual assault victim advocate for the Kirksville Police Department, NMSU sexual assault staff training, legal and social service advocacy and community education. It has been an agency of the United Way of Adair County since 1991.

At the conclusion of the first two weeks of the drive, NMSU employees and students had contributed \$21,757.38, or 66% of the University's \$33,000 goal. If you have not yet contributed and would like to do so, please send your pledge card to Jenny DiMuzio at McClain Hall 102 as soon as possible.

CPC Update

3 TUESDAY

IBP, Inc. Interviews. Sales Representatives/Assistant Production Supervisors/Quality Control Inspectors/Procurement Trainees/Scheduler Trainees. All majors considered; must be interested in career with world's largest meat producing company. Dec. 92 grads.

4 WEDNESDAY

Kansas City, Kansas Police Department. Interviews.

Free Youth Day Rally

Sat., Nov. 7
1:30-10 p.m.

1:30-4 p.m.

NMSU Football game
Bulldogs vs. Missouri Southern State
Free tickets

4-6 p.m.

Optimist Club Barbecue

6-10 p.m.

Party Time: Dance, Swimming, Volleyball, Basketball, Various Games, Concessions, Prizes

Free for all area high school students

Coordinated by NMSU, KTVO Heartland Task Force, Kirksville Breakfast Optimist Club, KRXL Hit Men, Tau Lambda Sigma Sorority and Tau Kappa Epsilon Social Fraternity

Notables

Roy Domenico, assistant professor of history, has written an article which will be featured in the book *Papal Diplomacy in the Modern Age*. The book, which will be published in Jan. 1993 by Praeger Press, will contain a chapter based on Domenico's article, "America, the Holy See, and the War in Vietnam."

Christopher Gregory, assistant college professor in Ryle North College, presented a paper titled, "The Hopedale Community's Patterns of Settlement and Life" on Oct. 16 at the Communal Studies Association annual meeting at Nauvoo, Illinois. Gregory is currently teaching a special topics section of English Composition II which focuses on communal and utopian groups.

Lewis Hershey, assistant professor of business administration, has been retained by Prentice Hall publishers to direct the preparation of the teaching supplement and support materials to accompany the 6th edition of Kotler and Armstrong's *Principles of Marketing* textbook, scheduled for release in fall of 1993.

Patrick Lobert, assistant professor of French, presented a paper titled "Race and Repression: Gustave de Beaumont Discovers American Democracy" at the Nineteenth Century French

Studies Colloquium held at Binghamton University (Oct. 24) and at the West Georgia College World Literature Conference (Oct. 17).

Paul Parker, assistant professor of political science, made a significant contribution to judicial federalism with his article titled, "Reexamining the Role and Functions of State Judges: A Statutory Perspective." He was commended for his work by the Center for State Constitutional Studies at Rutgers University.

Randall Parker, assistant professor of education, recently served as a member of the National Review Panel for the Sallie Mae First-Year Teacher Awards Program sponsored by the American Association of School Administrators.

Joy Pugh, criminalist in the Northeast Area Criminalistics Laboratory at NMSU, was speaker at the Missouri Juvenile Officer's Association meeting on Oct. 9. Also she attended the Midwestern Association of Forensic Scientists fall meeting from Sept. 28-Oct. 2.

James Tichenor, professor of psychology, was a discussant at the 12th Missouri Conference on Child Abuse and Neglect. The conference was held on Sept. 23-25, in Columbia, Mo.

Student Affairs Offices Move To Missouri Hall

The Dean of Students, the Assistant Dean of Students, and the Residential Living offices have been moved to 120 Missouri Hall. Later the International Student and the Services for Individuals With Disabilities offices will also be moved to Missouri Hall.

"With the student affairs offices in with the students, we'll probably be more in touch with them," said Verona Nichols, acting dean of students. She said the move brings the student affairs programs, which actually includes about ten programs, together. "It will allow us to be collaborative and effective."

Nichols said the move was prompted by a space crunch in McClain Hall, and empty space in Missouri Hall. The location is probably temporary.

All the remodeling was done by Northeast staff, which Nichols said made it much less expensive.

Cumberland cont.

"When we first began the Cumberland Group the student members were shocked that we didn't know how our investigation would turn out, that we were in waters as unknown to us as to them," Kay said at the ISETA '92 conference. "It's important for students to realize that faculty members don't have all the answers."

Learning to analyze problems outside their discipline and examining problems from more than one approach within the intellectual community are major benefits for members of the interdisciplinary Cumberland Group.

Experts in other areas are occasionally invited to speak to the group to explain a reading or offer a new approach. In the past, the group has consulted Mary Beersman, professor of mathematics and David Gillette, associate professor of anthropology. "The visitor is generally envious of the Cumberland Group experience," Kay said.

Topics are chosen by reviewing the past year's findings and deciding whether to develop it further, redefine it, or choose a new one entirely. This year's topic is visual perception.

"In the past we've concentrated more on the process, but this year we hope to have something publishable," Kay said.

The Group is supported by the Vice President for Academic Affairs in cooperation with the Development Fund.

Students apply for the Cumberland Group in mid-March, submitting a recommendation, a writing sample, and position papers on three or four topics and interviewing with the faculty and some members of the group.

Schlehuber described the time commitment as "comparable to a 400 or 500 level class."

Students interested in becoming part of the Cumberland Group should contact Woodcox at 785-4119, or Kay at 785-4678.

Northeast Hosts the Missouri Colloquium on Writing Assessment

Northeast Missouri State University hosted the 6th annual Missouri Colloquium on Writing Assessment, Oct. 29 and 30.

Dr. Shirley Morahan, associate professor of English and director of writing programs, and Sue Pieper, director of writing assessment co-chaired this event.

Dr. Morahan explains that in addition to providing an opportunity for college and university faculty to discuss common issues of literacy, writing and assessment; the Colloquium also offered an opportunity for area high school and college students to learn about the assessment techniques being used in their schools.

This year's Colloquium honored the Department of Elementary and Secondary Education and the Missouri Association of Teachers of English for their innovations in assessment techniques used in Missouri's public schools. DESE language arts specialist, Charlotte O'Brien, was presented with a certificate.

O'Brien, along with Grace McRenolds, is responsible for expanding Missouri's assessment testing beyond the typical multiple-choice examination to include performance tests. One example of this is a writing assessment, comparable to NMSU's Sophomore Writing Experience, taken at the eighth and eleventh grade levels.

Dr. Morahan believes that these innovations in assessment lead to improvements in education because "... educators must change their teaching styles in order to adapt to these tests."

The Colloquium's position on writing assessment hopes for such innovation in education. When writing becomes an integral part of education then, according to Dr. Morahan, it is seen "as a process of stages including; brainstorming, drafting, editing and so forth." In this way, assessment not only helps students to evaluate their writing, but it also helps educators to improve their teaching skills.

Marcia Dickson, co-editor of the groundbreaking text, *Portfolios: Process and Product*, and assistant professor of English at Ohio State University, was the event's guest speaker. Dickson also served as the Colloquium's consultant to writing assessors. She directs the Early English Composition Assessment Program, which is a high school portfolio assessment project sponsored by the Ohio Board of Regents.

For your Information:

The University will be enforcing its policy that prohibits any food or drink being taken into Stokens Stadium.

This Week

2 MONDAY

- ▶ 8:15-10:30 a.m.—**National Chemistry Week booth**, Science Hall 220. Doughnuts and Juice will be sold for 25 cents. Also, giveaways.
- ▶ 9 a.m.-5 p.m.—1991-92 **Yearbook distribution** and individual photos, SUB Games Room; through Nov. 6. Free to all full-time students, faculty and staff. No appointment necessary.
- ▶ 10 a.m.—**National Chemistry Week Science Video Displays** will be shown throughout the week in the SUB main concourse.
- ▶ 7 p.m.—**Poetry/Fiction** reading featuring Joseph Benevento, associate professor of English, and Jim Thomas, professor of English, Ryle Hall Conference Room
- ▶ 7-9 p.m.—**Tie-Dyeing**, Science Hall 260. Cost is \$8 and T-shirts are provided; through Nov. 4.
- ▶ 7:30 p.m.—**"Faculty Members Sitting Around Talking About Politics,"** Ryle Hall main lounge
- ▶ 8 p.m.—**Guest Faculty Voice Recital** featuring Katherine Eberle, mezzo-soprano, and Robin Guy, piano, SUB Activities Room
—**American Chemical Society Student Affiliate** presents the movie "Medicine Man" to kick off National Chemistry Week, Science Hall 274.

3 TUESDAY

- ▶ 6 a.m.-7 p.m.—**Election Day**, General Election
- ▶ 1:30 p.m.—**ACT/COMP Objective Test (Soph/Junior)**, SUB Activities and Tangerine rooms.
- ▶ 7 p.m.—**PI Delta Phi** honorary French society presents the movie, "Une Affaire d'une femme," with English subtitles, Violette Hall 111
—**Lady Bulldog Volleyball** vs. Mount Mercy College, Pershing Arena

4 WEDNESDAY

- ▶ Noon-1 p.m.—**"Lunch On The Lawn"** topic, "Everyone's Got a Hungry Heart, Recognizing Eating Disorders," University Counseling Services, 202 E. Patterson
- ▶ 7 p.m.—**Education conference** weekly meeting, Ophelia Parrish 115C
—**Chemical Demonstration Show**, Science Hall 274
- ▶ 9 p.m.—**Society for Creative Anachronism** informational meeting, Violette Hall 171. See Notes.
- ▶ 10 p.m.—**Life Improvement Together for Everyone (LITE)** informational meeting, Catholic Newman Center, 709 S. Davis. LITE is an organization comprised of small groups of people helping each other grow closer to God and become better people.

5 THURSDAY

- ▶ 4 p.m.—**Legislative internships** informational meeting, SUB 6. See Notes.
- ▶ 6:15 p.m.—**Readers Round Table** open meeting, Ophelia Parrish 209
- ▶ 7 p.m.—**Historical Society** open meeting, Ophelia Parrish 214

—**"God-Radically Misunderstood,"** by Dave Embree from Southwest Missouri State University, SUB Activities Room; also Nov. 6, same time and location. Sponsored by the Campus Christian Fellowship, Baptist Student Union, and Campus Crusade for Christ.

- Lady Bulldog Volleyball** vs. Columbia College, Pershing Arena
- ▶ 7:30 p.m.—**Interviews** for Kanak and Kanakomo Christian Athletic camp counselors, Catholic Newman Center, 709 S. Davis. For more information contact Laurel at 785-4793 or Kerri at 665-1242.

6 FRIDAY

- ▶ 9-11:30 a.m.—**Lecture** by Rise Shaw of the Women's Infinity Network, SUB Alumni Room. See Notes.
- ▶ Noon—**Truman applications** (rough draft) due, McClain Hall 102

7 SATURDAY

- ▶ 1:30 p.m.—**Bulldog Football** vs. Missouri Southern State College, Stokes Stadium
- ▶ 2 p.m.—**Bulldog Soccer** vs. University of Missouri-Rolla, University Soccer Field

9 MONDAY

- ▶ 2 p.m.—**Family Sciences Test** (Senior - national test), SUB Activities Room
- ▶ 5:30 p.m.—**Education Connection** presents Jerry Stremel, professor of social science, lecturing on "Communication Barriers," Violette Hall 266.
- ▶ 6 p.m.—**Informational Meeting** concerning the study abroad program in Spain, McClain Hall 302
- ▶ 7:30 p.m.—**Poetry reading** featuring Pulitzer Prize-winning poet Galway Kinnell, Ryle Hall Conference Room
- ▶ 8 p.m.—**Philosophy and Religion Club** presents Dr. Thomas Bole of St. Thomas University, Houston, lecturing on "Taking Hegel Seriously," Ryle Hall Conference Room.

NOTES

Opportunity for service: Laubach Literacy classes, to prepare tutors for non-reading adults will be held Nov. 16, 19 and 20 from 6-10 p.m. at Kirksville Area Vocational Center. Attendance at all 3 sessions is required for Laubach certification. Those persons who become certified are matched one-on-one with adult non-readers as the need arises. Laubach certification is recognized in most states as a requirement for literacy tutors and is transferable from one geographic location to another. To learn more about the Laubach classes, contact the Center for Service-Learning at 785-4265 or call Nina Main, Adult Literacy Coordinator at 665-2865. To register for class, call 665-2865.

The Council for Advancement and Support of Education Mid-America District VI (CASE VI) scholarships for the district conference on Jan. 16-19, 1993 are now available for students interested in promoting higher education through ca-

reers in: institutional advancement, alumni relations, development, publications, public relations, government relations, and management. For applications or more information contact the Public Relations Office, McClain Hall 106 at 785-4019.

The Center for Service-Learning and Violence Intervention Services are co-sponsoring an informational lecture by Rise Shaw of Women's Infinity Network at 9-11:30 a.m., Nov. 6 in the SUB Alumni Room. She will speak on the topic of the "Dynamics of Interpersonal Violence, Battered Women Who Have Killed Their Partner/Spouse, and the Justice System Inequalities." The lecture is open to the public.

SAB events will now be listed on E-mail. Also, surveys concerning SAB movie choices for next semester are available in the Student Activities Board Office, SUB, or in the Index.

The Society for Creative Anachronism will be holding an informational meeting at 9 p.m. Nov. 4 in Violette Hall 171 for anyone interested in recreating the interesting parts of the Middle Ages and early Renaissance including fighting, costuming, cooking, dancing, heraldry, and calligraphy.

Applications are being accepted for Legislative Internships for the 1993 session of the Missouri Legislature. The internships offer academic credit and run from early Jan. through the close of the session in mid-May. An informational meeting will be held at 4 p.m. on Nov. 5, SUB 6. Students may apply at the Governmental Relations Office, McClain Hall 101, the office of Stuart Vorkink, professor of political science, McClain Hall 219, or the Center for Service Learning office in Barnett Hall 120. Applications must be completed by Nov. 6.

Graduate Fellowship Applications for eligible (3.85 GPA) seniors are available through the Phi Kappa Phi Honorary Society. Students and/or advisors should contact Ann McEnderfer, Chapter Secretary, Baldwin Hall 285-A or 785-7230. Applications must be returned by Feb. 1 for consideration.

Applications for the original program early retirement plan, which consists of a single lump sum payment to be made in FY 1992-93, must be filed before Nov. 30, 1992.

The Cooper Fellowships are offering a series of \$1000 and \$2000 grants to interested students who submit an essay expressing the student's notions and impressions about the modern African American experience and its impact upon our country's emerging class of intellectuals and career professionals. The deadline is Dec. 15. For more information contact the Financial Aid Office, McClain Hall 100.

Scholarships are available from the Tylenol Scholarship fund to students who are enrolled in an accredited 2 or 4 year college or university. Scholarships are awarded to students based on leadership in academics, school activities, and/or community activities. Students can pick up applications at participating retailers that promote the scholarship and provide the applications. The deadline is Nov. 15.