



NORTHEAST TODAY

▶ VOL. 16 NO. 4 ◀

Northeast Missouri State University

February 3, 1992

Northeast's 125th: Laughlin Hall

Laughlin Hall, built in 1905, was known as Science Hall until 1956, when the current Science Hall was completed. It was renamed after Harry H. Laughlin, a distinguished alumnus and internationally known scientist. He was a faculty member from 1908-1911. Laughlin Hall survived the fire which destroyed the old Baldwin Hall and Library Building and was the only building remaining from the original University campus until it was demolished to make way for the library addition in 1986.

Before the building was razed, a piece of ivy was taken off of the building and potted. It will be replanted on the library after the addition and renovation is completed. Campus rumor said that students brought the ivy to Northeast from Harvard University, Boston.

All students, faculty and staff
are encouraged
to attend a

University-Wide Meeting

Wednesday, Feb. 5

3:30 p.m.

Baldwin Auditorium

Remarks will be given by
President Warren concerning:

- ◊ CBHE review
- ◊ new long-range planning document
- ◊ FY'92-'93 budget outlook
- ◊ student fee structure

You are cordially invited to a
rededication of the Presidential Portraits and
opening ceremonies of the University's

125th Anniversary.

The Quiet Lounge, Student Union Building

Thursday, February 13, 1992 • 5-6:30 p.m.

5:30 p.m.—Comments by President Russell G. Warren

Review Team To Visit

The Coordinating Board for Higher Education, in agreement with Northeast Missouri State, has designated a nine-member team to conduct a comprehensive institutional review, Feb. 15-18.

The team will (1) study the programs as presented through discussions with faculty, students and staff and as presented in discipline documents and in the comprehensive document, *The Institutional Review of the Five-year Plan: 1987-88 Through 1991-92*.

(2) provide an evaluation on how well the university is accomplishing the new mission as defined by the goals of the Five-year Plan; (3) evaluate how effectively the human, financial and physical resources are being utilized to accomplish those purposes; and (4) offer recommendations for strengthening the continued implementation of the new mission. The final report of the team members will be forwarded to the CBHE.

Chairing the team will be Anthony Caprio, provost at Oglethorpe University. Other team members include Michael Andrew, director of teacher education at the University of New Hampshire; Paula Brownlee, president of the As-

sociation of American Colleges; William Carlson, professor and chair of economics at St. Olaf College; Jerry Gaff, director of projects on general education for the American Association of Colleges; Sue Huseman, vice president for academic affairs at the University of Maine-Farmington; Margaret Lucas, dean of the College of Creative Arts at West Virginia University; Ted Marchese, vice president of the American Association for Higher Education; and Kate Slevin, associate professor of sociology at the College of William and Mary.

The team will conduct formally scheduled meetings with administrators and students on Feb. 16. Monday and Tuesday (Feb. 17 and 18) will remain unscheduled to allow the team members to talk, at their discretion, with students, faculty and staff. An all-University reception will be held from 3:30 to 4:30 p.m. on Feb. 17 in the SUB Activities Room. A "walk-in session" with team leader Caprio will be held immediately following the reception, beginning at 4:30 p.m. The team will present their exit report at 1:30 p.m., Feb. 18, in the SUB Alumni Room.

Coed Housing Recommendations

Last September, President Warren appointed Dean of Students Vonnie Nichols, to chair a committee that would make recommendations for additional coed housing on campus. On Nov. 21, 1991, the committee unanimously approved a recommendation that Centennial Hall become coed by suite, Missouri Hall become coed by wing, and Blanton-Nason, currently coed by floor, become coed by suite. Dobson, Brewer, Ryle, and E.C. Grim halls will remain single sex halls next year. The recommendation has been accepted by President Warren, and the plan will be implemented this fall.

A relatively low cost is expected to renovate certain bathroom facilities in Missouri Hall for use by women students. Centennial Hall, which has suite bathrooms, will need little or no alterations.

Student surveys, faculty surveys, residential community forums and six formal proposals since 1981 indicated an interest in developing more coeducational opportunities on campus. Other issues that led the committee to their proposal were student interest for the past 18 years, the University's desire to keep in

step with its peer institutions, documented improvements in the community living environments and the success of other institutions offering coed housing.

The Coed Housing Committee include Nichols; Paul Barton, director of E.C. Grim Hall and University apartments; Dana Delaware, associate professor of chemistry and member of Faculty Senate; Jill Doerr of CHANL (College, Hall and Apartment Network of Leaders); Doug Eicholz, Missouri North peer adviser; Steve Eiken of Student Senate; Mark Faucette, assistant professor of mathematics and member of Faculty Senate; Jason Haxton, director of Residential Living; Kelly Horn, Dobson Hall RA; Jennifer Johnston, Ryle North peer adviser; Cathy Kromer, Centennial Hall RA; Lisa Miller, CHANL; Steve Nipper of Student Senate; Liz Root of Residential Living; Tracey Sutherland of the Residential Colleges; and Heidi Templeton, director of public relations.

An evaluation committee will be appointed to review the progress of coed housing and assess the direction to be taken to further coed housing that will be completed by the fall of 1994.

Mathematics and Computer Science Tutoring Schedule for Spring 1992

MT 156 College Algebra	VH 200	Sun.-Thur. 6-9 p.m.
MT 156-01,02,03 College Algebra (Bartling's class only)	VH 203N	Mon. & Wed. 7-9 p.m.
MT 157 Plane Trigonometry	VH 291	Mon. & Wed. 6-8 p.m.
MT 186 Elementary Functions	VH 204	Sun. & Wed. 7-9 p.m. Tues. & Thur. 6-9 p.m.
MT 200 Foundations of Math	VH 253	Mon. & Wed. 6-9 p.m.
MT 192 Essentials of Calculus	VH 202	Sun. 7-8 p.m. Mon. & Wed. 6-8 p.m.
MT 198, 263, 264 Calculus I, II, III	VH 201	Sun.-Thur. 6-9 p.m.
MT 198-01 Calculus I Lesseig's class only)	VH 265N	Sun., Mon., Wed., Thur. 6-7 p.m.
MT 263-02 Calculus II (Ajanapon's class only)	VH 265S	Sun.-Thur. 6:30-8 p.m.
MT 263-03 Calculus II (Smith's class only)	VH 253	Tues. & Thurs. 6-8 p.m.
MT 357 Linear Algebra	VH 203N	Sun., Tues., Thur. 6-8 p.m.
MT 365 Ordinary Differential Equations	VH 291	Tues. & Thurs. 5:30-7 p.m.
CS 175 Pascal Programming	VH 265N	Sun., Mon., Thur. 7-9 p.m.
Stat 190 Basic Statistics	VH 230	Sun.-Thur. 6:30-8:30 p.m.
STAT 378 Linear Regression/Time Series	VH 230	Tues. & Thur. 7:30-9 p.m.
MYSTAT Tutor Computer Lab	VH 248	Mon. & Wed. 1:30-2:30 p.m. Sun., Tue., Wed. 6:30-7:30 p.m.

Computer Language Lab Inquire at Computer Lab VH 248

There will be no tutoring on March 15-22, April 16 or 19 or after April 30.

CPC Update

Resumes and cover letters for the following are due Feb. 13 to the CPC.

- American Frozen Foods Inc.** Sales and management positions, various locations in the United States, contact person: Mike Schulman, director of recruitment
- F. N. Wolf & Company Inc.** Account executive/stockbroker, various locations in the United States, contact person: George Hubbard, regional vice president
- Sears** Retail management and credit management training programs, various locations in the United States, all majors, year-long training program, \$24,000, contact person: Mary Misar, manager of college recruiting
- Von Maur Executive** training program, various locations in Iowa, all majors, must have an interest in retail career, contact person: Cindy McDonald, employment manager

Mock interviewing will begin Feb. 3. To set up an appointment, stop by the CPC or call them at 785-4353.

Attention students: Job Quest, the spring version of Career Expo, is scheduled for March 4. Stop by the CPC for a list of participating employees.

For more information, call the Career Placement Center at 785-4353 or stop by McKinney Center. Sign-up folders for each recruitment visit are posted two weeks before interview date. Remember to register with the CPC prior to signing up for interviews.

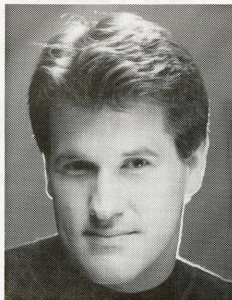
Feb. 3 Hormel-preview session, 7 p.m., CPC

Feb. 4 Hormel-interviews for meat and grocery products sales representatives, computer analyst, staff accountant, quality and process control engineer, production management positions. May and August graduates.

Feb. 11 Aldi Inc.-preview session, 6-9 p.m., SUB Alumni Room, mandatory attendance for those wishing to interview

Feb. 12 Aldi Inc.-interviews for district supervisor. May graduates, GPA 2.75 or above.

Mental Power



Craig Karges, a nationally known mentalist/psychic magician, will be performing at 8 p.m. on Feb. 10 in Baldwin Auditorium. Karges was named the 1991 campus entertainer of the year by the National Association for Campus Activities. Past winners of this award include Huey Lewis and The Police.

Karges' show is a display of illusion and psychic happenings using total audience participation. He does not prearrange anything with his audience and offers \$10,000 payable to charity if you can prove he uses stooges or confederates in his act.

Tickets for the show are \$1 with an SAB sticker and \$2 without and are available in the SAB Office.

President's Leadership Experience Application Procedures

The President's Leadership Experience provides you with the opportunity to spend two working days with President Warren. Whatever President Warren does during those two days, you will be right there, in on it all.

Two candidates will be chosen for Leadership Experiences this semester. Application is open to any student in good academic standing with a record of, and commitment to, excellence in leadership. To apply, you should submit an essay, 500 words or less, describing your record of leadership on and/or off campus, and your commitment to leadership suggested by professional aspirations. The essay should address why

you seek the President's Leadership Experience and how it would prove beneficial to you. Please include address and telephone numbers. Resumes (optional) may be included with the essay.

Applications should be submitted at the front desk of the Career Placement Center no later than 5 p.m. on Feb. 5. A selection committee will evaluate applications and determine finalists to be interviewed the week of Feb. 10. The committee's decision shall be final. Selected candidates will be notified by Feb. 14.

Dates for the Leadership Experiences will be chosen to accommodate schedules of both President Warren and the selected students.

Debate Team Takes Fifth at Central Missouri State

NMSU debate team took fifth place in overall debate sweepstakes at Central Missouri State University, Jan. 24-25.

"Considering most of the squad had not been out since November, I think this is a good finish," John Hart, director of forensics, said.

Individual debate standouts include Holly Bowser, freshman undeclared major, and Eric Hansen, senior political science major, who were octo-finalists in the tournament. In

Individual Events, Doug Hare, senior pre-law/political science major, took sixth in After-dinner Speaking and Tracy Christeson, freshman undeclared major, was a semi-finalist in Dramatic Interpretation.

This semester's debate topic is "Resolved: that advertising degrades the quality of life in the United States."

NMSU will host its own intercollegiate speech tournament on Feb. 29.

International Week

Feb. 3-7

sponsored by the International Club

- Feb. 3 "Salaam Bombay" film from India 6 p.m. Violette Hall 290
- Feb. 4 **Shri Lankan Independence Day** A cricket video will be shown outside Main Street Market
"International Appreciation 101" Reception honoring international faculty and staff 6 p.m. SUB Alumni Room
- Feb. 5 "Physical Basis of Math of Particles" presented by Rohana Wijewardena from the University of Cincinnati 4:30 p.m. Science Hall 111
Open Forum for study/work abroad with a panel of students and faculty from here and overseas 6 p.m. SUB Alumni Room
- Feb. 6 **International Fashion Show** 2 p.m. Main Street Market
International Night A night of culture and entertainment 7-9 p.m. SUB Georgian Room
- Feb. 7 "Give Peace a Dance" 8-1 a.m. Kirk Gym free admission and door prizes will be awarded

NMSU Celebrates

Black History Month

sponsored by the Association of Black Collegians

- ▶ "Eyes on the Prize II" Black Awareness Film Series Feb. 3, 10, 17, 24 8:30 p.m. McClain Hall 302
- ▶ "Beyond the Dream IV: Discovering the Past, Understanding the Future" a videoconference in celebration of Black history Feb. 5 12:2 p.m. SUB Tangerine Room
- ▶ **Cultural Diversity Week** Feb. 10-Feb. 16
- ▶ **Lock-In** Feb. 29 Time and place TBA

Notables

Congratulations to the 1991 *Windfall* prize winners. **Scott Ludtke**, junior English major, and **Cindy Kriete**, junior English major, for being chosen for publication in the 1991 issue.

Lee Bates, associate professor of industrial science, served as toastmaster for the Jan. 29 meeting of the local Toastmasters Club. A speech was given at the meeting by **Seymour Patterson**, associate professor of economics.

Marlow Ediger, professor of education, has had the following manuscripts published: "Active Involvement in the Higher Education Curriculum," in *Education*; "The Affective Dimension in Middle School Reading," in the *TAMS Journal*; and "Mathematics, Students and Computers," in *National Schools*.

Andrew Hendren, junior accounting major, received a Salvonic Seminar grant from the International Research & Exchanges Board to study the Bulgarian language next summer at the University of Sofia, Bulgaria. This is the first time that the grant, intended for faculty and graduates students, has been awarded to an undergraduate.

Jerry Mayhew, professor of exercise science, and former faculty members Michael Bemben and Donna Rohrs recently had their article titled "Scared Shot Put as a Measure of Upper Body Power in Adolescent Wrestlers" published in *Pediatric Exercise Science*.

Scott A. Olsen, associate professor of education, returned Jan. 19 from a one-week lecture tour of Taiwan. In addition to consulting with researchers working on a national item banking system for teachers in grades one through six, he presented a teacher workshop on measurement in the context of item banking for teachers across the Hualien area of Taiwan. Olsen gave two seminars for faculty and students at Hualien National Teachers College, "Item Banking and Item Banking Systems" and "Assessment

for Students with Educational Problems." He ended his tour with a speech at the National Chengchi University in Taipei titled "Issues in the Assessment of Higher Education in the United States with Examples in the Area of Science Reasoning."

Gregg Siewert, assistant professor of French, has had a paper titled "Semiology and Semantics of Camembert Cheese-box Labels" accepted for presentation at the international convention of the American Association of Teachers of French to be held July 18-23 in Strasbourg, France. The presentation will include slide illustrations.

President Russell G. Warren and Dean of Advancement **R. Eric Staley** recently fulfilled their roles as chair and co-chair, respectively, of the management track for the CASE District VI annual meeting in St. Louis. The two coordinated the program track concerning management issues in higher education, and each led a panel discussion on different topics. President Warren moderated a panel on "The Role of the President in Promoting Diversity," which featured, besides himself, President Kala Stroup of Southeast Missouri State University, and Chancellor Blance Touhill of the University of Missouri-St. Louis. Dean Staley moderated and was a participant in a panel on "Managing the President," which also featured Guy Horton, Executive Assistant to the President of the University of Missouri System, and Don Cannalte, formerly assistant to the president of the University of Colorado system. **Dale Schenewerk**, executive assistant to President Warren, also participated in the program by moderating a panel on "Total Quality Management." CASE is an acronym for the Council for the Advancement and Support of Education, a national organization which represents development, public relations, alumni and publications professionals. The District VI annual meeting was held Jan. 17-21.

New Faculty

This is the fifth in a series of profiles featuring new faculty.



Charles Murray, assistant professor of economics, comes to Northeast from Iowa State University, where he was an instructor and a research assistant. He is in the process of defending his dissertation from Iowa State University this spring. He received his Bachelor of Science and Bachelor of Arts from Shippensburg University of Pennsylvania in 1983 and an associate's degree from Harrisburg Area Community College in 1983. Murray has been the recipient of the Teaching Excellence Award and has been the president and vice president of the Economics Graduate Student Association.



Closept N. Ramesh, assistant professor of communication, comes to NMSU from Michigan State University, where he was a graduate teaching assistant. He received his bachelor's from Bangalore University in 1977, his master's from the University of Southern Mississippi in 1987 and he expects to receive his doctorate this June from Michigan State University. Ramesh is a member of the Speech Communication Association and the International Communication Association and has been published in *International Journal of Group Tensions and Communication Perspectives in Negotiation*.



Ronald K. Manning, assistant professor of French, comes to Northeast from Louisiana State University, where he was a graduate teaching assistant. He received his Bachelor of Arts in French and political science from Idaho State University in 1983 and he is in the process of completing his dissertation from Louisiana State University. Manning is a member of the American Council on the Teaching of Foreign Languages and is Director of the Language Learning Center at NMSU.

Richard D. Sluder, assistant professor of justice systems, comes to NMSU from Sam Houston State University, where he was a lecturer in the College of Criminal Justice. He received his bachelor's in 1978 and his master's in 1987, both from Northeast Missouri State University. He completed his doctorate from Sam Houston State University in 1991. Sluder is a member of the Academy of Criminal Justice Sciences and the American Society of Criminology. He has been published in *Federal Probation*, *Correctional Law Reporter* and *Texas Journal of Corrections*.

National Competition To Be Held



The Fourth Annual National Arts Competition Feb. 6 through March 4 in the University Art Gallery, first floor Ophelia Parrish. An opening reception on will be held on Feb. 6 at 7 p.m. in the Gallery. Regular gallery hours are 9:30 a.m. to 4:20 p.m., Monday through Friday.

The juror for this year's competition is Thomas Lawson, artist and critic. Lawson serves as dean of the School of Art at the California Institute of the Arts.

A banquet and presentation by Lawson will be presented in conjunction with the National Art Competition. The banquet will be held on Feb. 1, at 6:30 p.m. in the SUB Alumni Room. The cost is \$8, and reservations must be made through the Division Office, 785-4417, by Jan. 28.

Lawson's presentation requires no advance registration and is free and open to the public. His presentation will take place following the banquet, at 8 p.m. in SUB Activities Room.

Notes

The Vice President for Academic Affairs Office will no longer be handling graduation announcements. To purchase graduation announcements, contact the Campus Bookstore or Patty's University Bookstore.

The Sophomore Writing Experience will be offered on the following dates: Feb. 5, 7, 12, 14, 21, 23, 26, 28; March 2 and 8. All graduating seniors or students who wish to take Comp. II during the summer must take the SWE by Feb. 7. All students who wish to take Comp. II next fall must take the SWE by Feb. 28. For more information, contact the Writing Center in McClain Hall 303 at 785-4484.

Graduating seniors intending to enroll in a graduate or professional school may be eligible to apply for a \$7,000 fellowship from the Honor Society of Phi Kappa Phi. Students graduating between August 1991 and August 1992 with a cumulative GPA of 3.5 or above are encouraged to contact NMSU Phi Kappa Phi chapter secretary Paul Parker in McClain Hall 231 for more details. All materials, including three letters of recommendation, must be submitted by Feb. 10.

Deadline for applying for admission to the MAE Program for 1992-93 is Feb. 15. If you want to be a teacher, your complete application must be received by the Graduate Office by Feb. 15. For further information, see Amy Gates in Violetta Hall 267J or call Heavenly McKown at 785-4385.

The St. Louis Alumni Chapter-NMSU, will be sponsoring a tour of the St. Louis Science Center and a reception immediately following from 6-8 p.m. on March 13. Graduating seniors who will be in St. Louis over spring break are invited to attend this event to explore career networking opportunities and learn about the benefits alumni chapters can offer new graduates. The cost is \$8 per person. Please send money by March 1 to c/o St. Louis Alumni Chapter, 41 Westmeade Court, Chesterfield, MO 63005.

Alpha Phi Omega, national co-ed service fraternity, in conjunction with the Kirksville Housing Authority, will be sponsoring a school supplies drive for the Devlin Center for abused and neglected children. They are asking for donations of paper, construction paper, pencils, scissors and other supplies. Monetary donations will be accepted and will go toward school supplies. Collection tables and boxes will be in the SUB, McClain Hall, Violetta Hall, and the residential halls Feb. 5-7. For more information, call Pat at 785-5476.

The SUB Quiet Lounge will be closed from 3-7 p.m. on Feb. 13 due to the Rededication of

the Presidential Portraits Ceremony. Students are welcome and encouraged to attend the reception.

A **scholarship** for women majoring in education is being offered by the Kirksville Monday Club. Applicants must be juniors planning to enter the teaching profession, have a 3.0 GPA and show financial need. A written recommendation from a department head is required. Applications are available in the Financial Aid Office, McClain Hall 100. Application deadline is Feb. 28.

Windfall submissions for the 1992 issue are due Feb. 16 in the *Windfall* box in the SUB.

An **information forum** for students moving off-campus, sponsored by Student Senate and Residential Living, will be held at 6 p.m. on Feb. 4 in the Centennial Hall main lounge, at 7 p.m. on Feb. 6 in the Ryle Hall main lounge and at 8:30 p.m. on Feb. 12 in the Missouri Hall cafeteria. An attorney and a fire inspector will be present to address legal and safety aspects of off-campus living.

Journalism majors and students planning a career in journalism may apply for a \$250 scholarship offered by Missouri Press Women, Inc. Application deadline is March 15. Scholarships are also available to students of journalism and related fields who are residents of St. Louis metropolitan area from the Journalism Foundation of Metropolitan St. Louis. The deadline for these scholarships is March 20. All applications are available in the Financial Aid Office, McClain Hall 100.

Auditions for the spring production of *Lend Me A Tenor* are Feb. 10 and 11. Check the theatre department for details.

In need of a new...love? Try the Valentine's Computer Match-up, sponsored by SAB. Just fill

out a questionnaire outside the Main Street Market Feb. 6-7 and 10-11 from 11 a.m.-1 p.m. and 4-6 p.m. Then pick up your matches on Feb. 13-14 in the SAB Office. The questionnaires are free and the matches are .25 cents.

Cardinal Key is sponsoring their spring rush. Any interested women with a GPA of 3.0 or higher and 60 hours by the end of the spring semester can pick up an application in SUB from 9:30 a.m.-4:30 p.m. on Feb. 5-6. If you have questions, contact Keri Bjork at 785-5994 or Christine Davids at 785-4998.

Michael S. Clapp, FBI agent, will present "White Collar Crime" at 7 p.m. Feb. 11 in Barnett Hall 250. Clapp is sponsored by Delta Sigma Pi, professional business fraternity.

Missouri South Council is sponsoring a trip to see *Les Misérables* on April 4. Tickets are \$32 and go on sale at 2 p.m. Feb. 6 in Missouri Hall room 155.

Winter Kickball, sponsored by SAB will be from 8 a.m.-4 p.m. Feb. 15-16 at the practice football field. Sign-up now through Feb. 13 in the SAB Office. The cost is \$4 for teams with 5 or more SAB stickers and \$5 for teams with less than 5 SAB stickers. First prize is a pizza party.

SAB will be bringing Craig Korges, a mentalist, to NMSU on Feb. 10 at 8 p.m. in Baldwin Auditorium. Tickets are on sale now in the SAB Office - \$1 with a sticker and \$2 without. He knows you'll be there.

The Writing Center is now open for walk-in consultations. No appointment is necessary, but it is recommended. The Center's hours are Mondays 11:30 a.m.-4:30 p.m., Tuesdays through Thursdays 10:30 a.m.-4:30 p.m. and Fridays 10:30 a.m.-2:30 p.m. The Writing Center is located in McClain Hall 303.



This Week

3 MONDAY

- ▶ **Mock interviewing begins**, set up an appointment with the CPC at 785-4353
- ▶ **12:5 p.m.—Groundhog's Day Golf Tourney**, sponsored by SAB, on the mall, free and open to all, two-member teams can choose to compete for dinners at Mainstreet Market
- ▶ **1:30 p.m.—COMP/CAAP sophomore test**, SUB; through Jan. 6
- ▶ **6 p.m.—"Salaam Bombay,"** a film from India, sponsored by the International Club, Violette Hall 290, free admission
- ▶ **7 p.m.—Hormel preview session**, CPC
- ▶ **7:30 p.m.—Men's basketball** vs. Quincy College (Ill.), Pershing Arena
- ▶ **8:30 p.m.—Eyes on the Prize II** film series, part of Black History month, sponsored by the Association of Black Collegians, McClain Hall 302

4 TUESDAY

- ▶ **Hormel interviews**, sign up for times at the CPC
- ▶ **3:30-4:30 p.m.—"Liberal Arts & Science Power:** Your Northeast Experience and Career Skills," CPC Workshop, Violette Hall 252
- ▶ **6 p.m.—Informational forum** for students moving off-campus, Centennial main lounge, see Notes
- "International Apprec-101,"** reception honoring international faculty and staff of NMSU, sponsored by the International Club, SUB Alumni Room
- ▶ **8:30-9:30 p.m.—Moods Informational Meeting**, sponsored by the Association of Black Collegians, SUB 6

5 WEDNESDAY

- ▶ **12-2 p.m.—"Beyond the Dream IV: Discovering the Past, Understanding the Future,"** videoconference in celebration of Black history, SUB Tangerine Room
- ▶ **3:30 p.m.—University-wide meeting**, Baldwin Auditorium. All students, faculty and staff are encouraged to attend.
- ▶ **4:30 p.m.—"Physical Basis of Math of Particles,"** presented by Professor Rohana Wijewardena from the University of Cincinnati, sponsored by the International Club, Science Hall 111
- ▶ **6 p.m.—International Association of Business Communicators** open meeting, Ophelia Parrish 217
- Toastmasters** weekly meeting, Barnett Hall 223, open to all students, faculty and staff

—**Open Forum** on study/work abroad with a panel of students and faculty from here and overseas, sponsored by the International Club, SUB Alumni Room

- ▶ **8 p.m.—Political Science Club** open meeting, Ophelia Parrish 211

6 THURSDAY

- ▶ **9:30 a.m.-4:20 p.m.—National Art Competition**, University Art Gallery, first floor Ophelia Parrish, Monday through Friday, through March 4
- ▶ **2 p.m.—International fashion show**, sponsored by the International Club, Main Street Market
- ▶ **3:30-4:30 p.m.—"What Should I Do for a Living? Choosing Your First Job,"** CPC Workshop, Violette Hall 252
- ▶ **7 and 9:30 p.m.—"Silence of the Lambs,"** sponsored by the Psychology Club, Baldwin Auditorium, tickets are \$1.50
- ▶ **7 p.m.—Speakout: Abortion**, sponsored by College Republicans, Ophelia Parrish 214. Everyone is welcome.

—**Informational forum** for students moving off campus, Ryle main lounge, see Notes

- Opening reception** for the Fourth Annual National Arts Competition, University Art Gallery, first floor, Ophelia Parrish
- ▶ **7-9 p.m.—International Night**, sponsored by the International Club, SUB Georgian Room
- ▶ **8 p.m.—Sigma Tau Delta**, honorary English society, informational meeting, Ophelia Parrish 116, for details contact Julie at 665-9302
- "Bathroom Humor,"** by Zildt & Milmore, presented by Project II, in the Lab Theatre, Baldwin Hall 177, admission is free; also Feb. 7 and 8

7 FRIDAY

- ▶ **3:30 p.m.—"What is a Good Person? Political Crisis and the Philosophical Tradition,"** presented by Steven Wagner, Ph.D., University of Illinois, SUB Alumni Room
- ▶ **7 and 9:30 p.m.—"Boyz n the Hood,"** SAB movie, Baldwin Auditorium. Admission is \$2 or free with an SAB sticker.
- ▶ **8 p.m.-1 a.m.—"Give Peace a Dance,"** dance sponsored by the International Club, Kirk Gym, free admission, door prizes will be awarded
- ▶ **8 p.m.—Reception and discussion** for Steven Wagner of the department of philosophy at the University of Illinois, Ryle Hall conference room

8 SATURDAY

- ▶ **8 a.m.—ACT national test date**, Violette Hall
- ▶ **3 p.m.—Day of Dialogue**, a community-wide meeting, sponsored by the Student Social Change Coalition, SUB Activities Room
- ▶ **3, 5 and 7 p.m.—Star Wars Trilogy**, SAB movie, Baldwin Auditorium. Admission is \$2 or free with an SAB sticker.
- ▶ **6 p.m.—Women's basketball** vs. Lincoln University, Pershing Arena
- ▶ **7:30 p.m.—Chuck Barris** Nitte, sponsored by SAB, Kirk Gym, contestants needed for Newlywed Game and Dating Game, sign up in the SAB Office, free admission
- ▶ **8 p.m.—Men's basketball** vs. Lincoln University, Pershing Arena
- ▶ **11:30 p.m.—Alpha Kappa Alpha Sorority Inc.** neophyte party and step show, Pershing small gym, \$2 for non-Greeks and \$1 for Greeks. Everyone is welcome.



Bottom Line

Each faculty member regularly receives what seems like reams of memos, most of which only require a single reading. An up-to-date, strategically placed bulletin board in each department would eliminate the need for much of this massive reproduction, saving the university a great deal of money and employee time.